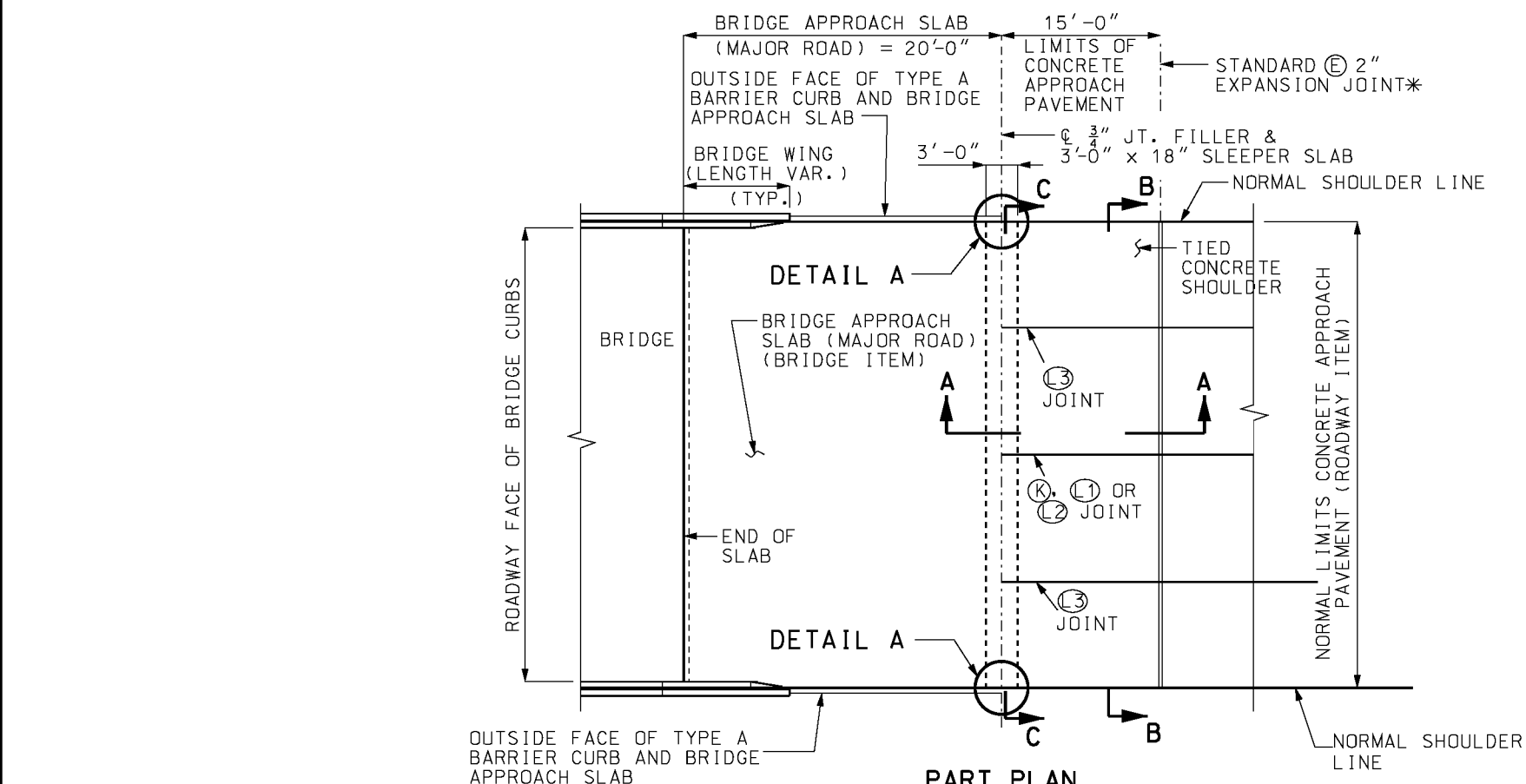


PART PLAN (SKEWED)

\* NOT REQUIRED WHEN ADJACENT PAVEMENT IS ASPHALT.



PART PLAN (SQUARE)

SEE SHEET 2 OF 3 FOR DETAIL A.

FOR SECTIONS A-A, B-B AND C-C, SEE SHEET 3 OF 3.

GENERAL NOTES:

TYPE A CURB IS TO BE CONSTRUCTED WITH CONCRETE APPROACH PAVEMENT ONLY WHEN DRAIN BASINS ARE REQUIRED. TYPE A CURBS WILL BE CONSIDERED AS INCIDENTAL, AND WILL BE INCLUDED IN THE PAYMENT FOR CONCRETE APPROACH PAVEMENT.


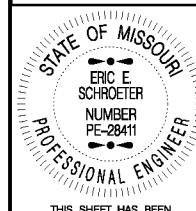
FOR SHOULDER PAVING AND DRAIN BASINS AT BRIDGE ENDS, SEE STANDARD DRAWING NUMBER 609.40.

FOR TYPE A BARRIER CURBS, STANDARD 2" EXPANSION JOINTS, LONGITUDINAL JOINTS AND TONGUE AND GROOVE JOINTS, SEE STANDARD DRAWINGS NO. 502.00 AND 609.00.

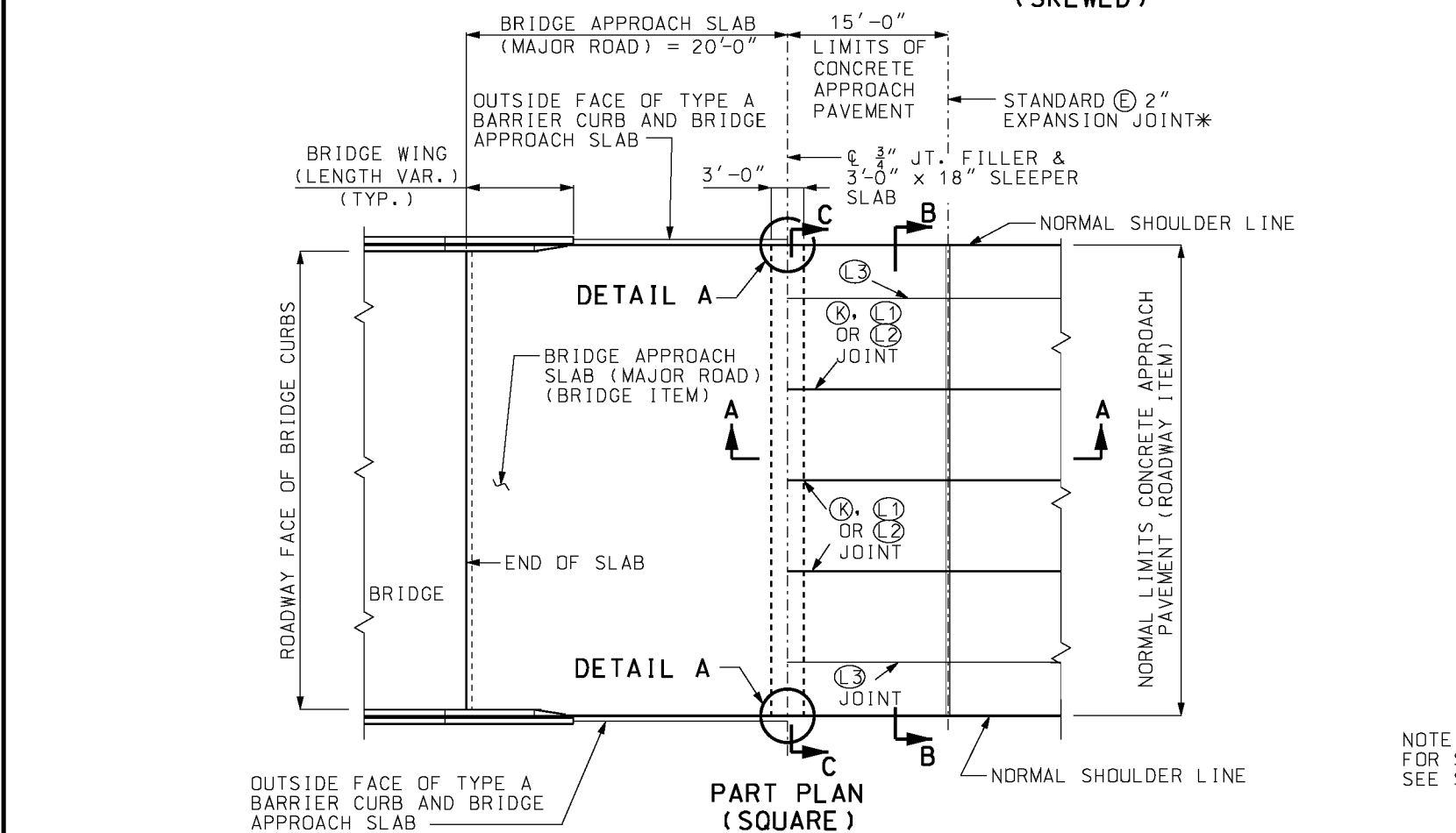
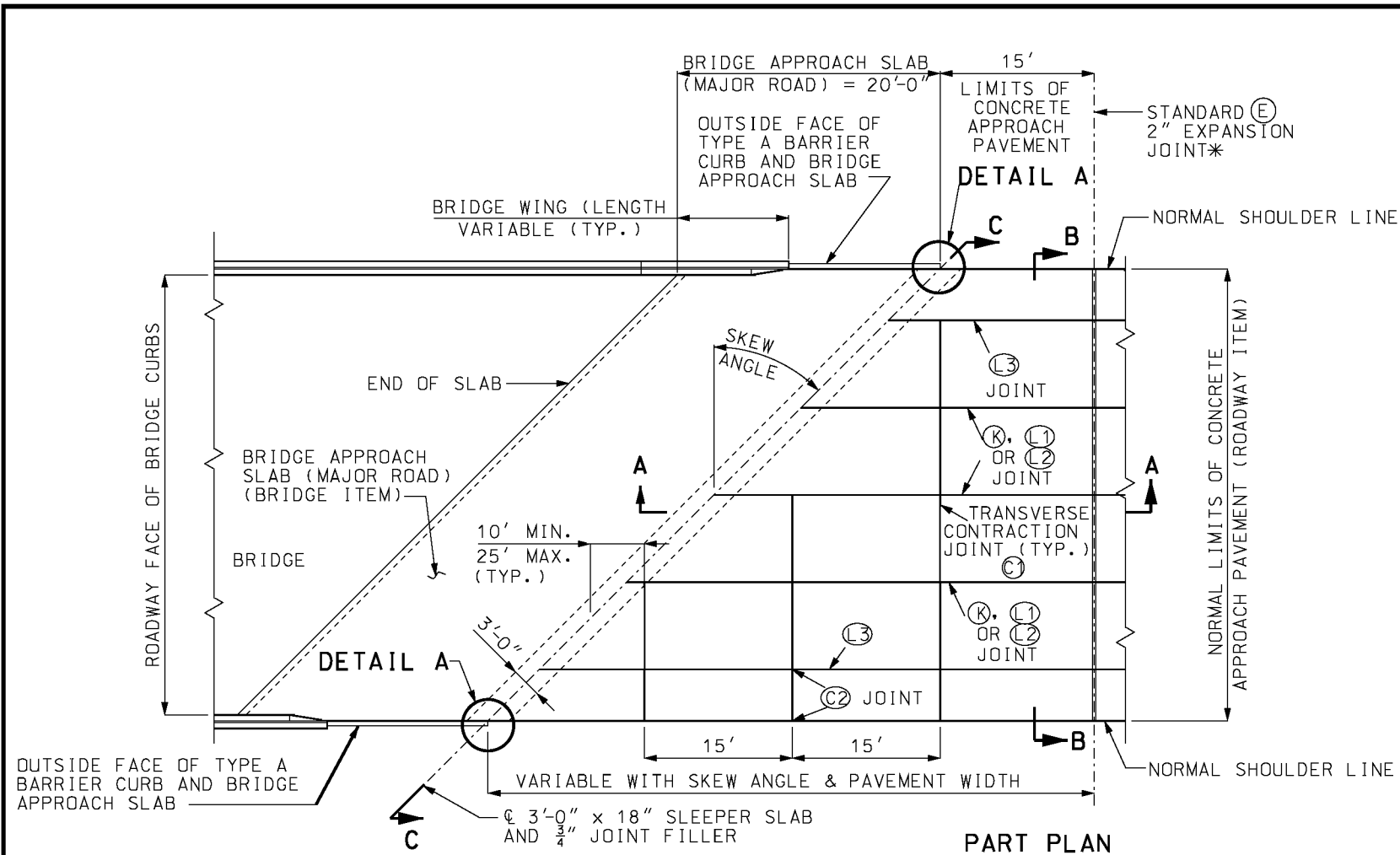
FOR BRIDGE APPROACH SLAB, SLEEPER SLAB, AND JOINT FILLER DETAILS, SEE BRIDGE PLANS.

A PRE-FORMED FIBER EXPANSION JOINT MATERIAL SHALL BE PLACED WITH CONCRETE APPROACH PAVEMENT AND MEET THE REQUIREMENTS OF SECTION 1057 OF THE STANDARD SPECIFICATION FOR HIGHWAY CONSTRUCTION.

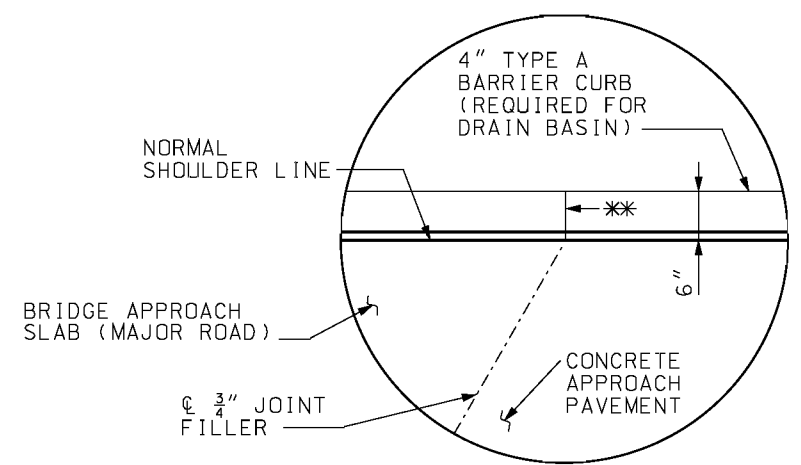
COST OF FURNISHING AND PLACEMENT OF 4" TYPE 5 AGGREGATE BASE AND 3/4" JOINT FILLER IS INCLUDED IN CONTRACT UNIT BID PRICE FOR CONCRETE APPROACH PAVEMENT.

 <b>MISSOURI HIGHWAYS AND TRANSPORTATION COMMISSION</b> 105 WEST CAPITOL JEFFERSON CITY, MO 65102 1-888-ASK-MODOT (1-888-275-6636)	
	<p align="center"><b>CONCRETE APPROACH PAVEMENT</b></p> <p align="center">FOR TWO-LANE PAVEMENTS (MAJOR ROAD)</p>
DATE EFFECTIVE: 07/01/2015 DATE PREPARED: 5/29/2015	<p align="center"><b>504.00J</b></p>
SHEET NO. 1 OF 3	

IF A SEAL IS PRESENT ON THIS SHEET IT HAS BEEN ELECTRONICALLY SEALED AND DATED.





\* NOT REQUIRED WHEN ADJACENT PAVEMENT IS ASPHALT.



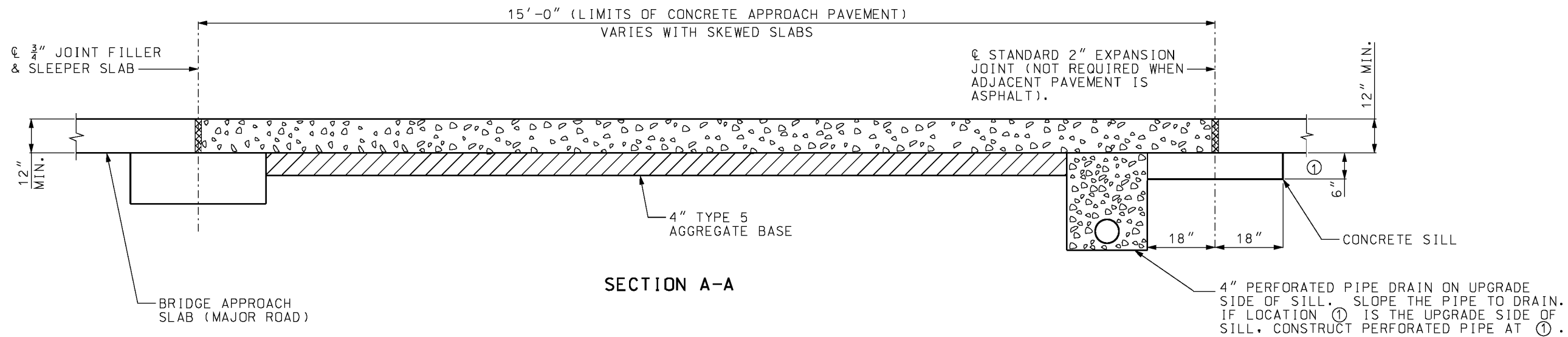
DETAIL A

\* USE 3/4" JOINT FILLER BETWEEN TYPE A CURBS

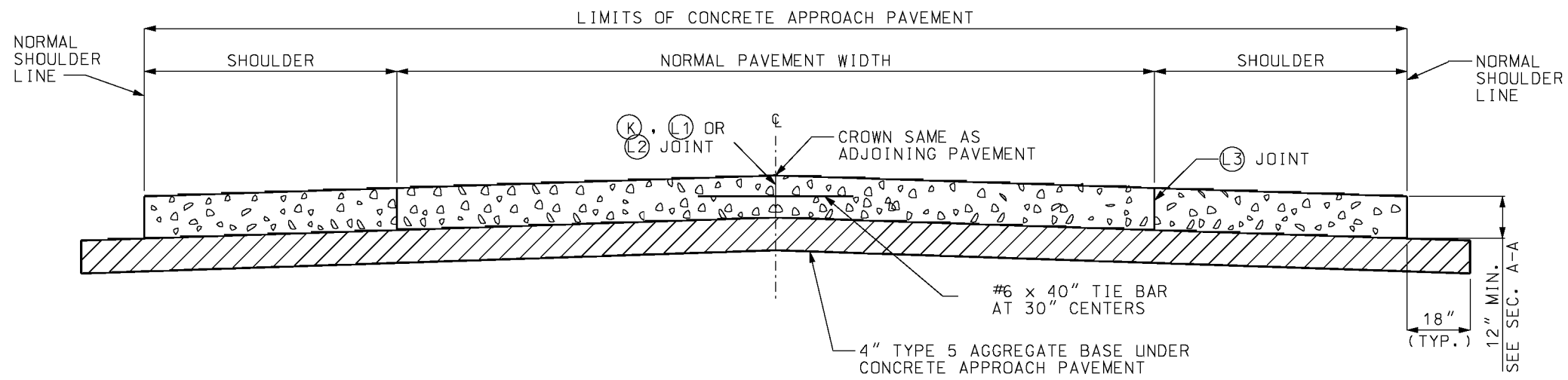
NOTE:  
FOR SECTIONS A-A, B-B AND C-C,  
SEE SHEET 3 OF 3.

 <b>MISSOURI HIGHWAYS AND TRANSPORTATION COMMISSION</b>	
105 WEST CAPITOL JEFFERSON CITY, MO 65102 1-888-ASK-MODOT (1-888-275-6636)	
	<b>CONCRETE APPROACH PAVEMENT FOR MULTI-LANE PAVEMENTS (MAJOR ROAD)</b>
DATE EFFECTIVE: 07/01/2015 DATE PREPARED: 5/29/2015	<b>504.00J</b>
	SHEET NO. <b>2 OF 3</b>

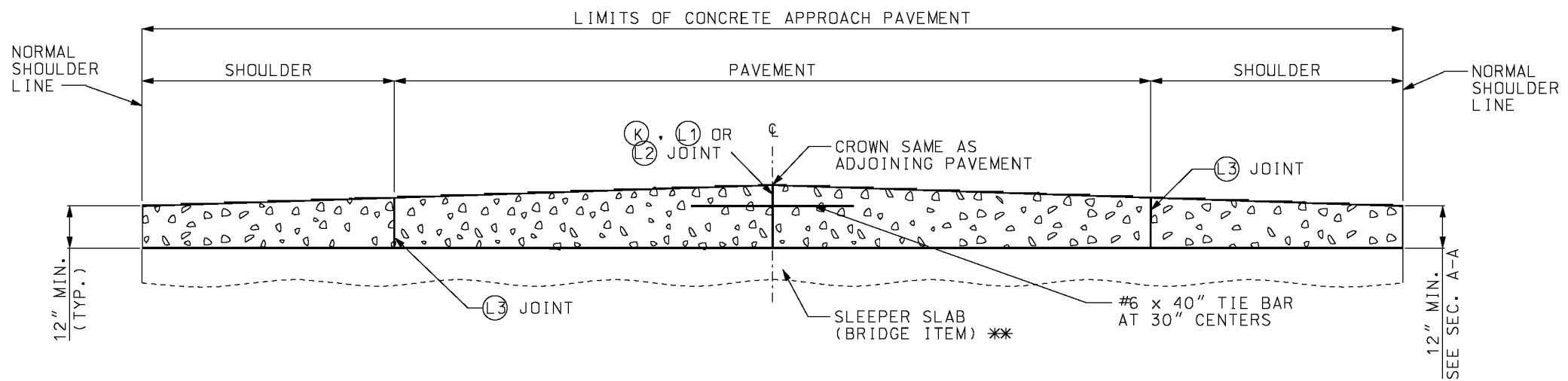
IF A SEAL IS PRESENT ON THIS SHEET IT HAS BEEN ELECTRONICALLY SEALED AND DATED.



SECTION A-A



SECTION B-B




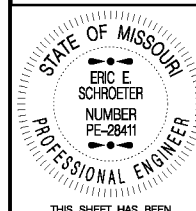
SECTION C-C

\* \* \* TOP OF SLEEPER SLAB MAY BE FLAT OR CROWNED. SEE BRIDGE PLANS.

FOR LOCATIONS OF SECTIONS A-A, B-B AND C-C, SEE SHEETS 1 AND 2.

GENERAL NOTES:

SEE STANDARD DRAWING 605.10 FOR PIPE OUTLET DETAIL FROM SHOULDER POINT TO INSLOPE.

 <b>MISSOURI HIGHWAYS AND TRANSPORTATION COMMISSION</b> 105 WEST CAPITOL JEFFERSON CITY, MO 65102 1-888-ASK-MODOT (1-888-275-6636)	
	<p><b>CONCRETE APPROACH PAVEMENT (MAJOR ROAD)</b></p>
DATE EFFECTIVE: 07/01/2015 DATE PREPARED: 5/29/2015	<p><b>504.00J</b></p>
SHEET NO. 3 OF 3	