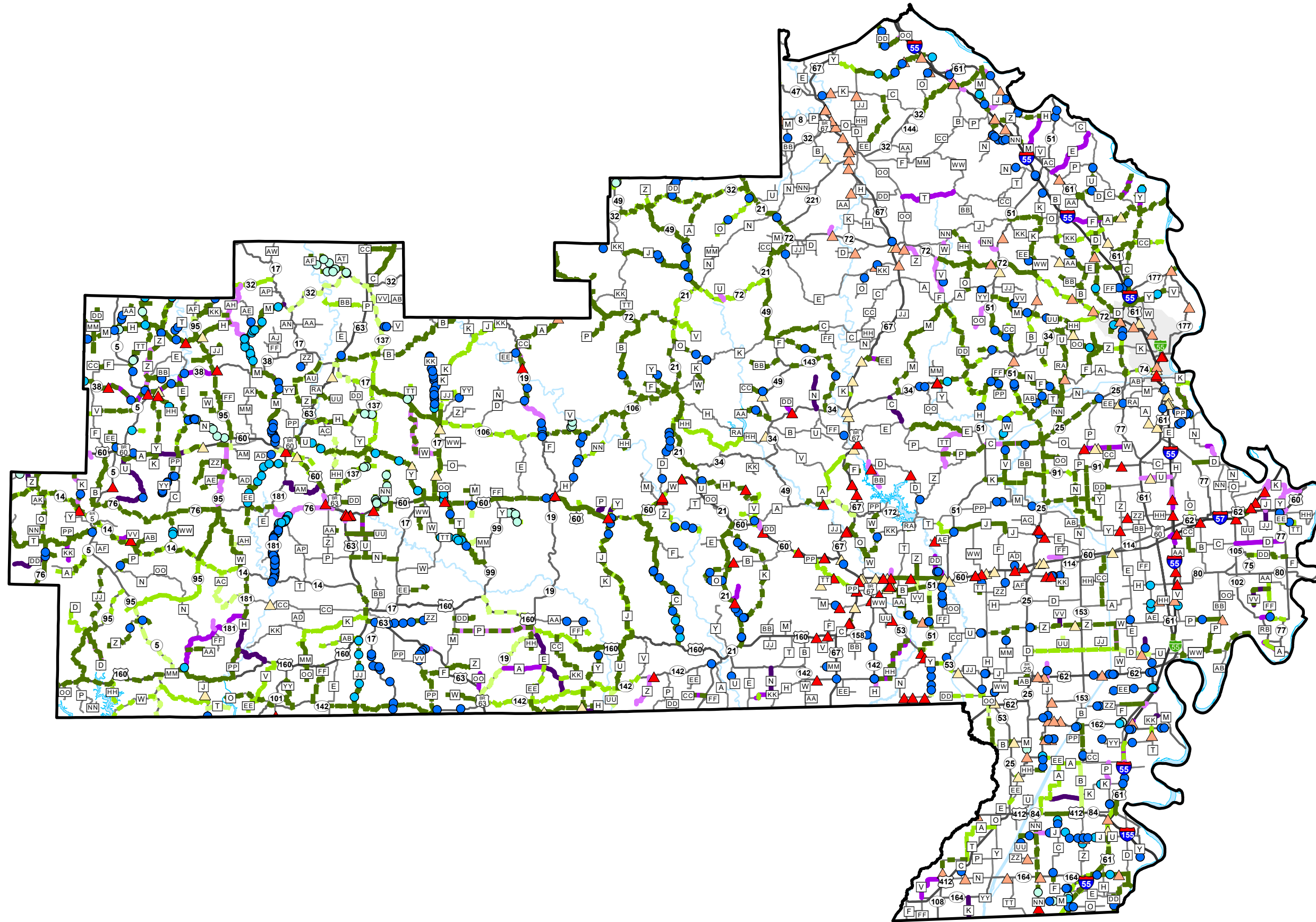


Maintenance Operations Pavement and Bridge Work Plan Calendar Year 2026-2028



SOUTHEAST District

- ▲ 2026 Bridge Deck Sealing
- 2026 Pipe Replacement
- 2026 Pavement Repair
- ▬ 2026 Pavement Treatments
- ▲ 2027 Bridge Deck Sealing
- 2027 Pipe Replacement
- 2027 Pavement Repair
- ▬ 2027 Pavement Treatments
- ▲ 2028 Bridge Deck Sealing
- 2028 Pipe Replacement
- 2028 Pavement Repair
- ▬ 2028 Pavement Treatments

SFY 2025 Expenditures on all Transportation System Operations

Roadway:	\$43,600,000
Utilities and Tools:	\$21,200,000
Roadside:	\$9,100,000
Winter:	\$7,700,000
Incident Management:	\$3,200,000
Bridge:	\$3,900,000
Other ¹ :	\$3,000,000

¹ Includes insurance for general liability, vehicle liability and workers compensation.
*Note: These expenditures represent Labor, Equipment & Materials.

MoDOT Annually (Statewide):

- Mows about 200,000 acres per cycle
- Manages over 2,725 Traffic Signals
- 299 Message Signs
- 1,364 Traffic Cameras
- Striping over 55,000 line miles
- Repairs over 9,500 lane miles of edge ruts
- Sweeping over 16,700 shoulder miles
- Replace over 133,000 linear feet of culvert pipe
- Flush over 5,000 bridges at least once

Work depicted on this map may change due to winter weather impacts or various impacts such as flooding, disasters or other immediate priorities that may occur or may be identified prior to the implementation of the various work plans.



DRAFT