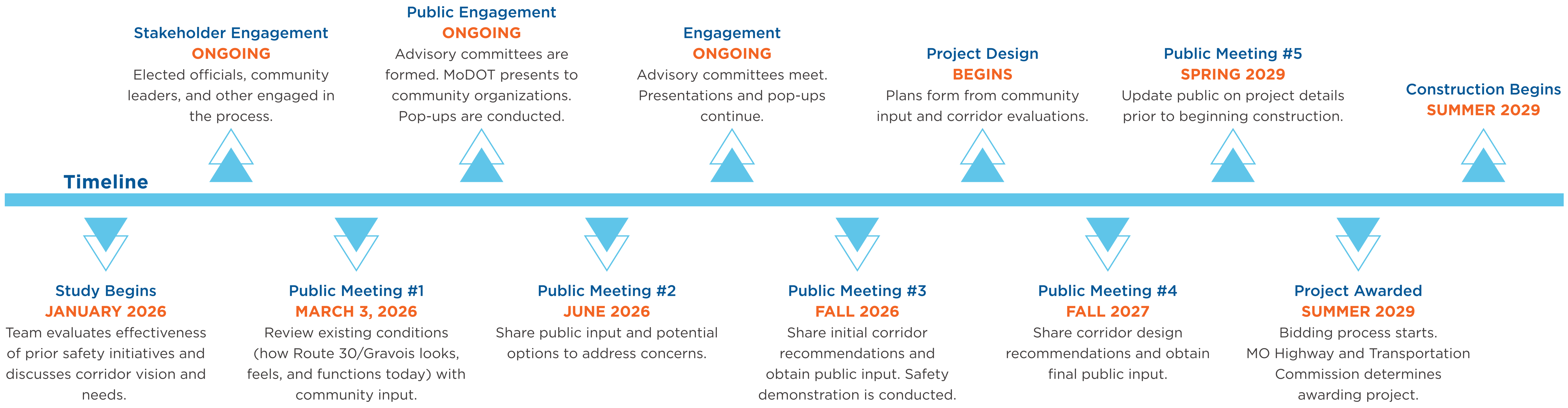




# ABOUT THE PROJECT




### ABOUT THE PROJECT

- 5.7 MILE CORRIDOR
- OWNED BY THE CITY OF ST. LOUIS, MAINTAINED BY MODOT
- 4 DISTINCT CHARACTER AREAS
- PROJECT PARTNERS: MODOT, CITY OF ST. LOUIS, METRO/BI-STATE DEVELOPMENT, COMMUNITY PARTNERS, RESIDENTS, BUSINESSES, AND MOST IMPORTANTLY -- YOU!
- THE PROJECT TEAM IS EVALUATING THE **CONDITION, SAFETY, AND LONG-TERM NEEDS** OF ROUTE 30 (GRAVOIS) IN ADVANCE OF THE CORRIDOR'S RESURFACING AND REPAVING IN 2029.
- **PROJECT GOAL:** TO IDENTIFY OPPORTUNITIES TO IMPROVE SAFETY WHILE MAINTAINING GRAVOIS' ROLE AS AN IMPORTANT TRANSPORTATION CORRIDOR.



### WHY IS THIS PROJECT HAPPENING?

- 2,857 TOTAL CRASHES BETWEEN 2020 - 2025 (6 YEARS)
- 27 FATALITIES (INCLUDING 12 PEDESTRIANS)
- 98 SERIOUS INJURIES (INCLUDING 23 PEDESTRIANS, AND 2 CYCLISTS)
- 826 MINOR INJURIES (INCLUDING 39 PEDESTRIANS AND 10 CYCLISTS)
- MODOT RESURFACES STREETS ON A REGULAR CYCLE AND ROUTE 30 (GRAVOIS) HAS REACHED ITS TIMEFRAME FOR DESIGN TO ACHIEVE REPAVING ON THE REGULAR TIMELINE



### WHO IS IN CHARGE OF WHAT ON GRAVOIS?

**MoDOT**

ROADWAY MAINTENANCE FROM CURB TO CURB: PAVEMENT, STRIPING, TRAFFIC SIGNALS, SIGNS, AND STREET SWEEPING

**CITY OF ST. LOUIS**

SIDEWALKS, LIGHTING, DRAINAGE, LANDSCAPING, PERMITS, ROAD ACCESS, AND INTERSECTING STREETS