



UNSIGNALIZED INTERSECTIONS

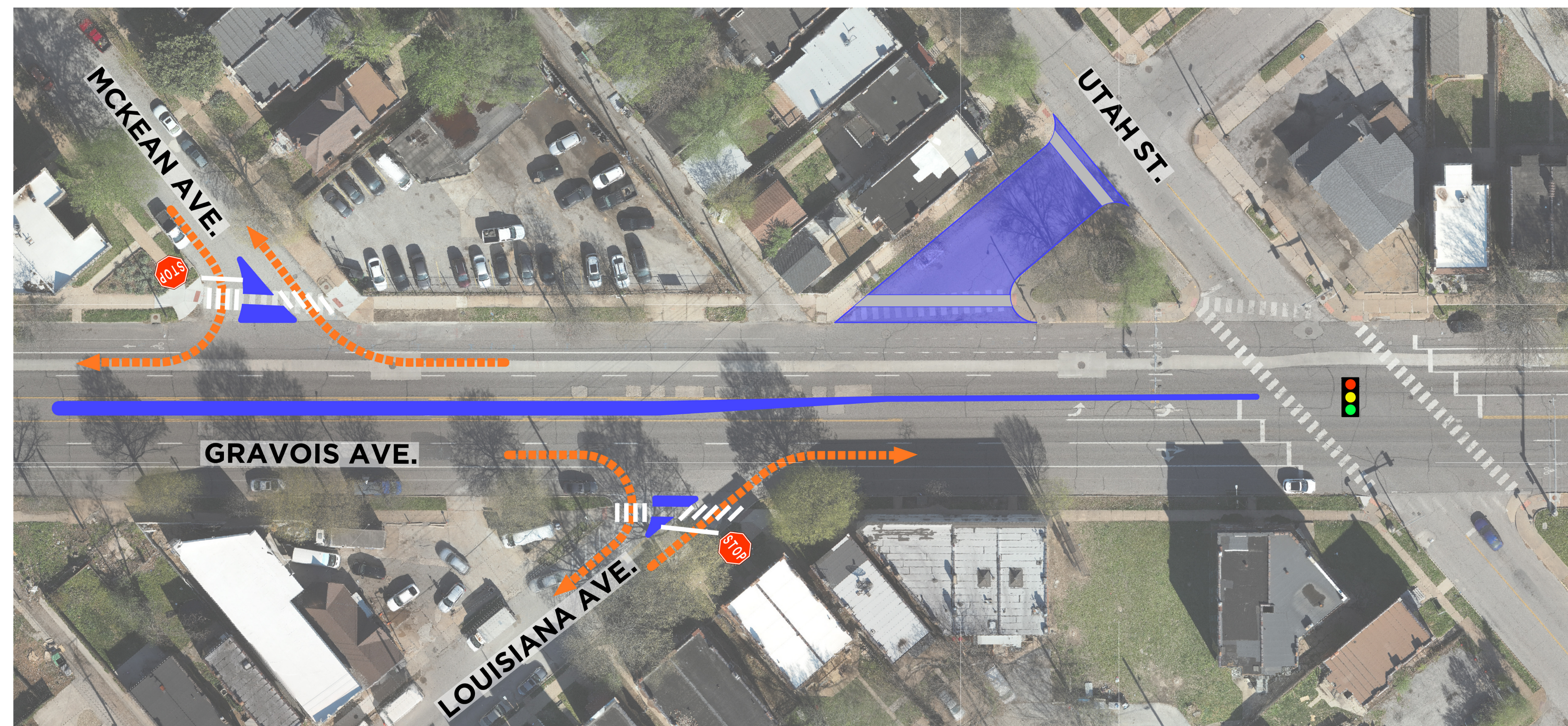
It is important to consider solutions that enhance safety while avoiding conditions that make Gravois feel like a **speedway**. Past efforts related to side street closures on Gravois have generated strong feedback. Closing a leg is just one option, and partial access treatments can also improve safety.

The below candidates for access changes were identified based on crash history and availability of nearby, alternative routes:

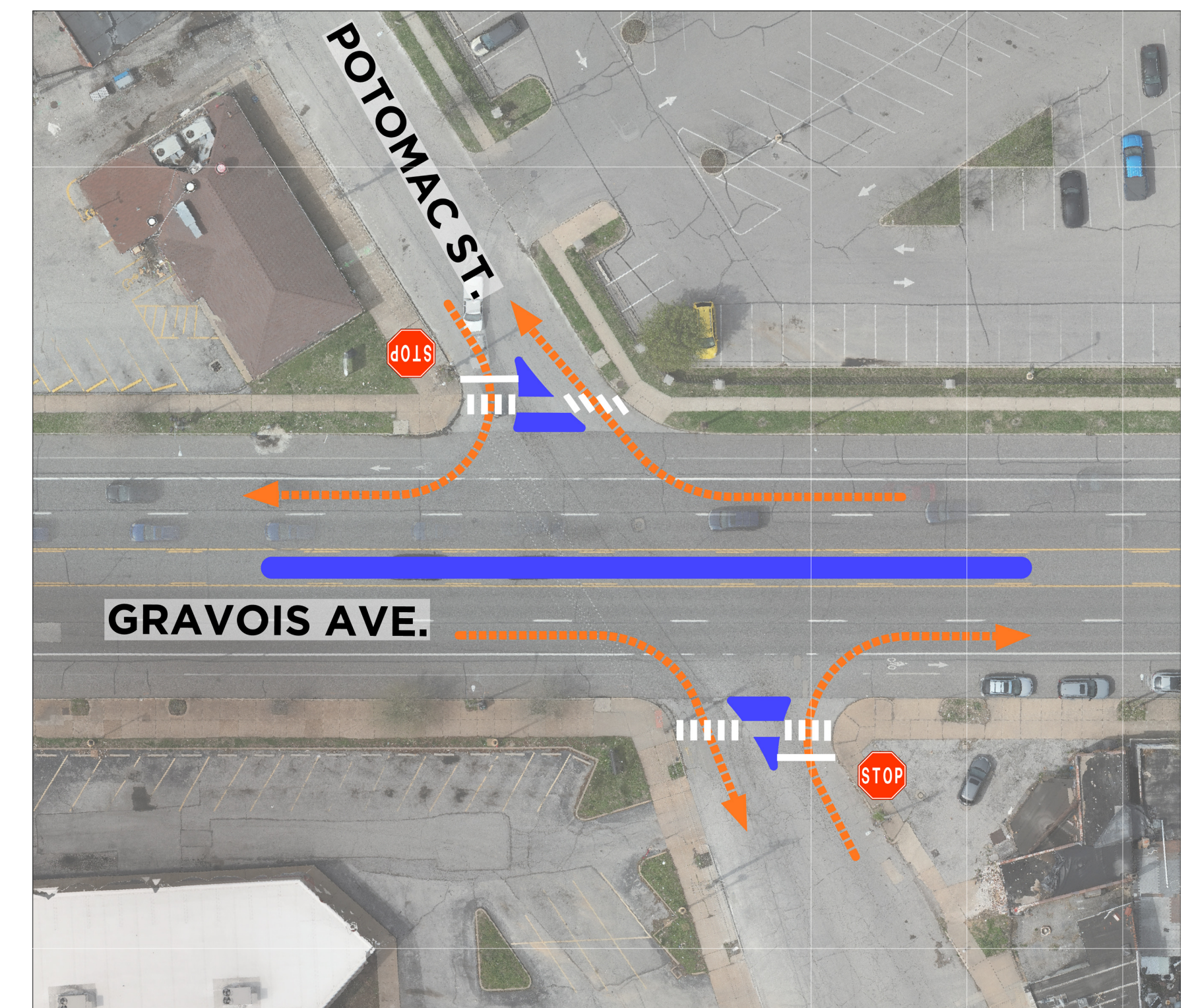
- Rosa
- Dunnica
- Hydraulic/Bamberger*
- Potomac
- McKean/Louisiana/Virginia*
- Michigan/Minnesota/Juniata*
- Pestalozzi*
- Texas
- Victor*
- 13th/Allen

** Indicates an intersection identified for access change in previous local planning effort.*

WHAT ARE YOUR THOUGHTS ON CHANGING ACCESS AT THESE LOCATIONS?



ACCESS CHANGE EXAMPLE AT LOUISIANA AVENUE



ACCESS CHANGE EXAMPLE AT POTOMAC STREET