

# MoDOT Northeast District 2026 Construction Guide



## Adair County

- **Bus. Route 63:** Sidewalk (ADA) Improvements - East Illinois Street to East Patterson Street in Kirksville
- **Route 149:** Seal Coat - Route AA in Putnam County to Route 6 near Novinger in Adair County
- **Route 149:** Sidewalk (ADA) Improvements - Tenth Street to Second Street in Novinger
- **Route H:** Resurfacing - LaHarpe Street to Route 11 in Kirksville
- **Route O:** Sidewalk (ADA) Improvements - Oakland Avenue to Corrigan Street in Novinger
- **Route P:** Resurfacing - Bus. Route 63 to Route 63 in Kirksville
- **Route P:** Resurfacing - 0.3 mile east of Route 63 to Bass Way near Kirksville

## Audrain County

- **Route 15:** ADA/Resurfacing/Signals - 0.4 mile north of Wade Street to Bus. Route 54/Clark Street in Mexico *(Est. Completion July 2027)*
- **Route 22:** ADA/Resurfacing/Signals - South Morris Street to Route 15/Western Street in Mexico *(Est. Completion July 2027)*
- **Route 22:** Resurfacing - 0.1 mile west of Route E near Thompson to Morris Street in Mexico
- **Bus. Route 54:** ADA/Signals - Route J to Route 15/Clark Street in Mexico *(Est. Completion July 2027)*
- **Bus. Route 54:** ADA/Resurfacing/Signals - Boulevard Street to CR 9913, 0.24 mile north of Route 54 in Mexico *(Est. Completion July 2027)*
- **Route J:** ADA/Signals - East Liberty Street to East Promenade Street in Mexico *(Est. Completion July 2027)*
- **Route AA:** ADA - East Athey Street to 0.05 mile north of Doyle Street in Farber *(Est. Completion July 2027)*
- **Route NN:** Resurfacing - Route 22 near Mexico to the end of state maintenance
- **Route CRD Liberty Street:** ADA/Signals - Johnson Street to Martin Luther King Drive in Mexico *(Est. Completion July 2027)*

## Clark County

- **Route A:** Seal Coat - Route 136 near Luray in Clark County to Route 16 in Monticello in Lewis County
- **Route H:** Seal Coat - Route 81 near Kahoka to Route 61 near Winchester



# MoDOT Northeast District 2026 Construction Guide



## Knox County

- **Route 15:** Seal Coat - Route 136 west junction in Memphis in Scotland County to Route 6 north junction in Edina in Knox County

## Lewis County

- **Route A:** Seal Coat - Route 136 near Luray in Clark County to Route 16 in Monticello in Lewis County
- **Route C:** Resurfacing - Route 6 in Ewing to Route B/Main Street in La Grange
- **Route V:** Sidewalk (ADA) Improvements - Olive Avenue to 292nd Avenue in Maywood

## Lincoln County

- **Route 47:** Pavement, Safety and Shoulder Improvements - Routes A/D in Hawk Point to 0.1 mile west of Routes H/J in Troy (*Est. Completion July 2028*)
- **Route 47:** Resurfacing - Turnbull Trail to 0.1 mile west of Routes H/J in Troy
- **Route 61 Outer Road:** Resurfacing - Route V to Route C near Moscow Mills (*eight disconnected sections - see below*)
  - **Route 61 Outer Road** - 0.10 mile east of Route 61 to Route KK
  - **Route 61 Outer Road** - Route KK to end of state maintenance
  - **Route 61 Outer Road/North Lincoln Drive** - 0.14 mile north of Estates Drive to 0.25 mile north of Woods Fort Drive
  - **Route 61 Outer Road/Dugan Lane** - 0.02 mile east to 0.3 mile of Route 61
  - **Route 61 Outer Road/Frenchmans Bluff Road** - 0.22 mile north of Route 47 to 0.6 mile south of Dugan Lane
  - **Route 61 Outer Road/John Deer Drive/College Campus Drive** - Bueneman Lane to Route C
  - **Route 61 Outer Road** - Route U to end of state maintenance
  - **Route 61 Outer Road** - John Creech Road to end of state maintenance
- **Route B:** Seal Coat - Route 61 near Auburn to Route 79 at Elsberry
- **Route J:** Bridge Replacement - Over Big Creek, 0.2 mile south of Route U, near Troy
- **Route U:** Seal Coat - Route 47 near Hawk Point to 0.7 mile west of Route 61 near Moscow Mills (*two disconnected sections*)
- **Route W:** Seal Coat - Route B near New Hope to Route KK at Brussels



# MoDOT Northeast District 2026 Construction Guide



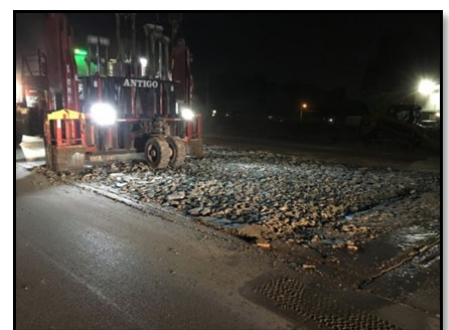
- **Route W:** Resurfacing - Route KK to Route 47 near Troy
- **Route EE:** Resurfacing - Route Y to Route 47 near Winfield

## Macon County

- **Route 36 (Eastbound):** Pavement Resurfacing and Bridge Rehabilitation - 0.5 mile west of Route O in Bevier to 0.1 mile east of Kellogg Avenue near Macon
- **Route 36 (Westbound):** Pavement Resurfacing and Bridge Rehabilitation - Kellogg Avenue in Macon to 1.7 miles west of Route O in Bevier
- **Route 36:** Resurfacing and Intersection Safety Improvements - Route 36 and Kellogg Avenue median crossover in Macon
- **Route 63:** Interchange Improvements - Bridge rehabilitation, ramp terminal realignments, and intersection signal and lighting updates at the Route 36 interchange ramp terminals and Route 63/Bus. Route 36/W. Briggs Drive in Macon
- **Route 149:** Sidewalk (ADA) Improvements - North Commercial Street to Walnut Street in Ethel
- **Route 156:** Sidewalk (ADA) Improvements - South Hastings Street to just east of Tremont Street in La Plata
- **Route 156:** Sidewalk (ADA) Improvements - 50 feet west of South Macon Street to South Main Street in South Gifford
- **Route C:** Sidewalk (ADA) Improvements - Route T north junction to Route T south junction in College Mound
- **Route D:** Resurfacing - Route 63 to Route 156 in La Plata
- **Route J:** Sidewalk (ADA) Improvements - East Missouri Avenue to South Elm Street in Elmer
- **Route Y:** Seal Coat - Route 63 near Excello in Macon County to Route J in Randolph County
- **Route VV:** Bridge Replacement - Over BNSF Railway, 0.2 mile south of Arctic Road, near Hart (*Est. Completion June 2027*)
- **Route YY:** Resurfacing - Route 63 to the end of state maintenance, near Cox

## Marion County

- **Route 36 (Eastbound):** Pavement Repairs - 0.5 mile east of North Fork Salt River near Hunnewell in Shelby County to 0.4 mile east of Route CRD 381 at Monroe City in Marion County
- **Route 72:** Bridge Washing - Mark Twain Memorial Bridge, over the Mississippi River, at Hannibal
- **Route 168:** Diamond Grinding - 0.1 mile east of Route BB in Palmyra to 0.2 mile east of Route JJ



# MoDOT Northeast District 2026 Construction Guide



- **Route A:** Seal Coat - Route 6, near Maywood to Route 168
- **Route H:** Seal Coat - Route 36 near Rensselaer in Marion County to Route 19 in Center in Ralls County
- **Route JJ:** Diamond Grinding - Route 168 to the end of state maintenance at South River

## Monroe County

- **Route 24:** Culvert Extensions - 0.8 mile west of Route 107 near Stoutsville to Route W at Monroe City

## Montgomery County

- **Route 19:** Intersection Improvements - Stave Mill Road and Route 19 intersection, 0.4 mile south of the I-70 and Route 19 interchange (*Cost Share Project*)
- **Route E/Y:** Bridge Replacement - Over I-70 in Jonesburg
- **Route K:** Bridge Replacement - Over Loutre River, 0.4 mile west of Route 19, near Big Spring
- **Route K:** Bridge Replacement - Over Dry Fork Creek, 1.8 miles west of Route 19, near Big Spring
- **Route CRD Stave Mill Road:** Resurfacing - Route 19 to Bantys Lane (*Cost Share Project*)

## Pike County

- **Route B:** Bridge Replacement - Over Peno Creek, 0.4 mile west of Route 61, near Frankford
- **Route D:** Resurfacing - Route 79 near Louisiana to Route 61 in Eolia
- **Route W:** Bridge Replacement - Over Little Ramsey Creek, 0.5 mile north of Route H, in Paynesville

## Ralls County

- **Route H:** Seal Coat - Route 36 near Rensselaer in Marion County to Route 19 in Center in Ralls County

## Randolph County

- **Bus. Route 63:** Infrastructure Improvements - Widening road to add a center turn lane with ADA improvements - from Burkhart Street to Carpenter Street in Moberly (*Cost Share Project*)\*  
\* This project will be administered by the City of Moberly, who will be the primary contact for project details and questions.



# MoDOT Northeast District 2026 Construction Guide



- **Bus. Route 63:** Resurfacing - Carpenter Street to Route A in Moberly
- **Route Y:** Seal Coat - Route 63 near Excello in Macon County to Route J in Randolph County

## Schuyler County

- **Route D:** Resurfacing - Route U at Lancaster in Schuyler County to Route 15 near Memphis in Scotland County \*\*
- **Route J:** Resurfacing - Route 63 near Greentop to Quail Avenue \*\*
- **Route U:** Resurfacing - Route 136 in Lancaster to Route 63 \*\*
- **Route V:** Resurfacing - Route D to Route 136 in Downing \*\*

## Scotland County

- **Route 15:** Seal Coat - The Iowa State line to Route 136 east junction in Memphis
- **Route 15:** Seal Coat - Route 136 west junction in Memphis in Scotland County to Route 6 north junction in Edina in Knox County
- **Route B:** Seal Coat - Route 136 to the Iowa State line
- **Route D:** Resurfacing - Route U at Lancaster in Schuyler County to Route 15 near Memphis in Scotland County \*\*

## Shelby County

- **Route 15:** Sidewalk (ADA) Improvements - West Elm Street to West Beech Street in Shelbina
- **Route 36 (Eastbound):** Pavement Repairs - 0.5 mile east of North Fork Salt River near Hunnewell in Shelby County to 0.4 mile east of Route CRD 381 at Monroe City in Marion County
- **Route H:** Sidewalk (ADA) Improvements - Route 151/Route M to 0.07 mile north of West Middle Street in Leonard

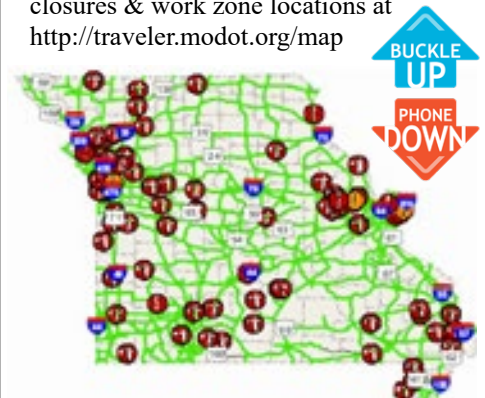
## Warren County

- **Improve I-70 Project #2 - Warrenton to Wentzville:** Safety and Capacity Improvements - Route MM/West Warrenton Boulevard interchange, west of Route 47 in Warrenton in Warren County, to the I-64/I-70 interchange at Wentzville in St. Charles County



## Traveler Information Map

Check MoDOT's Traveler Info Map for weather-related road closures, flood closures & work zone locations at <http://traveler.modot.org/map>



Also available as a free app for android and iPhone devices.



Missouri Department of Transportation  
1-888-ASK MODOT (275-6636)  
[www.modot.org/northeast](http://www.modot.org/northeast)

