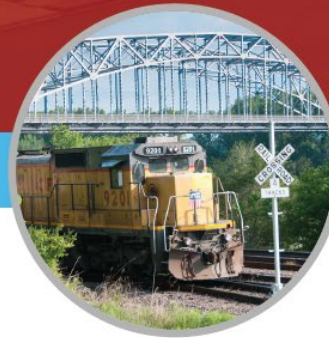


UNFUNDED NEEDS: PUBLIC MEETINGS

St. Louis District

— Missouri — **HIGH-PRIORITY UNFUNDED NEEDS**



Oct. 2025



FUNDING DISTRIBUTION

Fiscal Year 2026 Amounts

Total Distributed Construction Program Funds

\$1,252M

Safety

\$58M

Asset Management

\$887M

System Improvement

\$307M

Distributed based on:

- System size
- System usage
- Fatalities/serious injuries
- Population
- Employment

*Does not include General Assembly Designated Funds



HIGH-PRIORITY UNFUNDED ANNUAL TRANSPORTATION NEEDS
\$1.1 billion

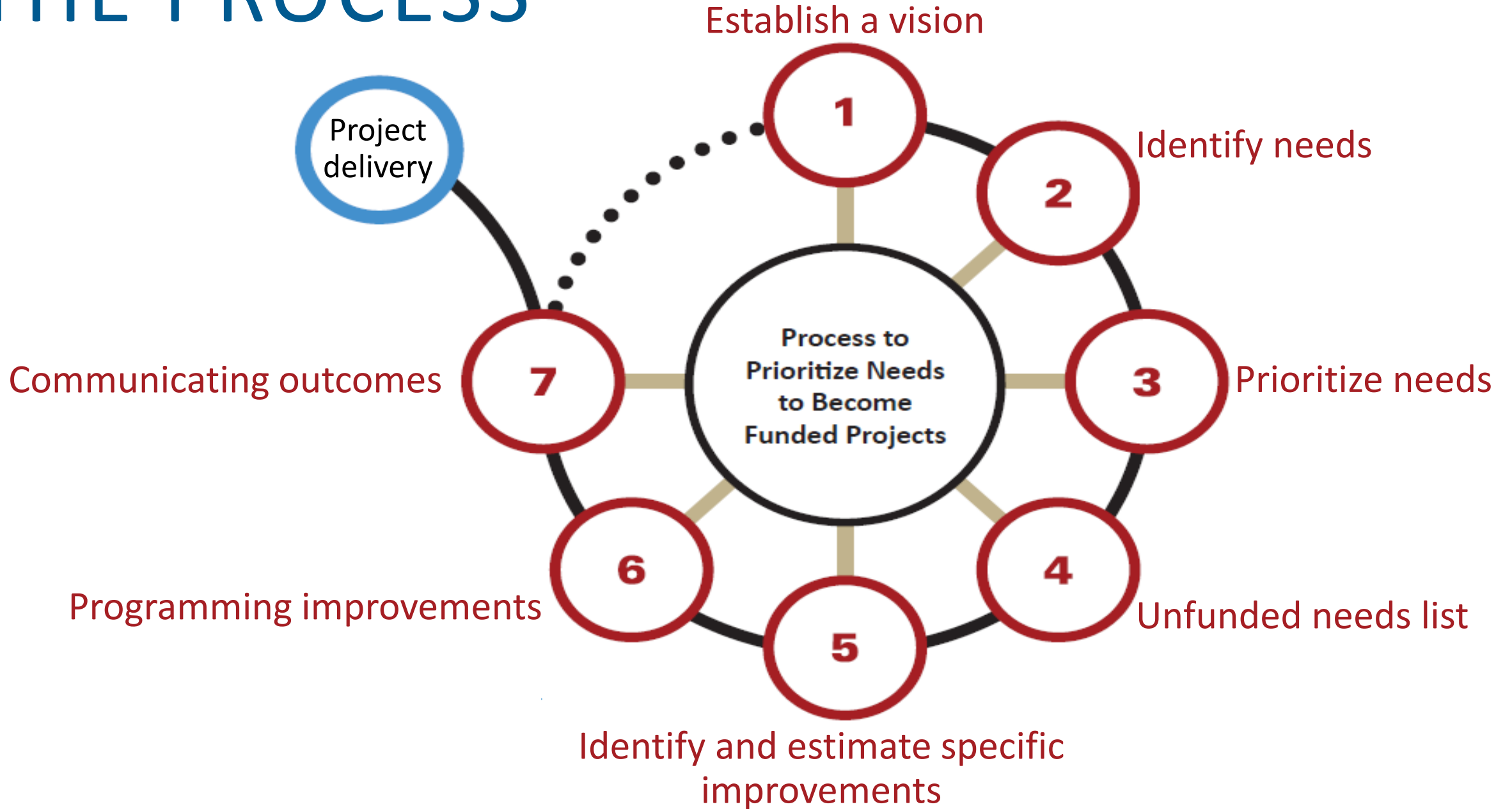


THE NEEDS

THE OUTCOME

- \$4.7 billion of tiered road and bridge needs in new updated document
 - Three tiers
 - Tier one = could be accomplished in the current STIP horizon
- \$1 billion of multimodal needs

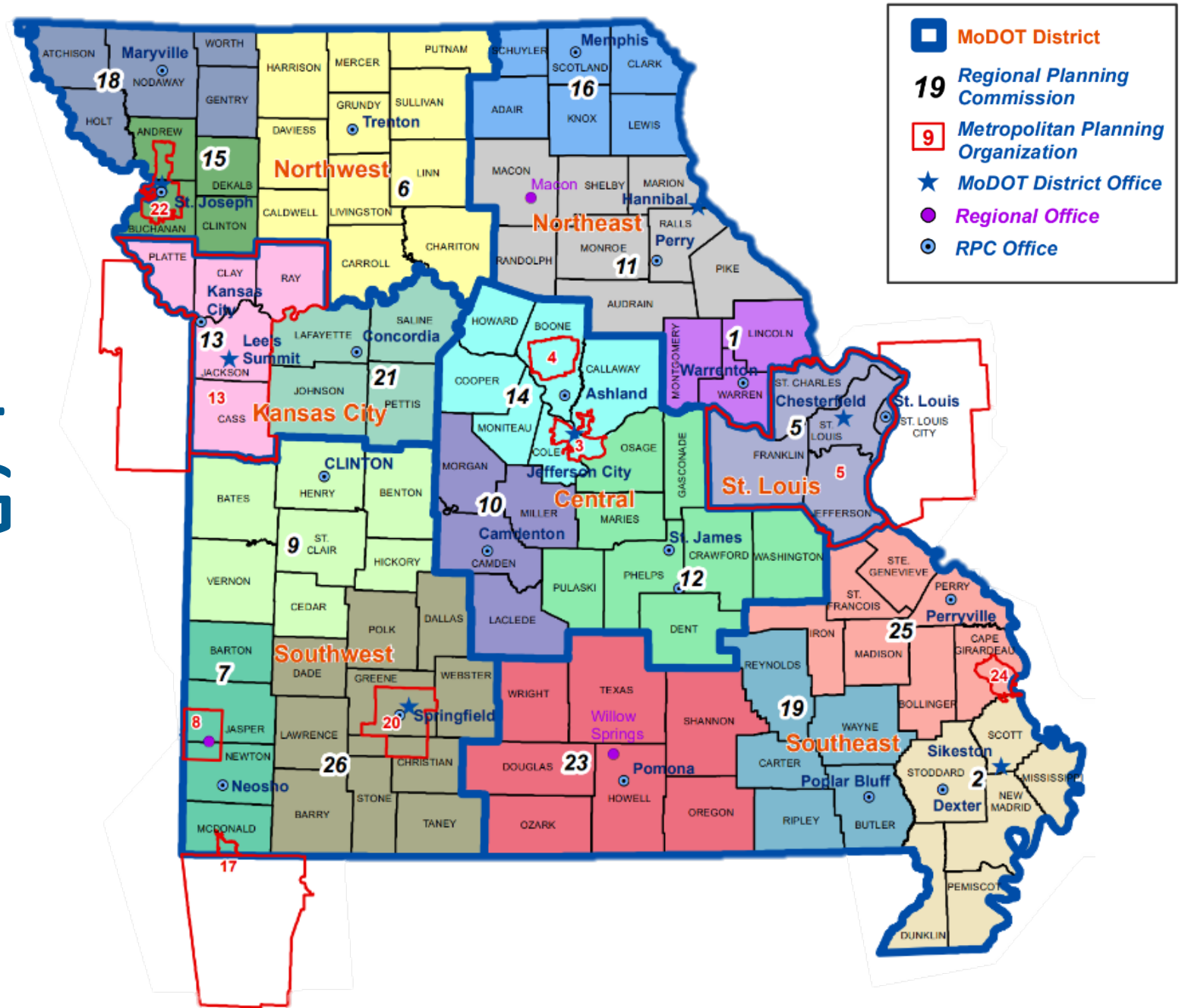
THE PROCESS



3

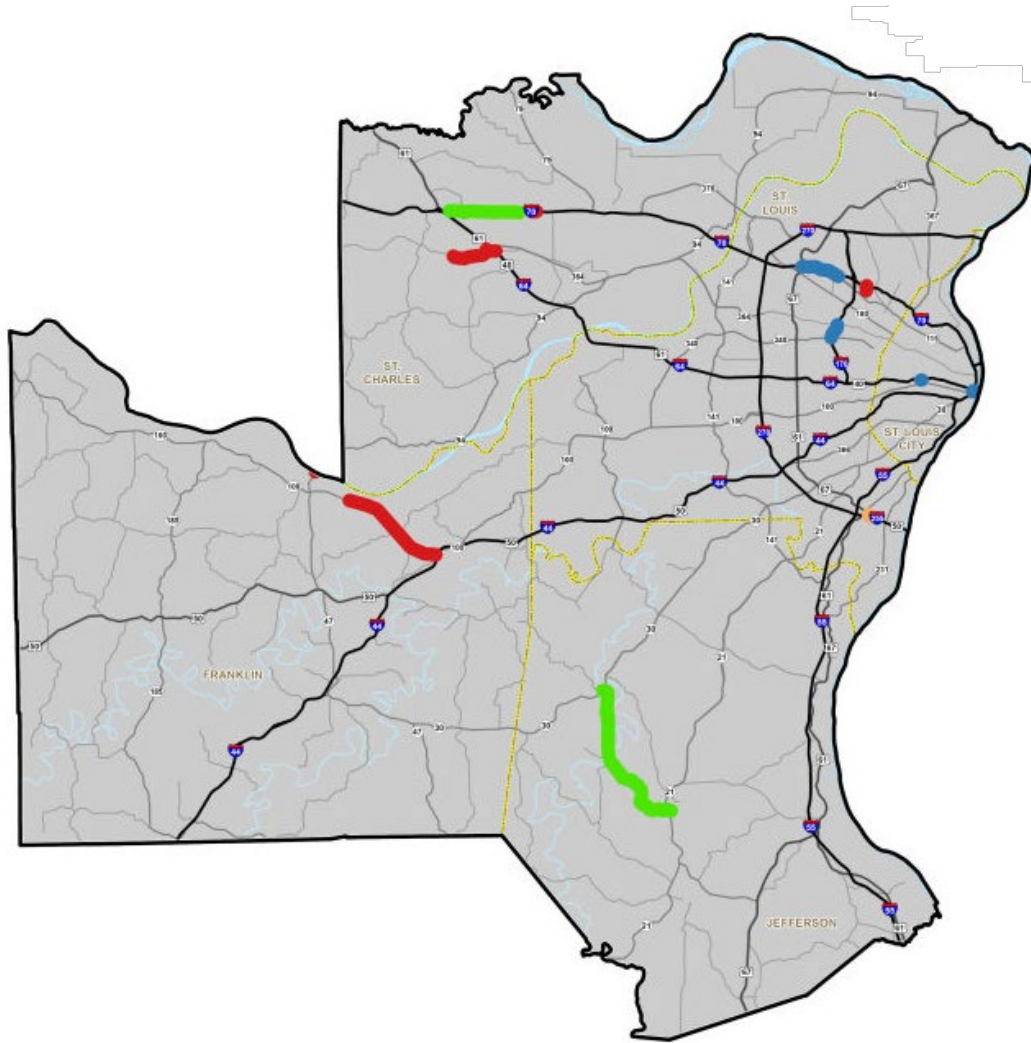
Prioritize needs – MoDOT district offices work with MPOs and RPCs to annually prioritize regional needs, collectively. This requires multiple planning entities within a MoDOT district to work collectively to create priorities among all needs identified, regardless of location. Safety, traffic volume, asset condition data are used to help select the highest priorities within a MoDOT district boundary.

REGIONAL PLANNING PARTNERS



HIGH-PRIORITY UNFUNDED ROAD AND BRIDGE NEEDS

Tier 1 - \$172.5 million



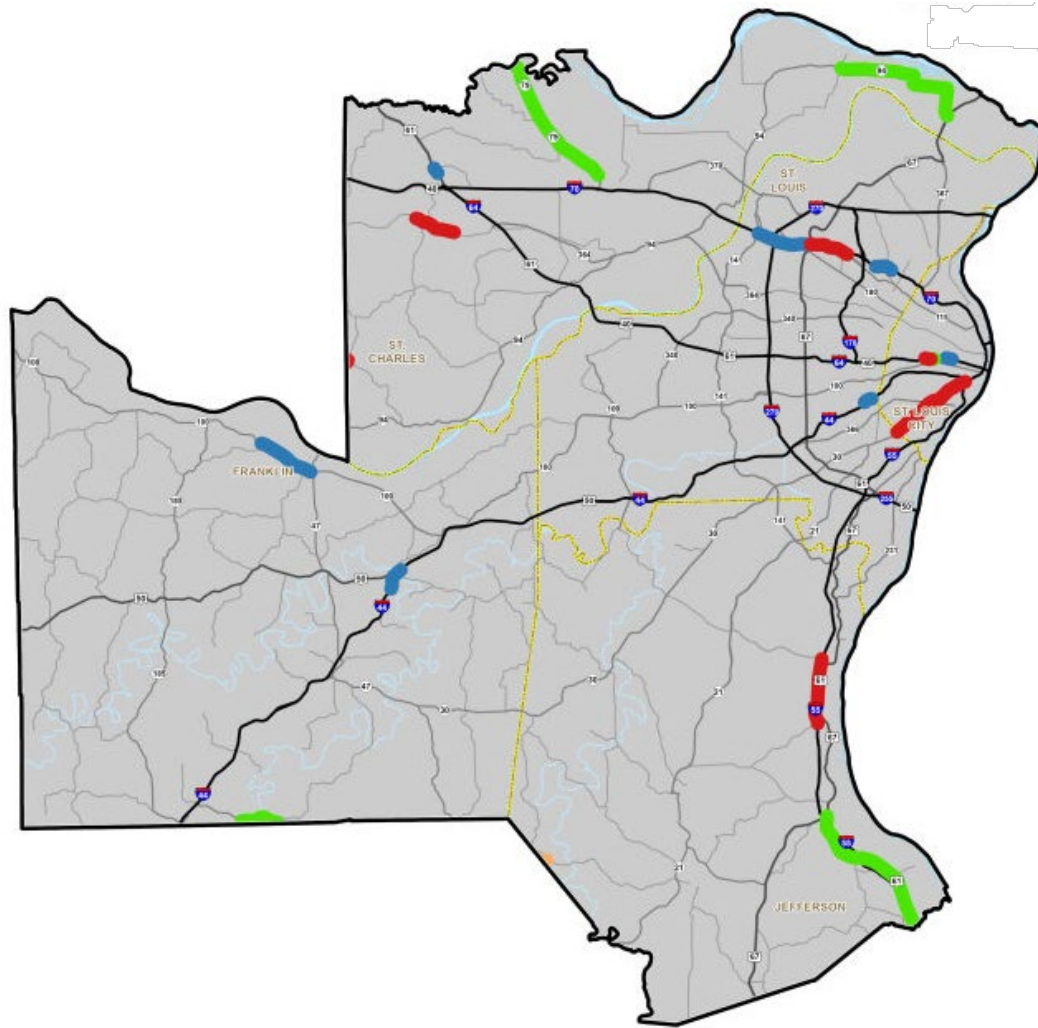
- Improve Bridge Conditions
- Improve Road Conditions
- Increase Economic Growth and Improve Safety
- Major Interstate Construction

ST. LOUIS - TIER 1



HIGH-PRIORITY UNFUNDED ROAD AND BRIDGE NEEDS

Tier 2 - \$840.4 million

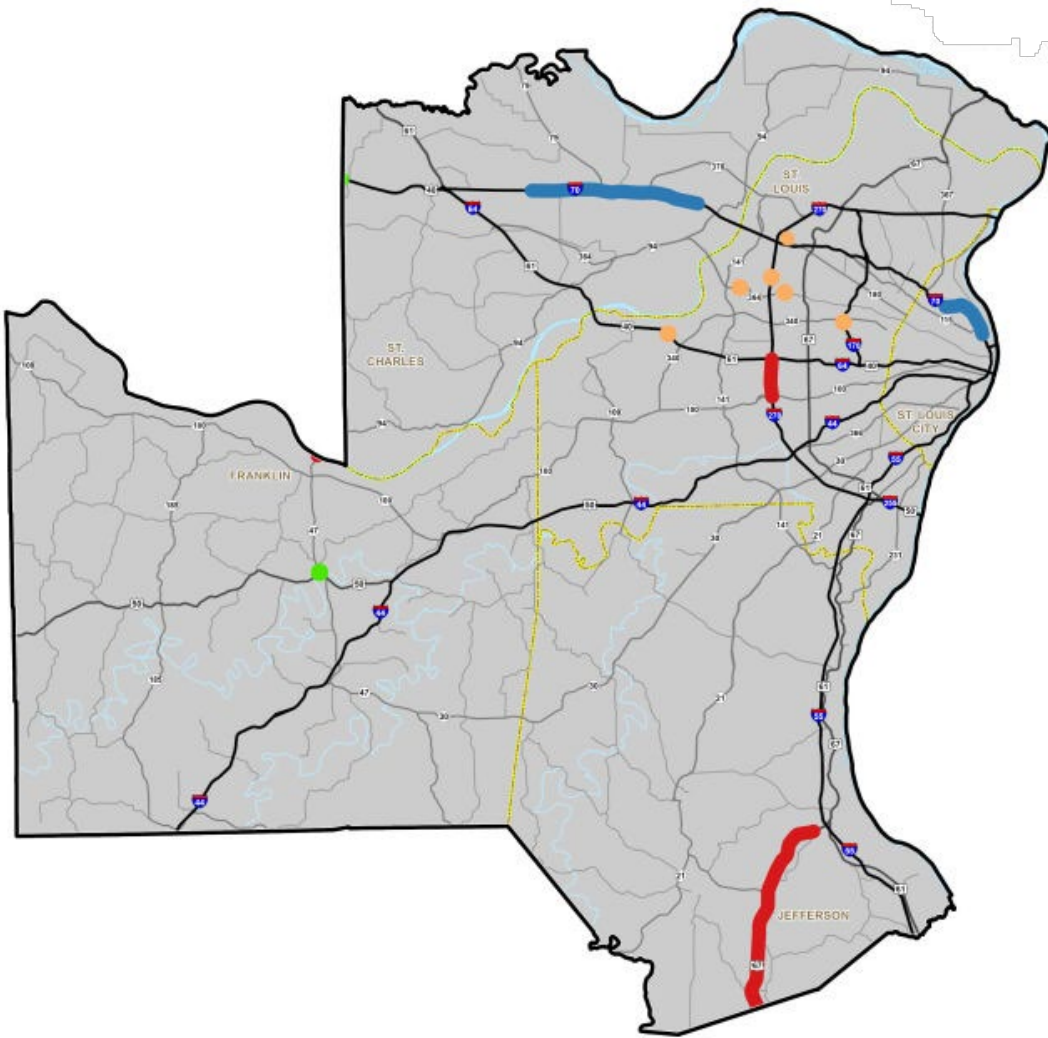


- Improve Bridge Conditions
- Improve Road Conditions
- Increase Economic Growth and Improve Safety
- Major Interstate Construction

ST. LOUIS - TIER 2

HIGH-PRIORITY UNFUNDED ROAD AND BRIDGE NEEDS

Tier 3 - \$567.2 million



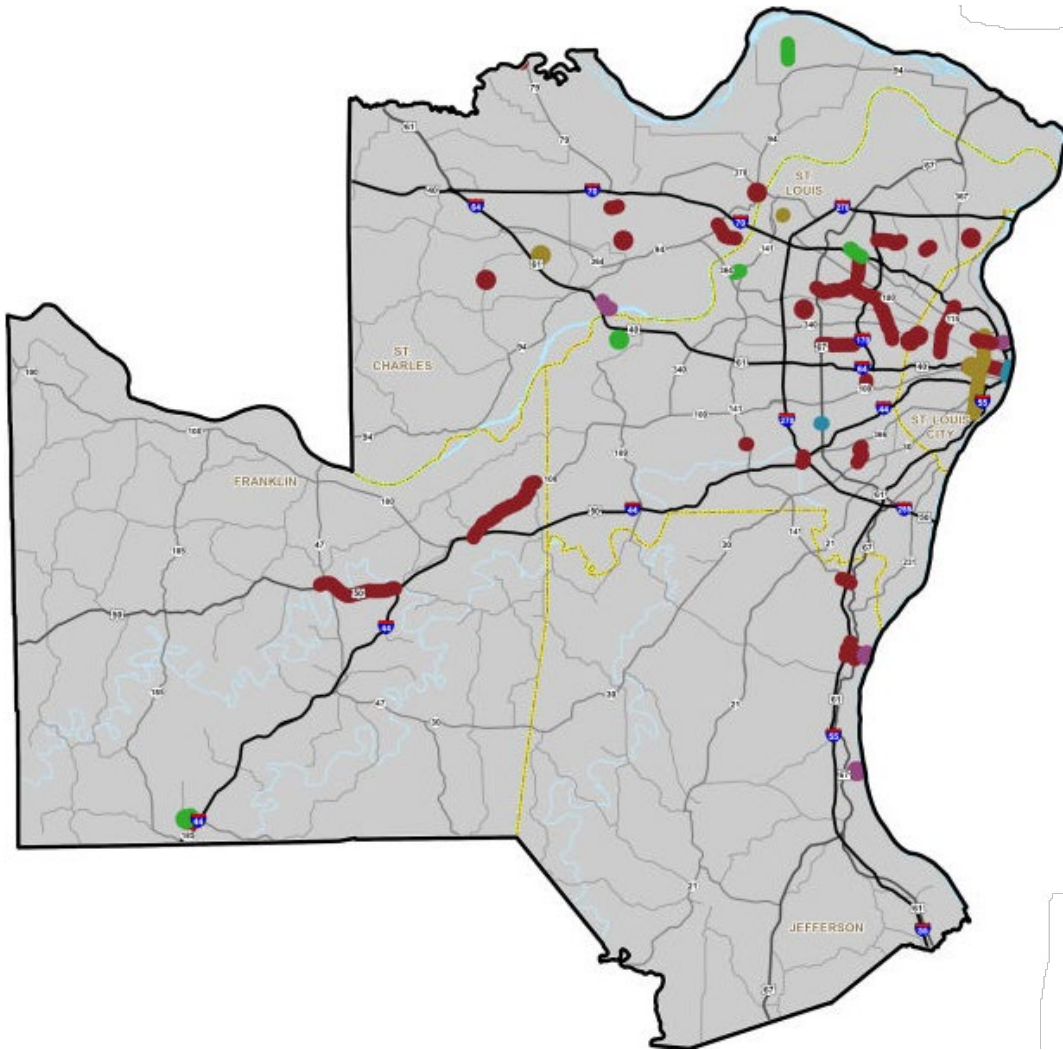
- Improve Bridge Conditions
- Improve Road Conditions
- Increase Economic Growth and Improve Safety
- Major Interstate Construction

ST. LOUIS - TIER 3



HIGH-PRIORITY UNFUNDED MULTIMODAL NEEDS

Multimodal - \$337 million



- ACTIVE TRANSPORTATION
- AVIATION
- FREIGHT
- RAIL
- TRANSIT
- WATERWAYS

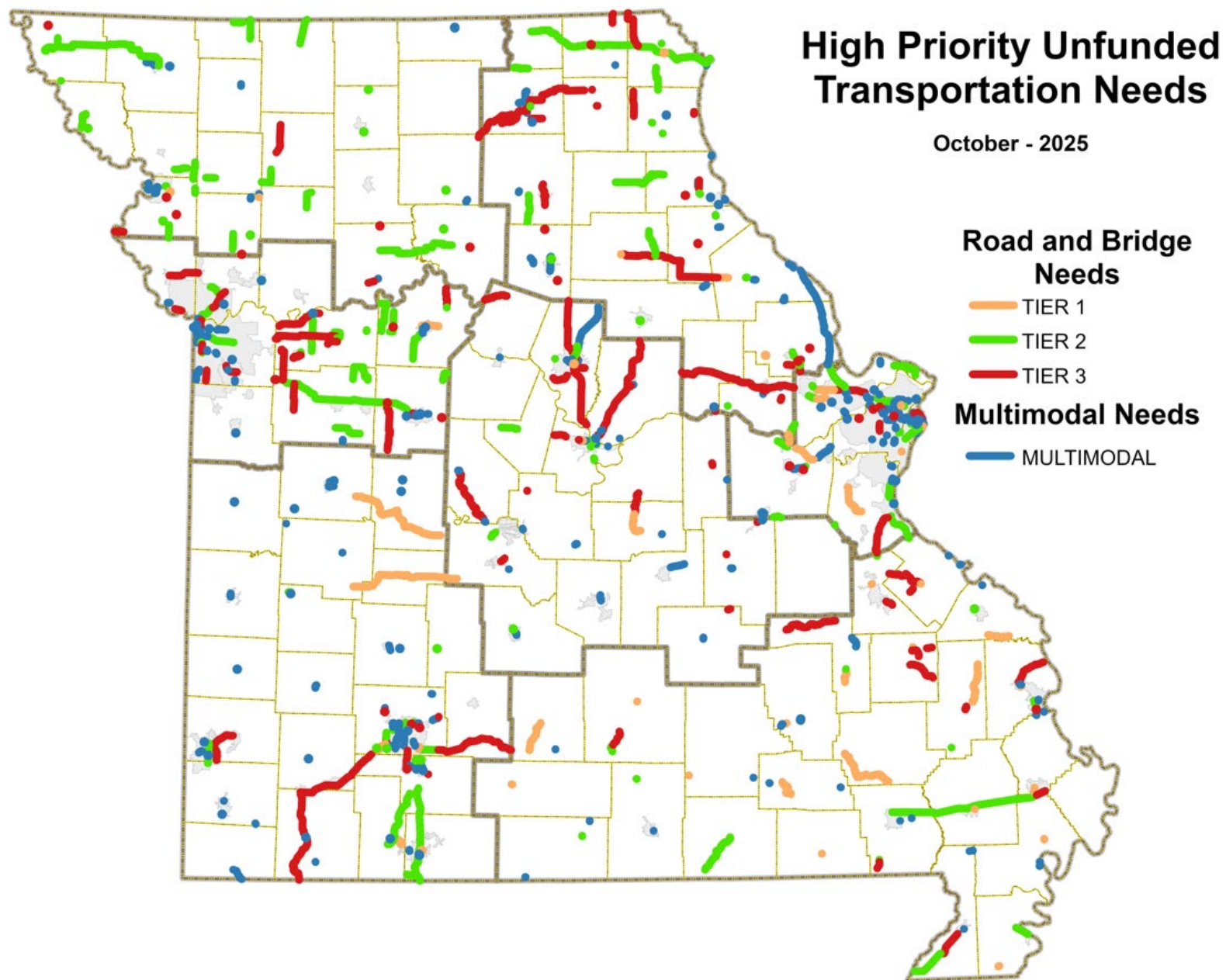
ST. LOUIS - MULTIMODAL



ST. LOUIS SUMMARY

TIER	IMPROVE BRIDGE CONDITIONS	IMPROVE ROAD CONDITIONS	INCREASE ECONOMIC GROWTH & IMPROVE SAFETY	MAJOR INTERSTATE RECONSTRUCTION	IMPROVE MULTIMODAL TRANSPORTATIO N OPTIONS	TOTAL
TIER 1	\$4,170	\$25,000	\$86,230	\$57,120		\$172,520
TIER 2	\$1,140	\$79,100	\$240,170	\$520,021		\$840,431
TIER 3	\$81,290	\$50,000	\$167,400	\$268,510		\$567,200
MULTIMODAL					\$337,003	\$337,003
TOTAL	\$86,600	\$154,100	\$493,800	\$845,651	\$337,003	\$1,917,154

THE NEEDS



To view the document and submit a comment:
modot.org/unfundedneeds

NEXT STEPS





LRTP/SFRP Updates



What is an LRTP?

Required by 23 CFR 450.216 1

2 Establishes Public Expectations

Guides MoDOT Investment 3

4 Identifies Future Needs

Our Goals



Stewardship

Maintain current assets and services we have today



Safe

Work to enhance safety of the transportation system for all users



Prosperous

Boost the economy through transportation investments



Reliable

Ensure efficiency and reliability in the transportation network



Connected

Improve mobility and connect communities through expanded multimodal choices



Innovative

Integrate emerging technologies to make our transportation system prepared and future-ready



Stewardship

Maintain current assets and services we have today



Provide a transportation system in a **state of good repair** through meeting or exceeding **established performance targets**.



Explore and secure stable funding to **support the current system and services** for each mode of transportation.



Maintain **system resilience** by adapting to **changing life cycle costs**, advancing **technologies**, an evolving **workforce**, and a growing **transportation demand**.



Enhance the transportation system by avoiding, **minimizing, or mitigating impacts to natural and cultural resources**.



Advance the Missouri State Freight and Rail Plan **Stewardship objectives**.



Safe

Work to enhance safety of the transportation system for all users



Invest in **system-wide** safety improvements to reduce fatalities and serious injuries for all modes.



Enhance transportation safety with a focus on the **Show-Me Zero – Missouri Strategic Highway Safety Plan** emphasis areas.



Enhance safety and security at **transportation mode connection points**.



Expand **partnerships** with safety advocates around the state to **identify and implement safety improvements**.



Reduce barriers to **access** and provide **protection** for **vulnerable road users**.



Advance the Missouri State Freight and Rail Plan **Safety objectives**.



Prosperous

Boost the economy through transportation investments



Increase partnership coordination with local communities, regional and metropolitan organizations, businesses, transportation service providers, and other sectors to identify what transportation projects can better **support local economies**.



Support projects that **provide economic benefit**.



Focus federal grants on transformational projects with **high economic impacts** which stimulate the local economy and **strengthen the competitiveness of Missouri's regions**.



Advance the Missouri State Freight and Rail Plan **Prosperous objectives**.



Reliable

Ensure efficiency and reliability in the transportation network



Take a **practical/life cycle approach** to highway system capacity expansion, given financial constraints.



Increase reliability of the transportation system in **bottleneck areas**.



Enhance **transportation infrastructure resilience** to **maintain the movement of people and goods** during **traffic disruptions**.



Provide **reliable and accessible** multimodal transportation **options for all users**.



Enhance **emergency and alternative routes**.



Advance the Missouri State Freight and Rail Plan **Reliable objectives**.



Connected

Improve mobility and connect communities through expanded multimodal choices



Provide an **accessible and connected** transportation system for **all users**.



Consider preservation and provision of **additional multimodal connectivity** during **project development**.



Expand and improve **multimodal transportation system** with options and connections throughout the state.



Advance the Missouri State Freight and Rail Plan **Connected objectives**.



Innovative

Integrate emerging technologies to make our transportation system prepared and future-ready



Explore **technology** and develop **business practices** that result in **lower life-cycle costs**.



Support **automated and connected vehicle technology** by advancing the **Connected and Automated Vehicle Action Plan**.



Understand and deploy innovative **work zone warning and protection devices**.



Identify and plan for **alternative funding sources** to recoup **gas tax revenue lost** from alternatively fueled vehicles.



Integrate **traffic management systems** and **vehicle detection systems** to monitor and **improve traffic congestion**.



Advance the Missouri State Freight and Rail Plan **Innovation objectives**.

Connecting the LRTP to Missouri's Unfunded Needs

The High-Priority Unfunded Needs list will:



Not be included in the **LRTP**



Provide **categories or buckets** for discussion in the **LRTP needs assessment**



Be used to **ensure** that the established **LRTP goals and objectives capture** those categories

We Want to Hear from *YOU*

Take the survey and share your thoughts



www.modot.org/lrtp-sfrp/get-involved