

# UNFUNDED NEEDS: PUBLIC MEETINGS

**Kansas City District**

## *Missouri* **HIGH-PRIORITY UNFUNDED NEEDS**



Oct. 2025



# FUNDING DISTRIBUTION

*Fiscal Year 2026 Amounts*

Total Distributed Construction Program Funds

\$1,252M

Safety

\$58M

Asset Management

\$887M

System Improvement

\$307M

Distributed based on:

- System size
- System usage
- Fatalities/serious injuries
- Population
- Employment

\*Does not include General Assembly Designated Funds



**HIGH-PRIORITY UNFUNDED ANNUAL TRANSPORTATION NEEDS**  
**\$1.1 billion**

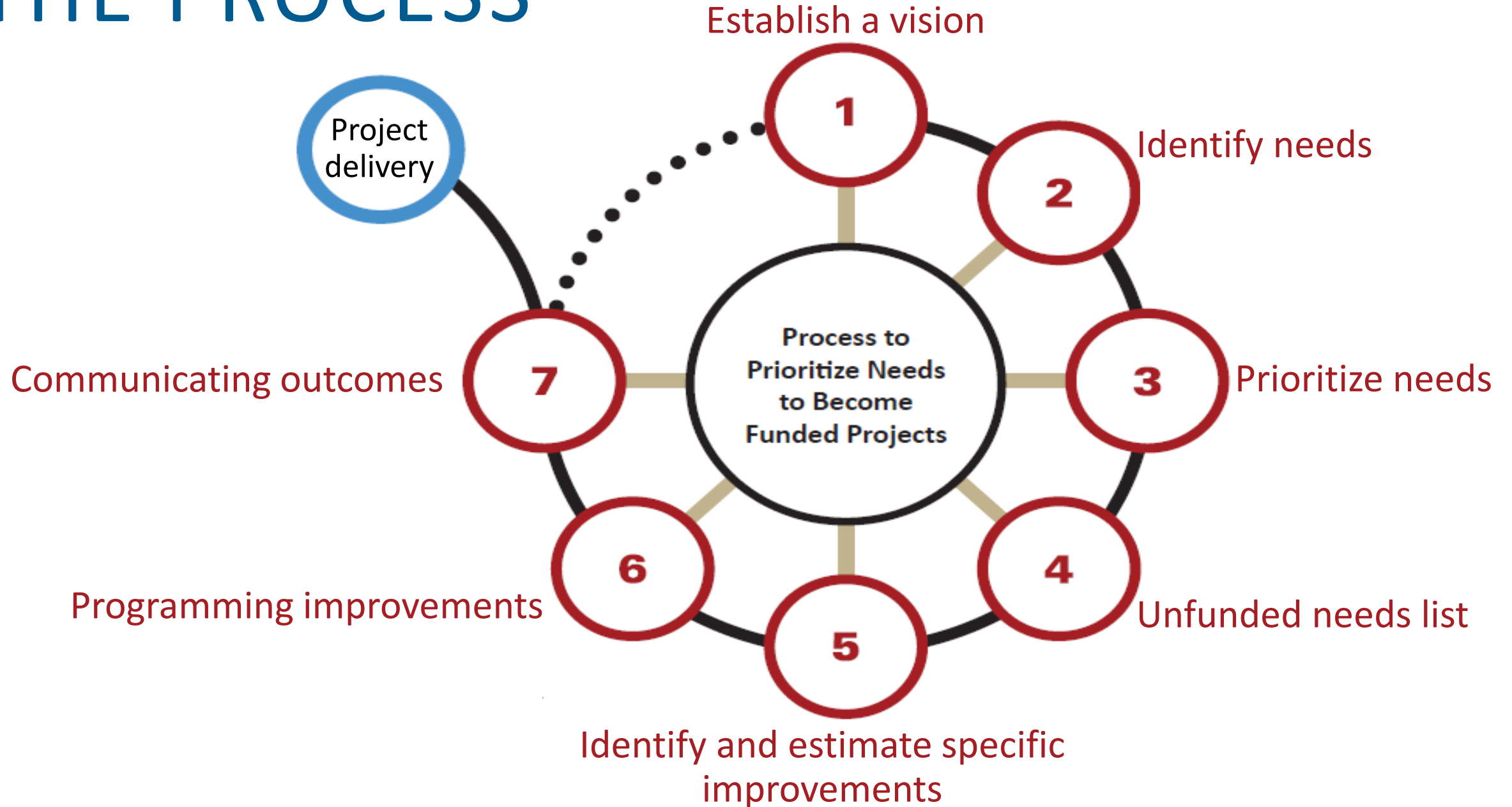


**THE NEEDS**

# THE OUTCOME

- \$4.7 billion of tiered road and bridge needs in new updated document
  - Three tiers
  - Tier one = could be accomplished in the current STIP horizon
- \$1 billion of multimodal needs

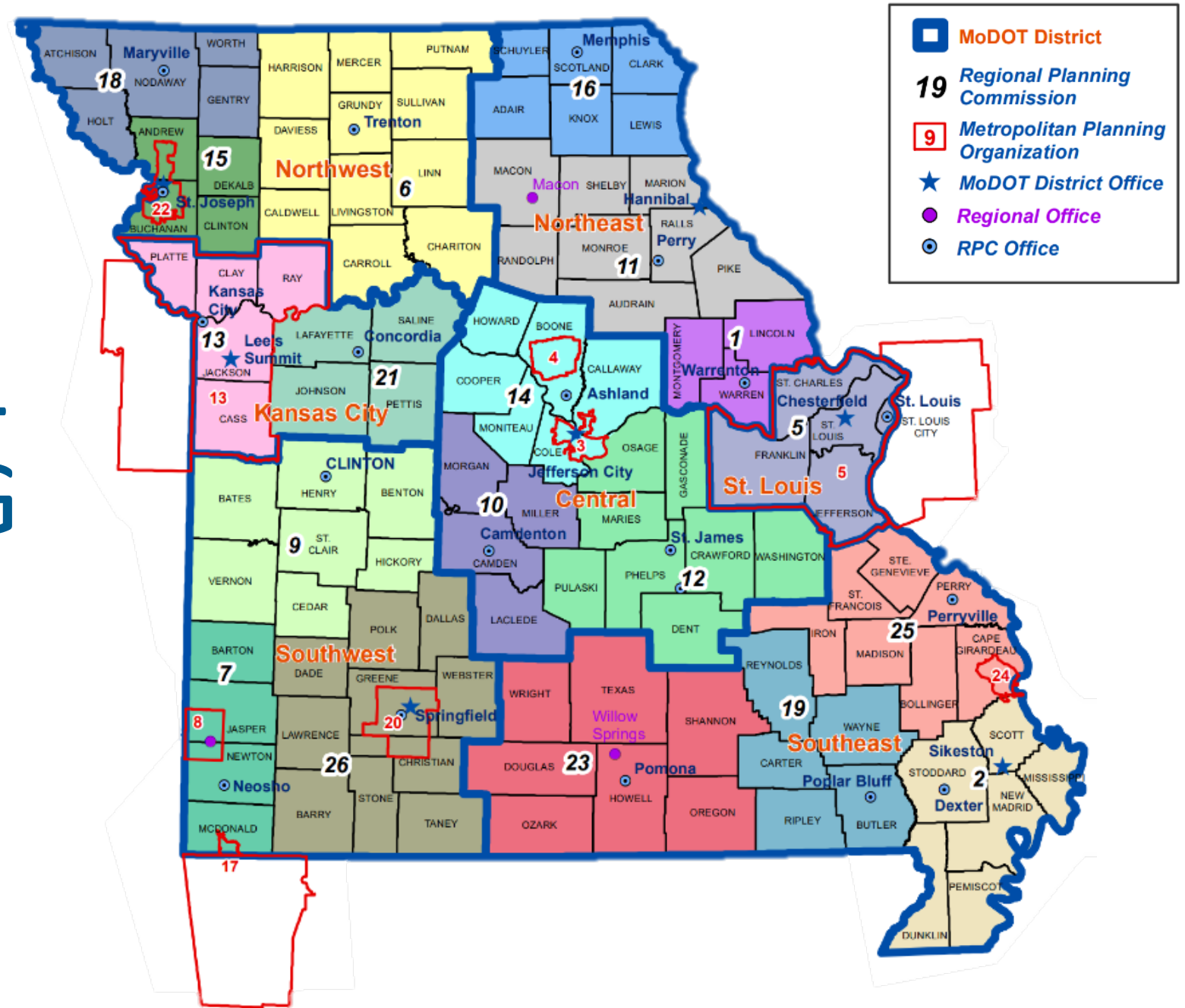
# THE PROCESS



# 3

**Prioritize needs** – MoDOT district offices work with MPOs and RPCs to annually prioritize regional needs, collectively. This requires multiple planning entities within a MoDOT district to work collectively to create priorities among all needs identified, regardless of location. Safety, traffic volume, asset condition data are used to help select the highest priorities within a MoDOT district boundary.

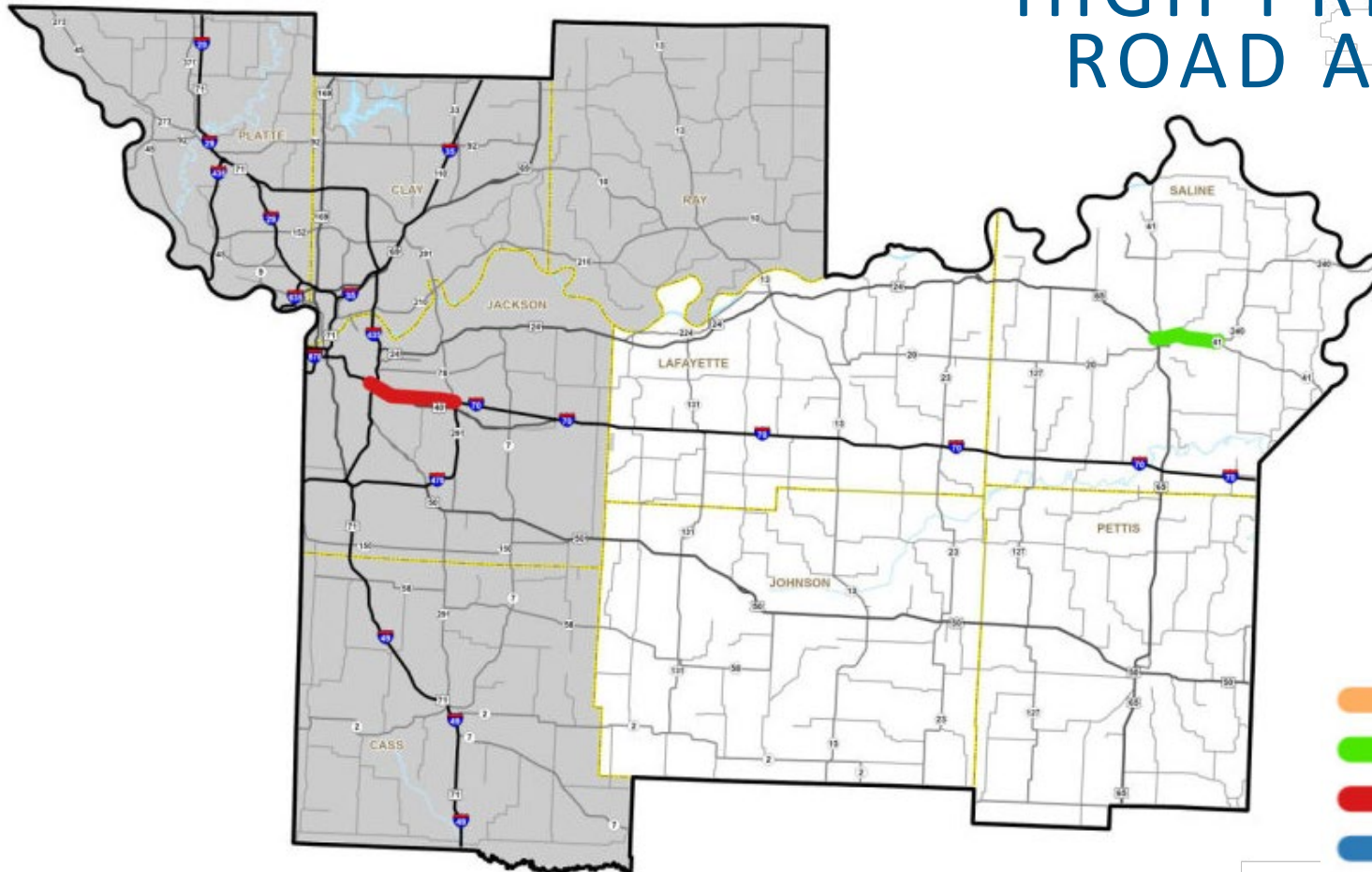
# REGIONAL PLANNING PARTNERS





# HIGH-PRIORITY UNFUNDED ROAD AND BRIDGE NEEDS

Rural Tier 1 - \$12 million  
Urban Tier 1 - \$100 million



- Improve Bridge Conditions
- Improve Road Conditions
- Increase Economic Growth and Improve Safety
- Major Interstate Construction

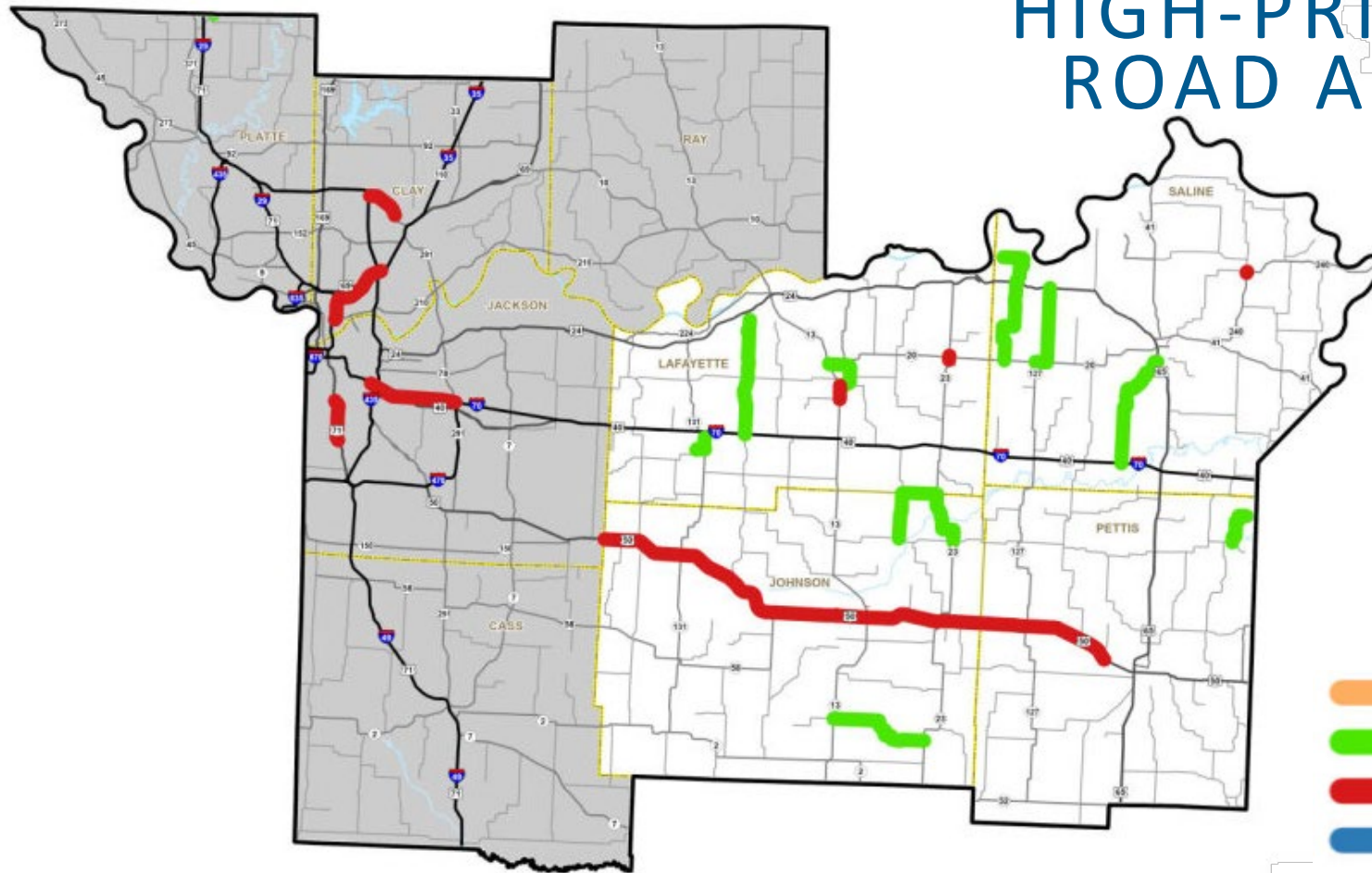
## KANSAS CITY - TIER 1





# HIGH-PRIORITY UNFUNDED ROAD AND BRIDGE NEEDS

Rural Tier 2 - \$51.1 million  
Urban Tier 2 - \$414 million

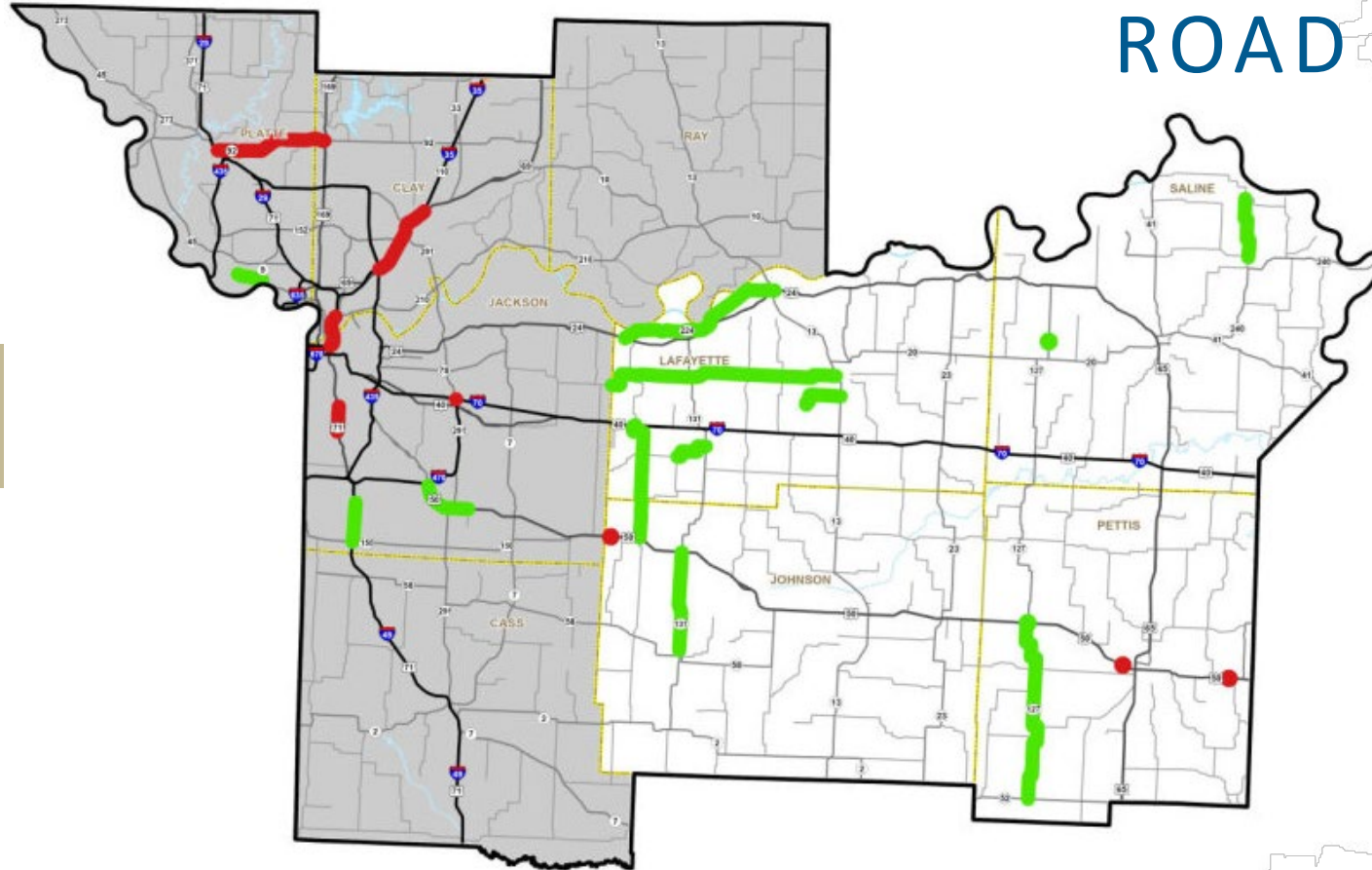


- Improve Bridge Conditions
- Improve Road Conditions
- Increase Economic Growth and Improve Safety
- Major Interstate Construction

## KANSAS CITY - TIER 2



# HIGH-PRIORITY UNFUNDED ROAD AND BRIDGE NEEDS

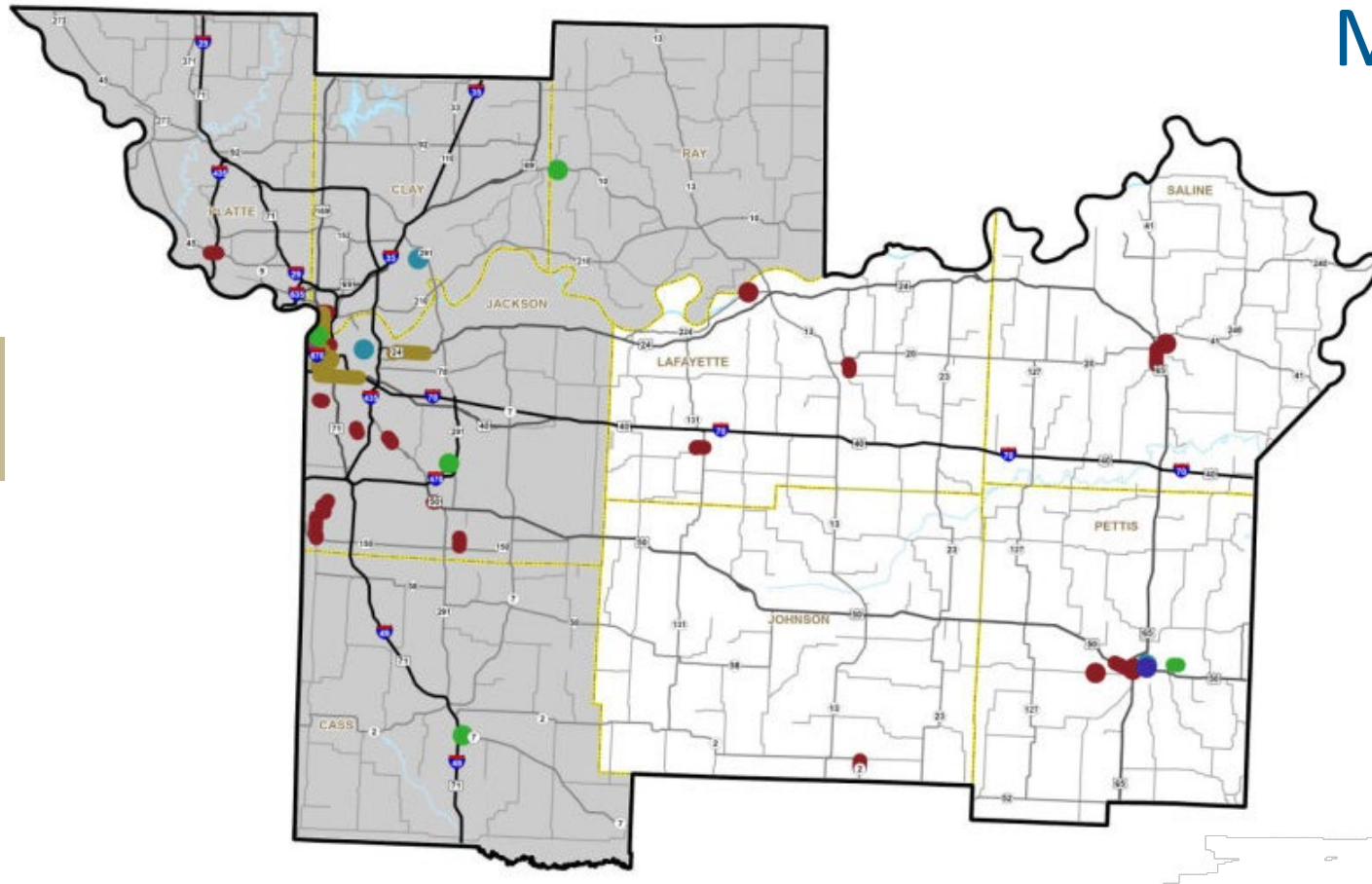


Rural Tier 3 - \$52 million  
Urban Tier 3 - \$419.6 million

- Improve Bridge Conditions
- Improve Road Conditions
- Increase Economic Growth and Improve Safety
- Major Interstate Construction

## KANSAS CITY - TIER 3

# HIGH-PRIORITY UNFUNDED MULTIMODAL NEEDS



Rural Multimodal - \$27.5 million  
Urban Multimodal - \$203.9 million

- ACTIVE TRANSPORTATION
- AVIATION
- FREIGHT
- RAIL
- TRANSIT
- WATERWAYS

## KANSAS CITY - MULTIMODAL

# KANSAS CITY SUMMARY

RURAL

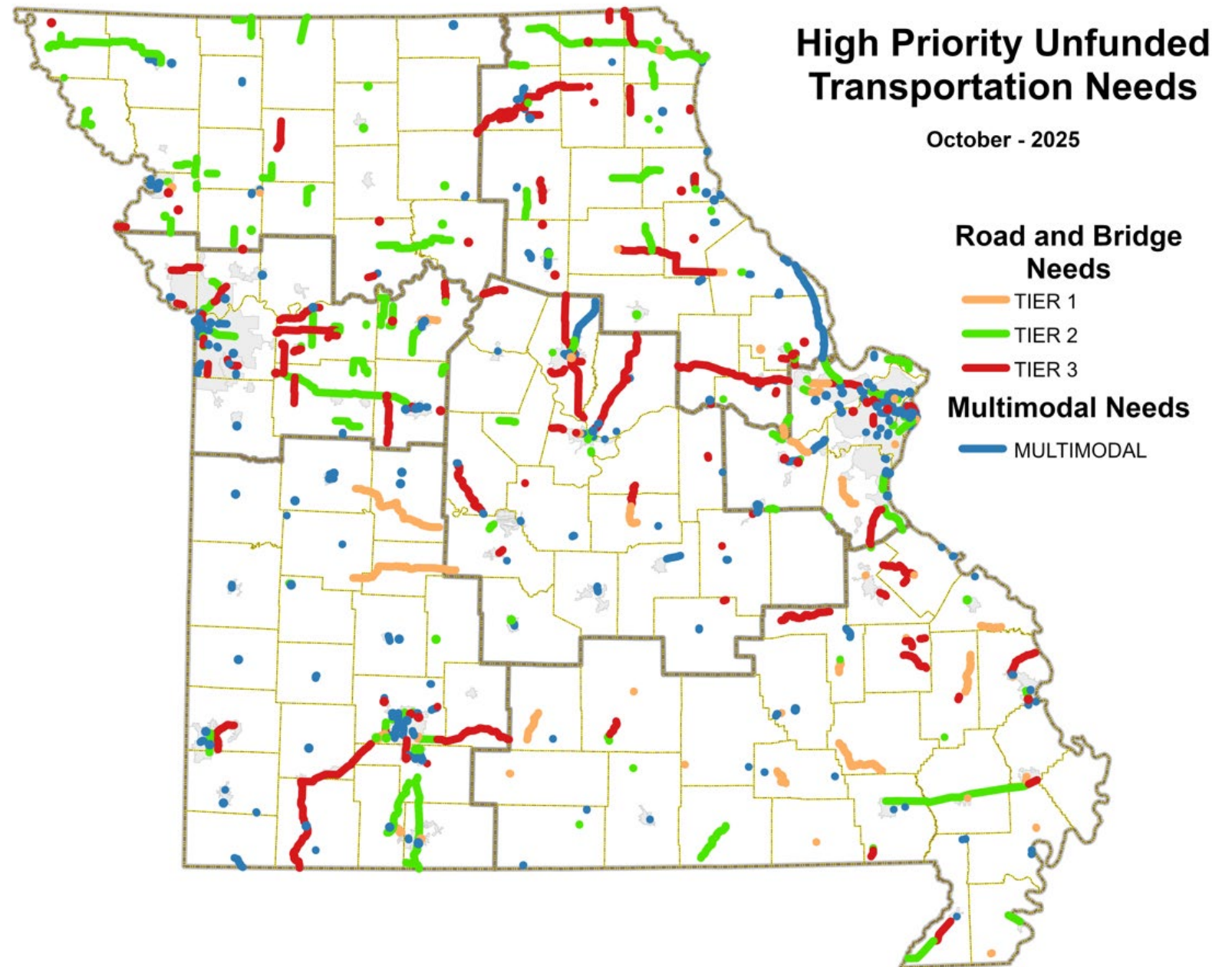
TIER	IMPROVE BRIDGE CONDITIONS	IMPROVE ROAD CONDITIONS	INCREASE ECONOMIC GROWTH & IMPROVE SAFETY	MAJOR INTERSTATE RECONSTRUCTION	IMPROVE MULTIMODAL TRANSPORTATIO N OPTIONS	TOTAL
TIER 1		\$12,000				\$12,000
TIER 2		\$38,328	\$12,745			\$51,073
TIER 3		\$47,331	\$4,640			\$51,971
MULTIMODAL					\$27,539	\$27,539
TOTAL	\$0	\$97,659	\$17,385	\$0	\$27,539	\$142,583

URBAN

TIER	IMPROVE BRIDGE CONDITIONS	IMPROVE ROAD CONDITIONS	INCREASE ECONOMIC GROWTH & IMPROVE SAFETY	MAJOR INTERSTATE RECONSTRUCTION	IMPROVE MULTIMODAL TRANSPORTATIO N OPTIONS	TOTAL
TIER 1			\$100,000			\$100,000
TIER 2			\$414,000			\$414,000
TIER 3		\$102,000	\$317,600			\$419,600
MULTIMODAL					\$203,872	\$203,872
TOTAL	\$0	\$102,000	\$831,600	\$0	\$203,872	\$1,137,472



# THE NEEDS



To view the document and submit a comment:  
[modot.org/unfundedneeds](https://modot.org/unfundedneeds)

---

NEXT STEPS







# LRTP/SFRP Updates



# What is an LRTP?

**Required by 23 CFR 450.216 1**

**2 Establishes Public Expectations**

**Guides MoDOT Investment 3**

**4 Identifies Future Needs**

# Our Goals



## Stewardship

Maintain current assets and services we have today



## Safe

Work to enhance safety of the transportation system for all users



## Prosperous

Boost the economy through transportation investments



## Reliable

Ensure efficiency and reliability in the transportation network



## Connected

Improve mobility and connect communities through expanded multimodal choices



## Innovative

Integrate emerging technologies to make our transportation system prepared and future-ready



# Stewardship

Maintain current assets and services we have today



Provide a transportation system in a **state of good repair** through meeting or exceeding **established performance targets**.



Explore and secure stable funding to **support the current system and services** for each mode of transportation.



Maintain **system resilience** by adapting to **changing life cycle costs**, advancing **technologies**, an evolving **workforce**, and a growing **transportation demand**.



Enhance the transportation system by avoiding, **minimizing, or mitigating impacts to natural and cultural resources**.



Advance the Missouri State Freight and Rail Plan **Stewardship objectives**.



# Safe

Work to enhance safety of the transportation system for all users



Invest in **system-wide** safety improvements to reduce fatalities and serious injuries for all modes.



Enhance transportation safety with a focus on the **Show-Me Zero – Missouri Strategic Highway Safety Plan** emphasis areas.



Enhance safety and security at **transportation mode connection points**.



Expand **partnerships** with safety advocates around the state to **identify and implement safety improvements**.



Reduce barriers to **access** and provide **protection** for **vulnerable road users**.



Advance the Missouri State Freight and Rail Plan **Safety objectives**.





# Prosperous

Boost the economy through transportation investments



**Increase partnership coordination** with local communities, regional and metropolitan organizations, businesses, transportation service providers, and other sectors to identify what transportation projects can better **support local economies**.



**Support** projects that **provide economic benefit**.



Focus federal grants on transformational projects with **high economic impacts** which stimulate the local economy and **strengthen the competitiveness of Missouri's regions**.



Advance the Missouri State Freight and Rail Plan **Prosperous objectives**.





# Reliable

Ensure efficiency and reliability in the transportation network



Take a **practical/life cycle approach** to highway system capacity expansion, given financial constraints.



**Increase reliability** of the transportation system in **bottleneck areas**.



Enhance **transportation infrastructure resilience** to **maintain the movement of people and goods** during **traffic disruptions**.



Provide **reliable and accessible** multimodal transportation **options for all users**.



Enhance **emergency and alternative routes**.



Advance the Missouri State Freight and Rail Plan **Reliable objectives**.



# Connected

Improve mobility and connect communities through expanded multimodal choices



Provide an **accessible and connected** transportation system for **all users**.



Consider preservation and provision of **additional multimodal connectivity** during **project development**.



Expand and improve **multimodal transportation system** with options and connections throughout the state.



Advance the Missouri State Freight and Rail Plan **Connected objectives**.



# Innovative

Integrate emerging technologies to make our transportation system prepared and future-ready



Explore **technology** and develop **business practices** that result in **lower life-cycle costs**.



Support **automated and connected vehicle technology** by advancing the **Connected and Automated Vehicle Action Plan**.



Understand and deploy innovative **work zone warning and protection devices**.



Identify and plan for **alternative funding sources** to recoup **gas tax revenue lost** from alternatively fueled vehicles.



Integrate **traffic management systems** and **vehicle detection systems** to monitor and **improve traffic congestion**.



Advance the Missouri State Freight and Rail Plan **Innovation objectives**.

# Connecting the LRTP to Missouri's Unfunded Needs

The High-Priority Unfunded Needs list will:



**Not** be included in the **LRTP**



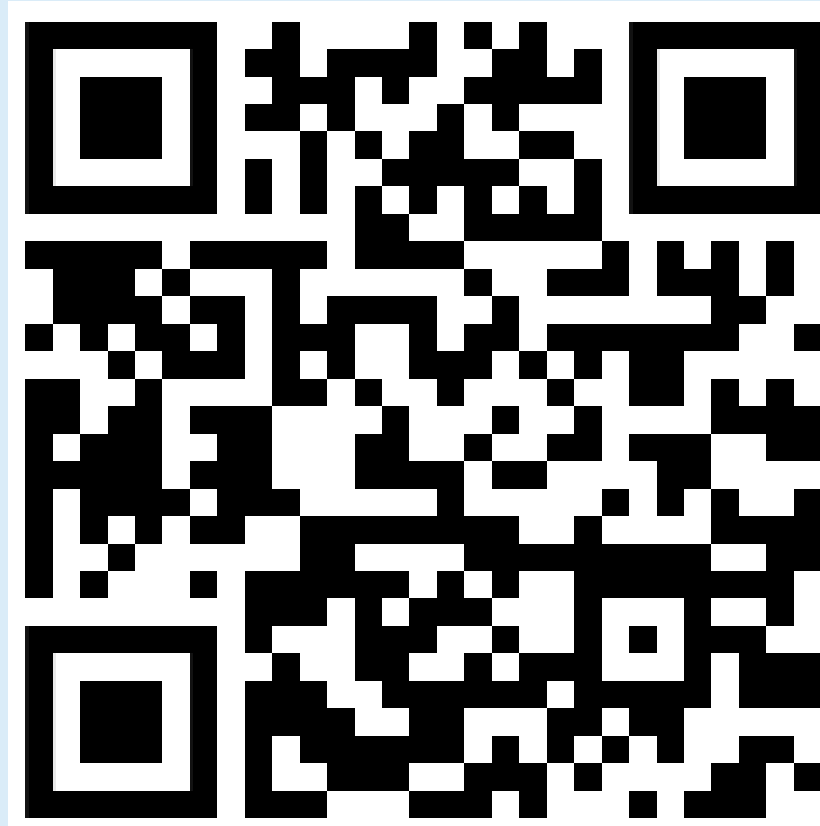
Provide **categories or buckets** for discussion in the **LRTP needs assessment**



Be used to **ensure** that the established **LRTP goals and objectives capture** those categories

# We Want to Hear from *YOU*

*Take the survey and share your thoughts*



**[www.modot.org/lrtp-sfrp/get-involved](http://www.modot.org/lrtp-sfrp/get-involved)**