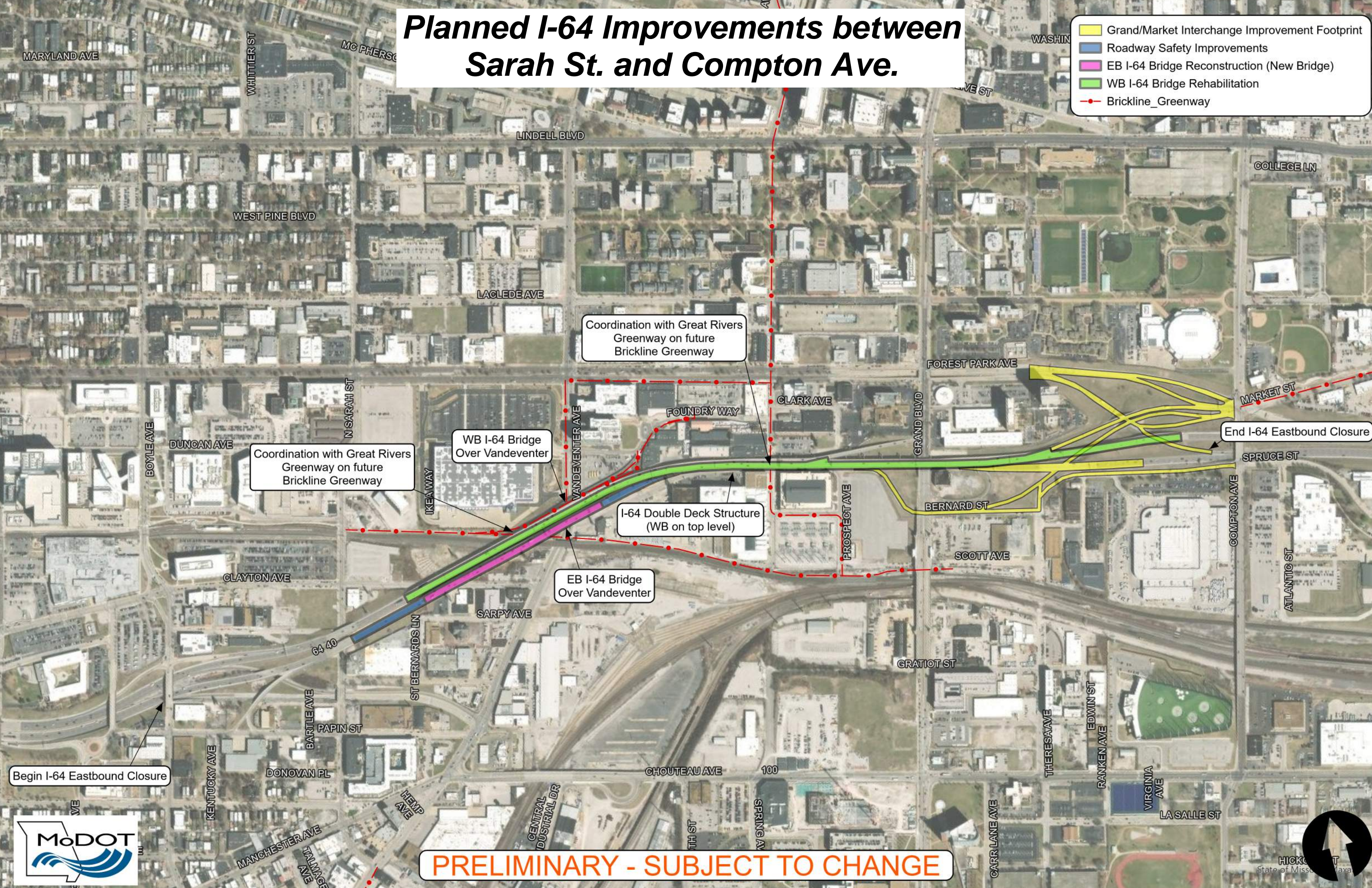


Planned I-64 Improvements between Sarah St. and Compton Ave.

- Grand/Market Interchange Improvement Footprint
- Roadway Safety Improvements
- EB I-64 Bridge Reconstruction (New Bridge)
- WB I-64 Bridge Rehabilitation
- Brickline_Greenway



Begin I-64 Eastbound Closure

Coordination with Great Rivers Greenway on future Brickline Greenway

Coordination with Great Rivers Greenway on future Brickline Greenway

WB I-64 Bridge Over Vandeventer

I-64 Double Deck Structure (WB on top level)

EB I-64 Bridge Over Vandeventer

End I-64 Eastbound Closure

PRELIMINARY - SUBJECT TO CHANGE

