

IMPROVE I-70

Industry Meeting

May 1, 2025





Funding of I-70 at \$2.8 Billion
May 31, 2023



INFRA/MEGA Grant

- **Awarded \$93 million:**
 - Truck Parking
 - Outer Roads
 - ITS
 - Data Driven Safety
 - Smart Work Zone
 - Speed Management
 - Wrong Way Technology
 - Wildlife Crossings
 - Solar
- Grant agreement is complete.
- Majority of funds have been allocated.

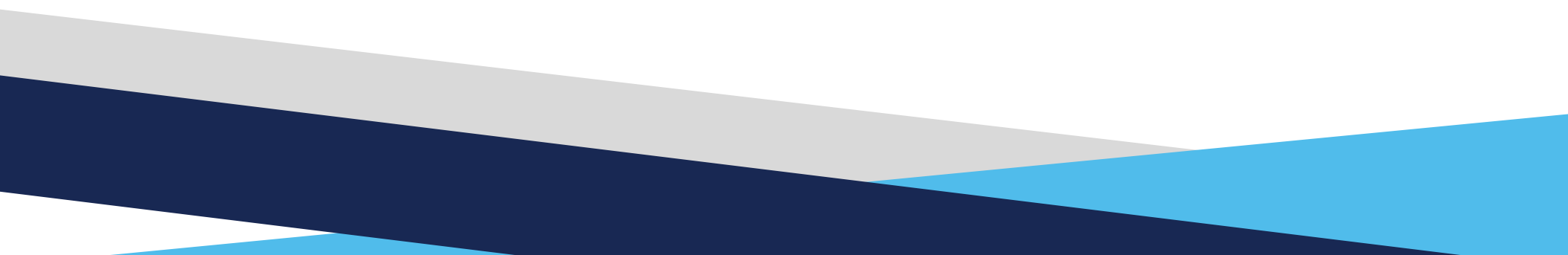
Improve I-70 - Final Schedule

Project	Limits	Miles	GR Funds	STIP	Total	Procurement Method	Issue RFP/ Letting Process	Project Award	Completion	Duration
1	Columbia to Kingdom City	20	\$297m	\$129m	\$426m	DB	SEP 2023	FEB 2024	DEC 2027	46 Months
2	Warrenton to Wentzville	19	\$434m	\$200m	\$634m	DB	JUN 2024	NOV 2024	DEC 2028	49 Months
3	Blue Springs to Odessa	18-28	\$324m	\$43m	\$367m	DB	DEC 2024	May 2025	DEC 2028	43 Months
4	Rocheport to Columbia	14	\$399m	\$41m	\$440m	DB	JUN 2025	NOV 2025	DEC 2029	49 Months
5	Boonville to Rocheport	13				DBB	JAN 2026 Letting	FEB 2026	DEC 2027	22 Months
TP	Truck Parking	0	\$0	\$0	\$25m	DB	JAN 2026	APR 2026	APR 2028	48 Months
6	Kingdom City to Warrenton	44	\$561m	\$22m	\$583m	DB	JUN 2026	NOV 2026	DEC 2030	49 Months
7	Odessa to Concordia	10-20				DBB	JUN 2027	JUL 2027	DEC 2029	29 Months
8	Concordia to Boonville	42	\$525m	\$16m	\$541m	DB	JAN 2027	MAY 2027	DEC 2030	43 Months

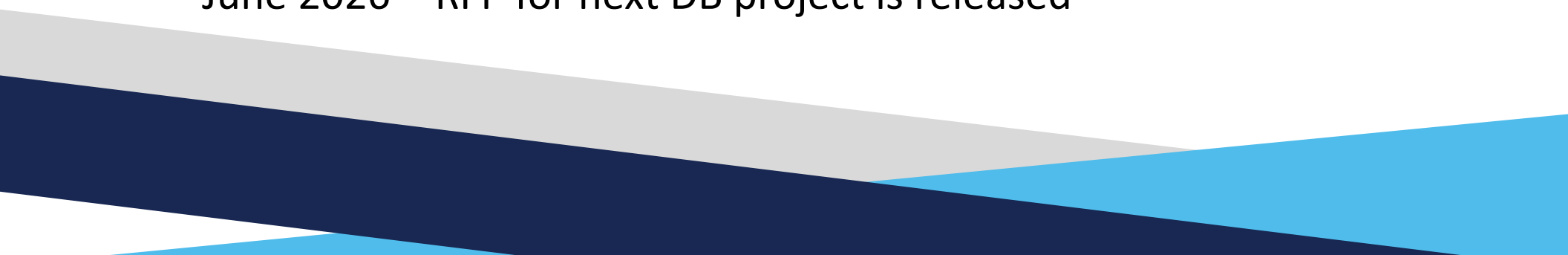
UPCOMING SOLICITATIONS

- Solar & NEVI
 - Solar on ROW funded by INFRA
 - NEVI Implementation
 - July 7th – Issue RFQ
 - July 29th – Solicitation Due
 - Early August Selection

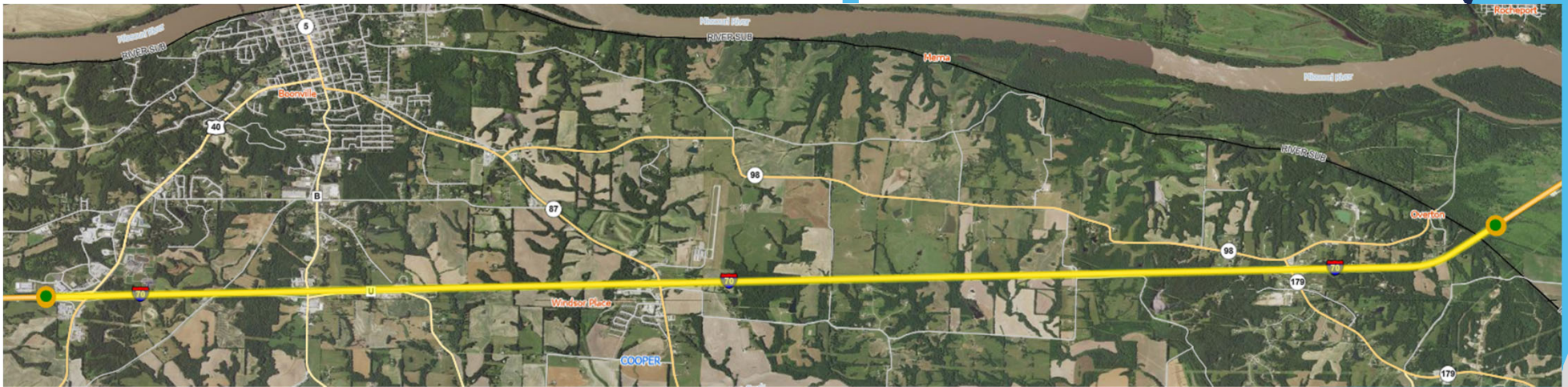
UPCOMING SOLICITATIONS

- Future Bid-Build
 - Mainline Expansion – West Side
 - Length TBD – Limits to be announced May 8th on the Industry Site
 - July 7th – Issue RFQ
 - July 29th – Solicitation Due
 - Early August Selection
 - Early 2027 Letting
- 

UPCOMING SOLICITATIONS

- Rural Expansion Design-Builds – Projects 6 & 8
 - 1 Owner-Engineer for both projects
 - August 19th – Issue RFQ
 - August 26th – Industry Q&A Day – Virtual Option or Jeff City
 - September 16th – Solicitation Due
 - Early October Selection
 - June 2026 – RFP for next DB project is released
- 

Boonville to Rocheport



- 13 mile rebuild and expansion in Cooper County
- Includes 2 bridge widenings over Union Pacific RR
- City of Boonville Cost Share – Roundabout at Route B & Americana
- Contractor engagement outreach

PROJECT #5 UPDATE

Boonville to Rocheport

Concrete Option	Base	Subgrade
<ul style="list-style-type: none">• 11" JPCP• 15' joints• 1 ½" dowels• 13.5' widened slab	12" Rock Base	Chemical or mechanically modified subgrade.
Asphalt Option	Base	Subgrade
<ul style="list-style-type: none">• 2" SP125BSM w/PG 76-22 over• 2" SP125B w/PG 76-22 over• 9.5" SP250C w/PG 64-22	18" Rock Base	Chemical or mechanically modified subgrade.
<ul style="list-style-type: none">• 2" SP125BSM w/PG 76-22 over• 2" SP125B w/PG 76-22 over• 10.5" SP250C w/PG 64-22	12" Rock Base	Chemical or mechanically modified subgrade.

PROJECT #4 UPDATE

Rochepoint to Columbia



Contract Budget: \$425m
Stipend: \$1,250,000

PROJECT #4 GOALS

Rocheport to Columbia

1. Deliver the project by December 31, 2029 within the program budget.
2. Provide an additional lane of travel in each direction on I-70 from Rocheport to Columbia.
3. Modernize I-70 while improving pavement, bridges, and interchanges to provide better traffic flow and movement of freight.

PROJECT #4 GOALS

Rochepoint to Columbia

4. Minimize construction impacts with a focus on work zone safety, communication, and construction staging while maintaining mobility.
5. Provide expanded employment opportunities while developing and using a diverse workforce.

PROJECT #4 Schedule

Rocheport to Columbia

- 5/1/2025 – Request for Qualifications
- 5/29/2025 – Statement of Qualifications Due
- 6/5/2024 – Shortlisted Teams
- 6/9/2025 – Issue Request for Proposals
- 6/11/2025 – Kick Off Meeting
- 6/23-10/23/2025 – Technical Discussions
- 11/14/2025 – Final Proposal Submittal
- 12/3/2025 – Selection of Apparent Best Value
- 12/31/2029 – Project Completion

DBE Goals

- DBE Goals
 - 10% Professional Services
 - 7% Construction
 - 3 OJT



Draft ITP – Scoring

- Project Definition – 70 Points
- Maintenance of Traffic – 25 Points
- Workforce Development – 5 Points
- Traffic/Safety Modeling
 - Required at interchanges with modifications

Configuration Requirements

- The Contractor shall construct a third lane in each direction on I-70 between mile marker 115.6 and mile marker 128, and improve all mainline and impacted ramp pavement within the Project limits.
- The Contractor shall improve the Route 163 and Route 763 interchanges to reduce mainline weaving.
- The Contractor shall provide an outer road connection across Perche Creek.

Configuration Requirements - Route 163 and Route 763



Configuration Requirements - Perche Creek



Configuration Requirements

- Contractor shall perform work on all bridges in accordance with Book 2 Section 15.
- All work is to be constructed within the Right of Way shown in Book 4, except for additional Right of Way or Permanent Easements as allowed in Book 2 Section 8.
- Access to all properties must be maintained at all times.

Request for Qualifications

- Submitter Experience (60 Points)
 - Executive Summary
 - 3 Reference Projects maximum
- Key Personnel (40 Points)
 - Project Manager
 - Quality Manager
 - Design Manager
 - Maintenance of Traffic Manager

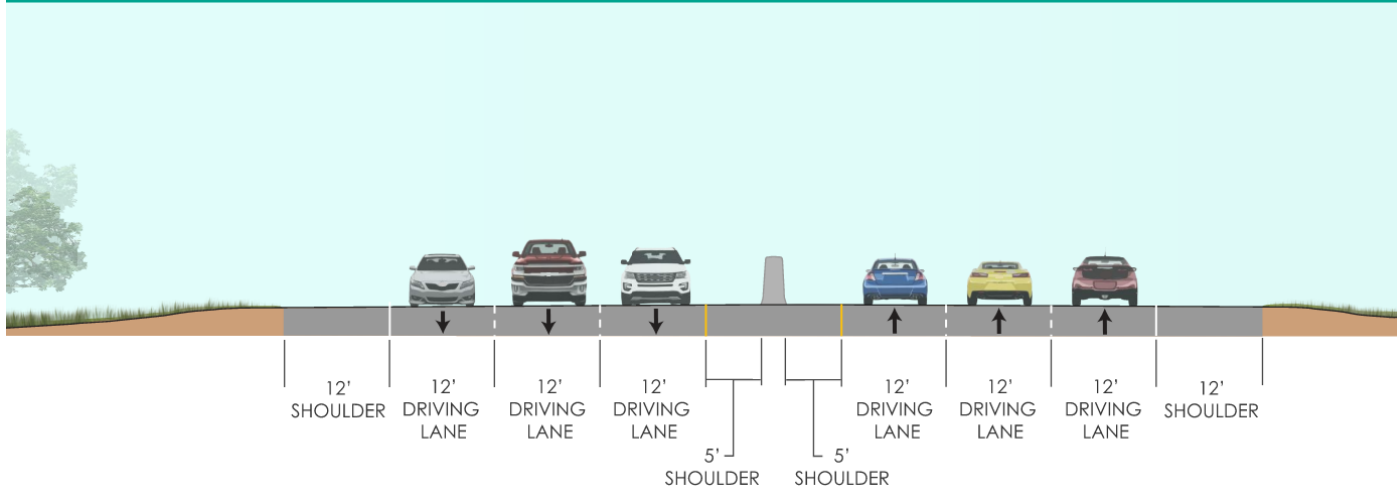
Ineligible Firms

- The following firms are assisting MoDOT with project procurement and are ineligible to compete:
 - CDM Smith
 - Gannett Fleming TranSystems
 - TREKK Design Group

I-70 Typical Section

- Conceptual Design
- Shoulder Width Design Exception
12' Outside and 5' Median Shoulder

Interstate 70: Base Concept Typical Section



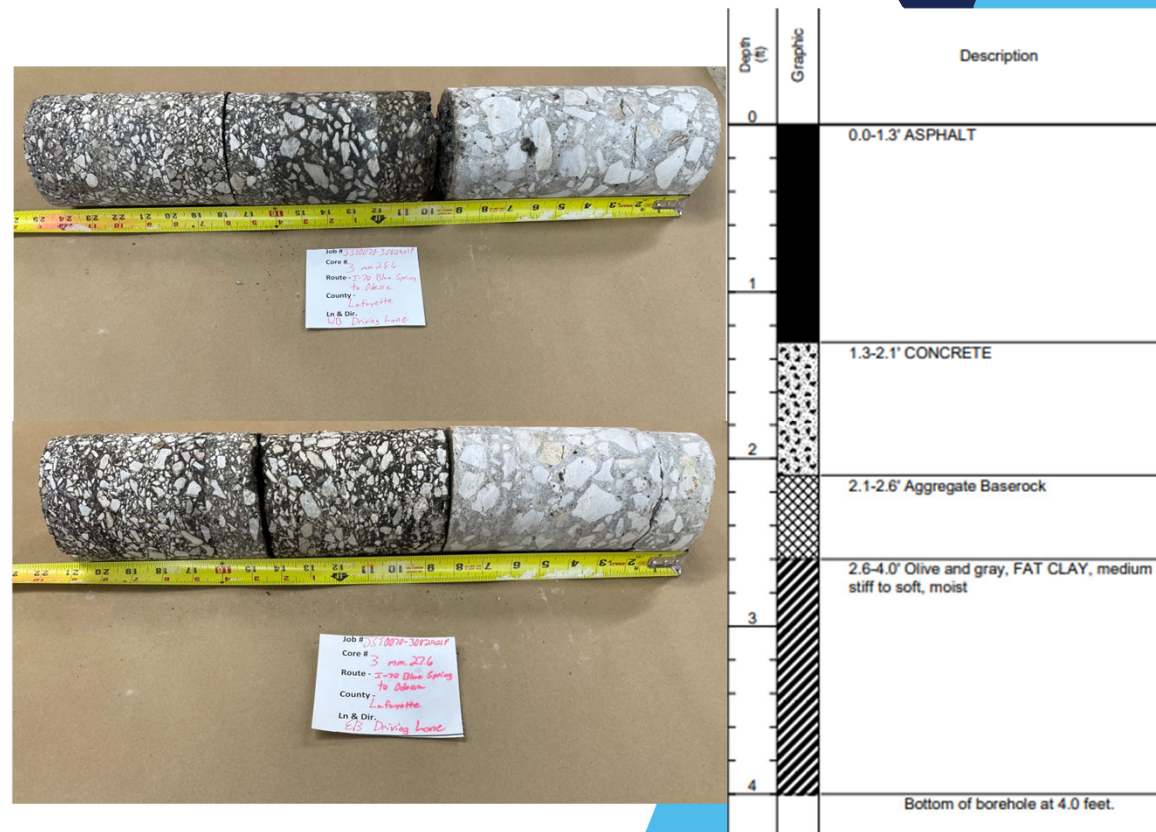
I-70 Bridges

- 16 Bridges
 - 9 Mainline Bridges
 - 2 Water Crossings (Perche Creek)
 - 7 Overhead Bridges
 - 1 Pedestrian (Providence Rd.)
 - 1 COLT Railroad/Trail
- Hydraulic Models



Pavement Condition

- Pavement Cores
- Dynamic Cone Penetration (DCP)
- 4-19 Inches Asphalt over Original Concrete
- Subgrade – cohesive soils, fat clays



Pavement Type Selection

Location	New Pavement Options		
	Base Type	HMA Design	PCCP Design
I-70 Phase 4 (Rocheport to Columbia)	18" Rock Base over modified subgrade	<u>14.5" HMA</u> 2" SP125BSM w/ PG 76-22 Over 2" SP125B w/ PG 76-22 Over 10.5" SP250C w/ PG 64-22	<u>11" JPCP Widened Slab</u> 15 ft. joint spacing, 1.5" dowels
	12" Rock Base over modified subgrade	<u>15" HMA</u> 2" SP125BSM w/ PG 76-22 Over 2" SP125B w/ PG 76-22 Over 11.5" SP250C w/ PG 64-22	<u>11" JPCP Widened Slab</u> 15 ft. joint spacing, 1.5" dowels
	6" Type 7 Aggregate Base Over Rubblized 8" PCCP	<u>15" HMA</u> 2" SP125BSM w/ PG 76-22 Over 2" SP125B w/ PG 76-22 Over 11.5" SP250C w/ PG 64-22	<u>11" JPCP Widened Slab</u> 15 ft. joint spacing, 1.5" dowels
	Temporary Pavement (1-year design life) (Rebuild Shoulders)		
	18" Rock base over modified subgrade	<u>9" HMA</u> 4" SP125C w/ PG 76-22 over 5" SP250C w/ PG 64-22	<u>8.5" PCCP</u> 15' joints; 1 ¼" dowels, and widened slab
	12" Rock Base over modified subgrade	<u>9.5" HMA</u> 4" SP125C w/ PG 76-22 over 5.5" SP250C w/ PG 64-22	<u>8.5" PCCP</u> 15' joints; 1 ¼" dowels, and widened slab

Challenges

- Utility Coordination – Lumen
- COLT Railroad
- Environmental Clearances
- Right of Way Acquisitions
- Construction Staging/Incident Management
- Coordination with adjacent projects



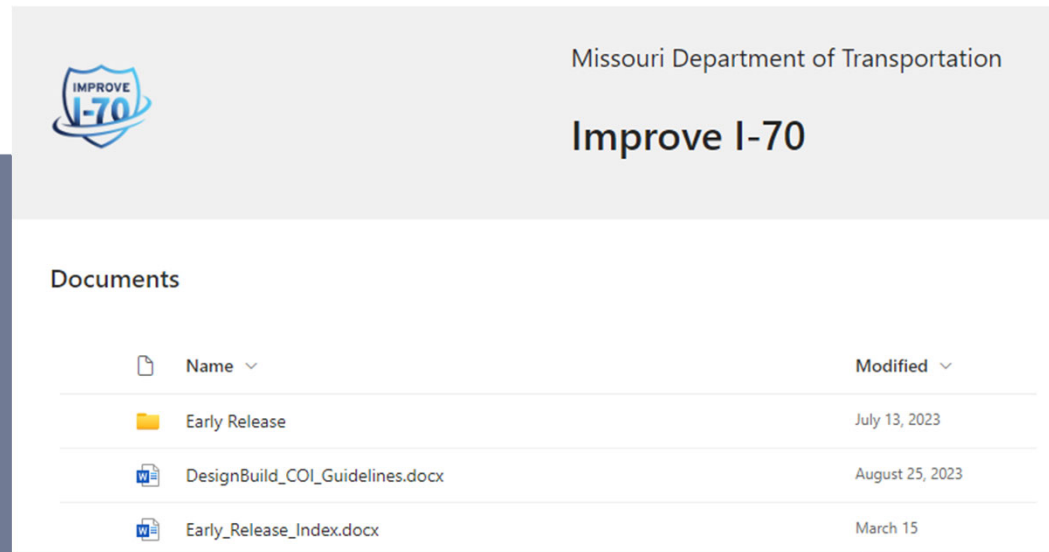
Information Release

- Pavement Type Selection and Core Report
- Access Justification Report (AJR)
- SIU 4 EIS Re-evaluation
- Survey and Topo Files
- ROW
- Existing alignment
- Draft ITP
- Draft Configuration Requirements



Industry SharePoint

- Improve I-70 Program Early Release
 - Request access via email to ImproveI70@modot.mo.gov
- Email notices go out when new information is being posted



Contact Information

- Project #4 Questions:
 - Spencer Robinson: 573-508-4656
 - Spencer.Robinson@modot.mo.gov





Questions?

- Improve I-70 Public Webpage
 - <https://www.modot.org/improvei70/home>

Networking

- Red Tag – Contractor
- Green Tag – Consultant
- Blue Tag – Producer / Supplier
- Orange Tag – DBE
- Purple Tag – Other

