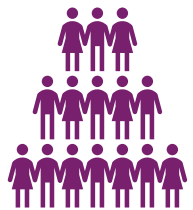




MoDOT UPDATE

TOM BLAIR | DISTRICT ENGINEER
ST. LOUIS DISTRICT

WELCOME TO ST. LOUIS



2.5 Million



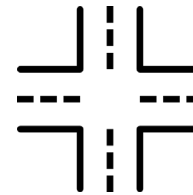
Roadways

6,000 lane miles and 26% of all vehicle miles traveled



Bridges

1,167 non-major bridges
55 major bridges (> 1,000 feet)



Signalized Traffic Intersections

1,070 locations



Highway Tunnel

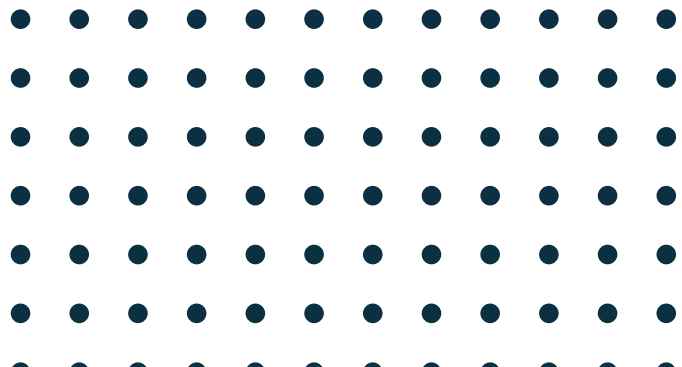
1,420 feet, first in Missouri



Lambert International Airport

16 Million passengers annual

MoDOT FOCUS AREAS



- Deliver the program
- Restore operations
- Work safely for ourselves and the traveling public
- Focus on customers

DELIVER THE PROGRAM: *2026-2030 STIP*

- One of Missouri's largest programs to date
 - \$13.3 billion
 - \$9.5 billion in road and bridge construction
 - \$1.1 billion in multimodal
 - 1,200+ projects

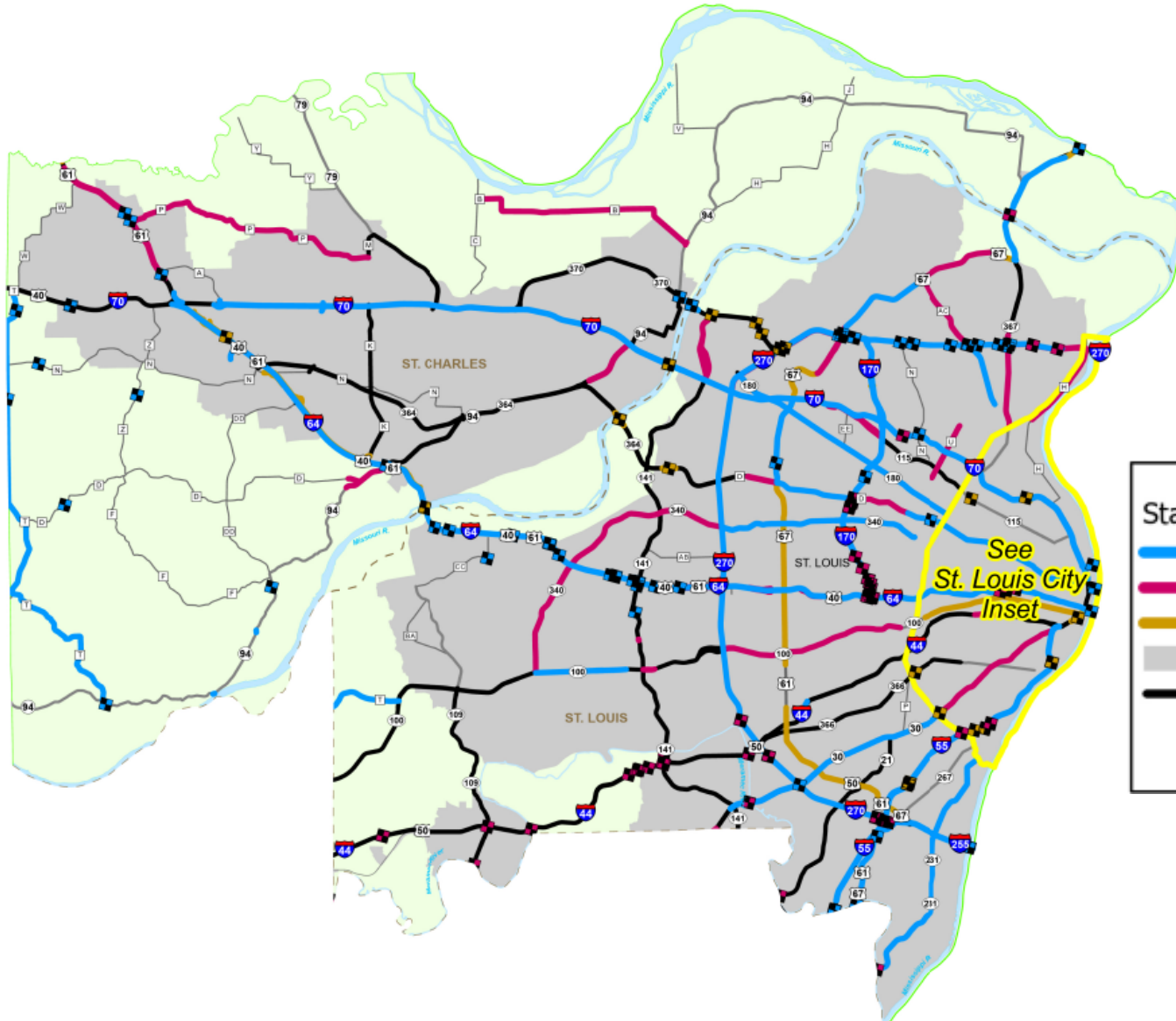


ST. LOUIS HIGHLIGHTS

- **Total Projects:** 207 valued at \$1.4 B
- **Bridge Work:** 71 bridge projects affecting a total of 377 structures
- **Pavement Improvements:** 58 projects, addressing 553 centerline miles and 2,155 lane miles
- **Structural Sign Replacements:** 125 centerline miles (678 lane miles)



ST. LOUIS DISTRICT STIP



State Fiscal Year

2026

2027

2028

Urban Areas

Major Routes

(July 1 - June 30)

Bridge

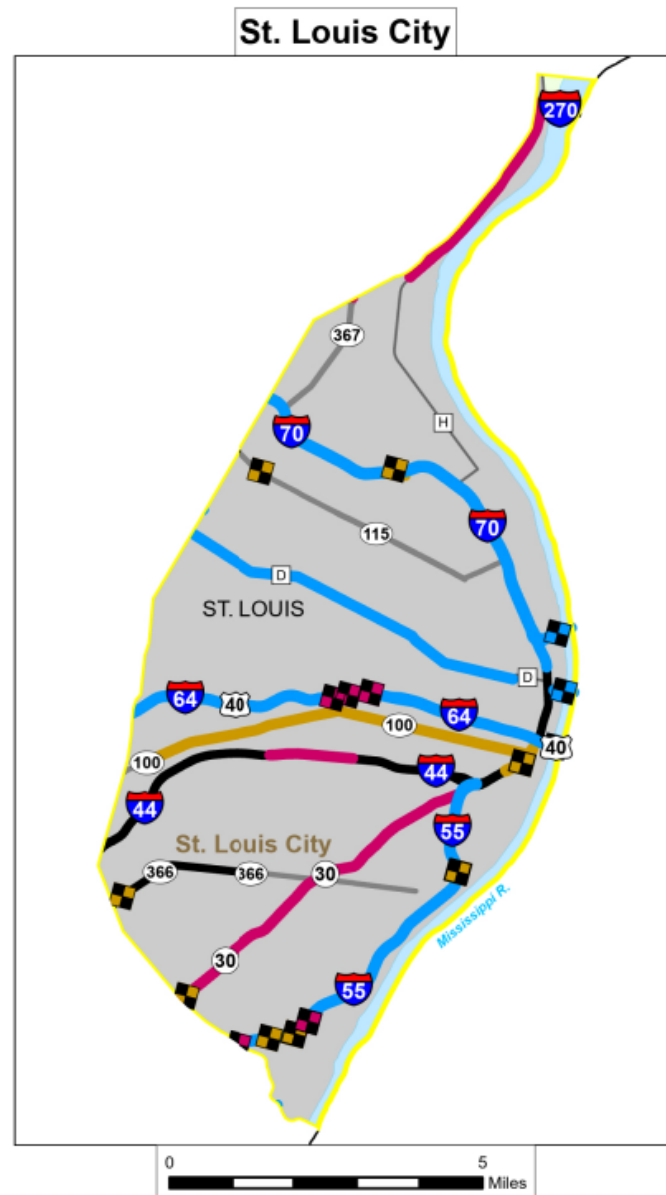
Bridge

Bridge

East West Gateway Council of Governments

Note: Bridge projects are displayed first. Other project overlaps will follow the order shown in the legend.

ST. LOUIS DISTRICT STIP



State Fiscal Year

2026

2027

2028

Urban Areas

Major Routes

(July 1 - June 30)

Bridge

Bridge

Bridge

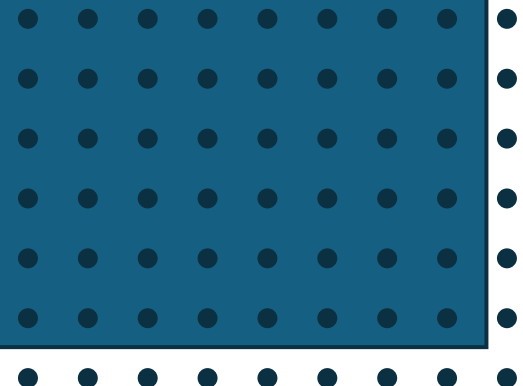
East West Gateway Council of Governments

Note: Bridge projects are displayed first. Other project overlaps will follow the order shown in the legend.

LEGISLATIVELY DESIGNATED & FUNDED INITIATIVES

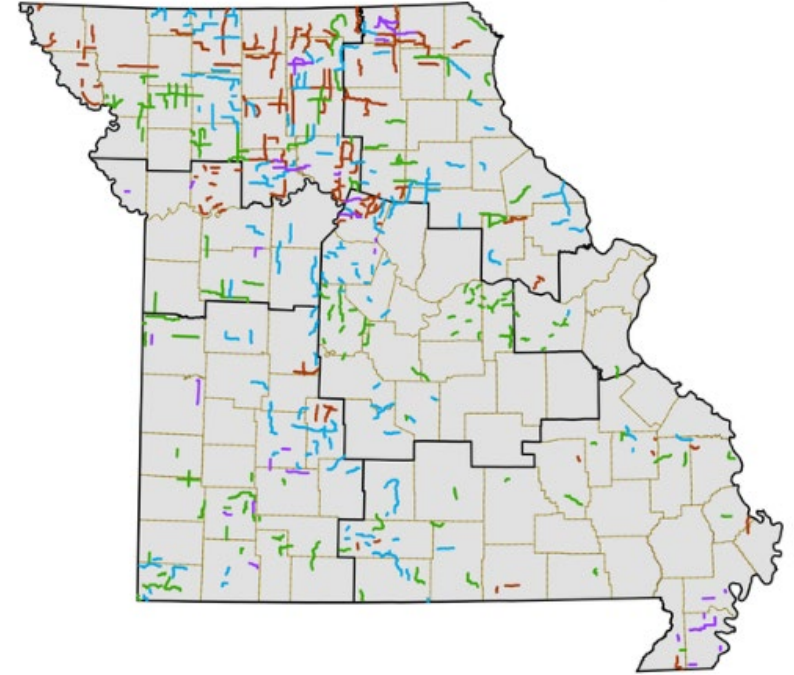
\$2.6 Billion in General Revenue:

- Remaining I-70 - **\$1.8 billion**
- I-44 - **\$577.5 million**
- Rural Routes - **\$20 million**
- Multimodal projects - **\$20 million**
- Off-system projects - **\$22 million**
- Other projects - **\$28 million**



GOVERNOR'S RURAL ROUTES

- \$100 million for FY 2023
 - 1,700 lane miles
- \$100 million for FY 2024
 - 1,900 lane miles
- \$100 million for FY 2025
 - 2,100 lane miles
- \$20 million for FY 2026
 - 430 lane miles



IMPROVE I-70



SEPTEMBER 2025

Totals listed are STIP funds unless otherwise noted

Planned Capacity Improvements Blue Springs to Wentzville

Under Construction - \$1.06 billion

Funded Future Improvements - \$2.2 billion

PROGRAM SCHEDULE: 2024-2030

Truck Parking Multiple Locations Statewide

Beginning in the fall of 2025, a corridor-wide project will evaluate and improve truck parking at multiple locations along I-70 statewide. \$30 million (INFRA grant)

Blue Springs to Odessa 25 miles

Future Improvements:
\$367 million

- STIP: \$43 million
- General Revenue: \$324 million

2025-2028

Odessa to Concordia 13 miles

Future Improvements:
\$150 million

- STIP: \$0
- General Revenue: \$150 million

Est. Start: 2027

Concordia to Boonville 42 miles

Future Improvements:
\$540 million

- STIP: \$15 million
- General Revenue: \$525 million

Est. Start: 2027

Boonville to Rocheport 13 miles

Completed: Rocheport Bridge
\$240 million

Future Improvements:
\$152 million

- STIP: \$2 million
- General Revenue: \$150 million

Est. Start: 2026

Rocheport to Columbia 14 miles

Future Improvements:
\$440 million

- STIP: \$41 million
- General Revenue: \$399 million

Est. Start: 2025

Columbia to Kingdom City 20 miles

Improvements:
\$426 million

- STIP: \$129 million
- General Revenue: \$297 million

2024-2027

Kingdom City to Warrenton 44 miles

Completed: Mineola Hill
\$31 million

Future Improvements:
\$583 million

- STIP: \$22 million
- General Revenue: \$561 million

Est. Start: 2026

Warrenton to Wentzville 19 miles

Improvements:
\$634 million

- STIP: \$200 million
- General Revenue: \$434 million

2025-2028

PROJECT STATUS



Design/
Procurement



Under
Construction



Complete

PLANNED CAPACITY IMPROVEMENTS:

STIP funded: \$452 million
General Revenue funded: \$2.84 billion

- 1.1 million jobs depend on I-70
- Workforce development opportunities
- I-70 carries 100 million tons of freight

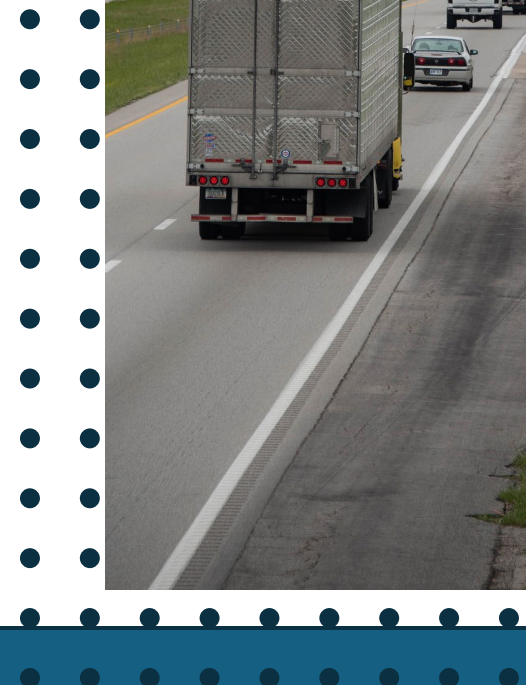
modot.org/improveI70

IMPROVE I-70: St. Louis



FORWARD 44

- **FY 2024:** \$20 million in General Revenue for I-44 environmental study
 - Oklahoma state line to Route 100 (Franklin County)
 - Update environmental studies completed in mid 2000s
 - Study complete May 2025
- **FY 2025:** \$577.5 million in General Revenue for corridor improvements
 - I-44 Springfield Route 160 to Strafford
 - I-44 at I-49 Fidelity improvements



-
- A photograph of a multi-lane highway with several large white semi-trucks and cars driving away from the camera. The road is flanked by bare trees and a clear blue sky.





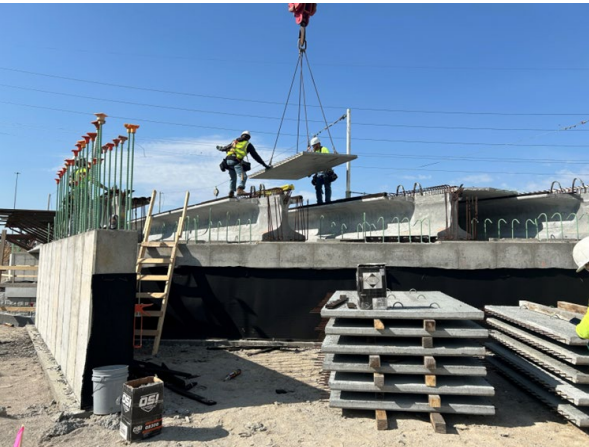
DISTRICT PROJECTS

- Construction: **100 active projects** worth **\$922 million**
- I-55 Bridges: St. Louis City & County
- I-270 at I-64: Major Bridge Work
- I-55 Jefferson County: Expansion

DISTRICT PROJECTS



- I-64 Boone Bridge: Rehabilitation
- Improve I-70: Warrenton to Wentzville
- Page Avenue over Lindbergh Blvd: Bridge
- Completion of the STL ADA Transition Plan



DISTRICT PROJECTS

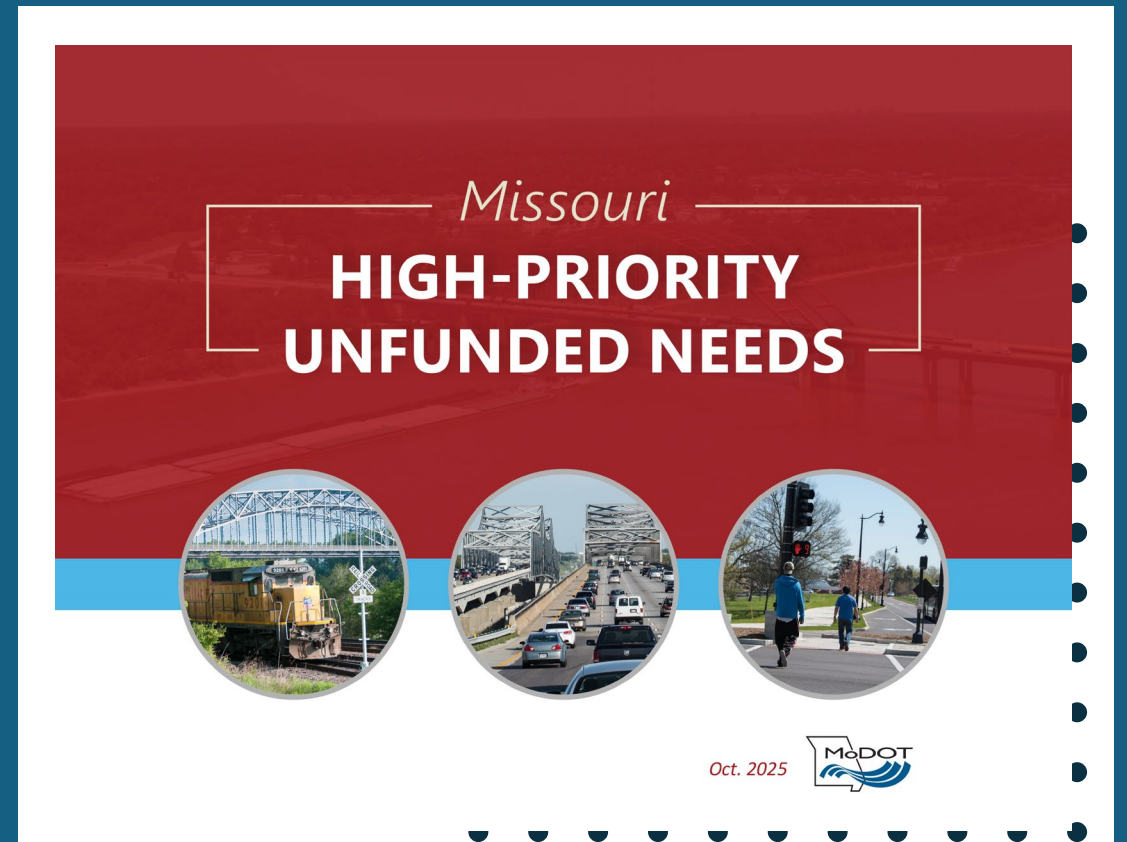
Coming Soon



- Route 370: Bridges & Paving
- Route 67: J-Turns at Route 94
- I-270 Bridge Rehab: I-44 to I-55
- Route 47 in Franklin County
- I-64 in the City of St. Louis
- I-44 Bridge Bundle (32 bridges)

UNFUNDED NEEDS

- \$4.7 billion of road and bridge needs in updated document
- Three tiers:
 - Tier one = could be accomplished in the current STIP horizon
- \$1.1 billion in multimodal needs



UNFUNDED NEEDS

ST. LOUIS DISTRICT

Amounts in \$1,000

TIER	IMPROVE BRIDGE CONDITIONS	IMPROVE ROAD CONDITIONS	INCREASE ECONOMIC GROWTH & IMPROVE SAFETY	MAJOR INTERSTATE RECONSTRUCTION	IMPROVE MULTIMODAL TRANSPORTATION OPTIONS	TOTAL
TIER 1	\$4,170	\$25,000	\$86,230	\$57,120		\$172,520
TIER 2	\$1,140	\$79,100	\$240,170	\$520,021		\$840,431
TIER 3	\$81,290	\$50,000	\$167,400	\$268,510		\$567,200
MULTI- MODAL					\$337,003	\$337,003
TOTAL	\$86,600	\$154,100	\$493,800	\$845,651	\$337,003	\$1,917,154

UNFUNDED NEEDS

ST. LOUIS DISTRICT

- **I-70 CORRIDOR IMPROVEMENTS FROM MISSOURI RIVER TO HANLEY RD**
 - Coordination with Lambert Airport Terminal Consolidation
- **MO ROUTE N – ST CHARLES COUNTY**
 - Capacity improvements west of I-64
- **MO ROUTE 100 – FRANKLIN COUNTY**
 - Intersection improvements from St. Johns Rd to I-44

ST. LOUIS DISTRICT OPERATIONS

Maintenance Operations Pavement and Bridge Work Plan Calendar Year 2025-2027

ST. LOUIS District

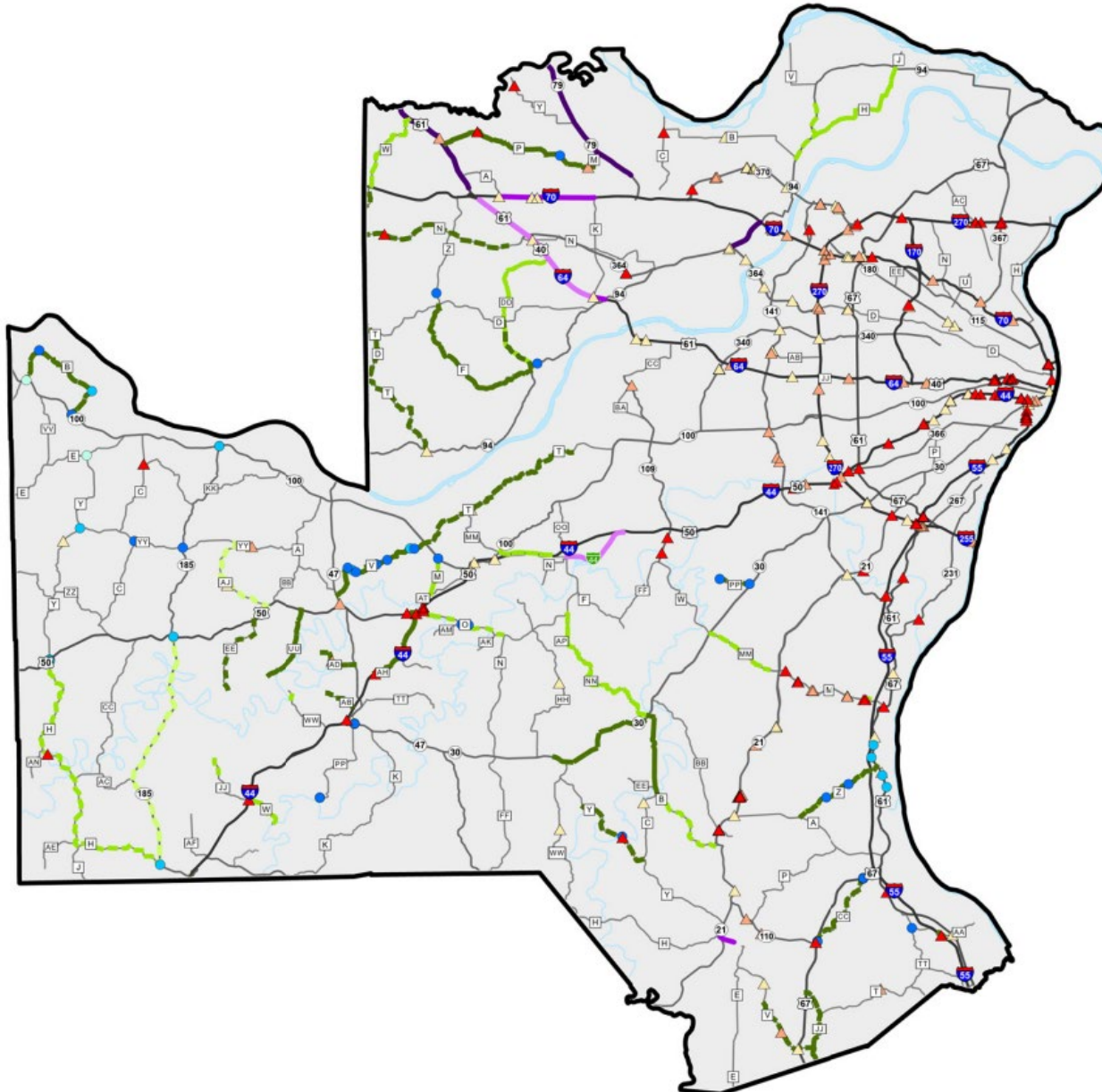
- ▲ 2025 Bridge Deck Sealing
- 2025 Pipe Replacement
- 2025 Pavement Repair
- 2025 Pavement Treatments
- ▲ 2026 Bridge Deck Sealing
- 2026 Pipe Replacement
- 2026 Pavement Repair
- 2026 Pavement Treatments
- ▲ 2027 Bridge Deck Sealing
- 2027 Pipe Replacement
- 2027 Pavement Repair
- 2027 Pavement Treatments

SFY 2024 Expenditures on all Transportation System Operations

Roadway:	\$36,700,000
Utilities and Tools:	\$15,900,000
Roadside:	\$7,900,000
Winter:	\$6,100,000
Incident Management:	\$1,300,000
Bridge:	\$3,100,000
Other ¹ :	\$3,200,000

¹ Includes insurance for general liability, vehicle liability and workers compensation.

*Note: These expenditures represent Labor, Equipment & Materials.



RESTORE OPERATIONS: *SIGN MAINTENANCE*

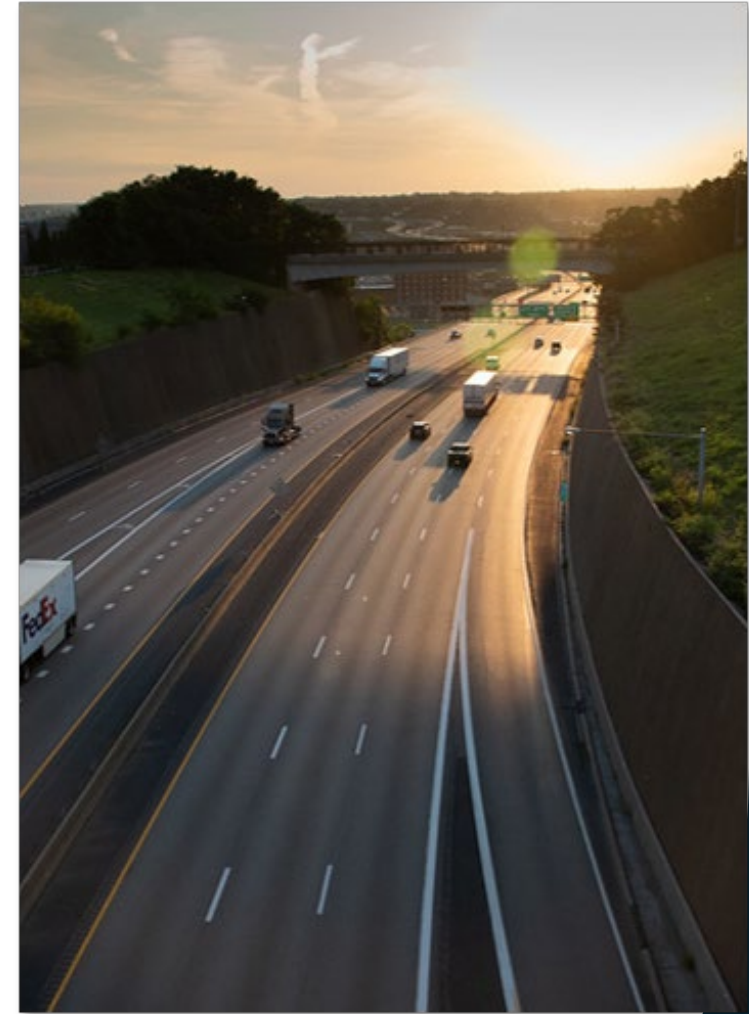
- **~700,000 signs**
 - 7.3 million+ square feet
- **Average life = 15 years**
 - Indicators of aging: peeling/cracking, loss of reflectivity
- **11% need replaced**
 - Goal = 7% need replaced each year to keep pace with aging infrastructure



Watch the discussion from the September Commission meeting by scanning the QR code above

Restore Operations: Asset Conditions

- Pavement Conditions
 - Major Routes/Interstates: 3,642 lanes miles – **81% Good**
 - Minor Routes: 2,165 lane miles – **79% Good**
 - Low Volume Routes: 130 lane miles – **79% Good**
- Bridge Conditions
 - Total Bridges Maintained: 1,167
 - 70% Fair / 26% Good / 4% Poor



Restore Operations: Asset Conditions

- Mobility Assets

- 42% of MoDOT's traffic signals (1,070)
- Majority of MoDOT's Dynamic Message signs (168)
- Majority of Closed-circuit TV cameras (709)
- 1,100 miles of fiber optic cable
- 88,000 sign faces on 59,000 assemblies (10% insufficient)

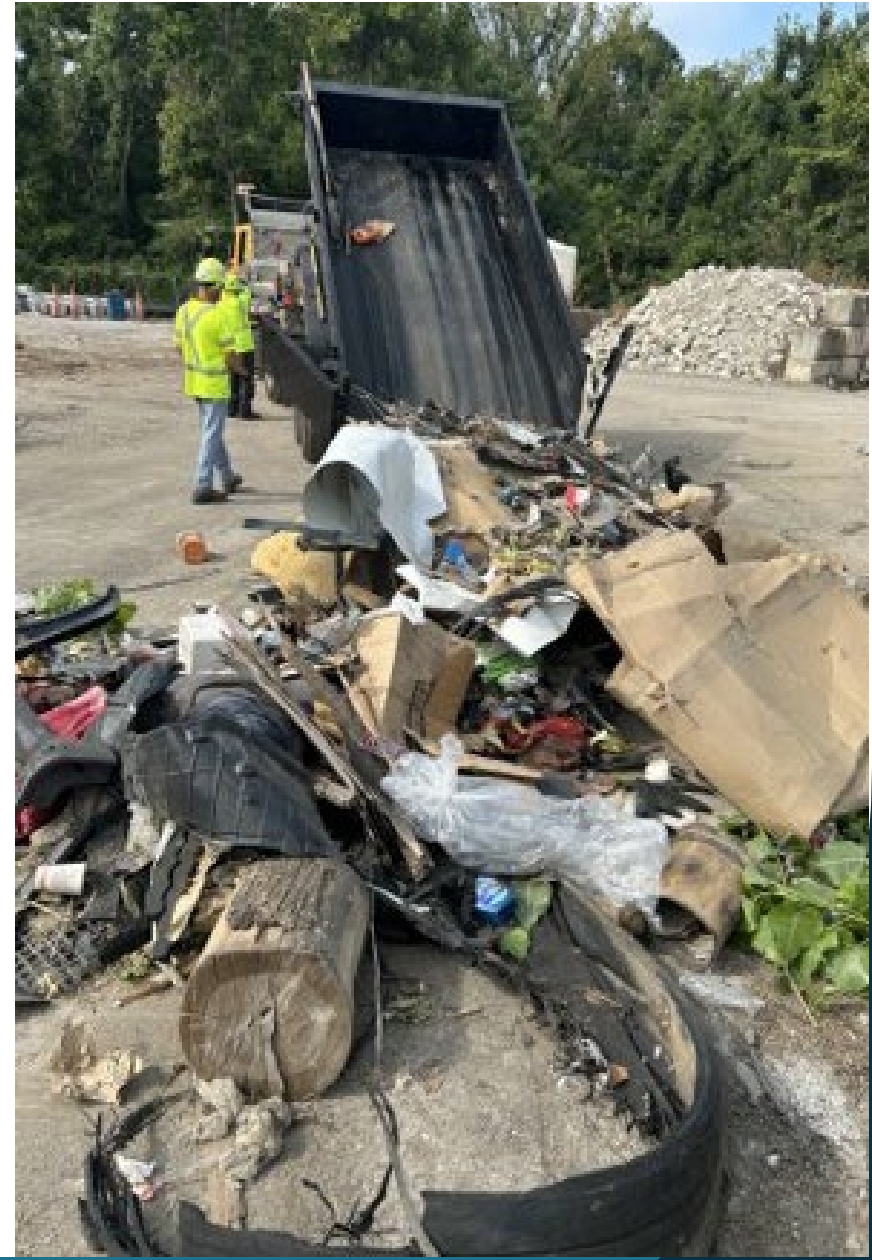
- Additional Assets

- 279 miles of concrete barrier
- 138 miles of guard cable / 36+ miles of sound walls



Restore Operations: Visible Results

- Litter Pickup
 - 18,337 hours spent
 - 83,700 bags collected (avg. = 20 lbs/bag)
 - Estimated cost YTD -- \$1.9 million
- Shoulder Sweeping
 - 23,696 hours spent
 - 8,800 tons of debris (equivalent to 64,000 sofas)
 - Estimated cost YTD -- \$2.1 million



Restore Operations: Visible Results

- Pothole Patching

- Estimated 50,750 potholes filled
- 2,030 tons of patching material used

- Bridge Maintenance

- Deck Sealing: 1,466,563 square feet on 101 structures
 - 16% increase in 2024
- Deck Repair: 2,693 square feet



Restore Operations: Visible Results

- Graffiti Removal
 - 2,200 hours spent in STL urban core
 - 85% of statewide removal occurs in St. Louis
 - Estimated Cost YTD = \$114,000
- Encampment Cleanup
 - 2,556 hours spent
 - Cost estimated at \$212,000
 - 90% of statewide cleanup efforts





WINTER OPERATIONS



St. Louis

- \$10 million last season
 - **2X the previous year**
- 28,000 tons of salt
 - **Up 254%**
- 78,500 labor hours
 - **Up 58%**
- 490,000 million miles driven
 - Previous year 250,000 miles
- 9 statewide events

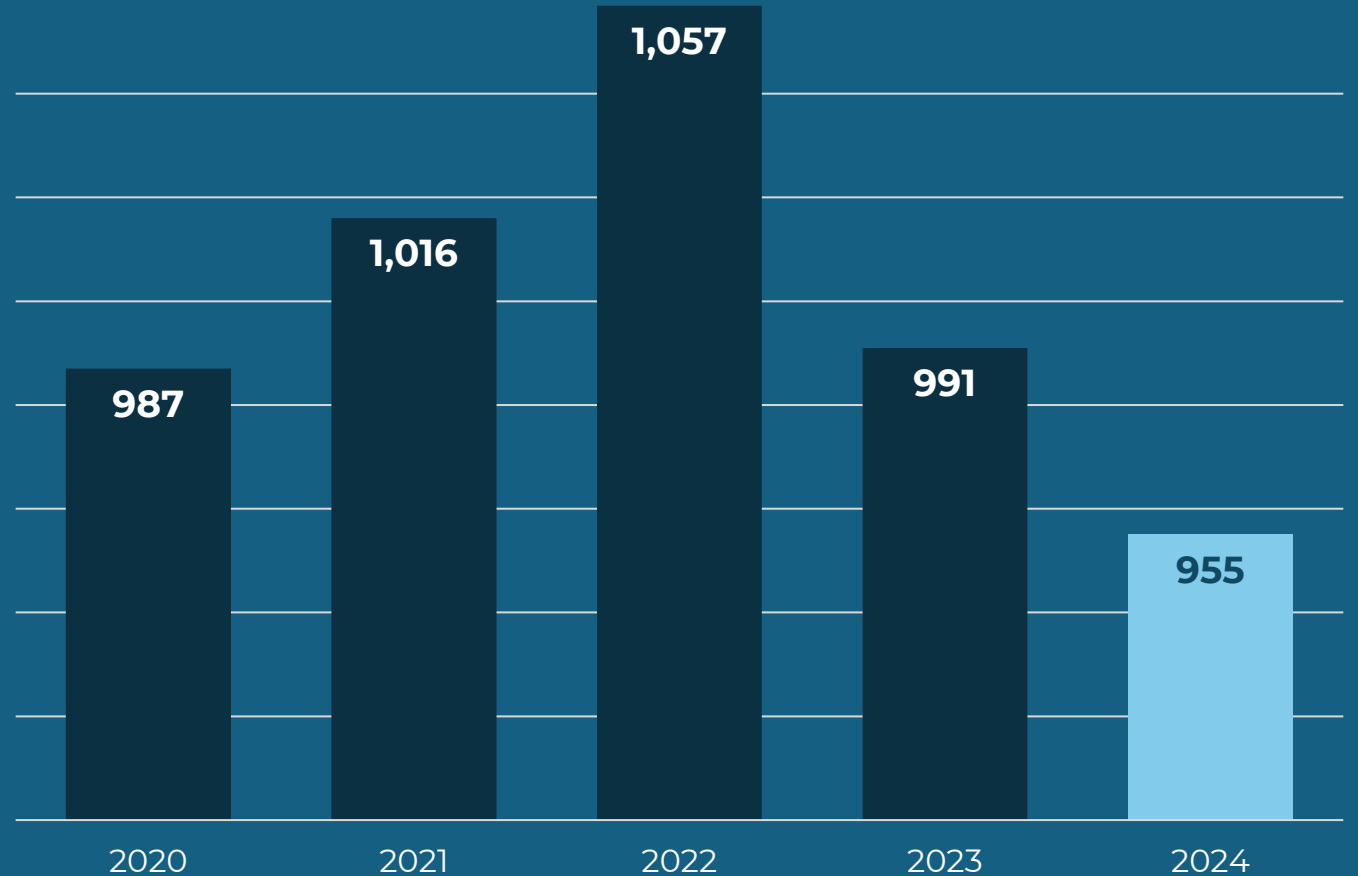
Statewide

- \$64 million spent last season
 - Five-year average is \$48M
- 140,000 tons of salt
 - Five-year average: 115,000
- 529,000 labor hours
 - Five-year average: 462,000
- 5 million miles driven
 - Up from 4.7M miles average
- 9 statewide events

WORK SAFELY:

TRAFFIC FATALITIES

- 2024: Second straight year of year-end decrease
- 2025 YTD:
 - 311 fatalities
 - On pace with 2024



SAFETY: EMPLOYEES

- 54% of all MoDOT TMA strikes happen in St. Louis



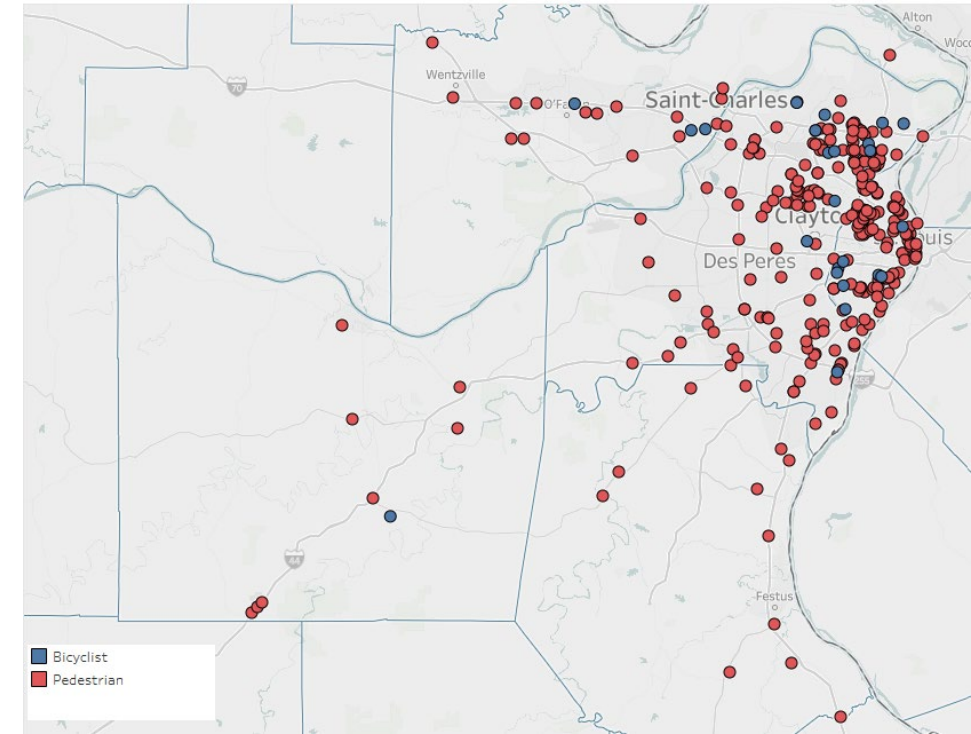
SAFETY: CUSTOMERS

- Traffic Crash Summary

- 157 fatalities (similar to 2024)
- 25% of fatalities involved bicyclist or pedestrians (38)
- Continued issues with seatbelt use, helmet use, speeding, and distracted driving.

- Work Zone Traffic Crashes

- 1,508 crashes (527 occurred on MoDOT system)
- 3 fatalities and 22 serious (slightly better than 2024)



Non-Motorized Fatalities 2020-2024



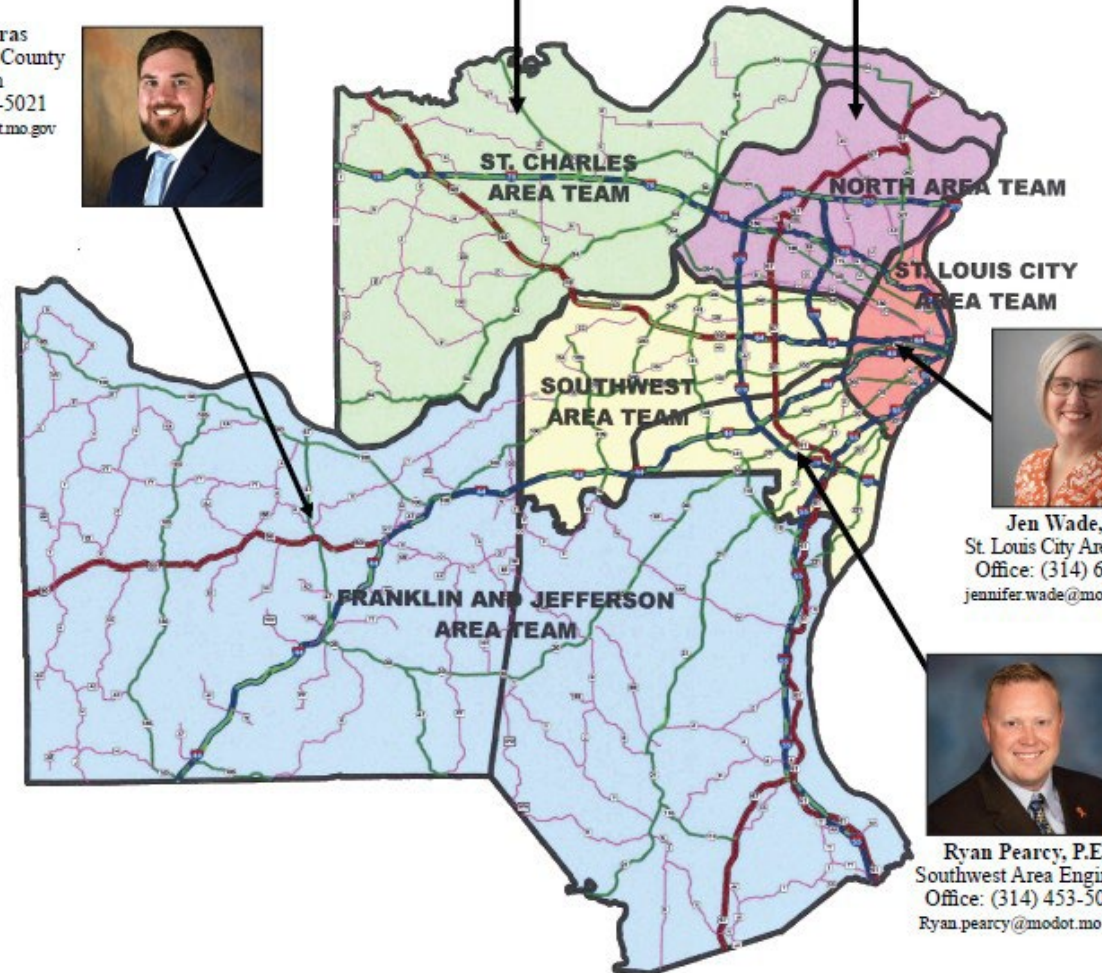
FOCUS ON CUSTOMERS: *ST. LOUIS DISTRICT AREA ENGINEERS*

Andy Tuerck, P.E.
St. Charles Area Engineer
Office: (314) 453-5046
andrew.tuerck@modot.mo.gov



Tabitha Locke, P.E.
North Area Engineer
Office: (314) 453-1749
tabitha.locke@modot.mo.gov

Jordan Dalaviras
Franklin/Jefferson County
Area Liaison
Office: (314) 453-5021
jordan.dalaviras@modot.mo.gov



Jen Wade, P.E.
St. Louis City Area Engineer
Office: (314) 624-7462
jennifer.wade@modot.mo.gov



Ryan Pearcy, P.E.
Southwest Area Engineer
Office: (314) 453-5086
ryan.pearcy@modot.mo.gov

CUSTOMER FOCUSED

- The St. Louis TMC serves as MoDOT's 24/7 statewide hub for after-hours calls and incident management.
- Our TMC handles more lane-blocking incidents than any other in the Midwest.
- Above-average increases in events, calls, and emergency responses.
 - Lane Blocking Incidents: 36/day (22% increase)
 - Work Zones: 25/day (5% increase)
 - Customer Phone Calls: 231/day (**63% increase**)



LEGISLATIVE EFFORTS

SAFETY

- **Ignition Interlock**
 - Require an individual found guilty of a first offense to install device
- **Child Passenger Restraints**
 - Require infants and toddlers to remain in rear-facing child restraint system from birth through the age of 2+
- **Booster Seats**
 - Require children to be placed in booster seats until they are 80 pounds and 57 inches tall, or age 8

LEGISLATIVE EFFORTS

MEMORIAL HIGHWAYS

- **Fallen Heroes Memorial Sign Fund**
 - Rename/expand the existing Missouri Medal of Honor Fund
 - Simplify the committee process and encourage memorial designations go through joint committee
 - Remove requirement that an individual be deceased for at least 2 years
 - Eliminate 100-signature requirement to apply

LEGISLATIVE EFFORTS

CLEANER ROADSIDES

- **Trash hauler fees**
 - Add additional fees per ton on trash moved or deposited through transfer stations or landfills
- **Points against license for failure to secure load**
 - Levy points against haulers' licenses when they're found to be in violation of existing load securement laws
- **Remove barriers to littering enforcement**
 - Change the level of littering offense from Class A misdemeanor to minor offense



www.modot.org