

ADDENDUM NO. 1

GRAVOIS ROAD / NORTHWEST SCHOOL IMPROVEMENT PROJECT

STP-5434 (607)

COUNTY OF JEFFERSON, MISSOURI

October 1, 2024

This addendum forms a part of the bidding and contract documents and modifies the original bidding documents. Acknowledge receipt of this addendum in the space provided on this bid form. **FAILURE TO DO SO MAY SUBJECT BIDDER TO DISQUALIFICATION.**

PROJECT PLANS:

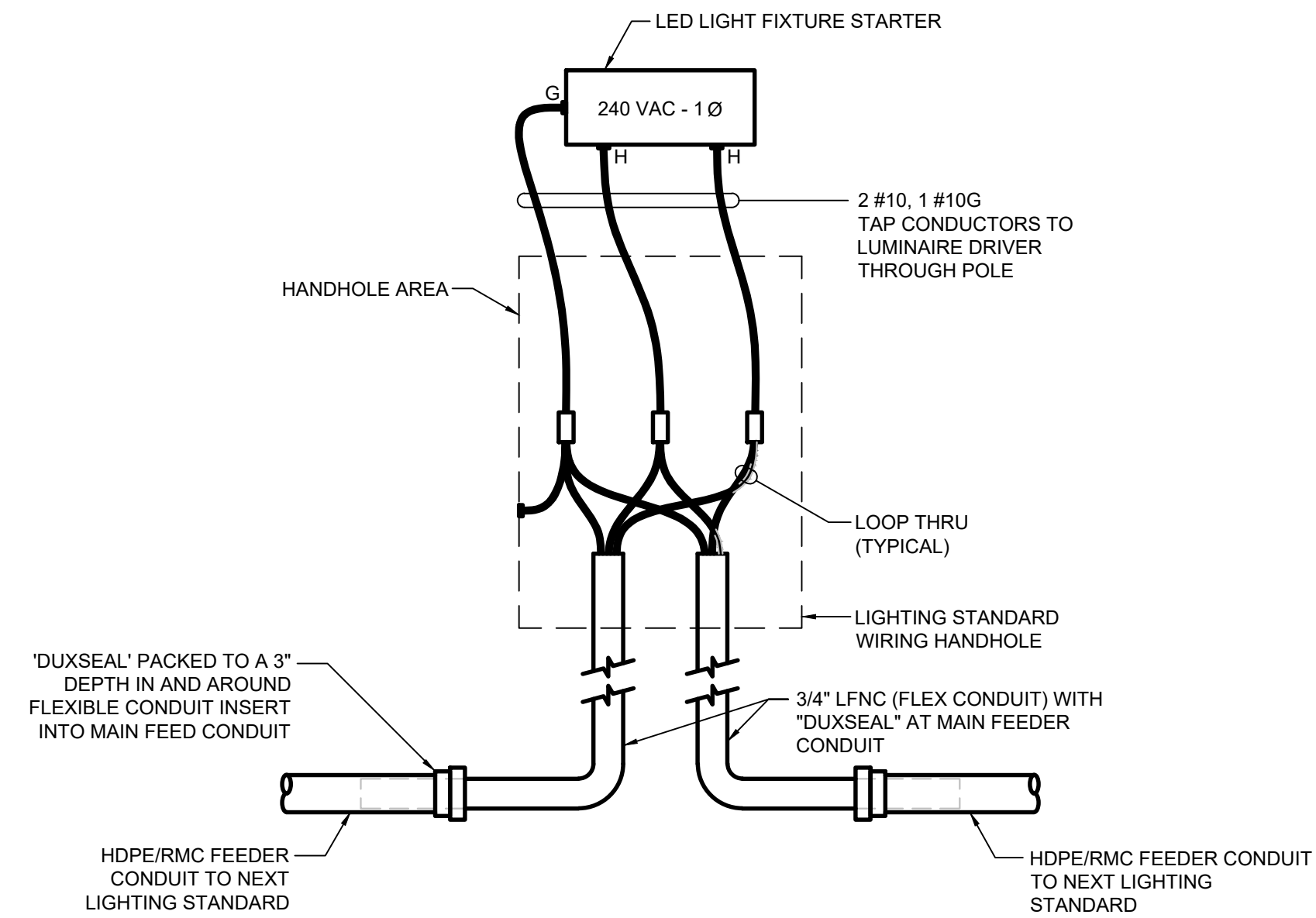
STP-5434 (607) Lighting Plans:

Replace Sheet E4.11 with E4.11A1 – Dated 9/30/24. The purpose is to update the Lighting Circuit wiring for the decorative street lighting.

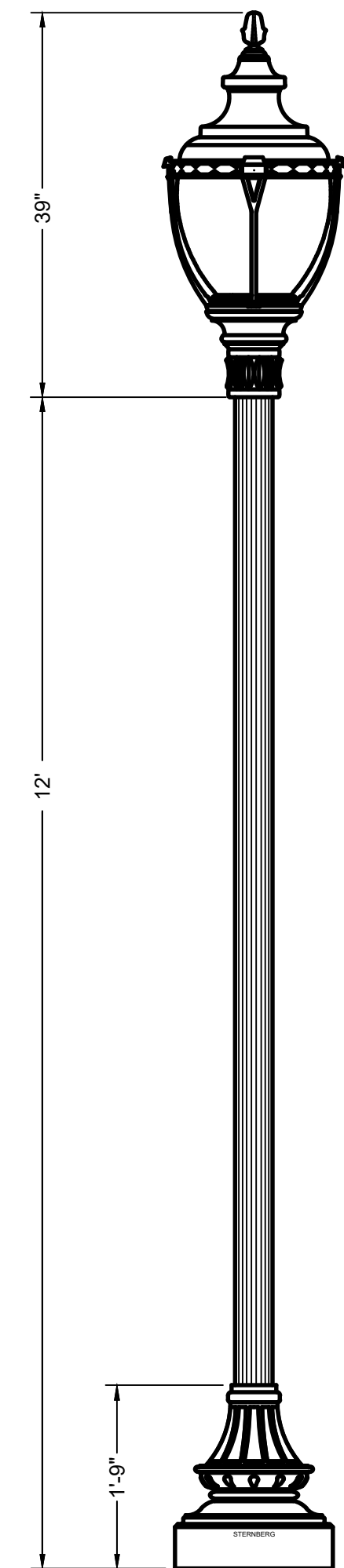
ADD Sheet E4.11A1.1. The purpose is to allow an alternate street lighting pole and fixture than that specified in the project plans.



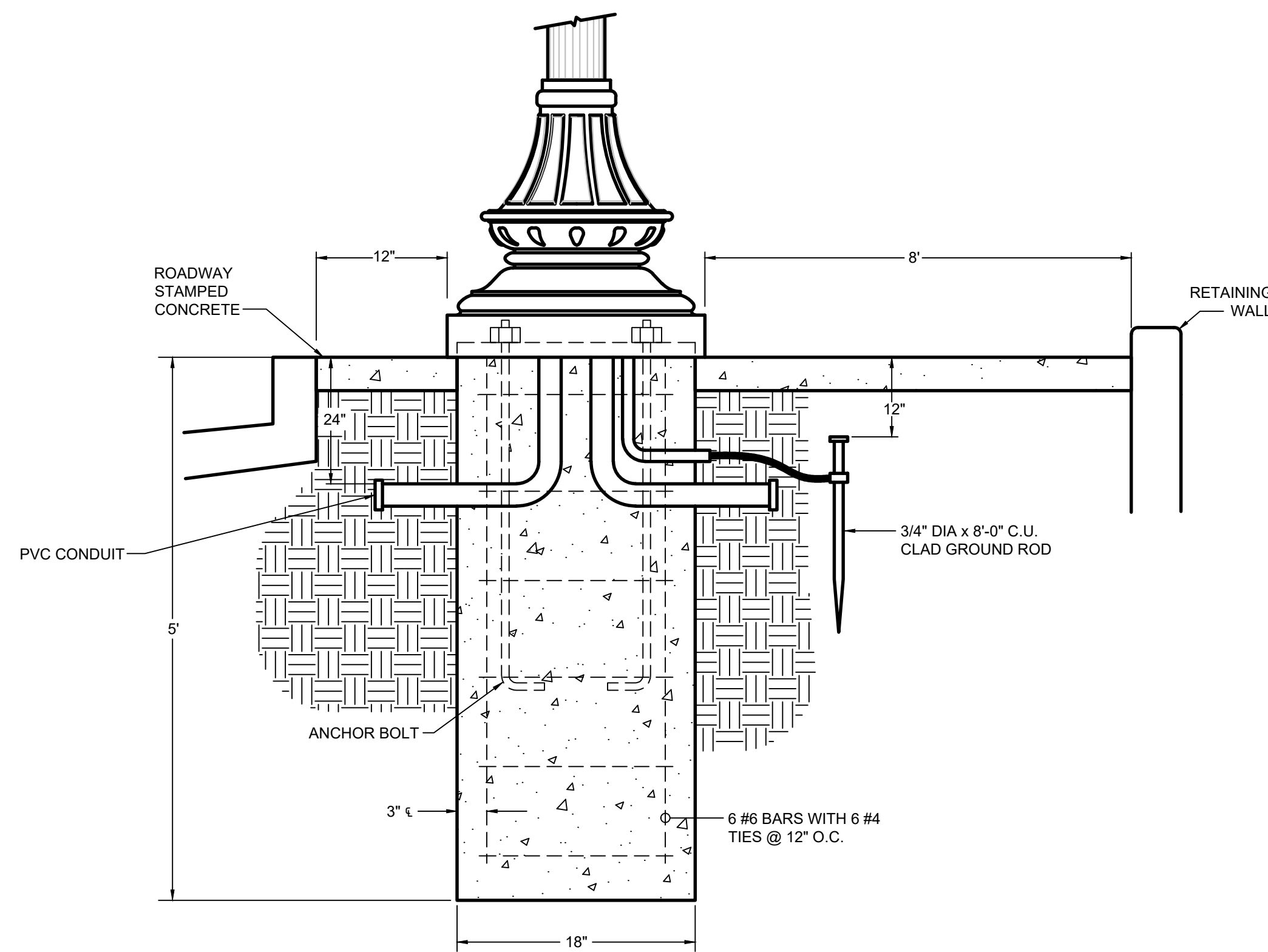
10-1-2024



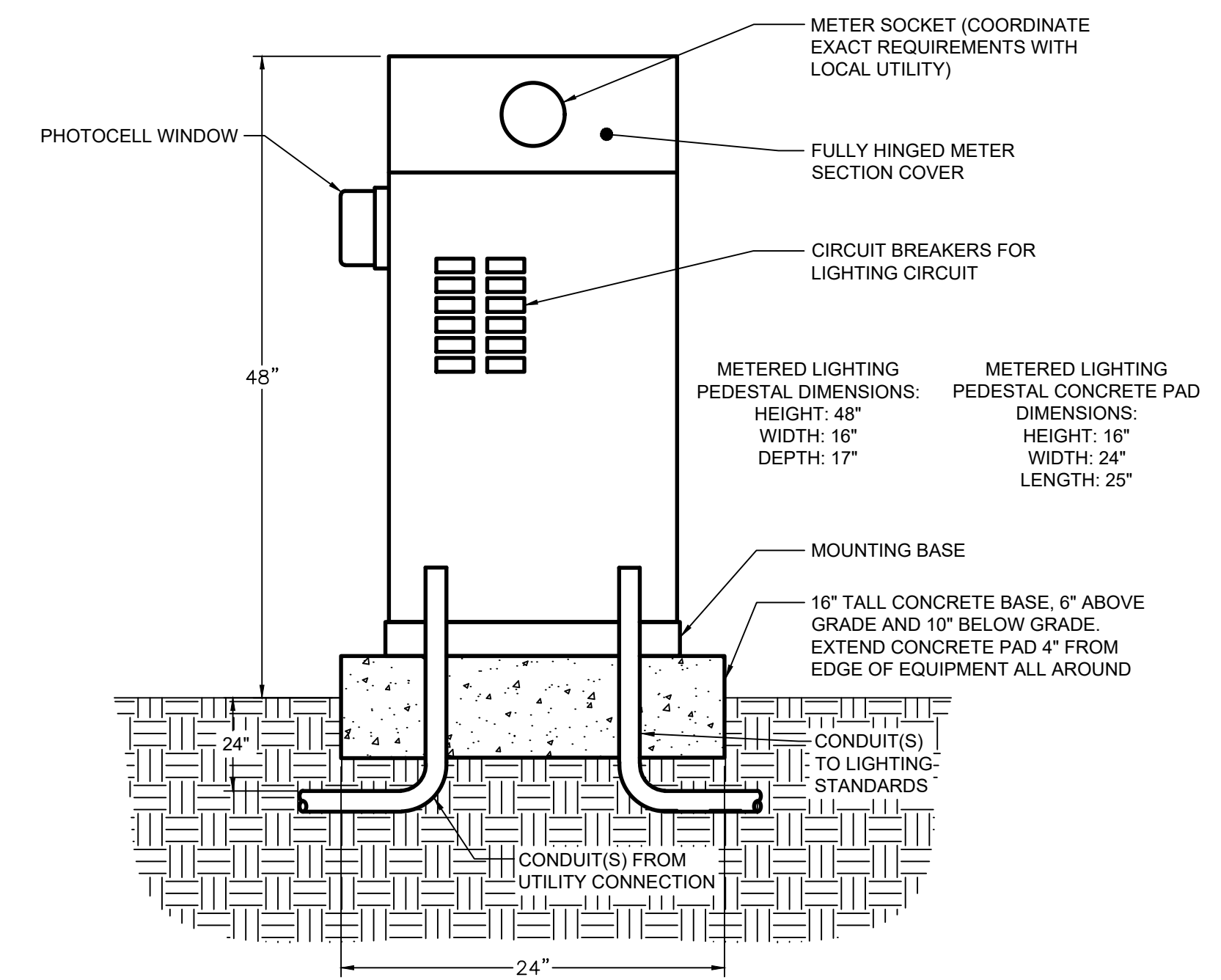
STREET LIGHTING WIRING DIAGRAM
SCALE: N.T.S.



POLE DETAIL
SCALE: N.T.S.



POLE BASE MOUNTING DETAIL
SCALE: N.T.S.



METERED LIGHTING PEDESTAL DETAIL
SCALE: N.T.S. (COLOR: BLACK)

BRANCH PANEL NAME	VOLTAGE	PHASE	WIRE	BUS SIZE	AIC RATING	
	120/ 240	1	3	100A	10,000	
100% NEUTRAL CODE: L=LIGHTING, R=RECEPTACLE, M=MOTOR, E=EQUIPMENT FLUSH MOUNTING TRIM						
NEMA 3R COPPER GROUND BAR 100A MAIN CB						
LOAD	CODE	POLE	BKR	CKT#	LOAD	
LIGHTING CIRCUIT	L 2	20	1	1,080	LIGHTING CIRCUIT	
			3	1,080		
			5			
			7			
			9			
	1	20	5			
	2	20	7			
	2	20	9			
	2	30	11			
2,160	PHASE A	RECEPT-W @	per NEC	-	TCL VA	4,104
1,944	PHASE B	LIGHTS-W @	100%	-	DEMAND VA	0
		MOTOR-W @	95%	-	HI-PH CONN. A	18
4,104	TCL	EQUIP-VA @	100%	-	DEMAND A	0

MARK	MANUFACTURER	CATALOG	LAMPS TYPE	INPUT WATTS	FINISH	MOUNTING	REMARKS
A	STERNBERG	PT-B750SRLED-5P-4A1R45T3-MDL03-A/4212TFP53-C/BK	LED COLOR 4500K	96	BLACK	POLE	----

EQUIVALENT FIXTURES AS MANUFACTURED BY LITHONIA, DAYBRITE, HUBBELL, COOPER & LSI PLUS WILL BE ACCEPTABLE UPON APPROVAL OF SPECIFIC MODEL NUMBERS BY ENGINEER.

ELECTRICAL DETAIL SCHEDULE	
	LIGHT POLE
	DISCONNECT SWITCH
	ELECTRICAL UTILITY METER
	PANEL BOARD
	UNDERGROUND ELECTRICAL CONDUIT
	UTILITY POLE

NO.	DATE	REVISION
1	09/27/24	ADDENDUM 1

HORNER SHIFRIN
 401 S. 18TH ST., STE. 400 SAINT LOUIS, MO 63103-2296
 314-531-4321 • FAX 314-531-6866 • HORNERSHIFRIN.COM
 DISCIPLINE: PROFESSIONAL ENGINEERING
 LICENSE NO. PE-2000154305
 EXPIRATION DATE: DECEMBER 31, 2024

GRAVOIS ROAD IMPROVEMENTS
 JEFFERSON COUNTY, MISSOURI
ELECTRICAL DETAILS



DATE: 9/30/24
 DESIGNED: GBM
 DRAWN: GBM
 CHECKED: KSS
 JOB NO. 2102010
 FED. NO. STP-5434(607)
 SHEET NUMBER:

E4.11A1

C:\pwr\jw\dw\me\horner\shifrin\com\td\mas56012\02010_Electrical.dwg September 27, 2024

CATALOG NUMBER: PAGL-75L-MT-7-45-PT-DBCS-4F-12-BK

SPECIFICATIONS

Housing: Corrosion resistant, cast A356 aluminum alloy, .188" min. wall thickness.

LED: 75 watts, multi-tap.

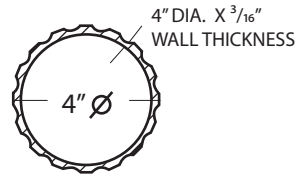
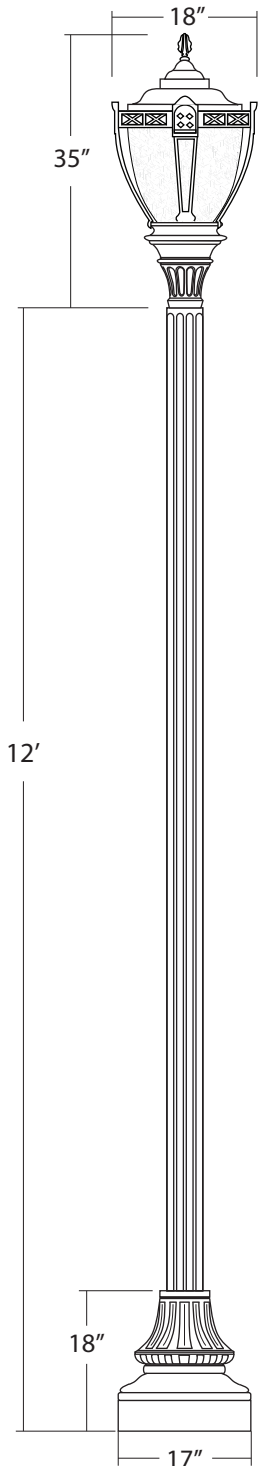
Acorn: Clear prismatic polycarbonate.

Pole: Fluted, durable corrosion resistant cast aluminum base with hand hole and cover. The pole shall be 4" dia. x 3/16" wall thickness, extruded 6063-T6 aluminum alloy.

Finish: Black polyester powder fuse coating.

LED ENGINE INFORMATION

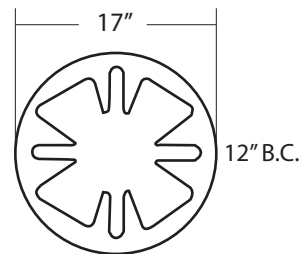
LUMINOUS FLUX	9525
WATTAGE	75
COLOR TEMPERATURE	4500K
CRI	>77
MILLIAMPS	350
OVERHEATING PROTECTION	YES
OPERATING POSITION	UNIVERSAL
AVERAGE LIFETIME 10% FAILURE	>80,000 HOURS
ENGINE MANUFACTURER	OSRAM
LUMEN MAINTENANCE AT END OF LIFE	70%
INPUT VOLTAGE	120-277
SURGE SUPPRESSION	10kV/10kA



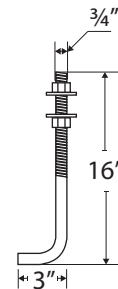
**SHAFT
CROSS SECTION**



**SEMI GLOSS
BLACK - BK**



BASE PLATE



ANCHOR BOLTS

Anchor bolts are fabricated from hot rolled steel bar with minimum yield strength of 50,000 psi. These are hot dip galvanized in accordance to ASTM-A-153.

E4.11A1.1



PACIFIC LIGHTING & STANDARDS COMPANY
LYNWOOD, CA
EST. 1984

SALES PERSON: JOHN MOORE		DATE: 09/25/24	CATALOG NUMBER: PAGL-75L-MT-7-45-PT-DBCS-4F-12-BK
DRAWN BY: CHRIS			PROJECT NAME: GRAVOIS N.W. SCHOOL
CHECKED:			CUSTOMER: LTG PARTNERS: ALEX HIGGINBOTHAM
REVISION:			
APPROVED:			
TYPE:	SCALE: NONE	PAGE 1 OF 1	