

2022 Missouri Department of Transportation **YEAR IN REVIEW**



www.modot.org

2022 YEAR IN REVIEW

OVERVIEW

FY 2023-2027 STIP approved

MoDOT's Statewide Transportation Improvement Program was approved by the Missouri Highways and Transportation Commission in July 2022, which allows a record \$10 billion in federal and state revenues for MoDOT to be invested in the state's transportation system over the next five years.

An average of about \$1.5 billion will be spent annually on road and bridge construction contractor awards, and an additional \$100 million in general revenue funds will be spent on low volume roads in FY 2023 from the governor's low volume road program. Funds will also be used for non-highway modes.

The STIP lists transportation projects planned by state and regional planning agencies from July 1, 2022, through June 30, 2026. The program details a focus on preventative maintenance improvements to Missouri's nearly 34,000 miles of roads and 10,400 bridges.



In developing the STIP, MoDOT and its planning partners developed a High Priority Unfunded Needs list to guide the development of projects into funded projects as state and federal transportation funds increase. This list derives from the broader unfunded needs list, which identifies a total of \$10 billion in unfunded needs.

In Nov. and Dec. 2021, the department hosted public meetings across the state, reviewed and finalized the document.



First combined State Freight and Rail Plan presented to Commission

MoDOT presented the final 2022 State Freight and Rail Plan to the Missouri Highways and Transportation Commission at its June 2022 meeting, marking the first time the department combined the freight and rail plans into the same document.

The document focuses on data to inform decisions for projects focusing on the goals of spurring economic growth, taking care of the system, keeping travelers safe, giving Missourians transportation choices, improving reliability and reducing congestion on the transportation system. It provides information and guidance for investment decisions to enhance passenger rail and all modes of freight movement in the state.

Given Missouri's central location and abundance of transportation resources available, a combined Freight and Rail Plan identifies strategies for the transportation network to operate harmoniously across all modes. Missouri's Rail Plan was last updated in 2012, and the State Freight Plan was updated in 2017. This new 2022 plan combines the State Freight and State Rail plans to allow access to federal funds and apply for multiple discretionary federal grants.

2022 YEAR IN REVIEW

MoDOT unveils new Safety Policy

The policy, known as Employee Safety Empowerment, gives employees the right to take immediate action to stop work to address imminent dangers and/or unsafe practices. Employees are expected to report these practices to their direct supervisor. The employee and the supervisor will then discuss the stop work action and immediately call the new MoDOT safety line to discuss next steps with the Safety and Operations leadership.

MoDOT also established the Safety Response Team (SRT) to quickly make organizational and policy decisions – under the chief safety and operations officer’s leadership – that are focused on expediting approvals related to safety. MoDOT has also implemented a new SAFER process to further incorporate safety measures in project design.



FARM Bridge Program progresses with completion in 2023

Construction started on more than one-third of the 31 bridges identified in the design-build

project called Fixing Access to Rural Missouri (FARM) Bridge Program in FY 2022. Six of those were reopened to the public before July 2022.

The remaining 19 bridges are scheduled to be finished by November 2023.

The program was made possible through a \$20.7 million federal grant and \$5.2 million in state funds.

While these bridges do not carry high daily traffic volume, they often provide crucial access for rural Missourians. The average age of these bridges is 80 years old.

The bridges to be worked on are weight-restricted, in poor condition, on timber pile or are one-lane but carrying two-way traffic.

Fatality Reduction Pales Against Show-Me Zero Goals

In the last 15 years, investments in safety enhancements like guard cables and high-friction surface treatments saved an estimated 951 lives on Missouri roadways.

According to early data, 96 people died in crashes between January and June of 2022. The first time that number has been less than 100 since 2019.

It’s welcomed news after a year that saw the most traffic fatalities in 15 years. For the first time since 2006, Missouri’s traffic fatalities surpassed 1,000 for a calendar year. According to preliminary data, 1,016 people were killed in Missouri traffic crashes in calendar year 2021, a 2% increase over 2020 and marking the second straight year of growing fatality totals after nearly a decade of steady decline.

Lack of seat belt use continued to be a common denominator in fatal crashes. Approximately two-thirds of vehicle occupants killed were not wearing a seat belt. Preliminary data shows drivers using a cellphone were involved in more than 2,200 crashes in Missouri in 2021, although distracted driving remains widely underreported. And 41% of the fatal crashes this year involved speeding or driving too fast for the conditions.

Missourians continue to show they are dedicated to reducing highway fatalities though. Launched in 2017, the Buckle Up Phone Down challenge has surpassed 20,000 pledges.

The initiative is simple: when you get into any vehicle, buckle up your safety belt. If you are a driver, put the cellphone down.



2022 YEAR IN REVIEW



MHTC celebrates 100 years

The MHTC celebrated its 100th anniversary on Dec. 1. The commission was formed in 1921 under the Centennial Road Law in conjunction with Missouri's first hundred years

of statehood. During that time, 105 individuals have served on the commission and 10 people have held the title of Commission Secretary.

The commission consists of six governor-appointed members who are confirmed by the Missouri Senate. Each serve a six-year term. The commission's mission is, in part, to establish policies, exercise oversight and ensure accountability in developing and maintaining a world-class transportation system in Missouri that fosters safety and economic development.



Supply Chain Task Force prepares, presents report to Gov. Parson

Gov. Mike Parson created the Missouri Supply Chain Task Force in November 2021, with MoDOT Director Patrick McKenna serving as co-chair with Dr. Mardy Leathers, director of the Division of Work Force Development.

The task force held meetings across the state with stakeholders from Jan. to May 2022. A full

report was presented to Gov. Parson identifying issues facing Missouri businesses and citizens, as well as potential solutions to address these challenges.

Missouri's key role in the supply chain with its national central location, major interstates and the two largest rivers in the country fueled the need for the report. The global pandemic recovery, increased consumer demand and work shortages are contributing to historic supply chain shortages here, across the nation and around the world.

MoDOT earns pair of Governor's awards

MoDOT was awarded the Governor's Award in the Innovation Category for its historic work on the I-35 and MO Route 152 displaced left-turn interchange in Kearney — the first-of-its-kind in the world.

The design allows for vehicles and pedestrians to travel through the interchange safely and quickly due to more efficient traffic signals allowing different traffic movements at the same time.

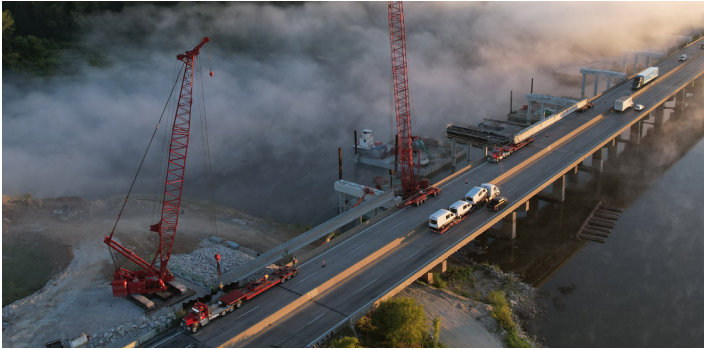
This design was created after studying diamond interchanges, including traditional, diverging and single-point exchanges. It combines the best attributes of these interchanges.

The department's other award came in the Customer Service Category for its work on the I-270 North Real-Time Mapping project.

MoDOT partnered directly with companies to update Global Positioning Systems (GPS) to provide travelers the most up-to-date and accurate travel information as quickly as possible. The process used to take up to six months, but the team reduced that down to two months.

This work resulted in a 2.8% decrease in the average number of crashes per day.

2022 YEAR IN REVIEW



Rocheport bridge ground-breaking

Construction on the Lance Corporal Leon Deraps I-70 Missouri River (Rocheport) Bridge began in October 2021 with the building of the new westbound bridge.

One of MoDOT's goals during this project is to limit traffic impacts on one of the nation's most crucial travel corridors, and by building the new bridge in two separate spans, it's accomplishing that goal. The westbound bridge, which will feature three lanes – one more than the old existing bridge – is scheduled to be completed by late spring of 2023.

The new bridges cost approximately \$240 million and were funded in part by an \$81.2 million INFRA Grant, the largest competitive grant ever received by MoDOT. When completed in 2024, the new bridge will serve interstate travelers for the next 100 years.

Aeronautical chart updated

MoDOT published the 2022-2023 Missouri Aeronautical Chart in June 2022. It provides pilots and users of Missouri's aviation system airport information, communication frequencies, a guide to airfield signs and airspace classification, and an updated listing of all aviation weather reporting stations in the state, their frequencies and phone numbers.

Each year, about 14 million passengers travel through Missouri's 121 airports. These airports also allow Missouri residents and businesses to ship and receive goods from all over the world. A 2012 Missouri Statewide Airports Economic Impact Study found Missouri employs more than 100,000 individuals in

aviation with an annual economic benefit of \$11.1 billion. Additionally, about 1.5 million takeoffs and landings are conducted annually at Missouri airports.

Focus on Bridges update

Progress on Gov. Mike Parson's initiative to repair or replace 250 bridges by FY 2024 continued this year. An additional 58 bridges were opened during FY 2022, bringing the total to 182.



Through June 2022, 242 bridges are complete or under construction, leaving just eight to be awarded and completed in FY 2023.

Buck O'Neil Bridge taking shape

Steel girders in excess of 100 feet long have been placed on the John Jordan "Buck" O'Neil Memorial Bridge.

The original bridge was built in 1956 and was known as the Broadway Bridge. It served a vital role in connecting downtown Kansas City to communities north of the Missouri River. The new bridge will continue to serve this key function for an estimated 50,000 vehicles for the next 100 years.

The \$220 million project is scheduled to be completed by late fall 2024. It will provide a safe, connective and accessible transportation facility that improves regional and local system performance.

2022 National Performance Report Card

RANKINGS	
1-10	= A
11-20	= B
21-30	= C
31-40	= D
41-50	= F



Road Conditions

Current Performance = 90 percent major highways (5,554 miles) in good condition. 80 percent of minor highways (17,848) in good condition.
National Ranking = Missouri had the 7th best pavements on the National Highway System. (FHWA Highway Statistics 2019)



Project Management

Current Performance = Missouri road and bridge projects were delivered within -0.1 percent of the award amount and 98 percent were delivered on-time.
National Ranking = Not available.



Infrastructure for Business

Current Performance = No internal measure
National Ranking = A CNBC business study ranks Missouri's infrastructure as the 10th best for business.



Administrative Costs

Current Performance = \$2,349 cost per mile
National Ranking = Missouri has the 13th lowest administrative cost per mile.



Customer Satisfaction

Current Performance = 73 percent satisfied customers
National Ranking = Missouri trails the highest rated company on the American Customer Satisfaction Index by 12 percent.



Congestion (travel time index)

Current Performance = Kansas City – 1.10 St. Louis – 1.08
National Ranking = Out of 101 urban areas, Kansas City ranked 29th and St. Louis ranked at 44th for congested areas in the U.S. (Texas Transportation Institute -2020)



Safety

Current Performance = 1,016 fatalities (2021)
National Ranking = Twenty-three states experienced more motor vehicle deaths ranking Missouri 27th.



Bridge Conditions

Current Performance = 7 percent of Missouri bridges in poor condition by deck area.
National Ranking = Missouri ranked 43rd for the percent of bridges in poor condition by deck area. (FHWA Highway Statistics)



Revenue –

Current Performance = \$60,567 revenue per mile
National Ranking = Missouri has the 48th lowest revenue per mile. (2021 FHWA Highway Statistics)



Employee Turnover

Current Performance = 18.94 percent
National Ranking = Not available

Last updated November 2022

SAFETY

Be Safe

Be Accountable

SERVICE

**Be Respectful
Be Inclusive**

Be Bold

Be Better

STABILITY

Be One Team

**So we can be a
great organization**



www.MoDOT.org



www.modot.org

Cover photo by Cathy Morrison, Aug. 20, 1962 – Nov. 3, 2022
Award-winning photographer, co-worker and friend. You are missed.