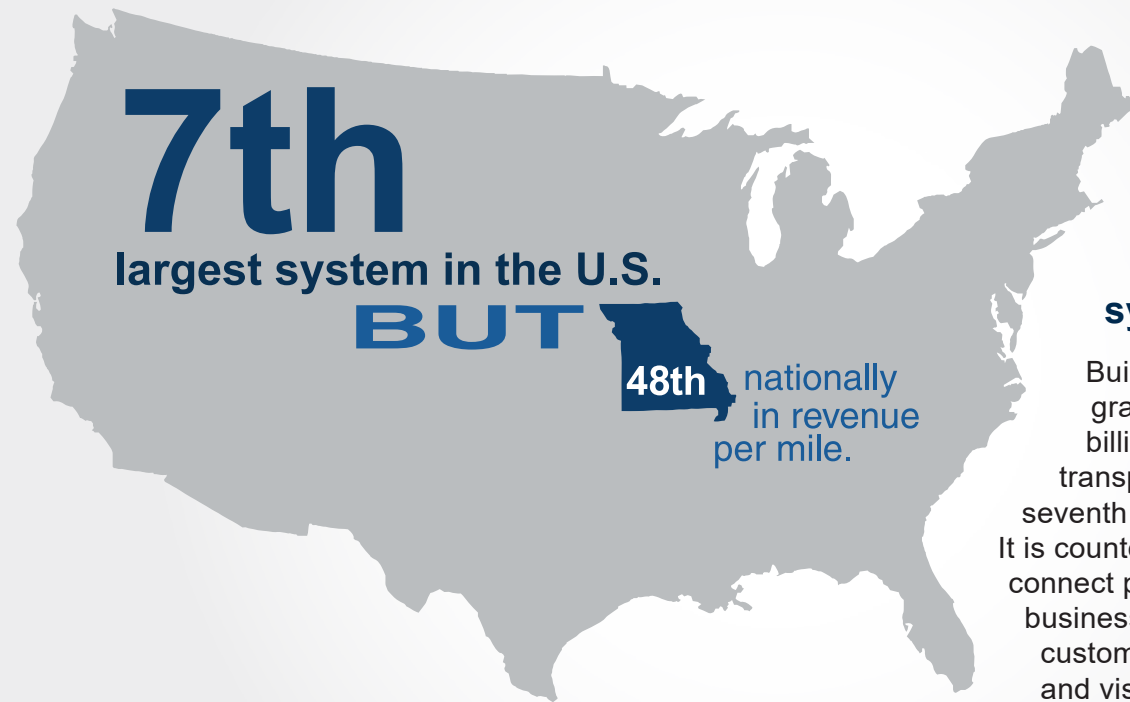


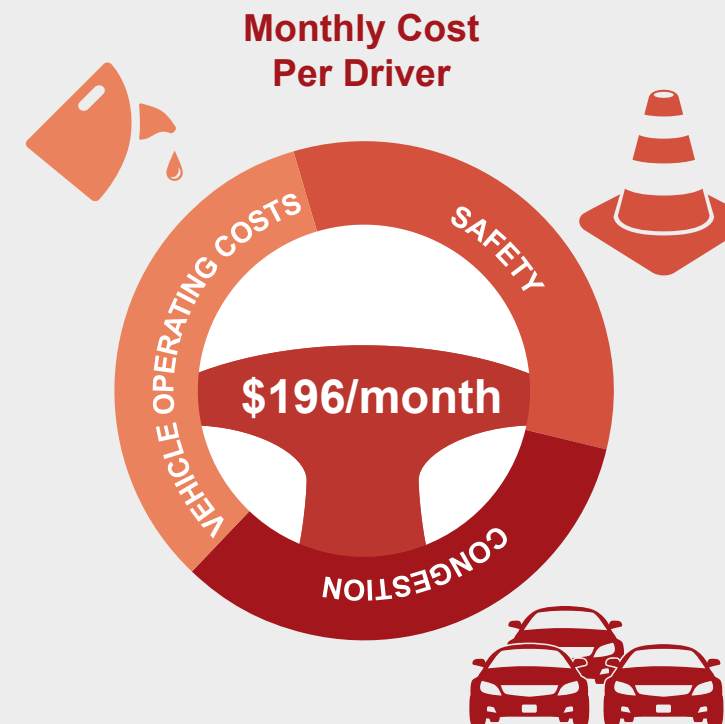
CITIZEN'S GUIDE TO TRANSPORTATION FUNDING IN MISSOURI

www.modot.org/guidetotransportation



The citizens of the state of Missouri own a tremendous asset – the state transportation system.

Built by our parents and grandparents and funded by \$56 billion in user fees, Missouri's transportation system is the nation's seventh largest state highway system. It is counted on to safely and reliably connect people with jobs and services, businesses with suppliers and customers, students with schools and visitors with destinations.



HOW MUCH DO CURRENT ROADWAY CONDITIONS COST MISSOURIANS?

Missourians pay a relatively small amount per month to use the state system of roads and bridges. The average Missouri driver pays about \$30 per month in state and federal transportation taxes and fees. That's far less than what the average Missourian pays for cell phone service, cable television or internet service.

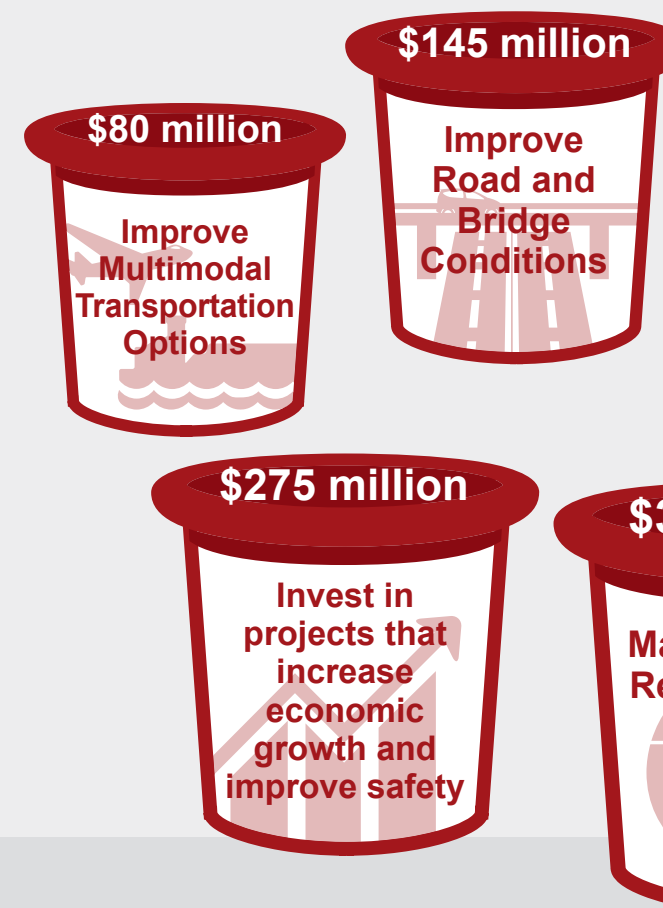
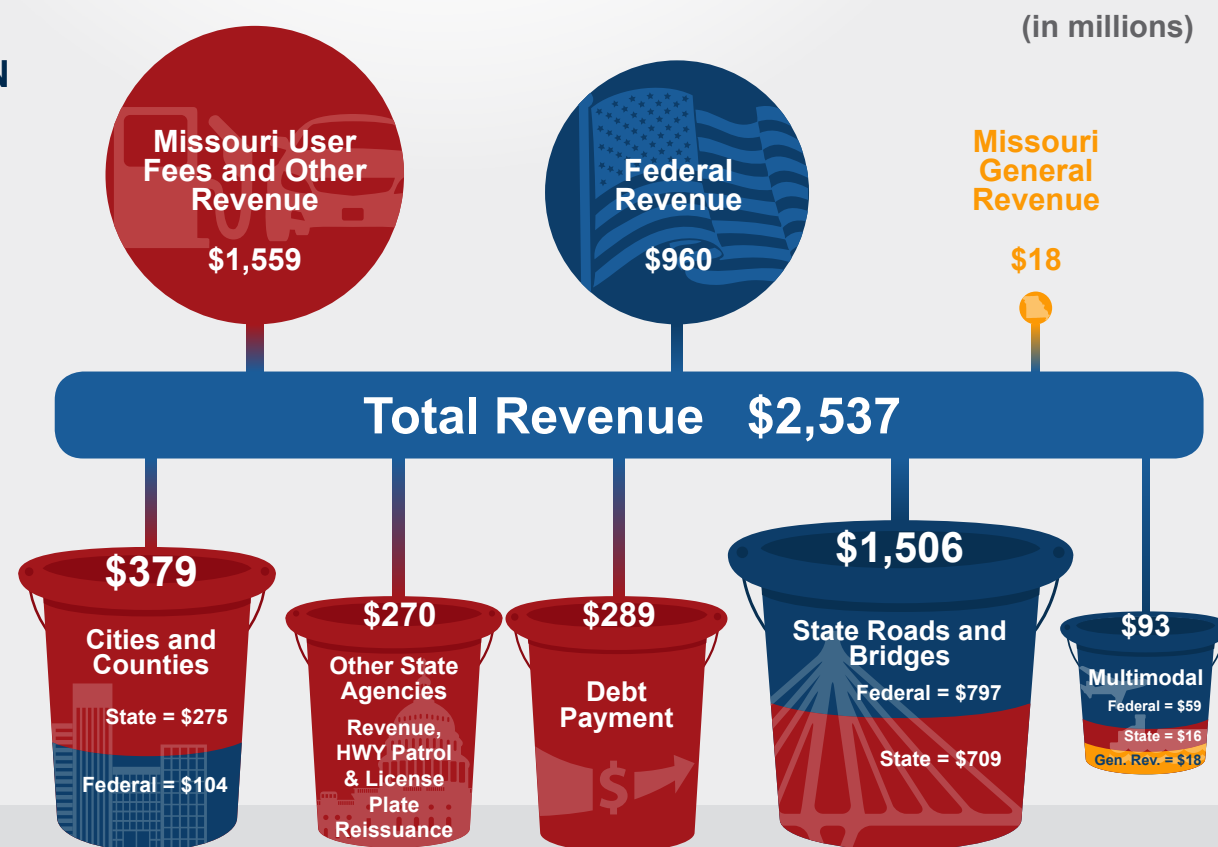
But there are also hidden transportation costs that Missourians may not realize they are absorbing when they sit on congested highways, drive on rough roads or experience vehicle crashes.

How much do you pay?
Go to www.modot.org/TransportationDollars/TransportationDollars.html



MISSOURI TRANSPORTATION FUNDING

In 2019, nearly two-thirds of Missouri's transportation revenue came from state user fees and one-third from federal revenue. A small fraction of funds came from the state's income tax and general sales tax. The total revenue is distributed into five "buckets" for various transportation purposes as determined by state laws. Each bucket has a unique blend of state and federal revenue.



HIGH-PRIORITY UNFUNDED ANNUAL TRANSPORTATION NEEDS

Input from Missourians resulted in four goals for the state's transportation system over the next 20 years:

1. Take care of the transportation system and services we enjoy today.
2. Keep all travelers safe – no matter the mode of transportation.
3. Invest in projects that spur economic growth and create jobs.
4. Give Missourians better transportation choices.
5. Improve reliability and reduce congestion on Missouri's transportation system.

www.modot.org/guidetotransportation

Missouri Department
of Transportation
1-888-ASK-MoDOT
modot.org

