



*Welcome to the  
Public Information Meeting  
for the*

# Route N Study





# Meeting Purpose

The purpose of this public information meeting is to:

- Introduce the Route N Study
- Outline the Environmental Assessment (EA) process and timeline
- Route N issues and vision
- Get your input



# Station #1

## Study Overview



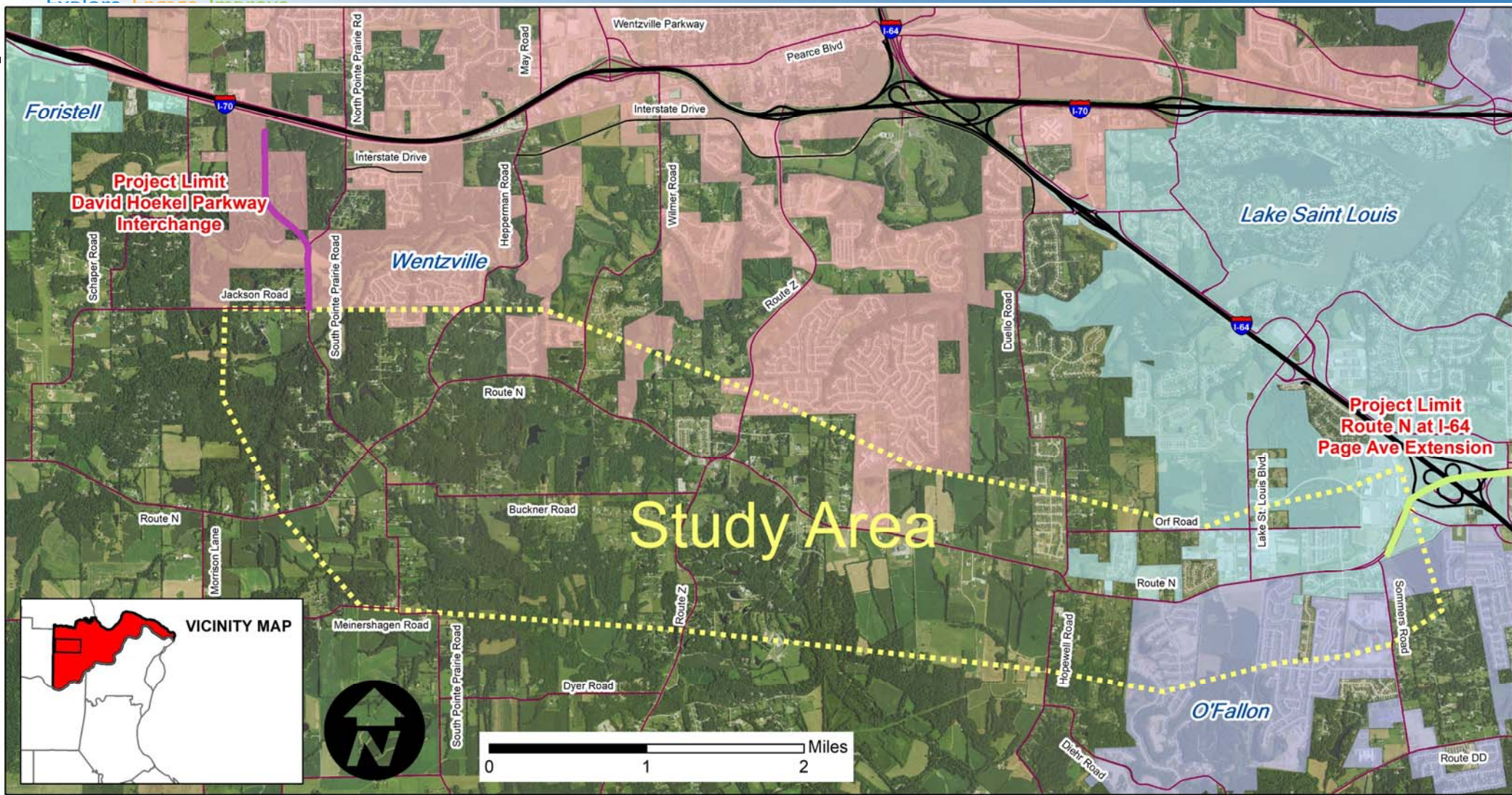
# Why is the Route N Study Being Performed?

- Missouri Department of Transportation (MoDOT) and the Federal Highway Administration (FHWA) are co-lead agencies
- National Environmental Policy Act (NEPA) Study being processed as an Environmental Assessment (EA)
- An approximately eight-mile stretch of Route N in St. Charles County
  - The Route N Study extends from west of South Point Prairie Road east to the I-64/Route 364 interchange (see next board)
- Goal is to assess the needs, impacts, and overall effectiveness of potential alternatives to address those needs
- St. Charles County and East-West Gateway Council of Governments are partners on this study





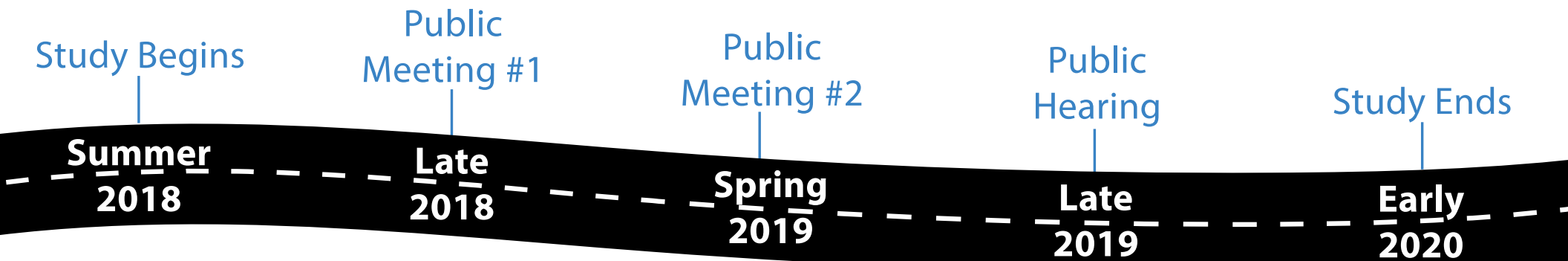
# Study Area Map



*The study area highlighted in yellow represents the general geographic area within which data will be gathered and the effects of the project will be examined. The limits of the proposed improvements, which are used to quantify impacts, will be considerably narrower and will be identified later in this study.*

# Project Schedule

- Public Meeting #2 – Spring 2019
  - Reasonable range of alternatives
- EA – Summer 2019
- Public Hearing – Late 2019
  - Preferred Alternative
- Study Complete – Early 2020





# Is the Project Funded?

- This study is an important step forward towards funding
  - Regional long-range plan evaluates which projects to advance – must be fiscally constrained
  - Projects in long-range plan are eligible for federal funding
- The EA serves as the next step in project development
- Completion of the EA is required for MoDOT and the region to utilize federal funding



# STATION #2

National Environmental Policy Act (NEPA)



# NEPA: The Basics

*“To declare a national policy which will encourage productive and enjoyable harmony between man and his environment; to promote efforts which will prevent or eliminate damage to the environment and biosphere and stimulate the health and welfare of man; to enrich the understanding of the ecological systems and natural resources important to the Nation; and to establish a Council on Environmental Quality.”*

- National Environmental Policy Act (NEPA)
  - National policy regarding the environment
  - National Council on Environmental Quality (CEQ) established to oversee government activities that could affect the environment

# National Environmental Policy Act (NEPA) – The Basics

- Federal Requirement for all proposed federal actions
  - Including the use of federal funds
- Each federal agency is required to evaluate the social and environmental impacts of the proposed improvement(s)

- Accomplished by preparing a/an:

- Categorical Exclusion (CE)
- Environmental Assessment (EA)
- Environmental Impact Statement (EIS)

	CE	EA	EIS
<b>Impact significance</b>	Not significant	Possibly not significant; need to determine	Potential to be significant
<b>Public Process</b>	Minimal	Some disclosure is required, as well as a location public hearing	A rigorous approach and a public hearing is required
<b>Level of detail in documentation</b>	Generally a “checklist” approach	Varies – from a checklist to a big narrative volume	Varies, but not unusual to be 200-300 pages
<b>Timeline</b>	A few weeks to several months	A few months to multiple years	Often multiple years

# NEPA “Umbrella”

## Other laws have established interlocking or overlapping requirements

- Solid Waste Disposal Act
- Resource Conservation and Recovery Act of 1976
- Comprehensive Environmental Response, Compensation and Liability Act
- Emergency Planning and Community Right to Know Act of 1986
- National Historic Preservation Act
- Economic, Social and Environmental Effects
- Highway Noise Standards
- State Noise Standard
- Public Hearing Requirements
- Section 9 - Bridge Permits
- Section 7, Endangered Species Act, (FWS)
- Rivers and Harbors Act, Section 10 (COE, USCG)
- Archaeological and Historic Preservation Act
- Archaeological Resources Protection Act
- Title VI of Civil Rights Act of 1964
- Americans with Disabilities Act
- Executive Order 12898 (Environmental Justice)
- Section 4(f) of USDOT Act (49 USC 303)
- Clean Air Act
- Safe Water Drinking Act
- Farmland Protection Policy Act
- Section 6(f) of the Land and Water Conservation Fund Act (LWCFA).
- Conformity - (CAAA)
- Executive Order 11990, Wetlands
- Clean Water Act, Sections 401 & 404 – Wetlands (States, COE)
- Executive Order 11988, Floodplains
- Executive Order 12898 - Federal Actions to Address Environmental Justice in Minority Populations and Low-Income Populations, February 1994
- Uniform Relocation Assistance and Real Property Acquisition Policies Act of 1970

# Elements of NEPA Studies

- Scoping
- Purpose and Need
- Alternatives
- Impact Assessment
- Mitigation
- Public Involvement
- Interagency  
Coordination



# Station #3

## Route N Issues and Vision





# How do you use Route N?

- Please tell us:
  - Where you encounter issues in the Route N Corridor
    - Be specific as to location, issues, time of day, etc.
  - Locations of sensitive environmental resources
  - What is your vision for the future of Route N
- MoDOT will use this information to develop the project's purpose & need and alternatives
- *There are multiple maps at this Station that display the same information – please use any of the maps to provide comments*



# Station #4:

## Your Involvement & Input



# Study Advisory Groups also Providing Input

- Technical Advisory Group (TAG)
  - Agencies including St. Charles County, East West Gateway Council of Governments
  - Assist MoDOT in technical aspects of the study including alternatives development and evaluation
- Community Advisory Group (CAG)
  - Stakeholders directly impacted by the study including emergency responders, residents and businesses
  - Advise MoDOT on project issues, alternatives and potential solutions





# Stakeholder Interview Summary

- In person and phone interviews were conducted with numerous community leaders, residents, emergency responders, and businesses
- Most frequent concerns identified:
  - Lack of shoulders on rural section
  - Lack of left turn lanes, especially at the schools
  - Bottleneck and configuration issues at Route N/Route Z
  - Lengthy traffic backups during the morning and evening rush hours
  - Rapid residential growth
  - Bends in road create blind spots





# Your Involvement is Important!

- Visit the study website

[www.RouteNStudy.com](http://www.RouteNStudy.com)

- Receive email updates
- Attend future public meetings
- Request a presentation for your group, condominium association, or subdivision by contacting MoDOT
  - By phone: 1-888-ASK-MODOT
  - Via email: [RouteNStudy@modot.mo.gov](mailto:RouteNStudy@modot.mo.gov)





# What's Important to You?

- What do you love and enjoy about the Route N area?
- What are the issues you see with Route N currently and how does it make you feel?
- What factors should the study team consider as it develops alternatives, performance measures, and evaluation criteria?
- Think about the **other** places you love and enjoy, are there elements from those places you would like to see with the future of Route N?

***PLEASE COMPLETE A COMMENT FORM***



# Your Comments

- Written comments in response to tonight's public meeting should be submitted to MoDOT by November 30, 2018

- Please send comments to:

*Shaun Tooley*

*MoDOT*

*1590 Woodlake Drive*

*Chesterfield, MO 63017 or*

[RouteNStudy@modot.mo.gov](mailto:RouteNStudy@modot.mo.gov)

*All comments will become part of the official EA record*

