

# Vernon County Route N Bridge Replacement over Little Dry Wood Creek

## Project Facts:

- ◆ Replace bridge on Route N over Little Dry Wood Creek between Bronaugh and Sheldon, Mo
- ◆ Existing bridge deck: 22' width, 210' length
- ◆ Proposed bridge deck: 24' width, 226' length
- ◆ Add guardrail to bridge ends



## Bridge Facts:

- ◆ Built in 1962
- ◆ Bridge deteriorating; last inspection (6/16/2015) rated in poor condition

## Traffic Impacts:

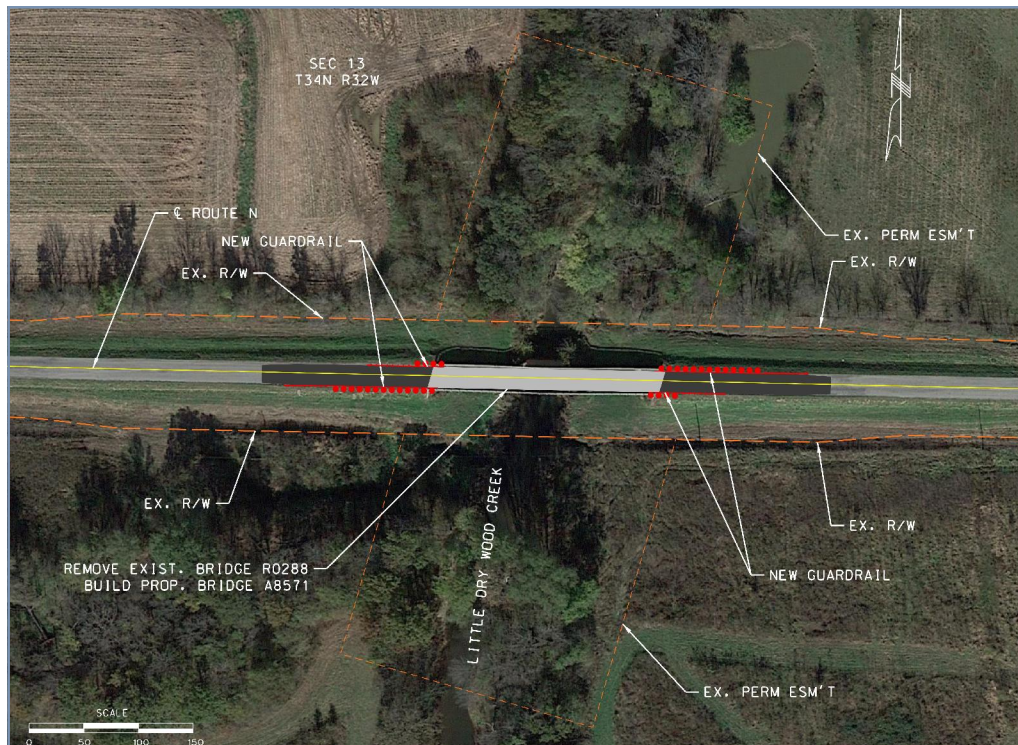
- ◆ Route N will be closed at the bridge site for the duration of the project
- ◆ No detour will be signed

## Construction:

- ◆ 2018 (Closed up to 105 calendar days)

## Estimated Total Project Cost:

- ◆ \$1.2 million



## For more information:

[www.modot.org/southwest](http://www.modot.org/southwest)  
417.895.7600 or 1.888.275.6636 (toll-free)  
Facebook: MoDOT.Southwest  
Twitter: MoDOT\_Southwest  
Instagram: @MoDOT\_Southwest

