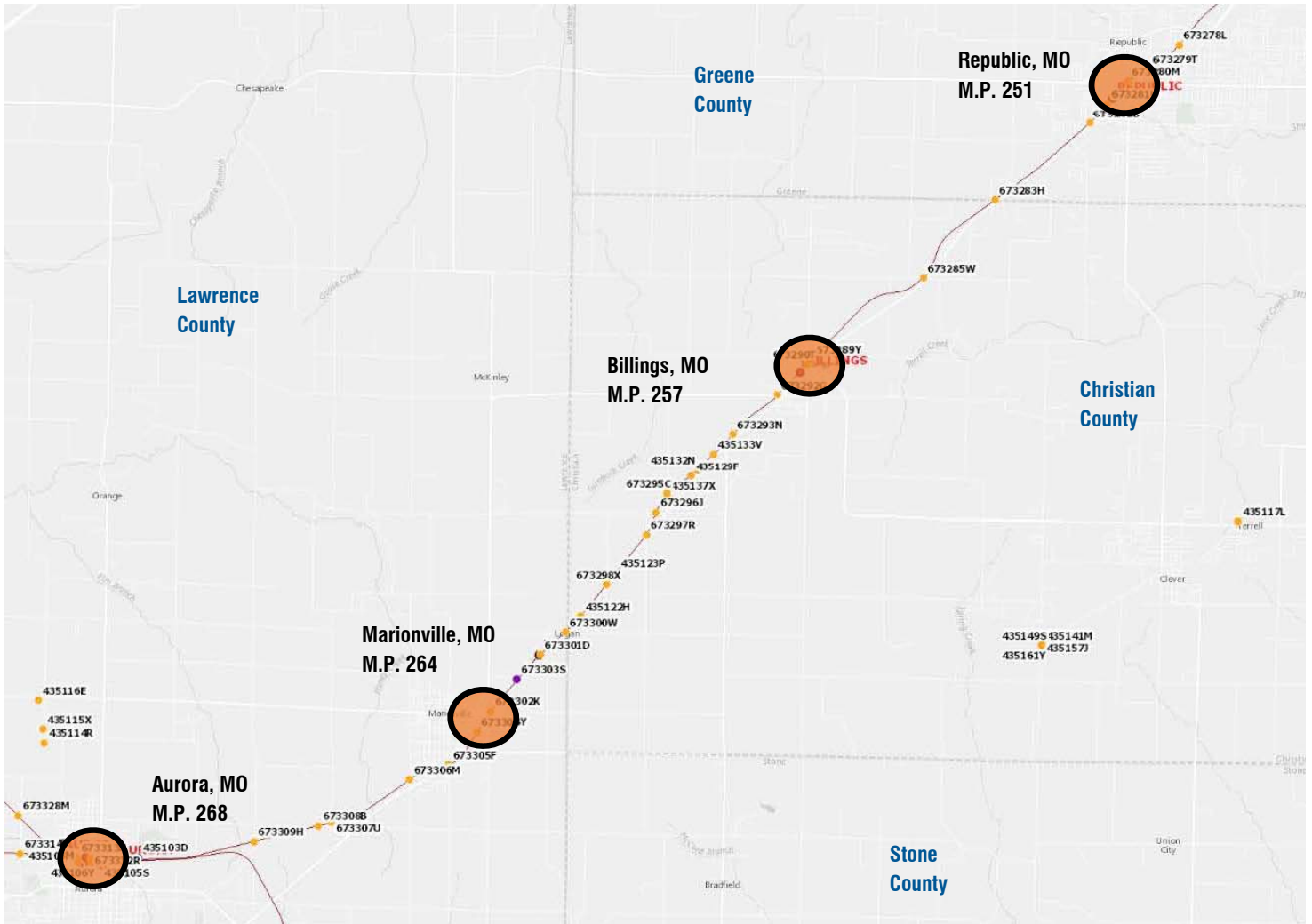


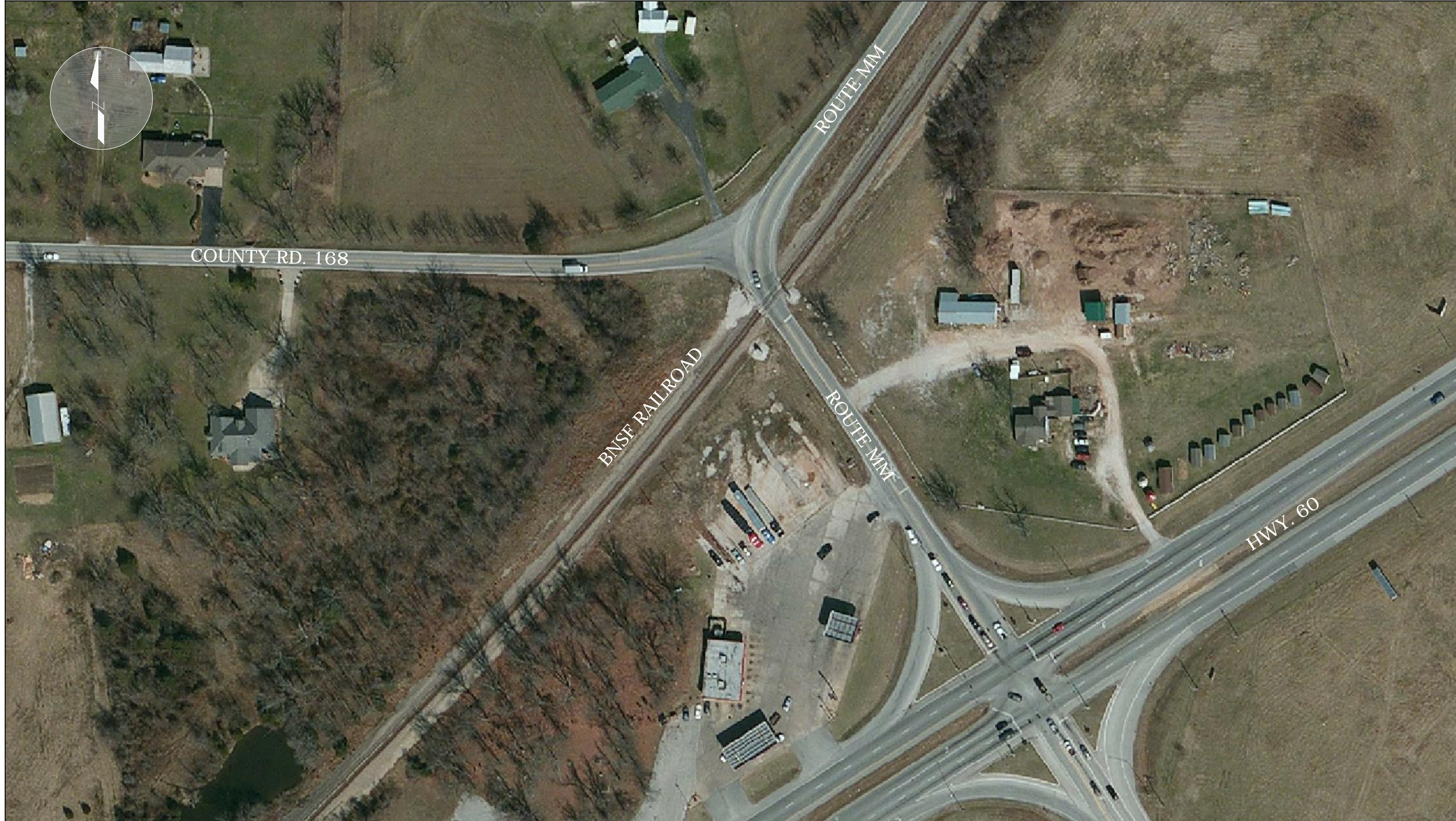
RAIL CROSSING SAFETY STUDY
REPUBLIC, MO - AURORA, MO
Job No. RRP 000S(524)



MoDOT - BNFS RAILROAD (CHEROKEE SUB-DIVISION FROM M.P. 248 TO M.P. 268)								
RRP 000S(524)								
AT-GRADE RAILROAD CROSSING SUMMARY								
MUNICIPALITY	STREET	US DOT #	RR M.P.	MUNICIPALITY	STREET	US DOT #	RR M.P.	
REPUBLIC	Route MM	673274J	248.09	MARIONVILLE	Aloe Road	673298X	261.00	
	Country Road 170	673275R	248.90		County Road 2175	673300W	261.87	
	County Road 93	673276X	249.52		County Road 2176	673301D	262.19	
	MO 174 (Grade Sep.)	673277E	250.44		Lincoln Street	673302K	263.00	
	Hines Street	673278L	250.75		O'Dell Street	673304Y	263.29	
	Hampton Avenue	673279T	251.25		Central Avenue	673305F	264.00	
	Main Street	673280M	251.63		Western Avenue	673306M	264.58	
	West Avenue	673281U	251.93		AURORA	Farm Road 1220	673307U	265.74
	O'Neal Road / Miller Road	673282B	252.24			Farm Road 2200	673308B	265.92
	County Line Road 194	673283H	253.88			Farm Road 1210	673309H	266.78
BILLINGS	Rose Hill Road	673285W	255.1					
	Jefferson Avenue	673289Y	257.03					
	Washington Avenue	673290T	257.15					
	Mt. Vernon Road	673292G	257.73					
	Private Crossing	673293N	258.19					
	Private Crossing	673294V	259.00					
	Vermule Road	673295C	259.59					
	Kastendieck Road	673296J	259.88					
Lambeth Road	673297R	260.19						

ROUTE MM - US DOT #673274J - M.P. 248.09

COMMENTS



MoDOT - BNSF RAILROAD (CHEROKEE SUB-DIVISION FROM M.P. 248 TO M.P. 268)

AT-GRADE RAILROAD INCIDENT SUMMARY

INCIDENTS	INJURY STATUS	DATE
2	Killed	7/28/1986
	Injured	7/20/1998

COUNTY ROAD 170 - US DOT #673275R - M.P. 248.90



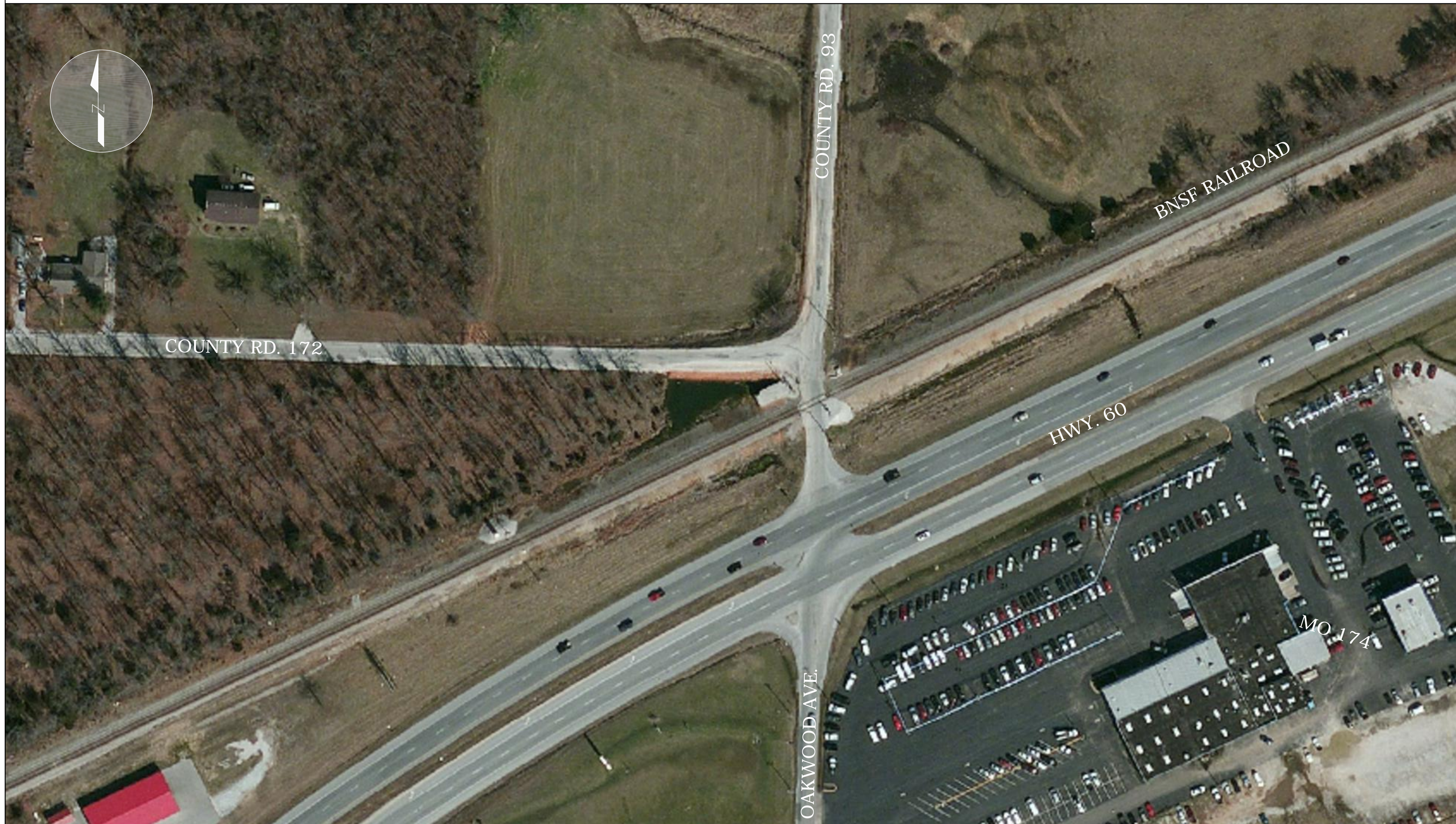
COMMENTS



MoDOT - BNSF RAILROAD (CHEROKEE SUB-DIVISION FROM M.P. 248 TO M.P. 268)
AT-GRADE RAILROAD INCIDENT SUMMARY

INCIDENTS	INJURY STATUS	DATE
4	Uninjured	7/21/1979
	Uninjured	7/14/1994
	Uninjured	12/13/1994
	Uninjured	12/4/1996

COUNTY ROAD 93 - US DOT #673276X - M.P. 249.52



COMMENTS



MoDOT - BNSF RAILROAD (CHEROKEE SUB-DIVISION FROM M.P. 248 TO M.P. 268)		
AT-GRADE RAILROAD INCIDENT SUMMARY		
INCIDENTS	INJURY STATUS	DATE
4	Injured	12/8/1980
	Uninjured	8/21/1986
	Injured	5/12/1990
	Injured	6/8/1990

MO 174 (GRADE SEPARATED) - US DOT #673277E - M.P. 250.44



COMMENTS



MoDOT - BNSF RAILROAD (CHEROKEE SUB-DIVISION FROM M.P. 248 TO M.P. 268)

AT-GRADE RAILROAD INCIDENT SUMMARY

INCIDENTS	INJURY STATUS	DATE
-	-	-

HINES STREET - US DOT #673278L - M.P. 250.75

COMMENTS



MoDOT - BNFS RAILROAD (CHEROKEE SUB-DIVISION FROM M.P. 248 TO M.P. 268)

AT-GRADE RAILROAD INCIDENT SUMMARY

INCIDENTS	INJURY STATUS	DATE
1	Uninjured	1/21/1998

HAMPTON AVENUE - US DOT #673279T - M.P. 251.25



COMMENTS



MoDOT - BNSF RAILROAD (CHEROKEE SUB-DIVISION FROM M.P. 248 TO M.P. 268)

AT-GRADE RAILROAD INCIDENT SUMMARY

INCIDENTS	INJURY STATUS	DATE
1	Uninjured	10/11/1982

MAIN STREET - US DOT #673280M - M.P. 251.63



COMMENTS



MoDOT - BNFS RAILROAD (CHEROKEE SUB-DIVISION FROM M.P. 248 TO M.P. 268)

AT-GRADE RAILROAD INCIDENT SUMMARY

INCIDENTS	INJURY STATUS	DATE
3	Uninjured	6/25/1977
	Injured	3/22/1979
	Uninjured	9/19/2003

WEST AVENUE - US DOT #673281U - M.P. 251.93



COMMENTS



MoDOT - BNSF RAILROAD (CHEROKEE SUB-DIVISION FROM M.P. 248 TO M.P. 268)

AT-GRADE RAILROAD INCIDENT SUMMARY

INCIDENTS	INJURY STATUS	DATE
1	Injured	9/30/1978

O'NEAL ROAD/MILLER ROAD - US DOT #673282B - M.P. 252.24



COMMENTS



MoDOT - BNFS RAILROAD (CHEROKEE SUB-DIVISION FROM M.P. 248 TO M.P. 268) AT-GRADE RAILROAD INCIDENT SUMMARY		
INCIDENTS	INJURY STATUS	DATE
2	Killed - Suicide	1/30/2003
	Uninjured	2/3/1983

COUNTY LINE ROAD 194 - US DOT #673283H - M.P. 253.88



COMMENTS



MoDOT - BNSF RAILROAD (CHEROKEE SUB-DIVISION FROM M.P. 248 TO M.P. 268)		
AT-GRADE RAILROAD INCIDENT SUMMARY		
INCIDENTS	INJURY STATUS	DATE
4	Uninjured	11/17/1997
	Uninjured	2/27/1994
	Uninjured	2/26/1994
	Uninjured	8/26/1978



ROUTE MM AT-GRADE
DOT # - 673274J
M.P. 248.09

CR 170 AT-GRADE
DOT # - 673275R
M.P. 248.90

CR 93 AT-GRADE
DOT # - 673275R
M.P. 249.52

MO 174 GRADE SEP.
DOT # - 673277E
M.P. 250.44

HINES ST. AT-GRADE
DOT # - 673278L
M.P. 250.75

HAMPTON AVE. AT-GRADE
DOT # - 673279T
M.P. 251.25

MAIN ST. AT-GRADE
DOT # - 673280M
M.P. 251.63

O'NEAL RD./MILLER RD. AT-GRADE
DOT # - 673283B
M.P. 252.24

WEST AVE. AT-GRADE
DOT # - 673281U
M.P. 251.93

GREENE COUNTY

CHRISTIAN COUNTY

COUNTY LINE ROAD 194 AT-GRADE
DOT # - 673283H
M.P. 253.88

