

Missouri Department of Transportation

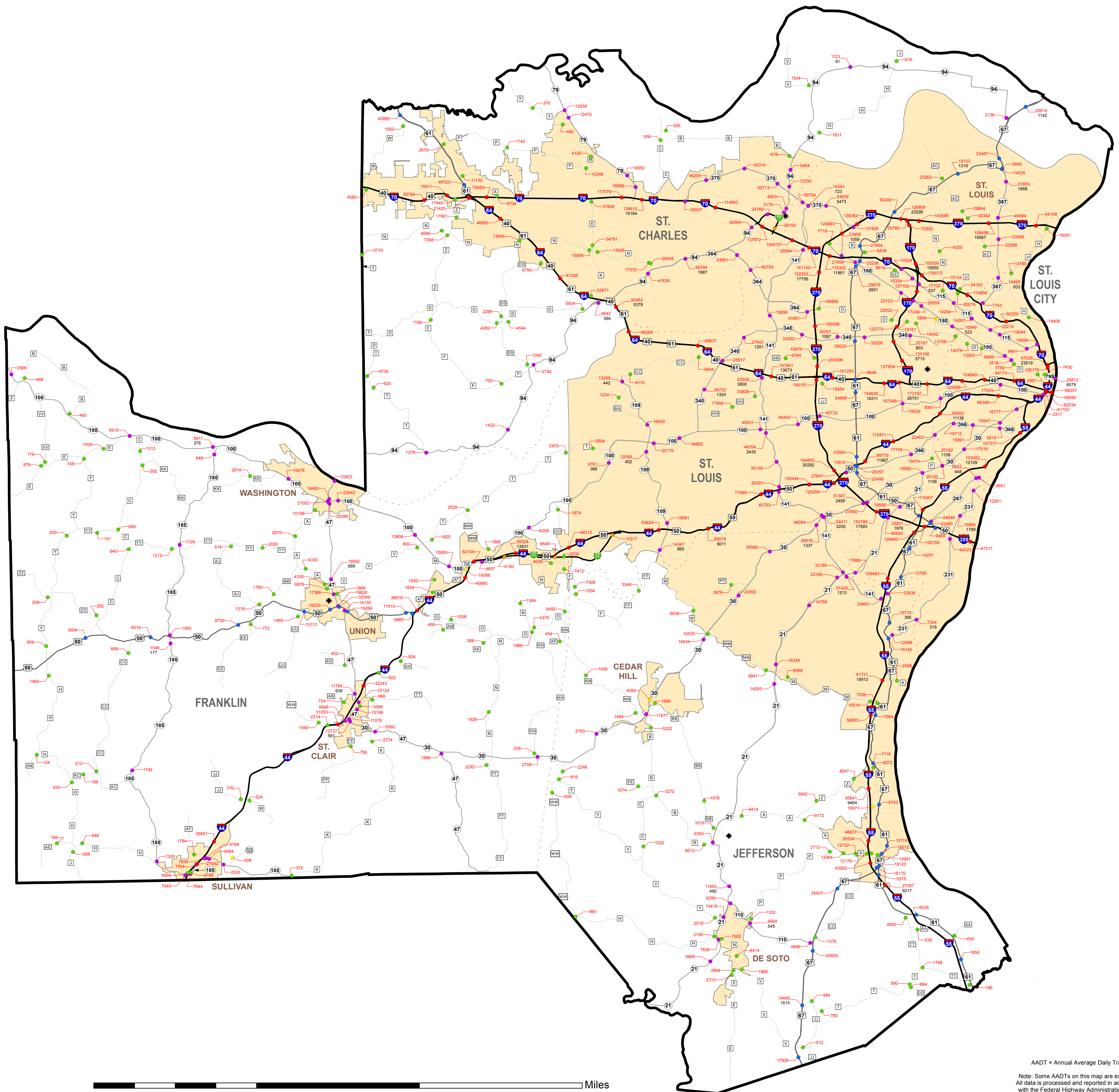
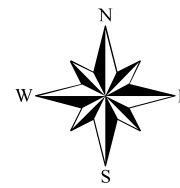
2013

St. Louis District Traffic Volume and Commercial Vehicle Count Map

Prepared by: Missouri Department of Transportation Transportation Planning 105 W. Capitol Ave. Jefferson City, MO 65102 Phone 1-888-ASK-MODOT Fax (573) 526-8052

www.modot.org

This report contains information that is protected from disclosure by federal law, 23 USC Section 409 and the Missouri Open Records Law (Sunshine Act) Section 610.021 FRSMo. Please review MoDOT's policy and procedure manual on the Sunshine Act before releasing any of the information contained herein.



Legend

- Interstate
- US Routes
- MO Routes
- Lettered Routes
- Business Routes and Loops
- Spur Routes and Alternate Routes

23462 Traffic Volume (AADT)
1673 Truck Volume

- ◆ County Seat
- Urban Areas
- Counties



AADT = Annual Average Daily Traffic
Note: Some AADTs on this map are estimates. All data is processed and reported in accordance with the Federal Highway Administration Traffic Monitoring Guide.