

SUNSHINE STREET EAST CORRIDOR

Summary of Improvements



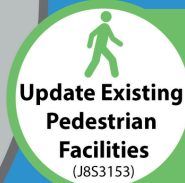
Glenstone Avenue
to
Blackman Road
(2.53 Miles)

\$2,085,000



Blackman Road
to
East of Route 125
(5.5 Miles)

\$1,690,000



Glenstone Avenue
to
Blackman Road
(2.53 Miles)

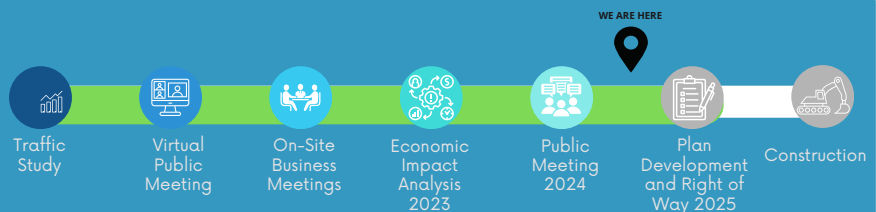
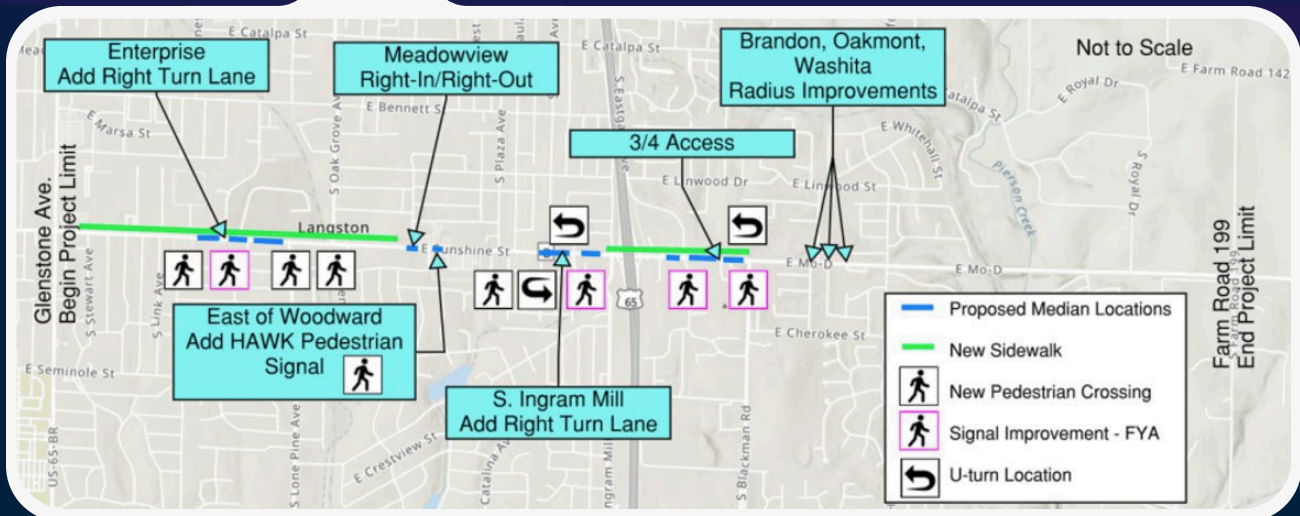
\$5,263,000



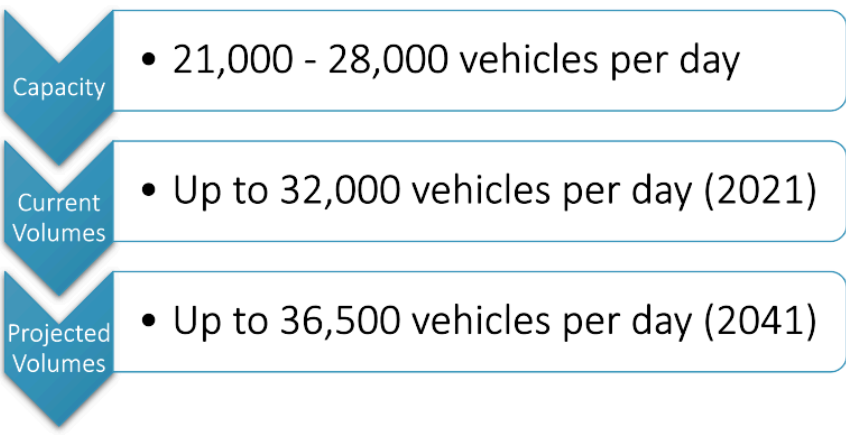
Glenstone Avenue
to
County Road 199
(4.29 Miles)

\$3,896,000

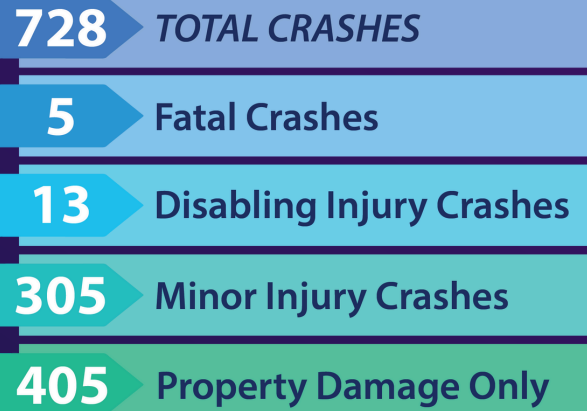
*Includes Preliminary Engineering, Construction Engineering, Right of Way and Construction



Sunshine Safety Operational Study



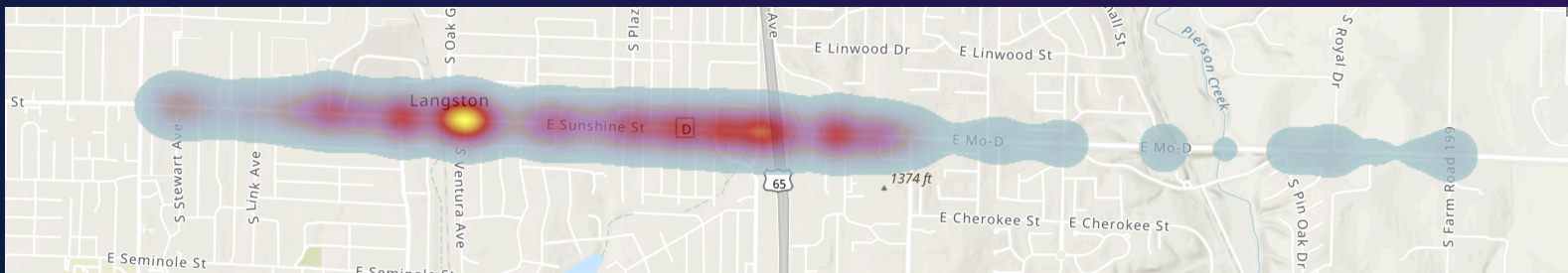
Sunshine Safety Statistics



A SINGLE CRASH CAN TIE UP TRAFFIC AND POTENTIAL CUSTOMERS FOR HOURS.



An additional 297 "Property Damage Only" crashes were reported to Springfield Police Department.
TOTAL CRASHES = 1,025



Economic Impact Study

Business Survey Results

209 Businesses

309 Questionnaires Distributed

98 Property Owners

37 Responses

12% Response Rate

Sunshine Economic Success

Tier 1

No negative economic impacts expected.
No Site Changes Are Needed

Tier 2

No notable economic impacts are expected.
Minimal Site Changes May Be Needed

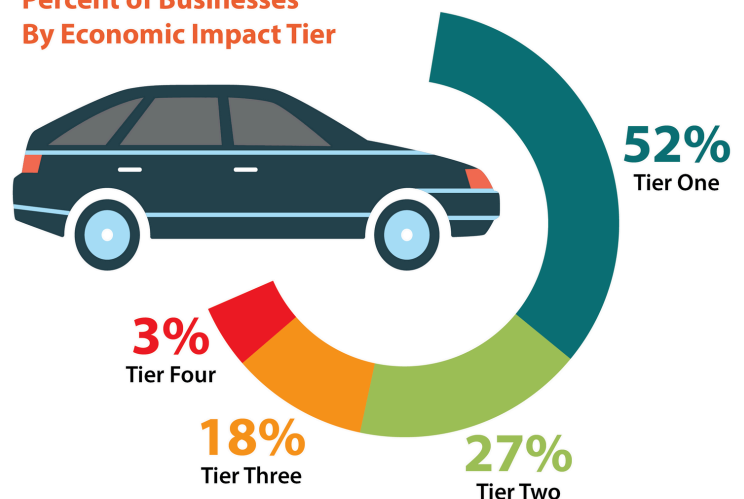
Tier 3

Minor economic impacts could be expected and adjustments by drivers and businesses will likely be necessary.
Minor Site Changes May Be Needed

Tier 4

Considerable economic impacts could be expected pending mitigation actions.
Considerable Site Changes May Be Needed

Percent of Businesses By Economic Impact Tier



NATIONWIDE STUDIES SHOW THAT MANY BUSINESSES WITH GOOD ACCESS MANAGEMENT MAINTAIN THEIR ECONOMIC VITALITY, AND OFTEN EXCEED PAST PERFORMANCE.