



February 27, 2025

To: Plan Holders for Improvements to the
Creve Coeur Airport
St. Louis, Missouri
MoDOT Project No. 25-113P-1

Transmitted herewith is **Addendum No. 3** to the Issued for Bid Contract Documents, Specifications and Plans dated January 30, 2025 for Improvements to the Creve Coeur Airport.

Schedule I
Reconstruct TWY A (TWY A2 to A3)

Schedule II
Rehabilitate RWY, TWY, and Apron (Airfield Marking Maintenance)

Schedule III
Rehabilitate RWY 16/34 (Pavement Joint Maintenance)

Sincerely,

Woolpert, Inc.

Richard F. Gerdeman III, P.E.
Project Manager



Woolpert, Inc.
931 Wildwood Drive, Suite 101
Jefferson City, MO 65109
+1 303.524.3030

**ADDENDUM NO. 3
TO
PROJECT MANUAL, SPECIFICATIONS AND PLANS
FOR IMPROVEMENTS TO THE
CREVE COEUR AIRPORT
ST. LOUIS, MISSOURI
MODOT PROJECT NO. 25-113P-1**

To All Bidders: You are requested to make all changes and/or additions contained in this addendum to the Bidding Documents. Failure to acknowledge this Addendum in Proposal shall result in rejection of bid. Bidders are informed that the above referenced Project Manual, Specifications and Plans are modified as follows as of February 27, 2025:

1. PROJECT MANUAL/SPECIFICATIONS

Project Manual. Part 6: Wage Rates

Revision: Davis Bacon Wage Rates have been updated.

Justification: The Davis Bacon Wage Rates have been updated to provide the latest determination.

Specifications. Item P-620 Runway and Taxiway Marking

Revision: Table 1 Marking Materials has been updated.

Justification: Information in Table 1 Marking Materials has been updated to reflect that glass beads shall not be used in black paint.

Specifications. Item L-125 Installation of Airport Lighting Systems

Revision: Item L-125 Installation of Airport Lighting Systems has been updated.

Justification: The specification has been updated to provide additional information on bid item L-125a Install L-858 Guidance Sign, Size 1, Style 4, Stake Mounted, Complete.

2. PLANS

C706 – (26 of 37) Pavement Marking Plan, STA: 41+00 to STA: 46+00

Revision: Added location and detail drawing for bid item L-125a.

Justification: Added the approximate location and detail drawing to provide additional information on the L-858 guidance sign to be installed under bid item L-125a.

3. QUESTIONS

Question: Would you please be so kind as to confirm that if we are a Prime Contractor for MoDot, we do not need to submit additional documents to qualify as a bidder.

Answer: If a bidder is a Prime Contractor for MoDOT, they will still need to submit all required documentation for the Qualifications of Bidders as part of their bid.

Question: The documents get sent with the bid and not prior, correct?

Answer: That is correct. Unless otherwise noted in the project manual to be submitted at a later date, the documentation is submitted with the bid.

Question: Has the concrete repair spec been changed to mastic?

Answer: The P-501 specification does not allow mastic material to be used for the spall repairs on the project. Spall repairs will need to be completed using materials allowed by the specification.

Question: I was looking through the P-620 specification and noticed that in Table 1. Marking Materials it shows:

Black

Paint: Waterborne Type I 37038 115ft²/gal (2.8m²/l)

Glass Beads: Type I, Gradation A 7lb/gal (0.85kg/l)

Further down in the P-620, b. Reflective media it states:

Glass beads shall not be used in black and green paint.

Just wanted to make you aware.

Answer: An addendum will be issued with an update P-620 specification, which will include a revision to Table 1 to reflect that glass beads shall not be used in black paint.

Question: I'm trying to find more detail on the installation of the guidance sign. Everything I read under modot 125, indicates electric is required? Is this correct, as I don't see an electrical plan? Can you point me in the right direction?

Answer: The guidance sign associated with bid item L-125a is unlit, so electrical will not be required for installation of the sign. An addendum will be issued to include the FAA specification for the sign, Item L-125 Installation of Airport Lighting Systems, for additional information. The addendum will also include an updated plan sheet to show the location of the guidance sign to be installed.

**** END OF ADDENDUM NO. 3 ***

Superseded General Decision Number: MO20240001

State: Missouri

Construction Types: Heavy and Highway

Counties: Missouri Statewide.

HEAVY AND HIGHWAY CONSTRUCTION PROJECTS

Note: Contracts subject to the Davis-Bacon Act are generally required to pay at least the applicable minimum wage rate required under Executive Order 14026 or Executive Order 13658. Please note that these Executive Orders apply to covered contracts entered into by the federal government that are subject to the Davis-Bacon Act itself, but do not apply to contracts subject only to the Davis-Bacon Related Acts, including those set forth at 29 CFR 5.1(a)(1).

| | |
|---|---|
| If the contract is entered into on or after January 30, 2022, or the contract is renewed or extended (e.g., an option is exercised) on or after January 30, 2022: | . Executive Order 14026 generally applies to the contract. . The contractor must pay all covered workers at least \$17.75 per hour (or the applicable wage rate listed on this wage determination, if it is higher) for all hours spent performing on the contract in 2025. |
| If the contract was awarded on or between January 1, 2015 and January 29, 2022, and the contract is not renewed or extended on or after January 30, 2022: | . Executive Order 13658 generally applies to the contract. . The contractor must pay all covered workers at least \$13.30 per hour (or the applicable wage rate listed on this wage determination, if it is higher) for all hours spent performing on that contract in 2025. |

The applicable Executive Order minimum wage rate will be adjusted annually. If this contract is covered by one of the Executive Orders and a classification considered necessary for performance of work on the contract does not appear on this wage determination, the contractor must still submit a conformance request.

Additional information on contractor requirements and worker protections under the Executive Orders is available at <http://www.dol.gov/whd/govcontracts>.

| Modification Number | Publication Date |
|---------------------|------------------|
| 0 | 01/03/2025 |
| 1 | 01/31/2025 |
| 2 | 02/07/2025 |

CARP0002-002 05/01/2024

ST. LOUIS COUNTY AND CITY

| | Rates | Fringes |
|-----------------|----------|---------|
| Carpenters..... | \$ 41.71 | 21.85 |

CARP0005-006 05/01/2024

CASS (Richards-Gebauer AFB ONLY), CLAY, JACKSON, PLATTE AND RAY COUNTIES

| | Rates | Fringes |
|------------------------------|----------|---------|
| Carpenters: | | |
| CARPENTERS & LATHERS..... | \$ 44.63 | 22.40 |
| MILLWRIGHTS & PILEDRIVERS... | \$ 44.63 | 22.40 |

CARP0011-001 05/01/2024

| | Rates | Fringes |
|---|----------|---------|
| Carpenter and Piledriver | | |
| ADAIR, AUDRAIN (West of Hwy 19), BOONE, CALLAWAY, CHARITON, COLE, COOPER, HOWARD, KNOX, LINN, MACON, MILLER, MONITEAU, MONROE, OSAGE, PUTNAM, RANDOLPH, SCHUYLER, SHELBY AND SULLIVAN COUNTIES..... | \$ 35.61 | 22.40 |
| ATCHISON, ANDREW, BATES, CALDWELL, CARROLL, DAVIESS, DEKALB, GENTRY, GRUNDY, HARRISON, HENRY, HOLT, LIVINGSTON, MERCER, NODAWAY, ST. CLAIR, SALINE AND WORTH COUNTIES..... | \$ 34.98 | 22.40 |
| AUDRAIN (East of Hwy.19), RALLS, MARION, LEWIS, CLARK AND SCOTLAND COUNTIES. | \$ 35.61 | 22.40 |
| BARRY, BARTON, CAMDEN, CEDAR, CHRISTIAN, DADE, DALLAS, DOUGLAS, GREENE, HICKORY, JASPER, LACLEDE, LAWRENCE, MCDONALD, NEWTON, OZARK, POLK, STONE, TANEY, VERNON, WEBSTER AND WRIGHT COUNTIES. | \$ 33.25 | 22.40 |
| BENTON, MORGAN AND PETTIS... | \$ 34.98 | 22.40 |
| BOLLINGER, BUTLER, CAPE GIRARDEAU, DUNKLIN, MISSISSIPPI, NEW MADRID, PEMISCOT, PERRY, STE. GENEVIEVE, SCOTT, STODDARD AND WAYNE COUNTIES..... | \$ 35.37 | 22.40 |
| BUCHANAN, CLINTON, JOHNSON AND LAFAYETTE COUNTIES..... | \$ 34.98 | 22.40 |
| CARTER, HOWELL, OREGON AND RIPLEY COUNTIES..... | \$ 34.04 | 22.40 |
| CRAWFORD, DENT, GASCONADE, | | |

| | | |
|--|----------|-------|
| IRON, MADISON, MARIES, MONTGOMERY, PHELPS, PULASKI, REYNOLDS, SHANNON AND TEXAS COUNTIES..... | \$ 35.37 | 22.40 |
| FRANKLIN COUNTY..... | \$ 42.19 | 22.40 |
| JEFFERSON AND ST. CHARLES COUNTIES..... | \$ 42.19 | 22.40 |
| LINCOLN COUNTY..... | \$ 38.04 | 22.40 |
| PIKE, ST. FRANCOIS AND WASHINGTON COUNTIES..... | \$ 36.13 | 22.40 |
| WARREN COUNTY..... | \$ 38.04 | 22.40 |

ELEC0001-002 06/02/2024

BOLLINGER, BUTLER, CAPE GIRARDEAU, CARTER, DUNKLIN, FRANKLIN,
IRON, JEFFERSON, LINCOLN, MADISON, MISSISSIPPI, NEW MADRID,
PEMISCOT, PERRY, REYNOLDS, RIPLEY, ST. CHARLES, ST. FRANCOIS,
ST. LOUIS (City and County), STE. GENEVIEVE, SCOTT, STODDARD,
WARREN, WASHINGTON AND WAYNE COUNTIES

| | Rates | Fringes |
|-------------------|----------|---------|
| Electricians..... | \$ 47.04 | 18.196 |

ELEC0002-001 09/09/2024

ADAIR, AUDRAIN, BOONE, CALLAWAY, CAMDEN, CARTER, CHARITON,
CLARK, COLE, COOPER, CRAWFORD, DENT, FRANKLIN, GASCONADE,
HOWARD, HOWELL, IRON, JEFFERSON, KNOX, LEWIS, LINCON, LINN,
MACON, MARIES, MARION, MILLER, MONITEAU, MONROE, MONTGOMERY,
MORGAN, OREGON, OSAGE, PERRY, PHELPS, PIKE, PULASKI, PUTNAM,
RALLS, RANDOLPH, REYNOLDS, RIPLEY, ST. CHARLES, ST. FRANCOIS,
ST. LOUIS (City and County), STE. GENEVIEVE, SCHUYLER,
SCOTLAND, SHANNON, SHELBY, SULLIVAN, TEXAS, WARREN AND
WASHINGTON COUNTIES

| | Rates | Fringes |
|------------------------------|----------|---------|
| Line Construction: | | |
| Equipment Operator..... | \$ 47.77 | 24.68 |
| Groundman & Truck Driver.... | \$ 36.49 | 20.56 |
| Lineman & Cable Splicer..... | \$ 55.65 | 27.56 |

* ELEC0053-005 01/01/2025

ANDREW, ATCHINSON, BARRY, BARTON, BATES, BENTON, BUCHANAN,
CALDWELL, CARROLL, CASS, CEDAR, CHRISTIAN, CLAY, CLINTON, DADE,
DALLAS, DAVIES, DEKALB, DOUGLAS, GENTRY, GREENE, GRUNDY,
HARRISON, HENRY, HICKORY, HOLT, LAFAYETTE, JACKSON, JASPER,
LACLEDE, LAWRENCE, LIVINGSTON, JOHNSON, MCDONALD, MERCER,
NEWTON, NODAWAY, OZARK, PETTIS, PLATTE, POLK, RAY, SALINE, ST.
CLAIR, STONE, TANEY, VERNON, WEBSTER, WORTH AND WRIGHT COUNTIES

| | Rates | Fringes |
|--------------------------|----------|------------|
| Line Construction: | | |
| Groundman Powderman..... | \$ 37.14 | 1.5%+19.76 |
| Groundman..... | \$ 34.65 | 1.5%+18.93 |
| Lineman Operator..... | \$ 52.45 | 1.5%+26.05 |
| Lineman..... | \$ 56.18 | 1.5%+24.22 |

ELEC0095-001 06/01/2024

BARRY, BARTON, CEDAR, DADE, JASPER, LAWRENCE, MCDONALD, NEWTON,
ST CLAIR, AND VERNON COUNTIES

| | Rates | Fringes |
|---------------------|----------|----------|
| Electricians: | | |
| Cable Splicers..... | \$ 25.40 | 12.19 |
| Electricians..... | \$ 31.09 | 8%+18.04 |

ELEC0124-007 08/28/2023

BATES, BENTON, CARROLL, CASS, CLAY, COOPER, HENRY, JACKSON,
JOHNSON, LAFAYETTE, MORGAN, PETTIS, PLATTE, RAY AND SALINE
COUNTIES:

| | Rates | Fringes |
|-------------------|----------|---------|
| Electricians..... | \$ 47.37 | 25.89 |

ELEC0257-003 03/01/2024

AUDRAIN (Except Cuivre Township), BOONE, CALLAWAY, CAMDEN,
CHARITON, COLE, CRAWFORD, DENT, GASCONADE, HOWARD, MARIES,
MILLER, MONITEAU, OSAGE, PHELPS AND RANDOLPH COUNTIES

| | Rates | Fringes |
|---------------------|----------|---------|
| Electricians: | | |
| Cable Splicers..... | \$ 30.42 | 16.085 |
| Electricians..... | \$ 38.50 | 17.515 |

ELEC0350-002 12/01/2024

ADAIR, AUDRAIN (East of Highway 19), CLARK, KNOX, LEWIS, LINN,
MACON, MARION, MONROE, MONTGOMERY, PIKE, PUTNAM, RALLS,
SCHUYLER, SCOTLAND, SHELBY AND SULLIVAN COUNTIES

| | Rates | Fringes |
|-------------------|----------|---------|
| Electricians..... | \$ 37.60 | 22.145 |

ELEC0453-001 09/01/2023

| | Rates | Fringes |
|---|----------|---------|
| Electricians: | | |
| CHRISITAN, DALLAS, DOUGLAS, GREENE, HICKORY, HOWELL, LACLEDE, OREGON, OZARK, POLK, SHANNON, WEBSTER and WRIGHT COUNTIES.. | \$ 36.08 | 17.91 |
| PULASKI and TEXAS COUNTIES.. | \$ 36.08 | 17.91 |
| STONE and TANEY COUNTIES.... | \$ 26.62 | 17.11 |

ELEC0545-003 06/01/2024

ANDREW, BUCHANAN, CLINTON, DEKALB, ATCHISON, HOLT, MERCER,
GENTRY, HARRISON, DAVIESS, GRUNDY, WORTH, LIVINGSTON, NODAWAY,
AND CALDWELL COUNTIES

| | Rates | Fringes |
|-------------------------|----------|---------|
| Electricians:..... | \$ 39.61 | 20.59 |
| ----- | | |
| ELEC0702-004 01/06/2025 | | |

BOLLINGER, BUTLER, CAPE GIRARDEAU, DUNKLIN, MADISON,
MISSISSIPPI, NEW MADRID, PEMISCOT, SCOTT, STODDARD AND WAYNE
COUNTIES

| | Rates | Fringes |
|---|----------|----------|
| Line Construction: | | |
| Groundman - Class A..... | \$ 38.18 | 29%+8.85 |
| Groundman-Equipment Operator Class II (all other equipment)..... | \$ 46.49 | 29%+8.85 |
| Heavy-Equipment Operator Class I (all crawler type equipment D-4 and larger)... | \$ 52.13 | 29%+8.85 |
| Lineman..... | \$ 74.55 | 29%+8.85 |
| ----- | | |
| ENGI0101-001 05/01/2020 | | |

ANDREW, ATCHISON, BATES, BENTON, BUCHANAN, CALDWELL, CARROLL,
CHARITON, CLINTON, COOPER, DAVIESS, DEKALB, GENTRY, GRUNDY,
HARRISON, HENRY, HOLT, HOWARD, JOHNSON, LAFAYETTE, LINN,
LIVINGSTON, MERCER, NODAWAY, PETTIS, SALINE, SULLIVAN AND WORTH
COUNITIES

| | Rates | Fringes |
|----------------------------|----------|---------|
| Power equipment operators: | | |
| GROUP 1..... | \$ 34.73 | 18.20 |
| GROUP 2..... | \$ 34.33 | 18.20 |
| GROUP 3..... | \$ 32.33 | 18.20 |

POWER EQUIPMENT OPERATORS CLASSIFICATIONS

GROUP 1: Asphalt roller operator, finish; asphalt paver and spreader; asphalt plant operator; auto grader or trimmer or sub-grader; backhoe; blade operator (all types); boilers - 2; booster pump on dredge; bulldozer operator; boring machine (truck or crane mounted); clamshell operator; concrete mixer paver; concrete plant operator; concrete pump operator; crane operator; derrick or derrick trucks; ditching machine; dragline operator; dredge engineman; dredge operator; drill cat with compressor mounted (self-contained) or similar type self-propelled rotary drill (not air tract); drilling or boring machine (rotary-self-propelled); finishing machine operator; greaser; high loader-fork lift-skid loader (all types); hoisting engineer (2 active drums); locomotive operator (standard guage); mechanics and welders (field and plants); mucking machine operator; pile drive operator; pitman crane or boom truck (all types); push cat; quad track; scraper operators (all types); shovel operator; sideboom cats; side discharge spreader; skimmer scoop operators; slip form paver operator (CMI, Rex, Gomeco or equal); la tourneau rooter (all tiller types); tow boat operator; truck crane; wood and log chippers (all types).

GROUP 2: A-frame truck operator; articulated dump truck; back filler operator; boilers (1); chip spreader; churn drill operator; compressor; concrete mixer operator, skip loader; concrete saws (self-propelled); conveyor operator; crusher operator; distributor operator; elevating grader operator; farm tractor (all attachments); fireman rig; float operator; form grade operator; hoisting engine (one drum); maintenance operator; multiple compactor; pavement breaker, self-propelled hydra-hammer (or similar type); paymill operator; power shield; pumps; roller operator (with or without blades); screening and washing plant; self-propelled street broom or sweeper; siphons and jets; straw blower; stump cutting machine; siphons and jets; tank car heater operator (combination boiler and booster); welding machine; vibrating machine operator (not hand held); welding machine.

GROUP 3: (a) Oiler;
 (b) Oiler driver
 (c) Mechanic.

HOURLY PREMIUMS:

THE FOLLOWING CLASSIFICATIONS SHALL RECEIVE (\$.25) ABOVE GROUP 1 RATE: Dragline operator - 3 yds. & over; shovel 3 yds. & over; clamshell 3 yds. & over; Crane, rigs or piledrivers, 100' of boom or over (incl. jib.), hoist - each additional active drum over 2 drums

THE FOLLOWING CLASSIFICATIONS SHALL RECEIVE (\$.50) ABOVE GROUP 1 RATE: Tandem scoop operator; crane, rigs or piledrivers 150' to 200' of boom (incl. jib.)

THE FOLLOWING CLASSIFICATIONS SHALL RECEIVE (\$.75) ABOVE GROUP 1 RATE: Crane rigs, or piledrivers 200 ft. of boom or over (including jib.)

 ENGI0101-005 04/01/2022

CASS, CLAY, JACKSON, PLATTE AND RAY COUNTIES

| | Rates | Fringes |
|----------------------------|----------|---------|
| Power equipment operators: | | |
| GROUP 1..... | \$ 38.42 | 20.44 |
| GROUP 2..... | \$ 37.38 | 20.44 |
| GROUP 3..... | \$ 32.91 | 20.44 |
| GROUP 4..... | \$ 36.26 | 20.44 |

POWER EQUIPMENT OPERATORS CLASSIFICATIONS

GROUP 1: Asphalt roller operator, finish; asphalt paver and spreader; asphalt plant operator; auto grader or trimmer or sub-grader; backhoe; blade operator (all types); boilers-2; booster pump on dredge; boring machine (truck or crane mounted); bulldozer operator; clamshell operator; concrete cleaning decontamination machine operator; concrete mixer paver; concrete plant operator; concrete pump operator; crane operator; derrick or derrick trucks; ditching machine; dragline operator; dredge engineman; dredge operator; drillcat with compressor mounted (self-contained) or similar type self propelled rotary drill (not air tract); drilling or boring machine (rotary - self-propelled); finishing machine operator; greaser; heavy equipment robotics operator/mechanic; horizontal

directional drill operator; horizontal directional drill locator; loader-forklift - skid loader (all types); hoisting engineer (2 active drums); locomotive operator (standard guage); master environmental maintenance mechanic; mechanics and welders (field and plants); mucking machine operator; piledrive operator; pitman crane or boom truck (all types); push cat; quad-track; scraper operators (all types); shovel operator; side discharge spreader; sideboom cats; skimmer scoop operator; slip-form paver (CMI, REX, Gomaco or equal); la tourneau rooter (all tiller types); tow boat operator; truck crane; ultra high perssure waterjet cutting tool system operator/mechanic; vacuum blasting machine operator/mechanic; wood and log chippers (all types)

GROUP 2: ""A"" Frame truck operator; back filler operator; boilers (1); chip spreader; churn drill operator; concrete mixer operator, skip loader; concrete saws (self-propelled); conveyor operator; crusher operator; distributor operator; elevating grader operator; farm tractor (all attachments); fireman rig; float operator; form grader operator; hoisting engine (1 drum); maintenance operator; multiple compactor; pavement breaker, self-propelled hydra- hammer (or similar type); power shield; paymill operator; pumps; siphons and jets; stump cutting machine; tank car heater operator (combination boiler and booster); compressor; roller operator (with or without blades); screening and washing plant; self-propelled street broom or sweeper; straw blower; tank car heater operator (combination boiler and booster); vibrating machine operator (not hand held)

GROUP 3: Oilers

GROUP 4: Oiler Driver (All Types)

FOOTNOTE:

HOURLY PREMIUMS FOLLOWING CLASSIFICATIONS SHALL RECEIVE (\$1.00) ABOVE GROUP 1 RATE:

Clamshells - 3 yd. capacity or over; Cranes or rigs, 80 ft. of boom or over (including jib); Draglines, 3 yd. capacity or over;

Piledrivers 80 ft. of boom or over (including jib);

Shovels & backhoes, 3 yd. capacity or over.

 ENGI0101-022 05/01/2019

BARRY, BARTON, CAMDEN, CEDAR, CHRISTIAN, DADE, DALLAS, DOUGLAS, GREENE, HICKORY, JASPER, LACLEDE, LAWRENCE, MCDONALD, NEWTON, OZARK, POLK, ST. CLAIR, STONE, TANEY, VERNON, WEBSTER AND WRIGHT COUNTIES and CITY OF SPRINGFIELD

| | Rates | Fringes |
|----------------------------|----------|---------|
| Power equipment operators: | | |
| GROUP 1..... | \$ 31.72 | 14.88 |
| GROUP 2..... | \$ 31.37 | 14.88 |
| GROUP 3..... | \$ 31.17 | 14.88 |
| GROUP 4..... | \$ 29.12 | 14.88 |

POWER EQUIPMENT OPERATORS CLASSIFICATIONS

GROUP 1: Asphalt finishing machine & trench widening

spreader; asphalt plant console operator; autograder; automatic slipform paver; backhoe; blade operator - all types; boat operator - tow; boilers-2; central mix concrete plant operator; clamshell operator; concrete mixer paver; crane operator; derrick or derrick trucks; ditching machine; dozer operator; dragline operator; dredge booster pump; dredge engineman; dredge operator; drill cat with compressor mounted on cat; drilling or boring machine rotary self-propelled; highloader; hoisting engine - 2 active drums; launch hammer wheel; locomotive operator; - standard guage; mechanic and welders; mucking machine; off-road trucks; piledriver operator; pitman crane operator; push cat operator; quad trac; scoop operator - all types; shovel operator; sideboom cats; skimmer scoop operators; trenching machine operator; truck crane.

GROUP 2: A-frame; asphalt hot-mix silo; asphalt plant fireman (drum or boiler); asphalt plant man; asphalt plant man; asphalt plant mixer operator; asphalt roller operator; backfiller operator; barber-greene loader; boat operator (bridges and dams); chip spreader; concrete mixer operator - skip loader; concrete plant operator; concrete pump operator; crusher operator; dredge oiler; elevating grader operator; fork lift; greaser-fleet; hoisting engine - 1; locomotive operator - narrow gauge; multiple compactor; pavement breaker; powerbroom - self-propelled; power shield; rooter; side discharge concrete spreader; slip form finishing machine; stumpcutter machine; throttle man; tractor operator (over 50 h.p.); winch truck.

GROUP 3: Boilers - 1; chip spreader (front man); churn drill operator; clef plane operator; concrete saw operator (self-propelled); curb finishing machine; distributor operator; finishing machine operator; flex plane operator; float operator; form grader operator; pugmill operator; roller operator, other than high type asphalt; screening & washing plant operator; siphons & jets; sub-grading machine operator; spreader box operator, self-propelled (not asphalt); tank car heater operator (combination boiler & booster); tractor operator (50 h.p. or less); Ulmac, Ulric or similar spreader; vibrating machine operator, not hand;

GROUP 4: Grade checker; Oiler; Oiler-Driver

HOURLY PREMIUMS:

The following classifications shall receive \$.25 above GROUP 1 rate:

Clamshells - 3 yds. or over; Cranes - Rigs or Piledrivers, 100 ft. of boom or over (including jib); Draglines - 3 yds. or over; Hoists - each additional active drum over 2 drums; Shovels - 3 yds. or over;

The following classifications shall receive \$.50 above GROUP 1 rate:

Tandem scoop operator; Cranes - Rigs or Piledrivers, 150 ft. to 200 ft. of boom (including jib); Tandem scoop.

The following classifications shall receive \$.75 above GROUP 1 rate:

Cranes - Rigs or Piledrivers, 200 ft. of boom or over (including jib.).

FRANKLIN, JEFFERSON, LINCOLN, ST CHARLES, AND WARREN COUNTIES

| | Rates | Fringes |
|----------------------------|----------|---------|
| Power equipment operators: | | |
| GROUP 1..... | \$ 43.46 | 30.22 |
| GROUP 2..... | \$ 43.46 | 30.22 |
| GROUP 3..... | \$ 42.16 | 30.22 |
| GROUP 4..... | \$ 41.72 | 30.22 |

POWER EQUIPMENT OPERATORS CLASSIFICATIONS

GROUP 1: Backhoe, Cable; Backhoe, Hydraulic (2 cu yds bucket and under regardless of attachment, one oiler for 2 or 3, two oilers for 4 through 6); Backhoe, Hydraulic over 2 cu yds; Cableway; Crane, Crawler or Truck; Crane, Hydraulic - Truck or Cruiser mounted, 16 tons and over; Crane, Locomotive; crane with boom including jib over 100 ft from pin to pin; Crane using rock socket tool; Derrick, Steam; Derrick Car and Derrick Boat; Dragline, 7 cu yds and over; Dredge; Gradall, Crawler or tire mounted; Locomotive, Gas, Steam & other powers; Pile Driver, Land or Floating; Scoop, Skimmer; Shovel, Power (Electric, Gas, Steam or other powers); Shovel, Power (7 cu yds and over); Switch Boat; Whirley; Air Tugger with air compressor; Anchor Placing Barge; Asphalt Spreader; Athey Force Feeder Loader, self-propelled; Backfilling Machine; Boat Operator - Push Boat or Tow Boat (job site); Boiler, High Pressure Breaking in Period; Boom Truck, Placing or Erecting; Boring Machine, Footing Foundation; Bullfloat; Cherry Picker; Combination Concrete Hoist and Mixer (such as Mixermobile); Compressor, Two 125 CFM and under; Compressor, Two through Four over 125 CFM; Compressor when operator runs throttle; Concrete Breaker (Truck or Tractor mounted); Concrete Pump (such as Pumpcrete machine); Concrete Saw (self-propelled); Concrete Spreader; Conveyor, Large (not selfpropelled) hoisting or moving brick and concrete into, or into and on floor level, one or both; Crane, Cimbing (such as Linden); Crane, Hydraulic - Rough Terrain, self-propelled; Crane, Hydraulic - Truck or Cruiser mounted - under 16 tons; Drilling machine - Self-powered, used for earth or rock drilling or boring (wagon drills and any hand drills obtaining power from other souces including concrete breakers, jackhammers and Barco equipmnet no engineer required); Elevating Grader; Engine Man, Dredge; Excavator or Powerbelt Machine; Finishing Machine, self- propelled oscillating screed; Forklift; Generators, Two through Six 30 KW or over; Grader, Road with power blade; Greaser; Highlift; Hoist, Concrete and Brick (Brick cages or concrete skips operating or on tower, Towermobile, or similar equipment); Hoist, Three or more drums in use; Hoist, Stack; Hydro-Hammer; Lad-A-Vator, hoisting brick or concrete; Loading Machine such as Barber-Greene; Mechanic on job site

GROUP 2: Air Tugger with plant air; Boiler (for power or heating shell of building or temporary enclosures in connection with construction work); Boiler, Temporary; Compressor, One over 125 CFM; Compressor, truck mounted; Conveyor, Large (not self- propelled); Conveyor, Large (not self- propelled) moving brick and concrete (distributing) on floor level; Curb Finishing Machine; Ditch Paving Machine; Elevator (outside); Endless Chain Hoist; Fireman (as required); Form Grader; Hoist, One Drum regardless of size (except brick or concrete); Lad-A-Vator, other

hoisting; Manlift; Mixer, Asphalt, over 8 cu ft capacity; Mixer, one bag capacity or less; Mixer, without side loader, two bag capacity or more; Mixer, with side loader, regardless of size, not Paver; Mud Jack (where mud jack is used in conjunction with an air compressor, operator shall be paid \$.55 per hour in addition to his basic hourly rate for covering both operations); Pug Mill operator; Pump, Sump - self powered, automatic controlled over 2"; Scissor Lift (used for hoisting); Skid Steer Loader; Sweeper, Street; Tractor, small wheel type 50 HP and under with grader blade and similar equipment; Welding Machine, One over 400 amp; Winch, operating from truck

GROUP 3: Boat operator - outboard motor, job site; Conveyors (such as Con-Vay-It) regardless of how used; Elevator (inside); Heater operator, 2 through 6; Sweeper, Floor

GROUP 4: Crane type

HOURLY PREMIUMS:

Backhoe, Hydraulic 2 cu yds or less without oiler - \$2.00;
 Crane, climbing (such as Linden) - \$.50;
 Crane, Pile Driving and Extracting - \$.50
 Crane with boom (including job) over 100 ft from pin to pin - add \$.01 per foot to maximum of \$4.00);
 Crane, using rock socket tool - \$.50;
 Derrick, diesel, gas or electric hoisting material and erecting steel (150 ft or more above ground) - \$.50;
 Dragline, 7 cu yds and over - \$.50;
 Hoist, Three or more drums in use - \$.50;
 Scoop, Tandem - \$.50;
 Shovel, Power - 7 cu yds and over - \$.50;
 Tractor, Tandem Crawler - \$.50;
 Tunnel, man assigned to work in tunnel or tunnel shaft - \$.50;
 Wrecking, when machines are working on second floor or higher - \$.50

 ENGI0513-006 05/06/2024

ADAIR, AUDRAIN, BOLLINGER, BOONE, BUTLER, CALLAWAY, CAPE GIRARDEAU, CARTER, CLARK, COLE, CRAWFORD, DENT, DUNKLIN, GASCONADE, HOWELL, IRON, KNOX, LEWIS, MACON, MADISON, MARIES, MARION, MILLER, MISSISSIPPI, MONITEAU, MONROE, MONTGOMERY, MORGAN, NEW MADRID, OREGON, OSAGE, PEMISCOT, PERRY, PHELPS, PIKE, PULASKI, PUTNAM, RALLS, RANDOLPH, REYNOLDS, RIPLEY, ST. FRANCOIS, STE. GENEVIEVE, SCHUYLER, SCOTLAND, SCOTT, SHANNON, SHELBY, STODDARD, TEXAS, WASHINGTON, AND WAYNE COUNTIES

| | Rates | Fringes |
|----------------------------|----------|---------|
| Power equipment operators: | | |
| GROUP 1..... | \$ 43.46 | 30.22 |
| GROUP 2..... | \$ 43.46 | 30.22 |
| GROUP 3..... | \$ 42.16 | 30.22 |
| GROUP 4..... | \$ 41.72 | 30.22 |

POWER EQUIPMENT OPERATORS CLASSIFICATIONS

GROUP 1: Asphalt finishing machine & trench widening spreader, asphalt plant console operator; autograder;

automatic slipform paver; back hoe; blade operator - all types; boat operator tow; boiler two; central mix concrete plant operator; clam shell operator; concrete mixer paver; crane operator; derrick or derrick trucks; ditching machine; dozer operator; dragline operator; dredge booster pump; dredge engineman; dredge operator; drill cat with compressor mounted on cat; drilling or boring machine rotary self-propelled; highloader; hoisting engine 2 active drums; launchhammer wheel; locomotive operator standrad guage; mechanics and welders; mucking machine; piledriver operator; pitman crane operator; push cat operator; guad-trac; scoop operator; sideboom cats; skimmer scoop operator; trenching machine operator; truck crane, shovel operator.

GROUP 2: A-Frame; asphalt hot-mix silo; asphalt roller operator asphalt plant fireman (drum or boiler); asphalt plant man; asphalt plant mixer operator; backfiller operator; barber-greene loader; boat operator (bridge & dams); chip spreader; concrete mixer operator skip loader; concrete plant operator; concrete pump operator; dredge oiler; elevating graded operator; fork lift; grease fleet; hoisting engine one; locomotive operator narrow guage; multiple compactor; pavement breaker; powerbroom self-propelled; power shield; rooter; slip-form finishing machine; stumpcutter machine; side discharge concrete spreader; throttleman; tractor operator (over 50 hp); winch truck; asphalt roller operator; crusher operator.

GROUP 3: Spreader box operator, self-propelled not asphalt; tractor operator (50 h.p. or less); boilers one; chip spreader (front man); churn drill operator; compressor over 105 CFM 2-3 pumps 4" & over; 2-3 light plant 7.5 KWA or any combination thereof; clef plane operator; compressor maintenance operator 2 or 3; concrete saw operator (self-propelled); curb finishing mancine; distributor operator; finishing machine operator; flex plane operator; float operator; form grader operator; pugmill operator; riller operator other than high type asphalt; screening & washing plant operator; siphons & jets; subgrading machine operator; tank car heater (combination boiler & booster); ulmac, ulric or similar spreader; vibrating machine operator; hydrobroom.

GROUP 4: Oiler; grout machine; oiler driver; compressor over 105 CFM one; conveyor operator one; maintenance operator; pump 4" & over one.

FOOTNOTE: HOURLY PREMIUMS

Backhoe hydraulic, 2 cu. yds. or under Without oiler - \$2.00
Certified Crane Operator - \$1.50;
Certified Hazardous Material Operator \$1.50;
Crane, climbing (such as Linden) - \$0.50;
Crane, pile driving and extracting - \$0.50;
Crane, with boom (including jib) over 100' from pin to pin add \$0.01 per foot to maximum of \$4.00;
Crane, using rock socket tool - \$0.50;
Derrick, diesel, gas or electric, hoisting material and erecting steel (150' or more above the ground) - \$0.50;
Dragline, 7 cu. yds, and over - \$0.50;
Hoist, three or more drums in use - \$0.50; Scoop, Tandem - \$0.50;
Shovel, power - 7 cu. yds. or more - \$0.50;
Tractor, tandem crawler - \$0.50;

Tunnel, man assigned to work in tunnel or tunnel shaft -
 \$0.50;
 Wrecking, when machine is working on second floor or higher -
 \$0.50;

 ENGI0513-007 05/06/2024

ST. LOUIS CITY AND COUNTY

| | Rates | Fringes |
|----------------------------|----------|---------|
| Power equipment operators: | | |
| GROUP 1..... | \$ 43.46 | 30.22 |
| GROUP 2..... | \$ 43.46 | 30.22 |
| GROUP 3..... | \$ 42.16 | 30.22 |
| GROUP 4..... | \$ 41.72 | 30.22 |

POWER EQUIPMENT OPERATORS CLASSIFICATIONS

GROUP 1: Backhoe, cable or hydraulic; cableway; crane crawler or truck; crane, hydraulic-truck or cruiser mounted 16 tons & over; crane locomotive; derrick, steam; derrick car & derrick boat; dragline; dredge; gradall, crawler or tire mounted; locomotive, gas, steam & other powers; pile driver, land or floating; scoop, skimmer; shovel, power (steam, gas, electric or other powers); switch boat; whirley.

GROUP 2: Air tugger w/air compressor; anchor-placing barge; asphalt spreader; atehy force feeder loader (self-propelled); backfilling machine; backhoe-loader; boat operator-push boat or tow boat (job site); boiler, high pressure breaking in period; boom truck, placing or erecting; boring machine, footing foundation; bull- float; cherry picker; combination concrete hoist & mixer (such as mixer mobile); compressor (when operator runs throttle); concrete breaker (truck or tractor mounted); concrete pump, such as pump-crete machine; concrete saw (self-propelled), concrete spreader; conveyor, large (not self-propelled), hoisting or moving brick and concrete into, or into and on floor level, one or both; crane, hydraulic-rough terrain, self-propelled; crane hydraulic-truck or cruiser mounted-under 16 tons; drilling machines, self-powered use for earth or rock drilling or boring (wagon drills nd any hand drills obtaining power from other sources including concrete breakers, jackhammers and barco equipment-no engineer required); elevating grader; engineman, dredge; excavator or powerbelt machine; finishing machine, self-propelled oscillating screed; forklift; grader, road with power blade; highlift. greaser; hoist, stack, hydro-hammer; loading machine (such as barber-greene); machanic, on job site; mixer, pipe wrapping machines; plant asphalt; plant, concrete producing or ready-mix job site; plant heating-job site; plant mixing-job site; plant power, generating-job site; pumps, two through six self-powered over 2""; pumps, electric submersible, two through six, over 4""; quad-track; roller, asphalt, top or sub-grade; scoop, tractor drawn; spreader box; sub-grader; tie tamper; tractor-crawler, or wheel type with or without power unit, power take-offs and attachments regardless of size; trenching machine; tunnel boring machine; vibrating machine automatic, automatic propelled; welding machines (gasoline or diesel) two through six; well drilling machine

GROUP 3: Conveyor, large (not self-propelled); conveyor, large (not self-propelled) moving brick and concrete distributing) on floor level; mixer two or more mixers of one bag capacity or less; air tugger w/plant air; boiler, for power or heating on construction projects; boiler, temporary; compressor (mounted on truck; curb finishing machine; ditch paving machine; elevator; endless chain hoist; form grader; hoist, one drum regardless of size; lad-a-vator; manlift; mixer, asphalt, over 8 cu. ft. capacity, without side loader, 2 bag capacity or more; mixer, with side loader, regardless of size; pug mill operator; pump, sump-self-powered, automatic controlled over 2" during use in connection with construction work; sweeper, street; welding machine, one over 400 amp.; winch operating from truck; scissor lift (used for hoisting); tractor, small wheel type 50 h.p. & under with grader blade & similar equipment; Oiler on dredge and on truck crane.

GROUP 4: Boat operator-outboard motor (job site); conveyor (such as con-vay-it) regardless of how used; sweeper, floor

HOURLY PREMIUMS:

| | |
|--|--------|
| Backhoe, hydraulic | |
| 2 cu. yds. or under without oiler | \$2.00 |
| Certified Crane Operator | 1.50 |
| Certified Hazardous Material Operator | 1.50 |
| Crane, climbing (such as Linden) | .50 |
| Crane, pile driving and extracting | .50 |
| Crane, with boom (including jib) over 100' (from pin to pin) add \$.01 per foot to maximum of | 4.00 |
| Crane, using rock socket tool | .50 |
| Derrick, diesel, gas or electric, hoisting material and erecting steel (150' or more above ground) | .50 |
| Dragline, 7 cu. yds. and over | .50 |
| Hoist, three (3) or more drums in use | .50 |
| Scoop, Tandem | .50 |
| Shovel, power - 7 cu. yds. or more | .50 |
| Tractor, tandem crawler | .50 |
| Tunnel, man assigned to work in tunnel or tunnel shaft | .50 |
| Wrecking, when machine is working on second floor or higher | .50 |

IRON0010-012 04/01/2024

Rates Fringes

Ironworkers:

ANDREW, BARTON, BENTON,
CAMDEN, CEDAR, CHARITON,
CHRISTIAN, COOPER, DADE,
DALLAS, DAVIESS, DE KALB,
GENTRY, GREENE, GRUNDY,
HARRISON, HICKORY, HOLT,
HOWARD, LACLEDE, LINN,
LIVINGSTON, MERCER,
MONITEAU, MORGAN, NODAWAY,
PETTIS, POLK, PUTNAM,
RANDLOPH, ST. CLAIR,
SULLIVAN, TANEY, VERNON,
WEBSTER, WRIGHT and WORTH
Counties and portions of

ADAIR, BOONE, MACON,
 MILLER and RANDOLPH
 Counties.....\$ 35.00 33.56
 ATCHISON, BATES, BUCHANAN,
 CALDWELL, CARROLL, CASS,
 CLAY, CLINTON, HENRY,
 JACKSON, JOHNSON,
 LAFAYETTE, PETTIS, PLATTE,
 SALINE, AND RAY COUNTIES....\$ 38.00 33.56

 IRON0321-002 08/01/2023

DOUGLAS, HOWELL and OZARK COUNTIES

| | Rates | Fringes |
|-----------------|----------|---------|
| Ironworker..... | \$ 27.00 | 20.96 |

 IRON0396-004 08/07/2024

ST. LOUIS (City and County), ST. CHARLES, JEFFERSON, IRON,
 FRANKLIN, LINCOLN, WARREN, WASHINGTON, ST. FRANCOIS, STE.
 GENEVIEVE, and REYNOLDS Counties; and portions of MADISON,
 PERRY, BOLLINGER, WAYNE, and CARTER Counties

| | Rates | Fringes |
|-----------------|----------|---------|
| Ironworker..... | \$ 41.67 | 31.25 |

 IRON0396-009 08/07/2024

AUDRAIN, CALLAWAY, COLE, CRAWFORD, DENT, GASCONADE, MARIES,
 MONTGOMERY, OSAGE, PHELPS, PIKE, PULASKI, TEXAS and WRIGHT
 Counties; and portions of BOONE, CAMDEN, DOUGLAS, HOWELL,
 LACLEDE, MILLER, MONROE, OREGON, SHANNON and RALLS Counties

| | Rates | Fringes |
|-----------------|----------|---------|
| Ironworker..... | \$ 41.67 | 31.25 |

 IRON0577-005 06/01/2024

ADAIR, CLARK, KNOX, LEWIS, MACON, MARION, MONROE, RALLS,
 SCHUYLER, SCOTLAND, AND SHELBY COUNTIES

| | Rates | Fringes |
|-----------------|----------|---------|
| Ironworker..... | \$ 34.05 | 25.30 |

 IRON0584-004 06/01/2023

BARRY, JASPER, LAWRENCE, MCDONALD, NEWTON AND STONE Counties

| | Rates | Fringes |
|-------------------|----------|---------|
| Ironworkers:..... | \$ 29.00 | 16.20 |

 IRON0782-003 08/01/2023

CAPE GIRARDEAU, MISSISSIPPI, NEW MADRID, SCOTT, & STODDARD
 Counties; and portions of BOLLINGER, BUTLER, CARTER, DUNKLIN,
 MADISON, PEMISCOT, PERRY, RIPLEY, and WAYNE Counties

| | Rates | Fringes |
|---|----------|---------|
| Ironworkers: | | |
| Locks, Dams, Bridges and other major work on the Mississippi and Ohio River only..... | \$ 38.77 | 29.51 |
| All Other Work..... | \$ 33.47 | 24.12 |

LAB00042-003 03/01/2023

ST. LOUIS (City and County)

| | Rates | Fringes |
|----------------------|----------|---------|
| LABORER | | |
| Plumber Laborer..... | \$ 36.65 | 17.12 |

LAB00042-005 03/01/2023

ST. LOUIS (City and County)

| | Rates | Fringes |
|---------------------------|----------|---------|
| LABORER | | |
| Dynamiter, Powderman..... | \$ 36.65 | 17.12 |
| Laborers, Flaggers..... | \$ 36.65 | 17.12 |
| Wrecking..... | \$ 36.65 | 17.12 |

LAB00110-005 05/01/2024

Jefferson and Washington Counties

| | Rates | Fringes |
|-----------------------------|----------|---------|
| LABORER (Jefferson County) | | |
| GROUP 1..... | \$ 38.24 | 15.55 |
| GROUP 2..... | \$ 38.24 | 15.55 |
| LABORER (Washington County) | | |
| GROUP 1..... | \$ 35.13 | 15.55 |
| GROUP 2..... | \$ 35.12 | 15.55 |

LABORERS CLASSIFICATIONS

GROUP 1 - General laborer-flagman, carpenter tenders; salamander Tenders; Dump Man; Ticket Takers; loading trucks under bins, hoppers, and conveyors; track man; cement handler; dump man on earth fill; georgie buggy man; material batch hopper man; spreader on asphalt machine; material mixer man (except on manholes); coffer dams; riprap pavers rock, block or brick; scaffolds over ten feet not self-supported from ground up; skip man on concrete paving; wire mesh setters on concrete paving; all work in connection with sewer, water, gas, gasoling, oil, drainage pipe, conduit pipe, tile and duct lines and all other pipe lines; power tool operator; all work in connection with hydraulic or general dredging operations; form setters, puddlers (paving only); straw blower nozzle man; asphalt plant platform man; chuck tender; crusher feeder; men handling creosote ties or creosote materials; men working with and handling epoxy material; topper of standing trees; feeder man on wood pulverizers, board and willow mat weavers and cabelee tiers on river work; deck hands; pile

dike and revetment work; all laborers working on underground tunnels less than 25 ft. where compressed air is not used; abutment and pier hole men working six (6) ft. or more below ground; men working in coffer dams for bridge piers and footing in the river; barco tamper; jackson or any other similar tamp; cutting torch man; liners, curb, gutters, ditch lines; hot mastic kettlemen; hot tar applicator; hand blade operator; mortar men or brick or block manholes; rubbing concrete, air tool operator under 65 lbs.; caulker and lead man; chain or concrete saw under 15 h.p.; signal Gan; Guard rail and sign erectors.

GROUP 2 - Skilled laborers - Vibrator man; asphalt raker; head pipe layer on sewer work; batterboard man on pipe and ditch work; cliff scalers working from bosun's chairs; scaffolds or platforms on dams or power plants over 10 ft. high; air tool operator over 65 lbs.; stringline man on concrete paving; sandblast man; laser beam man; wagon drill; churn drill; air track drill and all other similar type drills, gunite nozzle man; pressure grout man; screed man on asphalt; concrete saw 15 h.p. and over; grade checker; strigline man on electronic grade control; manhole builder; dynamite man; powder man; welder; tunnel man; waterblaster - 1000 psi or over; asbestos and/or hazardous waste removal and/or disposal

 LAB00579-005 05/01/2023

| | Rates | Fringes |
|--|----------|---------|
| LABORER (ANDREW, ATCHISON, BUCHANAN, CALDWELL, CLINTON, DAVISS, DEKALB, GENTRY, GRUNDY, HARRISON, HOLT, LIVINGSTON, MERCER, NODAWAY and WORTH COUNTIES.) | | |
| GROUP 1..... | \$ 29.04 | 16.59 |
| GROUP 2..... | \$ 29.39 | 16.59 |
| LABORER (BARRY, BARTON, BATES, BENTON, CAMDEN, CARROLL, CEDAR, CHRISTIAN, DADE, DALLAS, DOUGLAS, GREENE, HENRY. HICKORY, JASPER, JOHNSON, LACLEDE, LAWRENCE, MCDONALD, MORGAN, NEWTON, OZARK, PETTIS, POLK, ST.CLAIR, SALINE, STONE, TANEY, VERNON, WEBSTER and WRIGHT COUNTIES) | | |
| GROUP 1..... | \$ 28.23 | 15.60 |
| GROUP 2..... | \$ 28.78 | 15.60 |
| LABORER (LAFAYETTE COUNTY) | | |
| GROUP 1..... | \$ 29.78 | 15.85 |
| GROUP 2..... | \$ 30.13 | 15.85 |

LABORERS CLASSIFICATIONS

GROUP 1: General Laborers - Carpenter tenders; salamander tenders; loading trucks under bins; hoppers & conveyors; track men & all other general laborers; air tool operator; cement handler-bulk or sack; dump man on earth fill; georgie buggy man; material batch hopper man; material mixer man (except on manholes); coffer dams; riprap pavers

- rock, block or brick; signal man; scaffolds over ten feet not self-supported from ground up; skipman on concrete paving; wire mesh setters on concrete paving; all work in connection with sewer, water, gas, gasoline, oil drainage pipe, conduit pipe, tile and duct lines and all other pipe lines; power tool operator, all work in connection with hydraulic or general dredging operations; puddlers (paving only); straw blower nozzleman; asphalt plant platform man; chuck tender; crusher feeder; men handling creosote ties or creosote materials; men working with and handling epoxy material or materials (where special protection is required); rubbing concrete; topper of standing trees; batter board man on pipe and ditch work; feeder man on wood pulverizers; board and willow mat weavers and cable tiers on river work; deck hands; pile dike and revetment work; all laborers working on underground tunnels less than 25 feet where compressed air is not used; abutment and pier hole men working six (6) feet or more below ground; men working in coffer dams for bridge piers and footings in the river; ditchliners; pressure groutmen; caulker; chain or concrete saw; cliffscalers working from scaffolds, bosuns' chairs or platforms on dams or power plants over (10) feet above ground; mortarmen on brick or block manholes; toxic and hazardous waste work.

GROUP 2: Skilled Laborers - Head pipe layer on sewer work; laser beam man; Jackson or any other similar tamp; cutting torch man; form setters; liners and stringline men on concrete paving, curb, gutters; hot mastic kettleman; hot tar applicator; sandblasting and gunite nozzle men; air tool operator in tunnels; screed man on asphalt machine; asphalt raker; barco tamper; churn drills; air track drills and all similar drills; vibrator man; stringline man for electronic grade control; manhole builders-brick or block; dynamite and powder men; grade checker.

 LAB00660-004 05/01/2024

Clark, Knox, Lewis, Marion, Pike, Ralls, Scotland, Shelby Counties

| | Rates | Fringes |
|--------------|----------|---------|
| LABORER | | |
| GROUP 1..... | \$ 35.13 | 15.55 |
| GROUP 2..... | \$ 35.13 | 15.55 |

LABORERS CLASSIFICATIONS

GROUP 1 - General laborer-flagman, carpenter tenders; salamander Tenders; Dump Man; Ticket Takers; loading trucks under bins, hoppers, and conveyors; track man; cement handler; dump man on earth fill; georgie buggy man; material batch hopper man; spreader on asphalt machine; material mixer man (except on manholes); coffer dams; riprap pavers rock, block or brick; scaffolds over ten feet not self-supported from ground up; skip man on concrete paving; wire mesh setters on concrete paving; all work in connection with sewer, water, gas, gasoling, oil, drainage pipe, conduit pipe, tile and duct lines and all other pipe lines; power tool operator; all work in connection with hydraulic or general dredging operations; form setters, puddlers (paving only); straw blower nozzleman; asphalt

plant platform man; chuck tender; crusher feeder; men handling creosote ties or creosote materials; men working with and handling epoxy material; topper of standing trees; feeder man on wood pulverizers, board and willow mat weavers and cabelee tiers on river work; deck hands; pile dike and revetment work; all laborers working on underground tunnels less than 25 ft. where compressed air is not used; abutement and pier hole men working six (6) ft. or more below ground; men working in coffer dams for bridge piers and footing in the river; barco tamper; jackson or any other similar tamp; cutting torch man; liners, curb, gutters, ditch lines; hot mastic kettlemen; hot tar applicator; hand blade operator; mortar men or brick or block manholes; rubbing concrete, air tool operator under 65 lbs.; caulker and lead man; chain or concrete saw under 15 h.p.; signal Gan; Guard rail and sign erectors.

GROUP 2 - Skilled laborers - Vibrator man; asphalt raker; head pipe layer on sewer work; batterboard man on pipe and ditch work; cliff scalers working from bosun's chairs; scaffolds or platforms on dams or power plants over 10 ft. high; air tool operator over 65 lbs.; stringline man on concrete paving; sandblast man; laser beam man; wagon drill; churn drill; air track drill and all other similar type drills, gunite nozzle man; pressure grout man; screed man on asphalt; concrete saw 15 h.p. and over; grade checker; strigline man on electronic grade control; manhole builder; dynamite man; powder man; welder; tunnel man; waterblaster - 1000 psi or over; asbestos and/or hazardous waste removal and/or disposal

LAB00660-006 03/04/2024

Lincoln, Montgomery, St Charles and Warren Counties

| | Rates | Fringes |
|----------------------------------|----------|---------|
| LABORER (Common or General)..... | \$ 36.91 | 15.62 |
| Lincoln, Monntomery, and | | |
| Warrner Counties..... | \$ 37.69 | 15.97 |
| St. Charles County..... | \$ 39.11 | 15.97 |

LAB00662-001 05/01/2024

Callaway, Cole, Miller and Moniteau Counties

| | Rates | Fringes |
|--------------|----------|---------|
| LABORER | | |
| GROUP 1..... | \$ 38.24 | 15.55 |
| GROUP 2..... | \$ 38.24 | 15.55 |

LABORERS CLASSIFICATIONS

GROUP 1 - General laborer-flagman, carpenter tenders; salamander Tenders; Dump Man; Ticket Takers; loading trucks under bins, hoppers, and conveyors; track man; cement handler; dump man on earth fill; georgie buggy man; material batch hopper man; spreader on asphalt machine; material mixer man (except on manholes); coffer dams; riprap pavers rock, block or brick; scaffolds over ten feet not self-supported from ground up; skip man on concrete paving; wire mesh setters on concrete paving; all work in

connection with sewer, water, gas, gasoling, oil, drainage pipe, conduit pipe, tile and duct lines and all other pipe lines; power tool operator; all work in connection with hydraulic or general dredging operations; form setters, puddlers (paving only); straw blower nozzleman; asphalt plant platform man; chuck tender; crusher feeder; men handling creosote ties or creosote materials; men working with and handling epoxy material; topper of standing trees; feeder man on wood pulverizers, board and willow mat weavers and cabelee tiers on river work; deck hands; pile dike and revetment work; all laborers working on underground tunnels less than 25 ft. where compressed air is not used; abutment and pier hole men working six (6) ft. or more below ground; men working in coffer dams for bridge piers and footing in the river; barco tamper; jackson or any other similar tamp; cutting torch man; liners, curb, gutters, ditch lines; hot mastic kettlemen; hot tar applicator; hand blade operator; mortar men or brick or block manholes; rubbing concrete, air tool operator under 65 lbs.; caulker and lead man; chain or concrete saw under 15 h.p.; signal Gan; Guard rail and sign erectors.

GROUP 2 - Skilled laborers - Vibrator man; asphalt raker; head pipe layer on sewer work; batterboard man on pipe and ditch work; cliff scalers working from bosun's chairs; scaffolds or platforms on dams or power plants over 10 ft. high; air tool operator over 65 lbs.; stringline man on concrete paving; sandblast man; laser beam man; wagon drill; churn drill; air track drill and all other similar type drills, gunite nozzle man; pressure grout man; screed man on asphalt; concrete saw 15 h.p. and over; grade checker; strigline man on electronic grade control; manhole builder; dynamite man; powder man; welder; tunnel man; waterblaster - 1000 psi or over; asbestos and/or hazardous waste removal and/or disposal

LAB00663-002 04/01/2024

CASS, CLAY, JACKSON, PLATTE AND RAY COUNTIES

| | Rates | Fringes |
|--------------|----------|---------|
| LABORER | | |
| GROUP 1..... | \$ 35.24 | 15.57 |
| GROUP 2..... | \$ 36.45 | 15.57 |

LABORERS CLASSIFICATIONS

GROUP 1: General laborers, Carpenter tenders, salamander tenders, loading trucks under bins, hoppers and conveyors, track men and all other general laborers, air tool operator, cement handler (bulk or sack), chain or concrete saw, deck hands, dump man on earth fill, Georgie Buggies man, material batch hopper man, scale man, material mixer man (except on manholes), coffer dams, abutments and pier hole men working below ground, riprap pavers rock, black or brick, signal man, scaffolds over ten feet not self-supported from ground up, skipman on concrete paving, wire mesh setters on concrete paving, all work in connection with sewer, water, gas, gasoling, oil, drainage pipe, conduit pipe, tile and duct lines and all other pipelines, power tool operator, all work in connection with hydraulic or general dredging operations, straw blower

nozzleman, asphalt plant platform man, chuck tender, crusher feeder, men handling creosote ties on creosote materials, men working with and handling epoxy material or materials (where special protection is required), topper of standing trees, batter board man on pipe and ditch work, feeder man on wood pulverizers, board and willow mat weavers and cable tiers on river work, deck hands, pile dike and revetment work, all laborers working on underground tunnels less than 25 feet where compressed air is not used, abutment and pier hole men working six (6) feet or more below ground, men working in coffer dams for bridge piers and footings in the river, ditchliners, pressure groutmen, caulker and chain or concrete saw, cliffscalers working from scaffolds, bosuns' chairs or platforms on dams or power plants over (10) feet above ground, mortarmen on brick or block manholes, signal man.

GROUP 2: Skilled Laborer - spreader or screed man on asphalt machine, asphalt raker, grade checker, vibrator man, concrete saw over 5 hp., laser beam man, barco tamper, jackson or any other similar tamp, wagon driller, churn drills, air track drills and other similar drills, cutting torch man, form setters, liners and stringline men on concrete paving, curb, gutters and etc., hot mastic kettleman, hot tar applicator, hand blade operators, mortar men on brick or block manholes, sand blasting and gunnite nozzle men, rubbing concrete, air tool operator in tunnels, head pipe layer on sewer work, manhole builder (brick or block), dynamite and powder men.

 LAB00840-011 05/01/2024

Crawford, Dent, Franklin, Gasconade, Howell, Maries, Oregon, Osage, Phelps, Pulaski, Shannon and Texas Counties

| | Rates | Fringes |
|---|----------|---------|
| LABORER (Crawford, Dent, Gasconade, Howell, Maries, Oregon, Osage, Phelps, Pulaski, Shannon and Texas Counties) | | |
| GROUP 1..... | \$ 35.13 | 15.55 |
| GROUP 2..... | \$ 35.13 | 15.55 |
| LABORER (Franklin County) | | |
| GROUP 1..... | \$ 38.19 | 15.55 |
| GROUP 2..... | \$ 38.19 | 15.55 |

LABORERS CLASSIFICATIONS

GROUP 1 - General laborer-flagman, carpenter tenders; salamander Tenders; Dump Man; Ticket Takers; loading trucks under bins, hoppers, and conveyors; track man; cement handler; dump man on earth fill; georgie buggy man; material batch hopper man; spreader on asphalt machine; material mixer man (except on manholes); coffer dams; riprap pavers rock, block or brick; scaffolds over ten feet not self-supported from ground up; skip man on concrete paving; wire mesh setters on concrete paving; all work in connection with sewer, water, gas, gasoling, oil, drainage pipe, conduit pipe, tile and duct lines and all other pipe lines; power tool operator; all work in connection with hydraulic or general dredging operations; form setters,

puddlers (paving only); straw blower nozzle man; asphalt plant platform man; chuck tender; crusher feeder; men handling creosote ties or creosote materials; men working with and handling epoxy material; topper of standing trees; feeder man on wood pulverizers, board and willow mat weavers and cabelee tiers on river work; deck hands; pile dike and revetment work; all laborers working on underground tunnels less than 25 ft. where compressed air is not used; abutment and pier hole men working six (6) ft. or more below ground; men working in coffer dams for bridge piers and footing in the river; barco tamper; jackson or any other similar tamp; cutting torch man; liners, curb, gutters, ditch lines; hot mastic kettlemen; hot tar applicator; hand blade operator; mortar men or brick or block manholes; rubbing concrete, air tool operator under 65 lbs.; caulker and lead man; chain or concrete saw under 15 h.p.; signal Gan; Guard rail and sign erectors.

GROUP 2 - Skilled laborers - Vibrator man; asphalt raker; head pipe layer on sewer work; batterboard man on pipe and ditch work; cliff scalers working from bosun's chairs; scaffolds or platforms on dams or power plants over 10 ft. high; air tool operator over 65 lbs.; stringline man on concrete paving; sandblast man; laser beam man; wagon drill; churn drill; air track drill and all other similar type drills, gunite nozzle man; pressure grout man; screed man on asphalt; concrete saw 15 h.p. and over; grade checker; strigline man on electronic grade control; manhole builder; dynamite man; powder man; welder; tunnel man; waterblaster - 1000 psi or over; asbestos and/or hazardous waste removal and/or disposal

 LAB00955-012 05/01/2024

Adair, Audrain, Boone, Chariton, Cooper, Howard, Linn, Macon, Monroe, Putnam, Randolph, Schuyler and Sullivan Counties

| | Rates | Fringes |
|--------------|----------|---------|
| LABORER | | |
| GROUP 1..... | \$ 35.13 | 15.55 |
| GROUP 2..... | \$ 35.13 | 15.55 |

LABORERS CLASSIFICATIONS

GROUP 1 - General laborer-flagman, carpenter tenders; salamander Tenders; Dump Man; Ticket Takers; loading trucks under bins, hoppers, and conveyors; track man; cement handler; dump man on earth fill; georgie buggy man; material batch hopper man; spreader on asphalt machine; material mixer man (except on manholes); coffer dams; riprap pavers rock, block or brick; scaffolds over ten feet not self-supported from ground up; skip man on concrete paving; wire mesh setters on concrete paving; all work in connection with sewer, water, gas, gasoling, oil, drainage pipe, conduit pipe, tile and duct lines and all other pipe lines; power tool operator; all work in connection with hydraulic or general dredging operations; form setters, puddlers (paving only); straw blower nozzle man; asphalt plant platform man; chuck tender; crusher feeder; men handling creosote ties or creosote materials; men working with and handling epoxy material; topper of standing trees;

feeder man on wood pulverizers, board and willow mat weavers and cabelee tiers on river work; deck hands; pile dike and revetment work; all laborers working on underground tunnels less than 25 ft. where compressed air is not used; abutement and pier hole men working six (6) ft. or more below ground; men working in coffer dams for bridge piers and footing in the river; barco tamper; jackson or any other similar tamp; cutting torch man; liners, curb, gutters, ditch lines; hot mastic kettlemen; hot tar applicator; hand blade operator; mortar men or brick or block manholes; rubbing concrete, air tool operator under 65 lbs.; caulker and lead man; chain or concrete saw under 15 h.p.; signal Gan; Guard rail and sign erectors.

GROUP 2 - Skilled laborers - Vibrator man; asphalt raker; head pipe layer on sewer work; batterboard man on pipe and ditch work; cliff scalers working from bosun's chairs; scaffolds or platforms on dams or power plants over 10 ft. high; air tool operator over 65 lbs.; stringline man on concrete paving; sandblast man; laser beam man; wagon drill; churn drill; air track drill and all other similar type drills, gunite nozzle man; pressure grout man; screed man on asphalt; concrete saw 15 h.p. and over; grade checker; strigline man on electronic grade control; manhole builder; dynamite man; powder man; welder; tunnel man; waterblaster - 1000 psi or over; asbestos and/or hazardous waste removal and/or disposal

 LAB01104-005 05/01/2024

Bollinger, Butler, Cape Girardeau, Carter, Dunklin, Iron, Madison, Mississippi, New Madrid, Pemiscot, Perry, Reynolds, Ripley, Scott, St Francois, Ste Genevieve, Stoddard and Wayne Counties

| | Rates | Fringes |
|--------------|----------|---------|
| LABORER | | |
| GROUP 1..... | \$ 35.13 | 15.55 |
| GROUP 2..... | \$ 35.13 | 15.55 |

LABORERS CLASSIFICATIONS

GROUP 1 - General laborer-flagman, carpenter tenders; salamander Tenders; Dump Man; Ticket Takers; loading trucks under bins, hoppers, and conveyors; track man; cement handler; dump man on earth fill; georgie buggy man; material batch hopper man; spreader on asphalt machine; material mixer man (except on manholes); coffer dams; riprap pavers rock, block or brick; scaffolds over ten feet not self-supported from ground up; skip man on concrete paving; wire mesh setters on concrete paving; all work in connection with sewer, water, gas, gasoling, oil, drainage pipe, conduit pipe, tile and duct lines and all other pipe lines; power tool operator; all work in connection with hydraulic or general dredging operations; form setters, puddlers (paving only); straw blower nozzle man; asphalt plant platform man; chuck tender; crusher feeder; men handling creosote ties or creosote materials; men working with and handling epoxy material; topser of standing trees; feeder man on wood pulverizers, board and willow mat weavers and cabelee tiers on river work; deck hands; pile

dike and revetment work; all laborers working on underground tunnels less than 25 ft. where compressed air is not used; abutment and pier hole men working six (6) ft. or more below ground; men working in coffer dams for bridge piers and footing in the river; barco tamper; jackson or any other similar tamp; cutting torch man; liners, curb, gutters, ditch lines; hot mastic kettlemen; hot tar applicator; hand blade operator; mortar men or brick or block manholes; rubbing concrete, air tool operator under 65 lbs.; caulker and lead man; chain or concrete saw under 15 h.p.; signal Gan; Guard rail and sign erectors.

GROUP 2 - Skilled laborers - Vibrator man; asphalt raker; head pipe layer on sewer work; batterboard man on pipe and ditch work; cliff scalers working from bosun's chairs; scaffolds or platforms on dams or power plants over 10 ft. high; air tool operator over 65 lbs.; stringline man on concrete paving; sandblast man; laser beam man; wagon drill; churn drill; air track drill and all other similar type drills, gunite nozzle man; pressure grout man; screed man on asphalt; concrete saw 15 h.p. and over; grade checker; strigline man on electronic grade control; manhole builder; dynamite man; powder man; welder; tunnel man; waterblaster - 1000 psi or over; asbestos and/or hazardous waste removal and/or disposal

 PAIN0002-002 09/01/2007

CLARK, FRANKLIN, JEFFERSON, LEWIS, LINCOLN, MARION, PIKE, RALLS, ST. CHARLES, ST. LOUIS (CITY & COUNTY), AND WARREN COUNTIES

| | Rates | Fringes |
|--|----------|---------|
| Painters: | | |
| Brush and Roller; Taper..... | \$ 28.61 | 10.24 |
| High work over 60 feet..... | \$ 29.11 | 10.24 |
| Lead Abatement..... | \$ 29.36 | 10.24 |
| Pressure Roller; High work under 60 ft..... | \$ 28.86 | 10.24 |
| Spray & Abrasive Blasting; Water Blasting (Over 5000 PSI)..... | \$ 30.61 | 10.24 |
| Taper (Ames Tools & Bazooka)..... | \$ 30.21 | 10.24 |

 PAIN0002-006 04/01/2023

ADAIR, AUDRAIN, BOONE, CALLAWAY, CHARITON, COLE, GASCONADE, HOWARD, KNOX, LINN, MACON, MONROE, MONTGOMERY, OSAGE, PUTNAM, RANDOLPH, SCHUYLER, SCOTLAND, SHELBY AND SULLIVAN COUNTIES and the City of Booneville.

| | Rates | Fringes |
|--|----------|---------|
| Painters: | | |
| Bridges, Dams, Locks or Powerhouses..... | \$ 28.49 | 15.03 |
| Brush and Roll; Taping, Paperhanging..... | \$ 26.49 | 15.03 |
| Epoxy or Any Two Part | | |

| | | |
|---|----------|-------|
| Coating; Sandblasting; Stage or other Aerial Work - Platforms over 50 feet high; Lead Abatement..... | \$ 27.49 | 15.03 |
| Spray; Structural Steel (over 50 feet)..... | \$ 27.49 | 15.03 |
| Tapers using Ames or Comparable Tools..... | \$ 27.24 | 15.03 |

PAIN0003-004 04/01/2019

CASS, CLAY, CLINTON, JACKSON, JOHNSON, LAFAYETTE, PLATTE & RAY
COUNTIES

Rates Fringes

Painters:

| | | |
|---|----------|-------|
| Bridgeman; Lead Abatement; Sandblast; Storage Bin & Tanks..... | \$ 33.41 | 17.76 |
| Brush & Roller..... | \$ 30.54 | 17.76 |
| Drywall..... | \$ 31.74 | 17.76 |
| Paper Hanger..... | \$ 31.04 | 17.76 |
| Stageman; Beltman; Steelman; Elevator Shaft; Bazooka, Boxes and Power Sander; Sprayman; Dipping... | \$ 32.41 | 17.76 |
| Steeplejack..... | \$ 36.98 | 17.76 |

PAIN0003-011 04/01/2019

BATES, BENTON, CALDWELL, CARROLL, COOPER, DAVIESS, GRUNDY,
HARRISON, HENRY, LIVINGSTON, MERCER, MONITEAU, MORGAN, PETTIS &
SALINE COUNTIES

Rates Fringes

Painters:

| | | |
|---|----------|-------|
| Bridgeman; Lead Abatement; Sandblast; Storage Bin & Tanks..... | \$ 26.73 | 17.76 |
| Brush & Roller..... | \$ 24.43 | 17.76 |
| Drywall..... | \$ 25.39 | 17.76 |
| Paper Hanger..... | \$ 24.83 | 17.76 |
| Stageman; Beltman; Steelman; Elevator Shaft; Bazooka, Boxes and Power Sander; Sprayman; Dipping... | \$ 26.35 | 17.76 |
| Steeplejack..... | \$ 29.58 | 17.76 |

PAIN1185-008 04/01/2024

CAMDEN, CRAWFORD, DENT, LACLEDE, MARIES, MILLER, PHELPS,
PULASKI AND TEXAS COUNTIES

Rates Fringes

Painters:

| | | |
|-----------------------|----------|-------|
| Brush and Roller..... | \$ 32.25 | 16.86 |
| Floor Work..... | \$ 33.25 | 16.86 |
| Lead Abatement..... | \$ 33.25 | 16.86 |
| Spray..... | \$ 33.25 | 16.86 |

Structural Steel,
 Sandblasting and All Tank
 Work.....\$ 34.25 16.86
 Taping, Paperhanging.....\$ 33.25 16.86

 PAIN1292-002 09/01/2024

BOLLINGER, BUTLER, CAPE GIRARDEAU, CARTER, DUNKLIN,
 MISSISSIPPI, NEW MADRID, OREGON, PEMISCOT, PERRY, REYNOLDS,
 RIPLEY, SCOTT, SHANNON, STODDARD and WAYNE COUNTIES

| | Rates | Fringes |
|---|----------|---------|
| Painters: | | |
| Bridges, Stacks & Tanks..... | \$ 35.30 | 17.65 |
| Brush & Roller..... | \$ 27.85 | 17.65 |
| Spray & Abrasive Blasting; Waterblasting (over 5000 PSI)..... | \$ 31.95 | 17.65 |

Height Rates (All Areas):
 Over 60 ft. \$0.50 per hour.
 Under 60 ft. \$0.25 per hour.

 PAIN1292-003 09/01/2024

IRON, MADISON, ST. FRANCOIS, STE. GENEVIEVE and WASHINGTON
 COUNTIES

| | Rates | Fringes |
|---|----------|---------|
| Painters: | | |
| Bridges, Stacks & Tanks..... | \$ 35.30 | 17.65 |
| Brush & Roller..... | \$ 29.95 | 17.65 |
| Spray & Abrasive Blasting; Waterblasting (Over 5000 PSI)..... | \$ 33.95 | 17.65 |

Height Rates (All Areas):
 Over 60 ft. \$0.50 per hour
 Under 60 ft. \$0.25 per hour.

 PAIN2012-001 04/01/2023

ANDREW, ATCHISON, BUCHANAN, DE KALB, GENTRY, HOLT, NODAWAY &
 WORTH COUNTIES

| | Rates | Fringes |
|---------------------|----------|---------|
| Painters: | | |
| Brush & Roller..... | \$ 34.22 | 19.13 |
| Sandblaster..... | \$ 38.46 | 19.13 |
| Steeplejack..... | \$ 42.03 | 19.13 |

 PAIN2015-001 04/01/2012

BARRY, BARTON, CEDAR, CHRISTIAN, DADE, DALLAS, DOUGLAS, GREENE,
 HICKORY, HOWELL, JASPER, LAWRENCE, MCDONALD, NEWTON, OZARK,
 POLK, ST. CLAIR, STONE, TANEY, VERNON, WEBSTER, and WRIGHT
 COUNTIES

| | Rates | Fringes |
|--|----------|---------|
| Painters: | | |
| Finisher..... | \$ 20.18 | 11.33 |
| Painter..... | \$ 19.75 | 11.76 |
| Sandblaster, High Man, Spray Man, Vinyl Hanger, Tool Operator..... | \$ 21.18 | 11.33 |

 PLAS0518-006 03/01/2023

BARRY, BARTON, CEDAR, CHRISTIAN, DADE, DALLAS, DOUGLAS, GREENE,
 HICKORY, JASPER, LACLEDE, LAWRENCE, MCDONALD, NEWTON, OZARK,
 POLK, ST. CLAIR, STONE, TANEY, VERNON, WEBSTER, AND WRIGHT
 COUNTIES

| | Rates | Fringes |
|-----------------------------------|----------|---------|
| CEMENT MASON/CONCRETE FINISHER... | \$ 26.57 | 12.43 |

 PLAS0518-007 04/01/2024

CASS (Richards-Gebaur AFB only), CLAY, JACKSON, PLATTE AND RAY
 COUNTIES

| | Rates | Fringes |
|---------------------|----------|---------|
| Cement Masons:..... | \$ 37.61 | 18.71 |

 PLAS0518-011 04/01/2023

ANDREW, ATCHISON, BATES, BUCHANNAN, CLINTON, DEKALB, GENTRY,
 HENRY, HOLT, JOHNSON, LAFAYETTE, NODAWAY & WORTH COUNTIES

| | Rates | Fringes |
|-----------------------------------|----------|---------|
| CEMENT MASON/CONCRETE FINISHER... | \$ 36.03 | 20.50 |

 PLAS0527-001 04/01/2023

| | Rates | Fringes |
|--|----------|---------|
| CEMENT MASON | | |
| FRANKLIN, LINCOLN AND WARREN COUNTIES..... | \$ 37.29 | 20.23 |
| JEFFERSON, ST. CHARLES COUNTIES AND ST. LOUIS (City and County)..... | \$ 38.46 | 20.13 |

 PLAS0527-004 06/01/2023

CRAWFORD, DENT, IRON, MADISON, MARION, PHELPS, PIKE, PULASKI,
 RALLS, REYNOLDS, ST. FRANCOIS, STE. GENEVIEVE, SHANNON, TEXAS,
 WASHINGTON COUNTIES

| | Rates | Fringes |
|-------------------|----------|---------|
| CEMENT MASON..... | \$ 32.00 | 19.72 |

PLAS0908-001 05/01/2024

BOLLINGER, BUTLER, CAPE GIRARDEAU, CARTER, DUNKLIN, HOWELL,
MISSISSIPPI, NEW MADRID, OREGON, PEMISCOT, PERRY, RIPLEY,
SCOTT, STODDARD, AND WAYNE COUNTIES

| | Rates | Fringes |
|-------------------|----------|---------|
| CEMENT MASON..... | \$ 33.50 | 18.78 |

PLAS0908-005 05/01/2024

BENTON, CALDWELL, CALLAWAY, CAMDEN, CARROLL, COLE, DAVIESS,
GASCONADE, GRUNDY, HARRISON, LIVINGSTON, MACON, MARIES, MERCER,
MILLER, MONTGOMERY, MORGAN, OSAGE, PETTIS & SALINE COUNTIES

| | Rates | Fringes |
|-------------------|----------|---------|
| CEMENT MASON..... | \$ 33.50 | 18.78 |

PLUM0008-003 06/01/2024

CASS, CLAY, JACKSON, JOHNSON, AND PLATTE COUNTIES

| | Rates | Fringes |
|---------------|----------|---------|
| Plumbers..... | \$ 56.63 | 24.54 |

PLUM0008-017 06/01/2024

BATES, BENTON, CARROLL, HENRY, LAFAYETTE, MORGAN, PETTIS, RAY,
ST. CLAIR, SALINE AND VERNON COUNTIES

| | Rates | Fringes |
|---------------|----------|---------|
| Plumbers..... | \$ 56.63 | 24.54 |

PLUM0045-003 08/01/2024

ANDREW, ATCHISON, BUCHANAN, CALDWELL, CLINTON, DAVIESS, DEKALB,
GENTRY, HARRISON, HOLT, NODAWAY AND WORTH COUNTIES

| | Rates | Fringes |
|-------------------------------|----------|---------|
| Plumbers and Pipefitters..... | \$ 47.45 | 26.15 |

PLUM0178-003 11/01/2024

BARRY, CEDAR, CHRISTIAN, DADE, DALLAS, DOUGLAS, GREENE,
HICKORY, LACLEDE, LAWRENCE, POLK, STONE, TANEY, WEBSTER AND
WRIGHT COUNTIES

| | Rates | Fringes |
|-------------------------------|----------|---------|
| Plumbers and Pipefitters..... | \$ 39.35 | 15.72 |

PLUM0178-006 11/01/2022

BARTON, JASPER, MCDONALD AND NEWTON COUNTIES

| | Rates | Fringes |
|-------------------------------|----------|---------|
| Plumbers and Pipefitters | | |
| Projects \$750,000 & under... | \$ 32.78 | 15.32 |
| Projects over \$750,000..... | \$ 35.75 | 15.32 |

 PLUM0533-004 06/01/2024

BATES, BENTON, CARROLL, CASS, CLAY, HENRY, HICKORY, JACKSON,
 JOHNSON, LAFAYETTE, MORGAN, PETTIS, PLATTE, RAY, SALINE, ST.
 CLAIR AND VERNON COUNTIES

| | Rates | Fringes |
|------------------|----------|---------|
| Pipefitters..... | \$ 55.56 | 25.80 |

 PLUM0562-004 07/01/2023

ADAIR, AUDRAIN, BOLLINGER, BOONE, BUTLER, CALLAWAY, CAMDEN, CAPE
 GIRARDEAU, CARTER, CHARITON, CLARK, COLE, COOPER, CRAWFORD,
 DENT, DUNKLIN, FRANKLIN, GASCONADE, GRUNDY, HOWARD, HOWELL,
 IRON, JEFFERSON, KNOX, LEWIS, LINCOLN, LINN, LIVINGSTON, MACON,
 MADISON, MARIES, MARION, MERCER, MILLER, MISSISSIPPI, MONITEAU,
 MONROE, MONTGOMERY, NEW MADRID, OREGON, OSAGE, PEMISCOTT,
 PERRY, PHELPS, PIKE, PULASKI, PUTNAM, RALLS, RANDOLPH,
 REYNOLDS, RIPLEY, ST. CHARLES, ST. FRANCOIS, STE. GENEVIEVE, ST.
 LOUIS, SCHUYLER, SCOTLAND, SCOTT, SHANNON, SHELBY, STODDARD,
 SULLIVAN, TEXAS, WARREN, WASHINGTON, AND WAYNE COUNTIES.

| | Rates | Fringes |
|----------------------------|----------|---------|
| Plumbers and Pipefitters | | |
| Mechanical Contracts | | |
| including all piping and | | |
| temperature control work | | |
| \$7.0 million & under..... | \$ 46.66 | 21.99 |
| Mechanical Contracts | | |
| including all piping and | | |
| temperature control work | | |
| over \$7.0 million..... | \$ 46.66 | 21.99 |

 PLUM0562-016 07/01/2023

CAMDEN, COLE, CRAWFORD, FRANKLIN, JEFFERSON, MARIES, MILLER,
 MONITEAU, OSAGE, PHELPS, PULASKI, ST. CHARLES, ST. LOUIS (City
 and County), WARREN and WASHINGTON COUNTIES

| | Rates | Fringes |
|----------------------------|----------|---------|
| Plumbers | | |
| Mechanical Contracts | | |
| including all piping and | | |
| temperature control work | | |
| \$7.0 million & under..... | \$ 46.66 | 21.99 |
| Mechanical Contracts | | |
| including all piping and | | |
| temperature control work | | |
| over \$7.0 million..... | \$ 46.66 | 21.99 |

 TEAM0013-001 05/01/2024

| Rates | Fringes |
|-------|---------|
|-------|---------|

| | | |
|---|----------|-------|
| Truck drivers (ADAIR, BUTLER, CLARK, DUNKIN, HOWELL, KNOX, LEWIS, OREGON, PUTNAM, RIPLEY, SCHUYLER AND SCOTLAND COUNTIES) | | |
| GROUP 1..... | \$ 34.29 | 15.75 |
| GROUP 2..... | \$ 34.44 | 15.75 |
| GROUP 3..... | \$ 34.56 | 15.75 |
| GROUP 4..... | \$ 34.45 | 15.75 |

| | | |
|--|----------|-------|
| Truck drivers (AUDRAIN, BOLLINGER, BOONE, CALLAWAY, CAPE GIRARDEAU, CARTER, COLE, CRAWFORD, DENT, GASCONADE, IRON, MACON, MADISON, MARIES, MARION, MILLER, MISSISSIPPI, MONROE, MONTGOMERY, NEW MADRID, OSAGE, PEMISCOT, PERRY, PHELPS, PIKE, PULASKI, RALLS, REYNOLDS, ST. FRANCOIS, STE. GENEVIEVE, SCOTT, SHANNON, SHELBY, STODDARD, TEXAS, WASHINGTON AND WAYNE COUNTIES) | | |
| GROUP 1..... | \$ 35.02 | 15.75 |
| GROUP 2..... | \$ 35.17 | 15.75 |
| GROUP 3..... | \$ 35.29 | 15.75 |
| GROUP 4..... | \$ 35.18 | 15.75 |

| | | |
|--|----------|-------|
| Truck drivers (FRANKLIN, JEFFERSON and ST. CHARLES COUNTIES) | | |
| GROUP 1..... | \$ 37.38 | 15.75 |
| GROUP 2..... | \$ 37.53 | 15.75 |
| GROUP 3..... | \$ 37.60 | 15.75 |
| GROUP 4..... | \$ 37.49 | 15.75 |

| | | |
|--|----------|-------|
| Truck drivers (LINCOLN and WARREN COUNTIES) | | |
| GROUP 1..... | \$ 36.03 | 15.75 |
| GROUP 2..... | \$ 37.18 | 15.75 |
| GROUP 3..... | \$ 36.25 | 15.75 |
| GROUP 4..... | \$ 36.14 | 15.75 |

TRUCK DRIVERS CLASSIFICATIONS:

GROUP 1: Flat Bed Trucks, Single Axle; Station Wagons;
Pickup Trucks; Material Trucks, Single Axle; Tank Wagon,
Single Axle

GROUP 2: Agitator and Transit Mix Trucks

GROUP 3: Flat Bed Trucks, Tandem Axle; Articulated Dump
Trucks; Material Trucks, Tandem Axle; Tank Wagon, Tandem
Axle

GROUP 4: Semi and/or Pole Trailers; Winch, Fork & Steel
Trucks; Distributor Drivers and Operators; Tank Wagon,
Semi-Trailer; Insley Wagons, Dumpsters, Half-Tracks,
Speedace, Euclids and other similar equipment; A-Frame and
Derrick Trucks; Float or Low Boy

TEAM0056-001 05/01/2024

Truck drivers (ANDREW,
 BARTON, BATES, BENTON,
 CALDWELL, CAMDEN, CARROLL,
 CEDAR, CHARITON, CHRISTIAN,
 CLINTON, COOPER, DADE,
 DALLAS, DAVIESS, DEKALB,
 DOUGLAS, GREENE, HENRY,
 HICKORY, HOWARD, JASPER,
 LACLEDE, LAWRENCE, LINN,
 LIVINGSTON, MONITEAU, MORGAN,
 NEWTON, PETTIS, POLK,
 RANDOLPH, ST. CLAIR, SALINE,
 VERNON, WEBSTER AND WRIGHT
 COUNTIES)

| | | |
|--------------|----------|-------|
| GROUP 1..... | \$ 34.72 | 15.75 |
| GROUP 2..... | \$ 34.88 | 15.75 |
| GROUP 3..... | \$ 34.87 | 15.75 |
| GROUP 4..... | \$ 34.99 | 15.75 |

Truck drivers: (ATCHISON,
 BARRY, GENTRY, GRUNDY,
 HARRISON, HOLT, MCDONALD,
 MERCER, NODAWAY, OZARK,
 STONE, SULLIVAN, TANEY AND
 WORTH COUNTIES)

| | | |
|--------------|----------|-------|
| GROUP 1..... | \$ 33.99 | 15.75 |
| GROUP 2..... | \$ 34.15 | 15.75 |
| GROUP 3..... | \$ 34.14 | 15.75 |
| GROUP 4..... | \$ 34.26 | 15.75 |

Truck drivers; (BUCHANAN,
 JOHNSON AND LAFAYETTE
 COUNTIES)

| | | |
|--------------|----------|-------|
| GROUP 1..... | \$ 35.93 | 15.75 |
| GROUP 2..... | \$ 36.04 | 15.75 |
| GROUP 3..... | \$ 36.08 | 15.75 |
| GROUP 4..... | \$ 36.08 | 15.75 |

TRUCK DRIVER CLASSIFICATIONS

GROUP 1: Flat bed trucks single axle; station wagons; pickup trucks; material trucks single axle; tank wagons single axle.

GROUP 2: Agitator and transit mix-trucks.

GROUP 3: Flat bed trucks tandem axle; articulated dump trucks; material trucks tandem axle; tank wagons tandem axle.

GROUP 4: Semi and/or pole trailers; winch, fork & steel trucks; distributor drivers & operators; tank wagons semi-trailer; insley wagons, dumpsters, half-trucks, speedace, euclids & other similar equipment; A-frames and derrick trucks; float or low boy.

 TEAM0245-001 03/26/2012

BARRY, BARTON, CAMDEN, CEDAR, CHRISTIAN, DALLAS, DENT, DOUGLAS,
 GREENE, HICKORY, HOWELL, JASPER, LACLEDE, LAWRENCE, MCDONALD,
 MILLER, NEWTON, OZARK, PHELPS, POLK, PULASKI, SHANNON, STONE,
 TANEY, TEXAS, VERNON, WEBSTER AND WRIGHT COUNTIES

Truck drivers:

Traffic Control Service
Driver.....\$ 20.45 0.00

PAID HOLIDAYS: New Year's Day, Decoration Day, July 4th,
Labor Day, Thanksgiving Day, Christmas Day, employee's
birthday and 2 personal days.

TEAM0541-001 04/01/2024

CASS, CLAY, JACKSON, PLATTE AND RAY COUNTIES

| | Rates | Fringes |
|----------------|----------|---------|
| Truck drivers: | | |
| GROUP 1..... | \$ 37.81 | 15.65 |
| GROUP 2..... | \$ 37.24 | 15.65 |
| GROUP 3..... | \$ 36.72 | 15.65 |

TRUCK DRIVERS CLASSIFICATIONS

GROUP 1: Mechanics and Welders, Field; A-Frame Low Boy-Boom
ruck Driver.

GROUP 2: Articulated Dump Truck; Insley Wagons: Dump Trucks,
Excavating, 5 cu yds and over; Dumpsters; Half-Tracks:
Speedace: Euclids & similar excavating equipment Material
trucks, Tandem Two teams; Semi-Trailers; Winch trucks-Fork
trucks; Distributor Drivers and Operators; Agitator and
Transit Mix; Tank Wagon Drivers, Tandem or Semi; One Team;
Station Wagons; Pickup Trucks; Material Trucks, Single
Axle; Tank Wagon Drivers, Single Axle

GROUP 3: Oilers and Greasers - Field

TEAM0682-002 05/01/2024

ST LOUIS CITY AND COUNTY

| | Rates | Fringes |
|----------------|----------|------------|
| Truck drivers: | | |
| GROUP 1..... | \$ 36.64 | 8.86+a+b+c |
| GROUP 2..... | \$ 36.64 | 8.86+a+b+c |
| GROUP 3..... | \$ 36.64 | 8.86+a+b+c |

a. PENSION: 5/1/2012 - \$182.20 per week.

b. HAZMAT PREMIUM: If Hazmat certification on a job site is
required by a state or federal agency or requested by
project owner or by the employer, employees on that job
site shall receive \$1.50 premium pay.

TRUCK DRIVERS CLASSIFICATIONS

GROUP 1 - Pick-up trucks; forklift, single axle; flatbed
trucks; job site ambulance, and trucks or trailers of a
water level capacity of 11.99 cu. yds. or less

GROUP 2 - Trucks or trailers of a water level capacity of
12.0 cu yds. up to 22.0 cu yds. including euclids, speedace
and similar equipment of same capacity and compressors

GROUP 3 - Trucks or trailers of a water level capacity of 22.0 cu. yds & over including euclids, speedace & all floats, flatbed trailers, boom trucks, winch trucks, including small trailers, farm wagons tilt-top trailers, field offices, tool trailers, concrete pumps, concrete conveyors & gasoline tank trailers and truck mounted mobile concrete mixers

FOOTNOTE FOR TRUCK DRIVERS:

c. PAID HOLIDAYS: Christmas Day, Independence Day, Labor Day, Memorial Day, Veterans Day, New Years Day, Thanksgiving Day

d. PAID VACATION: 3 days paid vacation for 600 hours of service in any one contract year; 4 days paid vacation for 800 hours of service in any one contract year; 5 days paid vacation for 1,000 hours of service in any one contract year. When such an employee has completed 3 years of continuous employment with the same employer and then works the above required number of hours, he shall receive double the number of days of vacation specified above. When such an employee has completed 10 years of continuous employment with the same employer and then works the above required number of hours, he shall receive triple the number of days of vacation specified above. When such an employee has completed 15 years of continuous employment with the same employer and then works the above required number of hours, he shall receive 4 times the number of days of vacation specified above.

WELDERS - Receive rate prescribed for craft performing operation to which welding is incidental.

=====
Note: Executive Order (EO) 13706, Establishing Paid Sick Leave for Federal Contractors applies to all contracts subject to the Davis-Bacon Act for which the contract is awarded (and any solicitation was issued) on or after January 1, 2017. If this contract is covered by the EO, the contractor must provide employees with 1 hour of paid sick leave for every 30 hours they work, up to 56 hours of paid sick leave each year. Employees must be permitted to use paid sick leave for their own illness, injury or other health-related needs, including preventive care; to assist a family member (or person who is like family to the employee) who is ill, injured, or has other health-related needs, including preventive care; or for reasons resulting from, or to assist a family member (or person who is like family to the employee) who is a victim of, domestic violence, sexual assault, or stalking. Additional information on contractor requirements and worker protections under the EO is available at <https://www.dol.gov/agencies/whd/government-contracts>.

Unlisted classifications needed for work not included within the scope of the classifications listed may be added after award only as provided in the labor standards contract clauses (29CFR 5.5 (a) (1) (iii)).

The body of each wage determination lists the classifications and wage rates that have been found to be prevailing for the type(s) of construction and geographic area covered by the wage determination. The classifications are listed in alphabetical order under rate identifiers indicating whether the particular rate is a union rate (current union negotiated rate), a survey rate, a weighted union average rate, a state adopted rate, or a supplemental classification rate.

Union Rate Identifiers

A four-letter identifier beginning with characters other than ""SU"", ""UAVG"", ?SA?, or ?SC? denotes that a union rate was prevailing for that classification in the survey. Example: PLUM0198-005 07/01/2024. PLUM is an identifier of the union whose collectively bargained rate prevailed in the survey for this classification, which in this example would be Plumbers. 0198 indicates the local union number or district council number where applicable, i.e., Plumbers Local 0198. The next number, 005 in the example, is an internal number used in processing the wage determination. The date, 07/01/2024 in the example, is the effective date of the most current negotiated rate.

Union prevailing wage rates are updated to reflect all changes over time that are reported to WHD in the rates in the collective bargaining agreement (CBA) governing the classification.

Union Average Rate Identifiers

The UAVG identifier indicates that no single rate prevailed for those classifications, but that 100% of the data reported for the classifications reflected union rates. EXAMPLE: UAVG-OH-0010 01/01/2024. UAVG indicates that the rate is a weighted union average rate. OH indicates the State of Ohio. The next number, 0010 in the example, is an internal number used in producing the wage determination. The date, 01/01/2024 in the example, indicates the date the wage determination was updated to reflect the most current union average rate.

A UAVG rate will be updated once a year, usually in January, to reflect a weighted average of the current rates in the collective bargaining agreements on which the rate is based.

Survey Rate Identifiers

The ""SU"" identifier indicates that either a single non-union rate prevailed (as defined in 29 CFR 1.2) for this classification in the survey or that the rate was derived by computing a weighted average rate based on all the rates reported in the survey for that classification. As a weighted average rate includes all rates reported in the survey, it may include both union and non-union rates. Example: SUFL2022-007 6/27/2024. SU indicates the rate is a single non-union prevailing rate or a weighted average of survey data for that classification. FL indicates the State of Florida. 2022 is the year of the survey on which these classifications and rates are based. The next number, 007 in the example, is an internal number used in producing the wage determination. The date, 6/27/2024 in the example, indicates the survey completion date for the classifications and rates under that identifier.

?SU? wage rates typically remain in effect until a new survey is conducted. However, the Wage and Hour Division (WHD) has the

discretion to update such rates under 29 CFR 1.6(c)(1).

State Adopted Rate Identifiers

The "SA" identifier indicates that the classifications and prevailing wage rates set by a state (or local) government were adopted under 29 C.F.R 1.3(g)-(h). Example: SAME2023-007 01/03/2024. SA reflects that the rates are state adopted. ME refers to the State of Maine. 2023 is the year during which the state completed the survey on which the listed classifications and rates are based. The next number, 007 in the example, is an internal number used in producing the wage determination. The date, 01/03/2024 in the example, reflects the date on which the classifications and rates under the "SA" identifier took effect under state law in the state from which the rates were adopted.

WAGE DETERMINATION APPEALS PROCESS

1) Has there been an initial decision in the matter? This can be:

- a) a survey underlying a wage determination
- b) an existing published wage determination
- c) an initial WHD letter setting forth a position on a wage determination matter
- d) an initial conformance (additional classification and rate) determination

On survey related matters, initial contact, including requests for summaries of surveys, should be directed to the WHD Branch of Wage Surveys. Requests can be submitted via email to davisbaconinfo@dol.gov or by mail to:

Branch of Wage Surveys
Wage and Hour Division
U.S. Department of Labor
200 Constitution Avenue, N.W.
Washington, DC 20210

Regarding any other wage determination matter such as conformance decisions, requests for initial decisions should be directed to the WHD Branch of Construction Wage Determinations. Requests can be submitted via email to BCWD-Office@dol.gov or by mail to:

Branch of Construction Wage Determinations
Wage and Hour Division
U.S. Department of Labor
200 Constitution Avenue, N.W.
Washington, DC 20210

2) If an initial decision has been issued, then any interested party (those affected by the action) that disagrees with the decision can request review and reconsideration from the Wage and Hour Administrator (See 29 CFR Part 1.8 and 29 CFR Part 7). Requests for review and reconsideration can be submitted via email to dba.reconsideration@dol.gov or by mail to:

Wage and Hour Administrator
U.S. Department of Labor
200 Constitution Avenue, N.W.
Washington, DC 20210

The request should be accompanied by a full statement of the interested party's position and any information (wage payment data, project description, area practice material, etc.) that the requestor considers relevant to the issue.

3) If the decision of the Administrator is not favorable, an interested party may appeal directly to the Administrative Review Board (formerly the Wage Appeals Board). Write to:

Administrative Review Board
U.S. Department of Labor
200 Constitution Avenue, N.W.
Washington, DC 20210.

=====

END OF GENERAL DECISION"

Item P-620 Runway and Taxiway Marking

DESCRIPTION

620-1.1 This item shall consist of the preparation and painting of numbers, markings, and stripes on the surface of runways, taxiways, and aprons, in accordance with these specifications and at the locations shown on the plans, or as directed by the Resident Project Representative (RPR). The terms “paint” and “marking material” as well as “painting” and “application of markings” are interchangeable throughout this specification.

MATERIALS

620-2.1 Materials acceptance. The Contractor shall furnish manufacturer’s certified test reports, for materials shipped to the project. The certified test reports shall include a statement that the materials meet the specification requirements. This certification along with a copy of the paint manufacturer’s surface preparation; marking materials, including adhesion, flow promoting and/or floatation additive; and application requirements must be submitted and approved by the Resident Project Representative (RPR) prior to the initial application of markings. The reports can be used for material acceptance or the RPR may perform verification testing. The reports shall not be interpreted as a basis for payment. The Contractor shall notify the RPR upon arrival of a shipment of materials to the site. All material shall arrive in sealed containers that are easily quantifiable for inspection by the RPR.

620-2.2 Marking materials.

Table 1. Marking Materials

| Paint ¹ | | | | Glass Beads ² | |
|----------------------|--------|---------------------|--|--------------------------|--------------------------------|
| Type | Color | Fed Std. 595 Number | Application Rate Maximum | Type | Application Rate Minimum |
| Waterborne Type I | Yellow | 33538 or 33655 | 115ft ² /gal (2.8 m ² /l) | Type I, Gradation A | 7lb/gal (0.85 kg/l) |
| Waterborne Type I | White | 37925 | 115ft ² /gal (2.8 m ² /l) | Type I, Gradation A | 7lb/gal (0.85 kg/l) |
| Waterborne Type I | Black | 37038 | 115ft ² /gal (2.8 m ² /l) | N/A | N/A |

¹ See paragraph 620-2.2a

² See paragraph 620-2.2b

a. Paint. Paint shall be waterborne in accordance with the requirements of this paragraph. Paint colors shall comply with Federal Standard No. 595.

Waterborne. Paint shall meet the requirements of Federal Specification TT-P-1952F, Type I. The non-volatile portion of the vehicle for all paint types shall be composed of a 100% acrylic polymer as determined by infrared spectral analysis.

b. Reflective media. Glass beads for white and yellow paint shall meet the requirements for Federal Specification TT-B-1325D Type I, Gradation A.

Glass beads shall be treated with all compatible coupling agents recommended by the manufacturers of the paint and reflective media to ensure adhesion and embedment.

Glass beads shall not be used in black and green paint.

Type III glass beads shall not be used in red and pink paint.

CONSTRUCTION METHODS

620-3.1 Weather limitations. Painting shall only be performed when the surface is dry, and the ambient temperature and the pavement surface temperature meet the manufacturer's recommendations in accordance with paragraph 620-2.1. Painting operations shall be discontinued when the ambient or surface temperatures does not meet the manufacturer's recommendations. Markings shall not be applied when the wind speed exceeds 10 mph unless windscreens are used to shroud the material guns. Markings shall not be applied when weather conditions are forecasts to not be within the manufacturers' recommendations for application and dry time.

620-3.2 Equipment. Equipment shall include the apparatus necessary to properly clean the existing surface, a mechanical marking machine, a bead dispensing machine, and such auxiliary hand-painting equipment as may be necessary to satisfactorily complete the job.

The mechanical marker shall be an atomizing spray-type or airless type marking machine with automatic glass bead dispensers suitable for application of traffic paint. It shall produce an even and uniform film thickness and appearance of both paint and glass beads at the required coverage and shall apply markings of uniform cross-sections and clear-cut edges without running or spattering and without over spray. The marking equipment for both paint and beads shall be calibrated daily.

620-3.3 Preparation of surfaces. Immediately before application of the paint, the surface shall be dry and free from dirt, grease, oil, laitance, or other contaminants that would reduce the bond between the paint and the pavement. Use of any chemicals or impact abrasives during surface preparation shall be approved in advance by the RPR. After the cleaning operations, sweeping, blowing, or rinsing with pressurized water shall be performed to ensure the surface is clean and free of grit or other debris left from the cleaning process.

a. Preparation of new pavement surfaces. The area to be painted shall be cleaned by broom, blower, water blasting, or by other methods approved by the RPR to remove all contaminants, including PCC curing compounds, minimizing damage to the pavement surface.

b. Preparation of pavement to remove existing markings. Existing pavement markings shall be removed by rotary grinding, water blasting, or by other methods approved by the RPR minimizing damage to the pavement surface. The removal area may need to be larger than the area of the markings to eliminate ghost markings. After removal of markings on asphalt pavements, apply a fog seal or seal coat to 'block out' the removal area to eliminate 'ghost' markings.

c. Preparation of pavement markings prior to remarking. Prior to remarking existing markings, loose existing markings must be removed minimizing damage to the pavement surface, with a method approved by the RPR. After removal, the surface shall be cleaned of all residue or debris.

Prior to the application of markings, the Contractor shall certify in writing that the surface is dry and free from dirt, grease, oil, laitance, or other foreign material that would prevent the bond of the paint to the pavement or existing markings. This certification along with a copy of the paint manufacturer's application and surface preparation requirements must be submitted to the RPR prior to the initial application of markings.

620-3.4 Layout of markings. The proposed markings shall be laid out in advance of the paint application. The locations of markings to receive glass beads shall be shown on the plans.

620-3.5 Application. A period of 30 days shall elapse between placement of surface course or seal coat and application of the permanent paint markings. Paint shall be applied at the locations and to the dimensions and spacing shown on the plans. Paint shall not be applied until the layout and condition of the surface has been approved by the RPR.

The edges of the markings shall not vary from a straight line more than 1/2 inch (12 mm) in 50 feet (15 m), and marking dimensions and spacing shall be within the following tolerances:

Marking Dimensions and Spacing Tolerance

| Dimension and Spacing | Tolerance |
|---|-------------------|
| 36 inch (910 mm) or less | ±1/2 inch (12 mm) |
| greater than 36 inch to 6 feet (910 mm to 1.85 m) | ±1 inch (25 mm) |
| greater than 6 feet to 60 feet (1.85 m to 18.3 m) | ±2 inch (50 mm) |
| greater than 60 feet (18.3 m) | ±3 inch (76 mm) |

The paint shall be mixed in accordance with the manufacturer's instructions and applied to the pavement with a marking machine at the rate shown in Table 1. The addition of thinner will not be permitted.

Glass beads shall be distributed upon the marked areas at the locations shown on the plans to receive glass beads immediately after application of the paint. A dispenser shall be furnished that is properly designed for attachment to the marking machine and suitable for dispensing glass beads. Glass beads shall be applied at the rate shown in Table 1. Glass beads shall not be applied to black paint or green paint. Glass beads shall adhere to the cured paint or all marking operations shall cease until corrections are made. Different bead types shall not be mixed. Regular monitoring of glass bead embedment and distribution should be performed.

620-3.6 Application--preformed thermoplastic airport pavement markings.

Preformed thermoplastic pavement markings not used.

620-3.7 Control strip. Prior to the full application of airfield markings, the Contractor shall prepare a control strip in the presence of the RPR. The Contractor shall demonstrate the surface preparation method and all striping equipment to be used on the project. The marking equipment must achieve the prescribed application rate of paint and population of glass beads (per Table 1) that are properly embedded and evenly distributed across the full width of the marking. Prior to acceptance of the control strip, markings must be evaluated during darkness to ensure a uniform appearance.

620-3.8 Retro-reflectance. Reflectance shall be measured with a portable retro-reflectometer meeting ASTM E1710 (or equivalent). A total of 6 readings shall be taken over a 6 square foot area with 3 readings taken from each

direction. The average shall be equal to or above the minimum levels of all readings which are within 30% of each other.

Minimum Retro-Reflectance Values

| Material | Retro-reflectance mcd/m ² /lux | | |
|---|---|--------|-----|
| | White | Yellow | Red |
| Initial Type I | 300 | 175 | 35 |
| Initial Type III | 600 | 300 | 35 |
| Initial Thermoplastic | 225 | 100 | 35 |
| All materials, remark when less than ¹ | 100 | 75 | 10 |

¹ Prior to remarking determine if removal of contaminants on markings will restore retro-reflectance

620-3.9 Protection and cleanup. After application of the markings, all markings shall be protected from damage until dry. All surfaces shall be protected from excess moisture and/or rain and from disfiguration by spatter, splashes, spillage, or drippings. The Contractor shall remove from the work area all debris, waste, loose reflective media, and by-products generated by the surface preparation and application operations to the satisfaction of the RPR. The Contractor shall dispose of these wastes in strict compliance with all applicable state, local, and federal environmental statutes and regulations.

METHOD OF MEASUREMENT

620-4.1a The quantity of yellow markings shall be paid for shall be measured by the number of square feet (square meters) of painting.

620-4.1b The quantity of white markings shall be paid for shall be measured by the number of square feet (square meters) of painting.

620-4.1c The quantity of black markings shall be paid for shall be measured by the number of square feet (square meters) of painting.

620-4.1d The quantity of marking obliteration shall be paid for shall be measured by the number of square feet (square meters) of removal.

620-4.1e Temporary markings not required.

BASIS OF PAYMENT

620-5.1 This price shall be full compensation for furnishing all materials and for all labor, equipment, tools, and incidentals necessary to complete the item complete in place and accepted by the RPR in accordance with these specifications.

620-5.1a Payment for yellow markings shall be made at the contract price for the number of square feet (square meters) of painting.

620-5.2b Payment for white markings shall be made at the contract price for the number of square feet (square meters) of painting.

620-5.3c Payment for black markings shall be made at the contract price for the number of square feet (square meters) of painting.

620-5.3d Payment for marking obliteration shall be made at the contract price for the number of square feet (square meters) of removal.

620-5.4e Temporary markings are not required.

Payment will be made under:

| | |
|-------------|--|
| Item P-620a | Permanent Airport Pavement Markings (Yellow) – per square foot |
| Item P-620b | Permanent Airport Pavement Markings (White) – per square foot |
| Item P-620c | Permanent Airport Pavement Markings (Black) – per square foot |
| Item P-620d | Pavement Marking Obliteration – per square foot |

REFERENCES

The publications listed below form a part of this specification to the extent referenced. The publications are referred to within the text by the basic designation only.

ASTM International (ASTM)

| | |
|------------|---|
| ASTM D476 | Standard Classification for Dry Pigmentary Titanium Dioxide Products |
| ASTM D968 | Standard Test Methods for Abrasion Resistance of Organic Coatings by Falling Abrasive |
| ASTM D1652 | Standard Test Method for Epoxy Content of Epoxy Resins |
| ASTM D2074 | Standard Test Method for Total, Primary, Secondary, and Tertiary Amine Values of Fatty Amines by Alternative Indicator Method |
| ASTM D2240 | Standard Test Method for Rubber Property - Durometer Hardness |
| ASTM D7585 | Standard Practice for Evaluating Retroreflective Pavement Markings Using Portable Hand-Operated Instruments |
| ASTM E303 | Standard Test Method for Measuring Surface Frictional Properties Using the British Pendulum Tester |
| ASTM E1710 | Standard Test Method for Measurement of Retroreflective Pavement Marking Materials with CEN-Prescribed Geometry Using a Portable Retroreflectometer |
| ASTM E2302 | Standard Test Method for Measurement of the Luminance Coefficient Under Diffuse Illumination of Pavement Marking Materials Using a Portable Reflectometer |
| ASTM G154 | Standard Practice for Operating Fluorescent Ultraviolet (UV) Lamp Apparatus for Exposure of Nonmetallic Materials |

Code of Federal Regulations (CFR)

| | | | | | | | |
|--|-----|----------------------|-----|----------|------|--------|----|
| 40 | CFR | Part | 60, | Appendix | A-7, | Method | 24 |
| Determination of volatile matter content, water content, density, volume solids, and weight solids of surface coatings | | | | | | | |
| 29 CFR Part 1910.1200 | | Hazard Communication | | | | | |

Federal Specifications (FED SPEC)

| | |
|---------------------|---|
| FED SPEC TT-B-1325D | Beads (Glass Spheres) Retro-Reflective |
| FED SPEC TT-P-1952F | Paint, Traffic and Airfield Marking, Waterborne |
| FED STD 595 | Colors used in Government Procurement |

Commercial Item Description

| | |
|-----------|-------------------------------|
| A-A-2886B | Paint, Traffic, Solvent Based |
|-----------|-------------------------------|

Advisory Circulars (AC)

| | |
|----------------|--|
| AC 150/5340-1 | Standards for Airport Markings |
| AC 150/5320-12 | Measurement, Construction, and Maintenance of Skid Resistant Airport Pavement Surfaces |

END OF ITEM P-620

Item L-125 Installation of Airport Lighting Systems

DESCRIPTION

125-1.1 This item shall consist of airport lighting systems furnished and installed in accordance with this specification, the referenced specifications, and the applicable advisory circulars (ACs). The systems shall be installed at the locations and in accordance with the dimensions, design, and details shown in the plans. This item shall include the furnishing of all equipment, materials, services, and incidentals necessary to place the systems in operation as completed units to the satisfaction of the RPR.

EQUIPMENT AND MATERIALS

125-2.1 General.

a. Airport lighting equipment and materials covered by Federal Aviation Administration (FAA) specifications shall be certified under the Airport Lighting Equipment Certification Program in accordance with AC 150/5345-53, current version. FAA certified airfield lighting shall be compatible with each other to perform in compliance with FAA criteria and the intended operation. If the Contractor provides equipment that does not perform as intended because of incompatibility with the system, the Contractor assumes all costs to correct the system for to operate properly.

b. Manufacturer's certifications shall not relieve the Contractor of their responsibility to provide materials in accordance with these specifications and acceptable to the RPR. Materials supplied and/or installed that do not comply with these specifications shall be removed, when directed by the RPR and replaced with materials, which do comply with these specifications, at the sole cost of the Contractor.

c. All materials and equipment used shall be submitted to the RPR for approval prior to ordering the equipment. Submittals consisting of marked catalog sheets or shop drawings shall be provided. Clearly mark each copy to identify pertinent products or models applicable to this project. Indicate all optional equipment and delete non-pertinent data. Submittals for components of electrical equipment and systems shall identify the equipment for which they apply on each submittal sheet. Markings shall be clearly made with arrows or circles (highlighting is not acceptable). The Contractor shall be responsible for delays in the project accruing directly or indirectly from late submissions or resubmissions of submittals.

d. The data submitted shall be sufficient, in the opinion of the RPR, to determine compliance with the plans and specifications. The Contractor's submittals shall be submitted in electronic PDF format, tabbed by specification section. The RPR reserves the right to reject any or all equipment, materials or procedures, which, in the RPR's opinion, does not meet the system design and the standards and codes, specified herein.

e. All equipment and materials furnished and installed under this section shall be guaranteed against defects in materials and workmanship for a period of at least twelve (12) months from final acceptance by the Owner. The defective materials and/or equipment shall be repaired or replaced, at the Owner's discretion, with no additional cost to the Owner.

All LED light fixtures, with the exception of obstruction lighting (AC 150/5345-43) must be warranted by the manufacturer for a minimum of 4 years after date of installation inclusive of all electronics." Obstruction lighting warranty is set by the individual manufacturer.

EQUIPMENT AND MATERIALS

125-2.2 Conduit/Duct. Conduit shall conform to Specification Item L-110 Airport Underground Electrical Duct Banks and Conduits.

125-2.3 Cable and Counterpoise. Cable and Counterpoise shall conform to Item L-108 Underground Power Cable for Airports.

125-2.4 Tape. Rubber and plastic electrical tapes shall be Scotch Electrical Tape Numbers 23 and 88 respectively, as manufactured by 3M Company or an approved equal.

125-2.5 Cable Connections. Cable Connections shall conform to Item L-108 Installation of Underground Cable for Airports.

125-2.6 Retroreflective Markers. Not required.

125-2.7 Runway and Taxiway Lights. Not required.

125-2.8 Runway and Taxiway Signs. Runway and Taxiway Guidance Signs should conform to the requirements of AC 150/5345-44.

Signs

| Type | Size | Style | Class | Mode | Notes |
|-------|------|-------|-------|------|---------------------------|
| L-858 | 1 | 4 | 2 | 2 | Unlighted, billboard type |

125-2.9 Runway End Identifier Light (REIL). Not required.

125-2.10 Precision Approach Path Indicator (PAPI). Not required.

125-2.11 Circuit Selector Cabinet. Not required.

125-2.12 Light Base and Transformer Housings. Not required.

125-2.13 Isolation Transformers. Not required.

INSTALLATION

125-3.1 Installation. The Contractor shall furnish, install, connect and test all equipment, accessories, conduit, cables, wires, buses, grounds and support items necessary to ensure a complete and operable airport lighting system as specified here and shown in the plans.

The equipment installation and mounting shall comply with the requirements of the National Electrical Code and state and local code agencies having jurisdiction.

The Contractor shall install the specified equipment in accordance with the applicable advisory circulars and the details shown on the plans.

125-3.2 Testing. All lights shall be fully tested by continuous operation for not less than 24 hours as a completed system prior to acceptance. The test shall include operating the constant current regulator in each step not less than 10 times at the beginning and end of the 24-hour test. The fixtures shall illuminate properly during each portion of the test.

125-3.3 Shipping and Storage. Equipment shall be shipped in suitable packing material to prevent damage during shipping. Store and maintain equipment and materials in areas protected from weather and physical damage. Any equipment and materials, in the opinion of the RPR, damaged during construction or storage shall be replaced by the Contractor at no additional cost to the owner. Painted or galvanized surfaces that are damaged shall be repaired in accordance with the manufacturer's recommendations.

125-3.4 Elevated and In-pavement Lights. Water, debris, and other foreign substances shall be removed prior to installing fixture base and light.

A jig or holding device shall be used when installing each light fixture to ensure positioning to the proper elevation, alignment, level control, and azimuth control. Light fixtures shall be oriented with the light beams parallel to the runway or taxiway centerline and facing in the required direction. The outermost edge of fixture shall be level with the surrounding pavement. Surplus sealant or flexible embedding material shall be removed. The holding device shall remain in place until sealant has reached its initial set.

METHOD OF MEASUREMENT

125-4.1 Reflective markers will be measured by the number installed as completed units in place, ready for operation, and accepted by the RPR. Runway and taxiway lights will be measured by the number of each type installed as completed units in place, ready for operation, and accepted by the RPR. Guidance signs will be measured by the number of each type and size installed as completed units, in place, ready for operation, and accepted by the RPR. Runway End Identifier Lights shall be measured by each system installed as a completed unit in place, ready for operation, and accepted by the RPR.

BASIS OF PAYMENT

125-5.1 Payment will be made at the Contract unit price for each complete runway or taxiway light, guidance sign, reflective marker, runway end identification light, precision approach path indicator, or abbreviated precision approach path indicator installed by the Contractor and accepted by the RPR. This payment will be full compensation for furnishing all materials and for all preparation, assembly, and installation of these materials, and for all labor, equipment, tools and incidentals necessary to complete this item.

Payment will be made under:

Item L-125a Install L-858 Guidance Sign, Size 1, Style 4, Stake Mounted, Complete – per each

REFERENCES

The publications listed below form a part of this specification to the extent referenced. The publications are referred to within the text by the basic designation only.

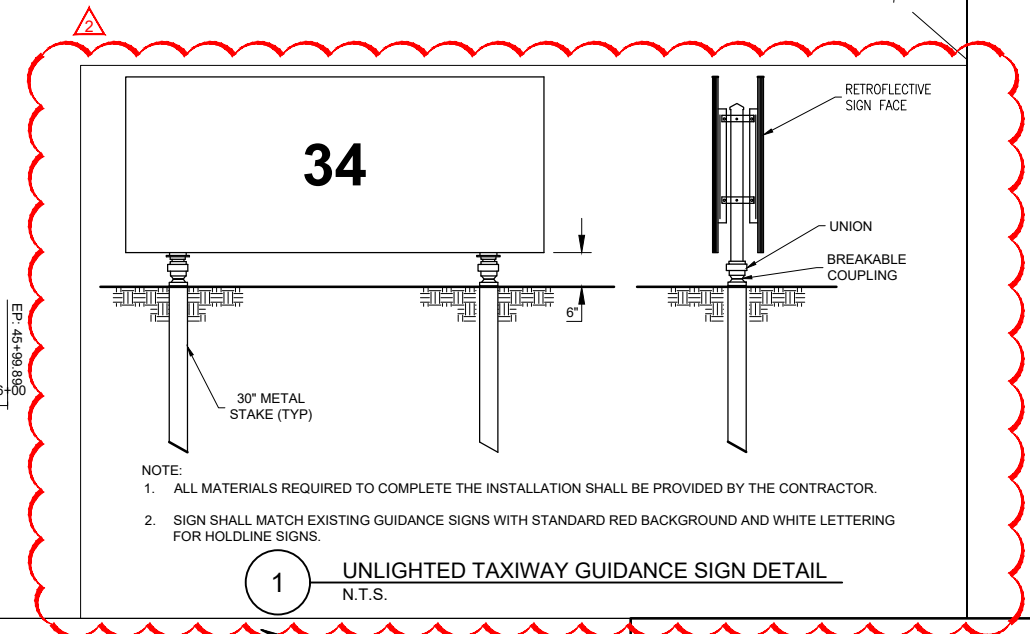
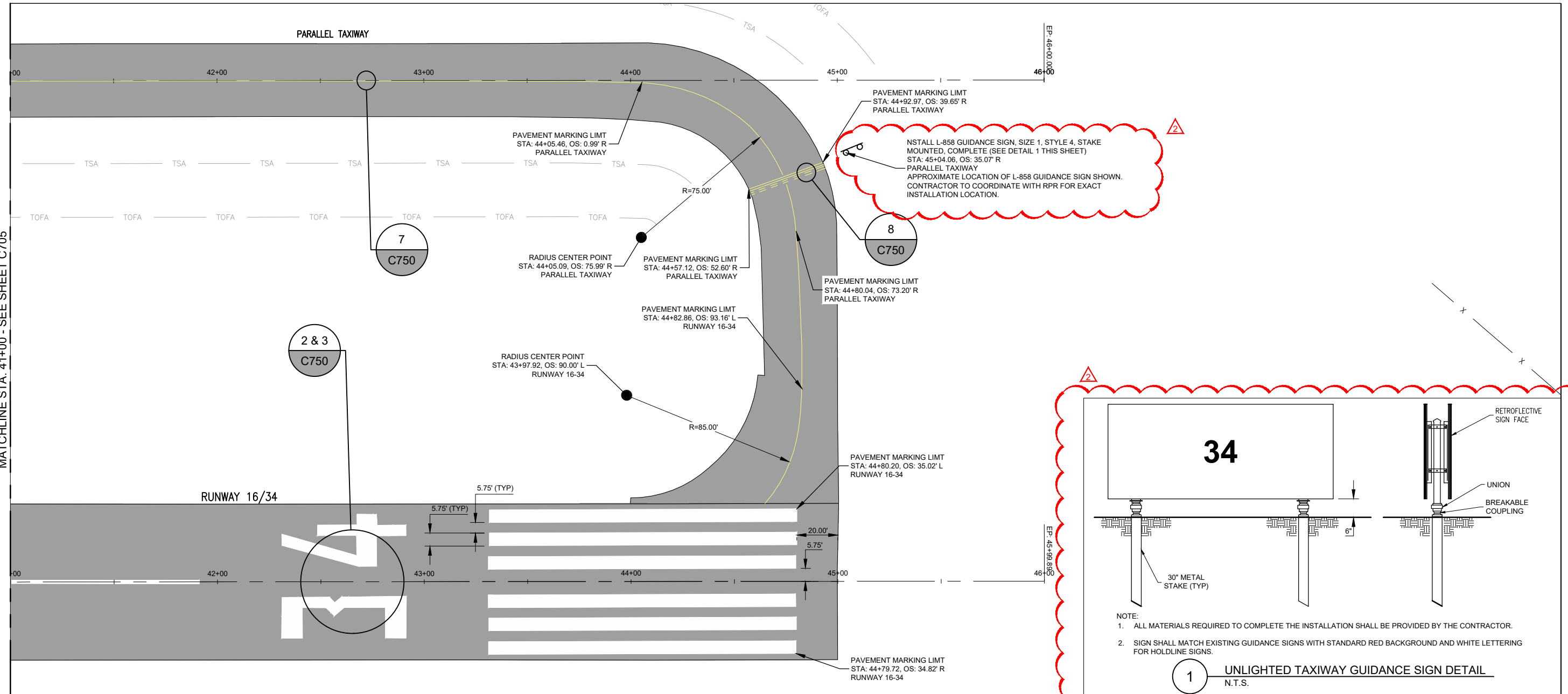
Advisory Circulars (AC)

AC 150/5340-18 Standards for Airport Sign Systems

| | |
|------------------------|---|
| AC 150/5340-26 | Maintenance of Airport Visual Aid Facilities |
| AC 150/5340-30 | Design and Installation Details for Airport Visual Aids |
| AC 150/5345-5 | Circuit Selector Switch |
| AC 150/5345-7 | Specification for L-824 Underground Electrical Cable for Airport Lighting Circuits |
| AC 150/5345-26 | Specification for L-823 Plug and Receptacle, Cable Connectors |
| AC 150/5345-28 | Precision Approach Path Indicator (PAPI) Systems |
| AC 150/5345-39 | Specification for L-853, Runway and Taxiway Retroreflective Markers |
| AC 150/5345-42 | Specification for Airport Light Bases, Transformer Housings, Junction Boxes, and Accessories |
| AC 150/5345-44 | Specification for Runway and Taxiway Signs |
| AC 150/5345-46 | Specification for Runway and Taxiway Light Fixtures |
| AC 150/5345-47 | Specification for Series to Series Isolation Transformers for Airport Lighting Systems |
| AC 150/5345-51 | Specification for Discharge-Type Flashing Light Equipment |
| AC 150/5345-53 | Airport Lighting Equipment Certification Program |
| Engineering Brief (EB) | |
| EB No. 67 | Light Sources Other than Incandescent and Xenon for Airport and Obstruction Lighting Fixtures |

END OF ITEM L-125

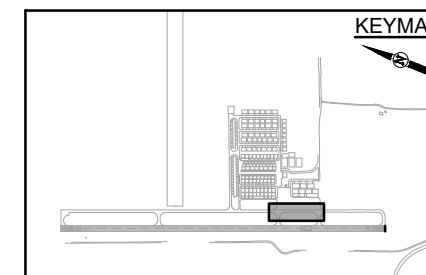
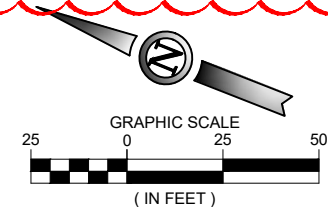
MATCHLINE STA. 41+00 - SEE SHEET C705



GENERAL MARKING NOTES

- SEE SHEET C720 FOR STRIPING DETAILS AND NOTES.
- CONTRACTOR SHALL HAVE A COPY OF THE CURRENT FAA ADVISORY CIRCULAR AC 150/5340-1M "STANDARDS FOR AIRPORT MARKINGS" ON SITE AT ALL TIMES. ANY DISCREPANCY BETWEEN INFORMATION SHOWN ON THE PLAN SHEETS AND THE ADVISORY CIRCULAR SHALL BE COORDINATED WITH THE ENGINEER FOR DIRECTION.
- ALL STRIPING WILL HAVE A BLACK BORDER AT THE DIMENSIONS INDICATED ON THE DETAILS UNLESS STRIPING IS BEING APPLIED TO NEW ASPHALT PAVEMENT.
- CONTRACTOR WILL BE REQUIRED TO REPAINT ANY MARKINGS THAT ARE OUTSIDE THE PROJECT WORK LIMITS WHICH ARE DAMAGED BY THE CONTRACTORS OPERATIONS. REPAINTING OF THESE DAMAGED AREAS WILL BE AT THE CONTRACTORS' EXPENSE.
- ALL TAXIWAY MARKINGS SHALL BE YELLOW AND IN ACCORDANCE WITH SPECIFICATION P-620.
- PAINT SHOULD BE STORED IN A CLIMATE-CONTROLLED ENVIRONMENT IN ORDER TO MEET MANUFACTURERS RECOMMENDED TEMPERATURES BEFORE IT IS APPLIED. MATERIAL THAT DOES NOT MEET REQUIRED TEMPERATURE REQUIREMENTS WILL BE WARMED TO THE MINIMUM TEMPERATURE FOR 24 HOURS BEFORE IT IS APPLIED OR AS APPROVED BY THE RESIDENT ENGINEER.
- ALL PERMANENT MARKINGS SHALL BE APPLIED DURING DAYLIGHT HOURS ONLY.
- GLASS BEADS SHALL BE APPLIED TO ALL TEMPORARY AND PERMANENT PAVEMENT MARKINGS. APPLICATION RATES AND GLASS BEAD TYPE SHALL BE AS SPECIFIED IN ITEM P-620. GLASS BEADS SHALL NOT BE APPLIED TO BLACK PAINT.
- ANY ADDITIONAL DISCREPANCIES BETWEEN THESE PLANS AND THE ACTUAL STRIPING PRESENT IN THE FIELD SHALL BE BROUGHT TO THE ATTENTION OF RESIDENT ENGINEER.
- RUNWAY MARKINGS HAVE PRECEDENCE OVER THE TAXIWAY LEAD IN LINES ON CENTERLINE MARKINGS.
- ENHANCED TAXIWAY CENTERLINE SHALL MATCH EXISTING LAYOUT.
- ANY DISCREPANCIES BETWEEN THESE PLANS AND THE ACTUAL STRIPING PRESENT IN THE FIELD SHALL BE BROUGHT TO THE ATTENTION OF RESIDENT ENGINEER.

| AIRSIDE PAINT MARKINGS LEGEND | | |
|-------------------------------|---------|-----------------------|
| CONCRETE | ASPHALT | |
| | | PROPOSED YELLOW PAINT |
| | | PROPOSED WHITE PAINT |



ISSUED FOR BID

THESE DRAWINGS ARE FOR PURPOSES ONLY. THEY WERE PREPARED BY OR UNDER THE SUPERVISION OF:

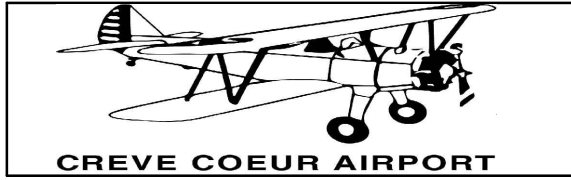
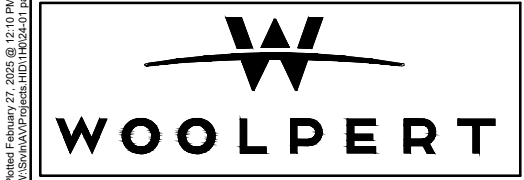
| NAME | # | DATE |
|-------|---|------|
| CIVIL | | |

FOR AND ON BEHALF OF WOOLPERT

| DES: A.A.B. | ISSUE RECORD | | | |
|-------------|--------------|--------|------------|----------------|
| | NO. | BY | DATE | DESCRIPTION |
| DR: A.A.B. | 1 | R.F.G. | 01/28/2025 | ISSUED FOR BID |
| CH: C.L.G. | 2 | R.F.G. | 02/27/2025 | ADDENDUM NO. 3 |
| APP: ##### | | | | |

PAVEMENT MAINTANENCE

| PAVEMENT MARKING PLAN | | SHEET NO. |
|-----------------------------------|--------------------------------|-----------|
| STA: 41+00 TO STA: 46+00 | | |
| PARALLEL TAXIWAY AND RUNWAY 16/34 | | C706 |
| (SCHEDULE II ONLY) | | |
| AIP PROJ. NO. 25-113P1-1 | WOOLPERT PROJ. NO. 10018129 | 26 of 37 |



Printed February 27, 2025 @ 12:10 PM by Bernal, Violet
 P:\S\A\A\Projects\11012624-C1 Pavement Maintenance\F-CAD\PLANS\00-C705-PANT.dwg