

J6S3416 - ROUTE 115, NATURAL BRIDGE ROAD (ST. LOUIS CO.) - PRELIMINARY PLAN

PINE LAWN & UPLANDS PARK

"THIS MEDIA SHOULD NOT BE CONSIDERED A CERTIFIED DOCUMENT."

DATE PREPARED	
1/18/2023	
ROUTE	STATE
115	MO
DISTRICT	SHEET NO.
SL	6
COUNTY	
ST. LOUIS	
JOB NO.	
J6S3416	
CONTRACT ID.	
PROJECT NO.	
BRIDGE NO.	

DATE	DESCRIPTION

MISSOURI HIGHWAYS AND TRANSPORTATION COMMISSION

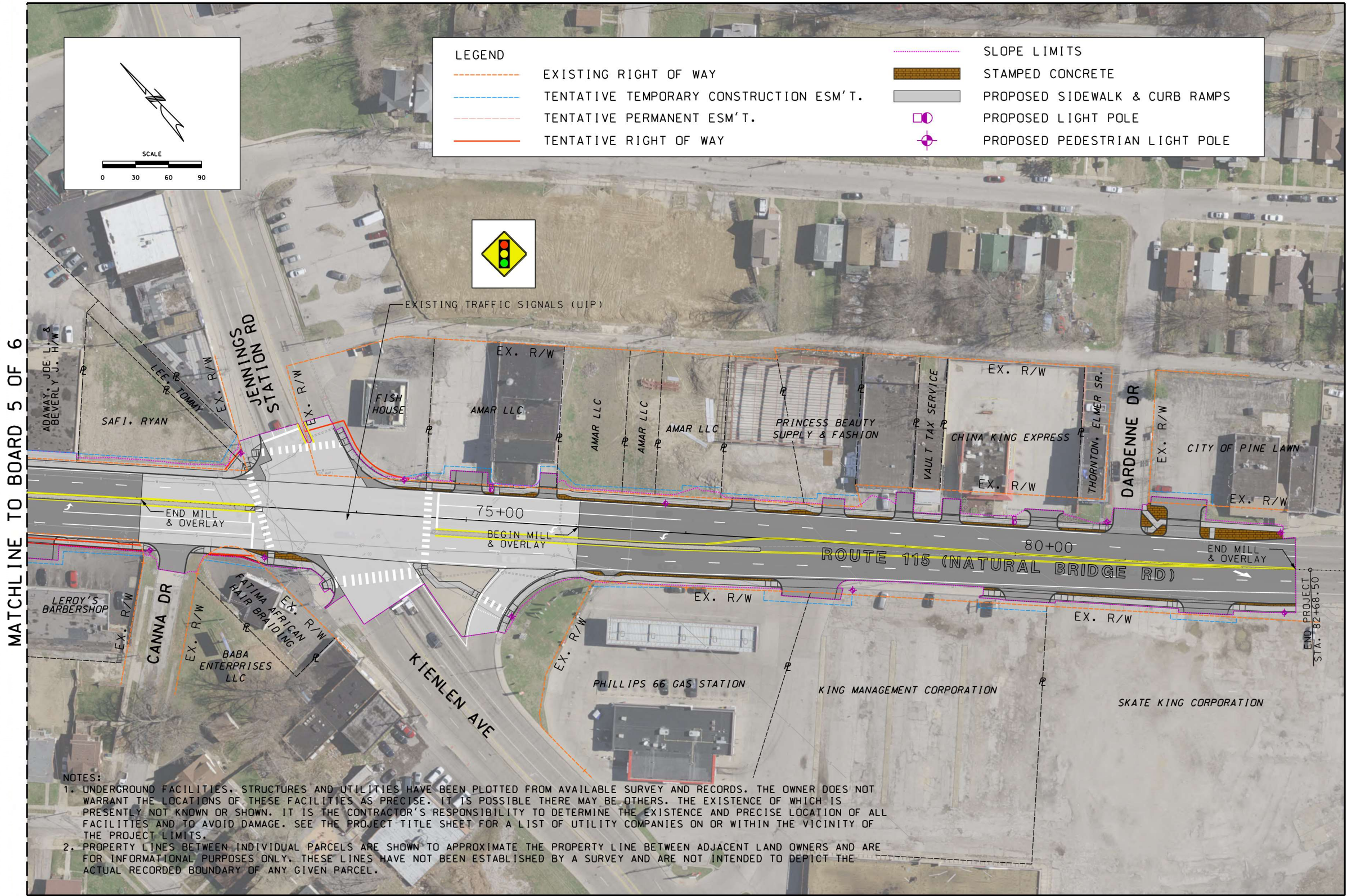
105 WEST CAPITOL  
JEFFERSON CITY, MO 65102  
1-888-ASK-MODOT (1-888-273-6636)



**TWM**  
ENGINEERING  
GEOSPATIAL SERVICES

720 OLIVE STREET, SUITE 200A  
ST. LOUIS, MO 63101  
(314) 341-6300  
www.twm-inc.com  
MISSOURI CERT. OF AUTHORITY: 001528

ROUTE 115  
PRELIMINARY STRIP MAP  
SHEET 6 OF 6



IF A SEAL IS PRESENT ON THIS SHEET IT HAS BEEN ELECTRONICALLY SEALED AND DATED.