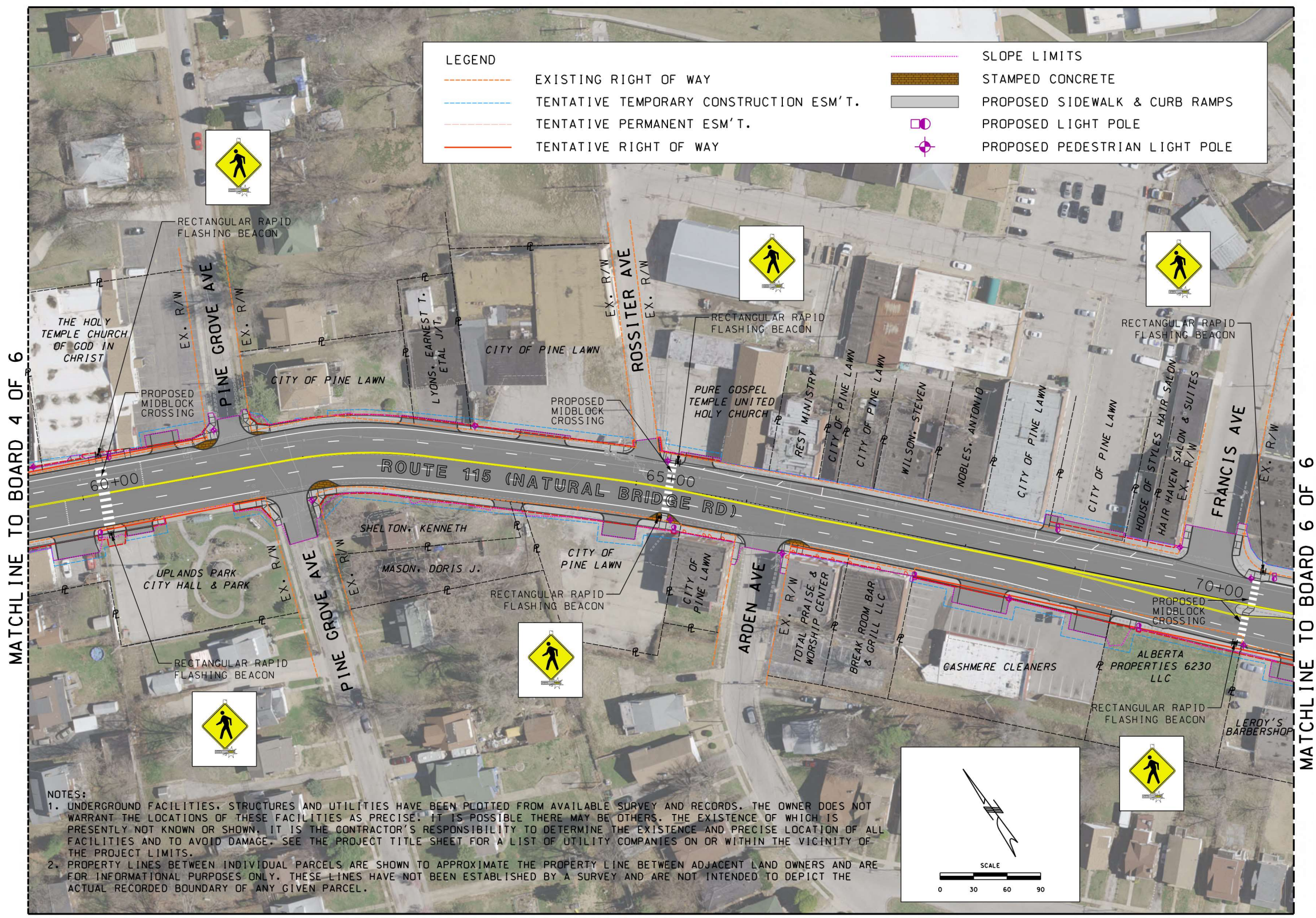


J6S3416 - ROUTE 115, NATURAL BRIDGE ROAD (ST. LOUIS CO.) - PRELIMINARY PLAN

PINE LAWN & UPLANDS PARK



"THIS MEDIA SHOULD NOT BE CONSIDERED A CERTIFIED DOCUMENT."

DATE PREPARED	
1/18/2023	
ROUTE	STATE
115	MO
DISTRICT	SHEET NO.
SL	5
COUNTY	
ST. LOUIS	
JOB NO.	
J6S3416	
CONTRACT ID.	
PROJECT NO.	
BRIDGE NO.	

DESCRIPTION	DATE

MISSOURI HIGHWAYS AND TRANSPORTATION COMMISSION

MoDOT

105 WEST CAPITOL
JEFFERSON CITY, MO 65102
1-888-ASK-MODOT (1-888-273-6636)

TWM

ENGINEERING
GEOSPATIAL SERVICES

720 OLIVE STREET, SUITE 200A
ST. LOUIS, MO 63101
(314) 241-6200
www.twm-inc.com
MISSOURI CERT. OF AUTHORITY: 001528

ROUTE 115
PRELIMINARY STRIP MAP
SHEET 5 OF 6

IF A SEAL IS PRESENT ON THIS SHEET IT HAS BEEN ELECTRONICALLY SEALED AND DATED.