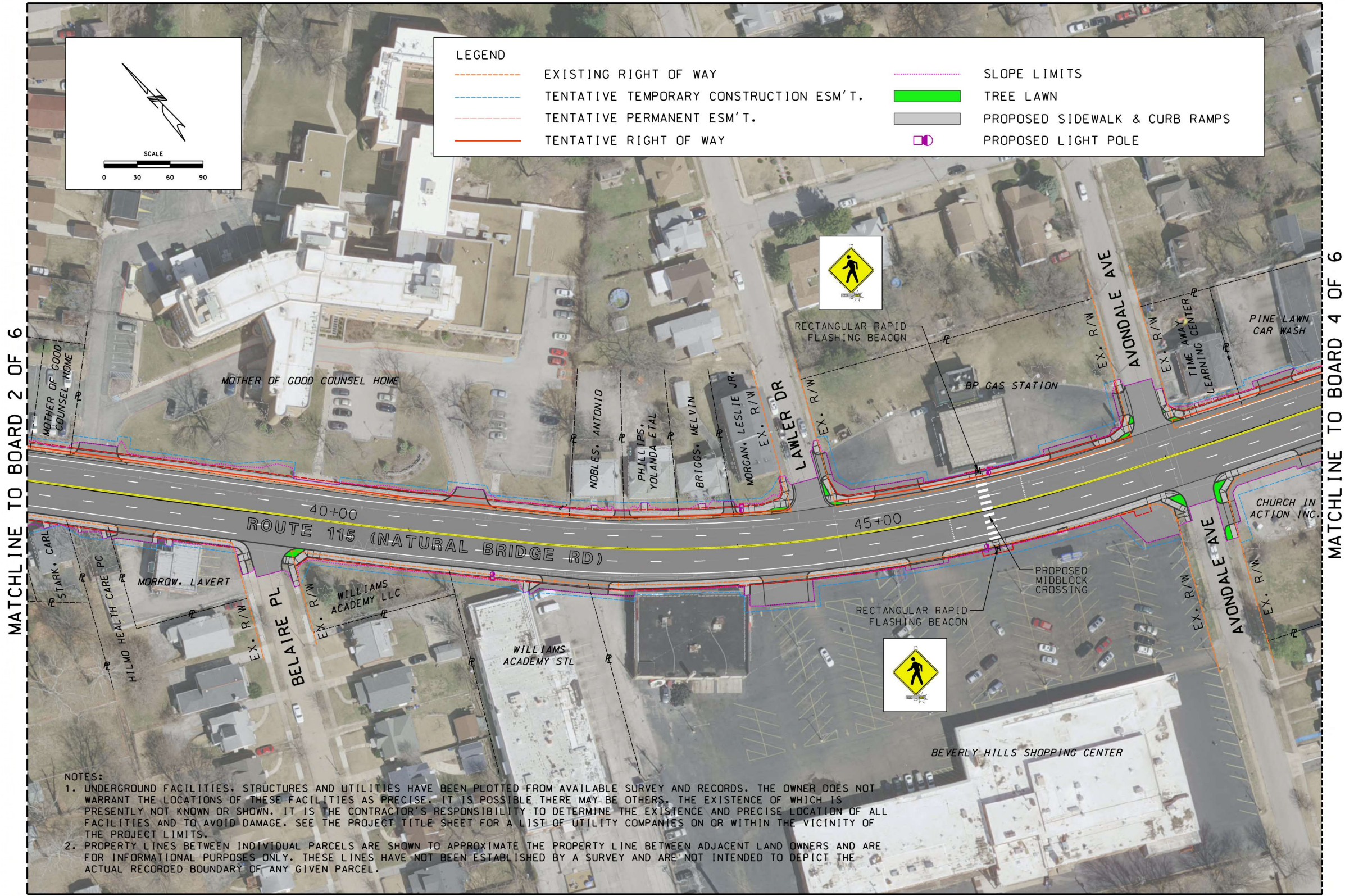


J6S3416 - ROUTE 115, NATURAL BRIDGE ROAD (ST. LOUIS CO.) - PRELIMINARY PLAN

NORTHWOODS & BEVERLY HILLS



"THIS MEDIA SHOULD NOT BE CONSIDERED A CERTIFIED DOCUMENT."

DATE PREPARED
1/18/2023

ROUTE 115	STATE MO
DISTRICT SL	SHEET NO. 3

COUNTY
ST. LOUIS

JOB NO.
J6S3416

CONTRACT ID.

PROJECT NO.

BRIDGE NO.

DATE	DESCRIPTION

MISSOURI HIGHWAYS AND TRANSPORTATION COMMISSION

105 WEST CAPITOL
JEFFERSON CITY, MO 65102
1-888-ASK-MODOT (1-888-273-6636)

720 OLIVE STREET, SUITE 200A
ST. LOUIS, MO 63101
(314) 341-6200
www.twm-inc.com
MISSOURI CERT. OF AUTHORITY: 001528

ROUTE 115
PRELIMINARY STRIP MAP
SHEET 3 OF 6

IF A SEAL IS PRESENT ON THIS SHEET IT HAS BEEN ELECTRONICALLY SEALED AND DATED.