



REMOVE MARKINGS - TO 1952
BE MAINTAINED BY
KANSAS CITY - BY COMM
ACT. 1-76

1.517 (86M-330) (40) 0.682
20' BIT. MAT. - 2.333

REMOVE RTE. MARKINGS FROM OUTER
ROAD BY RTE. MARKINGS CHANGE 11-76

(1979)
0-BY-CO83-29 OR (1) M
24' BIT. MAT. - 1.056

(1974)
0-CO83-0 (1) M
20' BIT. MAT. - 2.333
SBC-0.001

CONST. BY I-29-1 (12)
30' GE & 24' AC - 1.056

2334
K.C. URBAN AREA
1973

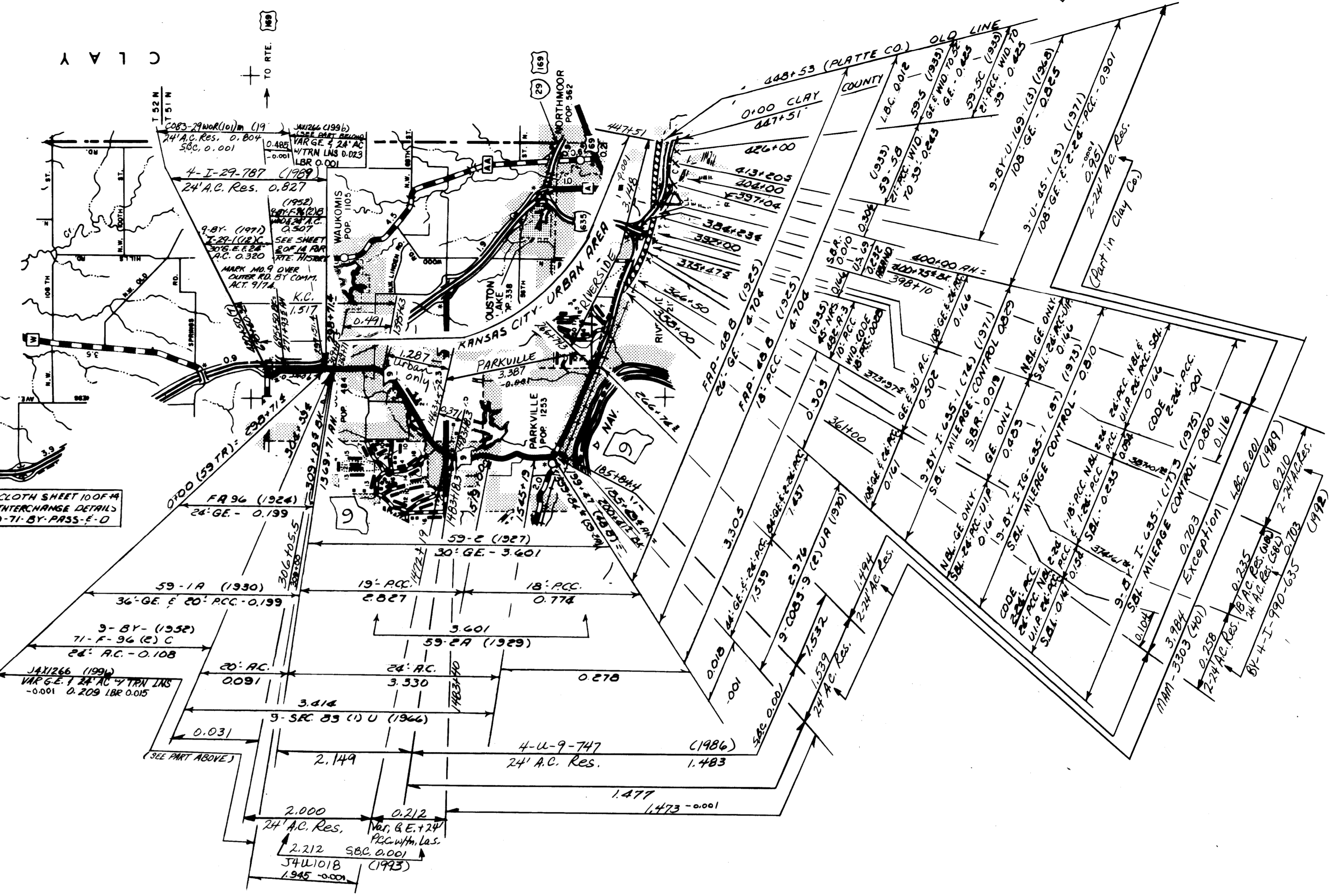
REPLACED
0.027

0-60 (1960)
20' OIL-AGG-TR-2360

0-S-1577 (1) (1957)
24' GE & GRAN. - 2.360

0-1 (T) (1956)
GRAN. - 2.360

SEE CLOTH SHEET 100-F-4
FOR INTERCHANGE DETAILS
I-29-71-BY-PASS-E-D



59-1A (1930)
36' GE & 20' ACC - 0.199

3-BY (1952)
71'-F-36 (E) C
24' AC - 0.108

JAN 26 (1994)
VAR. GE. 1 1/4" TO 4" TRN LRS
-0.001 0.209 1BR 0.015

20' AC
0.091

3.614

5-SR-03 (1) U (1966)

0.031

(SEE PART ABOVE)

2.149

2.000
24' AC. Res.
2.212 SBC 0.001
J44L1018
(1943) 1.945 -0.001

0.212
Var. & E. 1/4"
P22 with LRS
SBC 0.001
(1943)

59-2A (1929)

19' ACC
0.027

26' AC
3.530

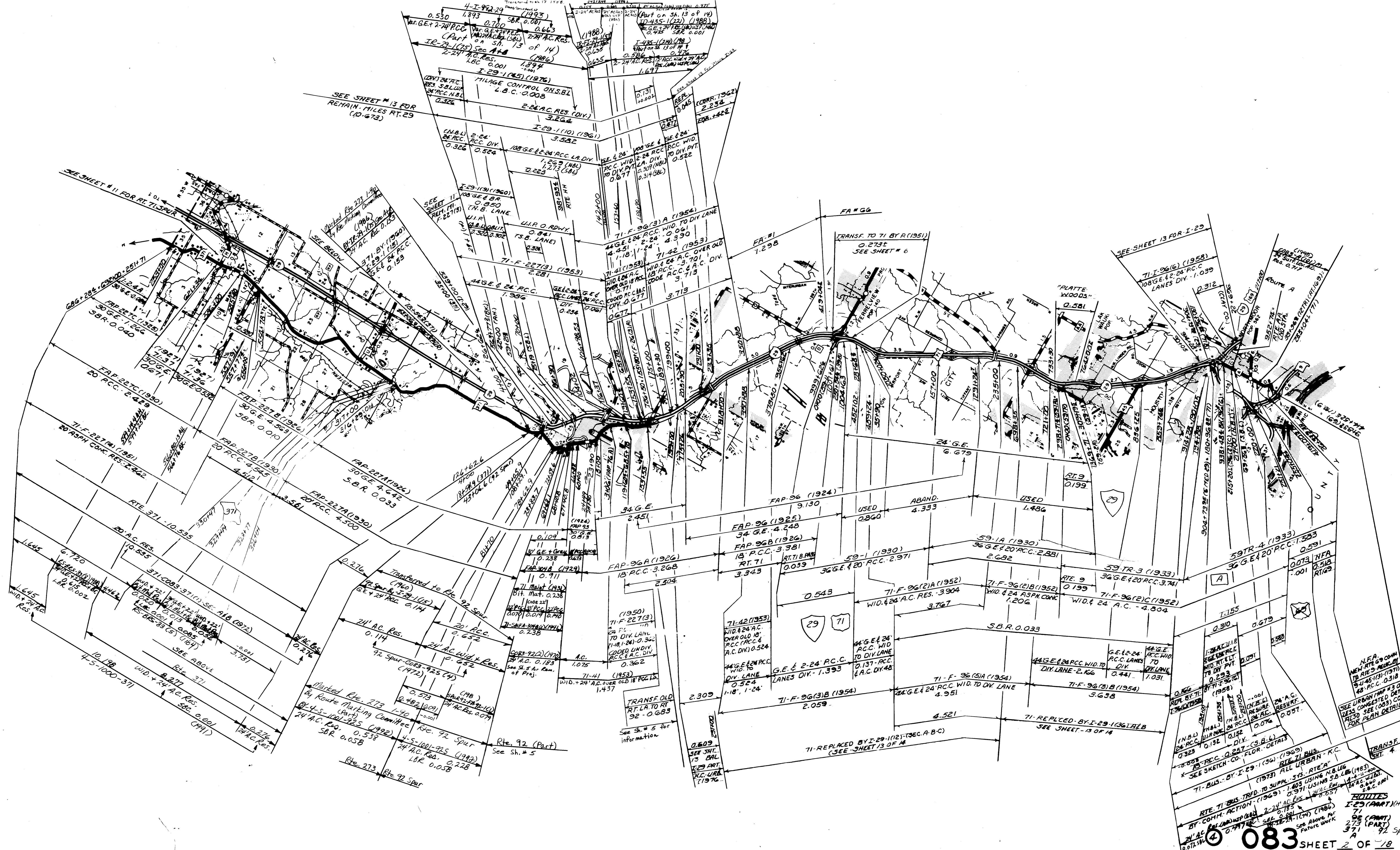
0.278

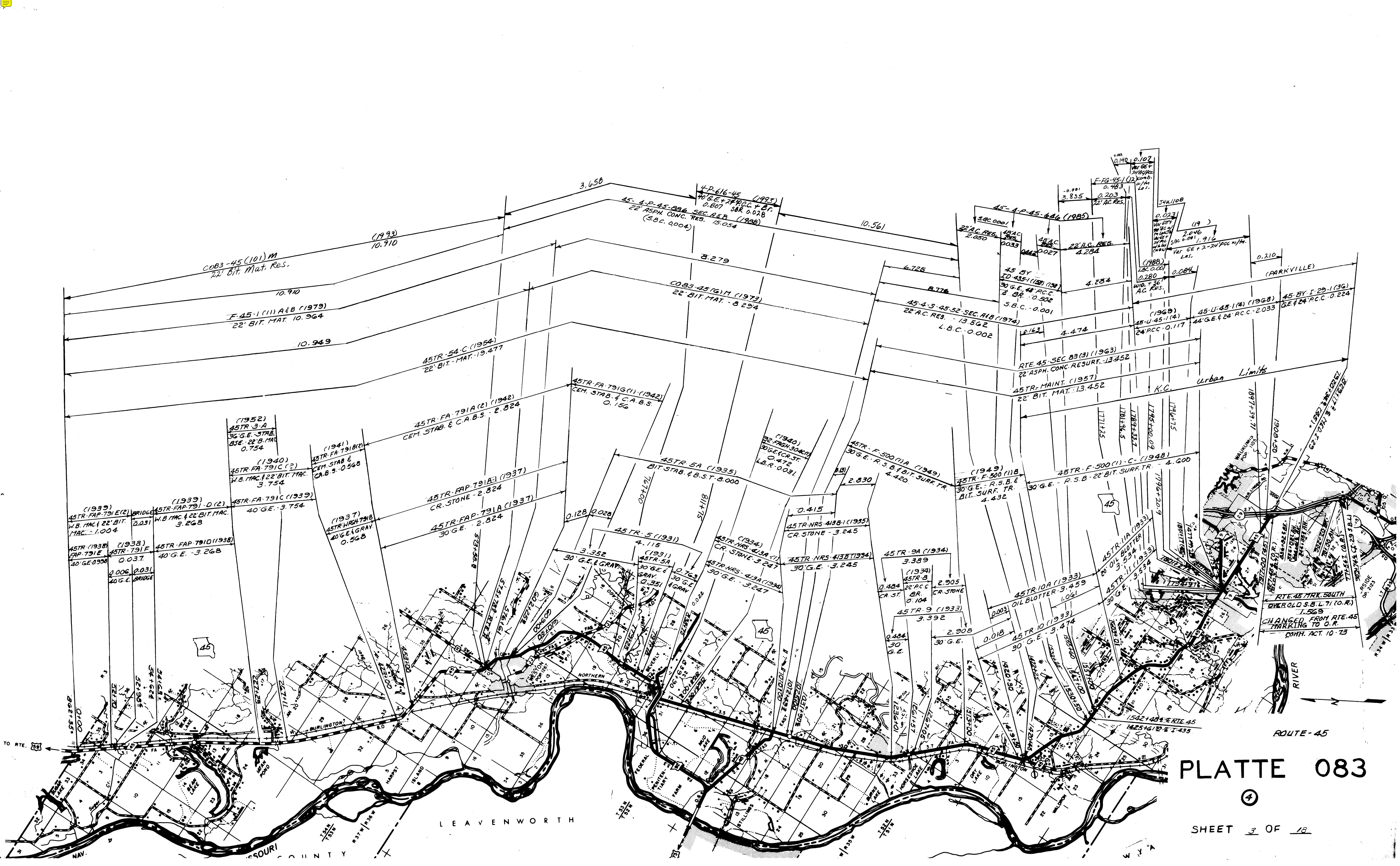
4-U-9-747 (1986)
24' AC. Res. 1.483

1.477
1.473 -0.001



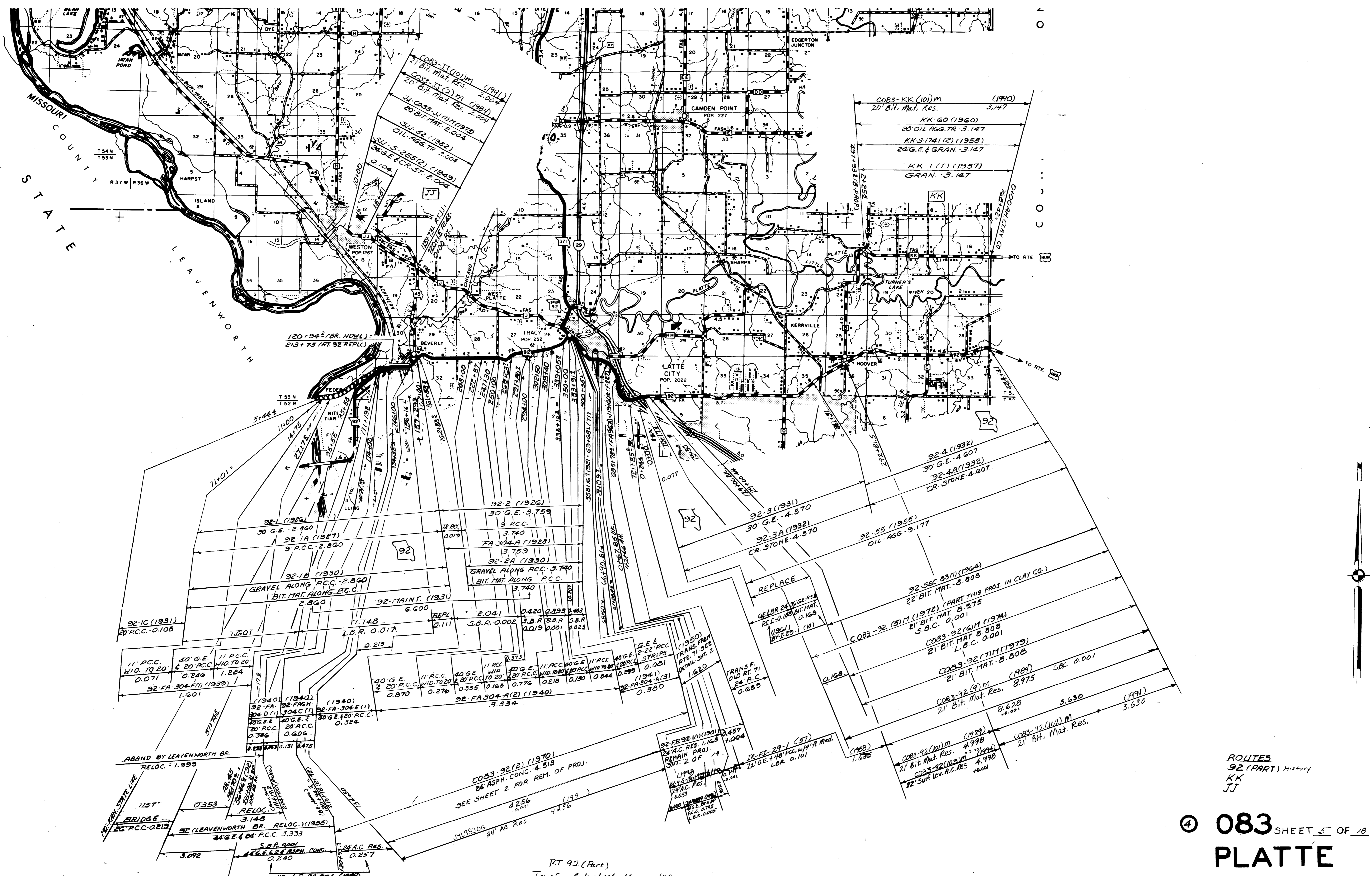
ROUTES: 9
0 Historical





PLATTE 083

4



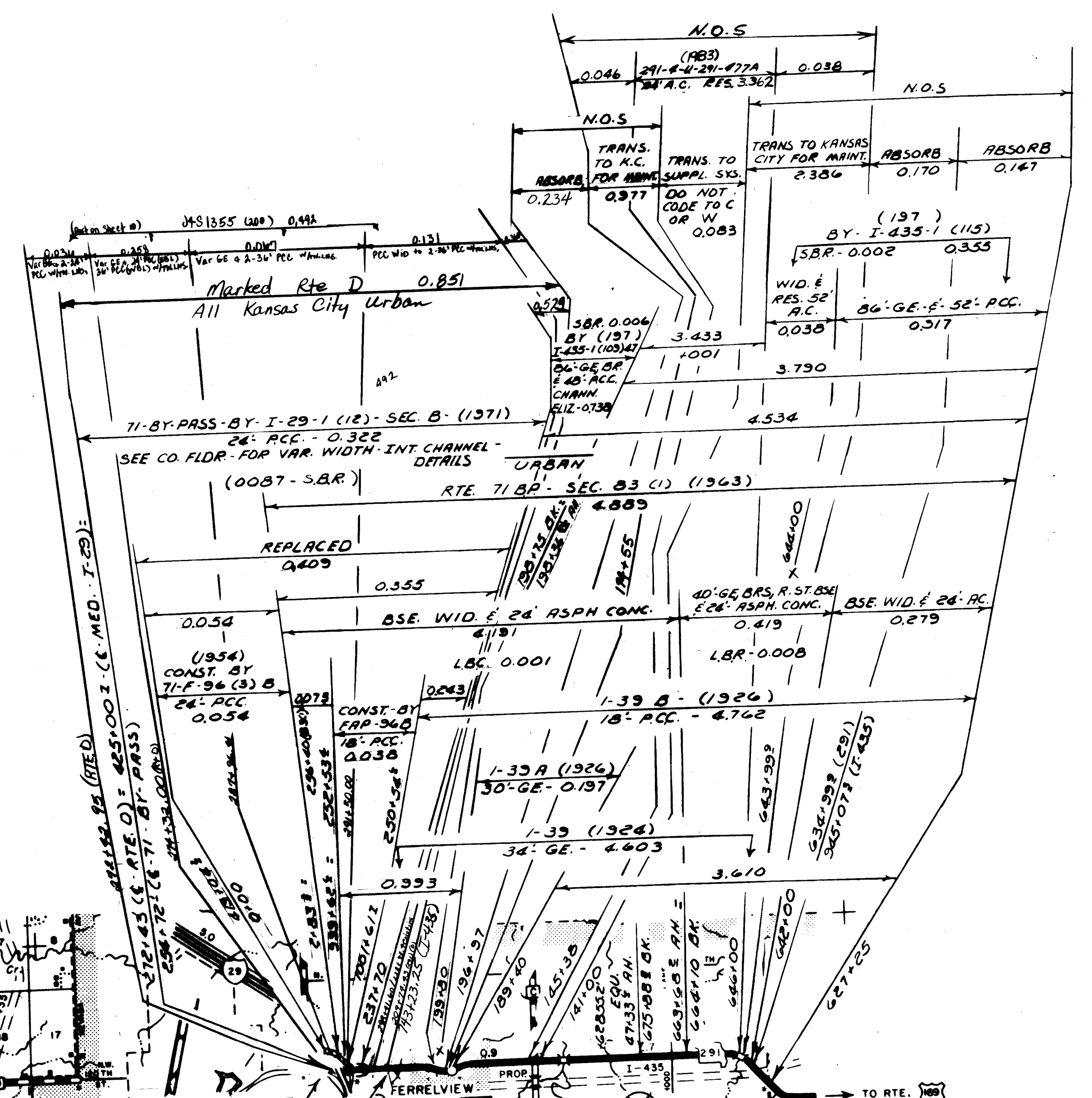
ROUTES
 92 (PART) History
 KK
 JJ

④ 083 SHEET 5 OF 18
 PLATTE

RT 92 (Part)
 Transferred to sheet 16 5/98



C O U

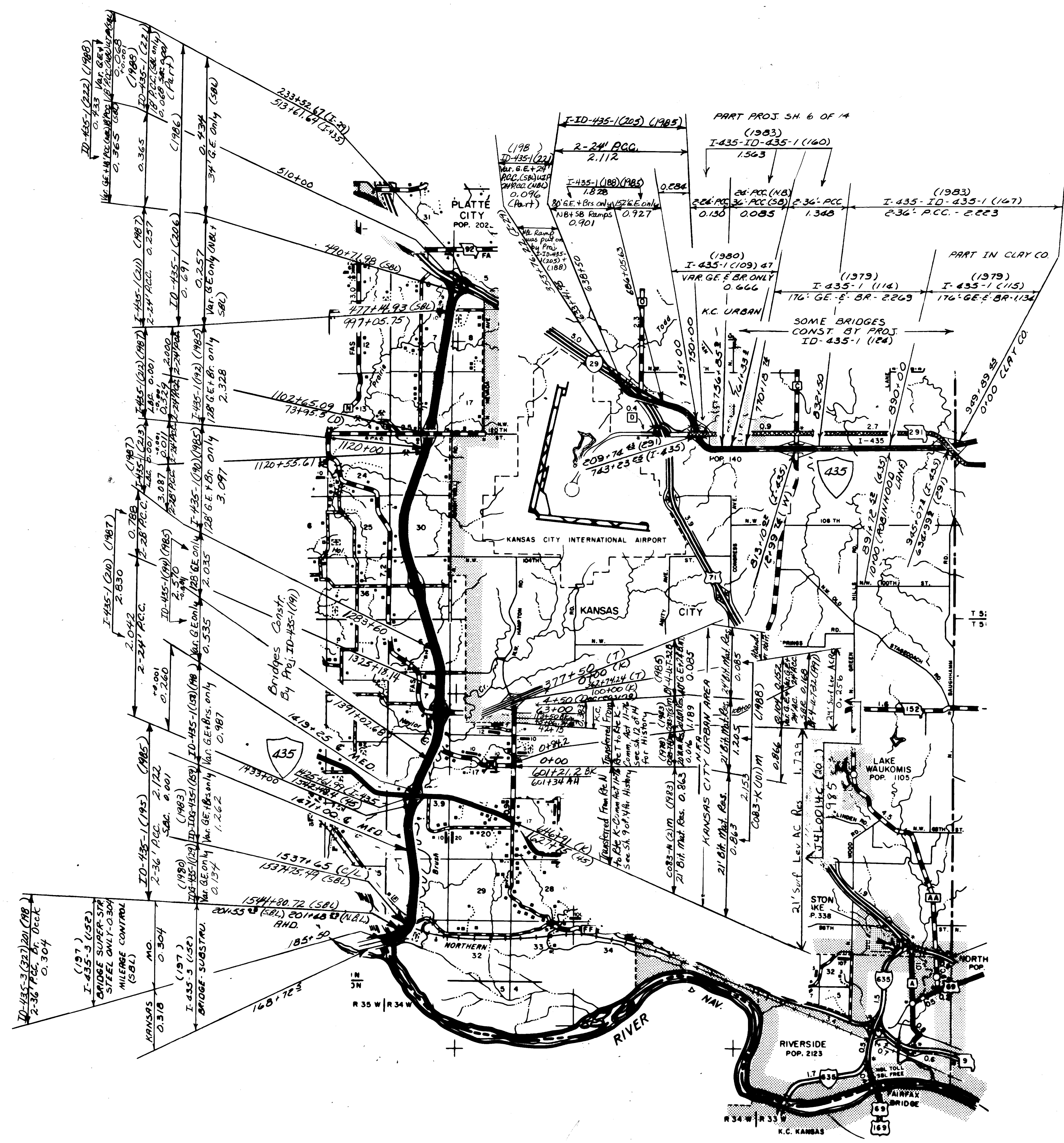
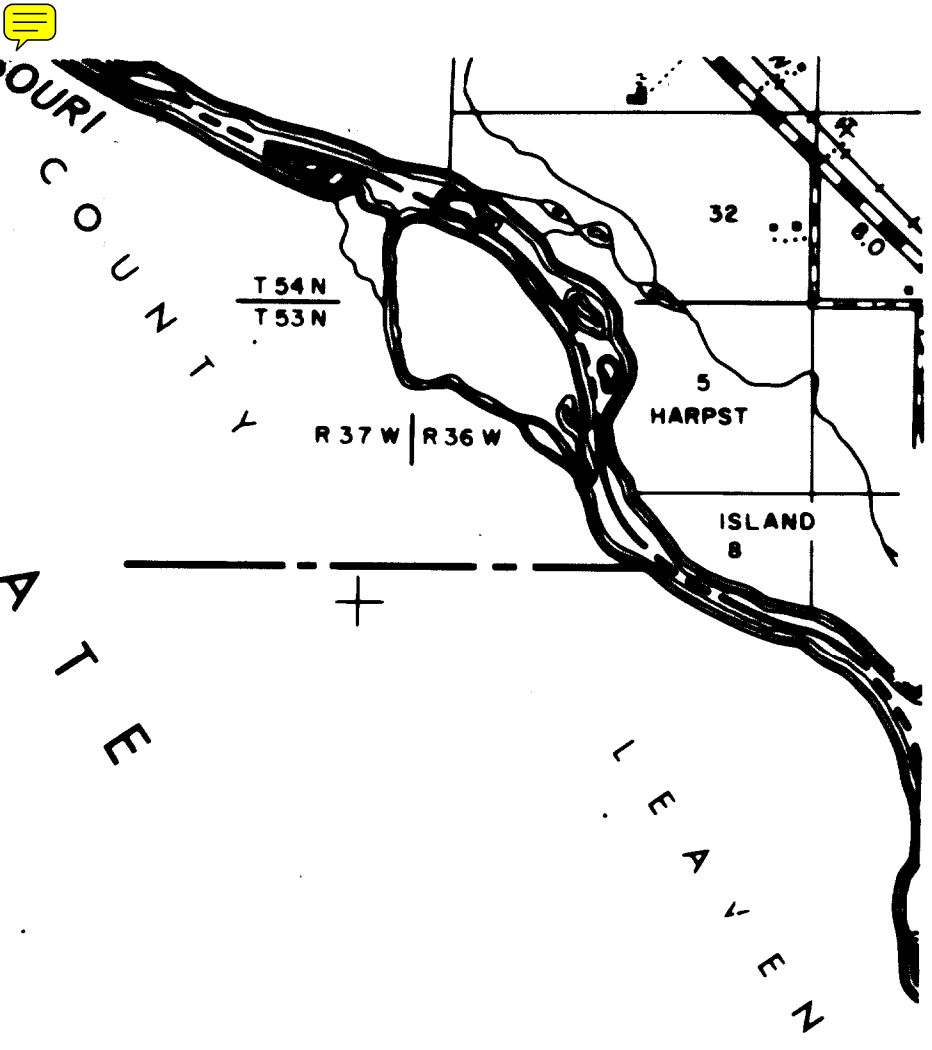


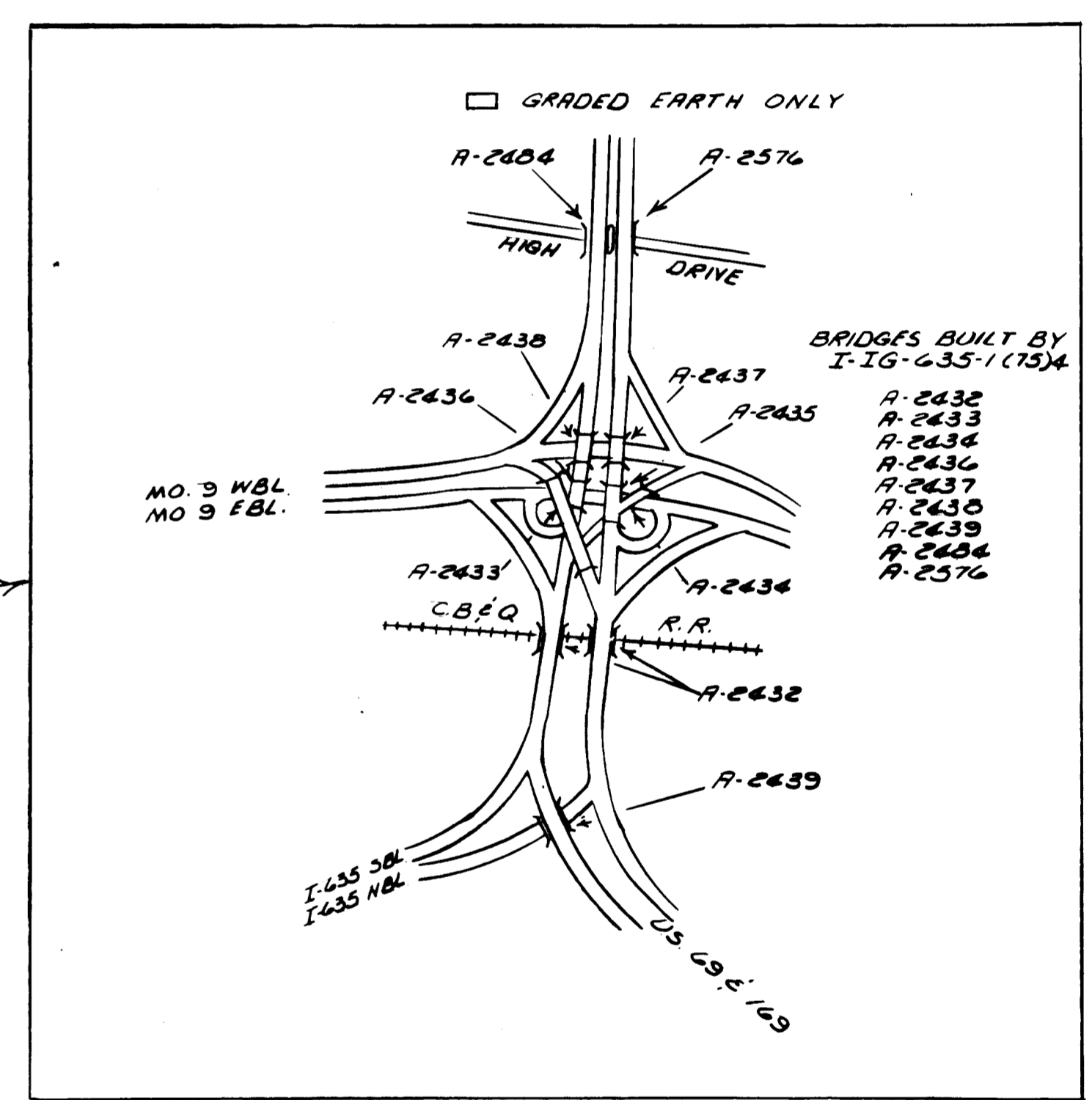
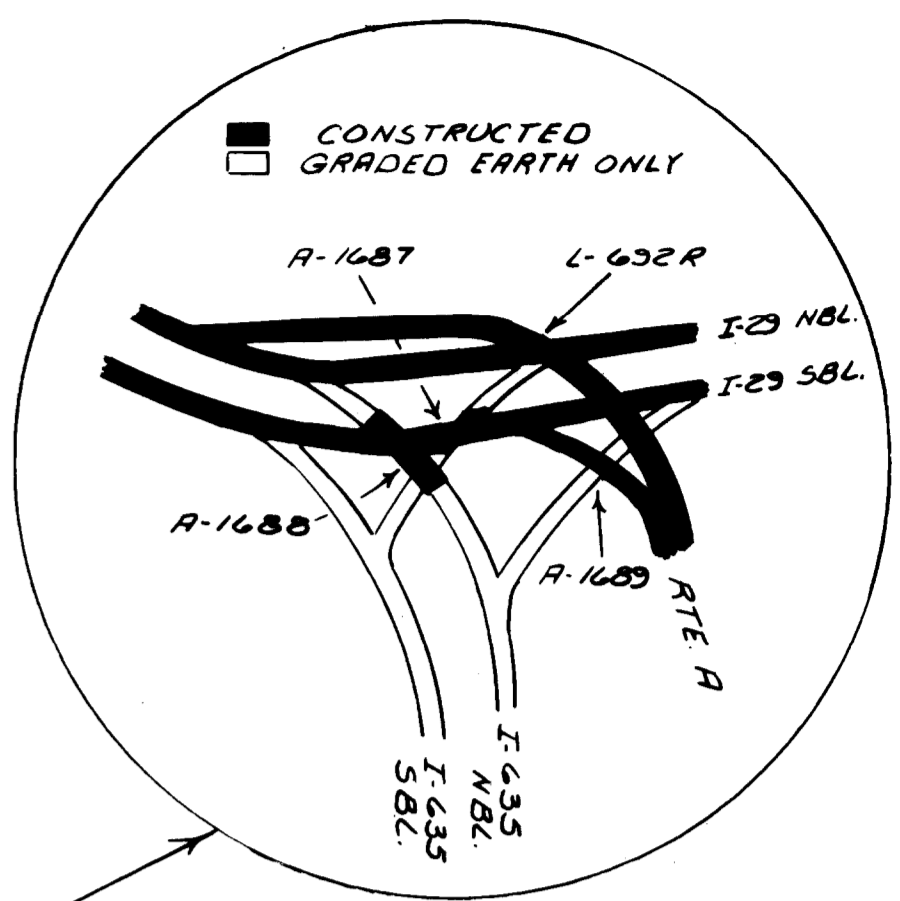
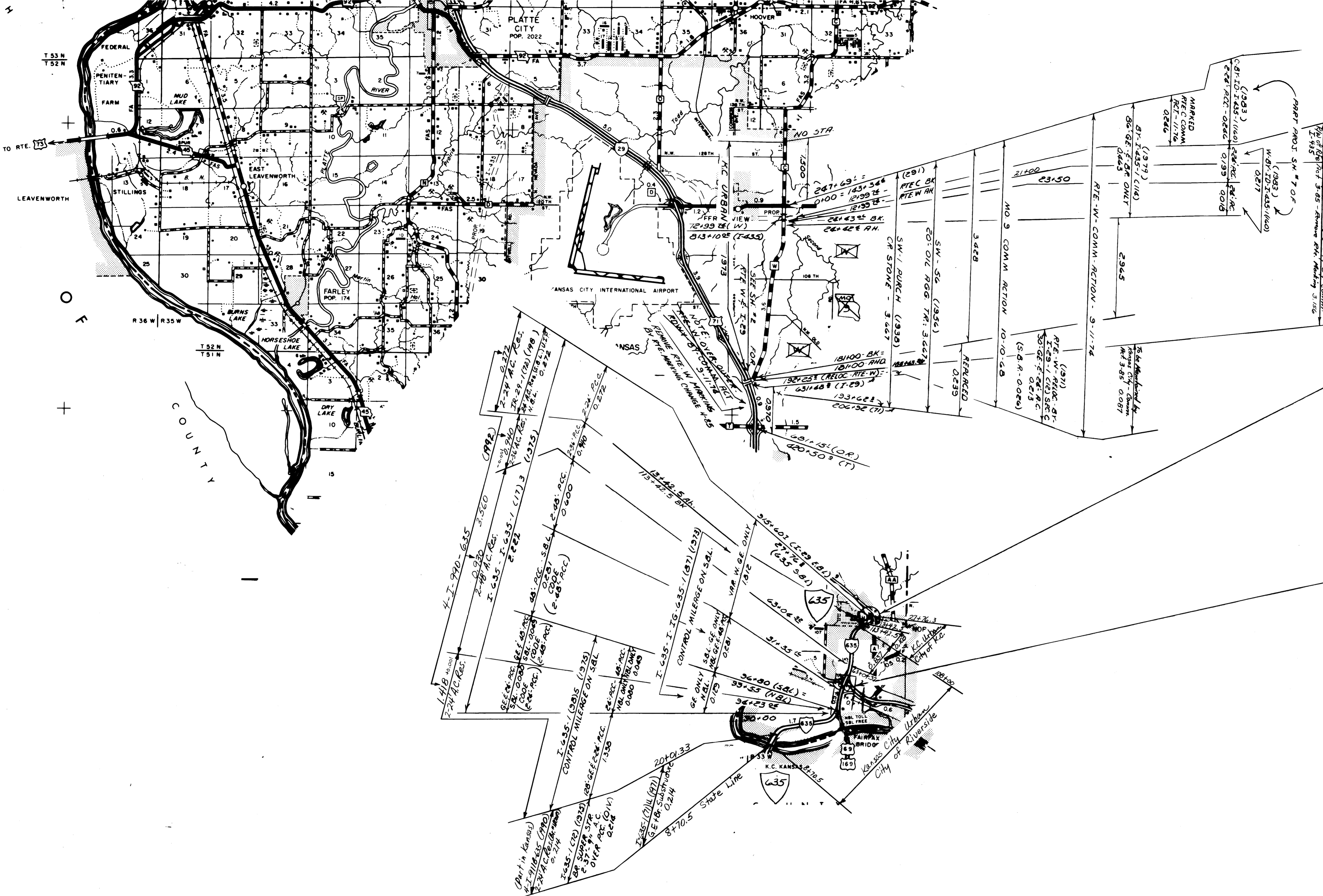
SEE SHEET 13 OF 14 FOR INTERCHANGE DETAILS

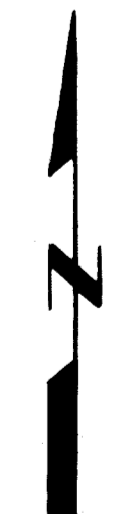
C L A Y

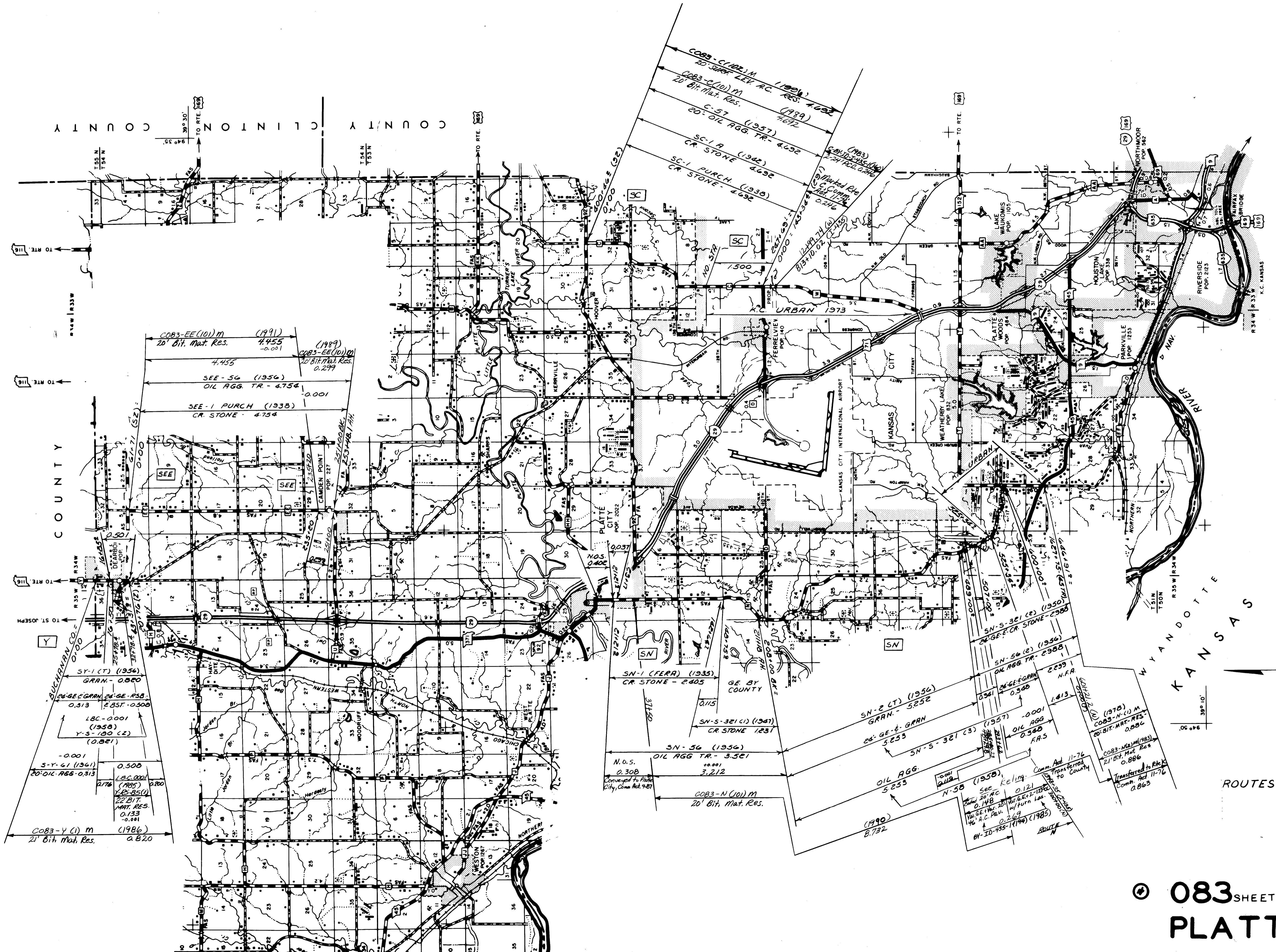
ROUTES: 291 History
M
45 SPURS
D (Part)

083 SHEET 6 OF 18
PLATTE






 ROUTES: I-635
 HISTORICAL - W -



CLINTON COUNTY

COUNTY

WYANDOTTE
KANSAS

COUNTY

TO RTE. 103
TO RTE. 116
TO ST. JOSEPH
TO ST. JOSEPH

TO RTE. 169
TO RTE. 169

ROUTES: C
N
E
Y

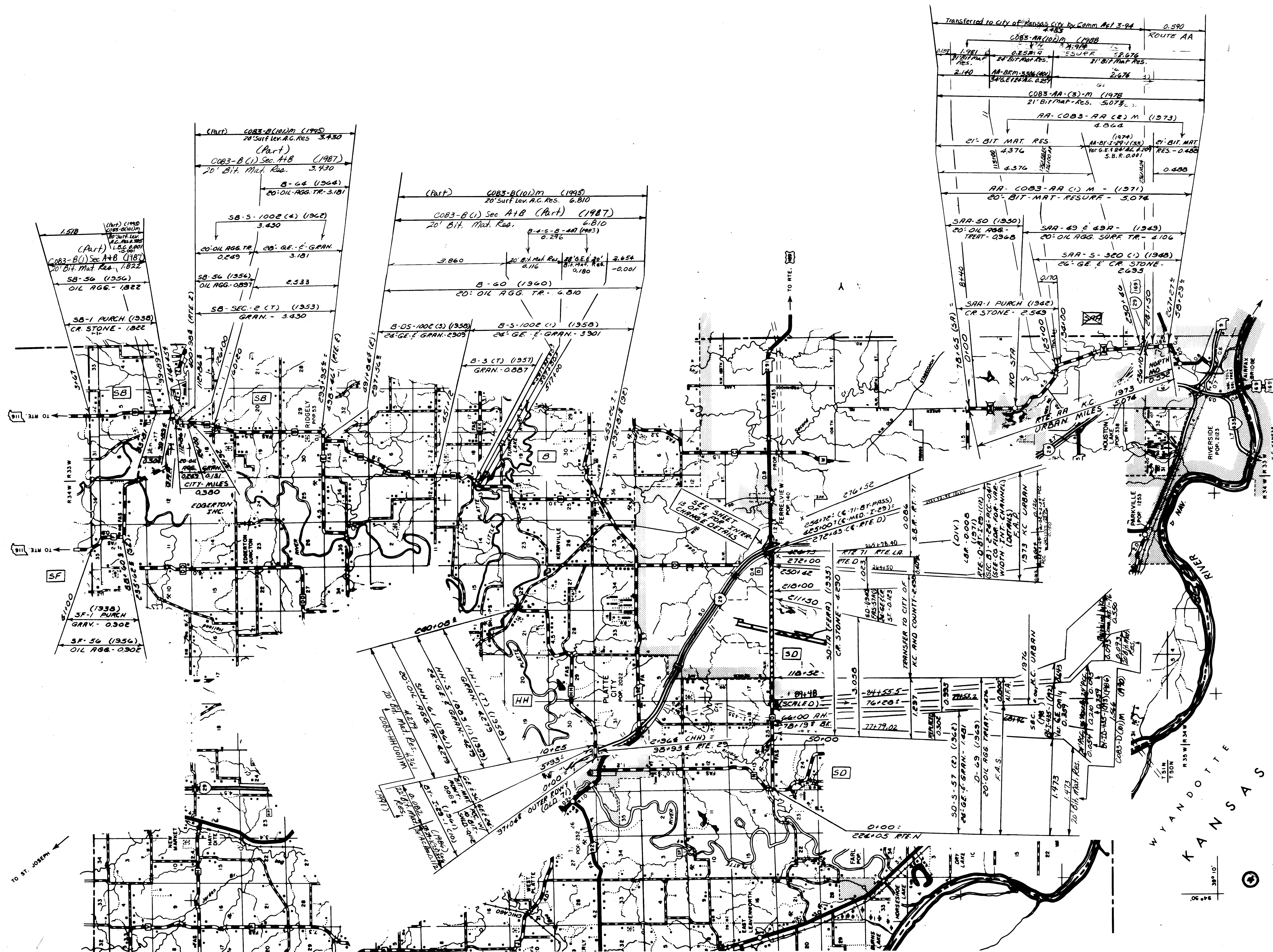
COB3-EE(101) M (1991)
20' Bit. Mat. Res. 4.455
SEE-56 (1956)
OIL AGG. TR. - 4.754
SEE-1 PURCH. (1938)
CR. STONE - 4.754

COB3-Y (1) M (1986)
21' Bit. Mat. Res. 0.820
S-Y-41 (1961)
20' OIL. RES. 0.313
LBC-0001 (1958)
Y-S-100 (2) (0.821)
LBC-0001 (1985)
Y-S-85(1)
22' BIT. MAT. RES. 0.133
0.001

SN-1 (FERA) (1935)
CR. STONE - 2405
SN-56 (1956)
OIL AGG. TR. - 3.521
N.O.S. 0.308
COB3-N (101) M
20' Bit. Mat. Res.

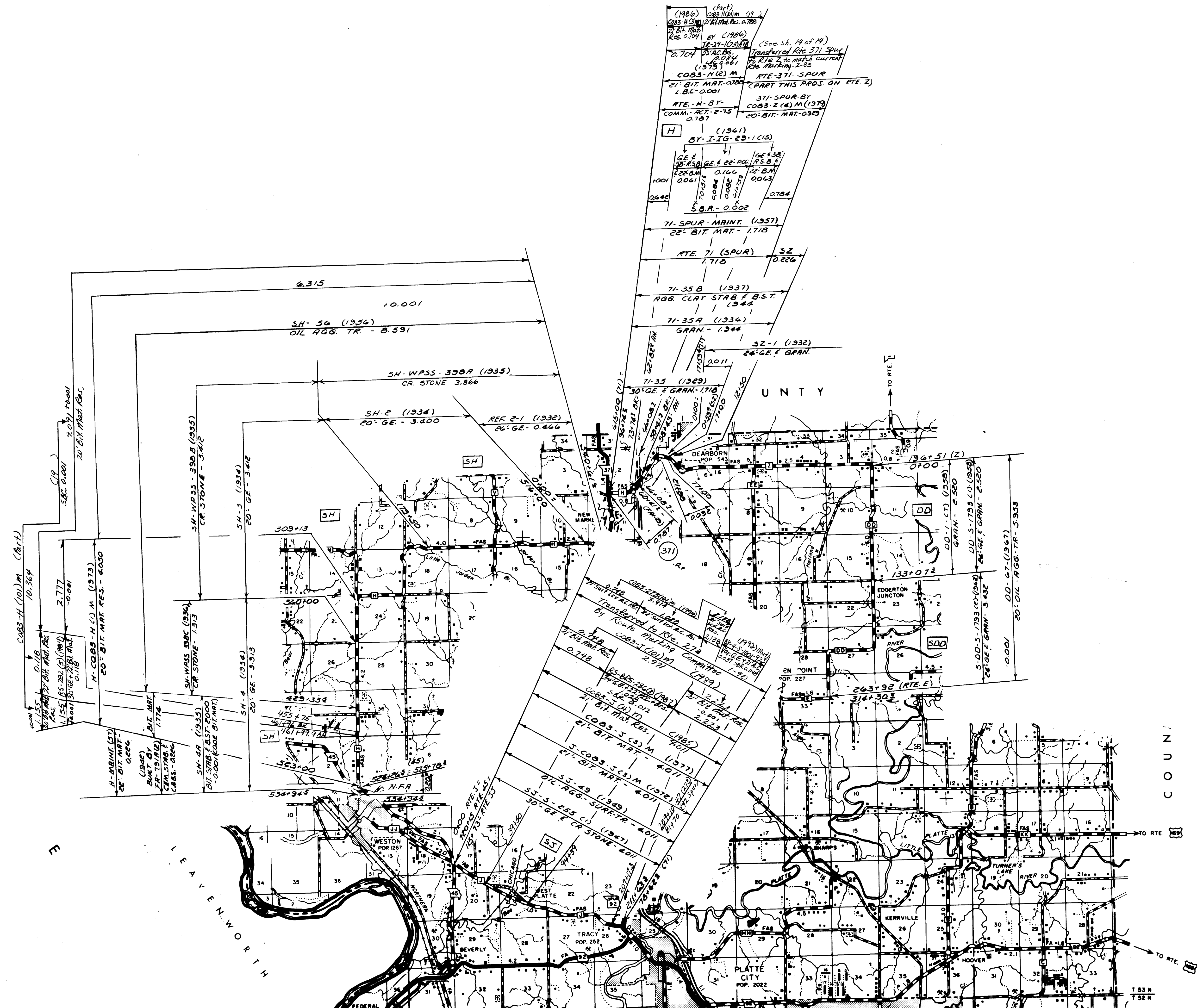
SN-2 (T) (1956)
GRAN. - 5252
SN-S-321 (1) (1947)
CR. STONE 1231
SN-S-321 (2) (1957)
OIL AGG. 5253
SN-S-321 (3)
OIL AGG. 5253
N-58 (1958)
See Kellogg
0.148
0.121
0.269
BY-ID-435-1(1944) (1985)

SN-S-321 (2) (1950)
24' GE. CR. STONE - 2388
SN-56 (2) (1956)
OIL AGG. TR. - 2388
SN-56 (1)
N.F.A. 2.299
COB3-N (1) M (1978)
21' BIT. MAT. RES. 0.886
COB3-N (2) M (1983)
21' BIT. MAT. RES. 0.886
Transferred to Rte. X
Comm. Act 11-76
0.863



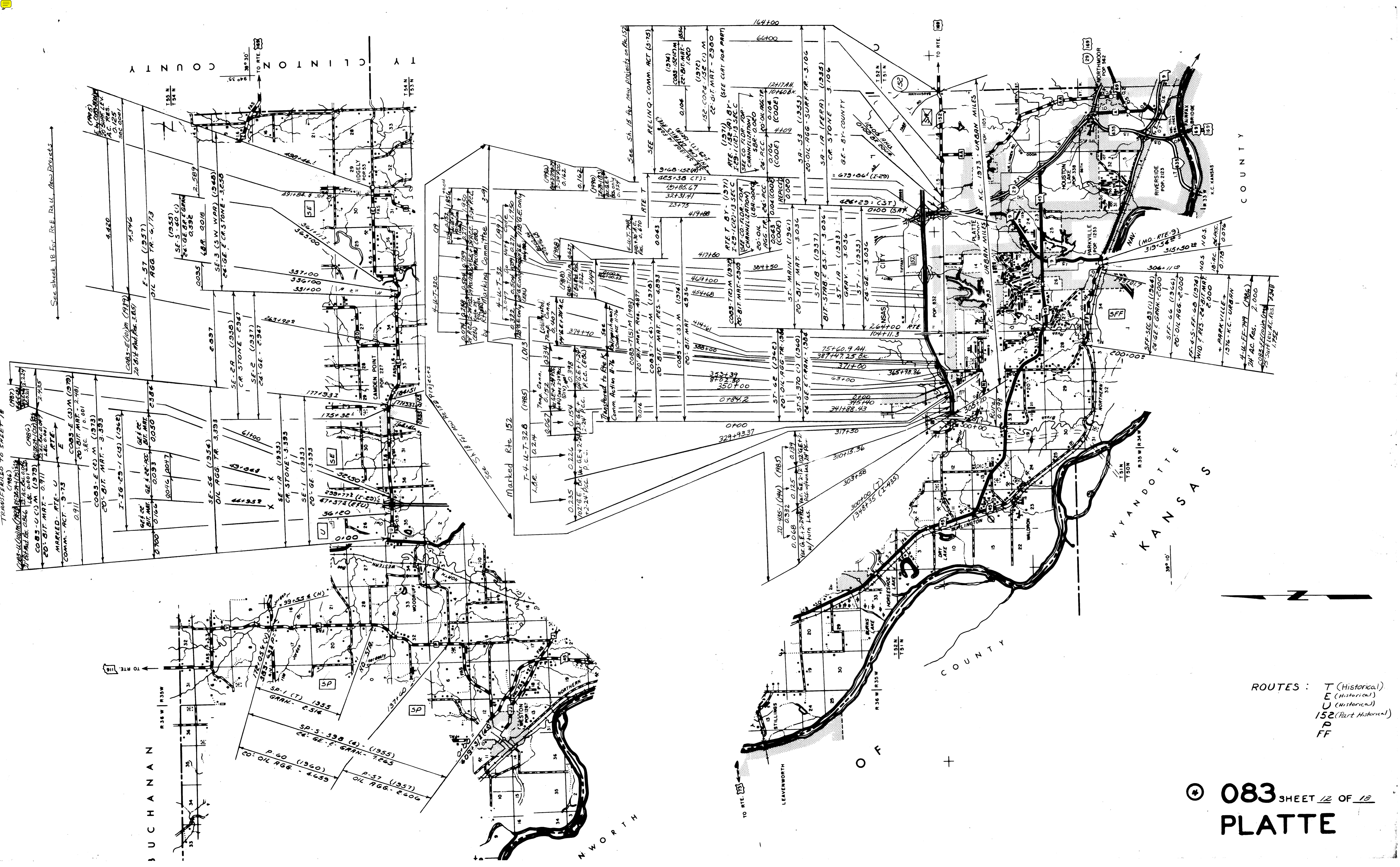
ROUTES: F
B
AA
HH
D (Part)

© 083 SHEET 10 OF 18
PLATTE



ROUTES : 273 (PART) (J)
 DD
 H
 371 SPUR (Z)
 J HISTORY (1773)

083 SHEET 11 OF 19
 PLATTE

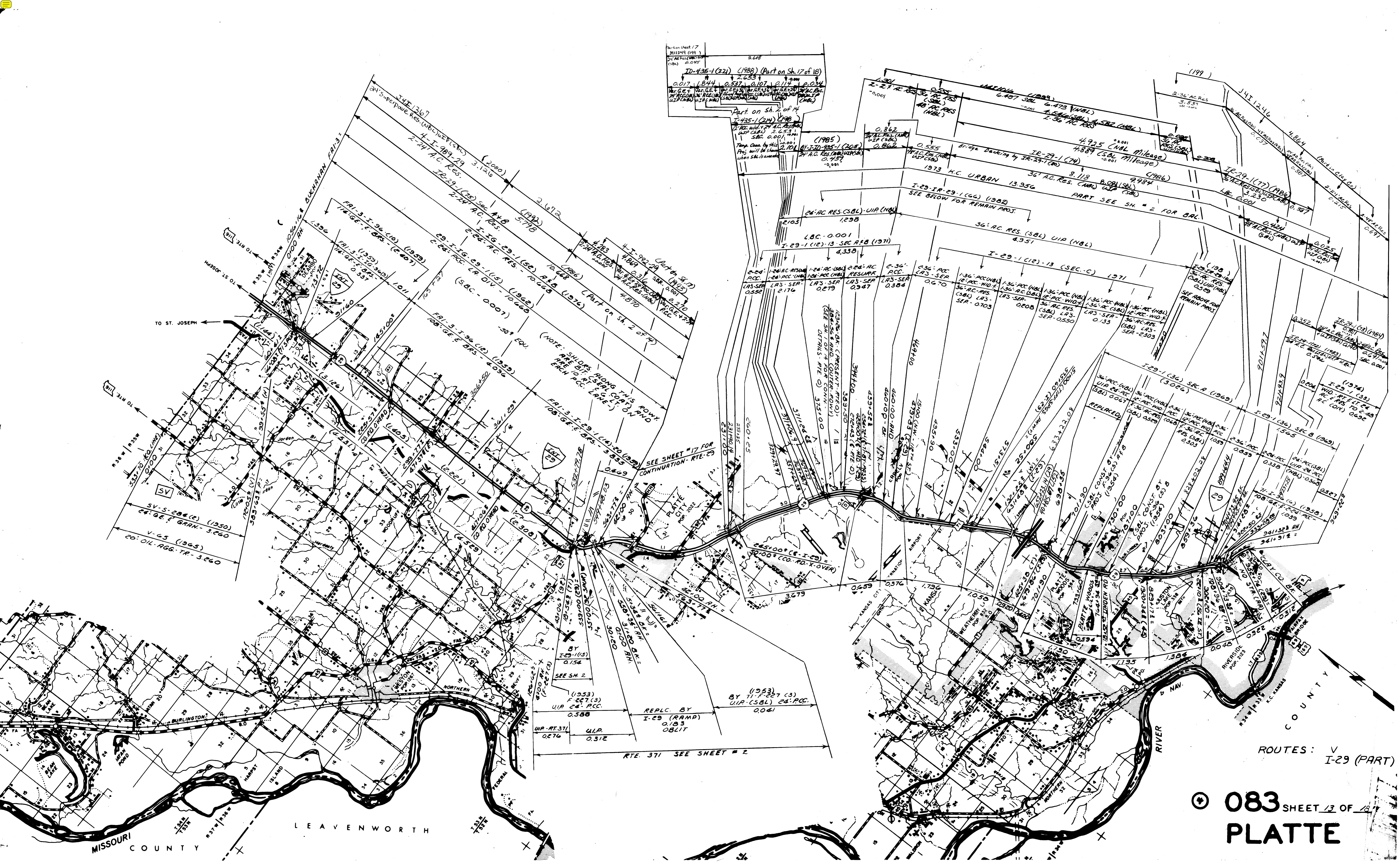


See sheet 18 For R.E. Rel. New Projects

TRANSFERRED TO SHEET 18

ROUTES : T (Historical)
 E (Historical)
 U (Historical)
 152 (Part Historical)
 P
 FF

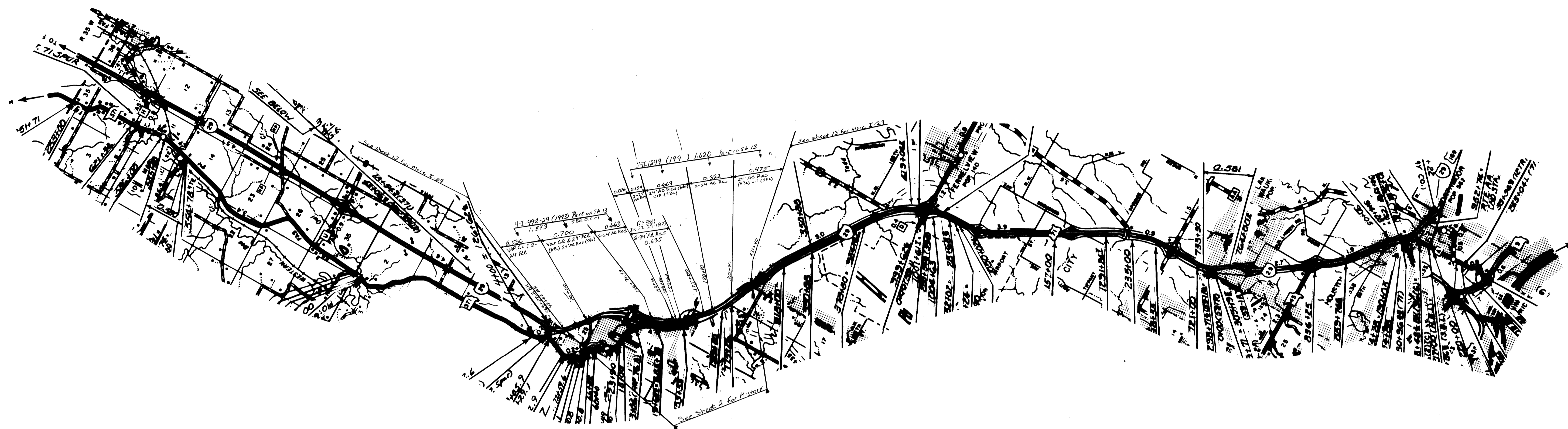
083 SHEET 12 OF 15
 PLATTE



Part on sheet 17
 ID-435-1 (22) (1988) (Part on Sh. 17 of 18)
 0.017, 1.844, 0.537, 0.107, 0.114, 0.034
 Part on Sh. 2 of 4
 I-435-1 (21) (1988)
 2.653
 1.985
 2.101
 0.157
 0.001

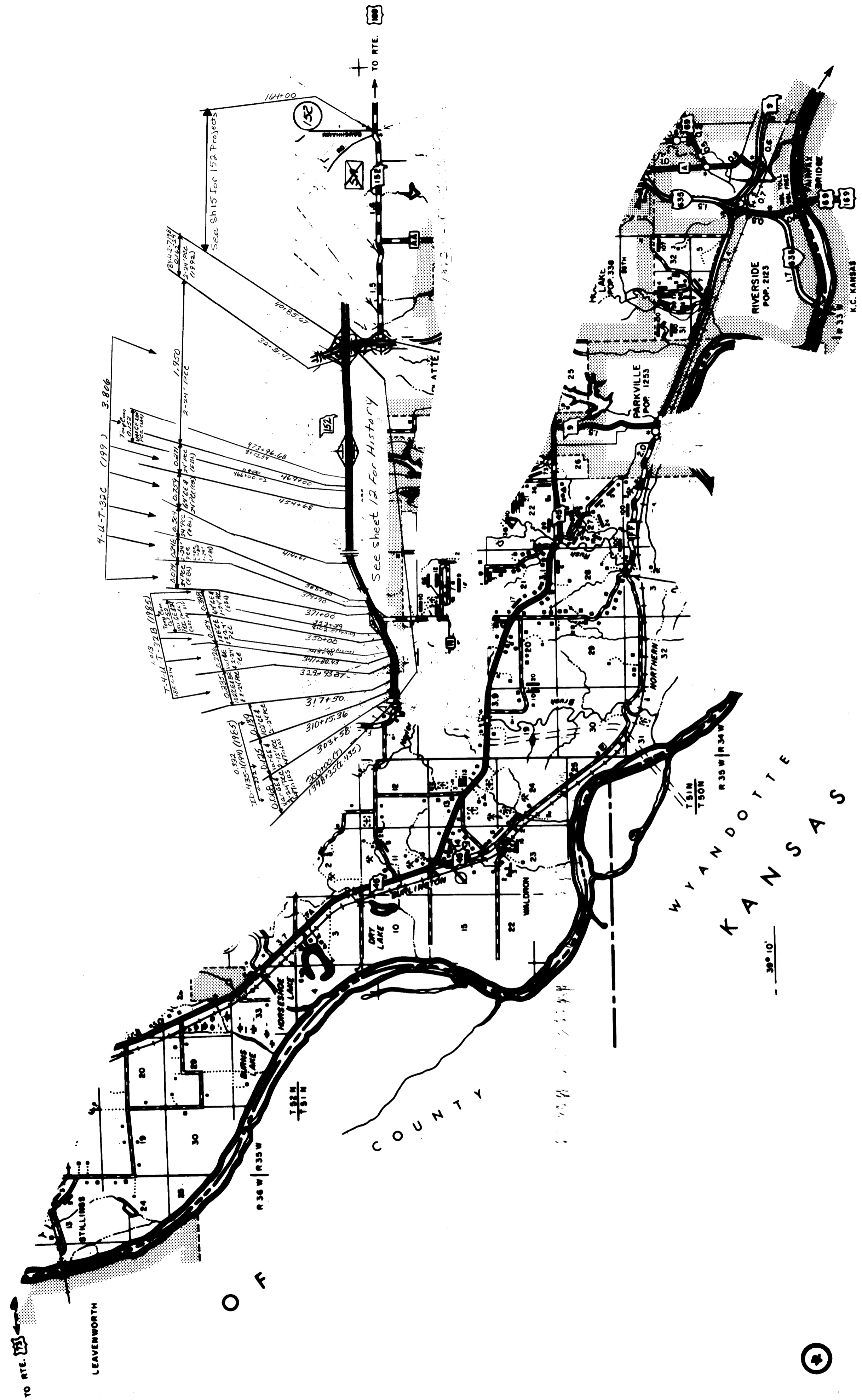
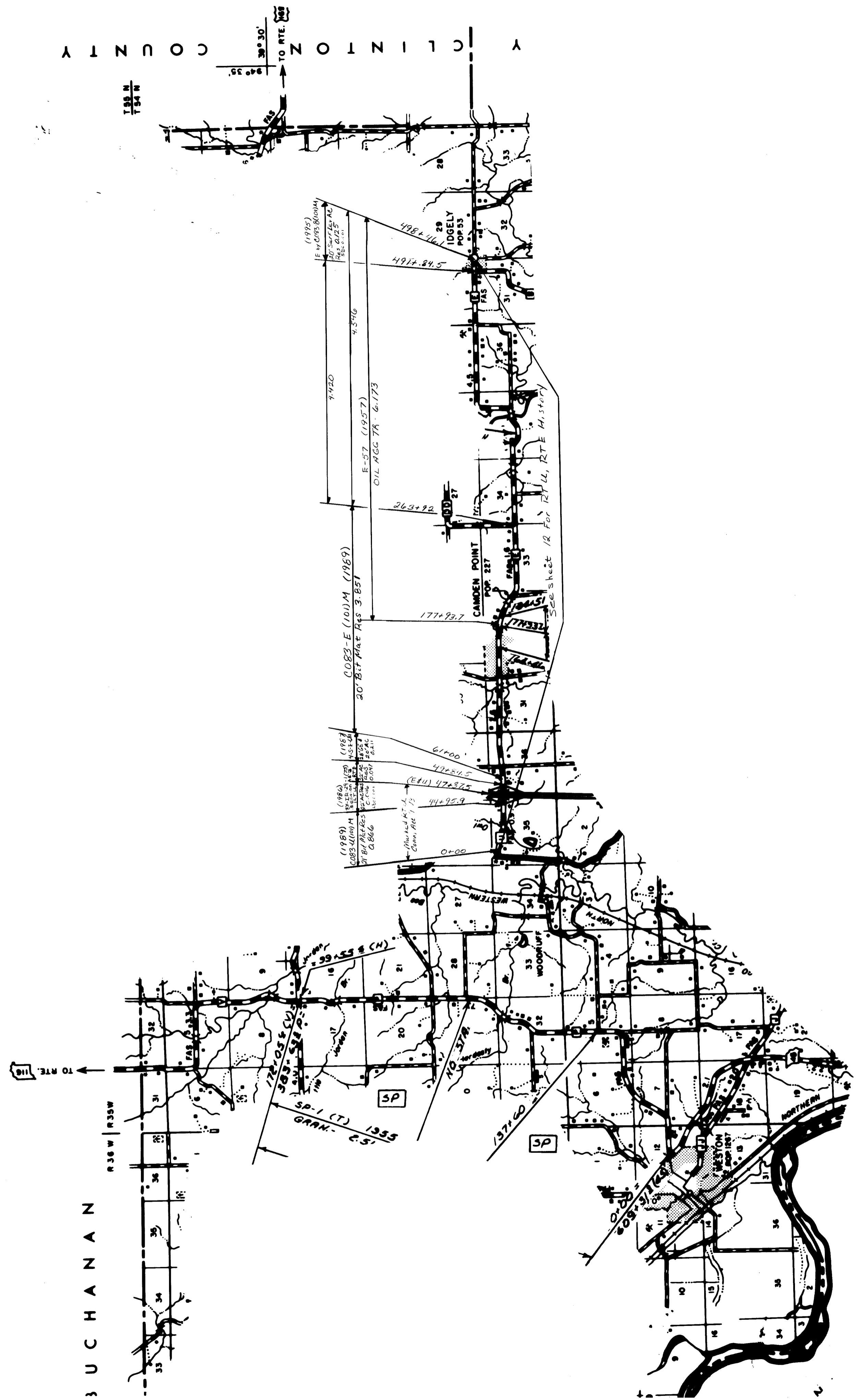
SEE SHEET # 17 FOR
 CONTINUATION - RTE. 29

RTE. 371 SEE SHEET # 2



I-29 (PART)

④ 083 SHEET 17 OF 18
PLATTE



ROUTES :
 E
 U
 152 (Part)

083 SHEET 12 OF 18
 PLATTE