

ROUTES: 6 (PART)  
15

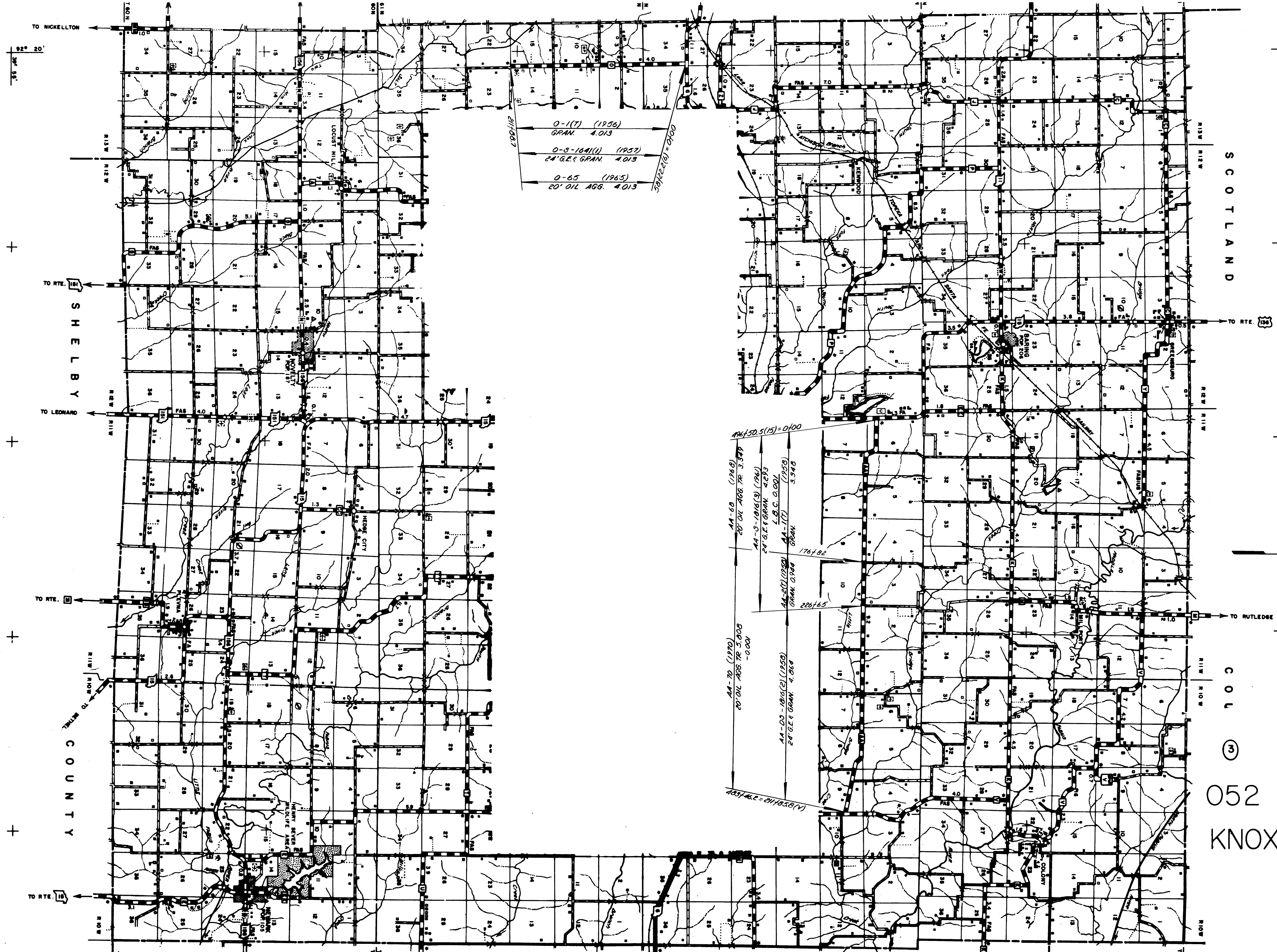
③  
052 SHEET 2 OF 10  
KNOX











0-1(T) (1956)  
 GRAN. 4.013  
 0-8-164(1) (1957)  
 24' G.E.F. GRAN. 4.013  
 0-65 (1965)  
 20' OIL AGG. 4.013

466150.5(15) = 0100  
 AA-68 (1968)  
 20' OIL AGG. TR. 3.378  
 AA-9-1016(3) (1961)  
 24' G.E.F. GRAN. 4.233  
 L.B.C. 0.001  
 AA-1(T) (1958)  
 GRAN. 0.768  
 176182  
 226165  
 AA-70 (1970)  
 20' OIL AGG. TR. 5.808  
 -0.001  
 AA-03-1016(2) (1958)  
 24' G.E.F. GRAN. 4.864  
 (1958) 112 = 279.152

SCOTTLAND

COL

052  
KNOX

ROUTES 0  
AA

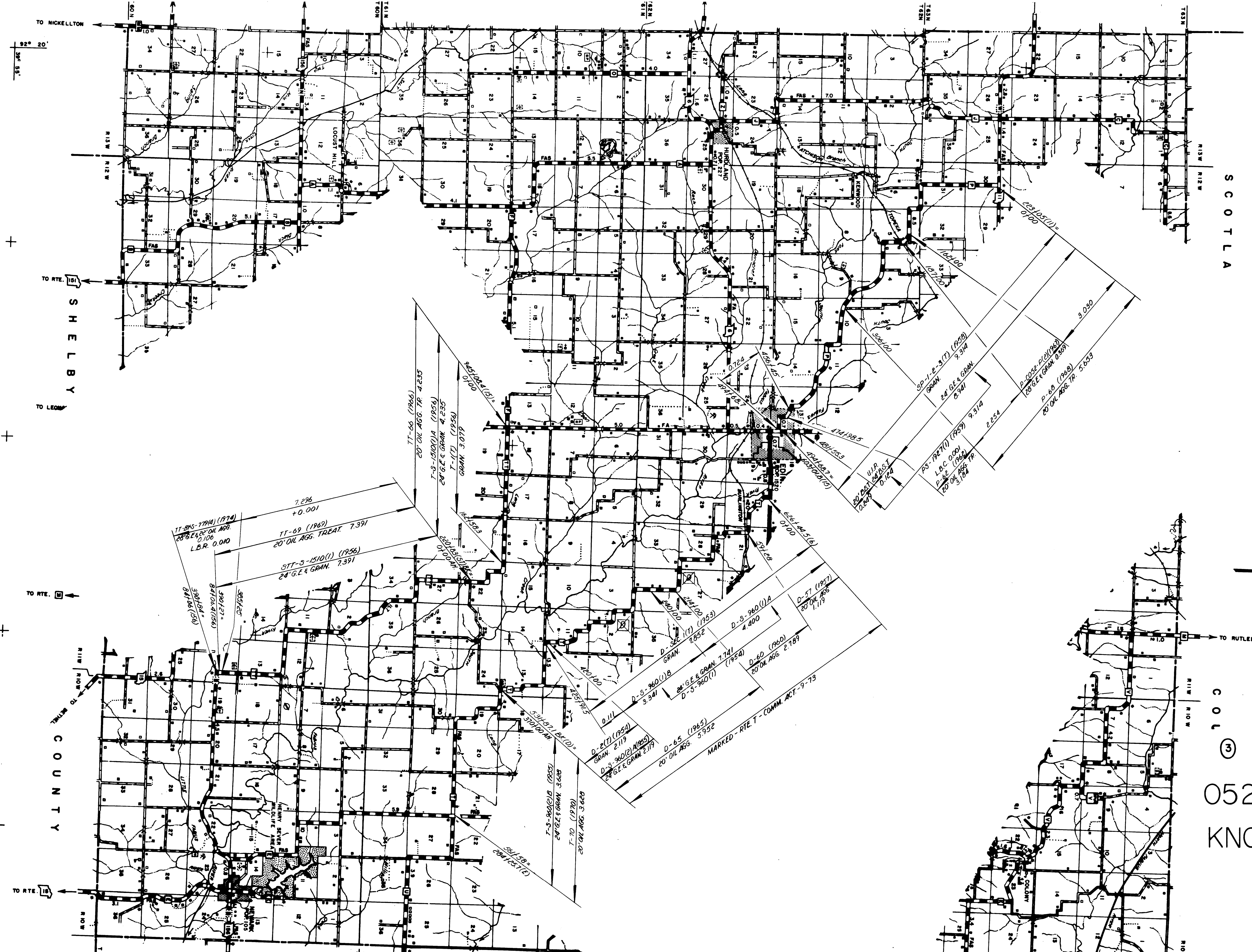
SHEET 7 OF 10



TO NICKELTON  
 TO RTE. 151  
 SHELBY  
 TO LEONAS  
 TO RTE. 10  
 COUNTY  
 TO RTE. 10

TO RTE. 136

TO RUTLEDGE



COUNTY

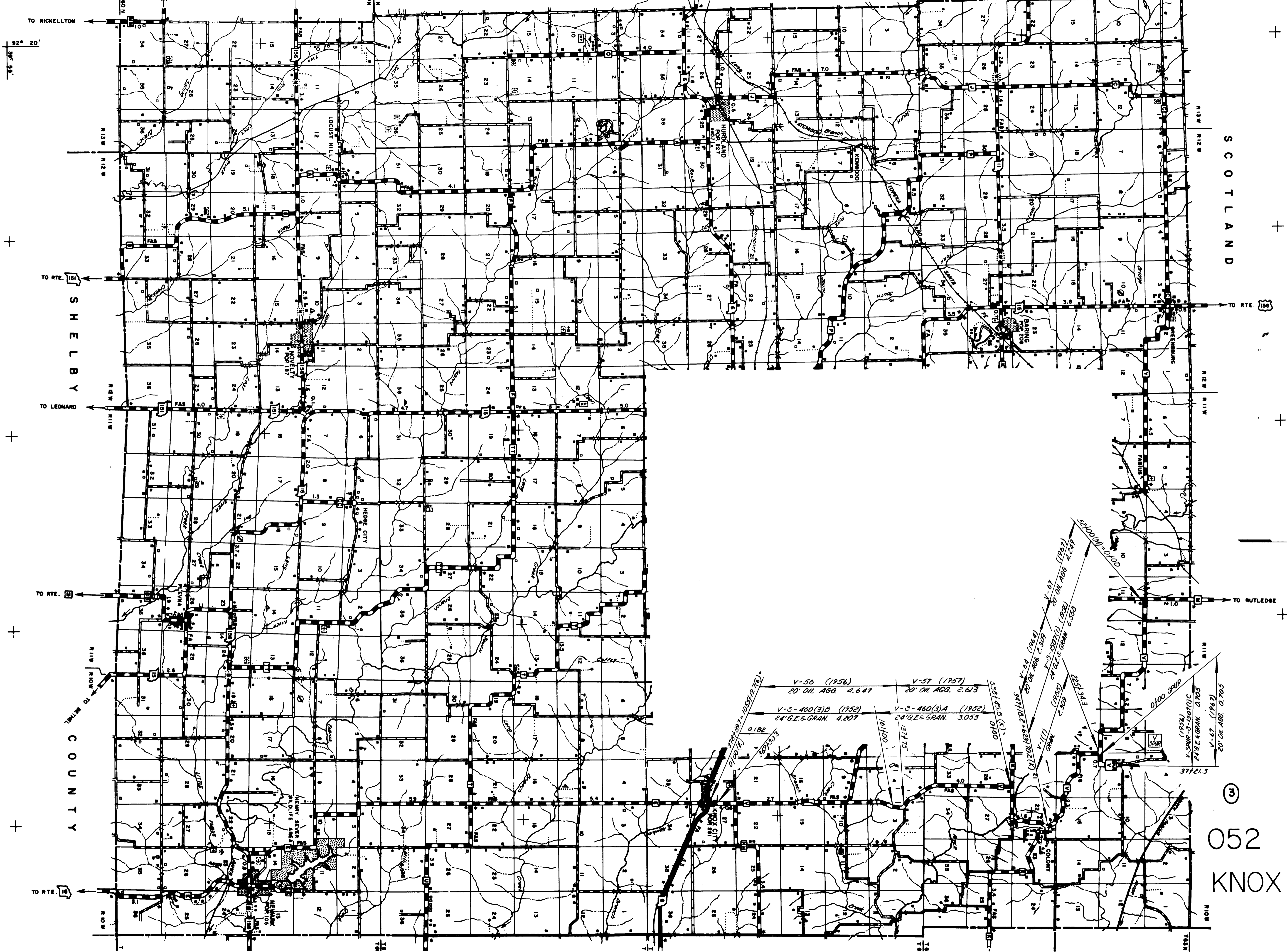
COL  
③

052  
KNOX

ROUTES  
P  
T  
TT

SHEET 8 OF 10





TO NICKELTON  
92° 20'  
36' 55"

TO RTE. 151  
SHELBY

TO LEONARD

TO RTE. 152

TO RTE. 153  
COUNTY

TO RTE. 154

SCOTLAND



TO RTE. 156

ROUTES V  
V SPUR

052  
KNOX

SHEET 9 OF 10

V-50 (1956) 20' OIL AGG. 4.647  
 V-57 (1957) 20' OIL AGG. 2.613  
 V-S-460(3)B (1952) 24' G.E.E. GRAN. 4.207  
 V-S-460(3)A (1952) 24' G.E.E. GRAN. 3.053  
 5381/43.8 (K) = 0.182  
 161/100  
 571/15  
 3471/10.2 = 0.289  
 3471/10.2 (K) = 0.289  
 20' OIL AGG. 2.309  
 24' G.E.E. GRAN. 0.833  
 20' OIL AGG. 2.249  
 24' G.E.E. GRAN. 0.833  
 20' OIL AGG. 0.705  
 24' G.E.E. GRAN. 0.705  
 20' OIL AGG. 0.705  
 24' G.E.E. GRAN. 0.705

