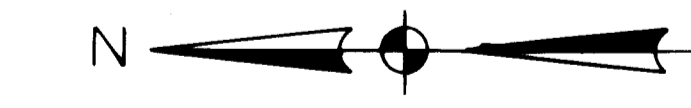
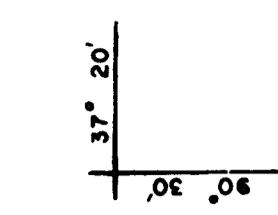


MADIS

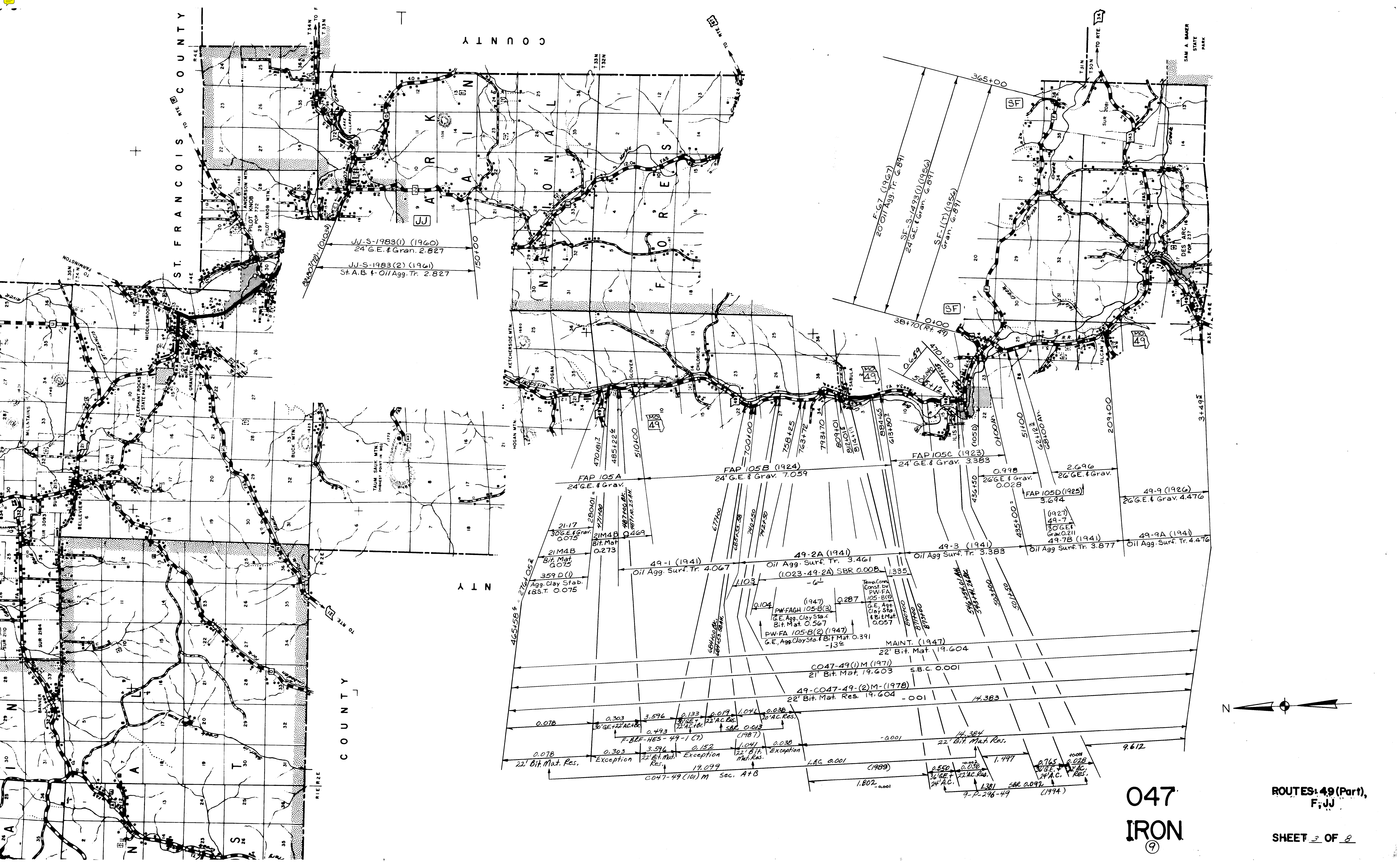


J N T Y

C O U N T Y

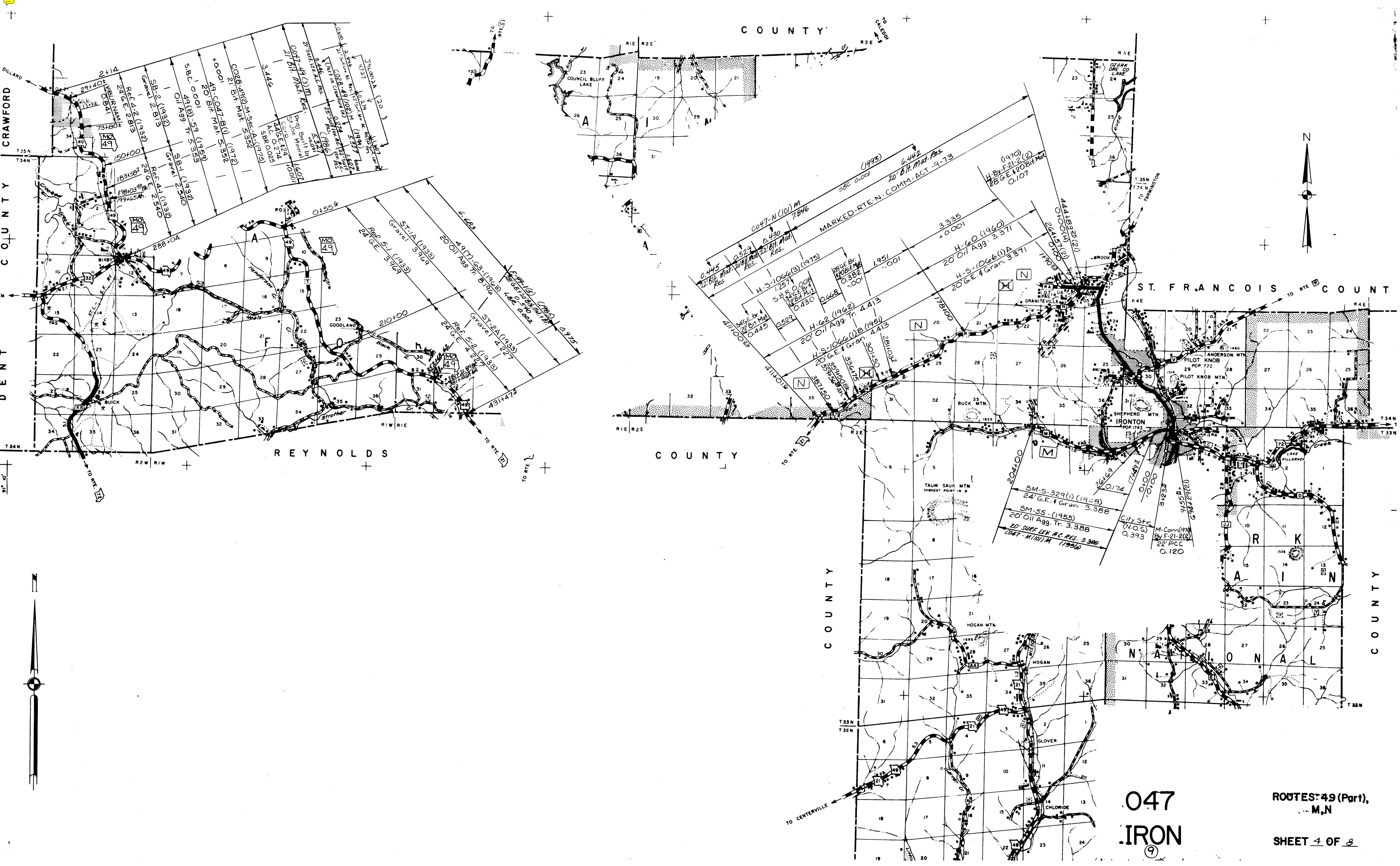
047
IRON
9

ROUTES: 143, E, K
SHEET 7 OF 8



047
IRON
⑨

ROUTES: 49 (Part),
F, JJ
SHEET 3 OF 8



COUNTY

ST. FRANCOIS COUNTY

COUNTY

REYNOLDS

COUNTY

COUNTY

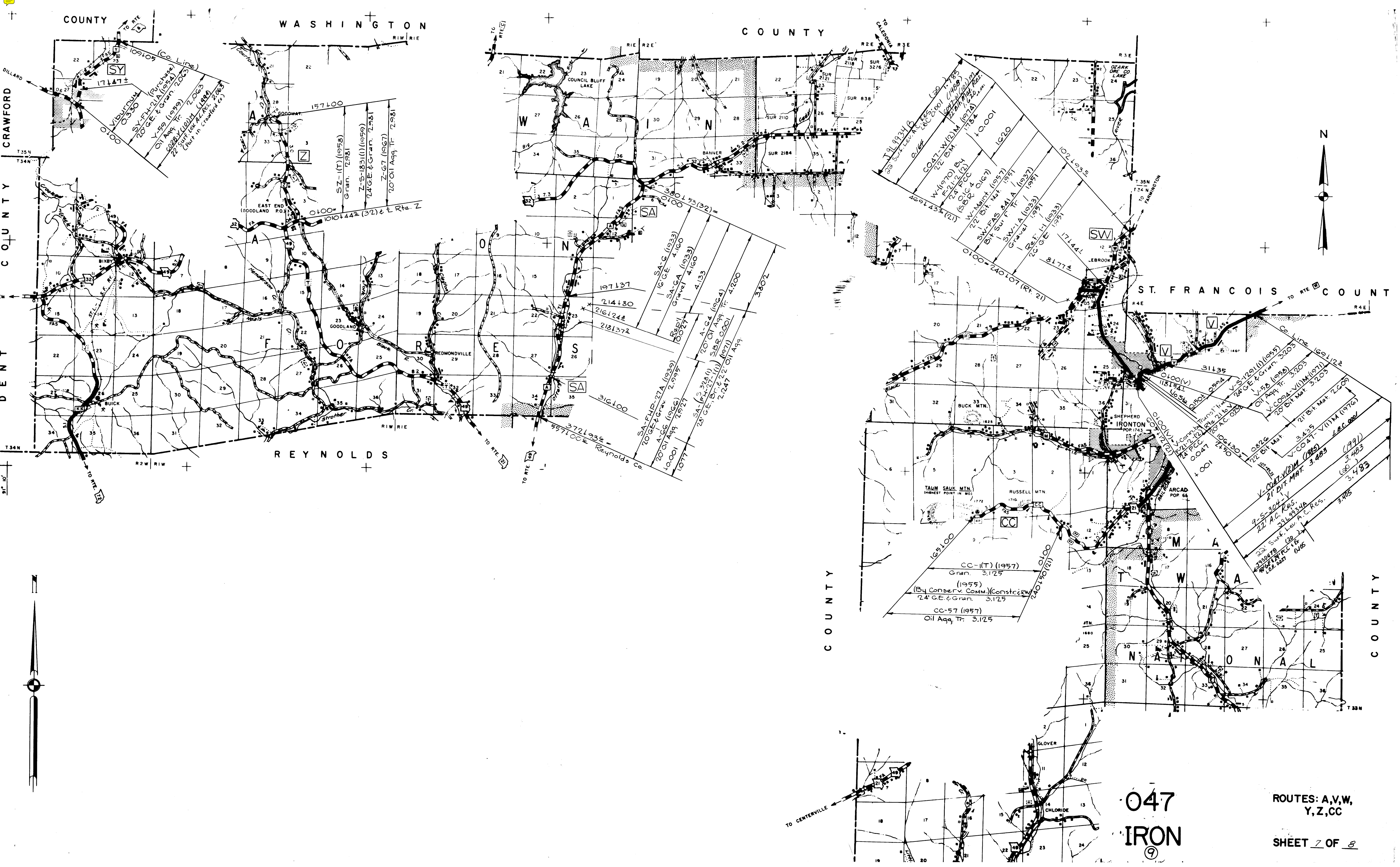
047

IRON

9

ROUTES 49 (Part), M, N

SHEET 4 OF 8



CRAWFORD COUNTY

WASHINGTON COUNTY

COUNTY

ST. FRANCOIS COUNTY

REYNOLDS COUNTY

COUNTY

COUNTY

047

IRON

9

ROUTES: A, V, W,
Y, Z, CC

SHEET 2 OF 8

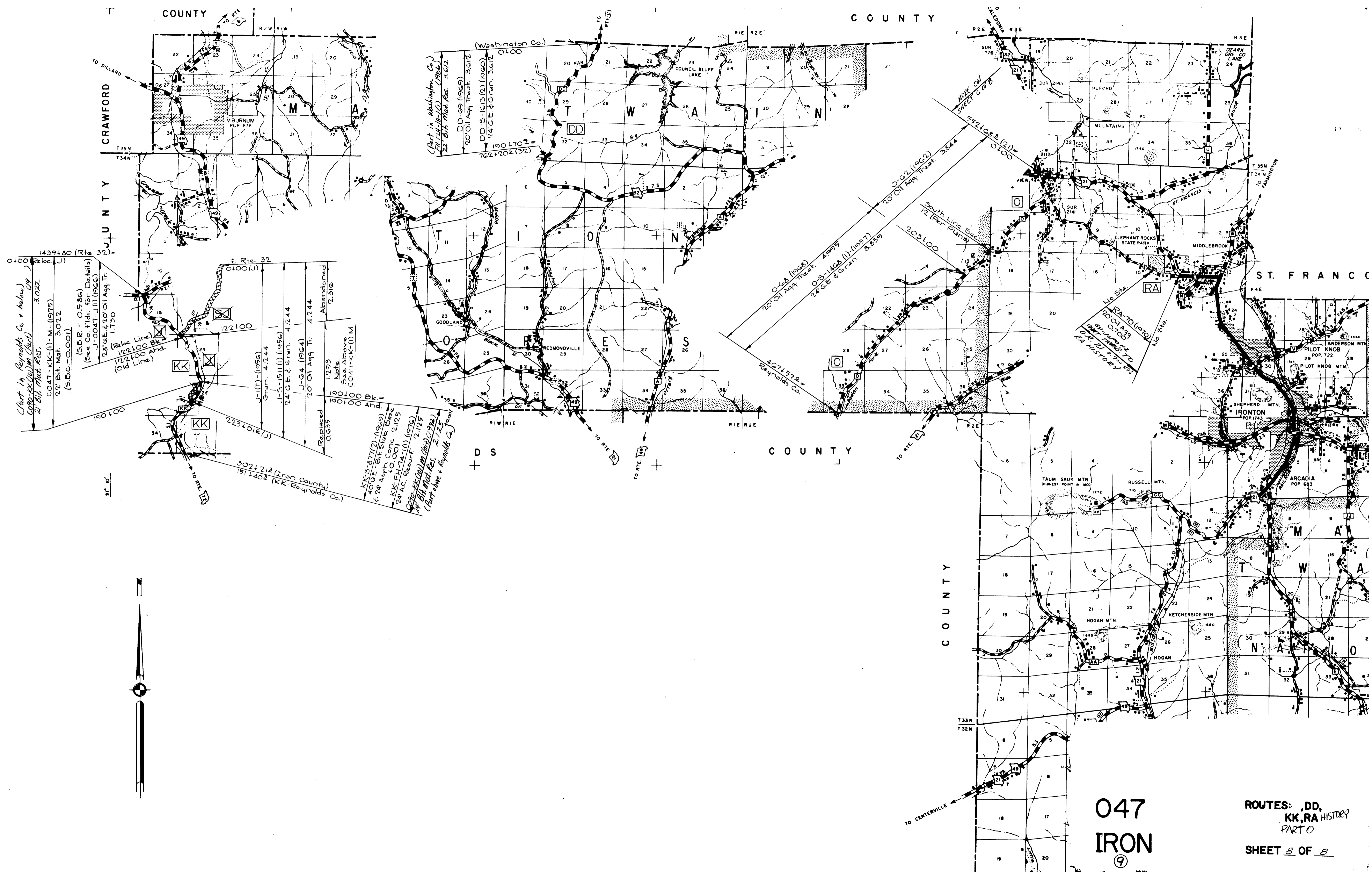


Chart in Reynolds Co. & below
 CO47-KK(1)M-1975
 21 Bk. Mat. Res. 3.022
 (S.B.C.-0.001)

(Reloc. Line)
 122+00 Bk.
 122+00 Ahd.
 (Old Line)

1439+80 (Rte. 32)
 0+00 (Loc. J)

122+00 (J)

1293
 Note
 See Above
 CO47-KK-1) M

Replaced
 0.639

190+00 Bk.
 190+00 Ahd.

J-1(T)-(1956)
 Gran. 4.244

J-S-15(1) (1956)
 24' GE & Gran. 4.244

J-G-4 (1964)
 20' Oil Agg. Tr. 4.244

Abandoned
 7.316

302+21.2 (Iron County)
 191+40.2 (KK-Reynolds Co.)

(Part in Washington Co.)
 FE-EL-18-10 (1986)
 22' Bk. Mat. Res. 3.672

DD-09 (1969)
 20' Oil Agg. Treat. 3.672

DD-S-16(3) (2) (1960)
 24' GE & Gran. 3.672

762+20.2 (32)

190+70.2

O-G-8 (1968)
 20' Oil Agg. Treat. 4.995

O-S-14(8) (1) (1971)
 24' GE & Gran. 8.359

467+57.2
 Reynolds Co.

0+02 (1962)
 20' Oil Agg. Treat. 3.844

552+68.8 (21)
 0+00

203+00

South Line Sec.
 12 (Per Plans)

RA-70 (1970)
 20' Oil Agg.
 21' Bk. Mat. Res. 2.125
 Chart above & Reynolds Co.

047
 IRON
 9

ROUTES: DD,
 KK, RA HISTORY
 PART 0
 SHEET 8 OF 8