



State of Missouri Bridges

**Dennis Heckman
State Bridge Engineer
Missouri Department of Transportation**

February 18, 2016

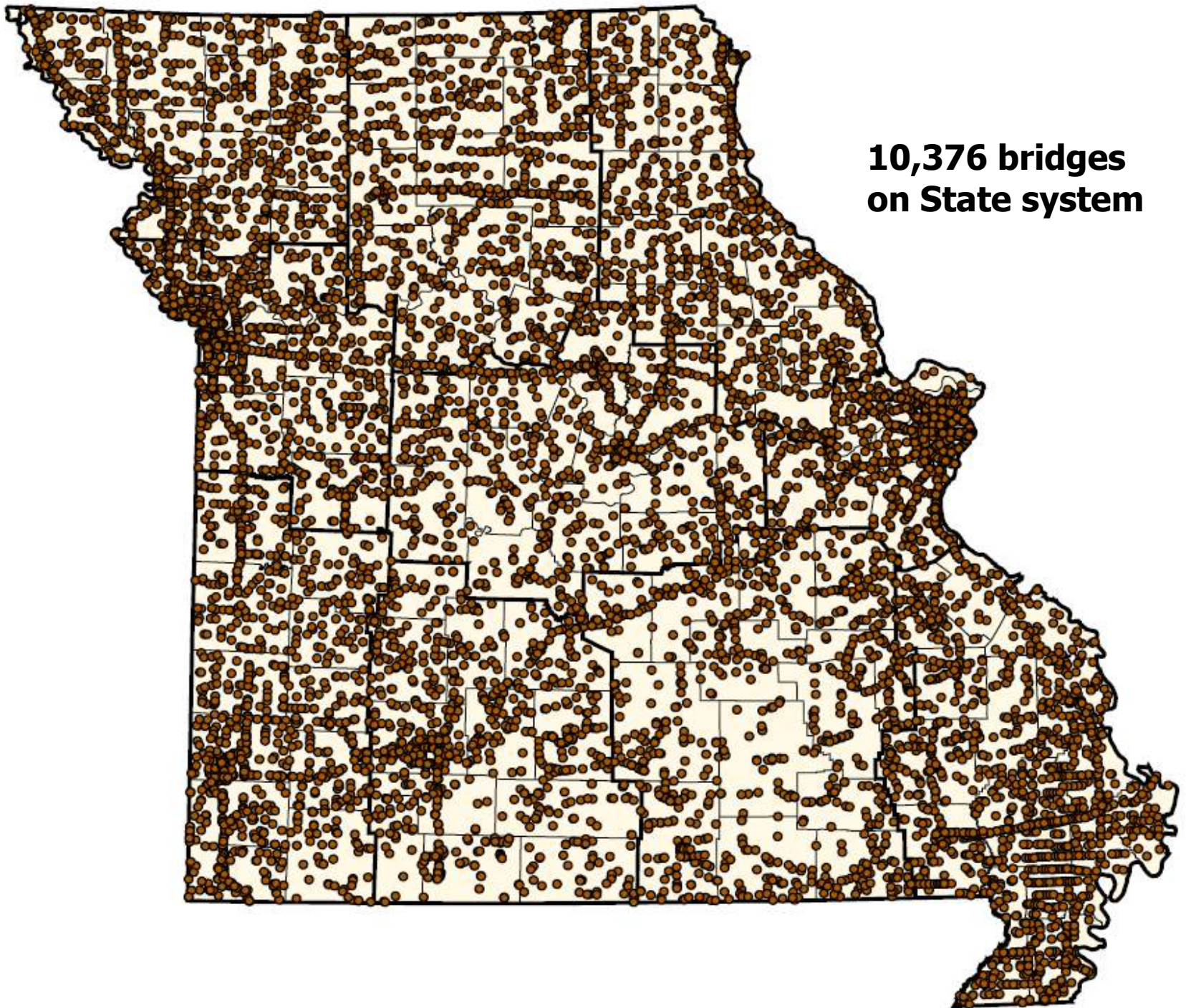
How Many Bridges Are There?

STATEWIDE

Local	13,982
<u>MoDOT</u>	<u>10,376</u>
Total	24,358

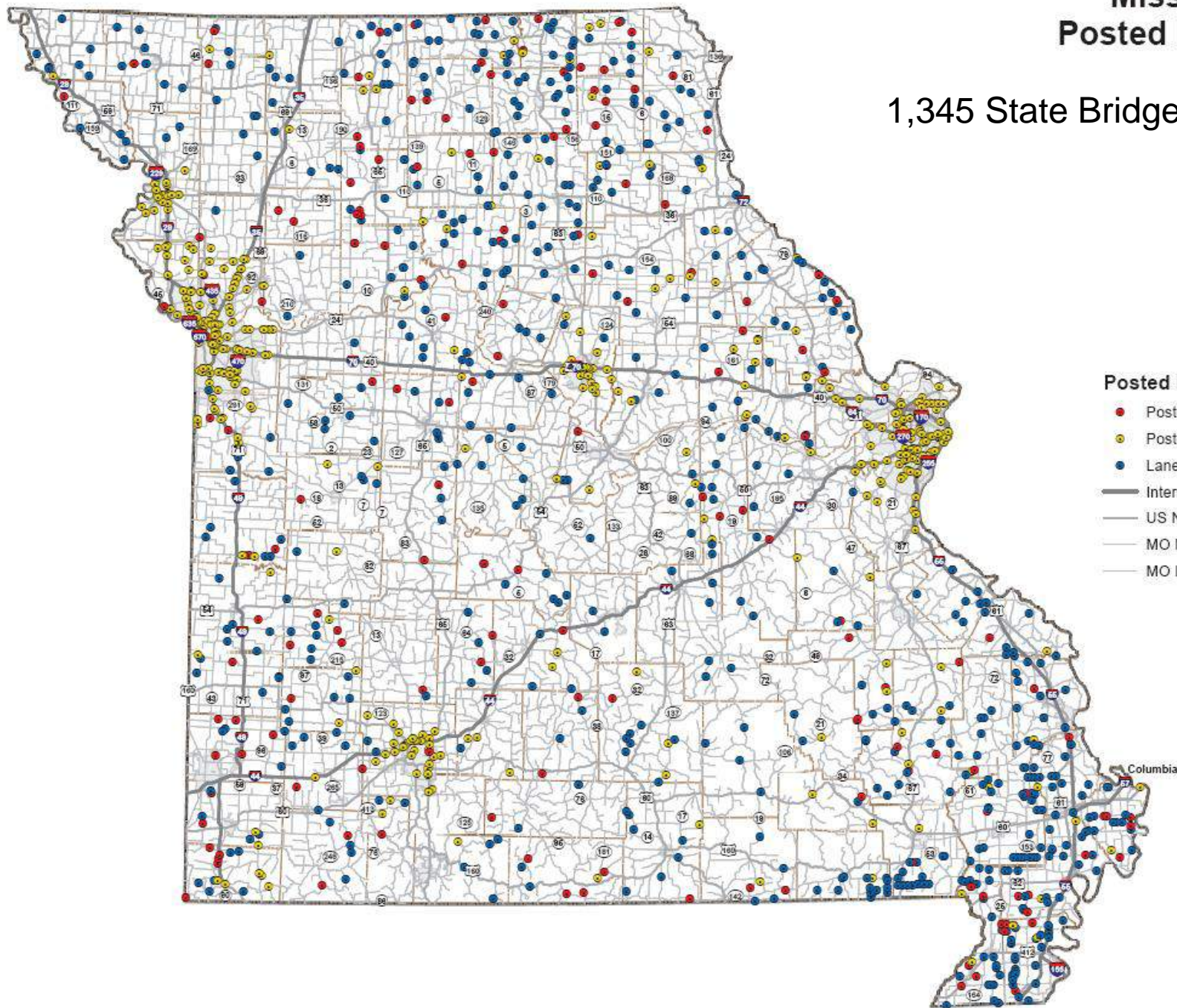


**10,376 bridges
on State system**



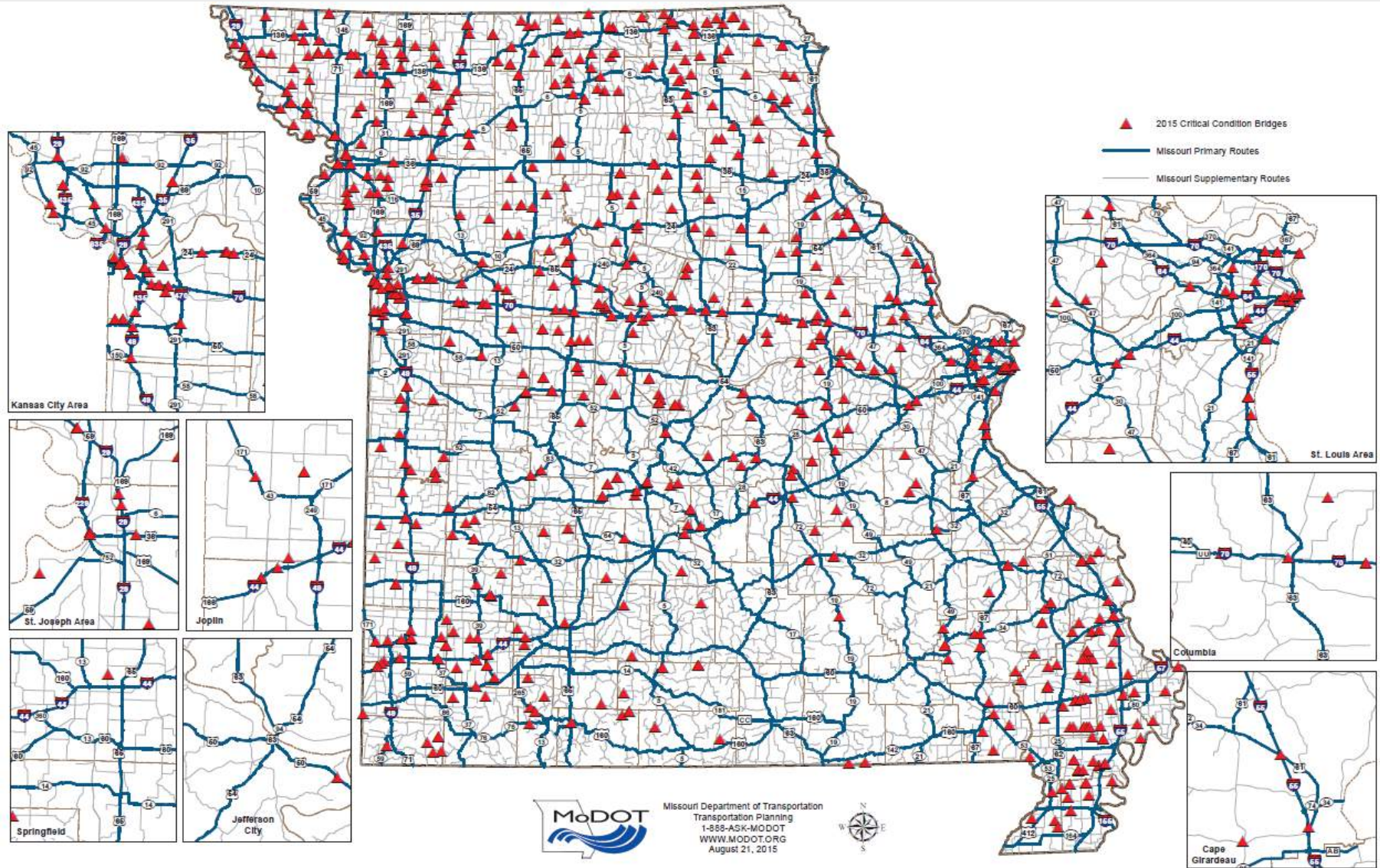
Missouri Posted Bridges

1,345 State Bridges

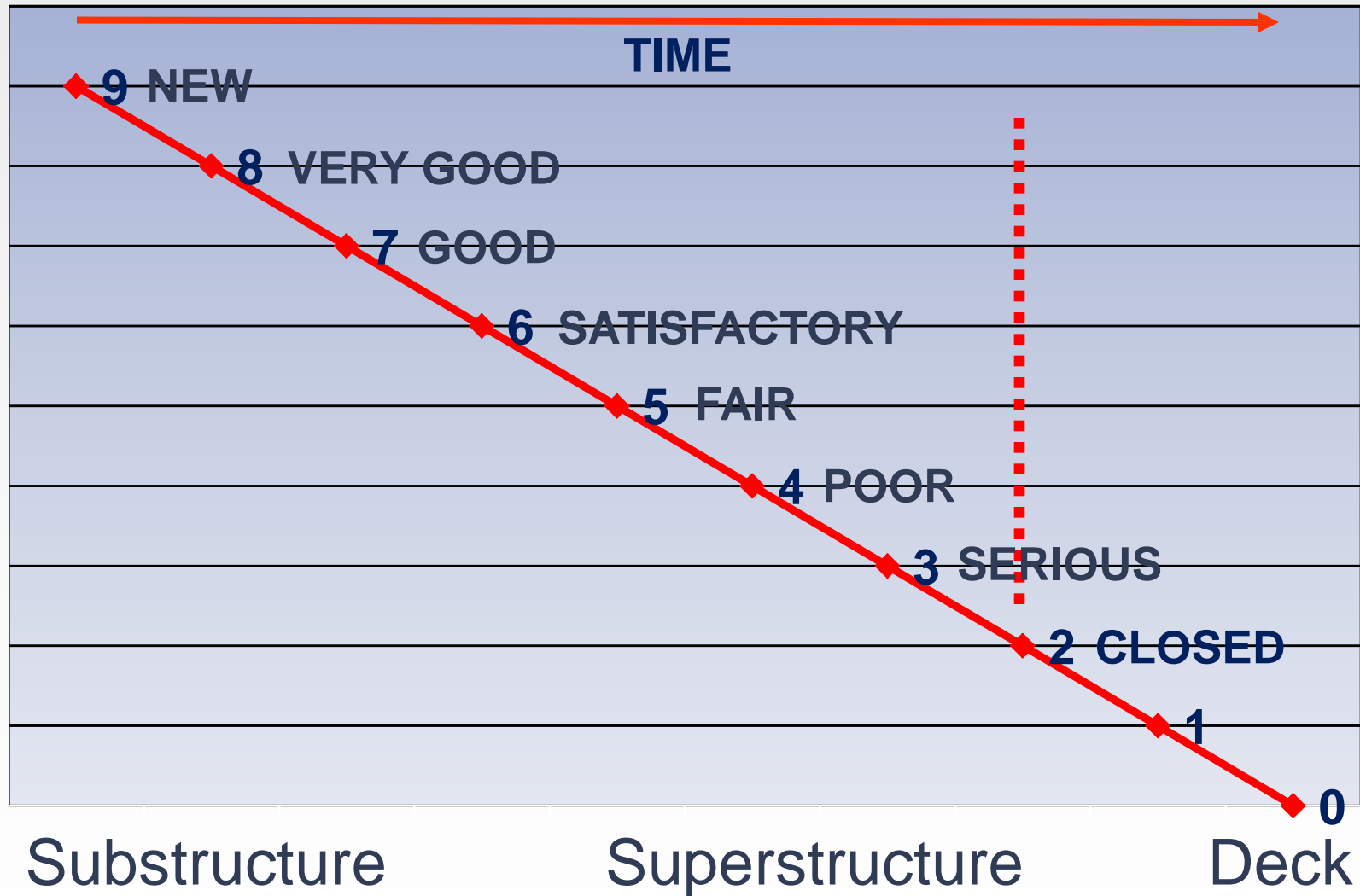


Critical Condition Bridges

STATEWIDE – 641



How are Bridges Rated?



Gasconade Co., Route J



77 years old

Timber piles

One lane, load posted

Detour length = 24 miles

Serves local school, fire and ambulance districts

If closed, would increase response times



Stoddard Co., Route 91



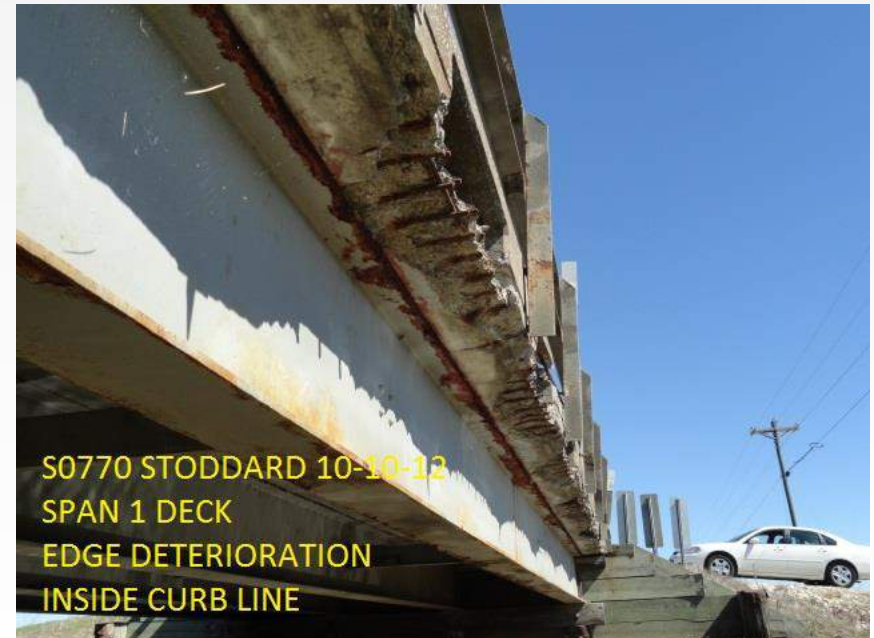
4 critical-condition bridges on this route

All were built in 1933 – 82 years old

Carry 700-800 vehicles per day

Ag access to SEMO Port and I-55

Important EMS route for residents to Cape Girardeau



Phelps Co., Route B



Over the Bourbeuse River

81 years old

One lane, load posted

Detour length = 30 miles

Serves Walmart Distribution Center and local wineries

X0008 11-07-13
SP 1 W/ HVY EDGE DETER
& PAINT PEELING ON EXT
GRDERS TYP THRUOUT





www.modot.org/Bridges



Route H, Scotland County
North Wyaconda River

CLOSED
Oct. 23, 2014





**I-44 Outer Road,
Laclede County
Gasconade River**

**CLOSED
Dec. 18, 2014**





Route T, Macon County
Thomas Hill Reservoir

CLOSED
Feb. 3, 2015



What is a major bridge?



Any bridge over 1,000 feet long.

Typically over major rivers and lakes.

Also flyover ramps in large interchanges.





Why talk about major bridges?

Just 2 percent of state bridges, but 25 percent of total deck area.

To replace just these 209 bridges would cost \$7 billion.



Compare typical bridges to major bridges

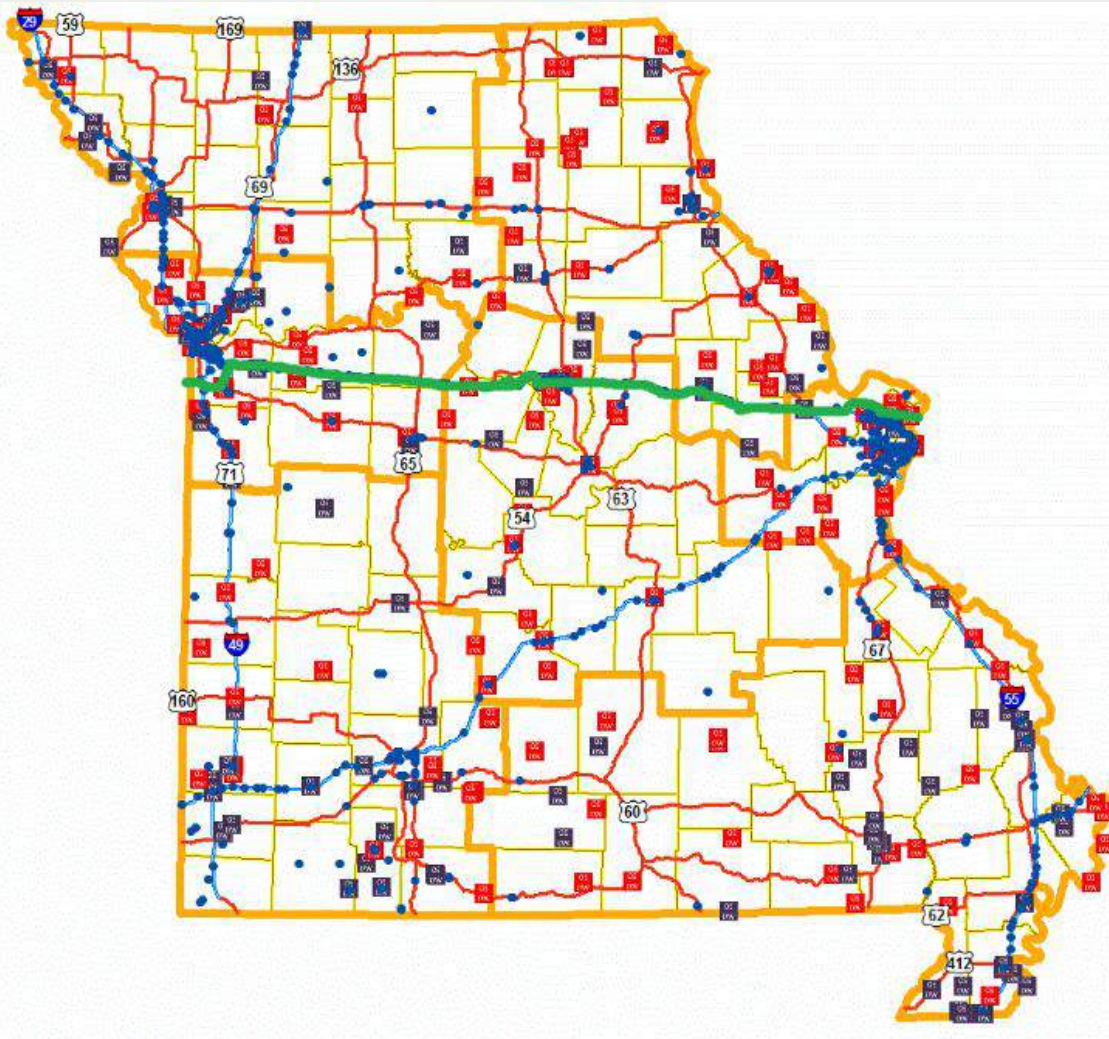
- **Cost to replace one bridge** \$1 million vs. \$100 million
- **Expected life** 50-75 years vs. 75-100 years
- **Typical detour length** 5 miles vs. 50 miles



Not Your Typical “18 Wheeler”

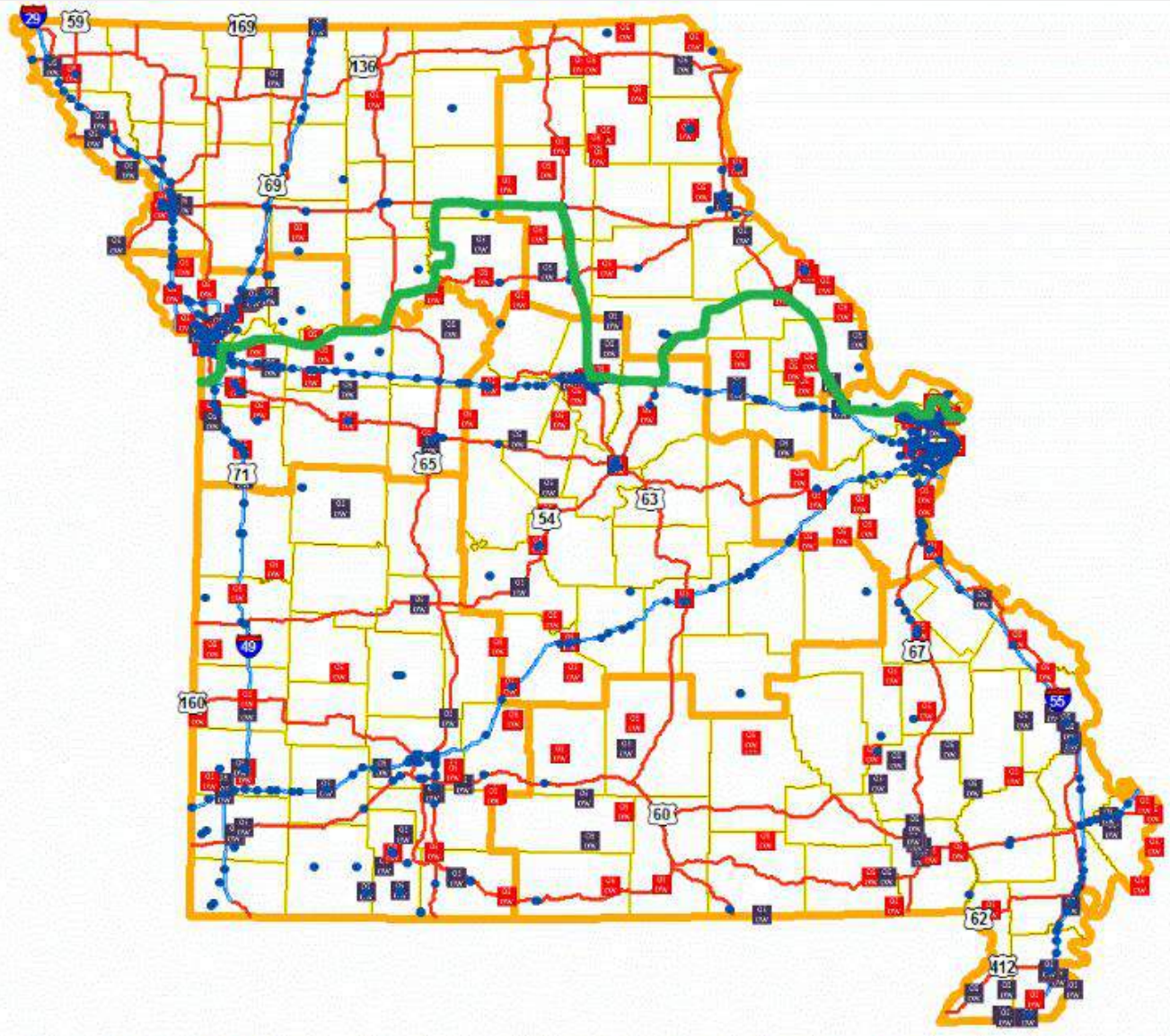


Preferred Route



271 Miles Total

Actual Route



413 Miles Total

**52%
Increase!**

Impact of Investing in Bridges

- load-posted bridges
- critical-condition bridges
- some bridges are on both lists

Currently

It's a cycle

Each year approximately **100 bridges** deteriorate and **100 bridges** are repaired. The net result is **NO PROGRESS** is made.

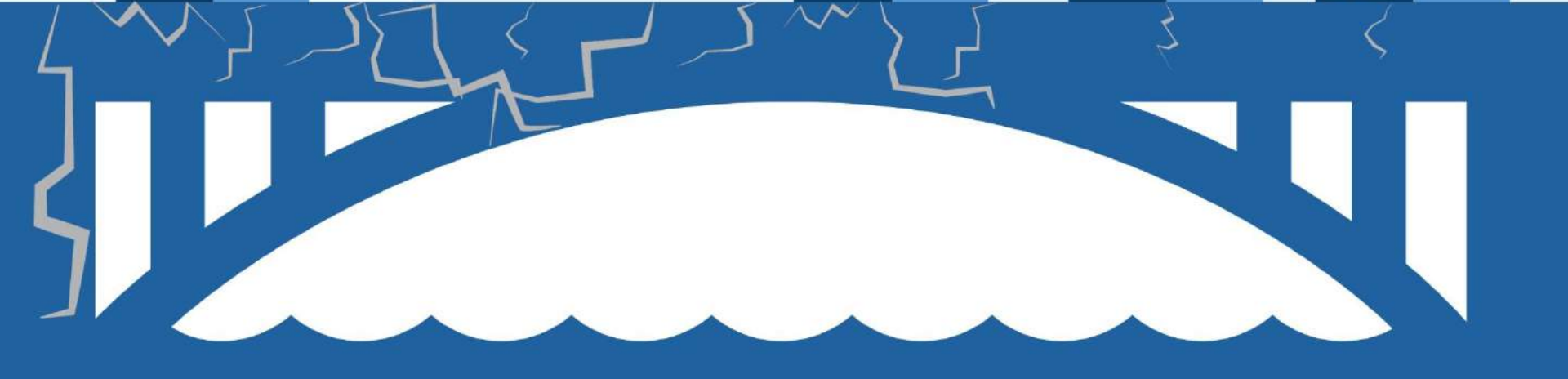


After 5 Years

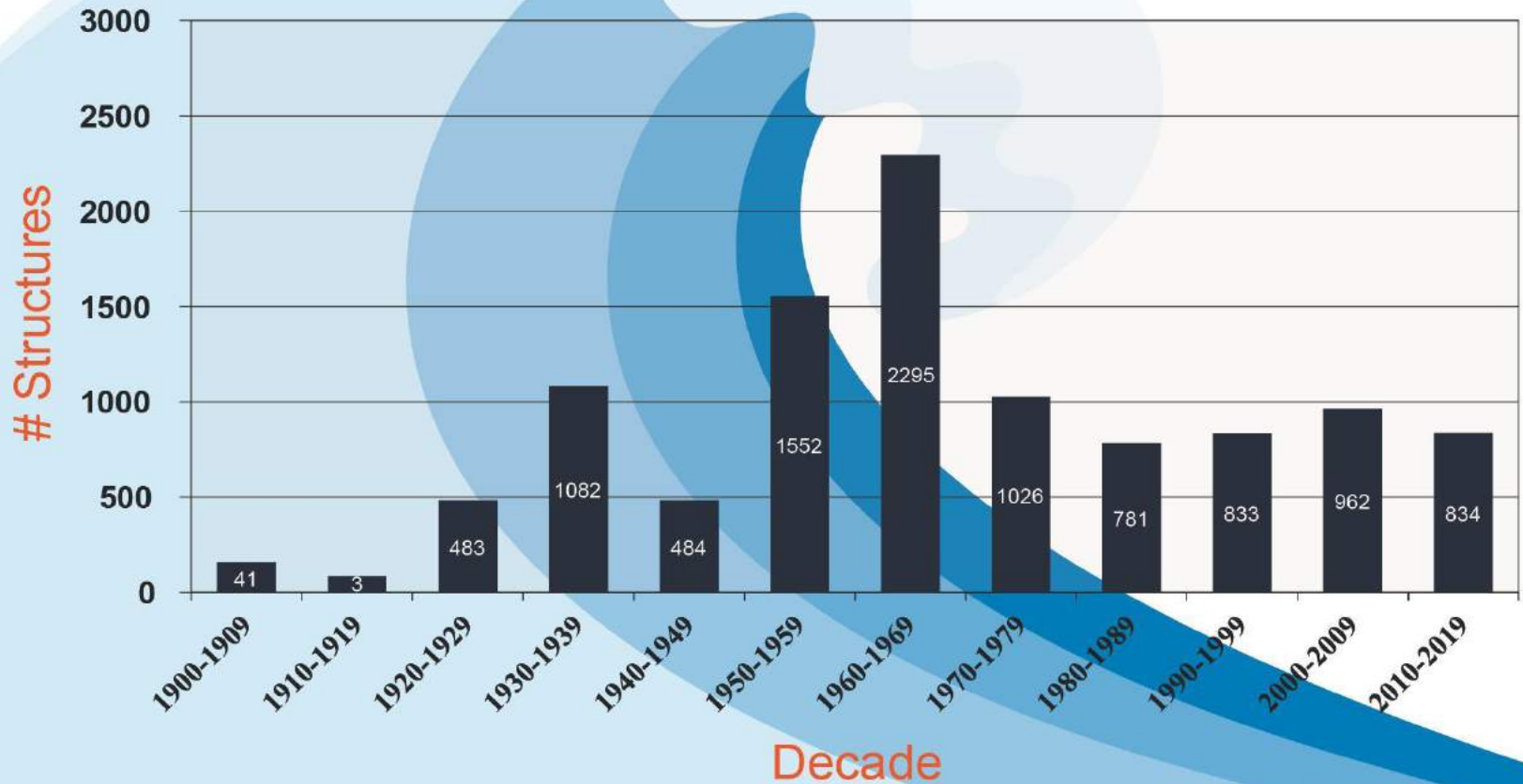
No progress

For an additional \$55 million per year

For an additional \$100 million per year



Distribution by Decade



About 60% of our bridges are older than their intended useful life of 50 years (those built prior to 1965).



Dennis Heckman
dennis.heckman@modot.mo.gov
(573) 751-4676

Thank You!