



Deteriorating Bridges And Their Impact On Freight Movement

**Scott Marion, Motor Carrier Services Director
Statewide Planning Partner Meeting
March 9, 2017**

“You Can’t Get There From Here”

A Transportation Story of Oversized Proportions



The issue:



Declining bridge and road conditions make it very hard to find safe and efficient routes for an increasing number of Oversize Overweight loads.

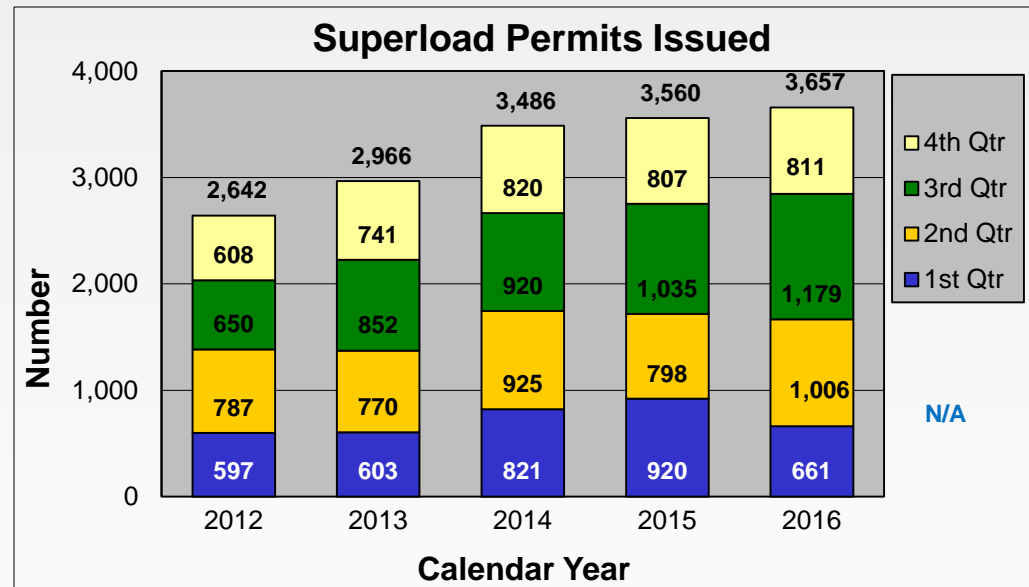


Almost 3,000 Big Loads/Week!



150,000+ OSOW Permits/Year

Loads Are Getting Super-Sized



61% increase since 2010 !

Not Your Typical “18 Wheeler”



Wind Loads are Increasing

- 2,200+ Loads From One Supplier in 2016

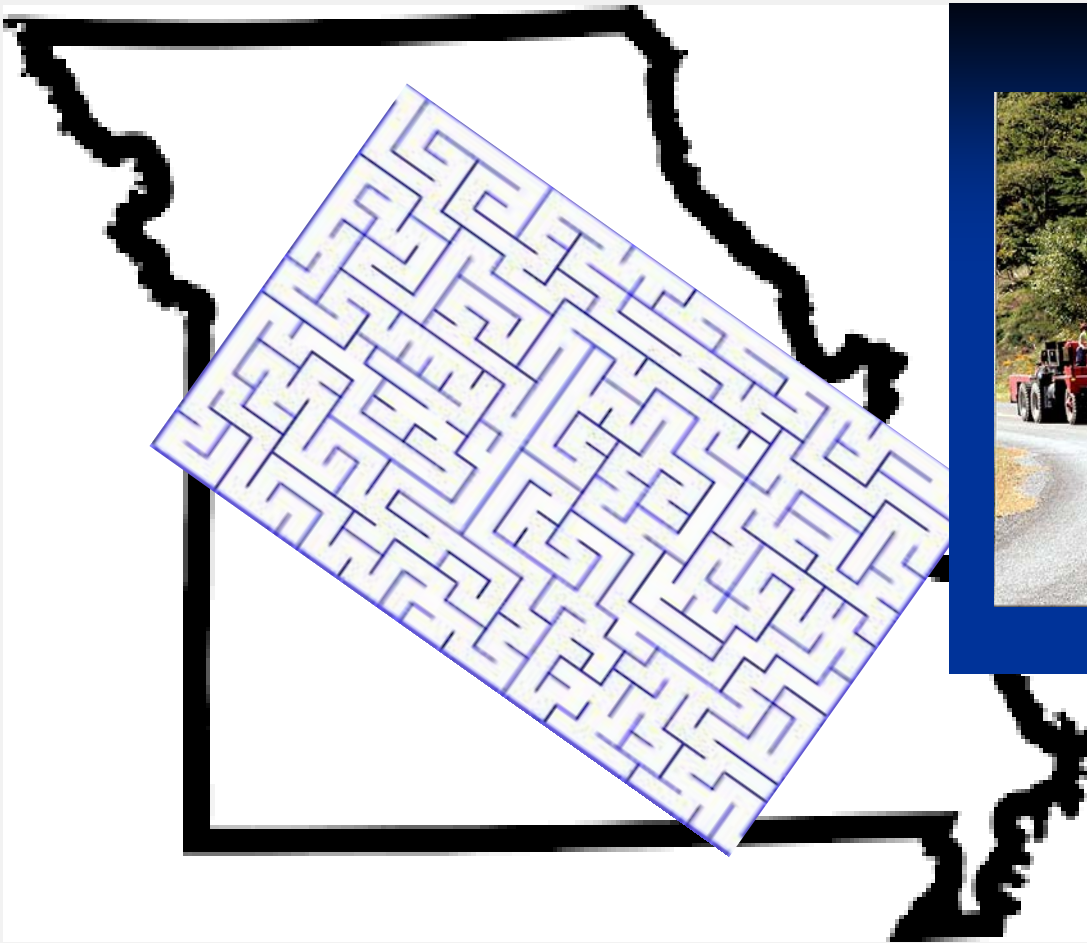




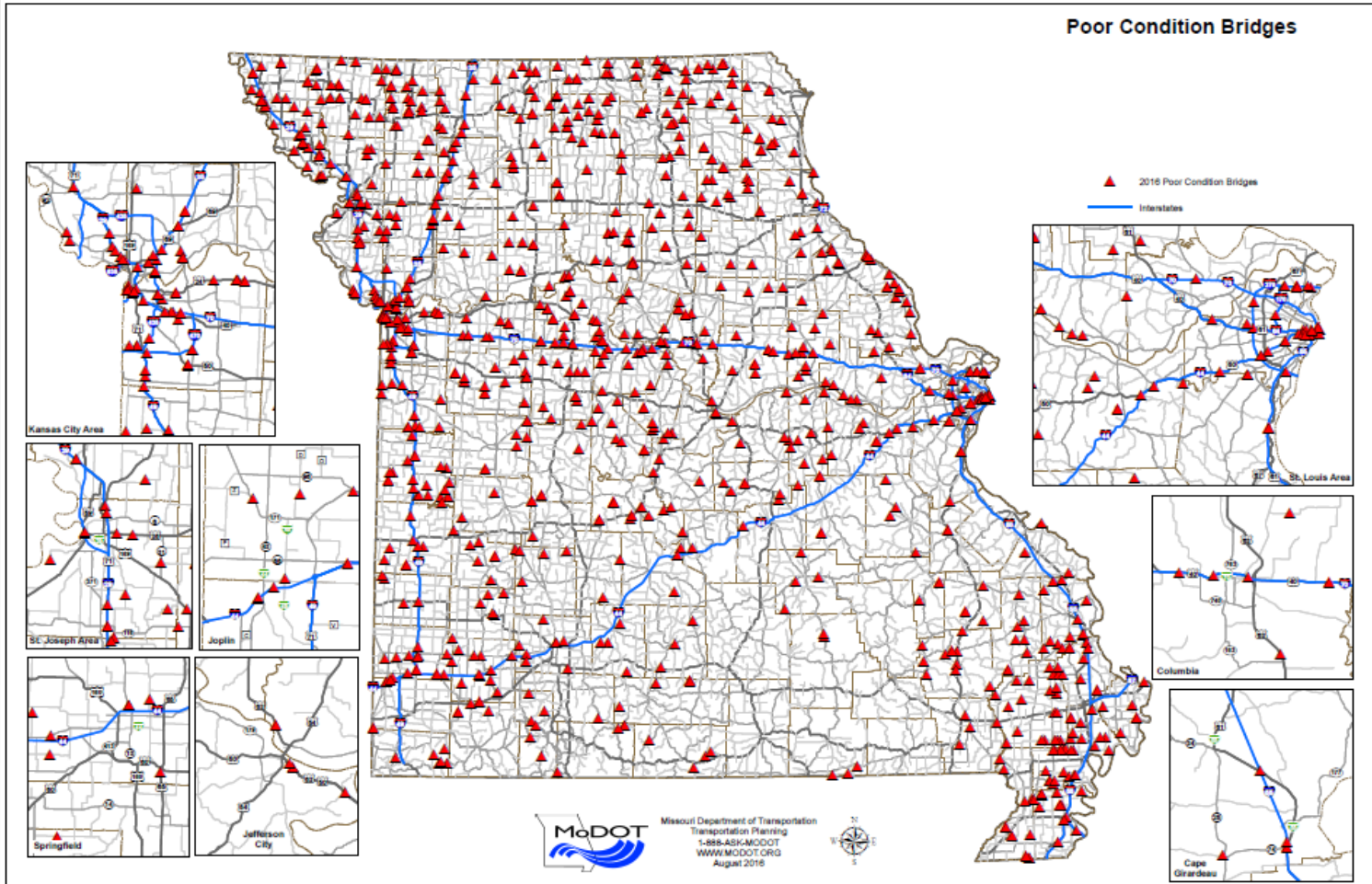
Oversize Overweight Keeps Bridge Division Busy

- 2,500 Superloads evaluated annually (95% increase from 2009)
- In 1995, only 35 Superloads for the entire year!

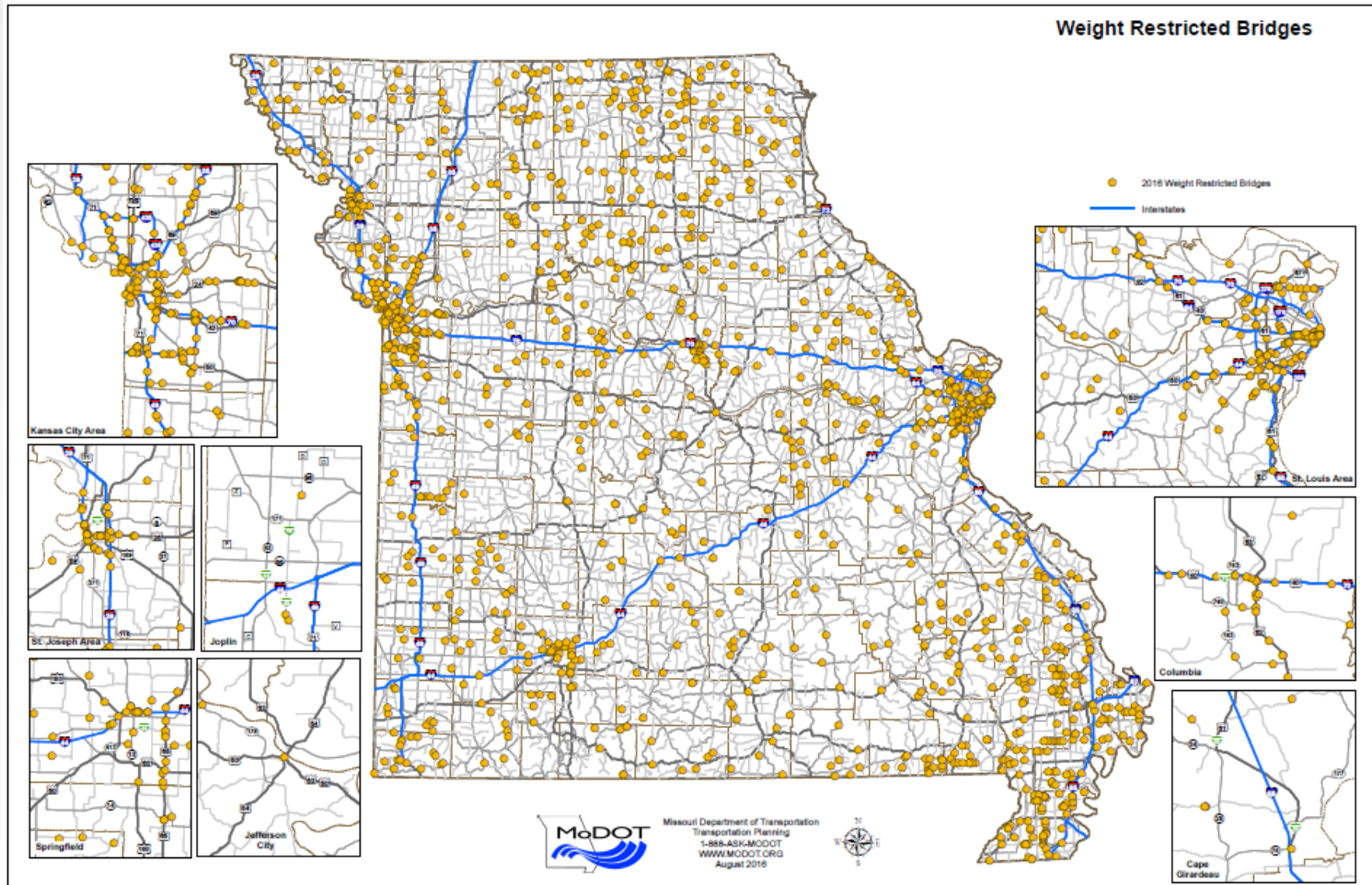
Safe Route “Maze”



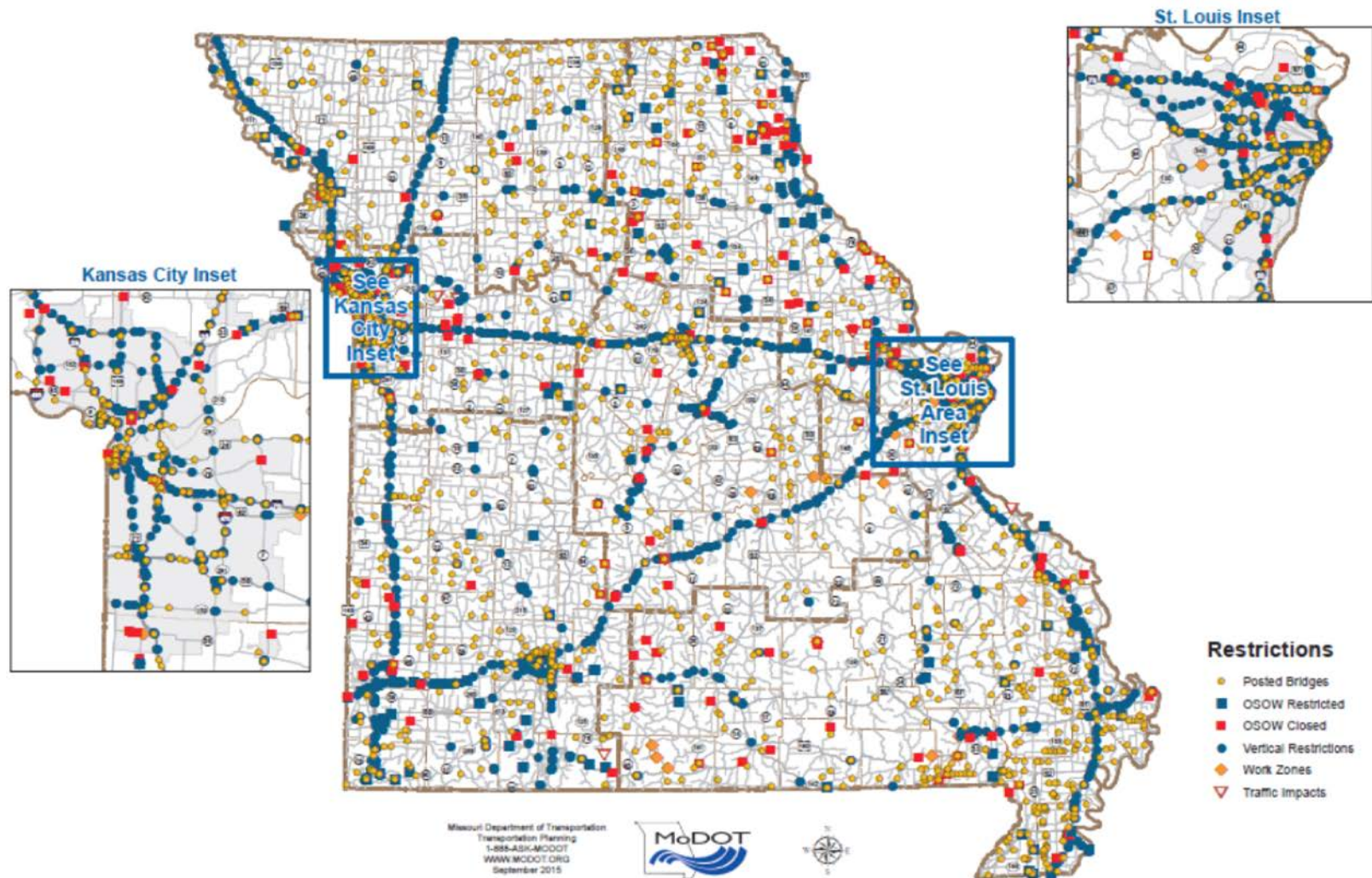
Poor Condition Bridges



Weight Restricted Bridges



The “Maze”



Real-Life Example

Vehicle Dimensions (Overall)

Length

150-0

ft-in

Height

16-0

ft-in

Width

16-0

ft-in

GVW

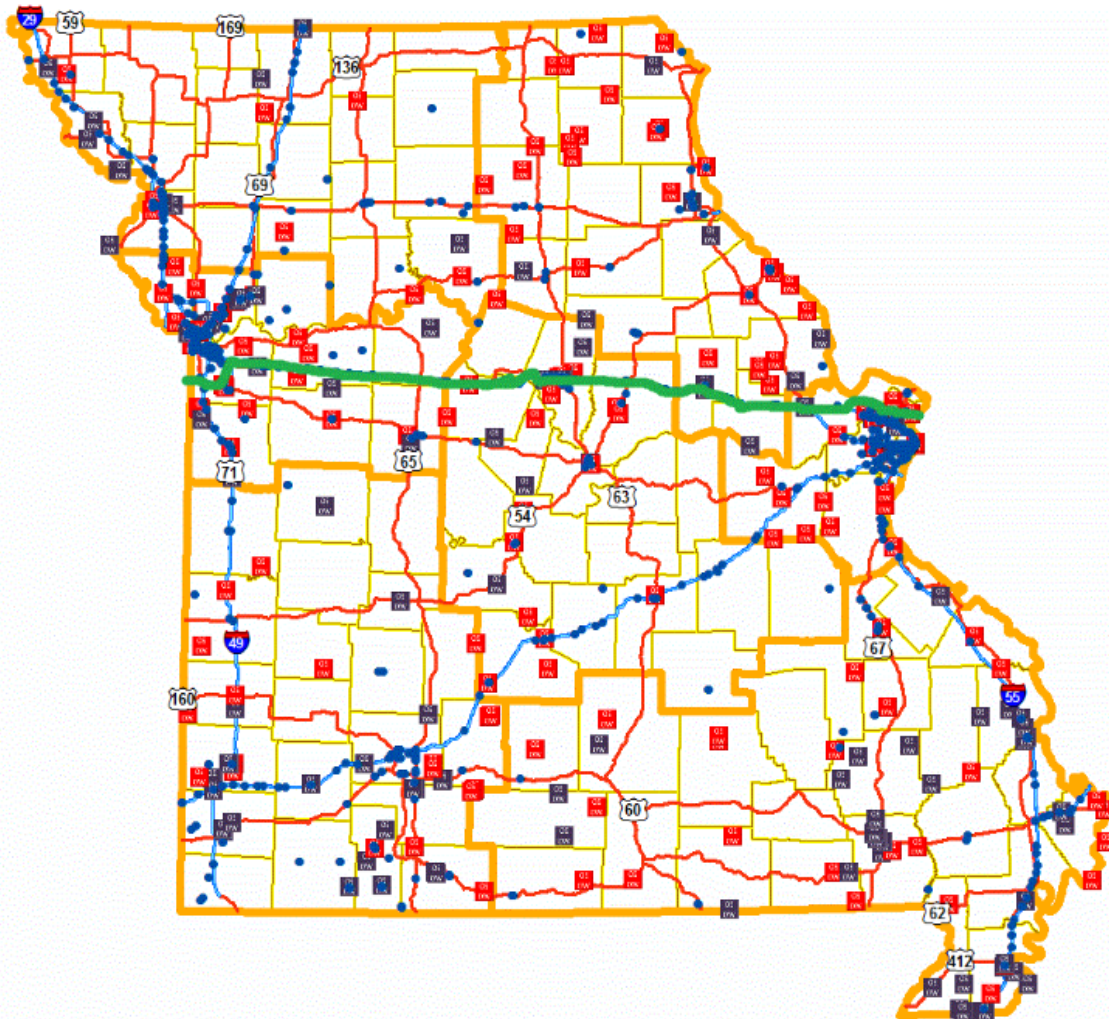
160000

lbs

Routine Oversize Overweight Permit
(Not a Superload)

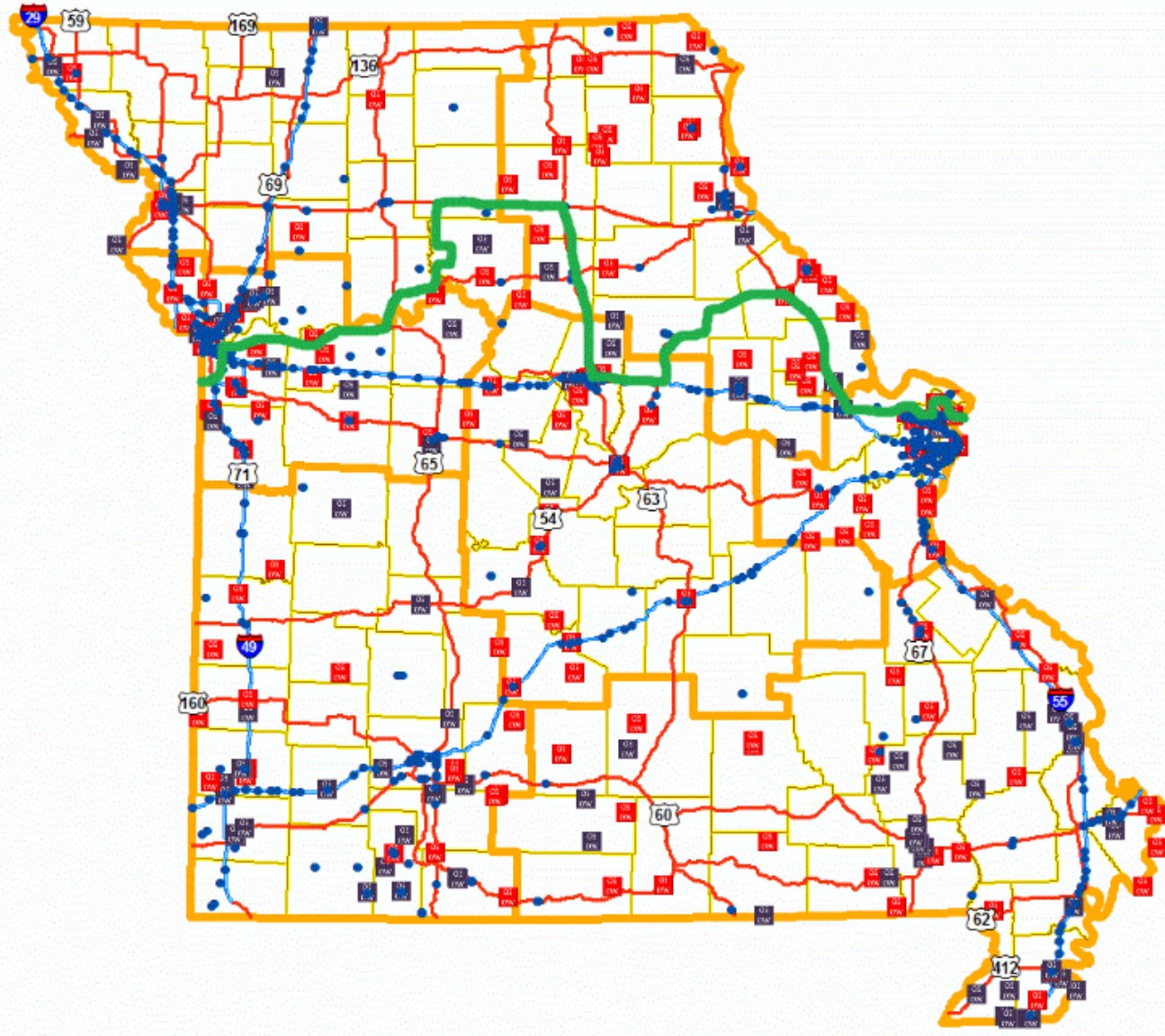
Entering from IL at I-270/Exiting into KS at I-435

Preferred Route



271 Miles Total

Actual Route



**413 Miles
Total**

52% Increase!

Missouri Closed for Business?

