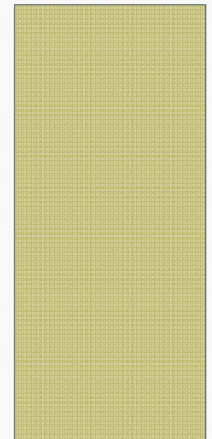


MULTIPLE FUNDING RESOURCES STRATEGY

LOCAL GOVERNMENT TRANSPORTATION PROJECTS



DEVILS ELBOW BRIDGE



DEVILS ELBOW BRIDGE



- The Devil's Elbow Bridge (circa 1923) is located on Historic Route 66 (Teardrop Road) and spans the Big Piney River.
- It is only one mile from Interstate 44, and close to Fort Leonard Wood, MO.
- This bridge draws approximately 144,900 visitors per year.
- About 100 people reside in Devil's Elbow and the community receives many tourists and visitors on a daily basis.

DEVILS ELBOW BRIDGE

The two-lane bridge is comprised of two 160-foot long rivet connected camel back through trusses, an 80-foot rivet connected pony truss and 172-foot long concrete approach spans. The bridge had significant deficiencies, including:

- Heavy scaling and desegregation of the deck edges with reinforcing steel showing
- Heavy rust with loss of section on outside girders
- Heavy rust on lower inside cord flange at southwest corner of bridge
- Damage to several later braces

Rehabilitation measures included:

- Repair south abutment under structure
- Repair top of piers (bearing and caps)
- Repair/replace joints
- Repair/replace guardrail
- Repair pier scour
- Clean/replace truss bearings
- Repaint structure

Total project \$1.6 million



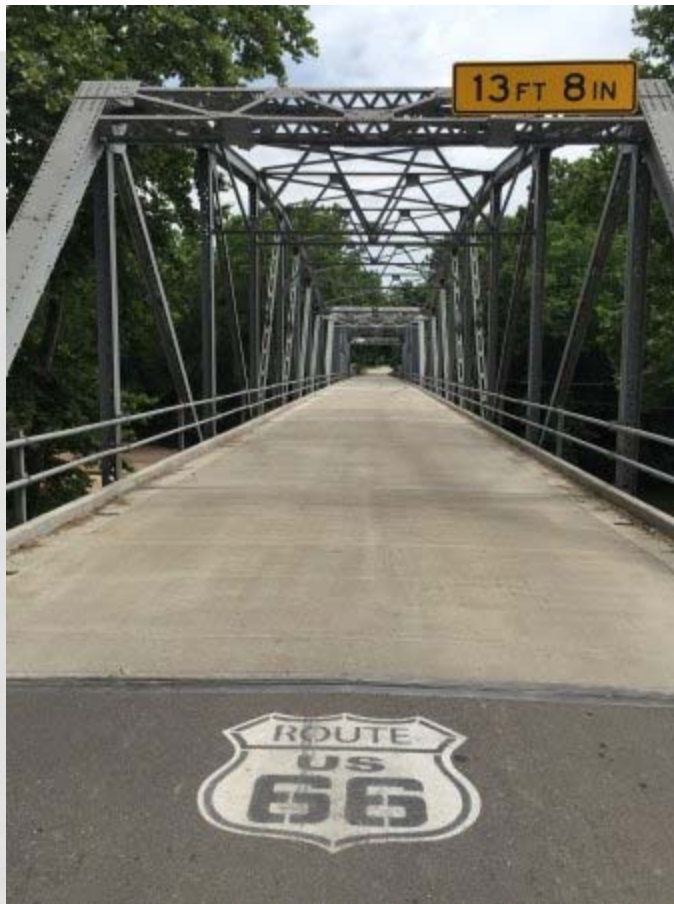
DEVILS ELBOW BRIDGE

- **Funding resources obtained**
 - \$250,000 Transportation Enhancement Program
 - \$24,461 USDA RBEG
 - \$936,036 BRO
 - \$8,000 NPS Rt 66 Preservation
 - \$250,000 CDBG Disaster Funds
- **\$1,468,497 Total Other Funding**

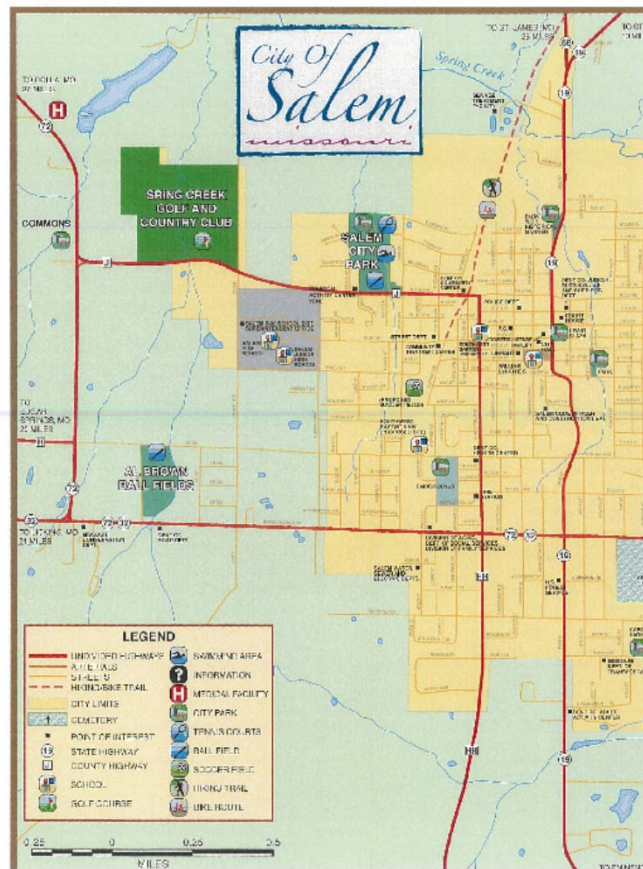


Pulaski County contributed the balance in in-kind labor, equipment and materials

DEVILS ELBOW BRIDGE



SALEM: MACARTHUR AVENUE

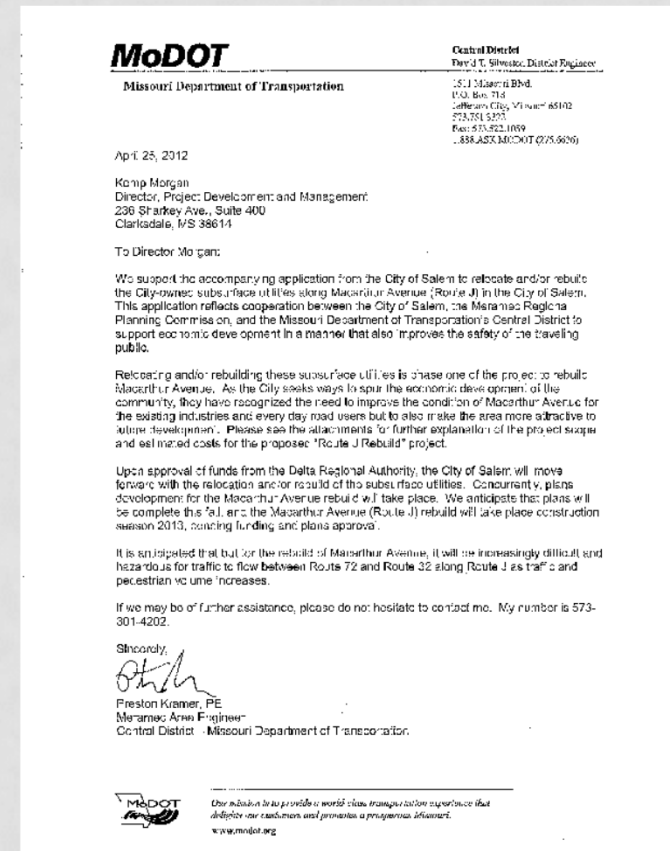


The city of Salem identified the need for improvements to water, stormwater, and sewer lines along with street construction along State Route J (MacArthur Ave.) serving a primary commercial area of the city.

SALEM: MACARTHUR AVENUE

The city of Salem coordinated with MoDOT Central District to develop a plan to upgrade subsurface utilities followed by the reconstruction of roadbed and asphalt.

- Total Project Cost: \$1,036,534



SALEM: MACARTHUR AVENUE

- **Funding resources used**
 - \$200,000 Delta Regional Authority grant
 - \$424,507 City of Salem (Portion is Cost-Share Match)
 - \$272,200 MoDOT Cost Share
 - \$119,827 MoDOT Engineering (Hwy J)
 - \$20,000 Salem Engineering (Water/Sewer)
- **\$1,036,534 Total Funding**



SALEM: MACARTHUR AVENUE

- Phase I: financed by the city and DRA, replacement of 4,950 LF of water lines (varying from 2-6 inches in diameter) with 6-inch PVC lines. City crews later replaced 2,585 LF of clay pipe sewer collection line with 8-inch PVC lines, along with installing eight new manholes.



SALEM: MACARTHUR AVENUE



Phase II: financed by MoDOT/Salem, the roadway surface was rebuilt full-depth in order to correct the cross-slopes to approximately 2% and parking areas to approximately 4%.

This served to improve conditions for on-street parking and provide a better tie-in for the crossing streets in the target area grid.



CONTACT INFORMATION



Bonnie Prigge, Executive Director
Planning and Project Development Department
Kelly Sink-Blair, Manager
573-265-2993
kellysb@meramecregion.org