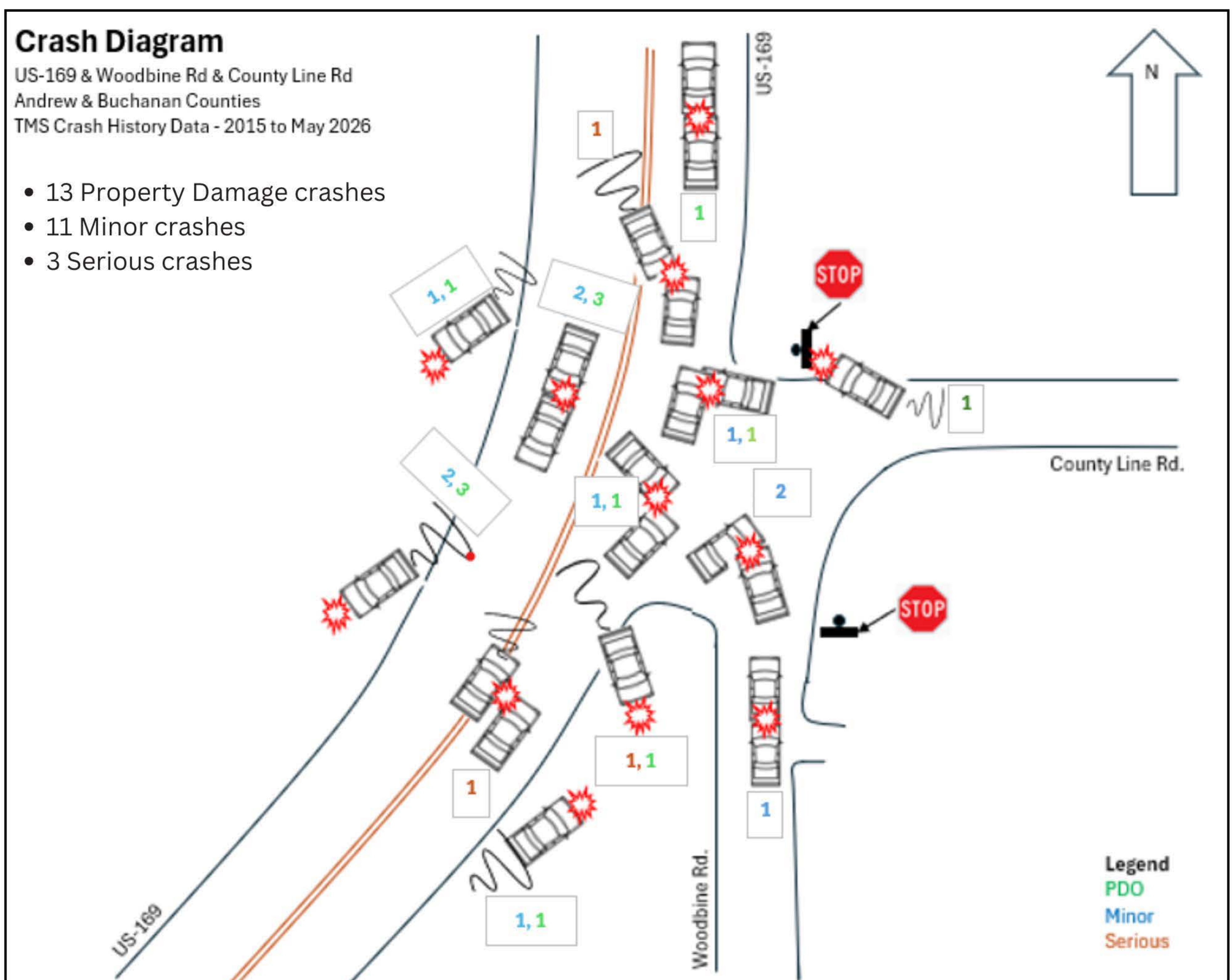


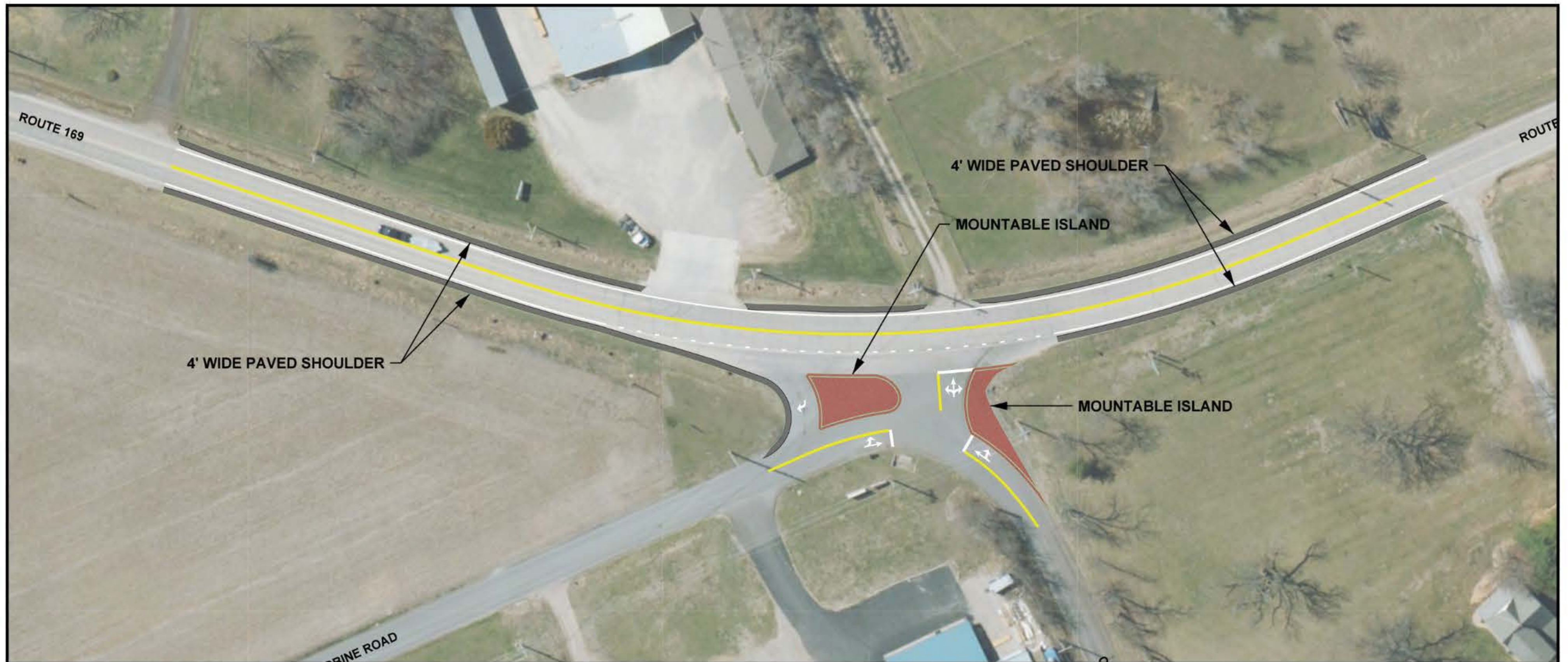
Project Goals:

- Significantly reduce the severity and frequency of crashes.
- Reduce driver confusion - as compared to the current atypical intersection.
- Accommodate increasing traffic volumes.
- Increase sight distance and stopping distance.
- Reduce driver speeds.

Crash Data:



Island Concept



Pros

- Cost-effective.
- Clear markings for navigation.
- Limited right of way.

Cons

- Wouldn't significantly reduce crashes.
- Doesn't improve sight distance or turning movements.
- Limited space for large vehicles.

Short-Connector Concept



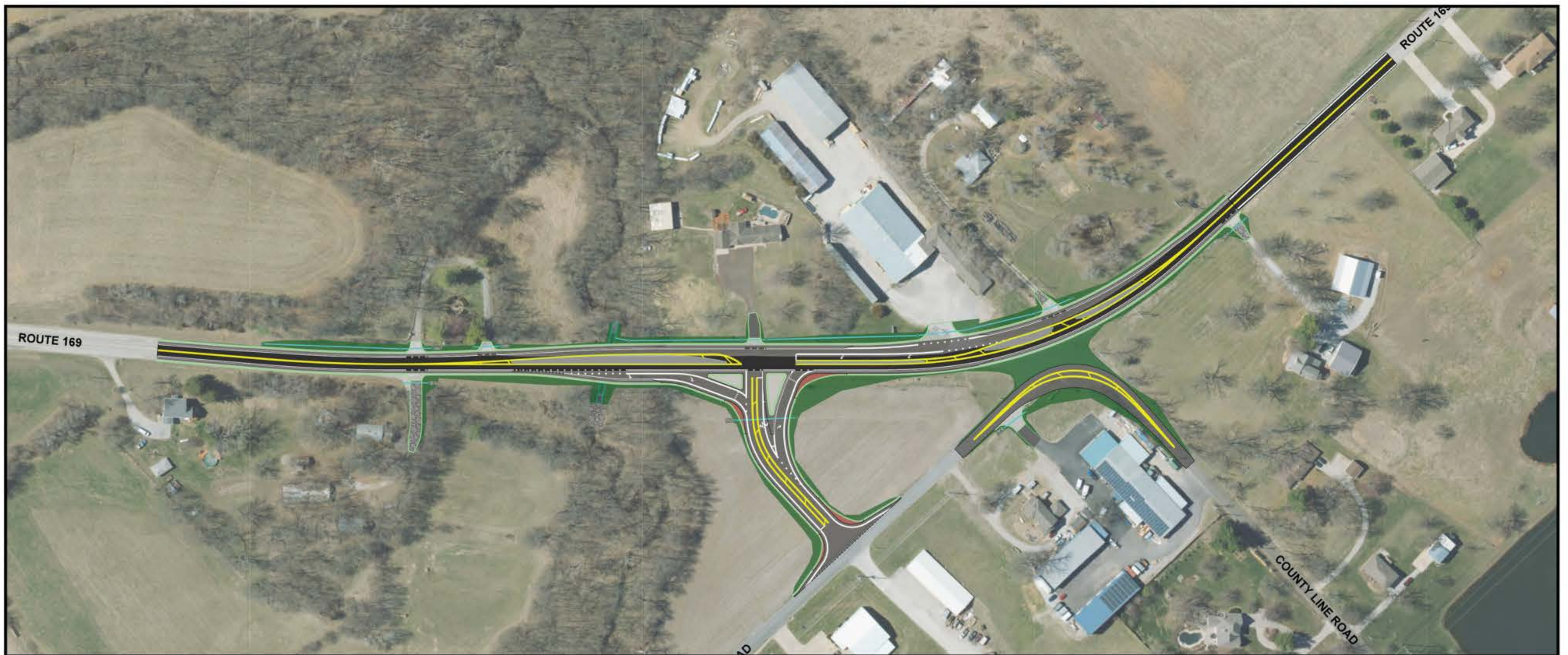
Pros

- Easier for travelers to navigate.
- Turn lanes.

Cons

- Large right-of-way impacts.
- Expected crash reduction only 30%.
- Steep connector road grade (15%).
- Traffic signal would be needed.

Mid-Connection Concept



Pros

- Easier for travelers to navigate.
- Turn lanes.

Cons

- Large right-of-way impacts.
- Expected crash reduction only 30%.
- Traffic signal would be needed.

Long-Connector Concept



Pros

- Improved sight distance.
- Easier for travelers to navigate.

Cons

- Largest right-of-way impacts.
- Expected crash reduction only 30%.
- Highest construction cost.
- Traffic signal would be needed.

Roundabout



Pros

- Expected crash reduction up to 79%.
- Accommodate increasing traffic volumes.
- Allows continuous movement without a downgrade full stop.
- Reduces driver speeds.

Cons

- Large right-of-way impacts.
- Change.