

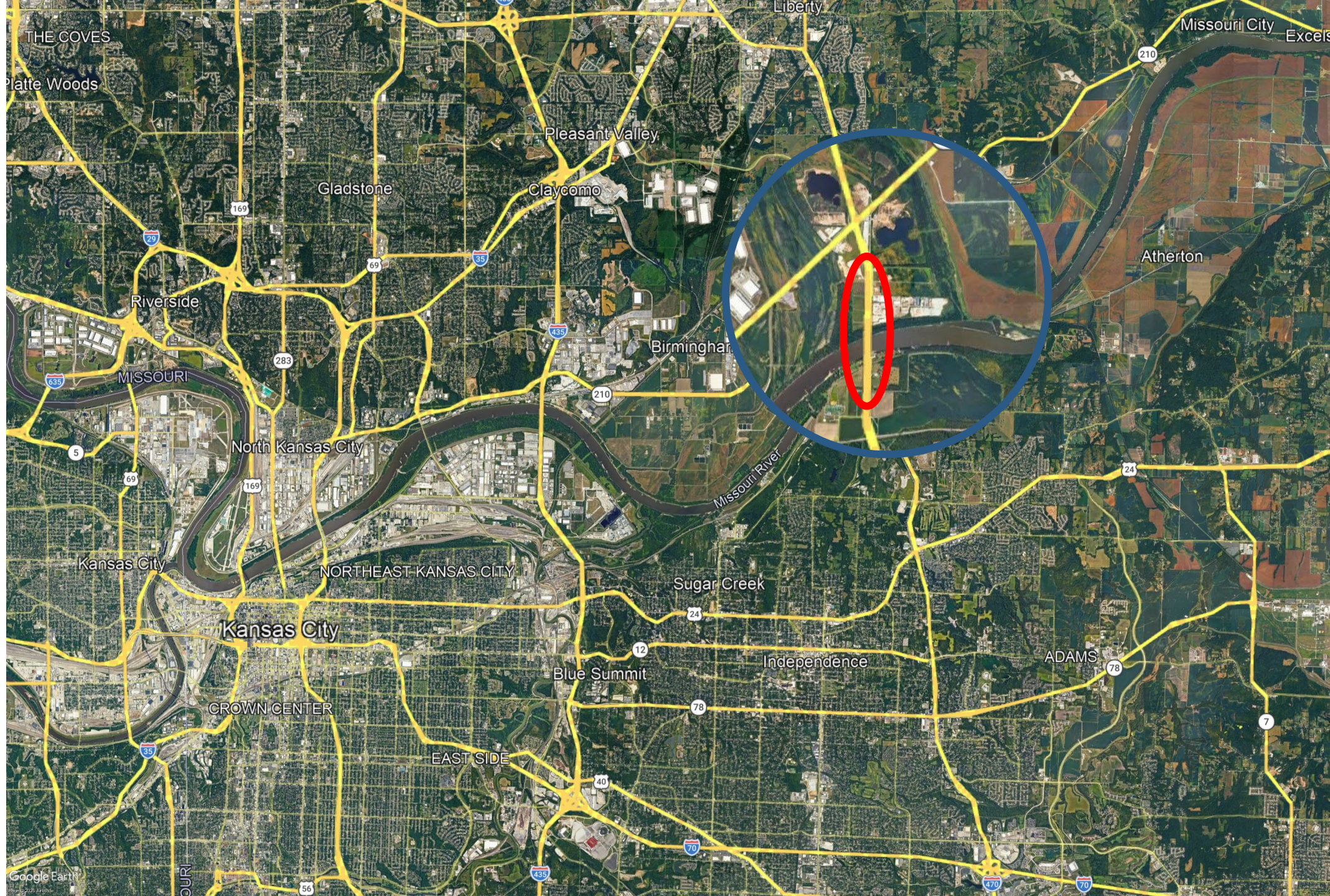
INDUSTRY MEETING

Kansas City District

James Pflum, PE
Project Director

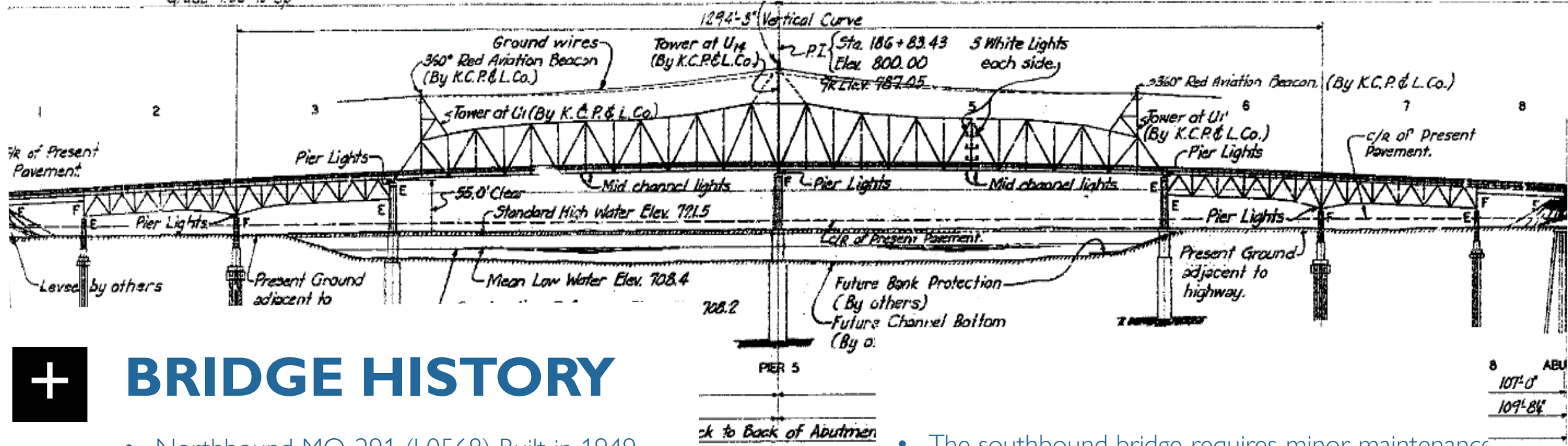


291 RIVER BRIDGE



291 RIVER BRIDGE





+

BRIDGE HISTORY

- Northbound MO-291 (L0568) Built in 1949
- Southbound MO-291 (A4757) Built in 2002
- NB Bridge is in "Poor" condition – 6,4,6 Ratings
- Roadway width is 24 wide
 - Two – 11 foot lanes and substandard shoulders
- MoDOT performed a study in 2020 to assess if the northbound bridge truss could be replaced
 - Significant portions of the existing foundations would need to be replaced.
 - No accommodation for pedestrians.
 - The study recommended full replacement of the northbound bridge.
- The southbound bridge requires minor maintenance and the painting of the truss.
- Two bridges together carry approximately 32,000 vehicles per day
- There is an interest in the region to offer bicycle/pedestrian options over this bridge.
- Existing cross-overs in place used for roadway staging in previous maintenance projects.

CURRENT CONDITION

291 RIVER BRIDGE



N 9/30/25
of lower
north plate

PROJECT SCHEDULE

Activity		Tentative Date
Project Delivery Determination		December 2024
NEPA Cleared		January 2025
Phase 1	Project Advertisement	April 1, 2026
	Industry Meeting/RFQ Release	May 5, 2026
	SOQs Due	June 5, 2026
	Shortlist	June 18, 2026
Phase 2	RFP Release	July 6, 2026
	One-on-One Technical Meetings	July through September 2026
	Proposals Due	October 30, 2026
	Award at MHTC Meeting	December 2, 2026

BUDGET

- CURRENT STIP AMOUNTS



Design-Build Contact

- \$92.2 million

Stipends

- \$500,000 per responsive proposal

Programmed Budget

- \$111.3 million

PROJECT OVERVIEW-ALIGNMENT OPTIONS

- Build bridge on current alignment



- Build bridge on east (downstream) alignment



- Build bridge on west (upstream) alignment



NEPA COMMITMENTS

COMMITMENTS

- MoDOT will follow the Uniform Act, as applicable, to the acquisition of ROW and easements.
- MoDOT will require the contractor to minimize the use of the park access road, boat ramp, and vehicle/boat trailer parking area, to allow for continued use of park facilities by the public.
- The contractors' use of the park access road, boat ramp, and vehicle/boat trailer parking areas by heavy construction vehicles is prohibited.
- Any damage caused by construction vehicles or equipment using the park access road, boat ramp, and/or vehicle/boat trailer parking area will be repaired by the contractor when project construction is complete.
- The contractor will make drainage improvements along the park access road to alleviate flooding that causes park closures. The contractor's design will be reviewed and accepted by the City of Sugar Creek prior to completing the work

291 RIVER BRIDGE





PROJECT GOALS

1. Deliver the project within the program budget to complete the project no later than December 1, 2029.
2. Deliver safe and durable infrastructure that includes a Missouri River bridge that provides a century of service and considers future maintenance of the corridor.
3. Minimize construction impacts and maximize work zone safety to customers and workers.
4. Create opportunities to invest in and enhance the community.



EARLY RELEASE INFO

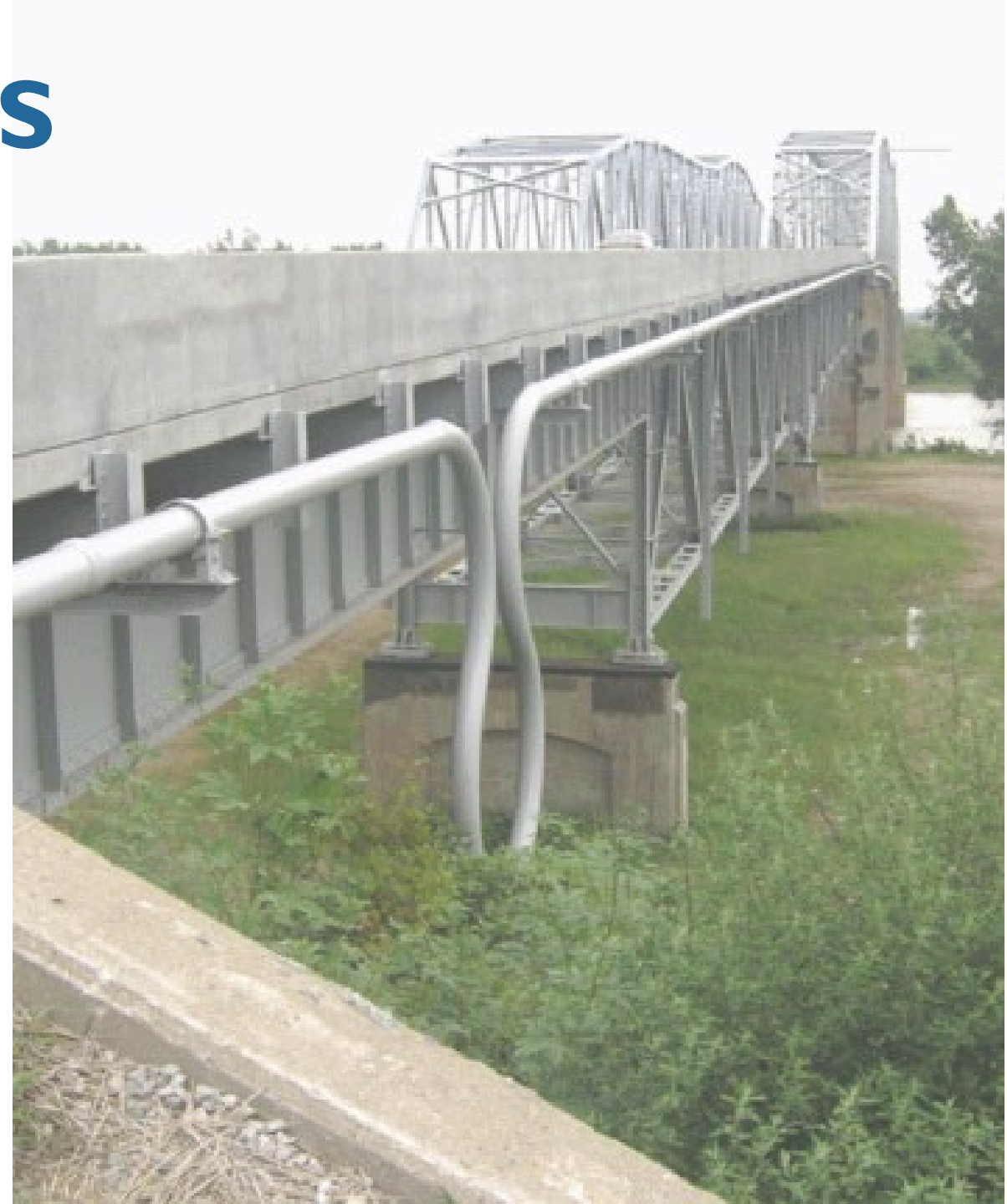
- As-Built Plan Sheets
- Bridge Reports
- Environmental
- Geotechnical
- Hydraulic Analysis
- Bridge Condition Analysis
- Survey Data

Disclaimer: All information subject to change!

MODOT NEXT STEPS

UTILITIES

- Buckeye Pipeline
 - Petroleum products across the river in an 8” pipe on the west side of the bridge
- UPN
 - Carries fiber optic lines in an 8” pipe on the east side of the bridge.
- Evergy
 - Maintains an overhead distribution line on brackets attached to the east side of the truss.
- Spire
 - Gas line underground on east side of NB bridge
- Independence Water
 - Independence Water maintains an existing 30” line on the southbound bridge



MODOT NEXT STEPS

PERMITTING AGENCIES

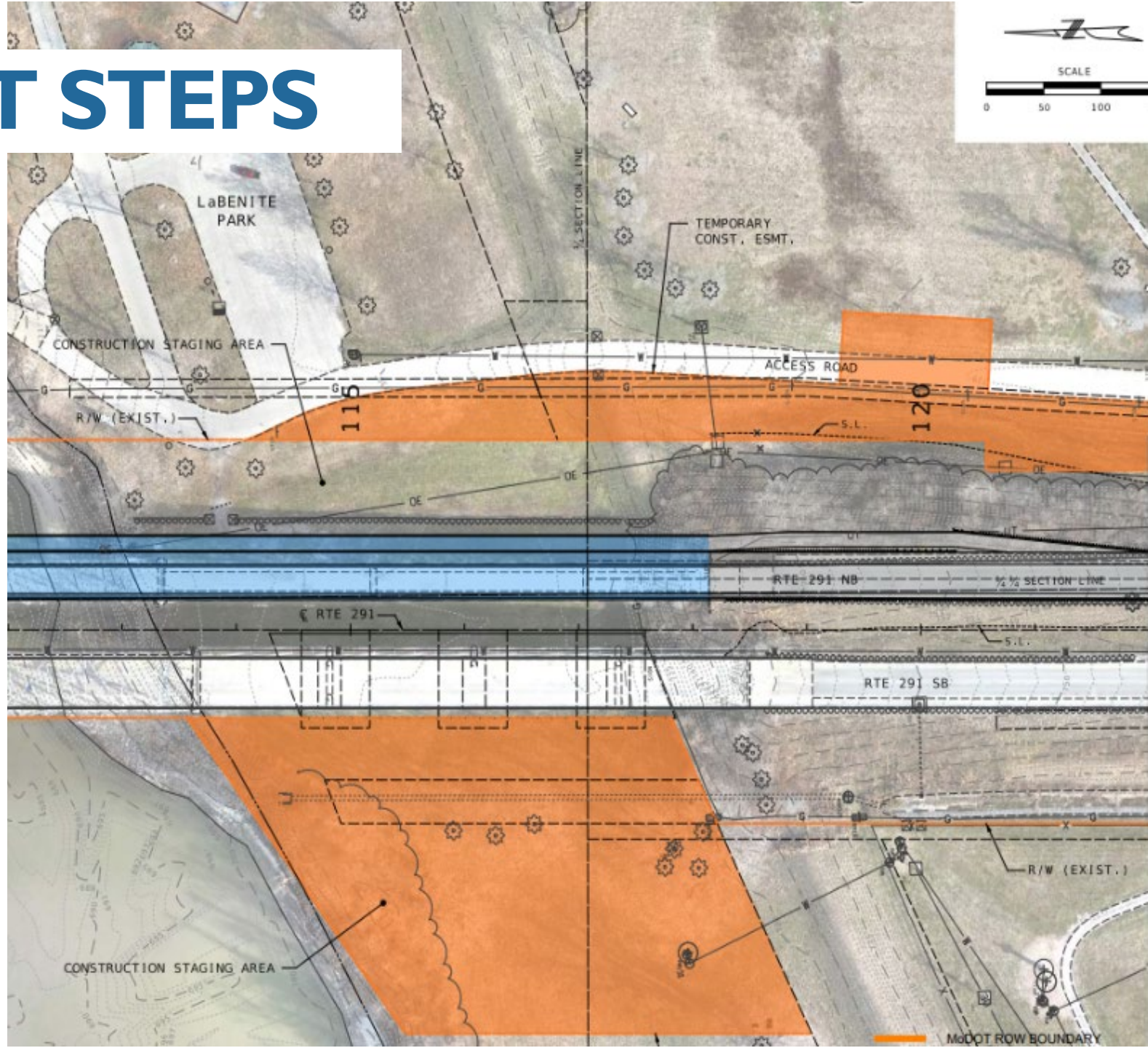
- Have begun discussions with various permitting agencies
 - Corps of Engineers
 - Working to submit a preliminary permit for review and comments for 404 and 408
 - Coast Guard
 - MoDOT will submit a Bridge permit application
 - Clearances have been tentatively approved
 - Mitigation
 - Currently mitigating trees and wetlands
 - National Parks Service
 - Finalized ROW related to 6(f) property



MODOT NEXT STEPS

ROW

- Working with the City of Sugar Creek on acquiring easements
- Discussions have started and will continue
- Will provide ROW schedule in RFP



REQUEST FOR QUALIFICATIONS

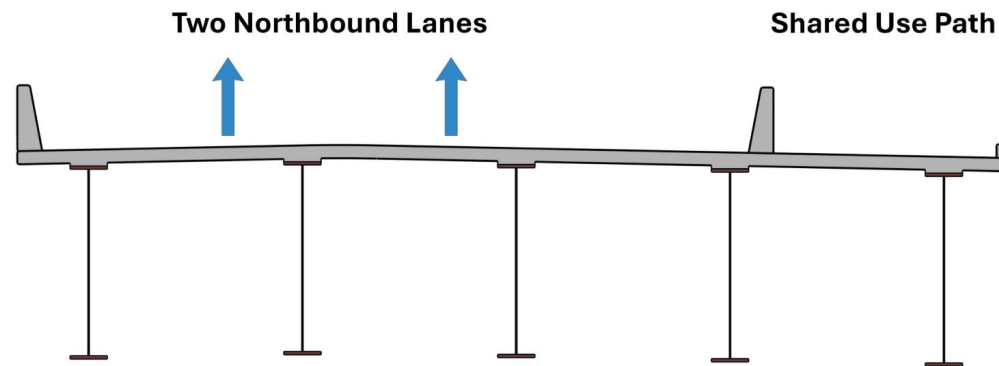
CONTENT

- Submitter Experience (60 Points)
 - Four-page Executive Summary
 - 6 Reference Projects
- Key Personnel (40 Points)
 - Project Manager
 - Quality Manager
 - Design Manager
 - Construction Manager
- Additional Details
 - DBE Plan
 - 0% Construction Goal
 - 0% Professional Services Goal
 - 4 On-The-Job Trainees



DRAFT CONFIGURATION REQUIREMENTS

- The Contractor shall remove Bridge No. L0568 and construct a new MO 291 Missouri River crossing that accommodates two (2) lanes of traffic.
- A separated multi-use path facility shall be provided on the new bridge that connects to Cobbler Road and LaBenite Park.
- The Contractor shall long-term rehabilitate the existing MO 291 Bridge No. A4757 Missouri River crossing.
- All Work is to be constructed within the existing or proposed Right of Way (ROW) as shown in the approved ROW Plans as provided in Book 4 or additional ROW Plans and as defined in Section 8 Right of Way.



CONCEPTUAL ONLY

INELIGIBLE FIRMS

- The following firms are serving as MoDOT's Owner-Engineer and are ineligible to compete:
 - Burns and McDonnell
 - TREKK
 - UES





THANK YOU QUESTIONS?

