

# 2026 Innovations Showcase



# Innovations Showcase Homepage

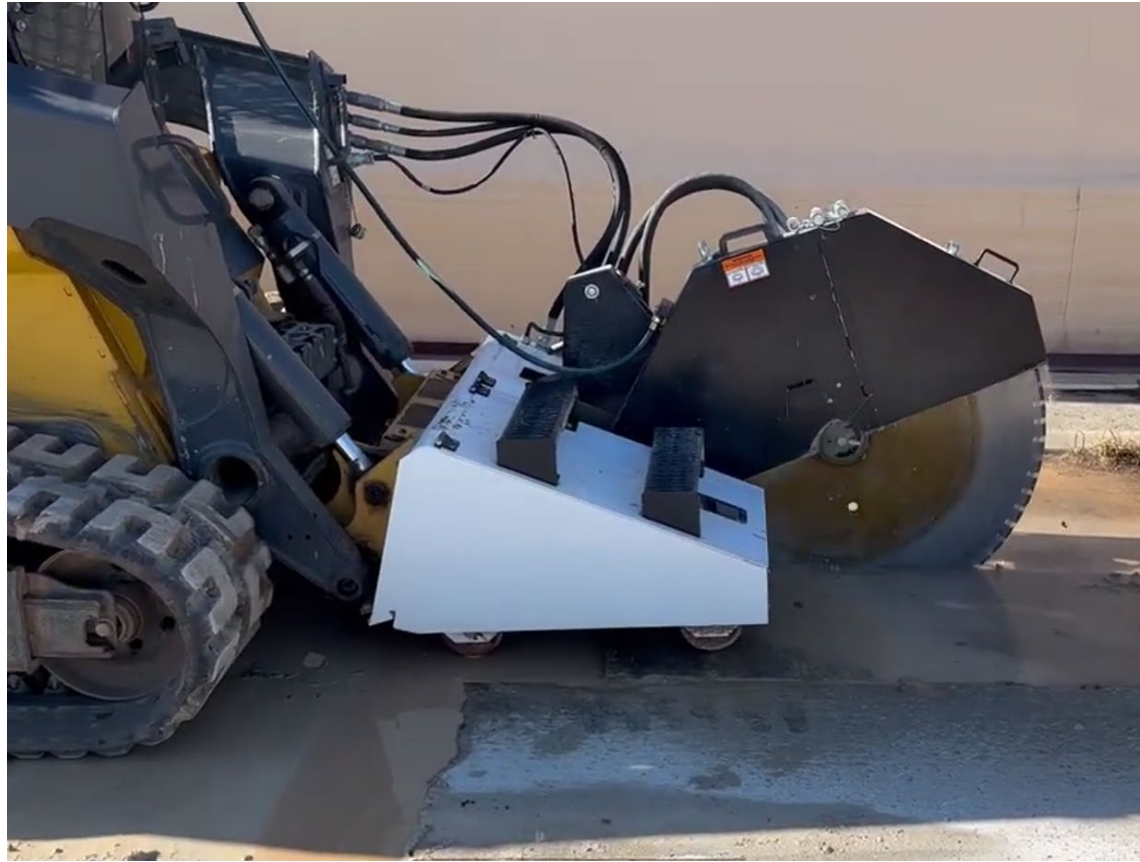
Visit MoDOT's Showcase Homepage to view videos and descriptions of Showcase innovations.  
[www.modot.org/innovations-showcase-homepage](http://www.modot.org/innovations-showcase-homepage)





# **Productivity Category**

# **Skid Steer Mounted Concrete Saw Southeast District**

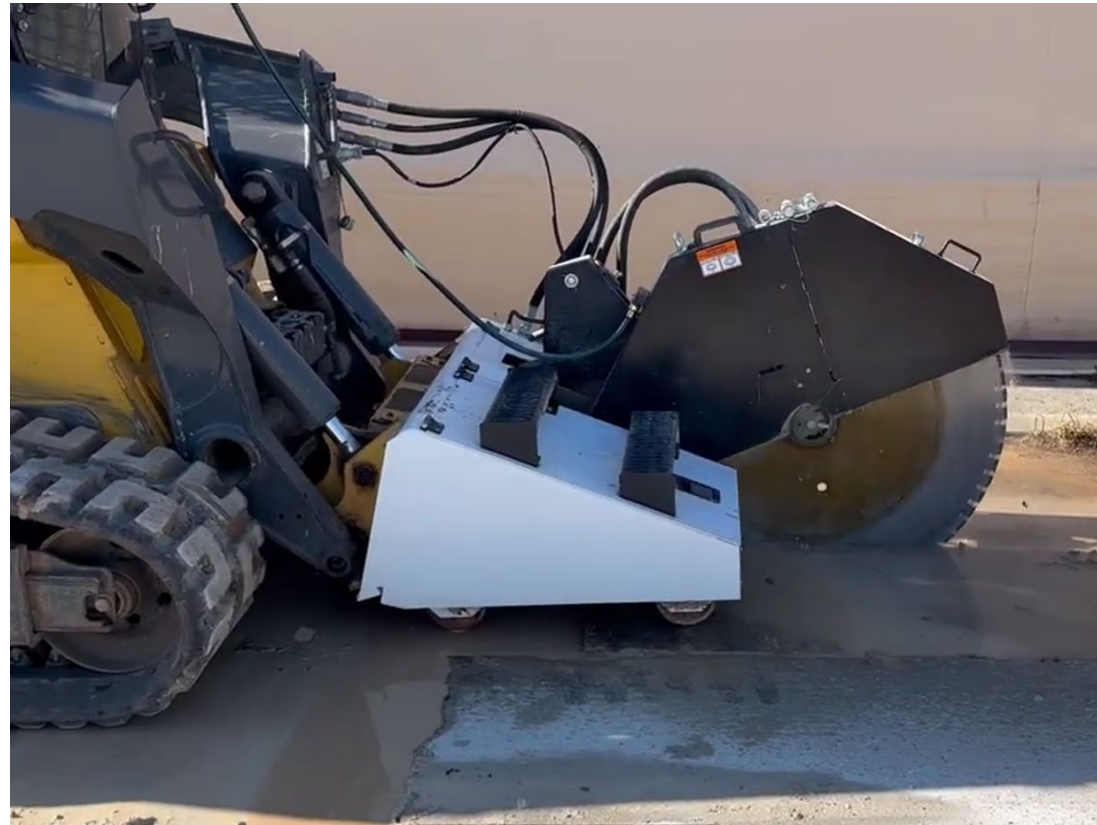


**Productivity Statewide Winner**

# Skid Steer Mounted Concrete Saw Southeast District

The concrete saw mounted on a skid steer replaces heavy walk-behind saws.

- Improves safety and efficiency
- Reduces operator strain
- Minimizes injury risk



# Retro Tek Southwest District



**Productivity Statewide Winner**

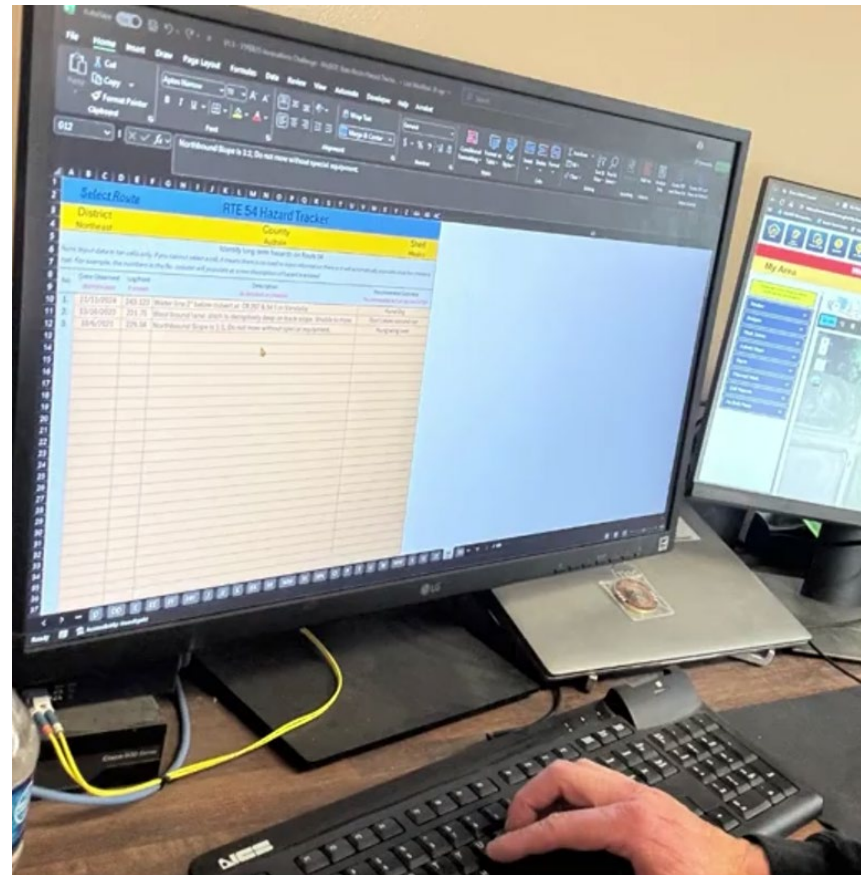
# Retro Tek Southwest District

Retro Tek measures road striping reflectivity at highway speeds.

- Eliminates manual checks
- Avoids unnecessary restriping
- Reduces route inspections
- Simplifies operations
- Keeps workers out of traffic
- Eliminates work zones during reflectivity checks



# Long-Term Field Condition Tracker Northeast District

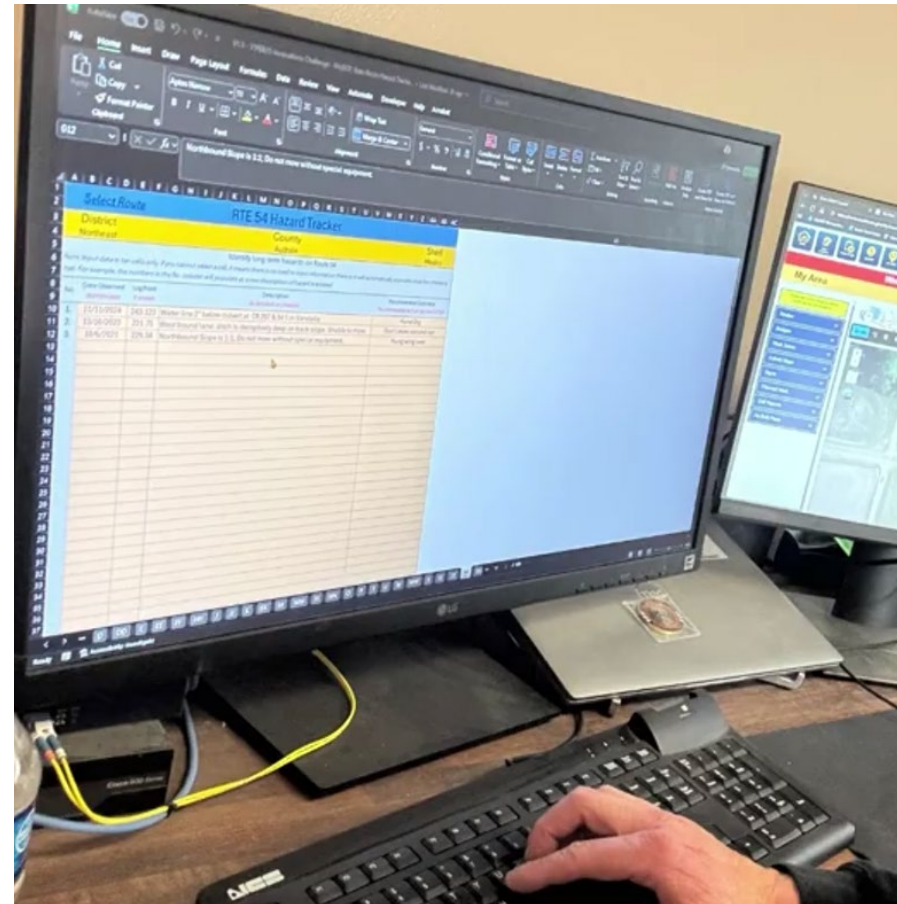


**Productivity Statewide Winner**

# Long-Term Field Condition Tracker Northeast District

This tracker enhances MoDOT's RBA process providing structured documentation of long-term field conditions.

- Allows review of historical data
- Reduces risk
- Improves social awareness



# P.R.I.S.M. Kansas City District



**Productivity Statewide Winner**

# P.R.I.S.M. Kansas City District

P.R.I.S.M. improves efficiency, accuracy, and safety in pavement restriping by combining two striping crews into one coordinated operation.

- Reduces multiple lane closures
- Minimizes traffic exposure
- Reduces traffic disruption
- Improves employee and driver safety






# **Projects Category**


# Traffic Cam Webpage Integration Kansas City District

Live Cameras


 KANSAS CITY SCOUT TRAFFIC CAMERAS

Visit the [MoDOT Traveler Information Map](#) to view more traffic cameras in the Missouri.


I-70 at Prospect Ave.




I-70 at Benton Blvd



I-70 at 18th St.



I-70 at 23rd St.

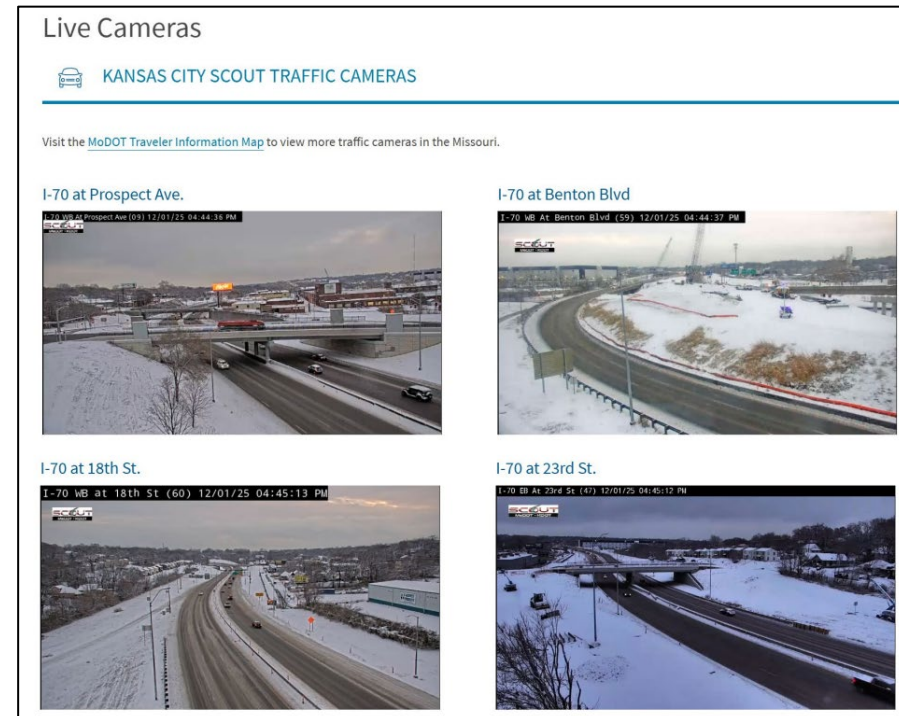


**Projects Statewide Winner**

# Traffic Cam Webpage Integration Kansas City District

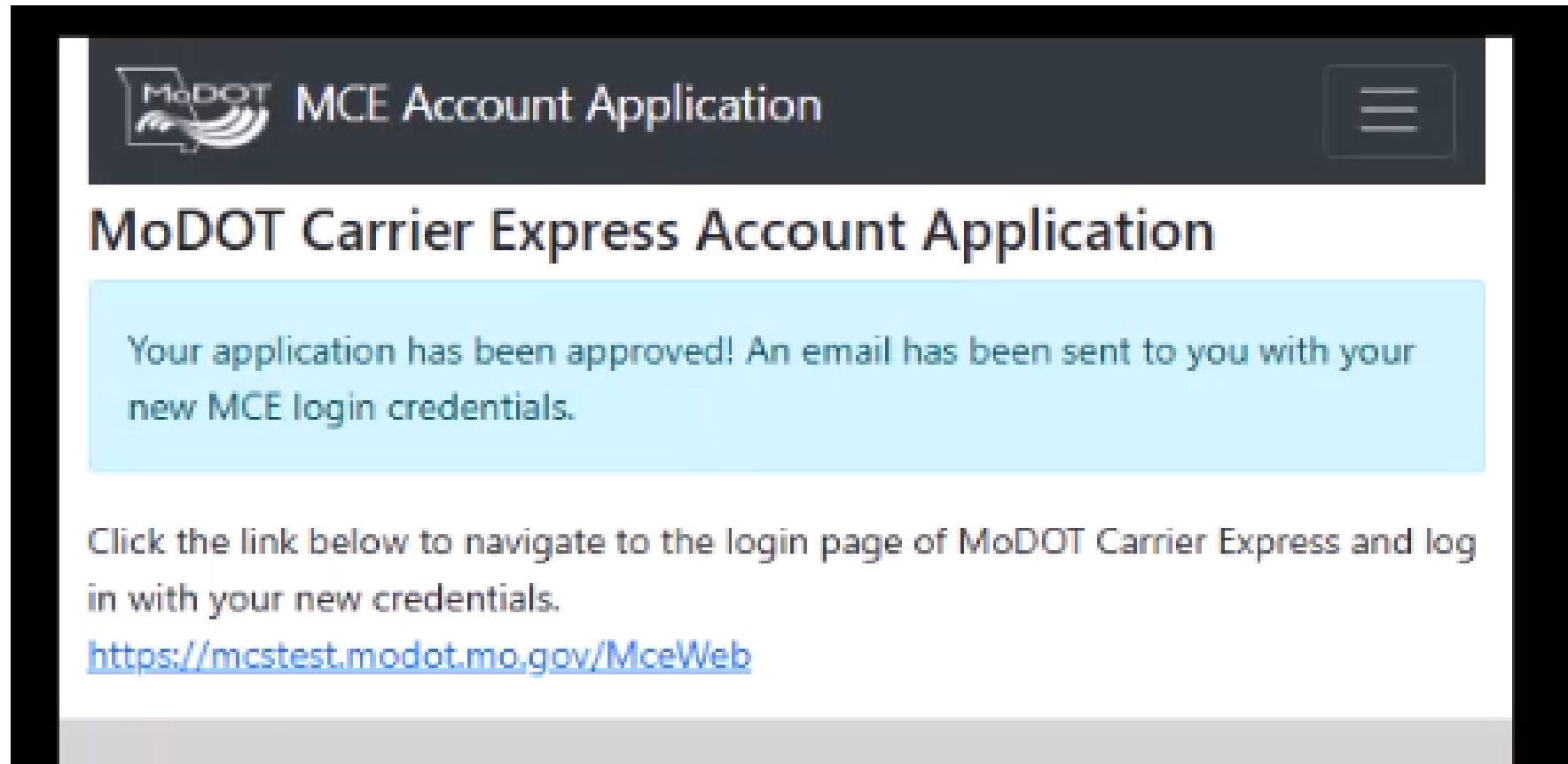
Traffic Cam Webpages integrates traffic cameras into project webpages to improve transparency and user experience. The webpages allow customers to:

- Observe real-time video feeds
- Watch multiple live streams in geographic order
- View construction progress
- Monitor traffic impacts



# MCE Common Customer 2.0

## Motor Carrier Services Division



The screenshot shows a web application interface for MoDOT MCE Account Application. At the top left is the MoDOT logo and the text "MCE Account Application". At the top right is a hamburger menu icon. The main heading is "MoDOT Carrier Express Account Application". Below this is a light blue notification box containing the text: "Your application has been approved! An email has been sent to you with your new MCE login credentials." Below the notification box is a paragraph of text: "Click the link below to navigate to the login page of MoDOT Carrier Express and log in with your new credentials." Below this text is a blue hyperlink: <https://mcstest.modot.mo.gov/MceWeb>.

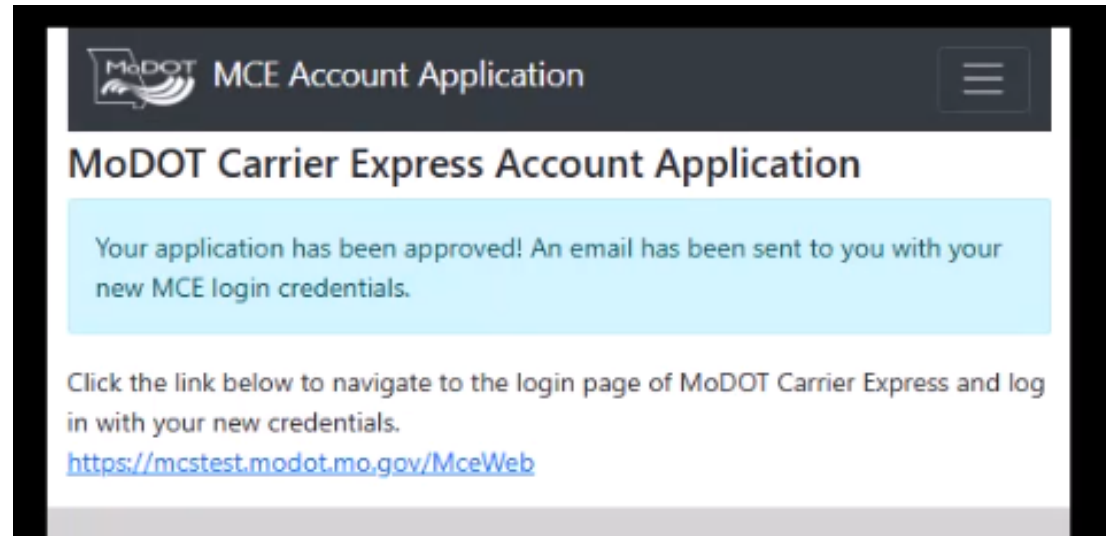
**Projects Statewide Winner**

# MCE Common Customer 2.0

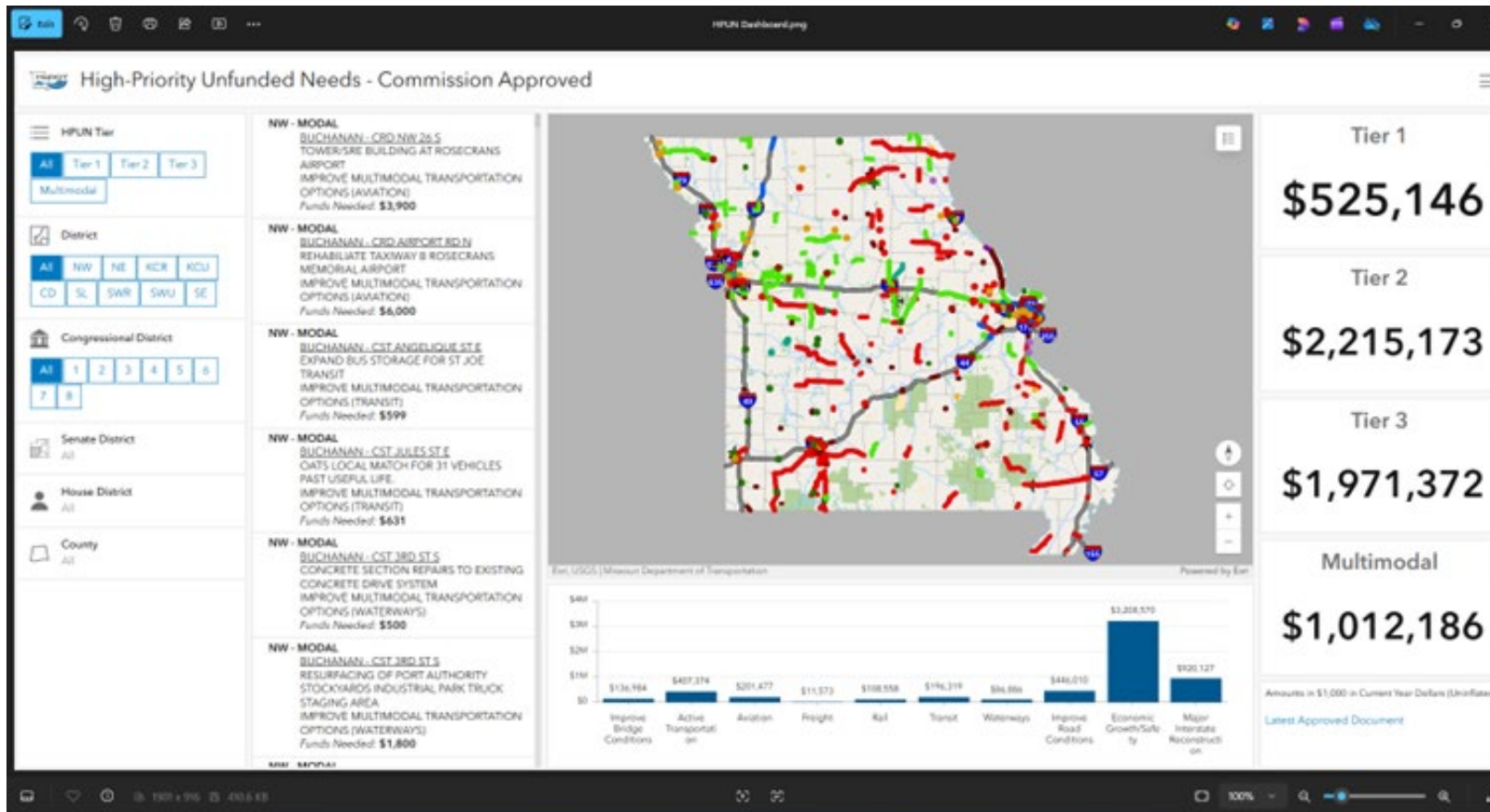
## Motor Carrier Services Division

The CC 2.0 project was developed in-house to modernize and streamline MoDOT's Carrier Express Common Customer application.

- Automates credentialing
- Eliminates manual tasks
- Fully automates OSOW user profiles
- Reducing processing time
- Enforces compliance
- Improves efficiency
- Provides user-friendly experience



# HPUN Dashboard Transportation Planning Division



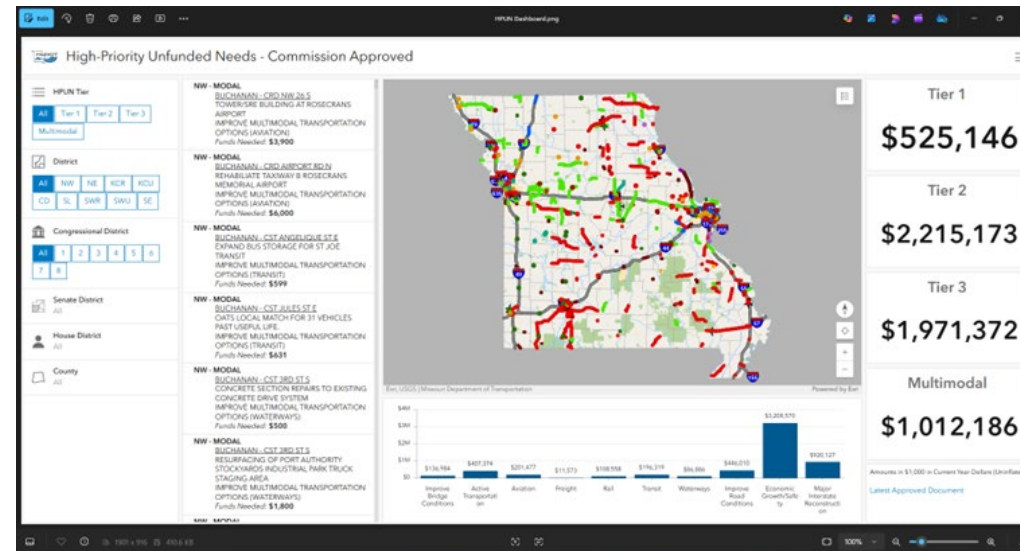
## Projects Statewide Winner

# HPUN Dashboard

## Transportation Planning Division

This ArcGIS-based tool replaces static tables to provide interactive maps and live details for planning partners.

- Streamlines HPUN process
- Improves transparency
- Strengthens funding decisions
- Increases speed of responses



# **Drury Intern Housing Partnership Southwest District**



**Projects Statewide Winner**

# Drury Intern Housing Partnership Southwest District

This innovation establishes a partnership between MoDOT and Drury by providing affordable housing for students to help with recruitment.

- Helps with recruitment
- Enables affordable housing
- Provides a streamline process





# **Tool & Equipment Category**

# Slide-N-Cinch Southeast District



**Tool & Equipment Statewide Winner**

# Slide-N-Cinch Southeast District

Innovation is a sliding ratchet mechanism system to improve load security and flexibility when hauling equipment.

- Ensures secure loads
- Reduces setup time
- Simplifies tie-down process
- Improves safety
- Saves time



# **Sander Calibration Scale Southwest District**



**Tool & Equipment Statewide Winner**

# Sander Calibration Scale Southwest District

This tool accurately measures the weight of salt during the calibration process and quickly attaches to the forks of any equipment.

- Reduces material waste
- Saves money
- Ensures precise calibration
- Improves safety



# Guardrail Debris Pusher Central District



**Tool & Equipment Statewide Winner**

# Guardrail Debris Pusher Central District

The Guardrail Pusher uses a single hydraulic-powered attachment to clear debris from guardrails and bridges, restoring proper drainage quickly.

- Saves time and money
- Increases efficiency
- Improves safety



# **Bolt-On Rubber Track Grouser Northwest District**

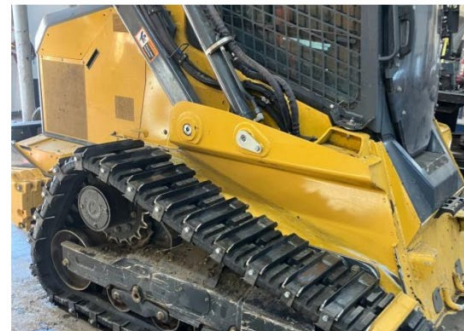


**Tool & Equipment Statewide Winner**

# Bolt-On Rubber Track Grouser Northwest District

This innovation improves traction for skid steers equipped with mulching heads, which often struggle in wet, muddy, snowy, or uneven terrain.

- Increases safety and efficiency
- Improves mobility
- Reduces downtime
- Saves money





# **Director's Awards**

# Patch Marker Central District



**Director's Safety Award**

# Patch Marker Central District

The Patch Marker is a safety-focused solution that allows supervisors to pre-mark asphalt patch locations without leaving their vehicle.

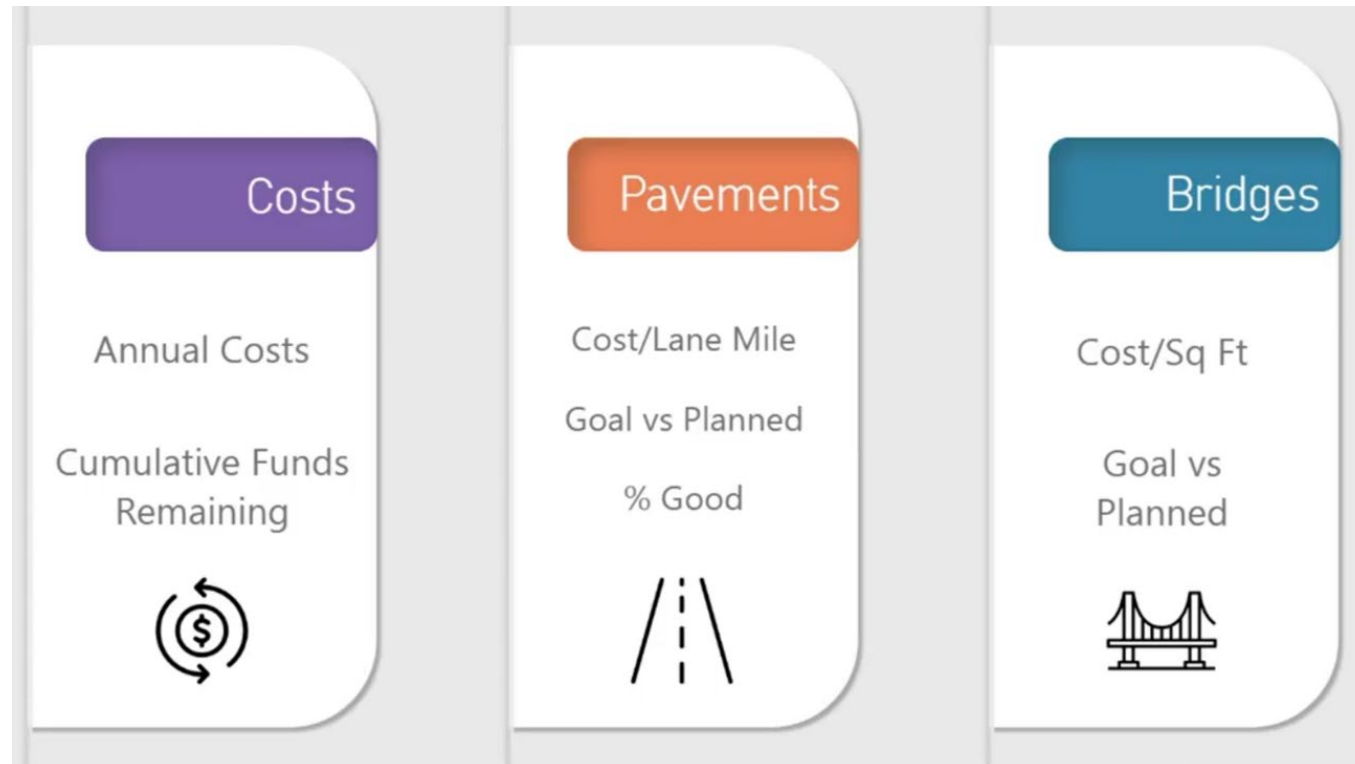
- Streamlines patching operations
- Reduces hazards
- Improves crew safety



## Director's Safety Award

# AMP Results Dashboard

## Transportation Planning Division



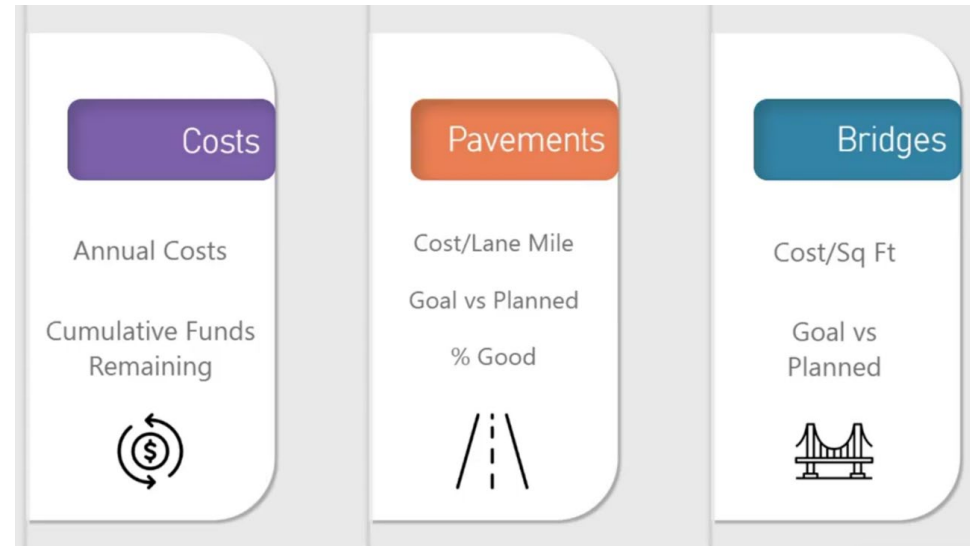
**Director's Service Award**

# AMP Results Dashboard

## Transportation Planning Division

AMP Results Dashboard improves MoDOT's asset management planning process to guide projects that maintain the existing transportation system.

- Improves clarity and usability
- Interactive Power BI dashboard enables quick analysis
- Improves informed decision-making
- Replaces manual processes



## Director's Service Award

# Northeast Stockpile Photogrammetry Northeast District



**Director's Stability Award**

# Northeast Stockpile Photogrammetry Northeast District

Drone-based photogrammetry to replace manual stockpile measurements.

- Improves safety, efficiency, and accuracy
- Captures high-resolution imagery
- Creates precise 3D models
- Delivers consistent inventory estimates
- Reduces labor and time



## Director's Stability Award



**Dickson  
People's Choice  
Award**

# Houston Handy Hopper Southeast District



**Dickson People's Choice Award**

# Houston Handy Hopper Southeast District

The Houston Handy Hopper is a solar-powered pothole material box designed to improve efficiency, safety and accuracy during patching operations.

- Enhances convenience
- Improves safety
- Delivers accurate material
- Increases efficiency



## Dickson People's Choice Award

# Congratulations!



Be Safe Driving Home!



**Please leave your nametag and lanyard in the box by the door when you exit this room.**

**Tear Down Procedure**

**Start with  
Productivity and Project Tables**

**Equipment begins after all  
tables are cleared.**

**PPE must be worn while  
equipment is moving**