



**Missouri's
Local
Program**
*for community
development*

COVER SHEET

(This must accompany your firm's letter of interest and does not count in the page limit)

Firm's Full Legal

Name: ABNA Engineering, Inc.

Firm Contact Name: Stephen Alsbury PE, SE

Contact Email

Address: businessadmin@abnacorp.com

Firm's Mailing Address: 4140 Lindell Blvd.

St. Louis, MO 63108

Work Category:

- Roadway Design
- Trails & Sidewalks
- Construction Inspection
- Traffic Engineering & TEAP
- Structures
- Environmental
- Historic Preservation
- Multimodal Planning / Systems and Facilities Design
- Transportation Planning – **NEW CATEGORY**



4140 Lindell Boulevard
St. Louis, MO 63108
P: [314] 454-0222
www.abnacorp.com

ABNA

Engineering Design • Land Surveying • Construction

AT A GLANCE

ABNA ENGINEERING, INC. was founded in 1994 and has since grown to more than 70 employees. ABNA is 100% W/M/DBE certified with the City of St. Louis, St. Louis Airport Authority, METRO-St. Louis, and MoDOT and is consistently ranked among the Top 25 Engineering Firms by the *St. Louis Business Journal* (2001-2025).

PRINCIPALS

Abe Adewale PE, LSIT
Nicole Adewale Ed.D., LEED AP®

OFFICE LOCATIONS

St. Louis
Burr Ridge (Greater Chicago Area)
Southern Illinois

SERVICES

Site/Civil
Structural
Environmental
Testing & Inspection
Construction Management
Land Surveying
Geotech
GIS/Planning

ABNA is a full-service Civil Engineering, Structural, Transportation, Geotechnical, Environmental, and Surveying firm that has the capacity to provide all services required for MoDOT On-Call Projects. Furthermore, ABNA is MoDOT-Prequalified in each of MoDOT's listed categories (EVERify, Financial Prequal, LPA Basic Training, Bridge Form, and Bridge QC/QA Plan).

ABNA operates on the premise that communication is the key to successful delivery of any project we undertake. Our clients input is valued and welcomed; likewise, we are diligent in offering ideas and processes as well as confirming decisions to our clients on a regular basis.

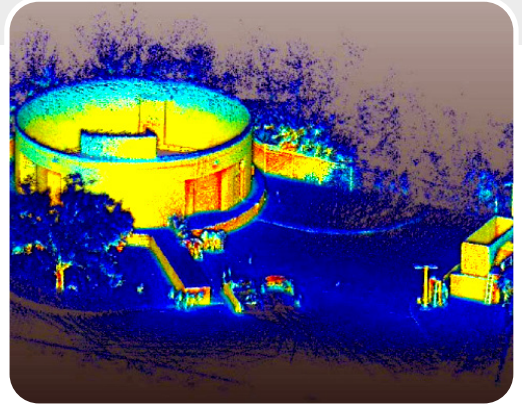
ABNA has a proud history of exceeding client expectations; and it is our goal to position ourselves as a one-stop source for your engineering planning, surveying, design, and construction service needs.



ABNA Engineering, Inc. Headquarters, St. Louis, Missouri

Surveying/Lidar

ABNA supports large and small projects alike by providing survey services such as route surveys, topographic surveys, cross-sections and profiles, and establishing existing, proposed centerline alignments, record research, boundary surveys and adjustments; plotting collected field information; establishing 1st and 2nd order controls, right-of-way monuments, land use determination, complex construction staking, layout, and as-builts. ABNA's survey department consists of five survey crews, a field manager, a survey research technician, the survey manager and additional licensed surveyors. ABNA employs a wide array of survey equipment, which enables efficient completion of projects. These instruments include five full Trimble GPS units, five Nikon Total Station Units equipped with the latest TDS data Collectors, digital levels, and a variety of other conventional survey equipment. Additionally, ABNA's survey staff have extensive experience in the use of state-of-the-art software such as MicroStation, AutoCAD, GEOPAK, MapInfo, Manifold, STAR*NET TDS Survey Link, TopoDOT, and Trimble Geomatics Office. With 5 survey crews, ABNA can rapidly mobilize once work orders are received.



Project: MSD Pump Station (Vance Road)

Project Experience

Sample ABNA experience includes MoDOT's Route I-44 Meramec River Bridges, the Illinois Tollway's I-90/Lee Street Interchange, MoDOT Rte. 115 (Natural Bridge Road) Great Streets Project, City of St. Louis' North & South Broadway Streetscaping, several St. Louis Ward Improvement Projects, Metro's St. Clair County MetroLink Extension, IDOT's I-270 over Chain of Rocks Canal Bridge replacement project, and the MetroLink Cross County Extension.

Roadway Engineering

We offer many transportation related services from trails and sidewalk through Interstate highway design. Services provided include:

- Writing grant and TIP applications
- Planning and Studies
- Obtaining Environmental Permits
- Geometric & Roadway Design
- Drainage Design including Linear Rain Gardens
- Traffic Signal Design
- Lighting Design
- Estimating
- Completing Bid Documents



Project: I-270 North Design Build Bellefontaine Roundabout Design

Project Experience

In the last several years, ABNA has had the opportunity to work on numerous federally funded roadway projects including the I-270 North Design/Build Bellefontaine Roundabout, Jefferson National Expansion Memorial's Park over the Highway, Missouri's Rte. 115 (Natural Bridge Road) Great Streets Project, The City of St. Louis' Washington Ave. Phase 3 Streetscape Project and their Central Business District Streetscape Project, MoDOT New I-64 Design/Build, the New Mississippi River Bridge, MetroLink, Illinois Route 3, the Lindbergh Tunnel, and reconstruction of the I-90/Lee Street Interchange for the Illinois Tollway. Non-roadway projects include the Delmar Loop Trolley, several projects associated with the Chicago to St. Louis High-Speed Rail, and pedestrian and cycling trail projects.

Bridge Engineering

ABNA's Structural Engineering department designs all types of roadway structures, buildings, parking facilities, specialty foundations, pump stations, flood walls, retaining walls, gates, box culverts, dams, walled channels, drop structures, and energy dissipaters. In addition to design, ABNA provides structural inspections of bridges and tunnels as well as load ratings.

Project Experience

ABNA's recent projects include the I-270 North Design/Build Bonus Bridge, Lee Street Bridge over I-90 for the Illinois Tollway, subconsultant support for MoDOT's Poplar Street Bridge Slide, Poplar Street Approach Ramps, Walnut Street Bridge over I-44, Land Bridge over I-44, and the Pine Street Bridge over I-44, Route 141 Bridge over Creve Coeur Creek, and the I-70 Blanchette Memorial Bridge over the Missouri River. ABNA was also selected for 4 bridge replacement projects as part of MoDOT's Safe & Sound 800 bridge program: Rte. TT Bridge over Slough Creek in Saline County, Rte. M over Bridge Creek in Carroll County, Rte. W over Moniteau Creel in Howard County, and Rte. FE over Edmondson Creek in Saline County. Some of our local agency projects include Jefferson Counties Mapaville-Hematite Bridge over Little Creek Tributary, Wilson Hollow Bridge over a Tributary to the Big River, and specialty foundation design for the City of St. Louis' Washington Avenue Phase 3 Streetscape project, and Kiener Plaza.



Project: I-270 North Design/Build Bonus Bridge

Construction Management

ABNA offers many construction related services including estimating, value engineering, construction staking, testing for plumbness of steel and forms, concrete, soil & asphalt testing, project inspection, and field engineering. We can also provide support for scheduling and QA/QC documentation. ABNA's Construction Services, Construction Management, and Engineering staff includes experienced civil engineers and geologists, NBIS, in addition to technical support personnel. ABNA operates an in-house Corps of Engineers Validated and AASHTO-accredited laboratory with state-of-the-art equipment for all testing and inspection tasks. Services provided include:

- Resident Engineering
- Scheduling
- Estimating
- In-place density tests on compacted fill material
- In-place density tests on asphalt
- Field test of concrete and casting
- In-place density tests on asphalt
- Lab compression testing of concrete cylinders in accordance with ASTM Procedures
- Testing and reporting
- Trimming of irregular client cast cylinders to meet ASTM requirements (only if required)
- Atterberg limits determination
- Marshall Stability & Flow (ASTM D 1559)
- Extraction and gradation (ASTM D 2172)
- Bulk specific gravity



Project: Stan Musial/Veterans' Memorial Tollway, Roadway, and Bridge Rehabilitation I-55 (M.P. 12.3) to Army Trail Road (M.P.29.8) CM

Project Experience

ABNA worked on MoDOT's Daniel Boone Bridge Design/Build, The New Mississippi River Bridge, MoDOT New I-64 Design/Build, IDOT's I-55/Route 59 Interchange, and several MetroLink projects such as the Eads Bridge Retrofit and the Cross County Extension. ABNA recently completed construction management services for St. Louis' Washington Avenue Streetscape project and Franklin County's Herbst Road Bridge replacement project. On these projects ABNA was the prime consultant and performed all LPA construction management duties from Resident Engineer through laboratory material testing.

Geotechnical

ABNA has provided Geotechnical services to clients including BJC Healthcare, Bayer (formerly Monsanto), and St. Louis Metropolitan Sewer District. ABNA's Geotechnical Department provides the following services:

- Subsurface Investigation
- Boring Studies
- Slope Stability Assessments
- Foundation Design
- Atterberg Limits Moisture Determination
- Soil Classification
- Moisture Density (Proctor)
- Sieve and Hydrometer Analysis
- Data Collection
- Report Preparation
- Evaluation of Historic Soil Resources



Project: I-64 Daniel Boone Bridge over Missouri River

MoDOT & ABNA Project List

- Route CC Jefferson County for MoDOT
- IMPROVE I-70: Columbia to Kingdom City Design-Build
- IMPROVE I-70: Wentzville to Warrenton Design-Build
- I-270 North Design/Build Southbound I-170 Widening Design M-6073B/Client: Parsons Inc.
- I-270 North Design/Build Bellefontaine Roundabout Design M-6073A / Client: Parsons Inc.
- I-270 North Design/Build Bonus Bridge / Client: Parsons Inc.
- Stan Musial/Veterans' Memorial Tollway, Roadway, and Bridge Rehabilitation (see image in Construction Management section)
- Fractural Critical FC Inspections MOU 7 Liberty MO
- Fractural Critical FC Inspection MOU 6 Sedalia MO
- MoDOT Fracture Critical Inspection MOU 13 Dixon MO
- Consultant On-Call Services/MOU I-55 Sikeston MO Inspections – I-55
- Consultant On-Call CM Services Sikeston MO
- On-Call Services (Asphalt Plant Inspection) Cape Girardeau MO
- ROW Permits Network Extensions & Service Installations – Independent MoDOT Inspections / Client: ADB
- Ackerman Toyota – Boundary Survey / Client: AEDIS
- LPA On-Call Roadway Design – Master Agreement
- On-Call Surveying for Central District – Master Agreement
- Bridge Inspection MOU No. 9 Clay County 068003 NB19(770)
- Excess ROW
- I-70 LID Design of City Arch River / Client: Crawford, Murphy & Tilly, Inc.
- St. Louis City I-64 Bridges 2011-216 / Client: Horner & Shifrin, Inc.
- Sign Inspection Service Agreement / Client: Kwame Building Group, Inc.
- Sub-Surface Utility Engineering Service



LETTER OF INTEREST FOR LPA ON-CALL SERVICES

Category: Construction Inspection

Please accept this letter as a formal request by ABNA Engineering, Inc. to be included on the Missouri Department of Transportation's LPA On-Call list for provision of professional engineering services, specifically in the category of **Construction Inspection**. We are confident ABNA has the experience and expertise to provide all guidance and oversight to successfully execute LPA On-Call projects from concept to completion. Our experience in **Construction Inspection**, highly-experienced staff, and past record of performance—combined with our thorough understanding of MoDOT standards—make us an outstanding candidate for MoDOT's **Construction Inspection** LPA On-Call projects. ABNA's enthusiastic interest in providing these services stems from our desire to deliver services within the required timelines and in a manner that delights MoDOT and benefits the people of the State of Missouri.

PREQUALIFICATION: ABNA is a **MoDOT approved Prequalified Consultant** and is prequalified in each of MoDOT's listed categories (E-Verify, Financial Prequal, LPA Basic Training, Bridge Form and Bridge QC/QA Plan). ABNA is also registered and in good standing to provide professional **Construction Inspection** services to MoDOT for the LPA.

GENERAL EXPERIENCE OF FIRM: ABNA was founded in 1994 by Nicole and Abe Adewale, two enterprising transportation engineers. Since then the company has grown to more than 70 employees. ABNA is a full-service **Civil Engineering, Structural, Transportation, Geotechnical, Environmental** and **Surveying** firm that has the capacity to provide all services required for MoDOT On-Call Projects. ABNA is a W/M/DBE firm that embraces workforce diversity. ABNA's staff represents experienced professional engineers, surveyors, and support staff from several parts of the U.S. and more than ten countries.

ABNA's Construction Management team is multi-certified and OSHA trained to perform projects' needs in accordance to state and industry standards. ABNA's in-house laboratory construction materials testing laboratory is accredited by both MoDOT and the American Association of the State Highway and Transportation Officials (AASHTO) and has been validated by the U.S. Army Corps of Engineers. Our Construction Services group includes eight (8) technicians with certifications in ACI Level I & II, Asphalt, Soil and Nuclear Gauge and MoDOT (Aggregate Technician, Bituminous Technician, Soil Density Technician, Superpave QC/QA, Tension Strength Ration, Concrete Field, Concrete Strength, Bituminous, Superpave, Aggregate, Specific Gravity, Tensile Strength Ratio, Plasticity Index, Concrete Field, Concrete Strength, and HMA Aggregate Test). ABNA's staff includes inspectors to provide on-site inspection of structural steel members as well as NBIS inspectors to handle in-service bridge remediation. (Additionally, should Surveying services be required in this category, ABNA supports large and small projects alike by providing route surveys, topographic surveys, cross-sections and profiles, right-of-way monuments, land use determination, complex construction staking, layout, as-builts, and more.)

PAST PERFORMANCE: The \$125 million Design-Build bridge project includes a complete new reconstruction of **I-64 Daniel Boone Bridge over the Missouri River**. Since construction began in early 2013, ABNA has provided quality control and materials testing. ABNA's construction engineers, field quality control inspectors, and field technicians were responsible for tasks including the following:

concrete placement inspection, concrete sampling & testing (air, slump, & temperature), aggregate quality testing, sieve analysis testing, soil sampling via standard proctor tests, concrete compressive strength tests on concrete test cylinders, sub grade material testing using nuclear moisture density gauges and asphalt placement and sampling, laboratory grout compressive strength testing and laboratory concrete compressive testing, bridge bolt torque inspection, specialty paint inspections and identifying and preparing daily field reports to document deficiencies and completed corrective action. **For our work on this project ABNA received the Concrete Council Quality Award.**

For the **SLU School of Law Building & Garage project**, which entailed construction of the new home of the Saint Louis University School of Law at 100 North Tucker in downtown St. Louis, ABNA provided materials quality control, testing/inspection, and laboratory testing services. ABNA’s responsibilities included inspections for concrete, structural steel, masonry, and fireproofing. ABNA’s Engineering Technicians performed field testing of concrete such as air, slump, and temperature testing, monitoring the placement of concrete, and cylinders breaks for assessing compressive strength analysis. ABNA’s Certified Welding Inspector examined the structural steel erection of field welds, bolts, and metal deck attachments, as well as on-site visual examinations, magnetic particle testing, and bolt torque verifications. ABNA’s Engineering Technician also inspected and collected field samples of grout during the continuous installation and placement of the masonry assemblies. Grout samples were tested for compressive strength and compliance with project specifications. ABNA also inspected the spray-on fireproofing material for thickness verification and density determination.

For the **Eads Bridge project**, owned by the St. Louis Bridge Construction Company, ABNA was responsible for the structural integrity inspection of the upper-level West Approach Roadway and the West Approach Tunnel. Other ABNA tasks consisted of utility verification and preparation of meticulously detailed reports describing the following: condition of the structure, contractor submittal reviews, construction services during the repair work, and post construction tasks. ABNA also supported this rehabilitation with survey elevations of the bridge’s cross beams supporting Metro’s rail lines. ABNA provided safety inspection and flagging to accommodate the ongoing active track operations.

QUALIFICATIONS OF PERSONNEL: ABNA’s Vice President, Construction Engineering, Steven Truemper PE, has more than three decades of civil engineering experience in Construction Engineering, Construction Management, Utility Construction, Pre-Construction, Transportation Engineering, Value Engineering, and Project Estimation. He has

routinely administered construction projects in various counties in the St. Louis Metro Area averaging \$20+ million per year. A seasoned leader, licensed in over fourteen states, Steven is highly skilled in project cost management, scheduling, and ensuring compliance with

Key Project Staff	Project Role	Years of Experience
Steven Truemper PE	Vice President, Construction Engineering Project Manager	31
Richard Schafer	Construction Inspector	26
Andrea Steudeman	Construction Inspector/Geologist	23
LaShonda Neal	Construction Inspector	18

contractual and operational requirements. His responsibilities include initial and final plans, specifications, bid reviews, project costs, project values, schedules, construction oversight, constructability reviews, reviewing public right-of-way plans, utility easements, permitting, as-built plans, and risk management. Steven will be assisted with testing and inspection by **Richard Schafer**, who has 24 years of experience in professional materials testing and inspection on industrial and commercial projects.

These key staff members, as well as those included in the table above, have been selected for their comprehensive, relevant expertise, and availability to commit priority attention to MoDOT LPA On-Call projects. When additional staff support is necessary, especially for multiple simultaneous LPA On-Call assignments, ABNA's construction management team includes a total of thirteen (13) staff members. Our team is committed to executing responsibilities to the highest standards and ensuring all project goals are achieved.

FAMILIARITY/CAPABILITY: ABNA has worked on MoDOT and LPA projects since 1998, and we are familiar with the relevant sections of the Engineering Policy Guide (EPG) and MoDOT's CAD requirements. ABNA has demonstrated our knowledge in relation to our completed work projects including the **Arch Ground Revitalization Program**, the **Route 115 Great Streets Initiative**, **I-44 Improvements** (from Mraz to Geyer), and the **Route 180 Project** (from I-270 to I-170). ABNA consistently tracks current project progress to implement necessary adjustments to assigned staff responsibilities. A review of progress on current projects confirms ABNA is adequately staffed and has the capacity to aggressively pursue MoDOT **Construction Inspection** LPA On-Call services to completion while giving each assignment the appropriate attention to fully meet MoDOT's expectations.

ACCESSIBILITY: Please be assured ABNA will provide MoDOT comprehensive and professional **Construction Inspection** services based on our specialized portfolio of expertise and experience. ABNA's goal is to "Delight Clients." We do so by providing quality work and utilizing innovative methods for effective project management and responsiveness. Specifically, our hands-on approach utilizes both on-site fulfillment of services and communication with clients in-person and via digital and virtual platforms. Thereby, our clients receive transparent and immediate responsiveness which reflects our commitment to efficiency and exemplary service.

Thank you for considering this expression of interest in providing LPA On-Call services to MoDOT. We greatly appreciate this opportunity to provide information about ABNA's qualifications, and we look forward to continued work with MoDOT. Please contact me at (314) 454-0222 for additional information about ABNA's **Construction Inspection** services.

Sincerely,



Steven Truemper PE
Vice President, Construction Engineering