

ADDENDUM NO. 1



TO: All Holders of Plans and Contract
Documents for La Monte TAP-9901(539)
Mason Street Sidewalk Improvements
From Walnut St to Washington St

ISSUED: January 9, 2026

Name of Bidder

Receipt Acknowledged By

This Addendum is hereby made a part of the Contract Documents to the same extent as if it were originally included herein. This Addendum shall be inserted in the Contract Documents and submitted with the Bid, and includes the following items:

CONTRACT DOCUMENTS:

- Itemized Proposal
 - Page 9
 - Bridge
 - Revised Item No. 0110
 - Revised Quantity from “28 LF” to “56 LF”
 - Revised Item No. 0120
 - Revised Quantity from “4.4 CY” to “8.0 CY”
 - Revised Item No. 130
 - Revised Quantity from “250 LBS” to “650 LBS”
 - Revised Item No. 0140
 - Revised Description from “C9x13.4, Grade 50W” to “C9x13.4, Grade A36”
- Applicable Federal Wage Rates
 - Page 69-113
 - Replaced “Federal Prevailing Wage MO20250001 09/05/2025, MOD 10” with “Federal Prevailing Wage MO20260001 01/02/2026 MOD 0”

PLANS

- Quantities and General Notes
 - Sheet 03
 - Summary of Quantities
 - Bridge
 - Revised Item No. 0110
 - Revised Quantity from “28 LF” to “56 LF”
 - Revised Item No. 0120
 - Revised Quantity from “4.4 CY” to “8.0 CY”
 - Revised Item No. 130
 - Revised Quantity from “250 LBS” to “650 LBS”
 - Revised Item No. 0140
 - Revised Description from “C9x13.4, Grade 50W” to “C9x13.4, Grade A36”
 - Quantity Breakdown
 - Sheet 04
 - Revised Table “SIDEWALK HAND-RAILING WITHOUT BALUSTERS.”
 - Revised quantity for Station 12+30.38 from “11.00 LF” to “22.00 LF”
 - Revised quantity for STATION 21+55.19 from “10.00 LF” to “20.00 LF”
 - Revised quantity for STATION 21+95.29 from “7.00 LF” to “14.00 LF”
 - Revised quantity for STATION 12+30.38 from “11.00 LF” to “22.00 LF”
 - Revised quantity for TOTAL from “28.00 LF” to “56.00 LF”
 - Revised quantity for USE from “28 LF” to “56 LF”
 - Pedestrian Bridge
 - Sheet 24
 - Revised Sidewalk Handrailing Detail
 - Revised Detail from “Sidewalk Handrailing with Balusters” to “Sidewalk Handrailing without Balusters”
 - Revised Dimensions of “EAST MASON STREET BRIDGE, STA 21+55.19 – STA 21+65.19”
 - Revised dimensions to represent appropriate dimension scaling
 - Revised Dimensions of “EAST MASON STREET BRIDGE, STA 21+95.29 – STA 22+02.29”
 - Revised dimensions to represent appropriate dimension scaling
 - Revised Callout for stay-in-place forms
 - Revised Callout from “Stay-In-Place Forms” to “2 in Type C 16 Ga. Corrugated Metal Decking on Top of Bottom Flange”
 - Revised General Notes:
 - Revised General Notes to clarify C9x13.4 material and protective coating information
 - Revised General Notes to clarify corrugated metal stay-in-lace forms material

Sincerely,



Mitch Gibler
Project Manager

ENGINEER'S BID SCHEDULE
LA MONTE MASON STREET SIDEWALK IMPROVEMENTS
TAP-9901(539)
1/6/2026



LINE NO.	ITEM NO.	DESCRIPTION	UNIT	QUANTITY	UNIT PRICE	AMOUNT
ROADWAY						
0010	202-20.10	REMOVAL OF IMPROVEMENTS	LS	1	\$ -	\$ -
0020	206-30.00	CLASS 3 EXCAVATION	CY	8.0	\$ -	\$ -
0030	616-10.25	CHANNELIZER (TRIM-LINE)	EACH	40	\$ -	\$ -
0040	618-10.00	MOBILIZATION	LS	1	\$ -	\$ -
0050	627-40.00	CONTRACTOR FURNISHED SURVEYING AND STAKING	LS	1	\$ -	\$ -
0060	725-03.12	12 IN. PIPE GROUP B	LF	143	\$ -	\$ -
SIGNING, STRIPING, SIGNALS, LIGHTING						
0070	616-10.05	CONSTRUCTION SIGNS	SF	76	\$ -	\$ -
0080	620-00.15	PREFORMED THERMOPLASTIC PAVEMENT MARKING, 24 IN. WHITE	LF	30	\$ -	\$ -
0090	620-00.36	PREFORMED THERMOPLASTIC PAVEMENT MARKING, 30 IN WHITE MIDBLOCK	EACH	43	\$ -	\$ -
0100	902-08.33	PED CROSSING SIGNS	SF	38	\$ -	\$ -
BRIDGE						
0110	608-40.23	SIDEWALK HAND-RAILING WITHOUT BALUSTERS	LF	56	\$ -	\$ -
0120	703-42.14	CLASS B-2 CONCRETE	CY	8	\$ -	\$ -
0130	706-10.00	REINFORCING STEEL	LBS	650	\$ -	\$ -
0140	712-99.11	C9X13.4, GRADE A36	LBS	730	\$ -	\$ -
BIKE/PED FACILITIES						
0150	207-10.00	LINEAR GRADING CLASS 1	STA	17.3	\$ -	\$ -
0160	304-05.04	TYPE 5 AGGREGATE FOR BASE (4 IN. THICK)	SY	1005	\$ -	\$ -
0170	310-50.03	GRAVEL (A) OR CRUSHED STONE (B)	SY	100	\$ -	\$ -
0180	502-11.06	4 IN. CONCRETE (NON-REINF.)	SY	662.4	\$ -	\$ -
0190	502-11.07	7 IN. CONCRETE (NON-REINF.)	SY	28.2	\$ -	\$ -
0200	502-11.08	8 IN. CONCRETE (NON-REINF.)	SY	234.2	\$ -	\$ -
0210	603-99.02	WATER VALVE HEIGHT ADJUSTMENT	EACH	4	\$ -	\$ -
0220	603-99.02	WATER METER HEIGHT ADJUSTMENT	EACH	1	\$ -	\$ -
0230	608-10.10	CONCRETE CURB RAMP	SY	122.2	\$ -	\$ -
0240	608-10.12	TRUNCATED DOMES	SF	130	\$ -	\$ -
LANDSCAPING/STREETSCAPING						
0250	805-10.00A	SEEDING-COOL SEASON GRASSES	ACRE	0.1	\$ -	\$ -
0260	806-10.19	SILT FENCE	LF	1266.1	\$ -	\$ -

BASE BID \$ -

ACKNOWLEDGEMENT: EACH BIDDER SHALL ACKNOWLEDGE RECEIPT OF
ADDENDA BY THEIR SIGNATURE AFFIXED HERETO AND ADDENDUM NOTED.

CONTRACTOR: _____

SIGNATURE: _____

ADDENDUM NO(S) _____

PHONE: _____

DATE: _____

"General Decision Number: MO20260001 01/02/2026

Superseded General Decision Number: MO20250001

State: Missouri

Construction Types: Heavy and Highway

Counties: Missouri Statewide.

HEAVY AND HIGHWAY CONSTRUCTION PROJECTS

Modification Number	Publication Date
0	01/02/2026

CARP0002-002 05/01/2024

ST. LOUIS COUNTY AND CITY

	Rates	Fringes
Carpenters.....	\$ 41.71	21.85

CARP0005-006 05/01/2024		

CASS (Richards-Gebauer AFB ONLY), CLAY, JACKSON, PLATTE AND RAY COUNTIES

	Rates	Fringes
Carpenters:		
CARPENTERS & LATHERS.....	\$ 44.63	22.40
MILLWRIGHTS & PILEDRIVERS...	\$ 44.63	22.40

CARP0011-001 05/01/2024		

	Rates	Fringes
Carpenter and Piledriver		
ADAIR, AUDRAIN (West of Hwy 19), BOONE, CALLAWAY, CHARITON, COLE, COOPER, HOWARD, KNOX, LINN, MACON, MILLER, MONITEAU, MONROE, OSAGE, PUTNAM, RANDOLPH, SCHUYLER, SHELBY AND SULLIVAN COUNTIES.....	\$ 35.61	22.40
ATCHISON, ANDREW, BATES, CALDWELL, CARROLL, DAVIESS, DEKALB, GENTRY, GRUNDY, HARRISON, HENRY, HOLT, LIVINGSTON, MERCER, NODAWAY, ST. CLAIR, SALINE AND WORTH COUNTIES.....	\$ 34.98	22.40
AUDRAIN (East of Hwy.19), RALLS, MARION, LEWIS, CLARK AND SCOTLAND COUNTIES.	\$ 35.61	22.40
BARRY, BARTON, CAMDEN, CEDAR, CHRISTIAN, DADE, DALLAS, DOUGLAS, GREENE, HICKORY, JASPER, LACLEDE, LAWRENCE, MCDONALD, NEWTON, OZARK, POLK,		

STONE, TANEY, VERNON, WEBSTER AND WRIGHT COUNTIES..\$ 33.25	22.40
BENTON, MORGAN AND PETTIS...\$ 34.98	22.40
BOLLINGER, BUTLER, CAPE GIRARDEAU, DUNKLIN, MISSISSIPPI, NEW MADRID, PEMISCOT, PERRY, STE. GENEVIEVE, SCOTT, STODDARD AND WAYNE COUNTIES.....\$ 35.37	22.40
BUCHANAN, CLINTON, JOHNSON AND LAFAYETTE COUNTIES.....\$ 34.98	22.40
CARTER, HOWELL, OREGON AND RIPLEY COUNTIES.....\$ 34.04	22.40
CRAWFORD, DENT, GASCONADE, IRON, MADISON, MARIES, MONTGOMERY, PHELPS, PULASKI, REYNOLDS, SHANNON AND TEXAS COUNTIES.....\$ 35.37	22.40
FRANKLIN COUNTY.....\$ 42.19	22.40
JEFFERSON AND ST. CHARLES COUNTIES.....\$ 42.19	22.40
LINCOLN COUNTY.....\$ 38.04	22.40
PIKE, ST. FRANCOIS AND WASHINGTON COUNTIES.....\$ 36.13	22.40
WARREN COUNTY.....\$ 38.04	22.40

ELEC0001-002 06/22/2025

BOLLINGER, BUTLER, CAPE GIRARDEAU, CARTER, DUNKLIN, FRANKLIN,
IRON, JEFFERSON, LINCOLN, MADISON, MISSISSIPPI, NEW MADRID,
PEMISCOT, PERRY, REYNOLDS, RIPLEY, ST. CHARLES, ST. FRANCOIS,
ST. LOUIS (City and County), STE. GENEVIEVE, SCOTT, STODDARD,
WARREN, WASHINGTON AND WAYNE COUNTIES

	Rates	Fringes
Electricians.....\$ 49.29		33.642

ELEC0002-001 08/31/2025

ADAIR, AUDRAIN, BOONE, CALLAWAY, CAMDEN, CARTER, CHARITON,
CLARK, COLE, COOPER, CRAWFORD, DENT, FRANKLIN, GASCONADE,
HOWARD, HOWELL, IRON, JEFFERSON, KNOX, LEWIS, LINCON, LINN,
MACON, MARIES, MARION, MILLER, MONITEAU, MONROE, MONTGOMERY,
MORGAN, OREGON, OSAGE, PERRY, PHELPS, PIKE, PULASKI, PUTNAM,
RALLS, RANDOLPH, REYNOLDS, RIPLEY, ST. CHARLES, ST. FRANCOIS,
ST. LOUIS (City and County), STE. GENEVIEVE, SCHUYLER,
SCOTLAND, SHANNON, SHELBY, SULLIVAN, TEXAS, WARREN AND
WASHINGTON COUNTIES

	Rates	Fringes
Line Construction:		
Equipment Operator.....\$ 49.68		36.5%+7.50
Groundman & Truck Driver....\$ 37.95		36.5%+7.50
Lineman & Cable Splicer.....\$ 57.88		36.5%+7.50

ELEC0053-005 08/31/2025

ANDREW, ATCHINSON, BARRY, BARTON, BATES, BENTON, BUCHANAN,
CALDWELL, CARROLL, CASS, CEDAR, CHRISTIAN, CLAY, CLINTON, DADE,
DALLAS, DAVIES, DEKALB, DOUGLAS, GENTRY, GREENE, GRUNDY,
HARRISON, HENRY, HICKORY, HOLT, LAFAYETTE, JACKSON, JASPER,

LACLEDE, LAWRENCE, LIVINGSTON, JOHNSON, MCDONALD, MERCER,
 NEWTON, NODAWAY, OZARK, PETTIS, PLATTE, POLK, RAY, SALINE, ST.
 CLAIR, STONE, TANEY, VERNON, WEBSTER, WORTH AND WRIGHT COUNTIES

	Rates	Fringes
--	-------	---------

Line Construction:

Groundman Powderman.....	\$ 38.44	1.5%+20.18
Groundman.....	\$ 35.86	1.5%+25.34
Lineman Operator.....	\$ 52.45	1.5%+19.34
Lineman.....	\$ 58.15	1.5%+26.69

 ELEC0095-001 06/01/2025

BARRY, BARTON, CEDAR, DADE, JASPER, LAWRENCE, MCDONALD, NEWTON,
 ST CLAIR, AND VERNON COUNTIES

	Rates	Fringes
--	-------	---------

Electricians:

Cable Splicers.....	\$ 25.40	12.19
Electricians.....	\$ 32.25	20.81

 ELEC0124-007 09/01/2025

BATES, BENTON, CARROLL, CASS, CLAY, COOPER, HENRY, JACKSON,
 JOHNSON, LAFAYETTE, MORGAN, PETTIS, PLATTE, RAY AND SALINE
 COUNTIES:

	Rates	Fringes
--	-------	---------

Electricians.....	\$ 54.01	27.85
-------------------	----------	-------

 ELEC0257-003 03/01/2025

AUDRAIN (Except Cuivre Township), BOONE, CALLAWAY, CAMDEN,
 CHARITON, COLE, CRAWFORD, DENT, GASCONADE, HOWARD, MARIES,
 MILLER, MONITEAU, OSAGE, PHELPS AND RANDOLPH COUNTIES

	Rates	Fringes
--	-------	---------

Electricians:

Cable Splicers.....	\$ 30.42	16.085
Electricians.....	\$ 40.50	23.26

 ELEC0350-002 12/01/2024

ADAIR, AUDRAIN (East of Highway 19), CLARK, KNOX, LEWIS, LINN,
 MACON, MARION, MONROE, MONTGOMERY, PIKE, PUTNAM, RALLS,
 SCHUYLER, SCOTLAND, SHELBY AND SULLIVAN COUNTIES

	Rates	Fringes
--	-------	---------

Electricians.....	\$ 37.60	22.145
-------------------	----------	--------

 ELEC0453-001 09/01/2024

	Rates	Fringes
--	-------	---------

Electricians:

CHRISITAN, DALLAS,
DOUGLAS, GREENE, HICKORY,
HOWELL, LACLEDE, OREGON,
OZARK, POLK, SHANNON,
WEBSTER and WRIGHT COUNTIES.\$ 32.40 19.11
PULASKI and TEXAS COUNTIES..\$ 39.70 19.84
STONE and TANEY COUNTIES....\$ 28.65 18.34

ELEC0545-003 06/01/2025

ANDREW, BUCHANAN, CLINTON, DEKALB, ATCHISON, HOLT, MERCER,
GENTRY, HARRISON, DAVIESS, GRUNDY, WORTH, LIVINGSTON, NODAWAY,
AND CALDWELL COUNTIES

	Rates	Fringes
Electricians:.....	\$ 43.20	21.50

ELEC0702-004 01/06/2025

BOLLINGER, BUTLER, CAPE GIRARDEAU, DUNKLIN, MADISON,
MISSISSIPPI, NEW MADRID, PEMISCOT, SCOTT, STODDARD AND WAYNE
COUNTIES

	Rates	Fringes
Line Construction:		
Groundman - Class A.....	\$ 38.18	29%+8.85
Groundman-Equipment		
Operator Class II (all		
other equipment).....	\$ 46.49	29%+8.85
Heavy-Equipment Operator		
Class I (all crawler type		
equipment D-4 and larger)...	\$ 52.13	29%+8.85
Lineman.....	\$ 74.55	29%+8.85

ENGI0101-001 05/01/2025

AREA 1
ANDREW, ATCHISON, BATES, BENTON, BUCHANAN, CALDWELL, CARROLL,
CHARITON, CLINTON, COOPER, DAVIESS, DEKALB, GENTRY, GRUNDY,
HARRISON, HENRY, HOLT, HOWARD, JOHNSON, LAFAYETTE, LINN,
LIVINGSTON, MERCER, NODAWAY, PETTIS, SALINE, SULLIVAN AND WORTH
COUNITES

	Rates	Fringes
Power equipment operators:		
GROUP 1.....	\$ 38.83	21.87
GROUP 2.....	\$ 38.43	21.87
GROUP 3.....	\$ 36.43	21.87

POWER EQUIPMENT OPERATORS CLASSIFICATIONS

GROUP 1: Asphalt roller operator, finish; asphalt paver and
spreader; asphalt plant operator; auto grader or trimmer or
sub-grader; backhoe; blade operator (all types); boilers -
2; booster pump on dredge; bulldozer operator; boring
machine (truck or crane mounted); clamshell operator;
concrete mixer paver; concrete plant operator; concrete
pump operator; crane operator; derrick or derrick trucks;
ditching machine; dragline operator; dredge engineman;

dredge operator; drill cat with compressor mounted (self-contained) or similar type self-propelled rotary drill (not air tract); drilling or boring machine (rotary-self-propelled); finishing machine operator; greaser; high loader-fork lift-skid loader (all types); hoisting engineer (2 active drums); locomotive operator (standard gauge); mechanics and welders (field and plants); mucking machine operator; pile drive operator; pitman crane or boom truck (all types); push cat; quad track; scraper operators (all types); shovel operator; sideboom cats; side discharge spreader; skimmer scoop operators; slip form paver operator (CMI, Rex, Gomeco or equal); la tourneau rooter (all tiller types); tow boat operator; truck crane; wood and log chippers (all types).

GROUP 2: A-frame truck operator; articulated dump truck; back filler operator; boilers (1); chip spreader; churn drill operator; compressor; concrete mixer operator, skip loader; concrete saws (self-propelled); conveyor operator; crusher operator; distributor operator; elevating grader operator; farm tractor (all attachments); fireman rig; float operator; form grade operator; hoisting engine (one drum); maintenance operator; multiple compactor; pavement breaker, self-propelled hydra-hammer (or similar type); paymill operator; power shield; pumps; roller operator (with or without blades); screening and washing plant; self-propelled street broom or sweeper; siphons and jets; straw blower; stump cutting machine; siphons and jets; tank car heater operator (combination boiler and booster); welding machine; vibrating machine operator (not hand held); welding machine.

GROUP 3: (a) Oiler;
(b) Oiler driver
(c) Mechanic.

HOURLY PREMIUMS:

THE FOLLOWING CLASSIFICATIONS SHALL RECEIVE (\$.25) ABOVE GROUP 1 RATE: Dragline operator - 3 yds. & over; shovel 3 yds. & over; clamshell 3 yds. & over; Crane, rigs or piledrivers, 100' of boom or over (incl. jib.), hoist - each additional active drum over 2 drums

THE FOLLOWING CLASSIFICATIONS SHALL RECEIVE (\$.50) ABOVE GROUP 1 RATE: Tandem scoop operator; crane, rigs or piledrivers 150' to 200' of boom (incl. jib.)

THE FOLLOWING CLASSIFICATIONS SHALL RECEIVE (\$.75) ABOVE GROUP 1 RATE: Crane rigs, or piledrivers 200 ft. of boom or over (including jib.)

ENGI0101-005 04/01/2025

CASS, CLAY, JACKSON, PLATTE AND RAY COUNTIES

	Rates	Fringes
Power equipment operators:		
GROUP 1.....	\$ 40.17	22.29
GROUP 2.....	\$ 39.13	22.29
GROUP 3.....	\$ 34.66	22.29
GROUP 4.....	\$ 38.01	22.29

POWER EQUIPMENT OPERATORS CLASSIFICATIONS

GROUP 1: Asphalt roller operator, finish; asphalt paver and spreader; asphalt plant operator; auto grader or trimmer or sub-grader; backhoe; blade operator (all types); boilers-2; booster pump on dredge; boring machine (truck or crane mounted); bulldozer operator; clamshell operator; concrete cleaning decontamination machine operator; concrete mixer paver; concrete plant operator; concrete pump operator; crane operator; derrick or derrick trucks; ditching machine; dragline operator; dredge engineman; dredge operator; drillcat with compressor mounted (self-contained) or similar type self propelled rotary drill (not air tract); drilling or boring machine (rotary - self-propelled); finishing machine operator; greaser; heavy equipment robotics operator/mechanic; horizontal directional drill operator; horizontal directional drill locator; loader-forklift - skid loader (all types); hoisting engineer (2 active drums); locomotive operator (standard guage); master environmental maintenance mechanic; mechanics and welders (field and plants); mucking machine operator; piledrive operator; pitman crane or boom truck (all types); push cat; quad-track; scraper operators (all types); shovel operator; side discharge spreader; sideboom cats; skimmer scoop operator; slip-form paver (CMI, REX, Gomaco or equal); la tourneau rooter (all tiller types); tow boat operator; truck crane; ultra high perssure waterjet cutting tool system operator/mechanic; vacuum blasting machine operator/mechanic; wood and log chippers (all types)

GROUP 2: ""A"" Frame truck operator; back filler operator; boilers (1); chip spreader; churn drill operator; concrete mixer operator, skip loader; concrete saws (self-propelled); conveyor operator; crusher operator; distributor operator; elevating grader operator; farm tractor (all attachments); fireman rig; float operator; form grader operator; hoisting engine (1 drum); maintenance operator; multiple compactor; pavement breaker, self-propelled hydra- hammer (or similar type); power shield; paymill operator; pumps; siphons and jets; stump cutting machine; tank car heater operator (combination boiler and booster); compressor; roller operator (with or without blades); screening and washing plant; self-propelled street broom or sweeper; straw blower; tank car heater operator (combination boiler and booster); vibrating machine operator (not hand held)

GROUP 3: Oilers

GROUP 4: Oiler Driver (All Types)

FOOTNOTE:

HOURLY PREMIUMS FOLLOWING CLASSIFICATIONS SHALL RECEIVE (\$1.00) ABOVE GROUP 1 RATE:

Clamshells - 3 yd. capacity or over; Cranes or rigs, 80 ft. of boom or over (including jib); Draglines, 3 yd. capacity or over;

Piledrivers 80 ft. of boom or over (including jib);

Shovels & backhoes, 3 yd. capacity or over.

ENGI0101-022 05/01/2025

BARRY, BARTON, CAMDEN, CEDAR, CHRISTIAN, DADE, DALLAS, DOUGLAS, GREENE, HICKORY, JASPER, LACLEDE, LAWRENCE, MCDONALD, NEWTON,

OZARK, POLK, ST. CLAIR, STONE, TANEY, VERNON, WEBSTER AND
WRIGHT COUNTIES and CITY OF SPRINGFIELD

	Rates	Fringes
Power equipment operators:		
GROUP 1.....	\$ 36.60	19.32
GROUP 2.....	\$ 36.25	19.32
GROUP 3.....	\$ 36.05	19.32
GROUP 4.....	\$ 34.00	19.32

POWER EQUIPMENT OPERATORS CLASSIFICATIONS

GROUP 1: Asphalt finishing machine & trench widening spreader; asphalt plant console operator; autograder; automatic slipform paver; backhoe; blade operator - all types; boat operator - tow; boilers-2; central mix concrete plant operator; clamshell operator; concrete mixer paver; crane operator; derrick or derrick trucks; ditching machine; dozer operator; dragline operator; dredge booster pump; dredge engineman; dredge operator; drill cat with compressor mounted on cat; drilling or boring machine rotary self-propelled; highloader; hoisting engine - 2 active drums; launch hammer wheel; locomotive operator; - standard guage; mechanic and welders; mucking machine; off-road trucks; piledriver operator; pitman crane operator; push cat operator; quad trac; scoop operator - all types; shovel operator; sideboom cats; skimmer scoop operators; trenching machine operator; truck crane.

GROUP 2: A-frame; asphalt hot-mix silo; asphalt plant fireman (drum or boiler); asphalt plant man; asphalt plant man; asphalt plant mixer operator; asphalt roller operator; backfiller operator; barber-greene loader; boat operator (bridges and dams); chip spreader; concrete mixer operator - skip loader; concrete plant operator; concrete pump operator; crusher operator; dredge oiler; elevating grader operator; fork lift; greaser-fleet; hoisting engine - 1; locomotive operator - narrow gauge; multiple compactor; pavement breaker; powerbroom - self-propelled; power shield; rooter; side discharge concrete spreader; slip form finishing machine; stumpcutter machine; throttle man; tractor operator (over 50 h.p.); winch truck.

GROUP 3: Boilers - 1; chip spreader (front man); churn drill operator; clef plane operator; concrete saw operator (self-propelled); curb finishing machine; distributor operator; finishing machine operator; flex plane operator; float operator; form grader operator; pugmill operator; roller operator, other than high type asphalt; screening & washing plant operator; siphons & jets; sub-grading machine operator; spreader box operator, self-propelled (not asphalt); tank car heater operator (combination boiler & booster); tractor operator (50 h.p. or less); Ulmac, Ulric or similar spreader; vibrating machine operator, not hand;

GROUP 4: Grade checker; Oiler; Oiler-Driver

HOURLY PREMIUMS:

The following classifications shall receive \$.25 above GROUP 1 rate:
Clamshells - 3 yds. or over; Cranes - Rigs or Piledrivers, 100 ft. of boom or over (including jib);

Draglines - 3 yds. or over; Hoists - each additional active drum over 2 drums; Shovels - 3 yds. or over;

The following classifications shall receive \$.50 above GROUP 1 rate:

Tandem scoop operator; Cranes - Rigs or Piledrivers, 150 ft. to 200 ft. of boom (including jib); Tandem scoop.

The following classifications shall receive \$.75 above GROUP 1 rate:

Cranes - Rigs or Piledrivers, 200 ft. of boom or over (including jib.).

ENGI0513-004 05/05/2025

FRANKLIN, JEFFERSON, LINCOLN, ST CHARLES, AND WARREN COUNTIES

	Rates	Fringes
Power equipment operators:		
GROUP 1.....	\$ 45.96	30.96
GROUP 2.....	\$ 45.96	30.96
GROUP 3.....	\$ 44.66	30.96
GROUP 4.....	\$ 44.22	30.96

POWER EQUIPMENT OPERATORS CLASSIFICATIONS

GROUP 1: Backhoe, Cable; Backhoe, Hydraulic (2 cu yds bucket and under regardless of attachment, one oiler for 2 or 3, two oilers for 4 through 6); Backhoe, Hydraulic over 2 cu yds; Cableway; Crane, Crawler or Truck; Crane, Hydraulic - Truck or Cruiser mounted, 16 tons and over; Crane, Locomotive; crane with boom including jib over 100 ft from pin to pin; Crane using rock socket tool; Derrick, Steam; Derrick Car and Derrick Boat; Dragline, 7 cu yds and over; Dredge; Gradall, Crawler or tire mounted; Locomotive, Gas, Steam & other powers; Pile Driver, Land or Floating; Scoop, Skimmer; Shovel, Power (Electric, Gas, Steam or other powers); Shovel, Power (7 cu yds and over); Switch Boat; Whirley; Air Tugger with air compressor; Anchor Placing Barge; Asphalt Spreader; Athey Force Feeder Loader, self-propelled; Backfilling Machine; Boat Operator - Push Boat or Tow Boat (job site); Boiler, High Pressure Breaking in Period; Boom Truck, Placing or Erecting; Boring Machine, Footing Foundation; Bullfloat; Cherry Picker; Combination Concrete Hoist and Mixer (such as Mixermobile); Compressor, Two 125 CFM and under; Compressor, Two through Four over 125 CFM; Compressor when operator runs throttle; Concrete Breaker (Truck or Tractor mounted); Concrete Pump (such as Pumpcrete machine); Concrete Saw (self-propelled); Concrete Spreader; Conveyor, Large (not selfpropelled) hoisting or moving brick and concrete into, or into and on floor level, one or both; Crane, Climbing (such as Linden); Crane, Hydraulic - Rough Terrain, self-propelled; Crane, Hydraulic - Truck or Cruiser mounted - under 16 tons; Drilling machine - Self-powered, used for earth or rock drilling or boring (wagon drills and any hand drills obtaining power from other sources including concrete breakers, jackhammers and Barco equipment no engineer required); Elevating Grader; Engine Man, Dredge; Excavator or Powerbelt Machine; Finishing Machine, self-propelled oscillating screed; Forklift; Generators, Two through Six 30 KW or over; Grader, Road with power blade; Greaser; Highlift; Hoist, Concrete and Brick (Brick cages or concrete skips operating

or on tower, Towermobile, or similar equipment); Hoist, Three or more drums in use; Hoist, Stack; Hydro-Hammer; Lad-A-Vator, hoisting brick or concrete; Loading Machine such as Barber-Greene; Mechanic on job site

GROUP 2: Air Tugger with plant air; Boiler (for power or heating shell of building or temporary enclosures in connection with construction work); Boiler, Temporary; Compressor, One over 125 CFM; Compressor, truck mounted; Conveyor, Large (not self- propelled); Conveyor, Large (not self- propelled) moving brick and concrete (distributing) on floor level; Curb Finishing Machine; Ditch Paving Machine; Elevator (outside); Endless Chain Hoist; Fireman (as required); Form Grader; Hoist, One Drum regardless of size (except brick or concrete); Lad-A-Vator, other hoisting; Manlift; Mixer, Asphalt, over 8 cu ft capacity; Mixer, one bag capacity or less; Mixer, without side loader, two bag capacity or more; Mixer, with side loader, regardless of size, not Paver; Mud Jack (where mud jack is used in conjunction with an air compressor, operator shall be paid \$.55 per hour in addition to his basic hourly rate for covering both operations); Pug Mill operator; Pump, Sump - self powered, automatic controlled over 2"; Scissor Lift (used for hoisting); Skid Steer Loader; Sweeper, Street; Tractor, small wheel type 50 HP and under with grader blade and similar equipment; Welding Machine, One over 400 amp; Winch, operating from truck

GROUP 3: Boat operator - outboard motor, job site; Conveyors (such as Con-Vay-It) regardless of how used; Elevator (inside); Heater operator, 2 through 6; Sweeper, Floor

GROUP 4: Crane type

HOURLY PREMIUMS:

Backhoe, Hydraulic 2 cu yds or less without oiler - \$2.00;
Crane, climbing (such as Linden) - \$.50;
Crane, Pile Driving and Extracting - \$.50
Crane with boom (including job) over
100 ft from pin to pin - add \$.01 per foot
to maximum of \$4.00);
Crane, using rock socket tool - \$.50;
Derrick, diesel, gas or electric hoisting material
and erecting steel (150 ft or more above ground) - \$.50;
Dragline, 7 cu yds and over - \$.50;
Hoist, Three or more drums in use - \$.50;
Scoop, Tandem - \$.50;
Shovel, Power - 7 cu yds and over - \$.50;
Tractor, Tandem Crawler - \$.50;
Tunnel, man assigned to work in tunnel or
tunnel shaft - \$.50;
Wrecking, when machines are working on
second floor or higher - \$.50

ENGI0513-006 05/01/2025

ADAIR, AUDRAIN, BOLLINGER, BOONE, BUTLER, CALLAWAY, CAPE
GIRARDEAU, CARTER, CLARK, COLE, CRAWFORD, DENT, DUNKLIN,
GASCONADE, HOWELL, IRON, KNOX, LEWIS, MACON, MADISON, MARIES,
MARION, MILLER, MISSISSIPPI, MONITEAU, MONROE, MONTGOMERY,
MORGAN, NEW MADRID, OREGON, OSAGE, PEMISCOT, PERRY, PHELPS,
PIKE, PULASKI, PUTNAM, RALLS, RANDOLPH, REYNOLDS, RIPLEY, ST.
FRANCOIS, STE. GENEVIEVE, SCHUYLER, SCOTLAND, SCOTT, SHANNON,

SHELBY, STODDARD, TEXAS, WASHINGTON, AND WAYNE COUNTIES

	Rates	Fringes
Power equipment operators:		
GROUP 1.....	\$ 40.39	30.33
GROUP 2.....	\$ 40.04	30.33
GROUP 3.....	\$ 39.84	30.33
GROUP 4.....	\$ 36.19	30.33

POWER EQUIPMENT OPERATORS CLASSIFICATIONS

GROUP 1: Asphalt finishing machine & trench widening spreader, asphalt plant console operator; autograder; automatic slipform paver; back hoe; blade operator - all types; boat operator tow; boiler two; central mix concrete plant operator; clam shell operator; concrete mixer paver; crane operator; derrick or derrick trucks; ditching machine; dozer operator; dragline operator; dredge booster pump; dredge engineman; dredge operator; drill cat with compressor mounted on cat; drilling or boring machine rotary self-propelled; highloader; hoisting engine 2 active drums; launchhammer wheel; locomotive operator standrad guage; mechanics and welders; mucking machine; piledriver operator; pitman crane operator; push cat operator; quad-trac; scoop operator; sideboom cats; skimmer scoop operator; trenching machine operator; truck crane, shovel operator.

GROUP 2: A-Frame; asphalt hot-mix silo; asphalt roller operator asphalt plant fireman (drum or boiler); asphalt plant man; asphalt plant mixer operator; backfiller operator; barber-greene loader; boat operator (bridge & dams); chip spreader; concrete mixer operator skip loader; concrete plant operator; concrete pump operator; dredge oiler; elevating graded operator; fork lift; grease fleet; hoisting engine one; locomotive operator narrow guage; multiple compactor; pavement breaker; powerbroom self-propelled; power shield; rooter; slip-form finishing machine; stumpcutter machine; side discharge concrete spreader; throttlemann; tractor operator (over 50 hp); winch truck; asphalt roller operator; crusher operator.

GROUP 3: Spreader box operator, self-propelled not asphalt; tractor operator (50 h.p. or less); boilers one; chip spreader (front man); churn drill operator; compressor over 105 CFM 2-3 pumps 4" & over; 2-3 light plant 7.5 KWA or any combination thereof; clef plane operator; compressor maintenance operator 2 or 3; concrete saw operator (self-propelled); curb finishing mancine; distributor operator; finishing machine operator; flex plane operator; float operator; form grader operator; pugmill operator; riller operator other than high type asphalt; screening & washing plant operator; siphons & jets; subgrading machine operator; tank car heater (combination boiler & booster); ulmac, ulric or similar spreader; vibrating machine operator; hydrobroom.

GROUP 4: Oiler; grout machine; oiler driver; compressor over 105 CFM one; conveyor operator one; maintenance operator; pump 4" & over one.

FOOTNOTE: HOURLY PREMIUMS

Backhoe hydraulic, 2 cu. yds. or under Without oiler - \$2.00
 Certified Crane Operator - \$1.50;
 Certified Hazardous Material Operator \$1.50;
 Crane, climbing (such as Linden) - \$0.50;
 Crane, pile driving and extracting - \$0.50;
 Crane, with boom (including jib) over 100' from pin to pin
 add \$0.01 per foot to maximum of \$4.00;
 Crane, using rock socket tool - \$0.50;
 Derrick, diesel, gas or electric, hoisting material and
 erecting steel (150' or more above the ground) - \$0.50;
 Dragline, 7 cu. yds, and over - \$0.50;
 Hoist, three or more drums in use - \$0.50; Scoop, Tandem -
 \$0.50;
 Shovel, power - 7 cu. yds. or more - \$0.50;
 Tractor, tandem crawler - \$0.50;
 Tunnel, man assigned to work in tunnel or tunnel shaft -
 \$0.50;
 Wrecking, when machine is working on second floor or higher -
 \$0.50;

 ENGI0513-007 05/05/2025

ST. LOUIS CITY AND COUNTY

	Rates	Fringes
Power equipment operators:		
GROUP 1.....	\$ 45.96	30.96
GROUP 2.....	\$ 45.96	30.96
GROUP 3.....	\$ 44.66	30.96
GROUP 4.....	\$ 44.22	30.96

POWER EQUIPMENT OPERATORS CLASSIFICATIONS

GROUP 1: Backhoe, cable or hydraulic; cableway; crane crawler or truck; crane, hydraulic-truck or cruiser mounted 16 tons & over; crane locomotive; derrick, steam; derrick car & derrick boat; dragline; dredge; gradall, crawler or tire mounted; locomotive, gas, steam & other powers; pile driver, land or floating; scoop, skimmer; shovel, power (steam, gas, electric or other powers); switch boat; whirley.

GROUP 2: Air tugger w/air compressor; anchor-placing barge; asphalt spreader; atehy force feeder loader (self-propelled); backfilling machine; backhoe-loader; boat operator-push boat or tow boat (job site); boiler, high pressure breaking in period; boom truck, placing or erecting; boring machine, footing foundation; bull- float; cherry picker; combination concrete hoist & mixer (such as mixer mobile); compressor (when operator runs throttle); concrete breaker (truck or tractor mounted); concrete pump, such as pump-crete machine; concrete saw (self-propelled), concrete spreader; conveyor, large (not self-propelled), hoisting or moving brick and concrete into, or into and on floor level, one or both; crane, hydraulic-rough terrain, self-propelled; crane hydraulic-truck or cruiser mounted-under 16 tons; drilling machines, self-powered use for earth or rock drilling or boring (wagon drills nd any hand drills obtaining power from other sources including concrete breakers, jackhammers and barco equipment-no engineer required); elevating grader; engineman, dredge; excavator or powerbelt machine; finishing machine, self-propelled oscillating screed; forklift; grader, road

with power blade; highlift. greaser; hoist, stack, hydro-hammer; loading machine (such as barber-green); machanic, on job site; mixer, pipe wrapping machines; plant asphalt; plant, concrete producing or ready-mix job site; plant heating-job site; plant mixing-job site; plant power, generating-job site; pumps, two through six self-powered over 2"; pumps, electric submersible, two through six, over 4"; quad-track; roller, asphalt, top or sub-grade; scoop, tractor drawn; spreader box; sub-grader; tie tamper; tractor-crawler, or wheel type with or without power unit, power take-offs and attachments regardless of size; trenching machine; tunnel boring machine; vibrating machine automatic, automatic propelled; welding machines (gasoline or diesel) two through six; well drilling machine

GROUP 3: Conveyor, large (not self-propelled); conveyor, large (not self-propelled) moving brick and concrete distributing) on floor level; mixer two or more mixers of one bag capacity or less; air tugger w/plant air; boiler, for power or heating on construction projects; boiler, temporary; compressor (mounted on truck; curb finishing machine; ditch paving machine; elevator; endless chain hoist; form grader; hoist, one drum regardless of size; lad-a-vator; manlift; mixer, asphalt, over 8 cu. ft. capacity, without side loader, 2 bag capacity or more; mixer, with side loader, regardless of size; pug mill operator; pump, sump-self-powered, automatic controlled over 2" during use in connection with construction work; sweeper, street; welding machine, one over 400 amp.; winch operating from truck; scissor lift (used for hoisting); tractor, small wheel type 50 h.p. & under with grader blade & similar equipment; Oiler on dredge and on truck crane.

GROUP 4: Boat operator-outboard motor (job site); conveyor (such as con-vay-it) regardless of how used; sweeper, floor

HOURLY PREMIUMS:

Backhoe, hydraulic	
2 cu. yds. or under without oiler	\$2.00
Certified Crane Operator	1.50
Certified Hazardous Material Operator	1.50
Crane, climbing (such as Linden)	.50
Crane, pile driving and extracting	.50
Crane, with boom (including jib) over 100' (from pin to pin) add \$.01 per foot to maximum of	4.00
Crane, using rock socket tool	.50
Derrick, diesel, gas or electric, hoisting material and erecting steel (150' or more above ground)	.50
Dragline, 7 cu. yds. and over	.50
Hoist, three (3) or more drums in use	.50
Scoop, Tandem	.50
Shovel, power - 7 cu. yds. or more	.50
Tractor, tandem crawler	.50
Tunnel, man assigned to work in tunnel or tunnel shaft	.50
Wrecking, when machine is working on second floor or higher	.50

IRON0010-012 04/01/2025

Rates

Fringes

Ironworkers:

ANDREW, BARTON, BENTON,
 CAMDEN, CEDAR, CHARITON,
 CHRISTIAN, COOPER, DADE,
 DALLAS, DAVIESS, DE KALB,
 GENTRY, GREENE, GRUNDY,
 HARRISON, HICKORY, HOLT,
 HOWARD, LACLEDE, LINN,
 LIVINGSTON, MERCER,
 MONITEAU, MORGAN, NODAWAY,
 PETTIS, POLK, PUTNAM,
 RANDLOPH, ST. CLAIR,
 SULLIVAN, TANEY, VERNON,
 WEBSTER, WRIGHT and WORTH
 Counties and portions of
 ADAIR, BOONE, MACON,
 MILLER and RANDOLPH

Counties.....\$ 36.00 34.25

ATCHISON, BATES, BUCHANAN,
 CALDWELL, CARROLL, CASS,
 CLAY, CLINTON, HENRY,
 JACKSON, JOHNSON,
 LAFAYETTE, PETTIS, PLATTE,
 SALINE, AND RAY COUNTIES....\$ 39.00 34.25

 IRON0010-020 04/01/2025

BARRY, JASPER, LAWRENCE, MCDONALD, NEWTON AND STONE Counties

Rates Fringes

Ironworkers:.....\$ 36.00 34.25

 IRON0321-002 08/01/2023

DOUGLAS, HOWELL and OZARK COUNTIES

Rates Fringes

Ironworker.....\$ 27.00 20.96

 IRON0396-004 08/06/2025

ST. LOUIS (City and County), ST. CHARLES, JEFFERSON, IRON,
 FRANKLIN, LINCOLN, WARREN, WASHINGTON, ST. FRANCOIS, STE.
 GENEVIEVE, and REYNOLDS Counties; and portions of MADISON,
 PERRY, BOLLINGER, WAYNE, and CARTER Counties

Rates Fringes

Ironworker.....\$ 44.27 31.65

 IRON0396-009 08/07/2024

AUDRAIN, CALLAWAY, COLE, CRAWFORD, DENT, GASCONADE, MARIES,
 MONTGOMERY, OSAGE, PHELPS, PIKE, PULASKI, TEXAS and WRIGHT
 Counties; and portions of BOONE, CAMDEN, DOUGLAS, HOWELL,
 LACLEDE, MILLER, MONROE, OREGON, SHANNON and RALLS Counties

Rates Fringes

Ironworker.....\$ 41.67 31.25

IRON0577-005 06/01/2024

ADAIR, CLARK, KNOX, LEWIS, MACON, MARION, MONROE, RALLS,
SCHUYLER, SCOTLAND, AND SHELBY COUNTIES

	Rates	Fringes
Ironworker.....	\$ 34.05	25.30

IRON0782-003 08/01/2023

CAPE GIRARDEAU, MISSISSIPPI, NEW MADRID, SCOTT, & STODDARD
Counties; and portions of BOLLINGER, BUTLER, CARTER, DUNKLIN,
MADISON, PEMISCOT, PERRY, RIPLEY, and WAYNE Counties

	Rates	Fringes
Ironworkers: Locks, Dams, Bridges and other major work on the Mississippi and Ohio River only.....	\$ 38.77	29.51
All Other Work.....	\$ 33.47	24.12

LAB00042-003 06/04/2025

ST. LOUIS (City and County)

	Rates	Fringes
LABORER Plumber Laborer.....	\$ 40.82	17.56

LAB00042-005 06/04/2025

ST. LOUIS (City and County)

	Rates	Fringes
LABORER Dynamiter, Powderman.....	\$ 40.82	17.56
Laborers, Flaggers.....	\$ 40.82	17.56
Wrecking.....	\$ 40.82	17.56

LAB00110-005 05/01/2025

Jefferson and Washington Counties

	Rates	Fringes
LABORER (Jefferson County) GROUP 1.....	\$ 40.36	15.96
GROUP 2.....	\$ 40.36	15.96
LABORER (Washington County) GROUP 1.....	\$ 37.25	15.96
GROUP 2.....	\$ 37.25	15.96

LABORERS CLASSIFICATIONS

GROUP 1 - General laborer-flagman, carpenter tenders;
salamander Tenders; Dump Man; Ticket Takers; loading trucks
under bins, hoppers, and conveyors; track man; cement
handler; dump man on earth fill; georgie buggy man;

material batch hopper man; spreader on asphalt machine; material mixer man (except on manholes); coffer dams; riprap pavers rock, block or brick; scaffolds over ten feet not self-supported from ground up; skip man on concrete paving; wire mesh setters on concrete paving; all work in connection with sewer, water, gas, gasoling, oil, drainage pipe, conduit pipe, tile and duct lines and all other pipe lines; power tool operator; all work in connection with hydraulic or general dredging operations; form setters, puddlers (paving only); straw blower nozzle man; asphalt plant platform man; chuck tender; crusher feeder; men handling creosote ties or creosote materials; men working with and handling epoxy material; topper of standing trees; feeder man on wood pulverizers, board and willow mat weavers and cable ties on river work; deck hands; pile dike and revetment work; all laborers working on underground tunnels less than 25 ft. where compressed air is not used; abutment and pier hole men working six (6) ft. or more below ground; men working in coffer dams for bridge piers and footing in the river; barco tamper; jackson or any other similar tamp; cutting torch man; liners, curb, gutters, ditch lines; hot mastic kettlemen; hot tar applicator; hand blade operator; mortar men or brick or block manholes; rubbing concrete, air tool operator under 65 lbs.; caulker and lead man; chain or concrete saw under 15 h.p.; signal Gan; Guard rail and sign erectors.

GROUP 2 - Skilled laborers - Vibrator man; asphalt raker; head pipe layer on sewer work; batterboard man on pipe and ditch work; cliff scalers working from bosun's chairs; scaffolds or platforms on dams or power plants over 10 ft. high; air tool operator over 65 lbs.; stringline man on concrete paving; sandblast man; laser beam man; wagon drill; churn drill; air track drill and all other similar type drills, gunite nozzle man; pressure grout man; screed man on asphalt; concrete saw 15 h.p. and over; grade checker; stringline man on electronic grade control; manhole builder; dynamite man; powder man; welder; tunnel man; waterblaster - 1000 psi or over; asbestos and/or hazardous waste removal and/or disposal

LAB00579-005 05/01/2023

	Rates	Fringes
--	-------	---------

LABORER (ANDREW, ATCHISON,
BUCHANAN, CALDWELL, CLINTON,
DAVIESS, DEKALB, GENTRY,
GRUNDY, HARRISON, HOLT,
LIVINGSTON, MERCER, NODAWAY
and WORTH COUNTIES.)

GROUP 1.....	\$ 29.04	16.59
GROUP 2.....	\$ 29.39	16.59

LABORER (BARRY, BARTON,
BATES, BENTON, CAMDEN,
CARROLL, CEDAR, CHRISTIAN,
DADE, DALLAS, DOUGLAS,
GREENE, HENRY, HICKORY,
JASPER, JOHNSON, LACLEDE,
LAWRENCE, MCDONALD, MORGAN,
NEWTON, OZARK, PETTIS, POLK,
ST. CLAIR, SALINE, STONE,
TANEY, VERNON, WEBSTER and

WRIGHT COUNTIES)

GROUP 1.....	\$ 28.23	15.60
GROUP 2.....	\$ 28.78	15.60

LABORER (LAFAYETTE COUNTY)

GROUP 1.....	\$ 29.78	15.85
GROUP 2.....	\$ 30.13	15.85

LABORERS CLASSIFICATIONS

GROUP 1: General Laborers - Carpenter tenders; salamander tenders; loading trucks under bins; hoppers & conveyors; track men & all other general laborers; air tool operator; cement handler-bulk or sack; dump man on earth fill; georgie buggy man; material batch hopper man; material mixer man (except on manholes); coffer dams; riprap pavers - rock, block or brick; signal man; scaffolds over ten feet not self-supported from ground up; skipman on concrete paving; wire mesh setters on concrete paving; all work in connection with sewer, water, gas, gasoline, oil drainage pipe, conduit pipe, tile and duct lines and all other pipe lines; power tool operator, all work in connection with hydraulic or general dredging operations; puddlers (paving only); straw blower nozzle man; asphalt plant platform man; chuck tender; crusher feeder; men handling creosote ties or creosote materials; men working with and handling epoxy material or materials (where special protection is required); rubbing concrete; topper of standing trees; batter board man on pipe and ditch work; feeder man on wood pulverizers; board and willow mat weavers and cable tiers on river work; deck hands; pile dike and revetment work; all laborers working on underground tunnels less than 25 feet where compressed air is not used; abutment and pier hole men working six (6) feet or more below ground; men working in coffer dams for bridge piers and footings in the river; ditchliners; pressure groutmen; caulker; chain or concrete saw; cliffscalers working from scaffolds, bosuns' chairs or platforms on dams or power plants over (10) feet above ground; mortarmen on brick or block manholes; toxic and hazardous waste work.

GROUP 2: Skilled Laborers - Head pipe layer on sewer work; laser beam man; Jackson or any other similar tamp; cutting torch man; form setters; liners and stringline men on concrete paving, curb, gutters; hot mastic kettleman; hot tar applicator; sandblasting and gunite nozzle men; air tool operator in tunnels; screed man on asphalt machine; asphalt raker; barco tamper; churn drills; air track drills and all similar drills; vibrator man; stringline man for electronic grade control; manhole builders-brick or block; dynamite and powder men; grade checker.

LAB00660-004 05/01/2025

Clark, Knox, Lewis, Marion, Pike, Ralls, Scotland, Shelby Counties

	Rates	Fringes
--	-------	---------

LABORER

GROUP 1.....	\$ 37.25	15.96
GROUP 2.....	\$ 37.25	15.96

LABORERS CLASSIFICATIONS

GROUP 1 - General laborer-flagman, carpenter tenders; salamander Tenders; Dump Man; Ticket Takers; loading trucks under bins, hoppers, and conveyors; track man; cement handler; dump man on earth fill; georgie buggy man; material batch hopper man; spreader on asphalt machine; material mixer man (except on manholes); coffer dams; riprap pavers rock, block or brick; scaffolds over ten feet not self-supported from ground up; skip man on concrete paving; wire mesh setters on concrete paving; all work in connection with sewer, water, gas, gasoling, oil, drainage pipe, conduit pipe, tile and duct lines and all other pipe lines; power tool operator; all work in connection with hydraulic or general dredging operations; form setters, puddlers (paving only); straw blower nozzle man; asphalt plant platform man; chuck tender; crusher feeder; men handling creosote ties or creosote materials; men working with and handling epoxy material; toppler of standing trees; feeder man on wood pulverizers, board and willow mat weavers and cable tiers on river work; deck hands; pile dike and revetment work; all laborers working on underground tunnels less than 25 ft. where compressed air is not used; abutment and pier hole men working six (6) ft. or more below ground; men working in coffer dams for bridge piers and footing in the river; barco tamper; jackson or any other similar tamp; cutting torch man; liners, curb, gutters, ditch lines; hot mastic kettlemen; hot tar applicator; hand blade operator; mortar men or brick or block manholes; rubbing concrete, air tool operator under 65 lbs.; caulker and lead man; chain or concrete saw under 15 h.p.; signal Gan; Guard rail and sign erectors.

GROUP 2 - Skilled laborers - Vibrator man; asphalt raker; head pipe layer on sewer work; batterboard man on pipe and ditch work; cliff scalers working from bosun's chairs; scaffolds or platforms on dams or power plants over 10 ft. high; air tool operator over 65 lbs.; stringline man on concrete paving; sandblast man; laser beam man; wagon drill; churn drill; air track drill and all other similar type drills, gunite nozzle man; pressure grout man; screed man on asphalt; concrete saw 15 h.p. and over; grade checker; stringline man on electronic grade control; manhole builder; dynamite man; powder man; welder; tunnel man; waterblaster - 1000 psi or over; asbestos and/or hazardous waste removal and/or disposal

LAB00660-006 06/02/2025

Lincoln, Montgomery, St Charles and Warren Counties

	Rates	Fringes
LABORER (Common or General).....	\$ 36.91	15.62
Lincoln, Monntomery, and		
Warrner Counties.....	\$ 39.76	15.96
St. Charles County.....	\$ 41.18	15.96

LAB00662-001 05/01/2025

Callaway, Cole, Miller and Moniteau Counties

Rates	Fringes
-------	---------

LABORER

GROUP 1.....	\$ 37.25	15.96
GROUP 2.....	\$ 37.25	15.96

LABORERS CLASSIFICATIONS

GROUP 1 - General laborer-flagman, carpenter tenders; salamander Tenders; Dump Man; Ticket Takers; loading trucks under bins, hoppers, and conveyors; track man; cement handler; dump man on earth fill; georgie buggy man; material batch hopper man; spreader on asphalt machine; material mixer man (except on manholes); coffer dams; riprap pavers rock, block or brick; scaffolds over ten feet not self-supported from ground up; skip man on concrete paving; wire mesh setters on concrete paving; all work in connection with sewer, water, gas, gasoling, oil, drainage pipe, conduit pipe, tile and duct lines and all other pipe lines; power tool operator; all work in connection with hydraulic or general dredging operations; form setters, puddlers (paving only); straw blower nozzle man; asphalt plant platform man; chuck tender; crusher feeder; men handling creosote ties or creosote materials; men working with and handling epoxy material; topper of standing trees; feeder man on wood pulverizers, board and willow mat weavers and cabelee tiers on river work; deck hands; pile dike and revetment work; all laborers working on underground tunnels less than 25 ft. where compressed air is not used; abutment and pier hole men working six (6) ft. or more below ground; men working in coffer dams for bridge piers and footing in the river; barco tamper; jackson or any other similar tamp; cutting torch man; liners, curb, gutters, ditch lines; hot mastic kettlemen; hot tar applicator; hand blade operator; mortar men or brick or block manholes; rubbing concrete, air tool operator under 65 lbs.; caulker and lead man; chain or concrete saw under 15 h.p.; signal Gan; Guard rail and sign erectors.

GROUP 2 - Skilled laborers - Vibrator man; asphalt raker; head pipe layer on sewer work; batterboard man on pipe and ditch work; cliff scalers working from bosun's chairs; scaffolds or platforms on dams or power plants over 10 ft. high; air tool operator over 65 lbs.; stringline man on concrete paving; sandblast man; laser beam man; wagon drill; churn drill; air track drill and all other similar type drills, gunite nozzle man; pressure grout man; screed man on asphalt; concrete saw 15 h.p. and over; grade checker; strigline man on electronic grade control; manhole builder; dynamite man; powder man; welder; tunnel man; waterblaster - 1000 psi or over; asbestos and/or hazardous waste removal and/or disposal

LAB00663-002 04/01/2025

CASS, CLAY, JACKSON, PLATTE AND RAY COUNTIES

	Rates	Fringes
--	-------	---------

LABORER

GROUP 1.....	\$ 36.24	15.87
GROUP 2.....	\$ 37.45	15.87

LABORERS CLASSIFICATIONS

GROUP 1: General laborers, Carpenter tenders, salamander tenders, loading trucks under bins, hoppers and conveyors, track men and all other general laborers, air tool operator, cement handler (bulk or sack), chain or concrete saw, deck hands, dump man on earth fill, Georgie Buggies man, material batch hopper man, scale man, material mixer man (except on manholes), coffer dams, abutments and pier hole men working below ground, riprap pavers rock, black or brick, signal man, scaffolds over ten feet not self-supported from ground up, skipman on concrete paving, wire mesh setters on concrete paving, all work in connection with sewer, water, gas, gasoling, oil, drainage pipe, conduit pipe, tile and duct lines and all other pipelines, power tool operator, all work in connection with hydraulic or general dredging operations, straw blower nozzle man, asphalt plant platform man, chuck tender, crusher feeder, men handling creosote ties on creosote materials, men working with and handling epoxy material or materials (where special protection is required), topper of standing trees, batter board man on pipe and ditch work, feeder man on wood pulverizers, board and willow mat weavers and cable tiers on river work, deck hands, pile dike and revetment work, all laborers working on underground tunnels less than 25 feet where compressed air is not used, abutment and pier hole men working six (6) feet or more below ground, men working in coffer dams for bridge piers and footings in the river, ditchliners, pressure groutmen, caulker and chain or concrete saw, cliffscalers working from scaffolds, bosuns' chairs or platforms on dams or power plants over (10) feet above ground, mortarmen on brick or block manholes, signal man.

GROUP 2: Skilled Laborer - spreader or screed man on asphalt machine, asphalt raker, grade checker, vibrator man, concrete saw over 5 hp., laser beam man, barco tamper, jackson or any other similar tamp, wagon driller, churn drills, air track drills and other similar drills, cutting torch man, form setters, liners and stringline men on concrete paving, curb, gutters and etc., hot mastic kettleman, hot tar applicator, hand blade operators, mortar men on brick or block manholes, sand blasting and gunnite nozzle men, rubbing concrete, air tool operator in tunnels, head pipe layer on sewer work, manhole builder (brick or block), dynamite and powder men.

LAB00840-011 05/01/2025

Crawford, Dent, Franklin, Gasconade, Howell, Maries, Oregon, Osage, Phelps, Pulaski, Shannon and Texas Counties

	Rates	Fringes
LABORER (Crawford, Dent, Gasconade, Howell, Maries, Oregon, Osage, Phelps, Pulaski, Shannon and Texas Counties)		
GROUP 1.....	\$ 37.25	15.96
GROUP 2.....	\$ 37.25	15.96
LABORER (Franklin County)		
GROUP 1.....	\$ 40.31	15.96
GROUP 2.....	\$ 40.31	15.96

LABORERS CLASSIFICATIONS

GROUP 1 - General laborer-flagman, carpenter tenders; salamander Tenders; Dump Man; Ticket Takers; loading trucks under bins, hoppers, and conveyors; track man; cement handler; dump man on earth fill; georgie buggy man; material batch hopper man; spreader on asphalt machine; material mixer man (except on manholes); coffer dams; riprap pavers rock, block or brick; scaffolds over ten feet not self-supported from ground up; skip man on concrete paving; wire mesh setters on concrete paving; all work in connection with sewer, water, gas, gasoling, oil, drainage pipe, conduit pipe, tile and duct lines and all other pipe lines; power tool operator; all work in connection with hydraulic or general dredging operations; form setters, puddlers (paving only); straw blower nozzle man; asphalt plant platform man; chuck tender; crusher feeder; men handling creosote ties or creosote materials; men working with and handling epoxy material; topper of standing trees; feeder man on wood pulverizers, board and willow mat weavers and cabelee tiers on river work; deck hands; pile dike and revetment work; all laborers working on underground tunnels less than 25 ft. where compressed air is not used; abutement and pier hole men working six (6) ft. or more below ground; men working in coffer dams for bridge piers and footing in the river; barco tamper; jackson or any other similar tamp; cutting torch man; liners, curb, gutters, ditch lines; hot mastic kettlemen; hot tar applicator; hand blade operator; mortar men or brick or block manholes; rubbing concrete, air tool operator under 65 lbs.; caulker and lead man; chain or concrete saw under 15 h.p.; signal Gan; Guard rail and sign erectors.

GROUP 2 - Skilled laborers - Vibrator man; asphalt raker; head pipe layer on sewer work; batterboard man on pipe and ditch work; cliff scalers working from bosun's chairs; scaffolds or platforms on dams or power plants over 10 ft. high; air tool operator over 65 lbs.; stringline man on concrete paving; sandblast man; laser beam man; wagon drill; churn drill; air track drill and all other similar type drills, gunite nozzle man; pressure grout man; screed man on asphalt; concrete saw 15 h.p. and over; grade checker; strigline man on electronic grade control; manhole builder; dynamite man; powder man; welder; tunnel man; waterblaster - 1000 psi or over; asbestos and/or hazardous waste removal and/or disposal

LAB00955-012 05/01/2025

Adair, Audrain, Boone, Chariton, Cooper, Howard, Linn, Macon, Monroe, Putnam, Randolph, Schuyler and Sullivan Counties

	Rates	Fringes
LABORER		
GROUP 1.....	\$ 37.25	15.96
GROUP 2.....	\$ 37.25	15.96

LABORERS CLASSIFICATIONS

GROUP 1 - General laborer-flagman, carpenter tenders; salamander Tenders; Dump Man; Ticket Takers; loading trucks

under bins, hoppers, and conveyors; track man; cement handler; dump man on earth fill; georgie buggy man; material batch hopper man; spreader on asphalt machine; material mixer man (except on manholes); coffer dams; riprap pavers rock, block or brick; scaffolds over ten feet not self-supported from ground up; skip man on concrete paving; wire mesh setters on concrete paving; all work in connection with sewer, water, gas, gasoling, oil, drainage pipe, conduit pipe, tile and duct lines and all other pipe lines; power tool operator; all work in connection with hydraulic or general dredging operations; form setters, puddlers (paving only); straw blower nozzle man; asphalt plant platform man; chuck tender; crusher feeder; men handling creosote ties or creosote materials; men working with and handling epoxy material; toppler of standing trees; feeder man on wood pulverizers, board and willow mat weavers and cable ties on river work; deck hands; pile dike and revetment work; all laborers working on underground tunnels less than 25 ft. where compressed air is not used; abutment and pier hole men working six (6) ft. or more below ground; men working in coffer dams for bridge piers and footing in the river; barco tamper; jackson or any other similar tamp; cutting torch man; liners, curb, gutters, ditch lines; hot mastic kettlemen; hot tar applicator; hand blade operator; mortar men or brick or block manholes; rubbing concrete, air tool operator under 65 lbs.; caulker and lead man; chain or concrete saw under 15 h.p.; signal Gan; Guard rail and sign erectors.

GROUP 2 - Skilled laborers - Vibrator man; asphalt raker; head pipe layer on sewer work; batterboard man on pipe and ditch work; cliff scalers working from bosun's chairs; scaffolds or platforms on dams or power plants over 10 ft. high; air tool operator over 65 lbs.; stringline man on concrete paving; sandblast man; laser beam man; wagon drill; churn drill; air track drill and all other similar type drills, gunite nozzle man; pressure grout man; screed man on asphalt; concrete saw 15 h.p. and over; grade checker; strigline man on electronic grade control; manhole builder; dynamite man; powder man; welder; tunnel man; waterblaster - 1000 psi or over; asbestos and/or hazardous waste removal and/or disposal

LAB01104-005 05/01/2025

Bollinger, Butler, Cape Girardeau, Carter, Dunklin, Iron, Madison, Mississippi, New Madrid, Pemiscot, Perry, Reynolds, Ripley, Scott, St Francois, Ste Genevieve, Stoddard and Wayne Counties

	Rates	Fringes
LABORER		
GROUP 1.....	\$ 37.25	15.96
GROUP 2.....	\$ 37.25	15.96

LABORERS CLASSIFICATIONS

GROUP 1 - General laborer-flagman, carpenter tenders; salamander Tenders; Dump Man; Ticket Takers; loading trucks under bins, hoppers, and conveyors; track man; cement handler; dump man on earth fill; georgie buggy man;

material batch hopper man; spreader on asphalt machine; material mixer man (except on manholes); coffer dams; riprap pavers rock, block or brick; scaffolds over ten feet not self-supported from ground up; skip man on concrete paving; wire mesh setters on concrete paving; all work in connection with sewer, water, gas, gasoling, oil, drainage pipe, conduit pipe, tile and duct lines and all other pipe lines; power tool operator; all work in connection with hydraulic or general dredging operations; form setters, puddlers (paving only); straw blower nozzle man; asphalt plant platform man; chuck tender; crusher feeder; men handling creosote ties or creosote materials; men working with and handling epoxy material; topper of standing trees; feeder man on wood pulverizers, board and willow mat weavers and cable ties on river work; deck hands; pile dike and revetment work; all laborers working on underground tunnels less than 25 ft. where compressed air is not used; abutment and pier hole men working six (6) ft. or more below ground; men working in coffer dams for bridge piers and footing in the river; barco tamper; jackson or any other similar tamp; cutting torch man; liners, curb, gutters, ditch lines; hot mastic kettlemen; hot tar applicator; hand blade operator; mortar men or brick or block manholes; rubbing concrete, air tool operator under 65 lbs.; caulker and lead man; chain or concrete saw under 15 h.p.; signal Gan; Guard rail and sign erectors.

GROUP 2 - Skilled laborers - Vibrator man; asphalt raker; head pipe layer on sewer work; batterboard man on pipe and ditch work; cliff scalers working from bosun's chairs; scaffolds or platforms on dams or power plants over 10 ft. high; air tool operator over 65 lbs.; stringline man on concrete paving; sandblast man; laser beam man; wagon drill; churn drill; air track drill and all other similar type drills, gunite nozzle man; pressure grout man; screed man on asphalt; concrete saw 15 h.p. and over; grade checker; stringline man on electronic grade control; manhole builder; dynamite man; powder man; welder; tunnel man; waterblaster - 1000 psi or over; asbestos and/or hazardous waste removal and/or disposal

PAIN0002-002 09/01/2007

CLARK, FRANKLIN, JEFFERSON, LEWIS, LINCOLN, MARION, PIKE, RALLS, ST. CHARLES, ST. LOUIS (CITY & COUNTY), AND WARREN COUNTIES

	Rates	Fringes
Painters:		
Brush and Roller; Taper.....	\$ 28.61	10.24
High work over 60 feet.....	\$ 29.11	10.24
Lead Abatement.....	\$ 29.36	10.24
Pressure Roller; High work under 60 ft.....	\$ 28.86	10.24
Spray & Abrasive Blasting; Water Blasting (Over 5000 PSI).....	\$ 30.61	10.24
Taper (Ames Tools & Bazooka).....	\$ 30.21	10.24

PAIN0002-006 04/01/2023

ADAIR, AUDRAIN, BOONE, CALLAWAY, CHARITON, COLE, GASCONADE,
HOWARD, KNOX, LINN, MACON, MONROE, MONTGOMERY, OSAGE, PUTNAM,
RANDOLPH, SCHUYLER, SCOTLAND, SHELBY AND SULLIVAN COUNTIES and
the City of Booneville.

	Rates	Fringes
Painters:		
Bridges, Dams, Locks or Powerhouses.....	\$ 28.49	15.03
Brush and Roll; Taping, Paperhanging.....	\$ 26.49	15.03
Epoxy or Any Two Part Coating; Sandblasting; Stage or other Aerial Work - Platforms over 50 feet high; Lead Abatement.....	\$ 27.49	15.03
Spray; Structural Steel (over 50 feet).....	\$ 27.49	15.03
Tapers using Ames or Comparable Tools.....	\$ 27.24	15.03

PAIN0003-004 04/01/2019

CASS, CLAY, CLINTON, JACKSON, JOHNSON, LAFAYETTE, PLATTE & RAY
COUNTIES

	Rates	Fringes
Painters:		
Bridgeman; Lead Abatement; Sandblast; Storage Bin & Tanks.....	\$ 33.41	17.76
Brush & Roller.....	\$ 30.54	17.76
Drywall.....	\$ 31.74	17.76
Paper Hanger.....	\$ 31.04	17.76
Stageman; Beltman; Steelman; Elevator Shaft; Bazooka, Boxes and Power Sander; Sprayman; Dipping...	\$ 32.41	17.76
Steeplejack.....	\$ 36.98	17.76

PAIN0003-011 04/01/2019

BATES, BENTON, CALDWELL, CARROLL, COOPER, DAVIESS, GRUNDY,
HARRISON, HENRY, LIVINGSTON, MERCER, MONITEAU, MORGAN, PETTIS &
SALINE COUNTIES

	Rates	Fringes
Painters:		
Bridgeman; Lead Abatement; Sandblast; Storage Bin & Tanks.....	\$ 26.73	17.76
Brush & Roller.....	\$ 24.43	17.76
Drywall.....	\$ 25.39	17.76
Paper Hanger.....	\$ 24.83	17.76
Stageman; Beltman; Steelman; Elevator Shaft; Bazooka, Boxes and Power Sander; Sprayman; Dipping...	\$ 26.35	17.76

Steeplejack.....\$ 29.58 17.76

PAIN1185-008 04/01/2025

CAMDEN, CRAWFORD, DENT, LACLEDE, MARIES, MILLER, PHELPS,
PULASKI AND TEXAS COUNTIES

	Rates	Fringes
--	-------	---------

Painters:

Brush and Roller.....	\$ 33.90	17.21
Floor Work.....	\$ 34.90	17.21
Lead Abatement.....	\$ 33.25	17.21
Spray.....	\$ 34.90	17.21
Structural Steel, Sandblasting and All Tank Work.....	\$ 35.90	17.21
Taping, Paperhanging.....	\$ 34.90	17.21

PAIN1292-002 09/01/2024

BOLLINGER, BUTLER, CAPE GIRARDEAU, CARTER, DUNKLIN,
MISSISSIPPI, NEW MADRID, OREGON, PEMISCOT, PERRY, REYNOLDS,
RIPLEY, SCOTT, SHANNON, STODDARD and WAYNE COUNTIES

	Rates	Fringes
--	-------	---------

Painters:

Bridges, Stacks & Tanks.....	\$ 35.30	17.65
Brush & Roller.....	\$ 29.80	17.65
Spray & Abrasive Blasting; Waterblasting (over 5000 PSI).....	\$ 31.80	17.65

Height Rates (All Areas):

Over 60 ft. \$0.50 per hour.

Under 60 ft. \$0.25 per hour.

PAIN1292-003 09/01/2024

IRON, MADISON, ST. FRANCOIS, STE. GENEVIEVE and WASHINGTON
COUNTIES

	Rates	Fringes
--	-------	---------

Painters:

Bridges, Stacks & Tanks.....	\$ 35.30	17.65
Brush & Roller.....	\$ 30.95	17.65
Spray & Abrasive Blasting; Waterblasting (Over 5000 PSI).....	\$ 32.95	17.65

Height Rates (All Areas):

Over 60 ft. \$0.50 per hour

Under 60 ft. \$0.25 per hour.

PAIN2012-001 04/01/2025

ANDREW, ATCHISON, BUCHANAN, DE KALB, GENTRY, HOLT, NODAWAY &
WORTH COUNTIES

	Rates	Fringes
--	-------	---------

Painters:

Brush & Roller.....	\$ 36.18	19.97
Sandblaster.....	\$ 40.76	19.97
Steeplejack.....	\$ 44.33	19.97

 PAIN2015-001 04/01/2012

BARRY, BARTON, CEDAR, CHRISTIAN, DADE, DALLAS, DOUGLAS, GREENE,
 HICKORY, HOWELL, JASPER, LAWRENCE, MCDONALD, NEWTON, OZARK,
 POLK, ST. CLAIR, STONE, TANEY, VERNON, WEBSTER, and WRIGHT
 COUNTIES

	Rates	Fringes
--	-------	---------

Painters:

Finisher.....	\$ 20.18	11.33
Painter.....	\$ 19.75	11.76
Sandblaster, High Man, Spray Man, Vinyl Hanger, Tool Operator.....	\$ 21.18	11.33

 PLAS0518-006 03/01/2025

BARRY, BARTON, CEDAR, CHRISTIAN, DADE, DALLAS, DOUGLAS, GREENE,
 HICKORY, JASPER, LACLEDE, LAWRENCE, MCDONALD, NEWTON, OZARK,
 POLK, ST. CLAIR, STONE, TANEY, VERNON, WEBSTER, AND WRIGHT
 COUNTIES

	Rates	Fringes
--	-------	---------

CEMENT MASON/CONCRETE FINISHER...	\$ 30.37	12.43
-----------------------------------	----------	-------

 PLAS0518-007 04/01/2025

CASS (Richards-Gebaur AFB only), CLAY, JACKSON, PLATTE AND RAY
 COUNTIES

	Rates	Fringes
--	-------	---------

Cement Masons:.....	\$ 39.06	18.71
---------------------	----------	-------

 PLAS0518-011 04/01/2025

ANDREW, ATCHISON, BATES, BUCHANNAN, CLINTON, DEKALB, GENTRY,
 HENRY, HOLT, JOHNSON, LAFAYETTE, NODAWAY & WORTH COUNTIES

	Rates	Fringes
--	-------	---------

CEMENT MASON/CONCRETE FINISHER...	\$ 40.13	20.50
-----------------------------------	----------	-------

 PLAS0518-019 03/01/2025

Adair, Audrain, Benton, Boone, Callaway, Caldwell, Camden,
 Carroll, Chariton, Cole, Cooper, Daviess, Gasconade, Grundy,
 Harrison, Howard, Linn, Livingston, Macon, Maries, Mercer,
 Miller, Moniteau, Monroe, Montgomery, Morgan, Osage, Pettis,
 Putnam, Randolph, Saline, Schuyler, Shelby and Sullivan Counties

	Rates	Fringes
CEMENT MASON/CONCRETE FINISHER...	\$ 33.52	15.88

PLAS0527-001 04/01/2023		

	Rates	Fringes
CEMENT MASON		
FRANKLIN, LINCOLN AND		
WARREN COUNTIES.....	\$ 37.29	20.23
JEFFERSON, ST. CHARLES		
COUNTIES AND ST. LOUIS		
(City and County).....	\$ 38.46	20.13

PLAS0527-004 06/01/2023		

CRAWFORD, DENT, IRON, MADISON, MARION, PHELPS, PIKE, PULASKI,
RALLS, REYNOLDS, ST. FRANCOIS, STE. GENEVIEVE, SHANNON, TEXAS,
WASHINGTON COUNTIES

	Rates	Fringes
CEMENT MASON.....	\$ 32.00	19.72

PLAS0908-001 05/01/2025		

BOLLINGER, BUTLER, CAPE GIRARDEAU, CARTER, DUNKLIN, HOWELL,
MISSISSIPPI, NEW MADRID, OREGON, PEMISCOT, PERRY, RIPLEY,
SCOTT, STODDARD, AND WAYNE COUNTIES

	Rates	Fringes
CEMENT MASON.....	\$ 35.10	18.78

PLUM0008-003 06/01/2024		

CASS, CLAY, JACKSON, JOHNSON, AND PLATTE COUNTIES

	Rates	Fringes
Plumbers.....	\$ 56.63	24.54

PLUM0008-017 06/01/2024		

BATES, BENTON, CARROLL, HENRY, LAFAYETTE, MORGAN, PETTIS, RAY,
ST. CLAIR, SALINE AND VERNON COUNTIES

	Rates	Fringes
Plumbers.....	\$ 56.63	24.54

PLUM0045-003 08/01/2024		

ANDREW, ATCHISON, BUCHANAN, CALDWELL, CLINTON, DAVIESS, DEKALB,
GENTRY, HARRISON, HOLT, NODAWAY AND WORTH COUNTIES

	Rates	Fringes
--	-------	---------

Plumbers and Pipefitters.....\$ 47.45 26.15

PLUM0178-003 11/01/2024

BARRY, CEDAR, CHRISTIAN, DADE, DALLAS, DOUGLAS, GREENE,
HICKORY, LACLEDE, LAWRENCE, POLK, STONE, TANEY, WEBSTER AND
WRIGHT COUNTIES

Rates Fringes

Plumbers and Pipefitters.....\$ 39.35 15.72

PLUM0178-006 11/01/2022

BARTON, JASPER, MCDONALD AND NEWTON COUNTIES

Rates Fringes

Plumbers and Pipefitters

Projects \$750,000 & under...\$ 32.78 15.32

Projects over \$750,000.....\$ 35.75 15.32

PLUM0533-004 06/01/2024

BATES, BENTON, CARROLL, CASS, CLAY, HENRY, HICKORY, JACKSON,
JOHNSON, LAFAYETTE, MORGAN, PETTIS, PLATTE, RAY, SALINE, ST.
CLAIR AND VERNON COUNTIES

Rates Fringes

Pipefitters.....\$ 55.56 25.80

PLUM0562-004 07/01/2023

ADAIR, AUDRAIN, BOLLINGER, BOONE, BUTLER, CALLAWAY, CAMDEN, CAPE
GIRARDEAU, CARTER, CHARITON, CLARK, COLE, COOPER, CRAWFORD,
DENT, DUNKLIN, FRANKLIN, GASCONADE, GRUNDY, HOWARD, HOWELL,
IRON, JEFFERSON, KNOX, LEWIS, LINCOLN, LINN, LIVINGSTON, MACON,
MADISON, MARIES, MARION, MERCER, MILLER, MISSISSIPPI, MONITEAU,
MONROE, MONTGOMERY, NEW MADRID, OREGON, OSAGE, PEMISCOTT,
PERRY, PHELPS, PIKE, PULASKI, PUTNAM, RALLS, RANDOLPH,
REYNOLDS, RIPLEY, ST. CHARLES, ST. FRANCOIS, STE. GENEVIEVE, ST.
LOUIS, SCHUYLER, SCOTLAND, SCOTT, SHANNON, SHELBY, STODDARD,
SULLIVAN, TEXAS, WARREN, WASHINGTON, AND WAYNE COUNTIES.

Rates Fringes

Plumbers and Pipefitters

Mechanical Contracts

including all piping and

temperature control work

\$7.0 million & under.....\$ 46.66 21.99

Mechanical Contracts

including all piping and

temperature control work

over \$7.0 million.....\$ 46.66 21.99

PLUM0562-016 07/01/2023

CAMDEN, COLE, CRAWFORD, FRANKLIN, JEFFERSON, MARIES, MILLER,
MONITEAU, OSAGE, PHELPS, PULASKI, ST. CHARLES, ST. LOUIS (City
and County), WARREN and WASHINGTON COUNTIES

	Rates	Fringes
Plumbers		
Mechanical Contracts including all piping and temperature control work \$7.0 million & under.....	\$ 46.66	21.99
Mechanical Contracts including all piping and temperature control work over \$7.0 million.....	\$ 46.66	21.99

TEAM0013-001 05/01/2025

	Rates	Fringes
Truck drivers (ADAIR, BUTLER, CLARK, DUNKIN, HOWELL, KNOX, LEWIS, OREGON, PUTNAM, RIPLEY, SCHUYLER AND SCOTLAND COUNTIES)		
GROUP 1.....	\$ 35.84	15.85
GROUP 2.....	\$ 35.99	15.85
GROUP 3.....	\$ 36.11	15.85
GROUP 4.....	\$ 35.74	15.85
Truck drivers (AUDRAIN, BOLLINGER, BOONE, CALLAWAY, CAPE GIRARDEAU, CARTER, COLE, CRAWFORD, DENT, GASCONADE, IRON, MACON, MADISON, MARIES, MARION, MILLER, MISSISSIPPI, MONROE, MONTGOMERY, NEW MADRID, OSAGE, PEMISCOT, PERRY, PHELPS, PIKE, PULASKI, RALLS, REYNOLDS, ST. FRANCOIS, STE. GENEVIEVE, SCOTT, SHANNON, SHELBY, STODDARD, TEXAS, WASHINGTON AND WAYNE COUNTIES)		
GROUP 1.....	\$ 36.57	15.85
GROUP 2.....	\$ 36.72	15.85
GROUP 3.....	\$ 36.84	15.85
GROUP 4.....	\$ 36.73	15.85
Truck drivers (FRANKLIN, JEFFERSON and ST. CHARLES COUNTIES)		
GROUP 1.....	\$ 38.93	15.85
GROUP 2.....	\$ 39.08	15.85
GROUP 3.....	\$ 39.15	15.85
GROUP 4.....	\$ 39.04	15.85
Truck drivers (LINCOLN and WARREN COUNTIES)		
GROUP 1.....	\$ 37.58	15.85
GROUP 2.....	\$ 38.73	15.85
GROUP 3.....	\$ 37.80	15.85
GROUP 4.....	\$ 37.69	15.85

TRUCK DRIVERS CLASSIFICATIONS:

GROUP 1: Flat Bed Trucks, Single Axle; Station Wagons;
Pickup Trucks; Material Trucks, Single Axle; Tank Wagon,
Single Axle

GROUP 2: Agitator and Transit Mix Trucks

GROUP 3: Flat Bed Trucks, Tandem Axle; Articulated Dump Trucks; Material Trucks, Tandem Axle; Tank Wagon, Tandem Axle

GROUP 4: Semi and/or Pole Trailers; Winch, Fork & Steel Trucks; Distributor Drivers and Operators; Tank Wagon, Semi-Trailer; Insley Wagons, Dumpsters, Half-Tracks, Speedace, Euclids and other similar equipment; A-Frame and Derrick Trucks; Float or Low Boy

TEAM0056-001 05/01/2025

	Rates	Fringes
--	-------	---------

Truck drivers (ANDREW, BARTON, BATES, BENTON, CALDWELL, CAMDEN, CARROLL, CEDAR, CHARITON, CHRISTIAN, CLINTON, COOPER, DADE, DALLAS, DAVIESS, DEKALB, DOUGLAS, GREENE, HENRY, HICKORY, HOWARD, JASPER, LACLEDE, LAWRENCE, LINN, LIVINGSTON, MONITEAU, MORGAN, NEWTON, PETTIS, POLK, RANDOLPH, ST. CLAIR, SALINE, VERNON, WEBSTER AND WRIGHT COUNTIES)

GROUP 1.....	\$ 36.27	15.85
GROUP 2.....	\$ 36.43	15.85
GROUP 3.....	\$ 36.42	15.85
GROUP 4.....	\$ 36.54	15.85

Truck drivers: (ATCHISON, BARRY, GENTRY, GRUNDY, HARRISON, HOLT, MCDONALD, MERCER, NODAWAY, OZARK, STONE, SULLIVAN, TANEY AND WORTH COUNTIES)

GROUP 1.....	\$ 35.54	15.85
GROUP 2.....	\$ 35.70	15.85
GROUP 3.....	\$ 35.69	15.85
GROUP 4.....	\$ 35.81	15.85

Truck drivers; (BUCHANAN, JOHNSON AND LAFAYETTE COUNTIES)

GROUP 1.....	\$ 35.93	15.75
GROUP 2.....	\$ 36.04	15.75
GROUP 3.....	\$ 36.08	15.75
GROUP 4.....	\$ 36.08	15.75

TRUCK DRIVER CLASSIFICATIONS

GROUP 1: Flat bed trucks single axle; station wagons; pickup trucks; material trucks single axle; tank wagons single axle.

GROUP 2: Agitator and transit mix-trucks.

GROUP 3: Flat bed trucks tandem axle; articulated dump trucks; material trucks tandem axle; tank wagons tandem axle.

GROUP 4: Semi and/or pole trailers; winch, fork & steel trucks; distributor drivers & operators; tank wagons semi-trailer; insley wagons, dumpsters, half-tracks, speedace, euclids & other similar equipment; A-frames and derrick trucks; float or low boy.

TEAM0245-001 03/26/2012

BARRY, BARTON, CAMDEN, CEDAR, CHRISTIAN, DALLAS, DENT, DOUGLAS, GREENE, HICKORY, HOWELL, JASPER, LACLEDE, LAWRENCE, MCDONALD, MILLER, NEWTON, OZARK, PHELPS, POLK, PULASKI, SHANNON, STONE, TANEY, TEXAS, VERNON, WEBSTER AND WRIGHT COUNTIES

	Rates	Fringes
--	-------	---------

Truck drivers:

Traffic Control Service		
Driver.....	\$ 20.45	0.00

PAID HOLIDAYS: New Year's Day, Decoration Day, July 4th, Labor Day, Thanksgiving Day, Christmas Day, employee's birthday and 2 personal days.

TEAM0541-001 04/01/2025

CASS, CLAY, JACKSON, PLATTE AND RAY COUNTIES

	Rates	Fringes
--	-------	---------

Truck drivers:

GROUP 1.....	\$ 38.61	15.85
GROUP 2.....	\$ 38.04	15.85
GROUP 3.....	\$ 37.52	15.85

TRUCK DRIVERS CLASSIFICATIONS

GROUP 1: Mechanics and Welders, Field; A-Frame Low Boy-Boom ruck Driver.

GROUP 2: Articulated Dump Truck; Insley Wagons: Dump Trucks, Excavating, 5 cu yds and over; Dumpsters; Half-Tracks: Speedace: Euclids & similar excavating equipment Material trucks, Tandem Two teams; Semi-Trailers; Winch trucks-Fork trucks; Distributor Drivers and Operators; Agitator and Transit Mix; Tank Wagon Drivers, Tandem or Semi; One Team; Station Wagons; Pickup Trucks; Material Trucks, Single Axle; Tank Wagon Drivers, Single Axle

GROUP 3: Oilers and Greasers - Field

TEAM0682-002 05/01/2025

ST LOUIS CITY AND COUNTY

	Rates	Fringes
--	-------	---------

Truck drivers:

GROUP 1.....	\$ 37.83	9.85+a+b+c
GROUP 2.....	\$ 37.83	9.85+a+b+c
GROUP 3.....	\$ 37.83	9.85+a+b+c

a. PENSION: 5/1/2012 - \$182.20 per week.

b. HAZMAT PREMIUM: If Hazmat certification on a job site is required by a state or federal agency or requested by project owner or by the employer, employees on that job site shall receive \$1.50 premium pay.

TRUCK DRIVERS CLASSIFICATIONS

GROUP 1 - Pick-up trucks; forklift, single axle; flatbed trucks; job site ambulance, and trucks or trailers of a water level capacity of 11.99 cu. yds. or less

GROUP 2 - Trucks or trailers of a water level capacity of 12.0 cu yds. up to 22.0 cu yds. including euclids, speedace and similar equipment of same capacity and compressors

GROUP 3 - Trucks or trailers of a water level capacity of 22.0 cu. yds & over including euclids, speedace & all floats, flatbed trailers, boom trucks, winch trucks, including small trailers, farm wagons tilt-top trailers, field offices, tool trailers, concrete pumps, concrete conveyors & gasoline tank trailers and truck mounted mobile concrete mixers

FOOTNOTE FOR TRUCK DRIVERS:

c. PAID HOLIDAYS: Christmas Day, Independence Day, Labor Day, Memorial Day, Veterans Day, New Years Day, Thanksgiving Day

d. PAID VACATION: 3 days paid vacation for 600 hours of service in any one contract year; 4 days paid vacation for 800 hours of service in any one contract year; 5 days paid vacation for 1,000 hours of service in any one contract year. When such an employee has completed 3 years of continuous employment with the same employer and then works the above required number of hours, he shall receive double the number of days of vacation specified above. When such an employee has completed 10 years of continuous employment with the same employer and then works the above required number of hours, he shall receive triple the number of days of vacation specified above. When such an employee has completed 15 years of continuous employment with the same employer and then works the above required number of hours, he shall receive 4 times the number of days of vacation specified above.

WELDERS - Receive rate prescribed for craft performing operation to which welding is incidental.

=====
Note: Executive Order (EO) 13706, Establishing Paid Sick Leave for Federal Contractors applies to all contracts subject to the Davis-Bacon Act for which the contract is awarded (and any solicitation was issued) on or after January 1, 2017. If this contract is covered by the EO, the contractor must provide employees with 1 hour of paid sick leave for every 30 hours they work, up to 56 hours of paid sick leave each year. Employees must be permitted to use paid sick leave for their own illness, injury or other health-related needs, including preventive care; to assist a family member (or person who is

like family to the employee) who is ill, injured, or has other health-related needs, including preventive care; or for reasons resulting from, or to assist a family member (or person who is like family to the employee) who is a victim of, domestic violence, sexual assault, or stalking. Additional information on contractor requirements and worker protections under the EO is available at <https://www.dol.gov/agencies/whd/government-contracts>.

Note: Executive Order 13658 generally applies to contracts subject to the Davis-Bacon Act that were awarded on or between January 1, 2015 and January 29, 2022, and that have not been renewed or extended on or after January 30, 2022. Executive Order 13658 does not apply to contracts subject only to the Davis-Bacon Related Acts regardless of when they were awarded. If a contract is subject to Executive Order 13658, the contractor must pay all covered workers at least \$13.30 per hour (or the applicable wage rate listed on this wage determination, if it is higher) for all hours spent performing on the contract in 2025. The applicable Executive Order minimum wage rate will be adjusted annually. Additional information on contractor requirements and worker protections under Executive Order 13658 is available at www.dol.gov/whd/govcontracts.

Unlisted classifications needed for work not included within the scope of the classifications listed may be added after award only as provided in the labor standards contract clauses (29CFR 5.5 (a) (1) (iii)).

The body of each wage determination lists the classifications and wage rates that have been found to be prevailing for the type(s) of construction and geographic area covered by the wage determination. The classifications are listed in alphabetical order under rate identifiers indicating whether the particular rate is a union rate (current union negotiated rate), a survey rate, a weighted union average rate, a state adopted rate, or a supplemental classification rate.

Union Rate Identifiers

A four-letter identifier beginning with characters other than ""SU"", ""UAVG"", ?SA?, or ?SC? denotes that a union rate was prevailing for that classification in the survey. Example: PLUM0198-005 07/01/2024. PLUM is an identifier of the union whose collectively bargained rate prevailed in the survey for this classification, which in this example would be Plumbers. 0198 indicates the local union number or district council number where applicable, i.e., Plumbers Local 0198. The next number, 005 in the example, is an internal number used in processing the wage determination. The date, 07/01/2024 in the example, is the effective date of the most current negotiated rate.

Union prevailing wage rates are updated to reflect all changes over time that are reported to WHD in the rates in the collective bargaining agreement (CBA) governing the classification.

Union Average Rate Identifiers

The UAVG identifier indicates that no single rate prevailed for

those classifications, but that 100% of the data reported for the classifications reflected union rates. EXAMPLE: UAVG-OH-0010 01/01/2024. UAVG indicates that the rate is a weighted union average rate. OH indicates the State of Ohio. The next number, 0010 in the example, is an internal number used in producing the wage determination. The date, 01/01/2024 in the example, indicates the date the wage determination was updated to reflect the most current union average rate.

A UAVG rate will be updated once a year, usually in January, to reflect a weighted average of the current rates in the collective bargaining agreements on which the rate is based.

Survey Rate Identifiers

The ""SU"" identifier indicates that either a single non-union rate prevailed (as defined in 29 CFR 1.2) for this classification in the survey or that the rate was derived by computing a weighted average rate based on all the rates reported in the survey for that classification. As a weighted average rate includes all rates reported in the survey, it may include both union and non-union rates. Example: SUFL2022-007 6/27/2024. SU indicates the rate is a single non-union prevailing rate or a weighted average of survey data for that classification. FL indicates the State of Florida. 2022 is the year of the survey on which these classifications and rates are based. The next number, 007 in the example, is an internal number used in producing the wage determination. The date, 6/27/2024 in the example, indicates the survey completion date for the classifications and rates under that identifier.

?SU? wage rates typically remain in effect until a new survey is conducted. However, the Wage and Hour Division (WHD) has the discretion to update such rates under 29 CFR 1.6(c)(1).

State Adopted Rate Identifiers

The ""SA"" identifier indicates that the classifications and prevailing wage rates set by a state (or local) government were adopted under 29 C.F.R 1.3(g)-(h). Example: SAME2023-007 01/03/2024. SA reflects that the rates are state adopted. ME refers to the State of Maine. 2023 is the year during which the state completed the survey on which the listed classifications and rates are based. The next number, 007 in the example, is an internal number used in producing the wage determination. The date, 01/03/2024 in the example, reflects the date on which the classifications and rates under the ?SA? identifier took effect under state law in the state from which the rates were adopted.

----- WAGE DETERMINATION APPEALS PROCESS

1) Has there been an initial decision in the matter? This can be:

- a) a survey underlying a wage determination
- b) an existing published wage determination
- c) an initial WHD letter setting forth a position on a wage determination matter
- d) an initial conformance (additional classification and rate) determination

On survey related matters, initial contact, including requests

for summaries of surveys, should be directed to the WHD Branch of Wage Surveys. Requests can be submitted via email to davisbaconinfo@dol.gov or by mail to:

Branch of Wage Surveys
Wage and Hour Division
U.S. Department of Labor
200 Constitution Avenue, N.W.
Washington, DC 20210

Regarding any other wage determination matter such as conformance decisions, requests for initial decisions should be directed to the WHD Branch of Construction Wage Determinations. Requests can be submitted via email to BCWD-Office@dol.gov or by mail to:

Branch of Construction Wage Determinations
Wage and Hour Division
U.S. Department of Labor
200 Constitution Avenue, N.W.
Washington, DC 20210

2) If an initial decision has been issued, then any interested party (those affected by the action) that disagrees with the decision can request review and reconsideration from the Wage and Hour Administrator (See 29 CFR Part 1.8 and 29 CFR Part 7). Requests for review and reconsideration can be submitted via email to dba.reconsideration@dol.gov or by mail to:

Wage and Hour Administrator
U.S. Department of Labor
200 Constitution Avenue, N.W.
Washington, DC 20210

The request should be accompanied by a full statement of the interested party's position and any information (wage payment data, project description, area practice material, etc.) that the requestor considers relevant to the issue.

3) If the decision of the Administrator is not favorable, an interested party may appeal directly to the Administrative Review Board (formerly the Wage Appeals Board). Write to:

Administrative Review Board
U.S. Department of Labor
200 Constitution Avenue, N.W.
Washington, DC 20210.

=====

END OF GENERAL DECISION

..

SUMMARY OF QUANTITIES:

SUMMARY OF QUANTITIES				
LA MONTE MASON STREET SIDEWALK IMPROVEMENTS TAP-9901(539)				
LINE NO.	ITEM NO.	DESCRIPTION	UNIT	QUANTITY
ROADWAY				
0010	202-20.10	REMOVAL OF IMPROVEMENTS	LS	1
0020	206-30.00	CLASS 3 EXCAVATION	CY	8.0
0030	616-10.25	CHANNELIZER (TRIM-LINE)	EACH	40
0040	618-10.00	MOBILIZATION	LS	1
0050	627-40.00	CONTRACTOR FURNISHED SURVEYING AND STAKING	LS	1
0060	725-03.12	12 IN. PIPE GROUP B	LF	143
SIGNING, STRIPING,SIGNALS, LIGHTING				
0070	616-10.05	CONSTRUCTION SIGNS	SF	76
0080	620-00.15	PREFORMED THERMOPLASTIC PAVEMENT MARKING, 24 IN. WHITE	LF	30
0090	620-00.36	PREFORMED THERMOPLASTIC PAVEMENT MARKING, 30 IN WHITE MIDBLOCK	EACH	43
0100	902-08.33	PED CROSSING SIGNS	SF	38
BRIDGE				
0110	608-40.23	SIDEWALK HAND-RAILING WITHOUT BALUSTERS	LF	56
0120	703-42.14	CLASS B-2 CONCRETE	CY	8.0
0130	706-10.00	REINFOCRING STEEL	LBS	650
0140	712-99.11	C9X13.4, GRADE A36	LBS	730
BIKE/PED FACILITIES				
0150	207-10.00	LINEAR GRADING CLASS 1	STA	17.3
0160	304-05.04	TYPE 5 AGGREGATE FOR BASE (4 IN. THICK)	SY	1005
0170	310-50.03	GRAVEL (A) OR CRUSHED STONE (B)	SY	100
0180	502-11.06	4 IN. CONCRETE (NON-REINF.)	SY	662.4
0190	502-11.07	7 IN. CONCRETE (NON-REINF.)	SY	28.2
0200	502-11.08	8 IN. CONCRETE (NON-REINF.)	SY	234.2
0210	603-99.02	WATER VALVE HEIGHT ADJUSTMENT	EACH	4
0220	603-99.02	WATER METER HEIGHT ADJUSTMENT	EACH	1
0230	608-10.10	CONCRETE CURB RAMP	SY	122.2
0240	608-10.12	TRUNCATED DOMES	SF	130
LANDSCAPING/STREETSCAPING				
0250	805-10.00A	SEEDING-COOL SEASON GRASSES	ACRE	0.1
0260	806-10.19	SILT FENCE	LF	1266

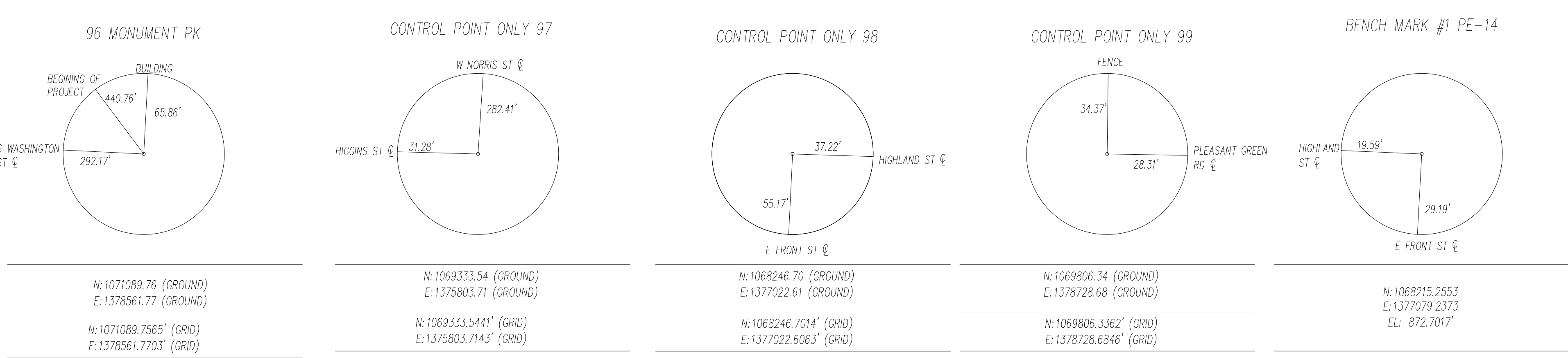
NOTES:

QUANTITIES SHOWN ON THESE PLANS ARE NOT GUARANTEED BY THE OWNER AND ARE USED SOLELY FOR THE PURPOSE OF COMPARING BIDS AND AWARDING THE CONTRACT, AND MAY OR MAY NOT REPRESENT THE ACTUAL QUANTITIES ON THE JOB, SEE SPECIFICATIONS.

ANY ITEMS NOT SHOWN IN BID TAB, SHALL BE CONSIDERED SUBSIDIARY TO OTHER ITEMS.

IT SHALL BE THE RESPONSIBILITY OF THE CONTRACTOR TO SUBMIT FORM 106, TO MISSOURI DEPARTMENT OF NATURAL RESOURCES, HISTORIC PRESERVATION PROGRAM FOR ANY BORROW AREAS TO BE USED ON THIS PROJECT.

CONTROL POINT & BENCHMARK DATA



GENERAL NOTES:

DESIGN SPECIFICATIONS:

2011 AASHTO ROADSIDE DESIGN GUIDE, 4TH EDITION

CONSTRUCTION SPECIFICATIONS:

MISSOURI STANDARD SPECIFICATIONS FOR HIGHWAY CONSTRUCTION, 2025 EDITION

MISSOURI STANDARD PLANS FOR HIGHWAY CONSTRUCTION, 2025 EDITION

NOTES:

- EXISTING UTILITIES AND UNDERGROUND INSTALLATIONS HAVE BEEN LOCATED TO THE GREATEST EXTENT PRACTICAL THROUGH REVIEW OF CONSTRUCTION PLANS AND SURFACE OBSERVATIONS. THE CONTRACTOR SHALL FIELD VERIFY ALL HORIZONTAL AND VERTICAL LINES AND GRADES OF EXISTING UTILITIES PRIOR TO THE CONSTRUCTION OF IMPROVEMENTS. THE CONTRACTOR SHALL NOTIFY THE ENGINEER IMMEDIATELY UPON DISCOVERING A DISCREPANCY BETWEEN THE CONTRACT DRAWINGS AND ACTUAL FIELD CONDITIONS. CONTACT ONE CALL.
- THE CONTRACTOR MUST COORDINATE CONSTRUCTION WITH THE NECESSARY AUTHORITIES.
- NO WORK SHALL COMMENCE UNTIL ALL NECESSARY PERMITS ARE OBTAINED BY THE CONTRACTOR.
- CONTRACTOR SHALL BE RESPONSIBLE FOR ALL LINE AND GRADE STAKES.
- CONTRACTOR SHALL REMOVE, PRESERVE, AND REPLACE ALL SIGNS, MAIL BOXES, FENCES, METAL FLAG POLE BASES AND THE LIKE, WITHIN THE LIMITS OF THE PROPOSED IMPROVEMENTS. THIS WORK SHALL BE CONSIDERED INCIDENTAL TO CONSTRUCTION.
- ALL TRAFFIC WAYS INCLUDING DRIVEWAYS, ALLEYWAYS, ETC., SHALL REMAIN ACCESSIBLE TO RESIDENTIAL AND EMERGENCY VEHICLES DURING PROJECT DURATION.
- ALL CONSTRUCTION AND EXCAVATION ACTIVITIES SHALL BE CONFINED TO EASEMENTS, ROAD RIGHT-OF-WAY, AND/OR WORK AREA LIMITS AS SHOWN ON DRAWINGS.
- CONTRACTOR SHALL RAISE OR LOWER ALL AFFECTED MANHOLE RIMS AND VALVE BOXES IN THE WORK AREA TO MATCH PROPOSED GRADE.
- ALL AREAS DISTURBED BY CONSTRUCTION ARE FIRST TO BE FINE GRADED AND THEN FOLLOWED BY SEED AND STRAW MULCH, UNLESS OTHERWISE NOTED, OVER, MIN. 4" TOPSOIL STOCKPILED FROM SITE OR HAULED IN AS REQUIRED.
- PROVIDE POSITIVE DRAINAGE FROM ALL IMPROVED AREAS, SO THAT RUNOFF DRAINS TO DRAIN WAYS.
- ALL CONTOURS AND SPOT ELEVATIONS SHOWN ARE FINISH GRADE.
- ANY DAMAGE TO EXISTING STRUCTURES, VEGETATION, OR IMPROVEMENTS RESULTING FROM NEW CONSTRUCTION ACTIVITIES SHALL BE REPAIRED BY THE CONTRACTOR AT NO ADDITIONAL COST TO THE OWNER.
- ALL SIDEWALKS AND ADA RAMPS SHALL BE IN ACCORDANCE WITH ADA REGULATIONS.
- CONTRACTOR TO PROTECT ANY STORM INLETS, THAT RECEIVE STORM WATER FROM THE AREA OF CONSTRUCTION, FROM SEDIMENT. EROSION CONTROL DEVICES SHALL BE MAINTAINED DURING THE WHOLE CONSTRUCTION PERIOD BY THE CONTRACTOR. ALL EROSION CONTROL DEVICES, NOT LISTED IN THE PLANS, SHALL BE INCIDENTAL TO CONSTRUCTION.
- ALL TRENCHES, WHICH LIE UNDER PROPOSED PAVEMENT, OR LIE WITHIN TWO FEET OF BACK OF CURB, SHALL BE BACKFILLED TO PAVEMENT SUB-GRADE WITH COMPACTED GRANULAR BACK FILL.
- TRENCHES SHALL BE COMPACTED TO 95% STANDARD PROCTOR WHEN PIPES ARE LAID IN FILL.
- ALL REMOVALS NECESSARY TO COMPLETE THE PROJECT AS SHOWN ON THE PLANS, SHALL BE CONSIDERED INCIDENTAL TO THE PROJECT.
- ANY WORK INDICATED ON THE PLAN THAT EXTENDS BEYOND THE PROJECT LIMITS IS CONSIDERED INCIDENTAL TO AND A PART OF THE CONSTRUCTION ON THIS PROJECT.

LEGEND

(USED IN PLANS)

-----	EXISTING CONTOUR (MAJOR)
-----	EXISTING CONTOUR (MINOR)
-----	EXISTING FEATURE
-X-X-X-	EXISTING FENCE
-□-□-	EXISTING GUARDRAIL
-----	SECTION LINE
—ℙ—	EXISTING PROPERTY LINE
-----	EXISTING EASEMENT
—STM—	EXISTING STORM WATER
—GS—	EXISTING GAS LINE
—W—	EXISTING WATER LINE
—SAN—	EXISTING SANITARY SEWER
—UGE—	EXISTING UNDERGROUND ELECTRIC
— — OHC —	EXISTING OVERHEAD ELECTRIC
—FO—	EXISTING UNDERGROUND TELEPHONE
— — OHT —	EXISTING OVERHEAD TELEPHONE
ℙ	EXISTING MAILBOX
•GTPST	EXISTING GATE POST
□	EXISTING STORM INLET
▲	EXISTING WATER METER
✕	EXISTING WATER VALVE
●	EXISTING FIRE HYDRANT
●	EXISTING SANITARY MANHOLE
●	EXISTING POWER POLE
★	EXISTING LIGHT POLE
←	EXISTING GUY WIRE ANCHOR
■	EXISTING TELEPHONE PEDESTAL
▼MS	EXISTING SIGN
🌳	EXISTING TREE
ΔCP	CONTROL POINT
○	FOUND CORNER
⊙	EXISTING BENCHMARK

NOTE:

DASHED OR SCREENED SYMBOL INDICATES EXISTING FEATURE.

ABBREVIATION TABLE

BC:	BACK OF CURB
℄	CENTERLINE
CONT.	CONTINUOUS
C.P.	CONTROL POINT
DND	DO NOT DISTURB
EG:	EXISTING GRADE
EX:	EXISTING
FG:	FINISH GRADE
FL:	FLOW LINE
GL:	GUTTER LINE
MAX.	MAXIMUM
MIN.	MINIMUM
OFF:	OFFSET
ℙ	PROPERTY LINE
PR:	PROPOSED
RBO	REMOVE BY OTHERS
ROW OR R/W	RIGHT-OF-WAY
STA:	STATION
TBM	TEMPORARY BENCHMARK
T.C.E.	TEMPORARY CONSTRUCTION EASEMENT
TEMP.	TEMPORARY
TYP.	TYPICAL
UIP	USE IN PLACE

CITY OF LA MONTE, MASON STREET
SIDEWALK
OWN PROJECT NO.24KC40010
HORIZONTAL DATUM
MISSOURI STATE PLANE COORDINATE
SYSTEM, 1983
MISSOURI WEST ZONE, 2011
ADJUSTMENT

VERTICAL DATUM:
NAVD 83 W GEOID 18
CONTROL WAS ESTABLISHED VIA THE
MISSOURI VRS NETWORK

COMBINED ADJUSTMENT FACTOR:
0.9999842 (1/x=1.00000158)
POINTS AND LINE WORK ARE GROUND
DISTANCES SCALED ABOUT THE
ORIGIN (0,0,0)



Engineering beyond.™

8455 College Boulevard
Overland Park, KS 66210
816.777.0400
weareown.com

FORMERLY ANDERSON ENGINEERING

LA MONTE TAP
TAP 9901(539)

MASON STREET
LA MONTE, MO

REVISIONS

NO.	DESCRIPTION	DATE
1	ADDENDUM 1	1/5/2026

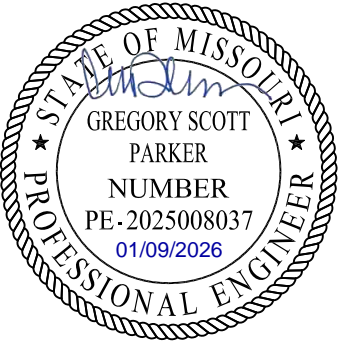
DRAWING INFORMATION

PROJECT NO: TAP 9901(539)

DRAWN BY: KEL

CHECK BY: GSP

ISSUED DATE: 1/9/2026



A licensed Missouri
Engineering Corporation
COA# 00062

SHEET TITLE

ROADWAY
QUANTITIES AND
NOTES

SHEET NUMBER

03

03 OF 28

QUANTITIES BREAKDOWN:

LINEAR GRADING CLASS 1			
STA.	TO	STA.	STA.
10+67.58	-	13+94.57	03+26.99
14+20.38	-	14+46.47	00+26.09
14+69.61	-	18+04.20	03+34.59
18+29.40	-	21+70.78	03+41.38
21+88.77	-	28+89.90	07+01.13
TOTAL			1730.18
USE			17.3

TYPE 5 AGGREGATE FOR BASE (4 IN. THICK)				
STA.	TO	STA.	SY	NOTE
10+67.58	-	12+30.38	90.41	SD & DRIVEWAY
12+40.62	-	13+94.57	112.51	SD & ADA RAMPS
14+20.38	-	18+04.20	233.50	ADA RAMPS & SD & DRIVEWAY
18+29.40	-	21+55.19	180.67	ADA RAMPS & SD & DRIVEWAY
21+65.19	-	21+70.78	2.78	ADA RAMP
21+88.77	-	21+95.29	2.78	ADA RAMP
22+02.29	-	28+89.30	382.12	SD & DRIVEWAY & ADA
TOTAL			1004.76	
USE			1005	

GRAVEL (A) OR CRUSHED STONE (B)			
STA.	TO	STA.	SY
16+20.21	-	16+42.46	24.67
20+73.67	-	21+04.51	34.26
22+68.24	-	22+83.50	16.95
26+86.96	-	26+98.94	7.99
27+51.48	-	27+65.57	15.72
TOTAL			99.59
USE			100

4" CONCRETE (NON-REINF.)			
STA.	TO	STA.	SY
10+67.58	-	11+80.31	62.59
12+19.88	-	12+30.38	5.83
12+40.62	-	13+71.71	72.83
14+87.71	-	16+20.26	73.64
18+39.97	-	20+73.21	129.83
21+04.51	-	21+55.19	28.16
22+02.29	-	22+68.24	37.09
22+83.50	-	23+32.24	27.08
23+57.36	-	23+69.24	6.60
24+34.49	-	25+33.66	55.10
25+47.90	-	26+30.61	45.95
26+41.27	-	26+86.96	25.39
26+98.94	-	27+51.42	29.15
27+65.57	-	28+79.30	63.19
TOTAL			662.41
USE			662.4

7" CONCRETE (NON-REINF.)			
STA.	TO	STA.	SY
23+83.81	-	24+34.50	28.15
TOTAL			28.15
USE			28.2

8" CONCRETE (NON-REINF.)			
STA.	TO	STA.	SY
11+80.31	-	12+19.88	65.94
16+20.26	-	16+42.46	12.34
20+73.67	-	21+04.51	17.13
22+68.24	-	22+83.50	8.48
23+32.24	-	23+57.36	41.86
23+69.24	-	23+83.81	32.39
25+33.66	-	25+47.90	23.74
26+30.61	-	26+41.27	17.77
26+86.96	-	26+98.94	6.66
27+51.42	-	27+65.57	7.86
TOTAL			234.16
USE			234.2

TRUNCATED DOMES	
STATION	SF
13+79.21	10.00
13+79.21	10.00
13+93.50	10.00
14+85.21	10.00
14+22.53	10.00
14+43.75	10.00
14+72.11	10.00
14+85.21	10.00
18+02.50	10.00
18+30.97	10.00
21+69.19	10.00
21+91.29	10.00
28+88.30	10.00
TOTAL	130.00
USE	130

SIDEWALK HAND-RAILING WITHOUT BALUSTERS	
STATION	LF
12+30.38	22.00
21+55.19	20.00
21+95.29	14.00
TOTAL	56.00
USE	56

PREFORMED THERMOPLASTIC PAVEMENT MARKING, 24 IN. WHITE			
STA.	TO	STA.	LF
13+71.21	-	13+71.41	10.00
14+58.72	-	14+68.72	10.00
21+70.78	-	21+80.37	9.60
TOTAL			29.60
USE			30

PREFORMED THERMOPLASTIC PAVEMENT MARKING, 30 IN. WHITE MIDBLOCK			
STA.	TO	STA.	EA
13+76.37	-	13+82.21	6.00
13+98.27	-	14+18.15	6.00
13+93.35	-	14+17.35	7.00
14+46.72	-	14+66.72	6.00
18+05.78	-	18+25.78	6.00
21+72.37	-	21+88.37	5.00
28+91.30	-	29+12.30	7.00
TOTAL			43.00
USE			43

CONCRETE CURB RAMP	
STATION	SY
13+71.71	15.32
13+75.55	24.38
14+20.07	27.92
17+88.96	20.11
18+29.39	17.13
21+65.19	5.70
21+55.91	2.94
21+88.77	3.18
28+79.30	5.56
TOTAL	122.24
USE	122.2

CONSTRUCTION SIGNS			
STATION	SIZE	SF	NOTES
10+66.36	24"x12"	2.00	SIDEWALK CLOSED
13+51.01	36"x36"	9.00	SHOULDER WORK AHEAD
13+51.71	36"x36"	9.00	FLAGGER
13+76.44	24"x12"	2.00	SIDEWALK CLOSED
13+77.54	24"x12"	2.00	SIDEWALK CLOSED
13+77.94	24"x12"	2.00	SIDEWALK CLOSED
13+95.70	24"x12"	2.00	SIDEWALK CLOSED
14+83.52	24"x12"	2.00	SIDEWALK CLOSED
14+19.29	24"x12"	2.00	SIDEWALK CLOSED
14+19.43	24"x12"	2.00	SIDEWALK CLOSED
14+30.49	24"x12"	2.00	SIDEWALK CLOSED
14+47.04	24"x12"	2.00	SIDEWALK CLOSED
14+68.85	24"x12"	2.00	SIDEWALK CLOSED
14+85.32	24"x12"	2.00	SIDEWALK CLOSED
14+97.05	24"x12"	2.00	SIDEWALK CLOSED
15+10.39	36"x36"	9.00	SHOULDER WORK AHEAD
15+12.43	36"x36"	9.00	FLAGGER
17+89.57	24"x12"	2.00	SIDEWALK CLOSED
17+89.77	24"x12"	2.00	SIDEWALK CLOSED
18+05.39	24"x12"	2.00	SIDEWALK CLOSED
18+28.32	24"x12"	2.00	SIDEWALK CLOSED
21+71.96	24"x12"	2.00	SIDEWALK CLOSED
21+87.55	24"x12"	2.00	SIDEWALK CLOSED
28+91.24	24"x12"	2.00	SIDEWALK CLOSED
TOTAL		76.00	
USE		76	

CHANNELIZER	
STA.	EACH
10+66.36	2.00
13+76.44	2.00
13+77.54	2.00
13+77.94	2.00
13+95.70	2.00
14+83.52	2.00
14+19.29	2.00
14+19.43	2.00
14+30.49	2.00
14+47.04	2.00
14+68.85	2.00
14+85.32	2.00
14+97.05	2.00
17+89.57	2.00
17+89.77	2.00
18+05.39	2.00
18+28.32	2.00
21+71.96	2.00
21+87.55	2.00
28+91.24	2.00
TOTAL	40.00
USE	40

PEDESTRIAN CROSSING SIGNS						
STA.	OFF	SIDE	NOTE	SIGN	SIZE	SF
13+82.02	57.23	L	PEDESTRIAN CROSSING	W11-2	30"x30"	6.25
13+87.99	4.26	L	PEDESTRIAN CROSSING	W11-2	30"x30"	6.25
14+22.99	10.75	R	PEDESTRIAN CROSSING	W11-2	30"x30"	6.25
14+80.42	6.11	L	PEDESTRIAN CROSSING	W11-2	30"x30"	6.25
18+00.44	10.58	L	PEDESTRIAN CROSSING	W11-2	30"x30"	6.25
28+85.02	6.24	L	PEDESTRIAN CROSSING	W11-2	30"x30"	6.25
TOTAL						37.5
USE						38

PEDESTRIAN BRIDGES			
STA.	TO	STA.	EACH
12+30.38	-	12+40.62	1.00
21+55.19	-	21+65.19	1.00
21+95.29	-	22+02.29	1.00
TOTAL			3.00
USE			3

12 IN. PIPE GROUP B			
STA.	TO	STA.	LF
22+66.71	-	22+86.92	20.21
23+03.89	-	23+60.67	56.77
23+66.45	-	24+32.77	66.31
TOTAL			143.29
USE			143

SEEDING-WARM SEASON GRASSES			
STA.	TO	STA.	ACRE
10+67.58	-	13+84.57	0.01
14+20.38	-	18+04.20	0.01
18+29.40	-	21+65.19	0.03
21+88.37	-	28+89.90	0.03
TOTAL			0.08
USE			0.1

SILT FENCE			
STA.	TO	STA.	LF
10+67.58	-	11+80.31	13.62
12+19.89	-	12+30.38	139.45
12+40.62	-	13+76.53	89.79
13+81.43	-	13+94.57	54.61
13+75.55	-	13+76.71	13.18
13+81.68	-	14+82.71	249.95
14+20.38	-	14+31.13	69.15
14+88.93	-	14+95.40	86.41
14+72.11	-	14+82.71	49.16
14+69.61	-	16+20.26	14.82
16+42.46	-	17+32.18	153.17
17+35.20	-	17+89.23	103.20
17+93.14	-	18+03.50	46.63
18+29.39	-	20+73.67	52.83
21+04.51	-	21+70.19	129.10
21+90.29	-	22+68.24	0.00
22+83.50	-	23+32.25	1.00
23+57.40	-	23+69.24	0.00
23+83.81	-	25+33.66	0.00
25+47.88	-	26+30.61	0.00
26+41.27	-	26+86.96	0.00
26+98.94	-	27+51.42	0.00
27+65.57	-	28+89.30	0.00
TOTAL			1266.08
USE			1266



8455 College Boulevard
Overland Park, KS 66210
816.777.0400
weareown.com

FORMERLY ANDERSON ENGINEERING

LA MONTE TAP
TAP 9901(539)

MASON STREET
LA MONTE, MO

REVISIONS

NO.	DESCRIPTION	DATE
1	ADDENDUM 1	1/5/2026

DRAWING INFORMATION

PROJECT NO: TAP 9901(539)

DRAWN BY: KEL

CHECK BY: GSP

ISSUED DATE: 1/9/2026



A licensed Missouri
Engineering Corporation
COA# 00062

SHEET TITLE

QUANTITIES
BREAKDOWN

SHEET NUMBER

04

04 OF 28



Engineering beyond.™

8455 College Boulevard
Overland Park, KS 66210
816.777.0400
weareown.com

FORMERLY ANDERSON ENGINEERING

LA MONTE TAP
TAP 9901(539)

MASON STREET
LA MONTE, MO

REVISIONS

NO.	DESCRIPTION	DATE
1	ADDENDUM 1	1/5/2026

DRAWING INFORMATION

PROJECT NO: TAP 9901(539)

DRAWN BY: KEL

CHECK BY: GSP

ISSUED DATE: 1/9/2026



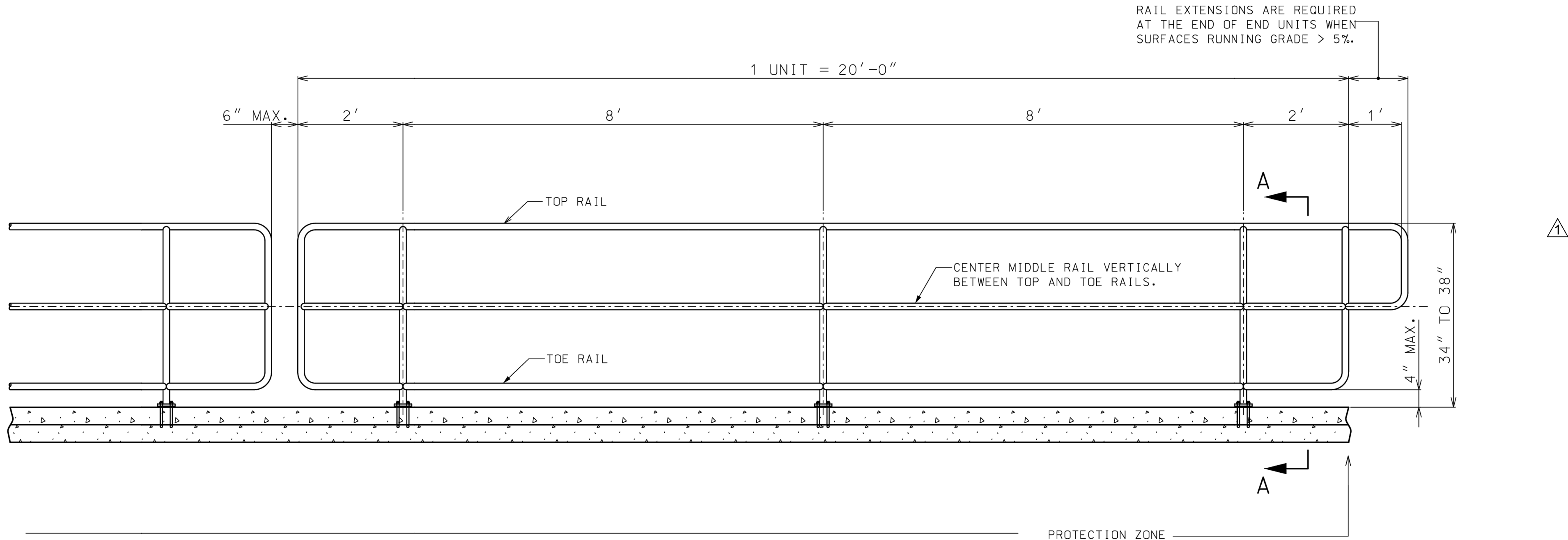
A licensed Missouri
Engineering Corporation
COA# 00062

SHEET TITLE
PEDESTRIAN
BRIDGE

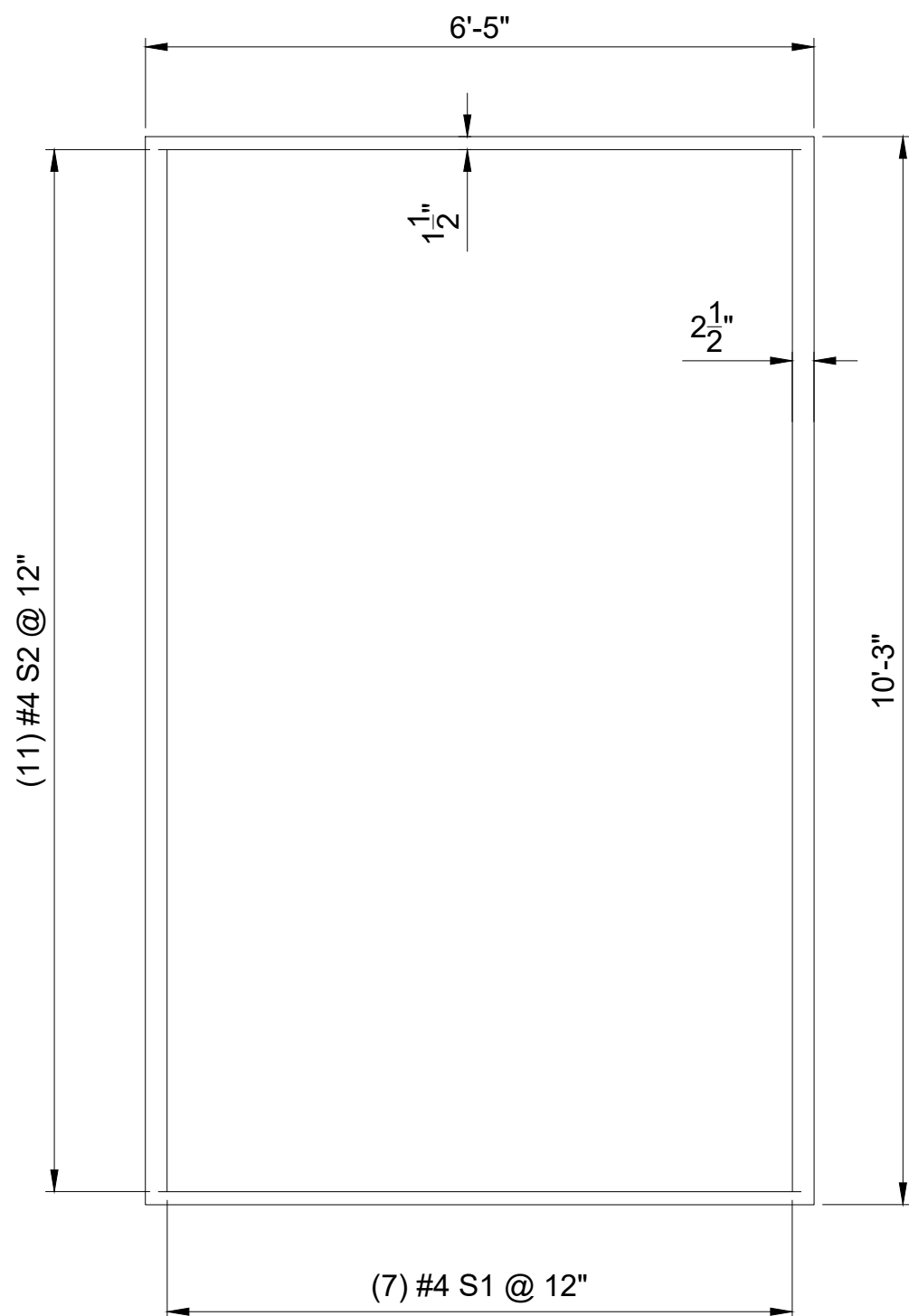
SHEET NUMBER

24

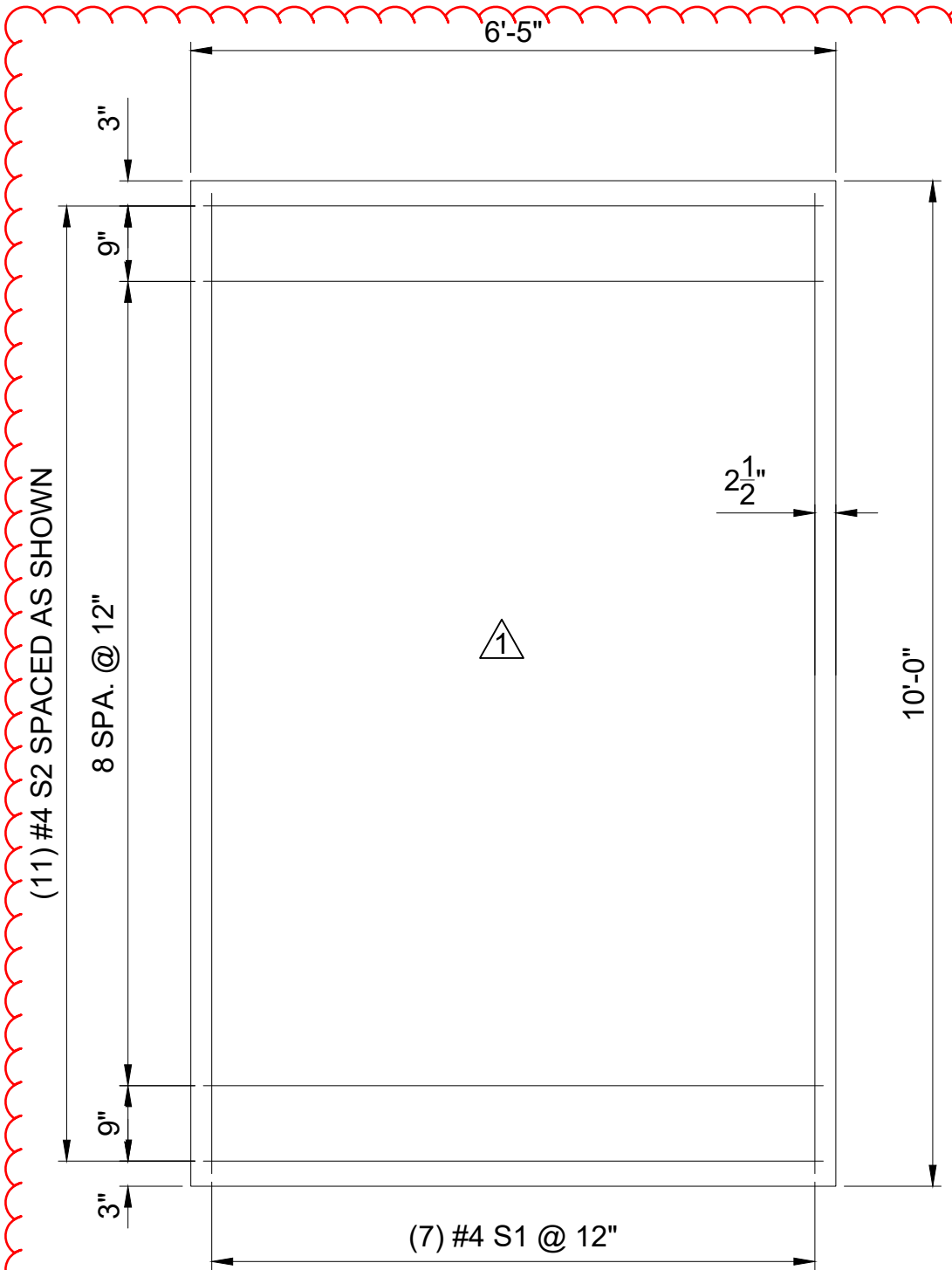
24 OF 28



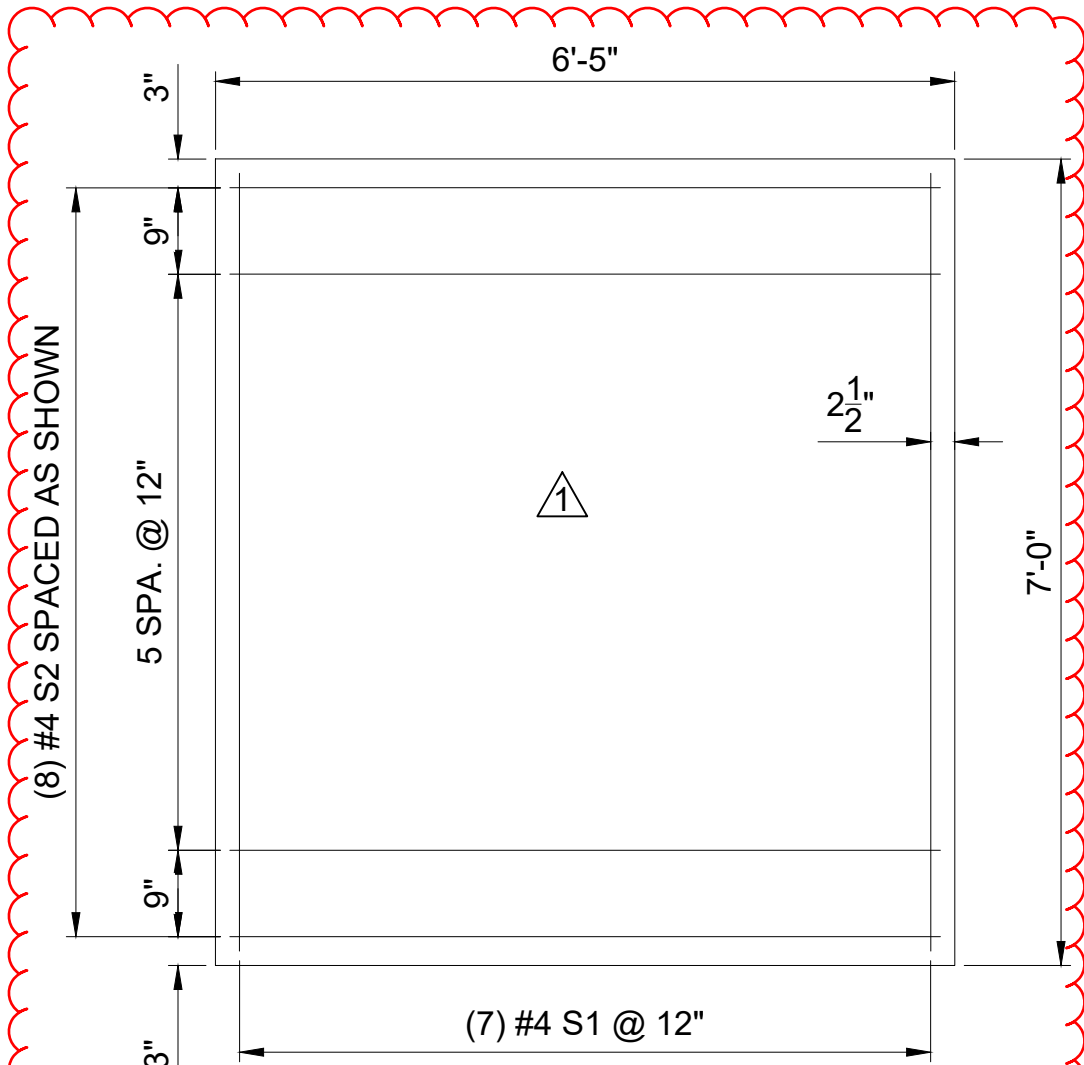
SIDEWALK HANDRAILING WITHOUT BALUSTERS



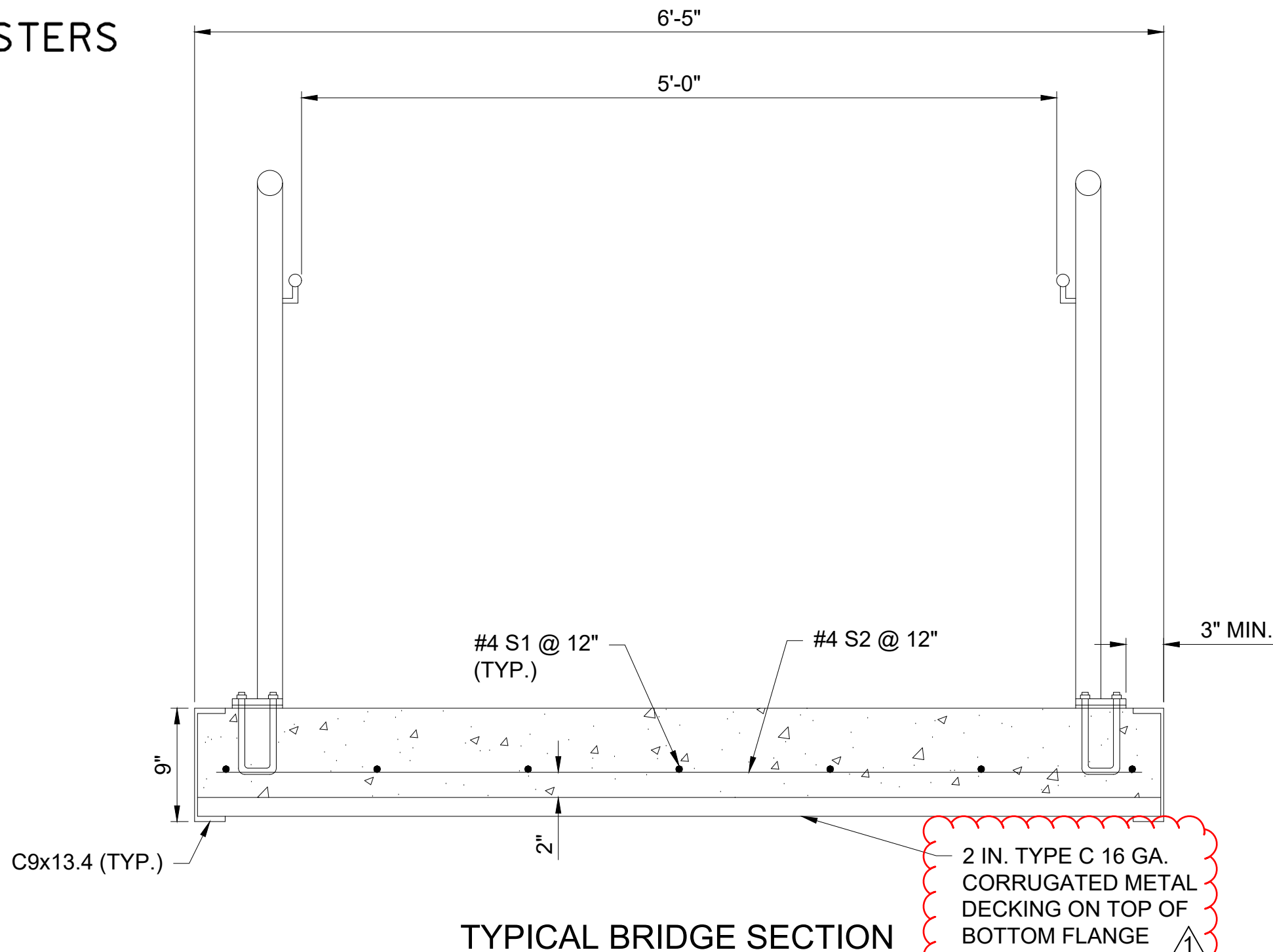
WEST MASON STREET BRIDGE
STA 12+30.38 - STA 12+40.62



EAST MASON STREET BRIDGE
STA 21+55.19 - STA 21+65.19



EAST MASON STREET BRIDGE
STA 21+95.29 - STA 22+02.29



TYPICAL BRIDGE SECTION

GENERAL NOTES:

REINFORCING STEEL SHALL BE SHIFTED TO CLEAR ANCHOR BOLTS BY 1 1/2"

C9X13.4 CHANNEL SHALL BE ASTM A36 STEEL AND FINISHED IN A PROTECTIVE COATING, EITHER GALVANIZED OR PROTECTIVE PAINT SYSTEM PER SEC. 1081 OF THE MISSOURI STANDARD SPECIFICATIONS FOR HIGHWAY CONSTRUCTION.

CORRUGATED METAL STAY-IN-PLACE FORMS SHALL BE GALVANIZED AND CONSIDERED SUBSIDIARY TO THE PEDESTRIAN BRIDGES.

ANY WORK PERTAINING TO SHELVES FOR THE PEDESTRIAN BRIDGES SHALL BE CONSIDERED SUBSIDIARY TO THE BRIDGES.

PLAN OF PEDESTRIAN BRIDGES SHOWING REINFORCEMENT