

STUDY PURPOSE

US 61 CORRIDOR STUDY

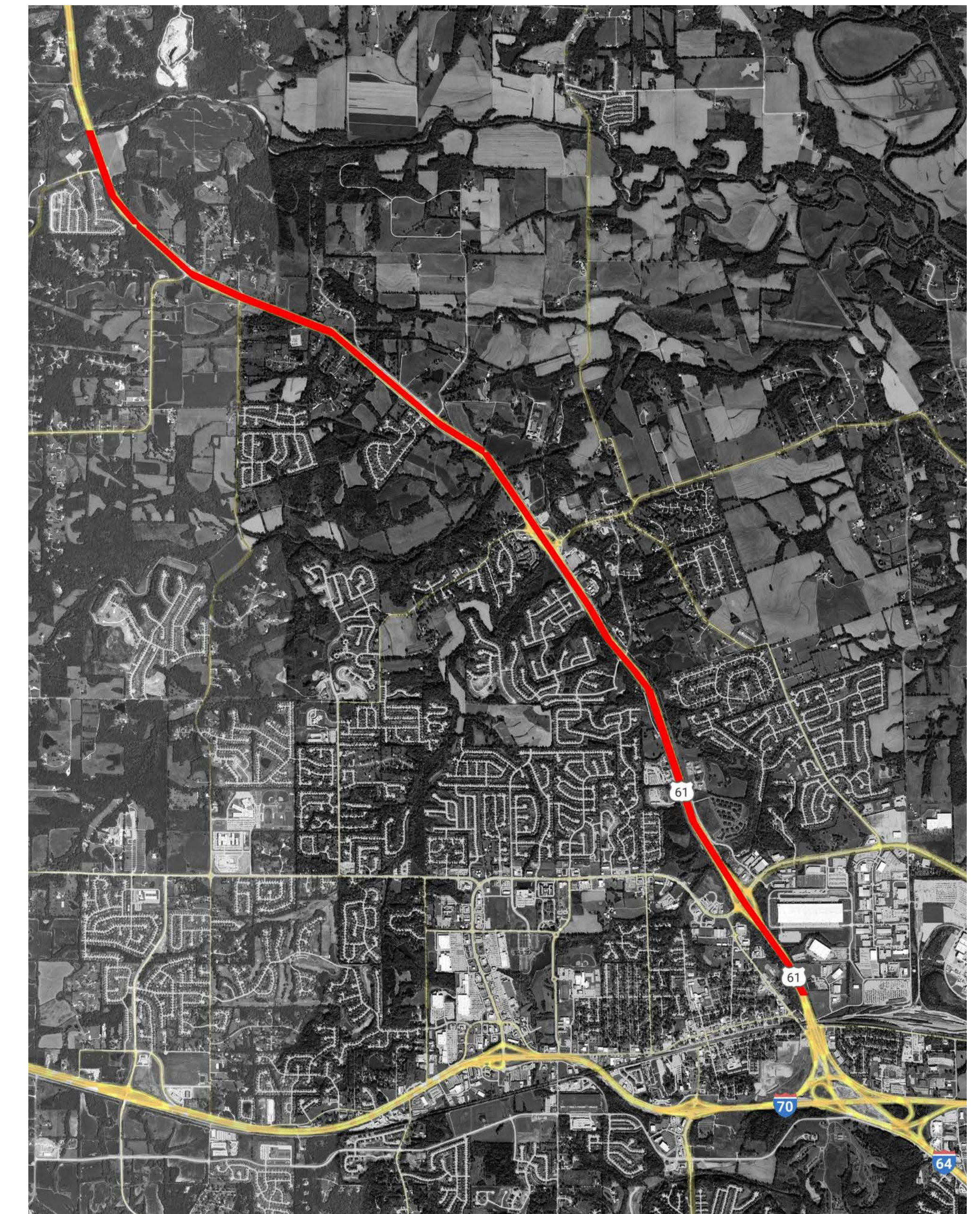
PURPOSE:

Evaluate alternatives to achieve project goals for enhanced safety and mobility

- Evaluate existing traffic flow and safety issues
- Forecast future changes in the US 61 corridor
- Develop recommendations to improve safety and accommodate growth
- Prepare planning-level cost estimates
- Support programming of projects

PROJECT GOALS:

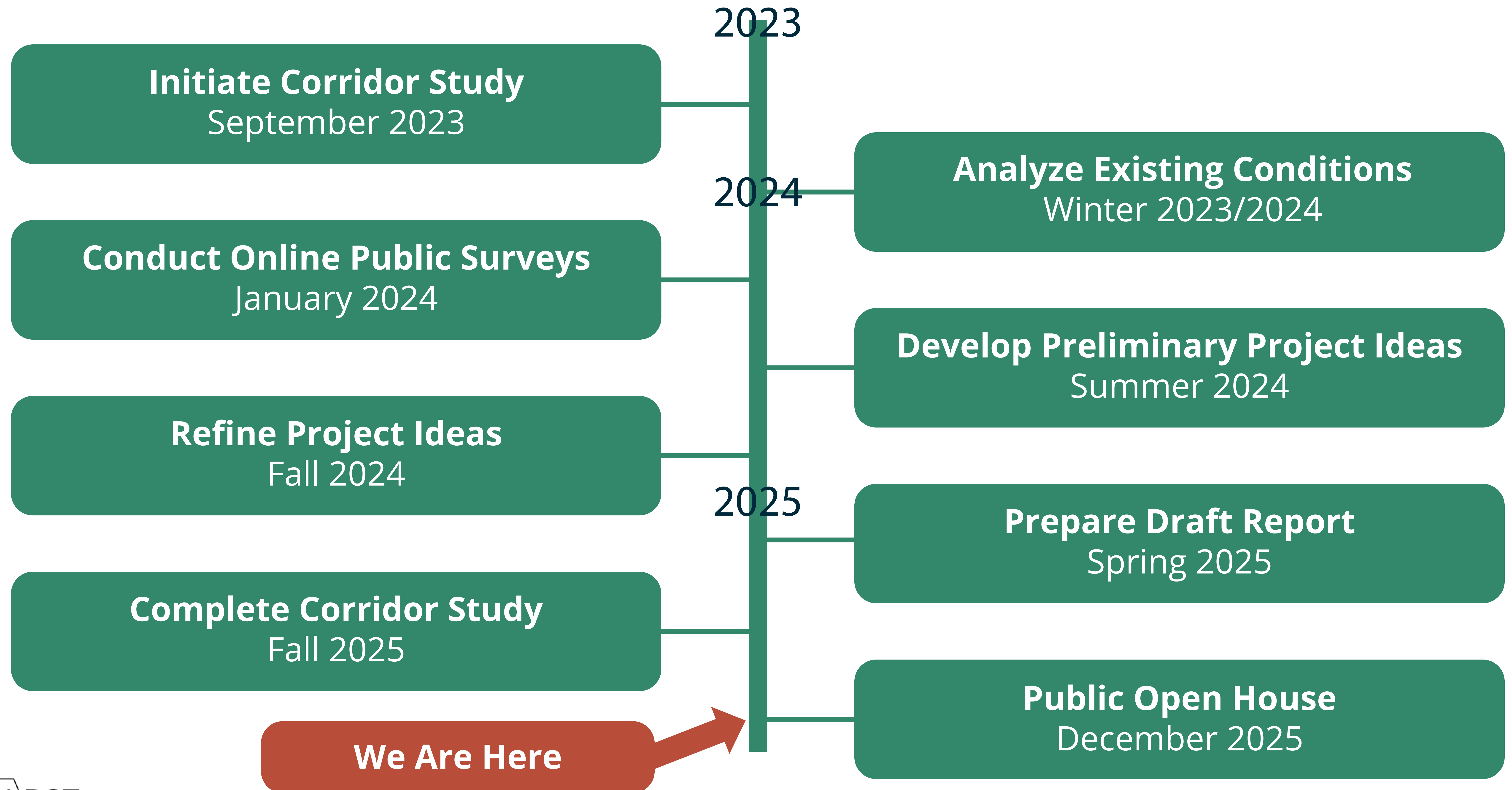
- Achieve Level of Service (LOS) D or better (mainline US 61)
- Reduce high-severity crashes (mainline US 61)
- Reduce conflict points by removing at-grade median crossovers
- Provide sufficient access to/from US 61 and limit adverse travel
- Consider overall costs
- Minimize adverse impacts (utilities, environmental resources, private properties)



STUDY LIMITS: US 61 FROM HWY A TO LINCOLN COUNTY LINE

STUDY SCHEDULE

US 61 CORRIDOR STUDY

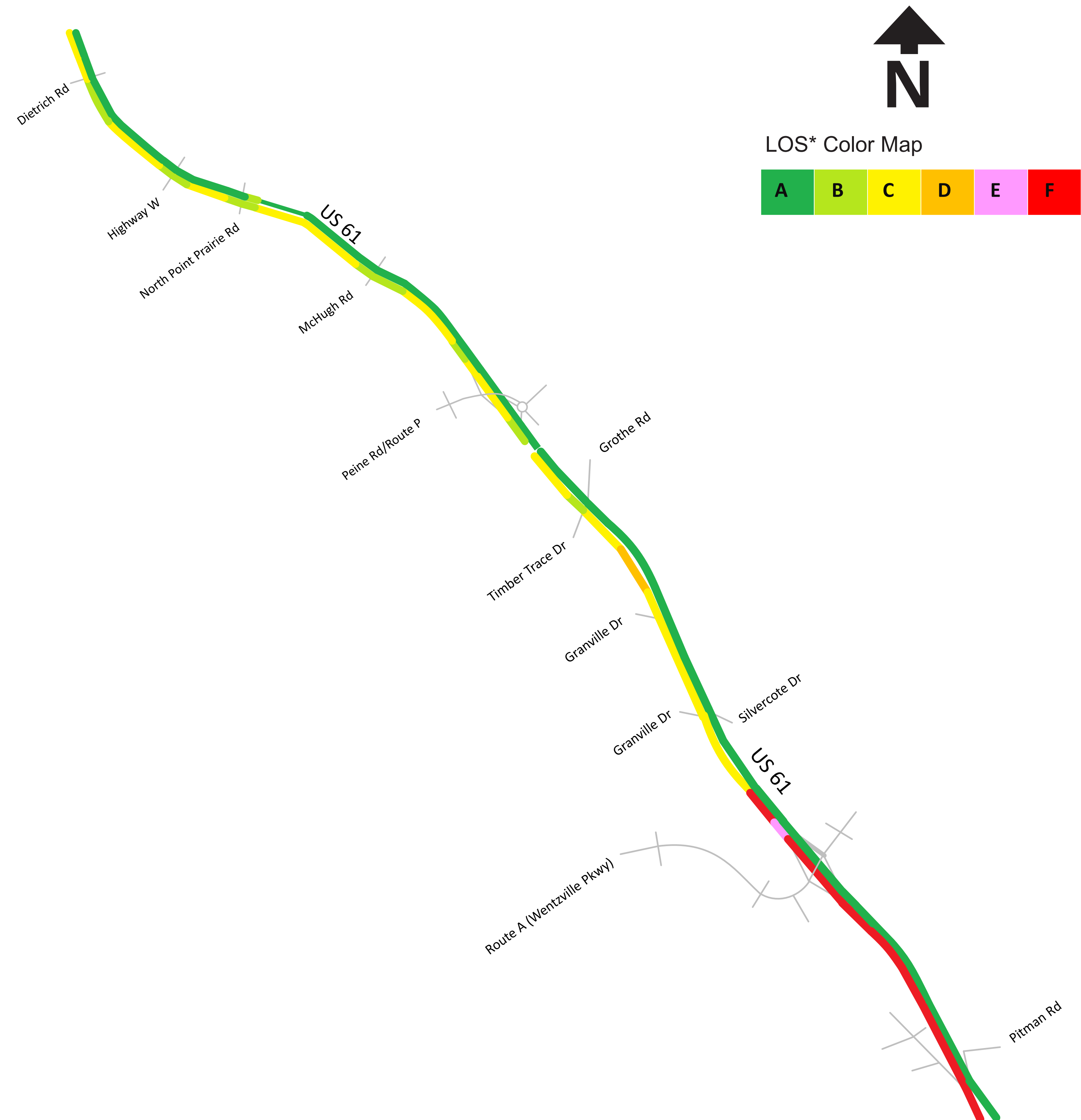


EXISTING ISSUES - CONGESTION

US 61 CORRIDOR STUDY

CONGESTION:

- Heavy mainline US 61 traffic
 - Southbound in the AM
 - Northbound in the PM
- Inability to turn onto US 61 from intersecting roads
- Congestion at the Wentzville Pkwy/Hwy A interchange
 - Limited left-turn lane capacity on bridge over US 61
 - Closely-spaced intersections
 - Northbound off-ramp congestion



ENGAGEMENT

US 61 CORRIDOR STUDY

ONLINE PUBLIC SURVEY:

- 3,478 Responses

COMMUNITY ADVISORY GROUP:

- Federal agencies, regional agencies, local municipalities, emergency response agencies, other stakeholders

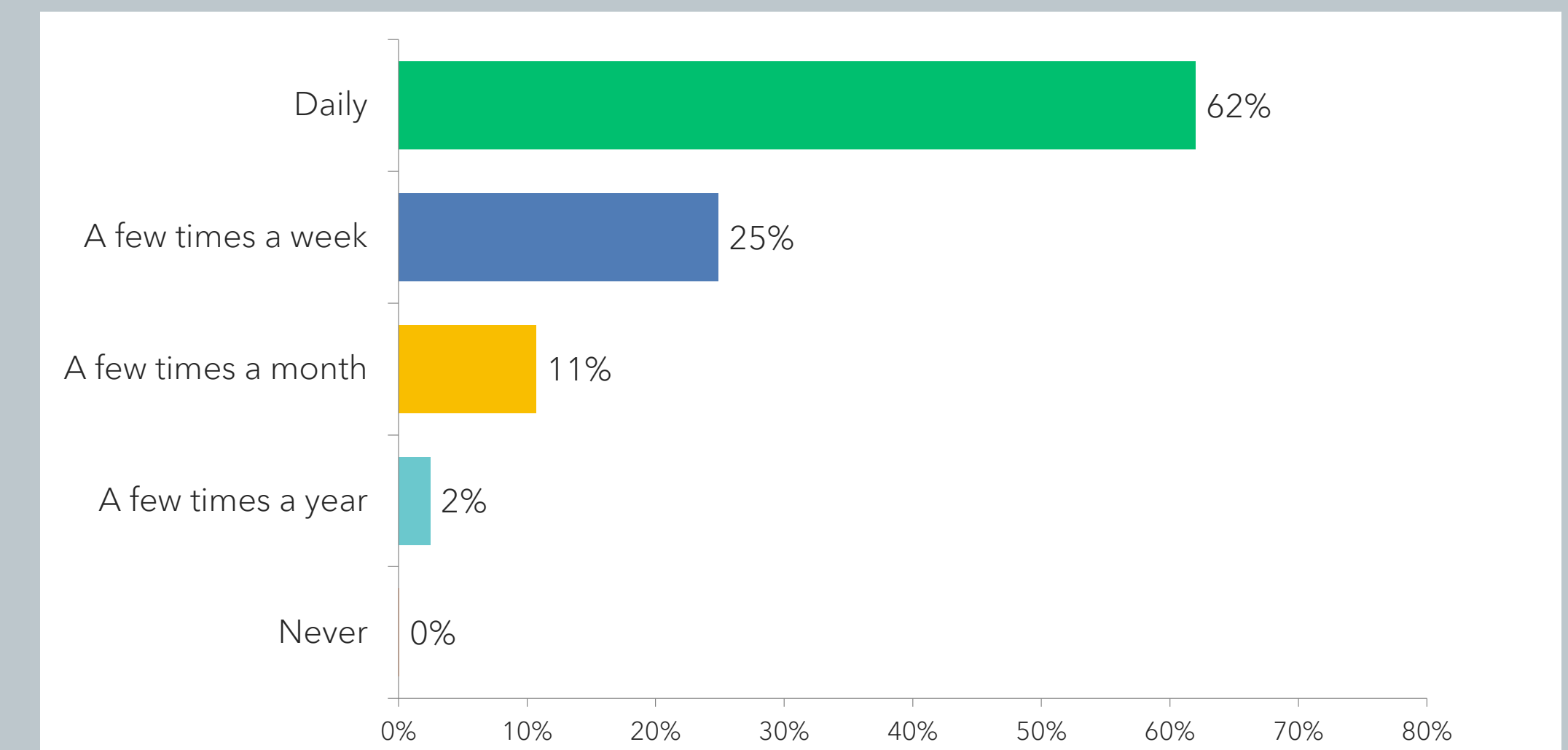
PURPOSE:

- Be the voice of respective communities/agencies
- Provide input to the study

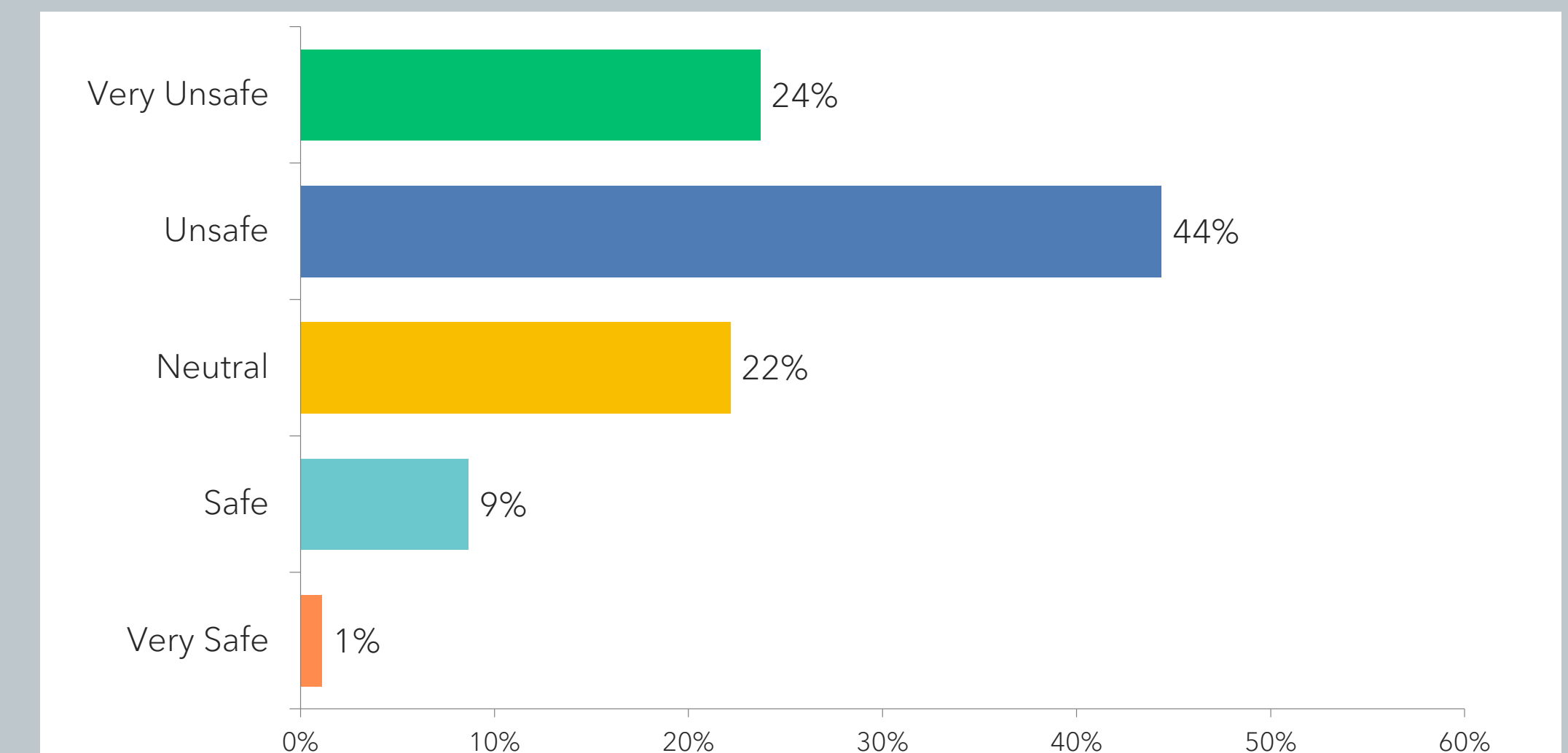
CAG MEETINGS:

- Meeting #1 - February 2024
- Meeting #2 - July 2024
- Meeting #3 - March 2025

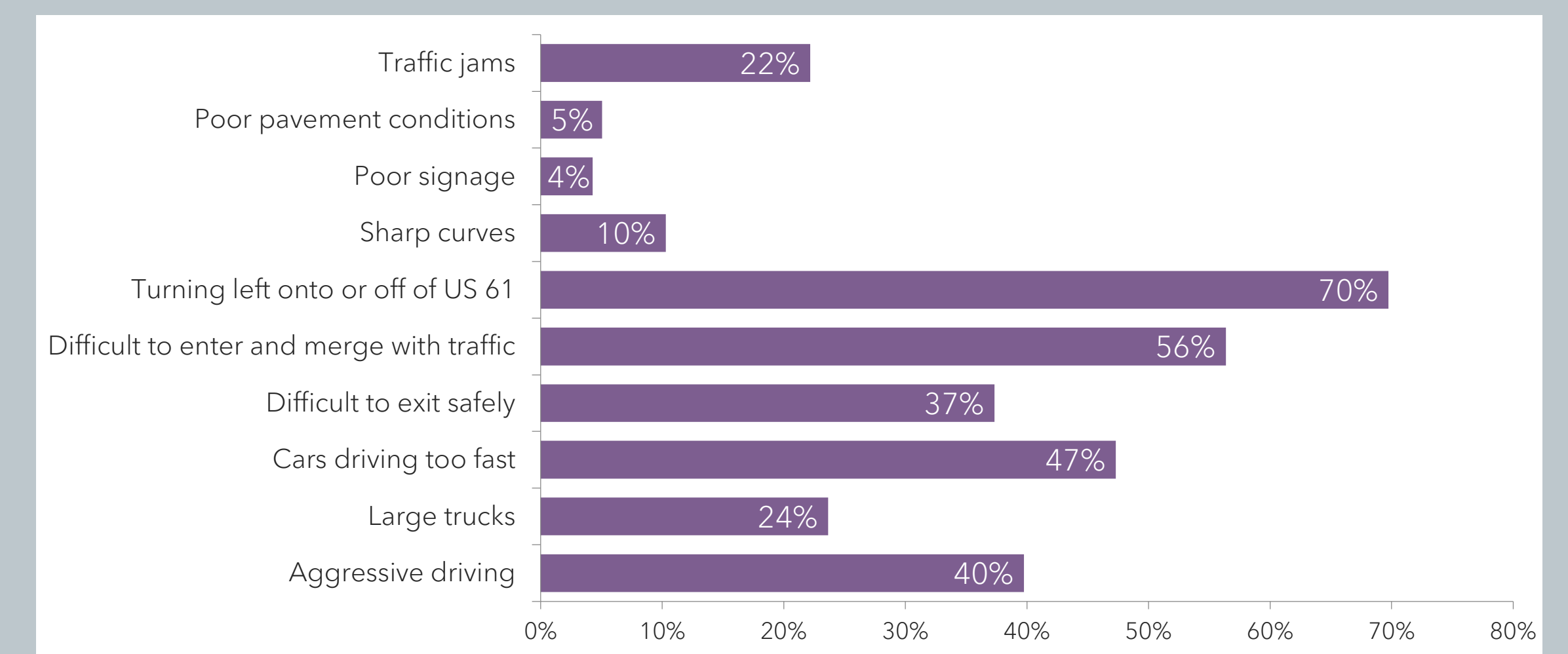
HOW OFTEN DO YOU TRAVEL ON US 61?



HOW SAFE DO YOU FEEL TRAVELING ON US 61?



WHAT DO YOU SEE AS PROBLEMS ON US 61?



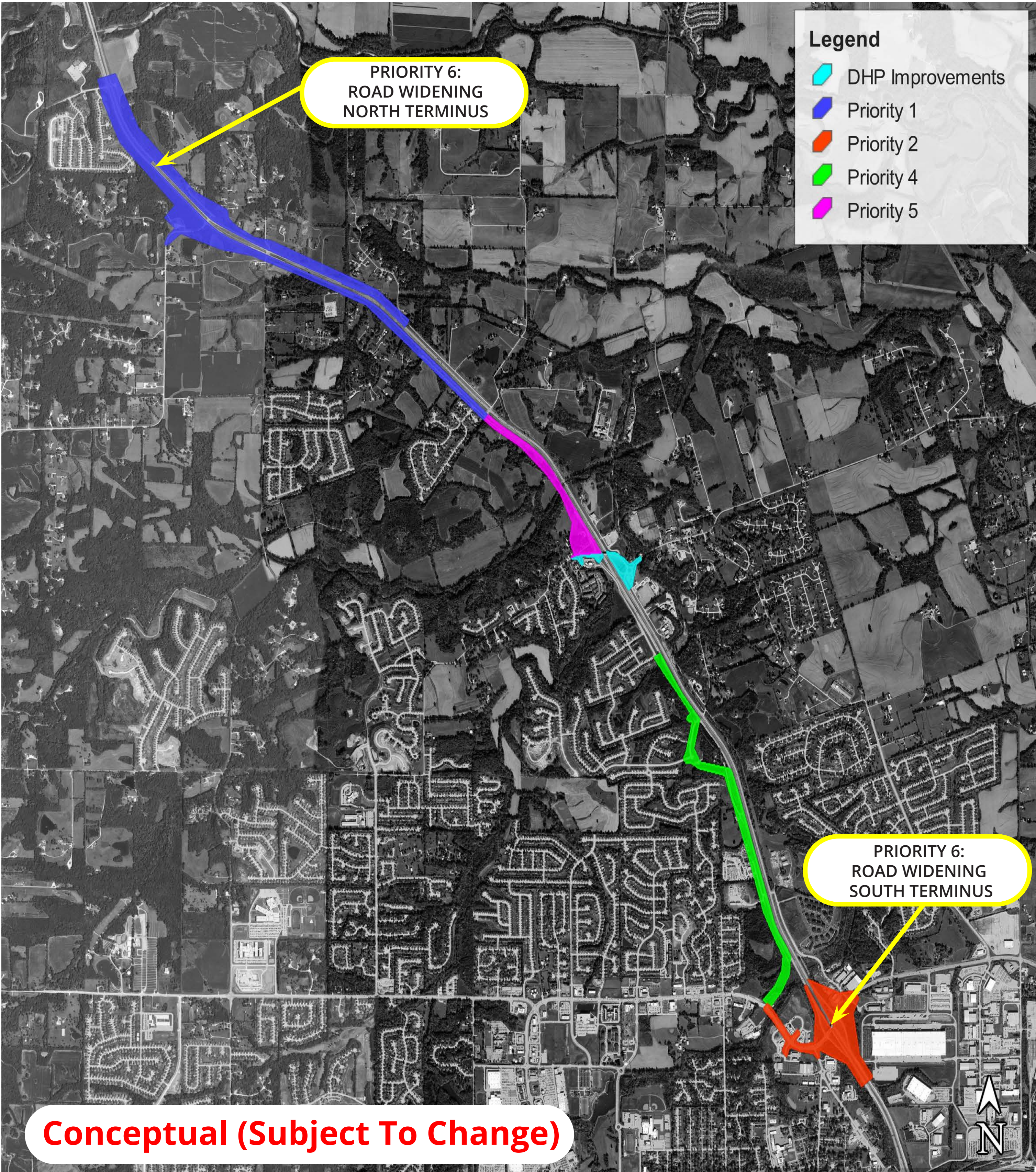
RECOMMENDATIONS

US 61 CORRIDOR STUDY

Priority	Description	Total Cost
Funded		
1	Hwy W Interchange FUNDED	\$40,000,000 ¹
Unfunded		
2	Single Point Urban Interchange Wentzville Pkwy/Hwy A	\$36,000,000 ²
3	US 61 Mainline Geometric Improvements ³	\$9,000,000 ²
4	West Outer Rd (Peine Rd to Wentzville Pkwy)	\$36,000,000 ²
5	West Outer Rd (Granville Dr to Peine Rd)	\$11,000,000 ²
6	US 61 Mainline Widening	\$30,000,000 ²
--	David Hoekel Pkwy Complementary Improvements ⁴	\$1,000,000 ²
TOTAL	--	\$163,000,000

¹ 2025 dollars; ² 2024 dollars; ³ Various locations throughout the corridor;

⁴ Triggered by David Hoekel Pkwy completion

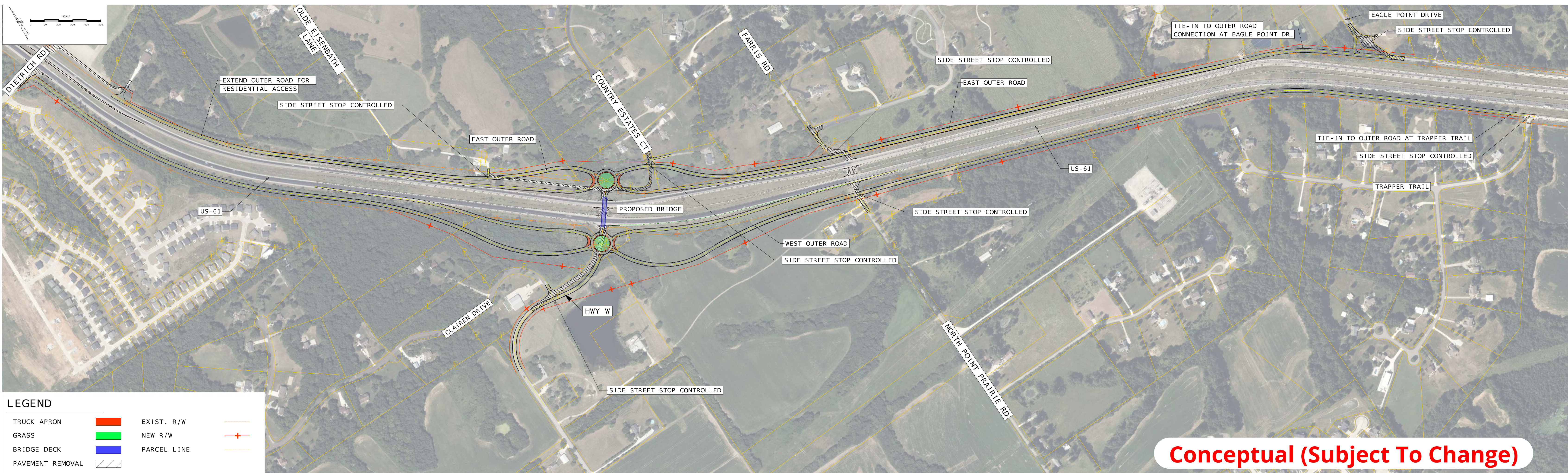


PRIORITY #1

US 61 CORRIDOR STUDY

HWY W INTERCHANGE

- Roundabout interchange recommended with outer road connections
- Minimizes severe crashes
- Removes 4 at-grade crossover intersections
 - Dietrich Ln, Hwy W, Farris Rd/Point Prairie Rd, McHugh Rd (not shown)
- **Estimated Cost: \$40,000,000**

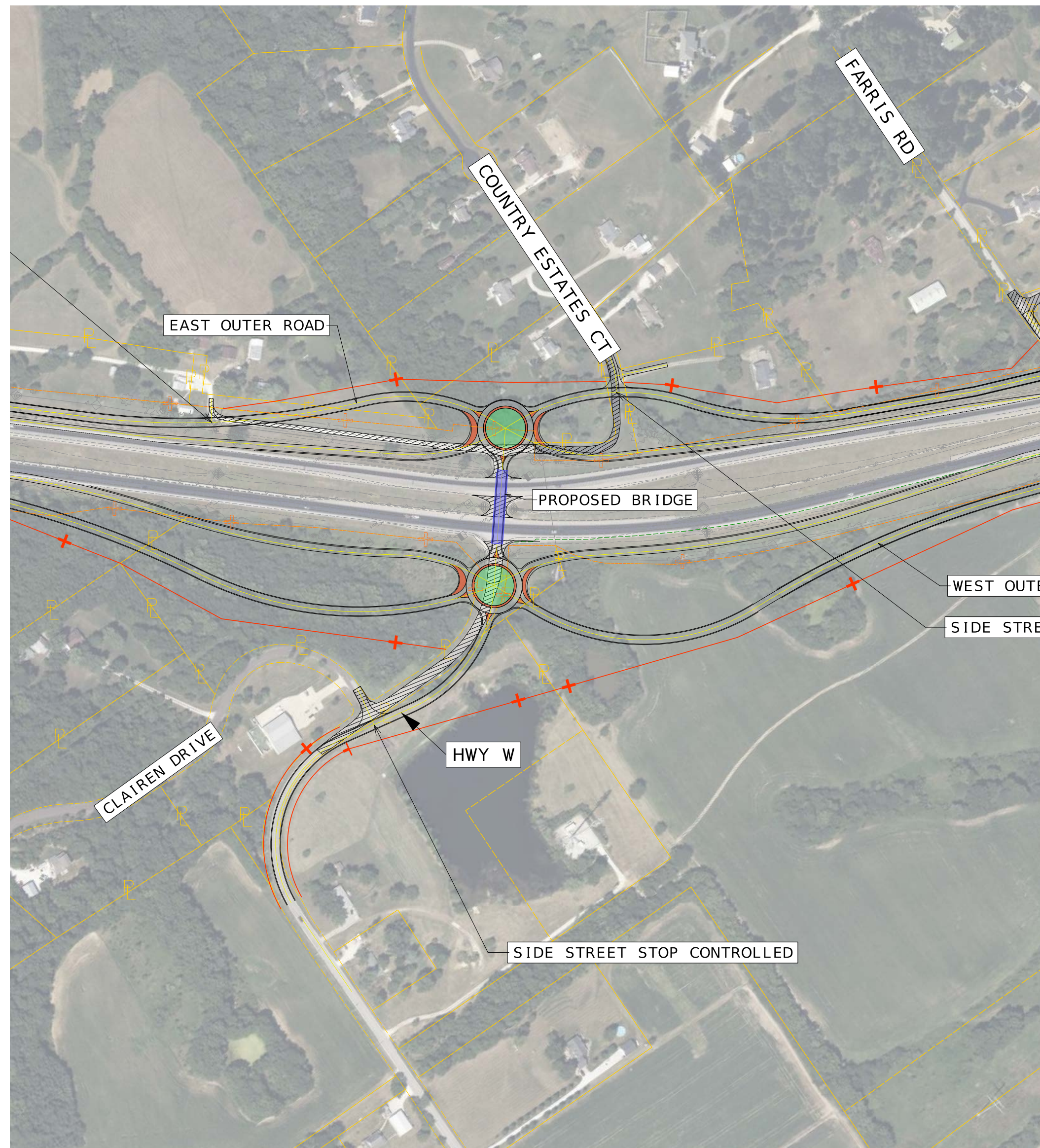


PRIORITY #1 OPTIONS EVALUATED

HWY W INTERCHANGE OPTIONS

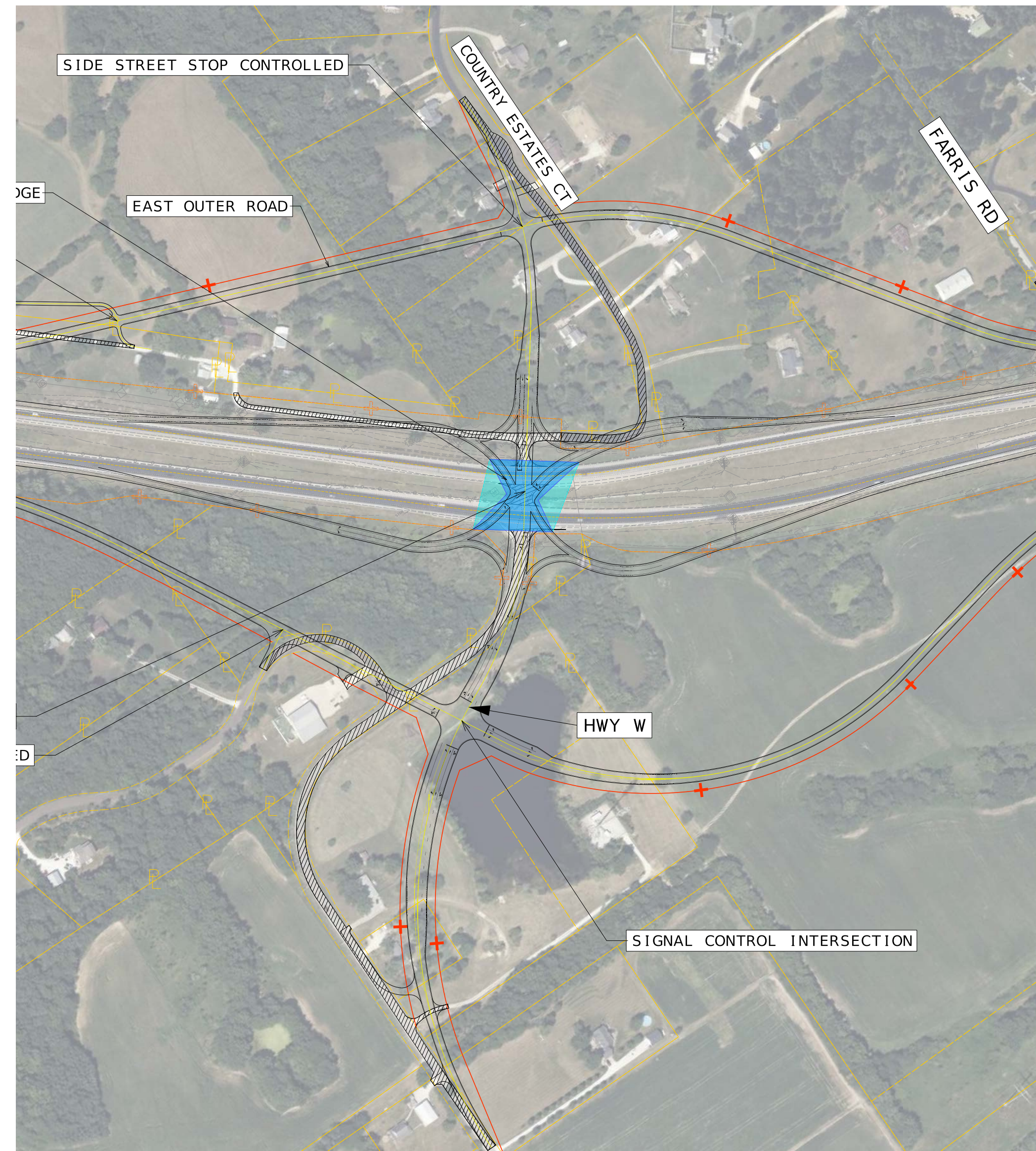
US 61
CORRIDOR STUDY

Conceptual (Subject To Change)



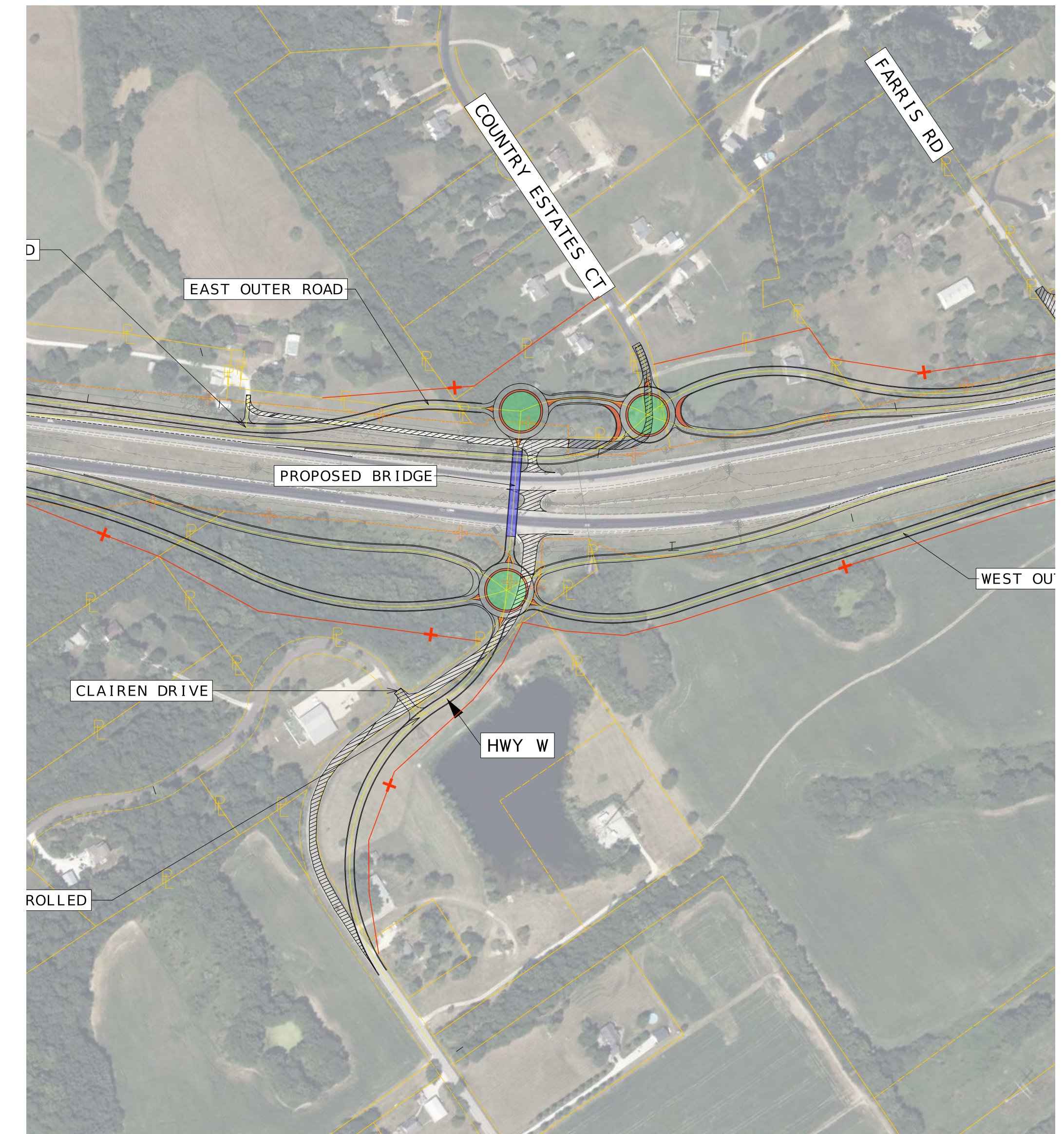
RECOMMENDED: ROUNDBABOUTS

- 2 single-lane roundabouts
- Outer road network



SINGLE POINT URBAN INTERCHANGE

- Outer road network
- Significant right-of-way impacts



HYBRID DUMBBELL & BUTTONHOOK

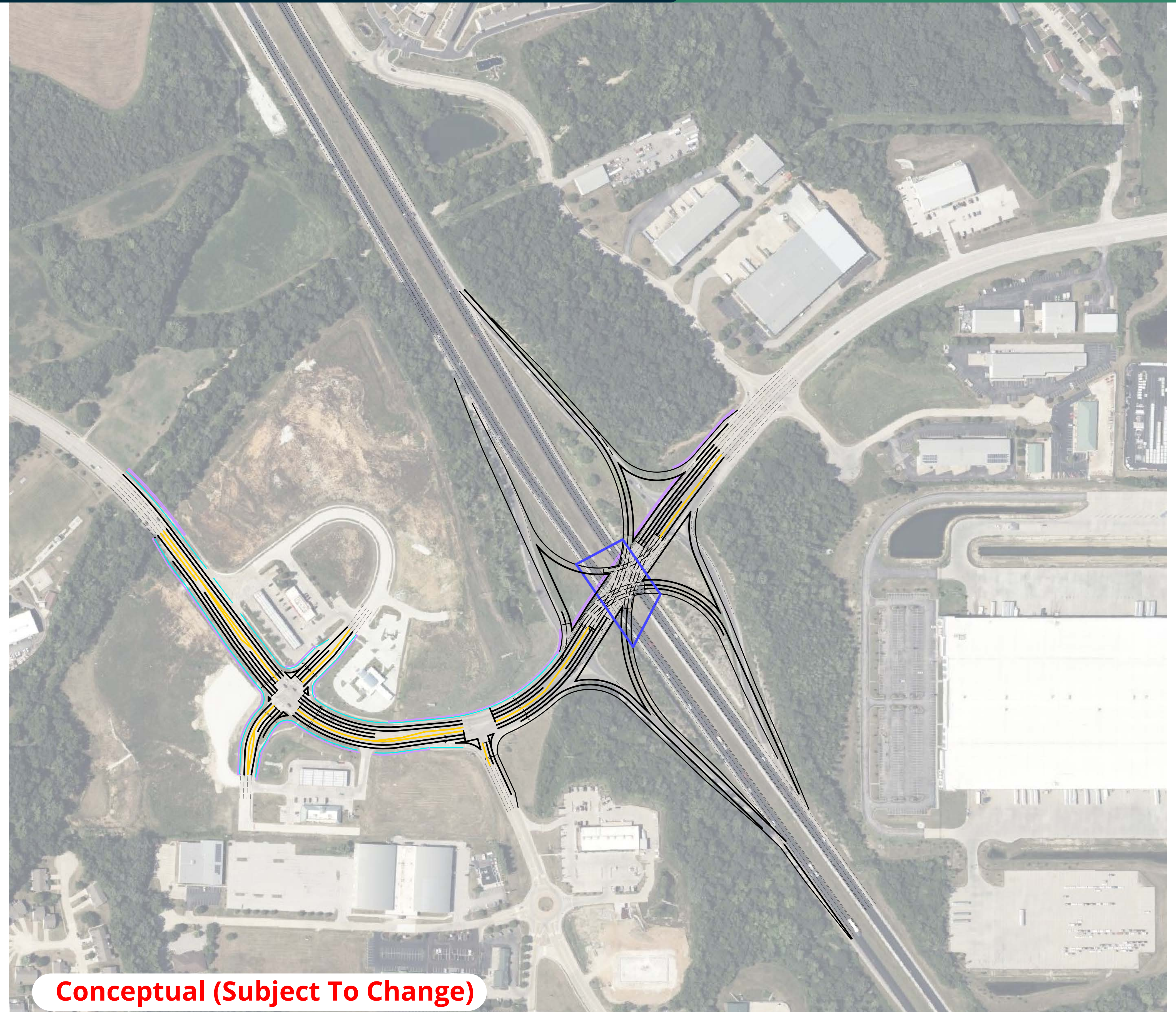
- 3 single-lane roundabouts
- Outer road network

PRIORITY #2

US 61 CORRIDOR STUDY

WENTZVILLE PKWY/ HWY A INTERCHANGE

- Single Point Urban Interchange (SPUI) recommended
- Maximizes separation from adjacent signals
- Significantly reduces traffic congestion
- **Estimated Cost: \$36,000,000**



Conceptual (Subject To Change)

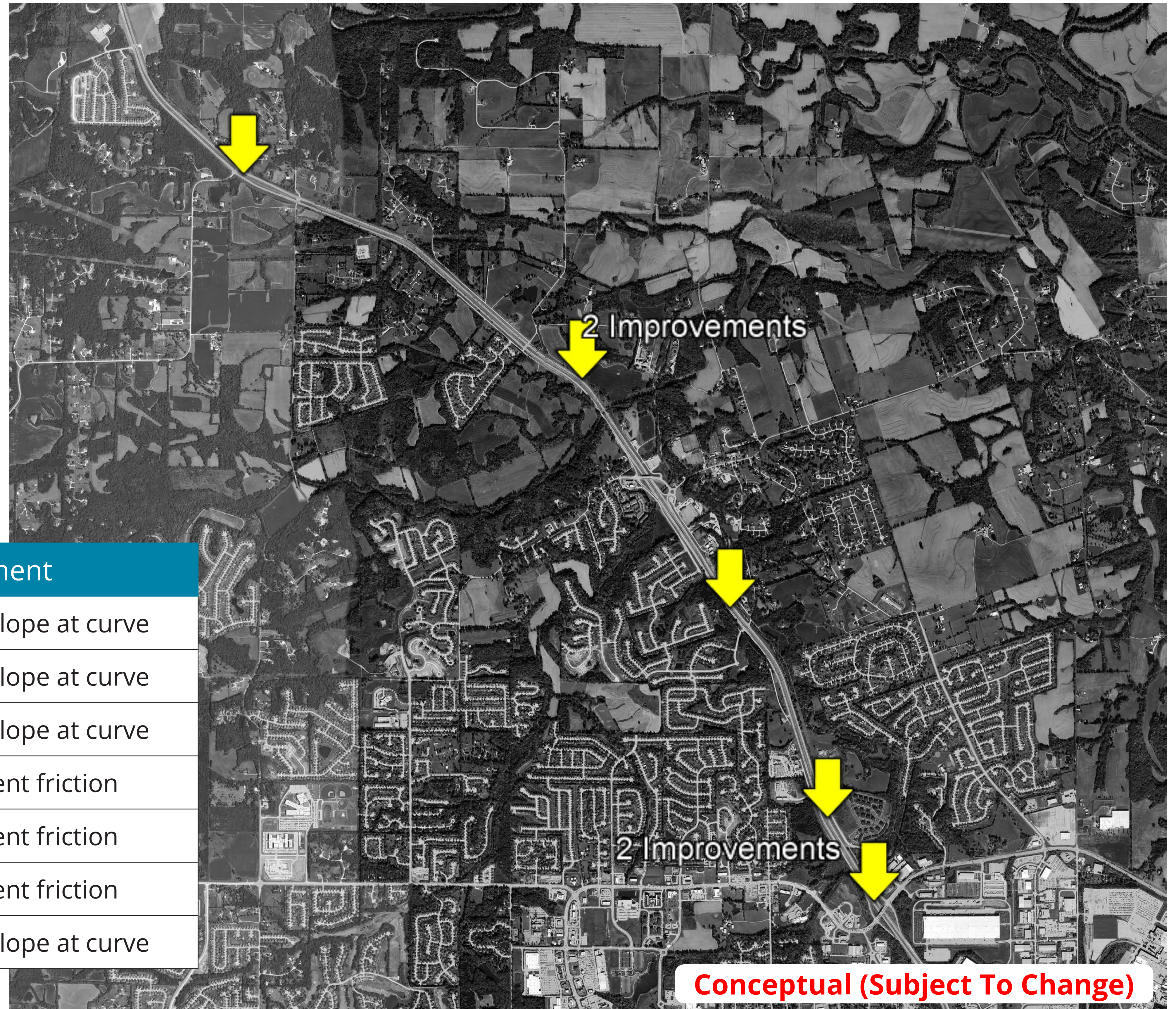
PRIORITY #3

US 61 CORRIDOR STUDY

US 61 MAINLINE GEOMETRIC (CURVE) IMPROVEMENTS

- Increases pavement friction and improves roadway cross slopes at various curve locations
- Reduces crashes associated with horizontal curves
- **Estimated Cost: \$9,000,000**

Location	Improvement
Southbound south of Hwy W	Improve roadway slope at curve
Southbound north of McCoy Creek	Improve roadway slope at curve
Northbound north of McCoy Creek	Improve roadway slope at curve
Southbound north of Timber Trace Dr	Increase pavement friction
Northbound south of Silvercote Dr	Increase pavement friction
Southbound at Wentzville Pkwy	Increase pavement friction
Northbound at Wentzville Pkwy	Improve roadway slope at curve

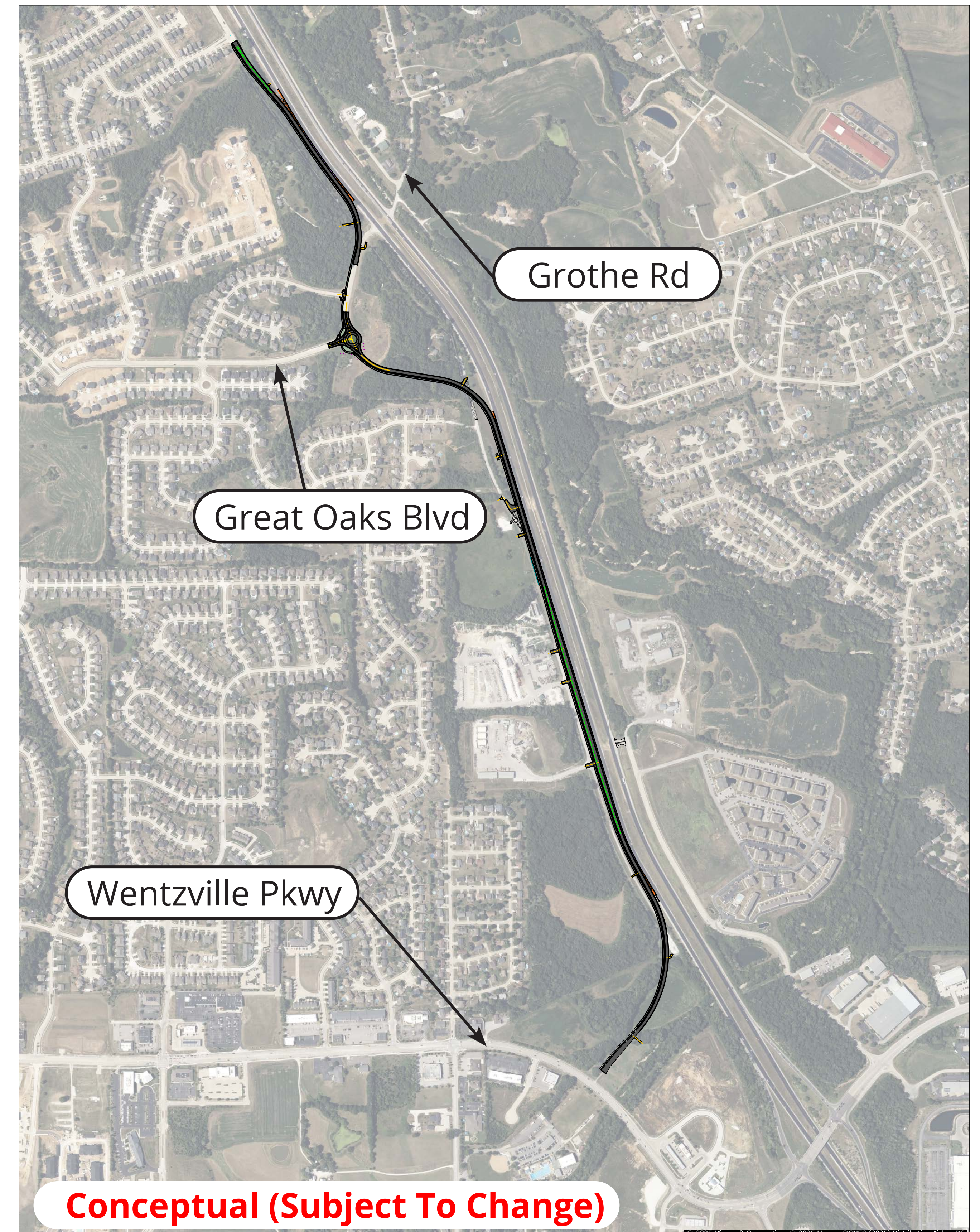


PRIORITY #4

US 61 CORRIDOR STUDY

WEST OUTER ROAD - PEINE RD TO WENTZVILLE PKWY

- Part of a continuous west outer road (in combination with Priority #5)
- Enables closure of 3 right-in-right-out intersections on southbound US 61
- Project initiated by the City of Wentzville
- Provides local connectivity and US 61 redundancy
- **Estimated Cost: \$36,000,000**

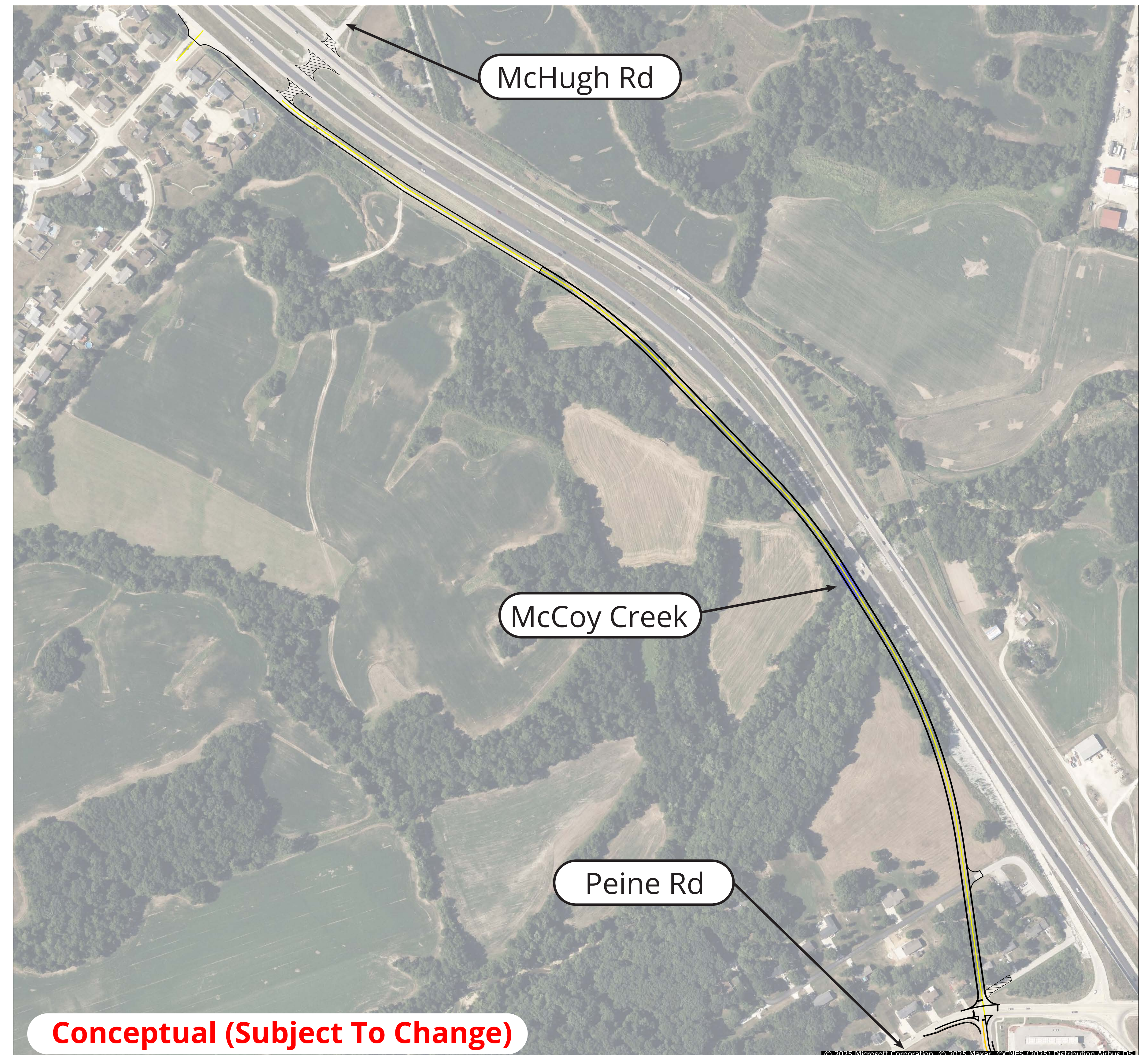


PRIORITY #5

US 61 CORRIDOR STUDY

WEST OUTER ROAD - GRANVILLE DR TO PEINE RD

- Connects Granville Dr and Peine Rd on west side of US 61
- Part of a continuous west outer road (in combination with Priority #4)
- Provides local connectivity and US 61 redundancy
- **Estimated Cost:**
\$11,000,000

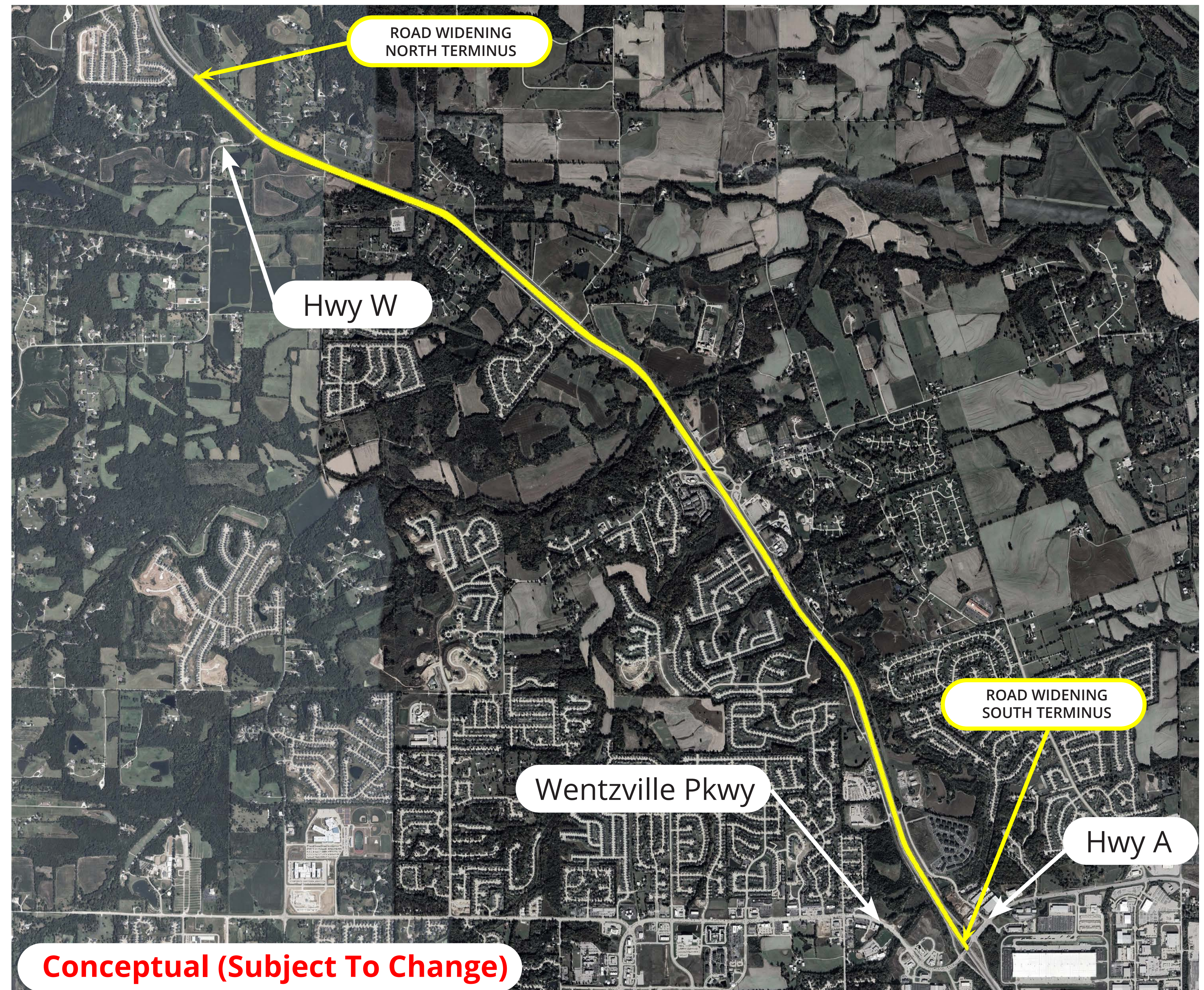


PRIORITY #6

US 61 CORRIDOR STUDY

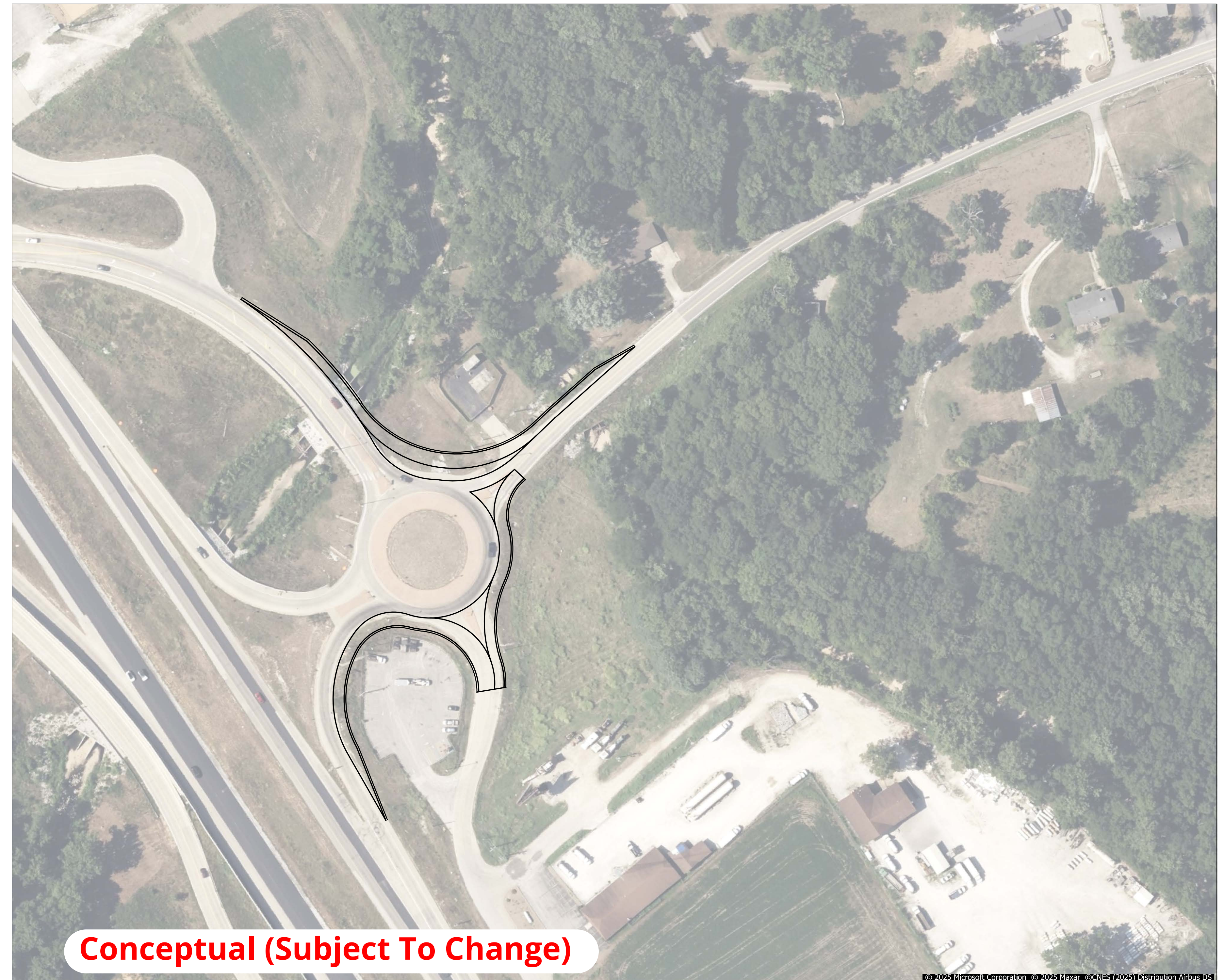
US 61 MAINLINE WIDENING

- Widens from 4 to 6 lanes from Wentzville Pkwy/Hwy A to Hwy W
- Widens from 6 to 8 lanes between Wentzville Pkwy/Hwy A and I-70
- Limits future congestion due to planned growth
- Enables Level of Service (LOS D) or better for the 2050 horizon year peak periods
- Improves safety
- **Estimated Cost: \$30,000,000**



DAVID HOEKEL PARKWAY (DHP) INTERCHANGE IMPROVEMENTS

- Triggered by completion of David Hoekel Parkway and planned growth
- Necessary in the future due to increased traffic
- Adds traffic signals at DHP/Peine Loop Road and at DHP/US 61 Southbound Ramps
- Improves roundabout at Hwy P
- Maintains acceptable traffic flows in the future
- **Estimated Cost: \$1,000,000**



Conceptual (Subject To Change)

AVAILABLE FUNDING/TIMELINE

US 61 CORRIDOR STUDY

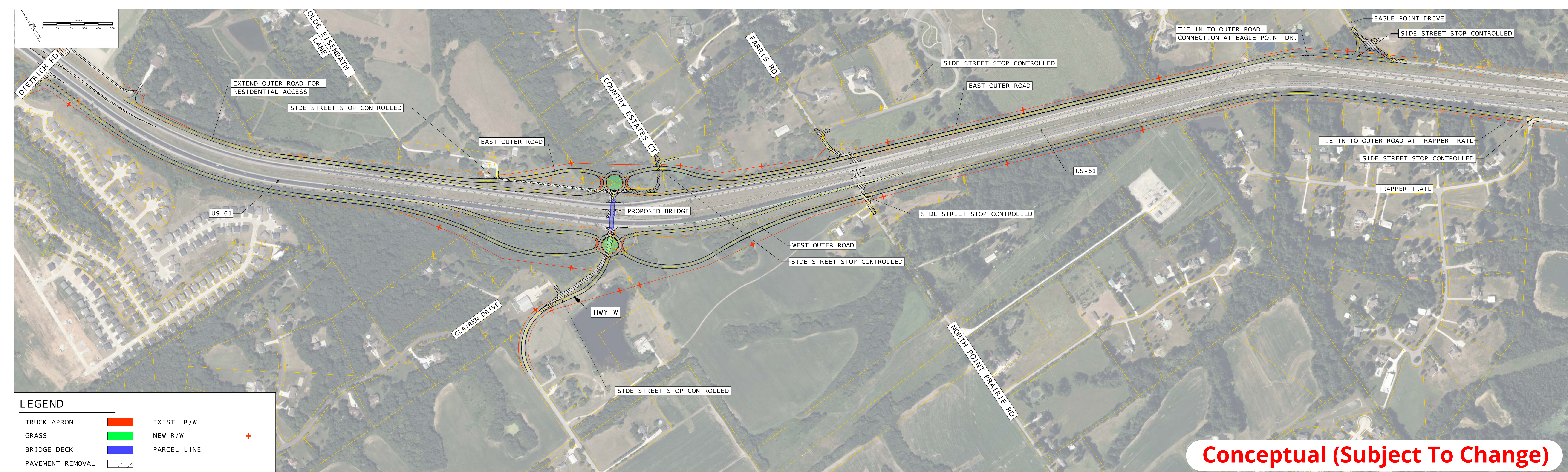
ONLY HWY W INTERCHANGE IS FUNDED

- Fiscal Year 26 (7/1/25 to 6/30/26)

- \$3M engineering
- \$5M right-of-way acquisition

- Fiscal Year 27 (7/1/26 to 6/30/27)

- \$39M construction and engineering
- Construction begins in 2028



FREQUENTLY ASKED QUESTIONS

US 61 CORRIDOR STUDY

IS ANYTHING FUNDED FOR CONSTRUCTION?

- Approximately \$40 million has been allocated for construction of corridor improvements starting in 2028.
- Additional needed corridor improvements are unfunded but will be prioritized on MoDOT's High-Priority Unfunded Needs List utilizing the traditional planning process.

WHAT WILL THE FIRST IMPROVEMENTS LOOK LIKE?

- The recommended first improvement is construction of a grade-separated interchange on Highway W at US 61.
- The current concept is a “dogbone” style configuration with roundabouts at each end of the future bridge, similar to the I-64/Prospect Rd Interchange in Lake St. Louis.
- Outer roads along both sides of US 61 between Dietrich Road and McHugh Road are recommended, enabling closure of the remaining at-grade median crossovers in St. Charles County.

WILL MoDOT NEED ADDITIONAL LAND FOR THE IMPROVEMENTS?

- Construction of the outer roads and interchange will require several right-of-way purchases.
- Acquisition details have not yet been identified.

WHAT ARE YOUR PRIORITY PROJECTS?

US 61 CORRIDOR STUDY

- Of the remaining unfunded projects, please indicate your **TOP 2** priorities by placing stickers in the associated boxes

1st Choice

2nd Choice

SINGLE POINT URBAN INTERCHANGE WENTZVILLE PKWY/HWY A

US 61 MAINLINE GEOMETRIC IMPROVEMENTS

WEST OUTER ROAD PEINE RD TO WENTZVILLE PKWY

WEST OUTER ROAD GRANVILLE DR TO PEINE RD

US 61 MAINLINE WIDENING