

A photograph of a two-lane road in Osage County, Missouri. The road has a double yellow line down the center and white lines on the edges. On the left side of the road, there is a grassy area with a white house and a red barn in the background. On the right side, there is a grassy area with a school building and a parking lot. The sky is overcast.

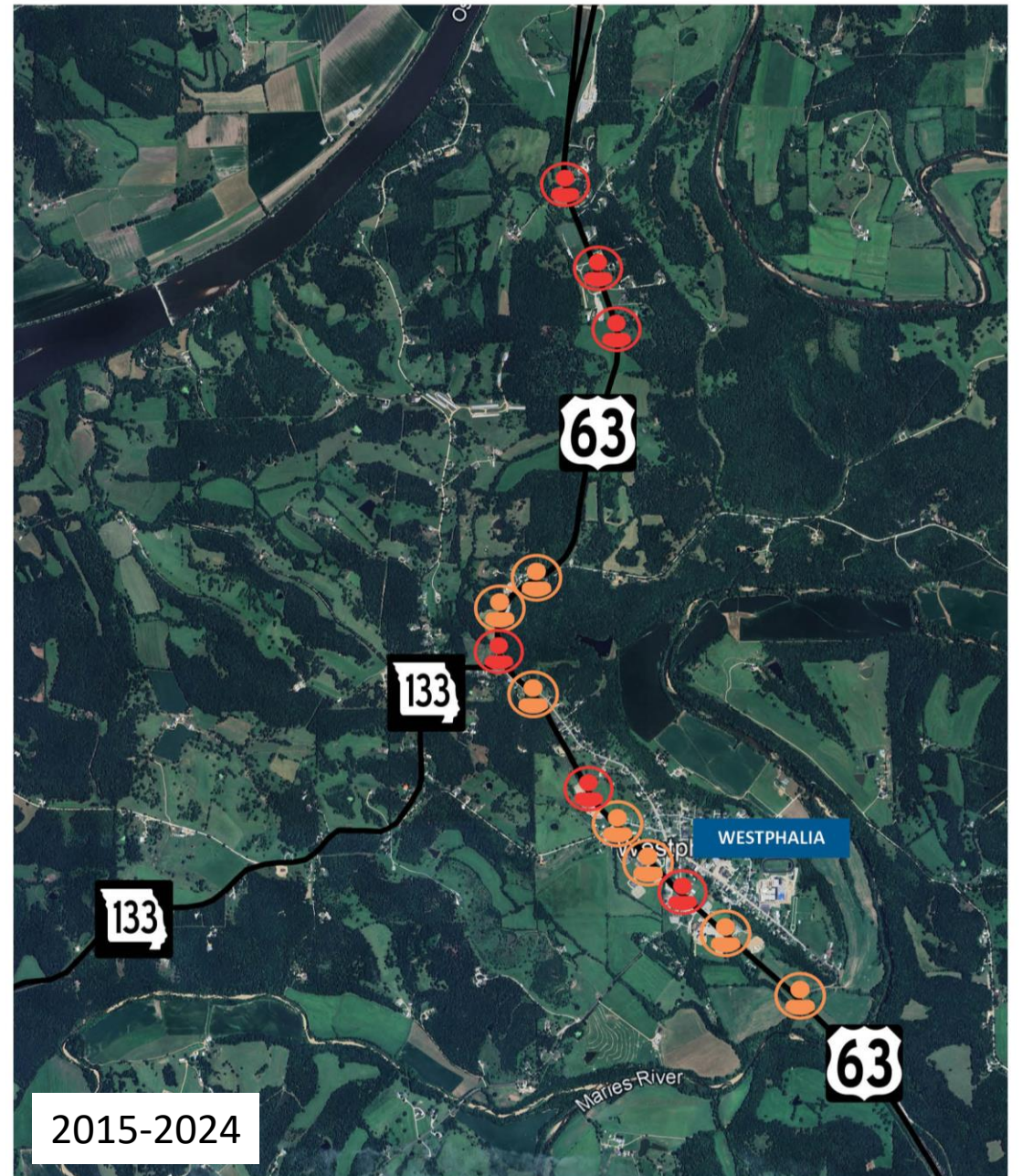
Osage County U.S. Route 63

Randy Aulbur
ASSISTANT DISTRICT ENGINEER

THE NEED:

Early 2000s:

- *Regional planning partners approached MoDOT with a need to widen and realign U.S. Route 63 through mid-Missouri, based on usage and crash data.*



WHERE WE STARTED

2006:

Local planning partners participated in the rural major projects group and ranked U.S. Route 63 from U.S. Route 50 in Osage County to Rolla (Phelps County) second out of 40 projects for future transportation needs.



ENVIRONMENTAL IMPACT STATEMENT

2009:

- *Environmental Impact Statement (EIS) completed for the 47-mile section of U.S. Route 63 between U.S. Route 50 and Rolla.*
- *Preferred alternative identified, divided into segments.*

Route 63

Final Environmental Impact Statement



Federal Highway Administration
Missouri Department of Transportation
September 2009

ENVIRONMENTAL IMPACT STATEMENT

Public Involvement Opportunities:

- **Nov. 14 & 16, 2006** – *Initial public meetings.*
- **May 1 & 2, 2007** – *Second round of public meetings.*
- **Oct. 25 & 30, 2007** – *Reasonable Alternatives public meetings.*
- **April 10, 2008** – *Four locations emerging alternatives public meetings.*



November 2006



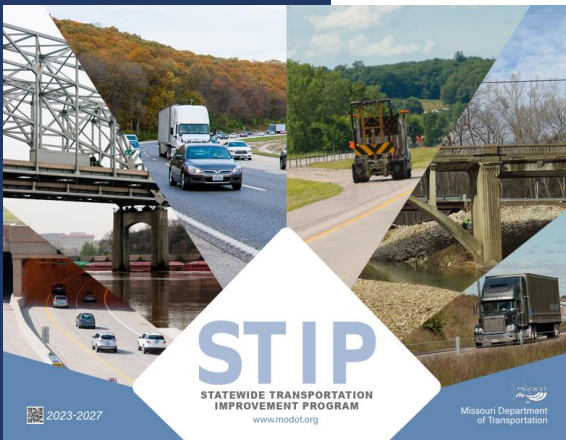
May 2007

FUNDING THE PROJECT



2019-2022

Segment of U.S. Route 63 from U.S. Route 50 in Osage County to the Maries River on Tier II of MoDOT's High-Priority Unfunded Needs list



2023

As funding became available, the project to realign and widen this segment was moved onto the Statewide Transportation Improvement Program (STIP) for 2023-2027.

RE-EVALUATION

Public Involvement Opportunities:

- **August 2022** – *Re-evaluation public comment period.*
- **October 2022** – *Property-owner requested meeting.*

June 2025

A re-evaluation of the EIS and preferred alternative was completed and approved by the Federal Highway Administration .

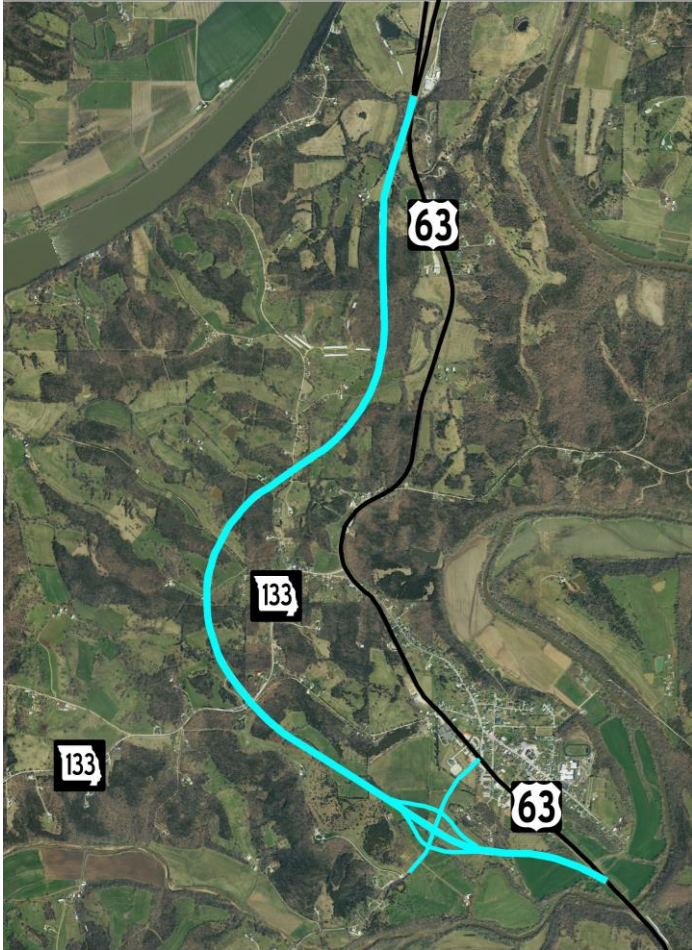
NEPA Re-evaluation of the
Missouri Route 63 Environmental Impact
Statement
(Job No. CD0007)
From South of Route 50 in Osage County to
North of Rolla in Phelps County



June 2025

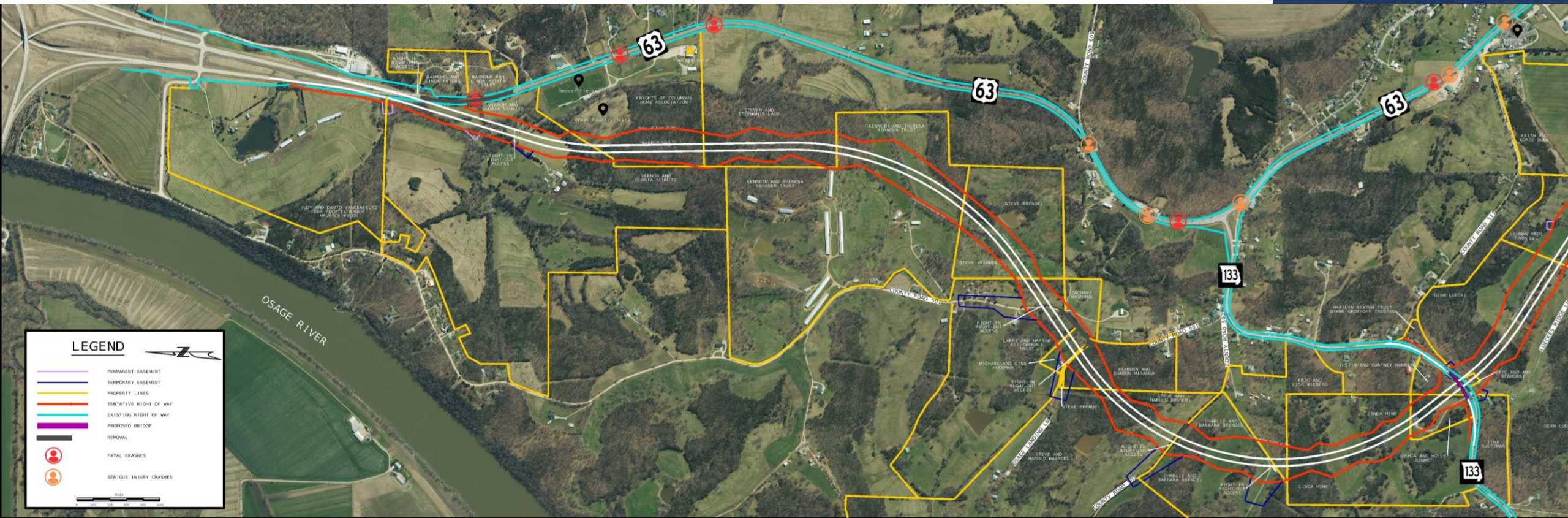
Submitted Pursuant to 42 U.S.C. 4332(2)(c), 49 U.S.C. 303
By the U.S. Department of Transportation Federal Highway Administration
and the Missouri Department of Transportation

PRELIMINARY DESIGN



- Four-lane divided highway.
- West of current alignment.
- New interchange to Westphalia.
- Overpass bridge on Route 133.

PRELIMINARY DESIGN - NORTH



PRELIMINARY DESIGN – SOUTH



PUBLIC HEARING



- Aug. 21, 2025, in Westphalia
- 240+ attendees
- Corridor maps and traffic safety data presented
- Staff from Design, Right of Way, Environmental, Traffic and District Leadership in attendance to provide information, answer questions and receive feedback



PUBLIC COMMENT PERIOD

Aug. 6 – Sept. 4, 2025

- During the public comment period, 274 comments were received via mail, email, webform and in writing at the hearing.



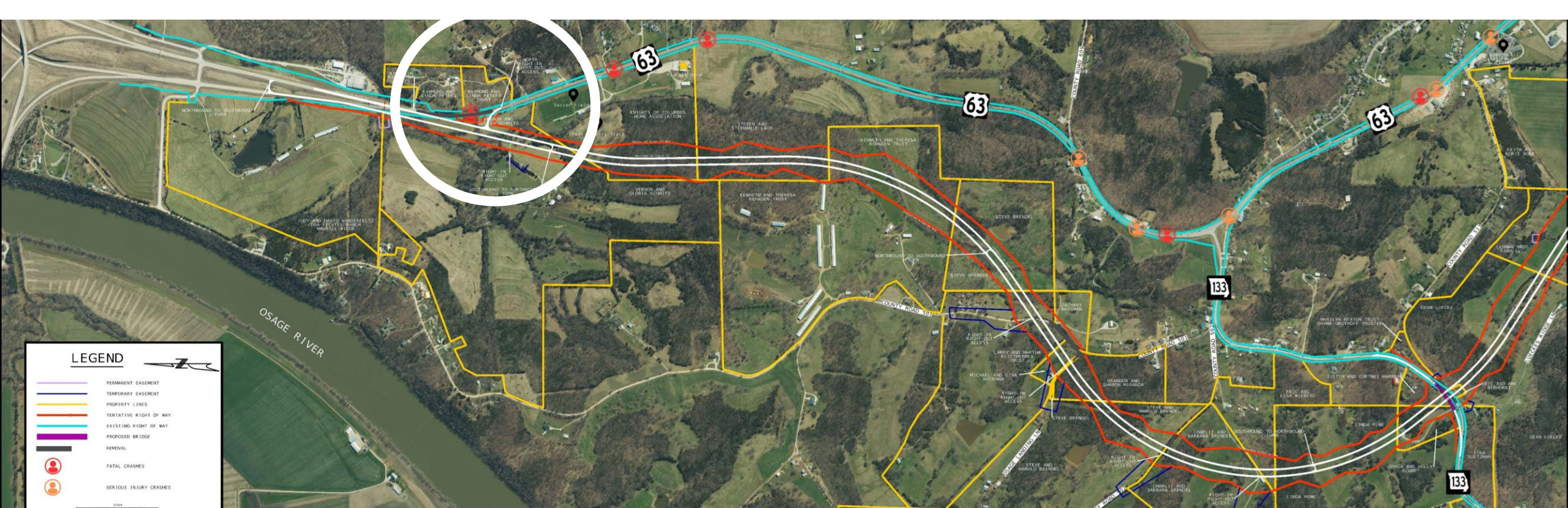
WHAT WE HEARD

- Access.
- Interchange location.
- Emergency service response times.
- Truck traffic.
- Alignment.
- Right of Way acquisition.
- Why this section first?
- Tie-in to the climbing lanes section to the south.



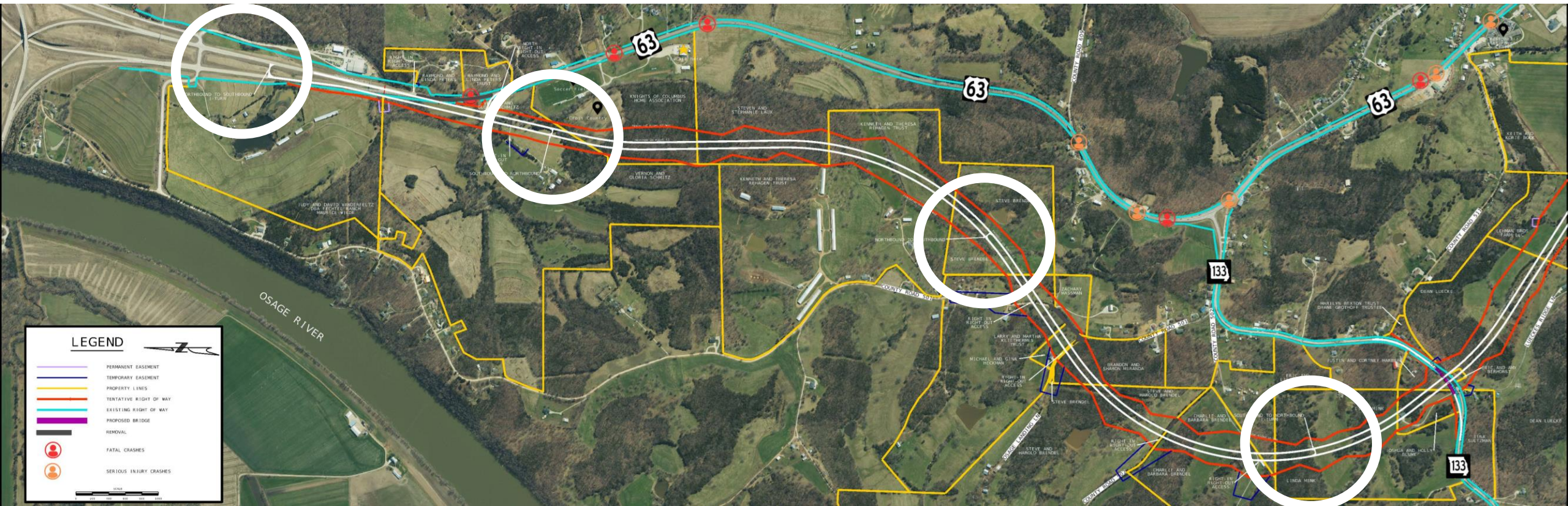
CHANGES TO PRELIMINARY DESIGN

- Including a connection at the north end of the project, near the soccer fields.



CHANGES TO PRELIMINARY DESIGN

- Incorporating additional access points along the new alignment via J-turns.



CHANGES TO PRELIMINARY DESIGN

- Tying into the climbing lanes at the south end of the project.



WHAT'S NEXT:

Today – Location Design approval request to Missouri Highways and Transportation Commission.

Spring/Summer 2026 – Right of Way acquisition begins.

Fall 2027 – Bids accepted, contract award, and notice to proceed given.

End of 2029 – Project complete.

RECOMMENDATION

We recommend that the Commission approve the location and design of the proposed project as presented at the public hearing with the addition of a north access to the existing U.S. Route 63, J-turn access at the north and mid-section of the new alignment, and extension of the southbound dual lane to the existing climbing lane south of the Maries River.