

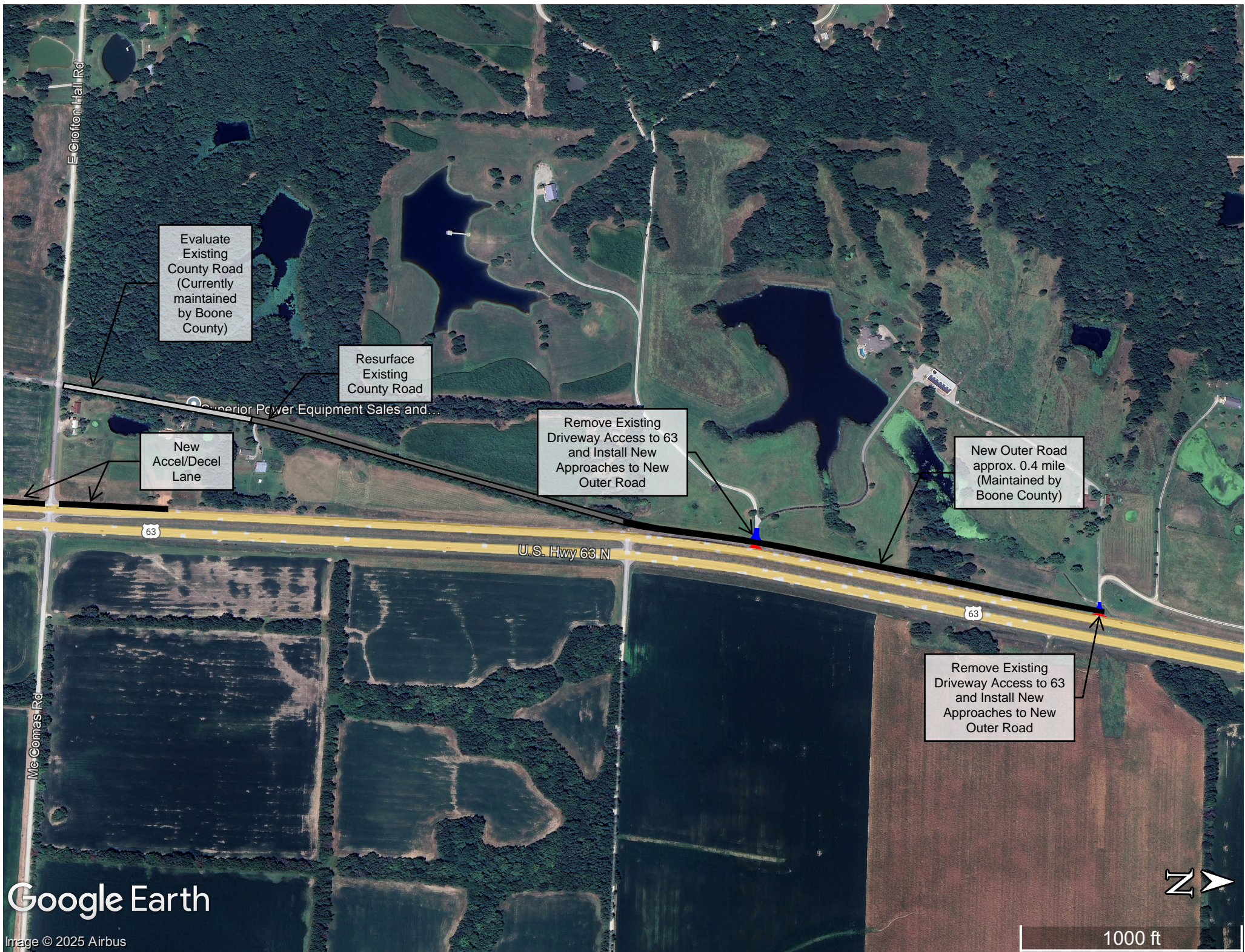


Install New Accel/Decel
Lanes on 63 at Roy
Barnes

Remove Existing
Crossover Access at
CC/63 Intersection

Install New Accel/Decel
Lanes on 63 at CC

Add
Lighting



E Crofton Hall Rd

Evaluate
Existing
County Road
(Currently
maintained
by Boone
County)

Resurface
Existing
County Road

New
Accel/Decel
Lane

Remove Existing
Driveway Access to 63
and Install New
Approaches to New
Outer Road

New Outer Road
approx. 0.4 mile
(Maintained by
Boone County)

Remove Existing
Driveway Access to 63
and Install New
Approaches to New
Outer Road

63

U.S. Hwy 63 N

63

Mc Comas Rd

Google Earth

Image © 2025 Airbus



1000 ft