



111 E Maple, PO Box 1019  
Independence, MO 64051-0519

Addendum: 2

Dated: October 8, 2025

Invitation To Bid #25027 – Truman Connected Phase 1 - City Project No. 112102 –  
Federal Project No. STP-3301(524)

The purpose of this addendum is to provide revisions to the following plan sheets, bid tabulation, and DBE goal requirement in order to correct errors in the original bid package, to address questions that have been received, and to reflect current changes to MoDOT LPA project policies:

- Plan Sheet no. 3 – “Summary of Quantities” has been revised to remove line item no. 40 “3’x3’ Grate Inlet” and replace it with “4’x4’ Grate Inlet.”
- Plan Sheet no. 56 – “Storm Sewer Sheet 1” has been revised to reflect the correct sizes for CB-12 and CB-13, which is 5’x3’ Curb Inlet.
- Plan Sheet no. 57 – “Storm Sewer Sheet 2” has been revised to reflect the correct size (4’x4’ Grate Inlet) for CB-18, and to correct the label on the plan sheet for JB-19.
- The Bid Tabulation has been revised to has been revised to remove line item no. 40 “3’x3’ Grate Inlet” and replace it with “4’x4’ Grate Inlet.”
- Due to recent DBE program changes to the MoDOT LPA Program (which this project falls under due to the Federal Grant Funding associated with it), the DBE goal for this project is no longer applicable, and the DBE goal for this project is now 0%. Contractors are no longer required to submit any of the DBE Submittal Forms that were originally included in the Specifications Package.
- **Due to these recent DBE goal changes, in order to allow potential bidders sufficient time to prepare a bid for the project, the bid response deadline for the project has been revised to October 16, 2025 at 2:00 p.m. local time.**

Richelieu M. Sese, NIGP-CPP, CPPB  
Procurement Manager

October 7, 2025

Re: Communication on DBE Changes

Dear Stakeholder:

On September 30, 2025, USDOT published an Interim Final Rule (IFR) that significantly changes the Disadvantaged Business Enterprise (DBE) and Airport Concessionaire (ACDBE) programs.

The IFR was effective immediately upon publication in the Federal Register on October 3, 2025.

The immediate steps MoDOT is taking to comply with the IFR are:

1. MoDOT will not be setting DBE goals on future contracts - including Professional Service and Construction Contracts - while next steps are being developed and implemented, to fully comply with the required changes to the DBE program.
2. MoDOT will continue to work with USDOT and federal transportation administrations to develop timely guidance and direction for the DBE community regarding implementation of the IFR.
3. Further guidance will be forthcoming as MoDOT staff develops additional action needed for full compliance with the IFR.

Sincerely,



Eric Schroeter, P.E.  
Deputy Director/Chief Engineer



PROPOSAL TO THE CITY OF INDEPENDENCE, MISSOURI ON

TRUMAN CONNECTED PHASE 1

City Project No. 112102

Federal Project No. STP-3301(524)

THE UNDERSIGNED BIDDER, having examined the plans, specifications, and other proposed contract documents hereto attached, and all addenda thereto; the location of the proposed work; the nature of the excavations to be done; the location, arrangement, construction and condition of existing structures affecting the work; and being cognizant of the conditions of streets giving access to the sites of the work; the existing and local conditions relative to construction hazards, labor, transportation, hauling, trucking and all other factors and conditions affecting, or which may be affected by, the work;

HEREBY PROPOSES to furnish all required tools, equipment, plant and materials; to perform all necessary labor and to construct, install and complete all work stipulated in, required by, and in accordance with the proposed contract documents hereto attached and the plans referred to herein for the unit, lump sum and extended prices listed below.

THE UNDERSIGNED BIDDER UNDERSTANDS that the quantities shown in this proposal are approximate and offers to do the work at the prices stated in the following schedule; the total bid shall be a summation of the price extensions shown and in no event shall the total compensation paid for the work specified herein exceed said total bid unless the Contractor shall obtain a change order duly approved by the City Council prior to the performance of additional or altered work, as set forth in these specifications:

**BASE BID**

Bid Item	Item	Quantity	Unit	Unit Cost	Cost
1	Mobilization	1	L.S.		
2	Construction Staking	1	L.S.		
3	Clearing and Grubbing	1	L.S.		
4	Seeding	2,689	S.Y.		
5	6" Top Soil	2,689	S.Y.		
6	Channelizer (Trim Line)	200	Each		
7	Construction Signs	101	S.F.		
8	Type 3 Movable Barricade	7	Each		
9	Sequential Flashing Warning Light	8	Each		
10	Signs (Size Varies) (Includes Mounting Hardware)	1	L.S.		
11	Remove and Reset Signs	1	L.S.		
12	Full Depth Pavement Removal	6,641	S.Y.		
13	Sidewalk and Driveway Removal	3,642	S.Y.		
14	Curb & Gutter (All Types) (KCMMB) (4K)	6,485	L.F.		
15	Sidewalk (4") (KCMMB) (4K)	1,822	S.Y.		
16	Shared Use Path (4") (KCMMB) (4K)	6,579	S.Y.		
17	Cycle Track (6") (KCMMB)	1,681	S.Y.		
18	Brick Paver Buffer	178	S.Y.		
19	ADA Sidewalk Ramps (6") (KCMMB) (4K)	54	Each		
20	Commercial Driveway (8")	531	S.Y.		
21	Residential Driveway (6")	194	S.Y.		
22	Asphaltic Concrete (8")	43	S.Y.		
23	Integral Sidewalk Retaining Wall With Underdrain	55	L.F.		
24	Pavement Marking Removal	1	L.S.		

25	Pavement Marking (4" White)	12,294	L.F.		
26	Pavement Marking (4" Yellow)	20,098	L.F.		
27	Pavement Marking (6" White)	388	L.F.		
28	Pavement Marking (8" White)	1,252	L.F.		
29	Pavement Marking (8" Yellow)	33	L.F.		
30	Pavement Marking (12" White)	108	L.F.		
31	Pavement Marking (24" White)	3,376	L.F.		
32	Pavement Marking (24" Green)	1,864	L.F.		
33	Pavement Marking (18" Yield Bar)	26	L.F.		
34	Preformed Thermoplastic Symbols	57	Each		
35	Flexible Guide Post	100	Each		
36	Removable Bollard	10	Each		
37	5' x 3' Curb Inlet (Type 1)	4	Each		
38	5'x3' Junction Box	1	Each		
39	4'x3' Junction Box	1	Each		
40	4'x4' Grate Inlet	1	Each		
41	Remove and Reset Inlet Top	1	Each		
42	Remove Inlet Top and Install Junction Box Top	1	Each		
43	12" RCP	10	L.F.		
44	15" RCP	349	L.F.		
45	Integral Sidewalk Trench Drain	20	L.F.		
46	Type A Flume	10	L.F.		
47	Traffic Signal	1	L.S.		
48	Handrail	26	L.F.		
49	Post Construction As-Built Survey	1	L.S.		
50	Reconnection & Modification of Existing Facilities (Force Account)	1	F.A.	\$175,000	\$175,000

TOTAL BASE BID (Items 1-50) (in words and figures):

\_\_\_\_\_

\$ \_\_\_\_\_

THE UNDERSIGNED HEREBY AGREES to furnish the required bond and to enter into contract agreement within ten (10) days after acceptance of this Proposal; and,

FURTHER AGREES TO COMPLETE all work covered by this Proposal in accordance with the stipulated conditions and requirements within **one hundred and twenty (120) calendar days**, for the amount of the total construction cost shown and accepted.

ENCLOSED is bidder's bond or certified check in the amount of five percent (5%) of the total cost of the construction shown in the Proposal.


Amount of Bond: \$ \_\_\_\_\_ ( \_\_\_\_\_ )

THE UNDERSIGNED AGREES that this amount is to be forfeited and to become the property of the Owner as liquidated damages should this Proposal be accepted, and the contract awarded to him, but he fails to enter into contract agreement in the form prescribed and to furnish the required bond within ten (10) days.

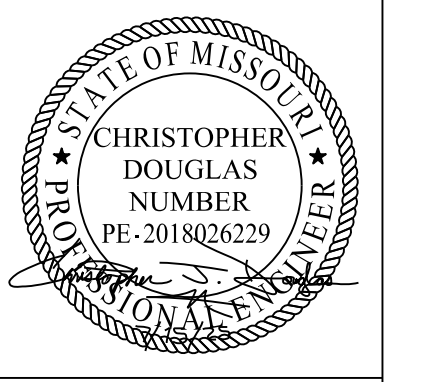
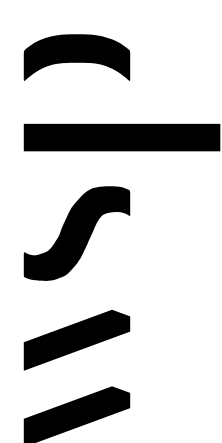
ESTIMATED QUANTITIES			
Bid Item	Item	Quantity	Unit
1	Mobilization	1	L.S.
2	Construction Staking	1	L.S.
3	Clearing and Grubbing	1	L.S.
4	Seeding	2689	S.Y.
5	6" Top Soil	2689	S.Y.
6	Channelizer (Trim Line)	200	Each
7	Construction Signs	101	S.F.
8	Type 3 Moveable Barricade	7	Each
9	Sequential Flashing Warning Light	8	Each
10	Signs (Size Varies) (Includes Mounting Hardware)	1	L.S.
11	Remove and Reset Signs	1	L.S.
12	Full Depth Pavement Removal	6641	S.Y.
13	Sidewalk and Driveway Removal	3642	S.Y.
14	Curb & Gutter (All Types) (KCMMB) (4K)	6485	L.F.
15	Sidewalk (4") (KCMMB) (4K)	1822	S.Y.
16	Shared Use Path (4") (KCMMB) (4K)	6576	S.Y.
17	Cycle Track (4") (KCMMB)	1681	S.Y.
18	Brick Paver Buffer	178	S.Y.
19	ADA Sidewalk Ramps (6") (KCMMB) (4K)	54	Each
20	Commercial Driveway (8")	531	S.Y.
21	Residential Driveway (6")	194	S.Y.
22	Asphaltic Concrete (8")	43	S.Y.
23	Integral Sidewalk Retaining Wall With Underdrain	55	L.F.
24	Pavement Marking Removal	1	L.S.
25	Pavement Marking (4" White)	12294	L.F.
26	Pavement Marking (4" Yellow)	20098	L.F.
27	Pavement Marking (6" White)	388	L.F.
28	Pavement Marking (8" White)	1252	L.F.
29	Pavement Marking (8" Yellow)	33	L.F.
30	Pavement Marking (12" White)	108	L.F.
31	Pavement Marking (24" White)	3376	L.F.
32	Pavement Marking (24" Green)	1864	L.F.
33	Pavement Marking (18" Yield Bar)	26	L.F.
34	Preformed Thermoplastic Symbols	57	Each
35	Flexible Guide Post	100	Each
36	Removable Bollard	10	Each
37	5' x 3' Curb Inlet (Type 1)	4	Each
38	5' x 3' Junction Box	1	Each
39	4' x 3' Junction Box	1	Each
40	<del>3' x 3' Grate Inlet</del> 4'x4' Grate Inlet	1	Each
41	Remove and Reset Inlet Top	1	Each
42	Remove Inlet Top Install Junction Box Top	1	Each
43	12" RCP	10	L.F.
44	15" RCP	349	L.F.
45	Integral Sidewalk Trench Drain	20	L.F.
46	Type A Flume	10	L.F.
47	Traffic Signal	1	L.S.
48	Handrail	26	L.F.
49	Post Construction As-Built Survey	1	L.S.
50	Reconnection & Modification of Existing Facilities (Force Account)	1	F.A.

DESCRIPTION	DATE

CITY OF INDEPENDENCE MISSOURI  
MUNICIPAL SERVICES

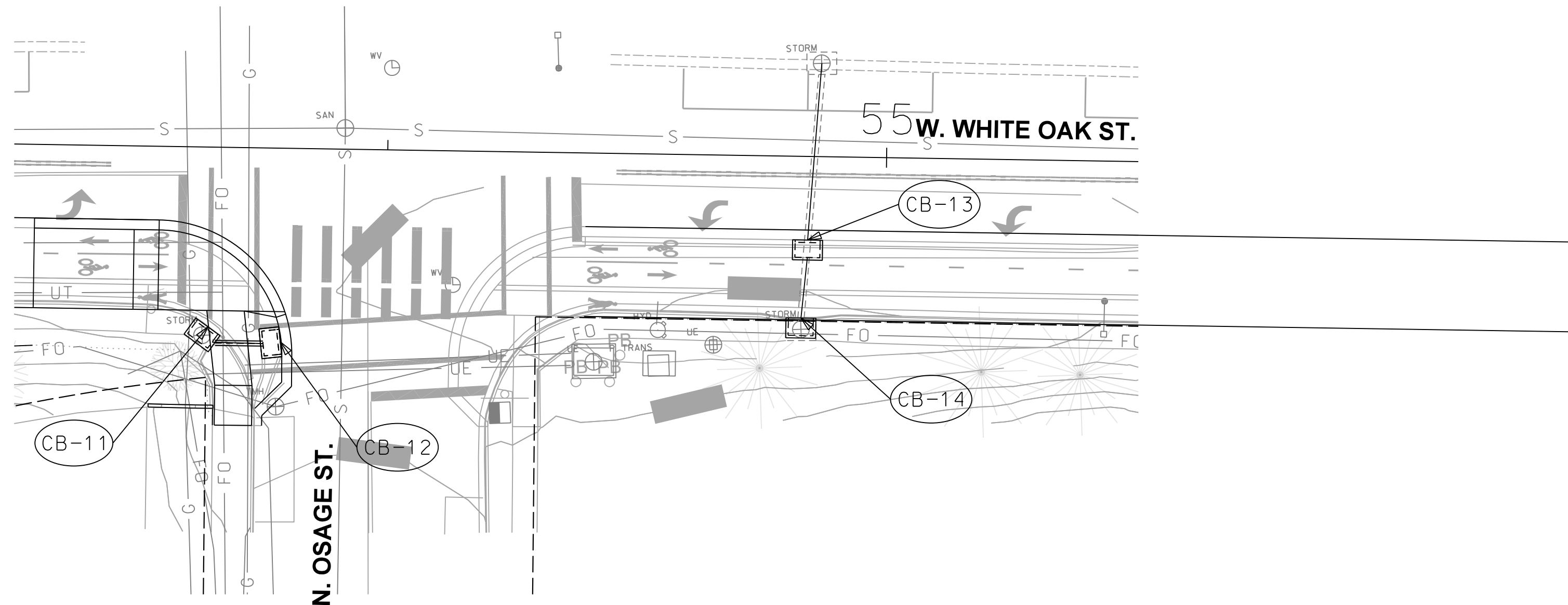


INDEPENDENCE  
MISSOURI  
111 EAST MAPLE AVE.  
INDEPENDENCE, MO 64050

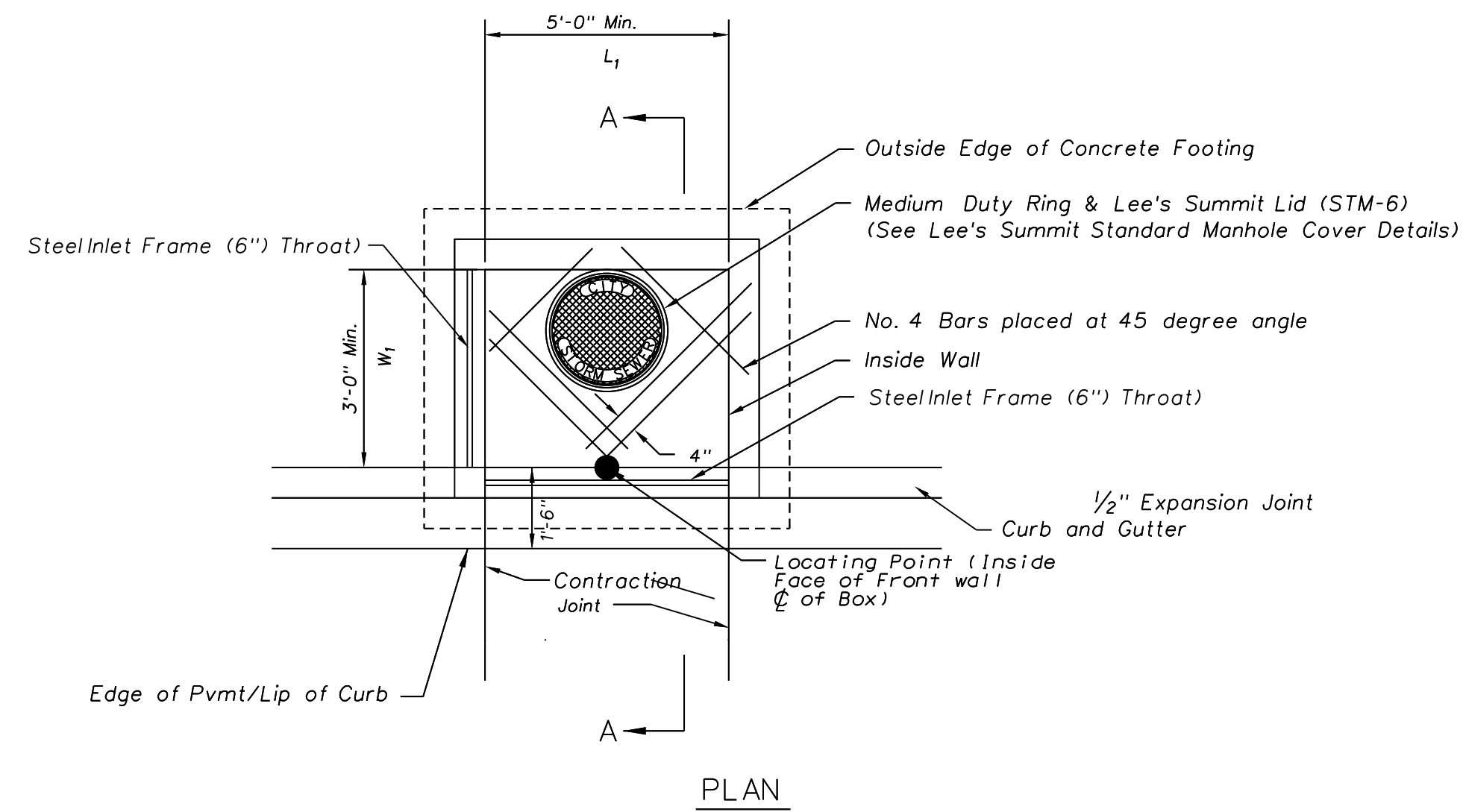
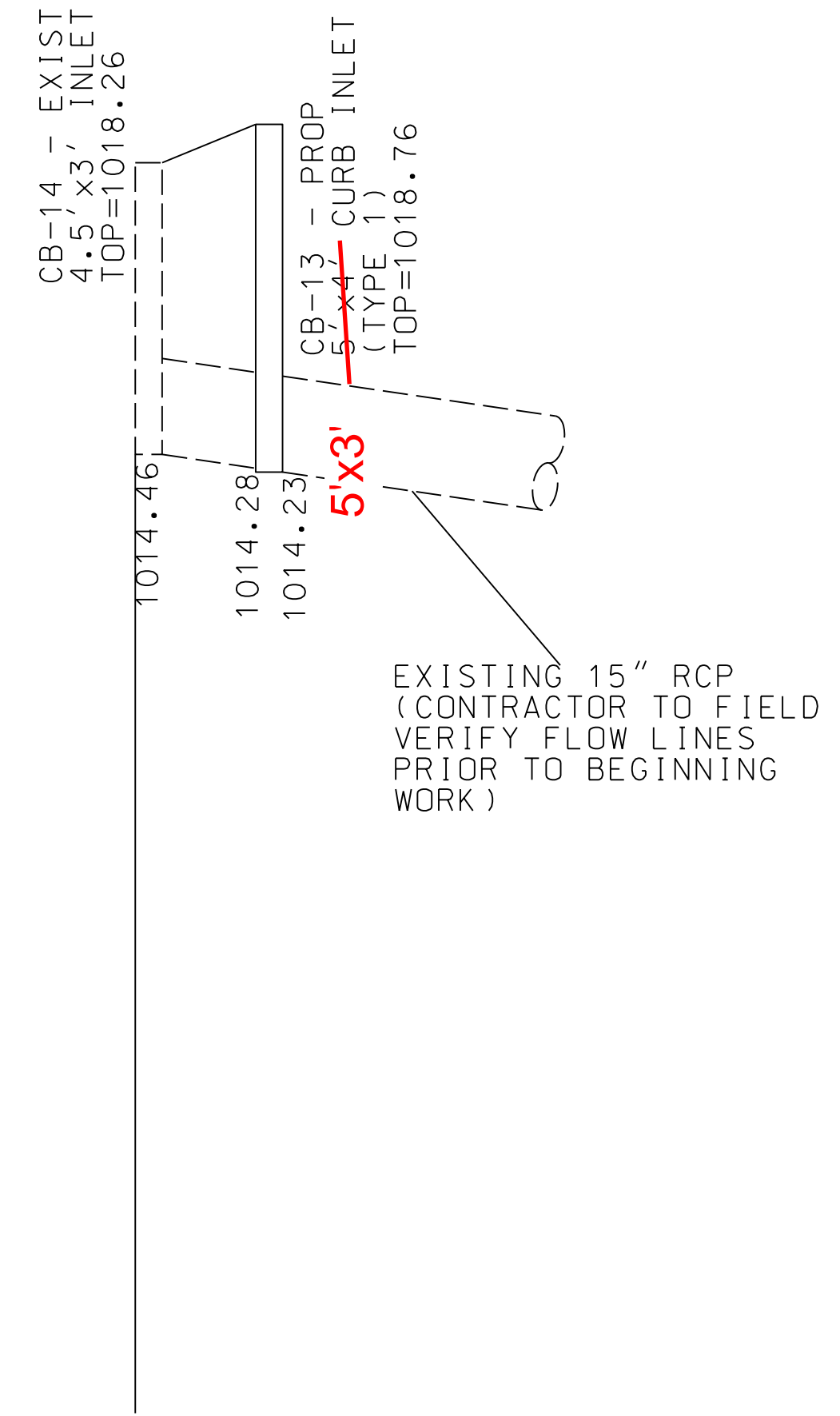
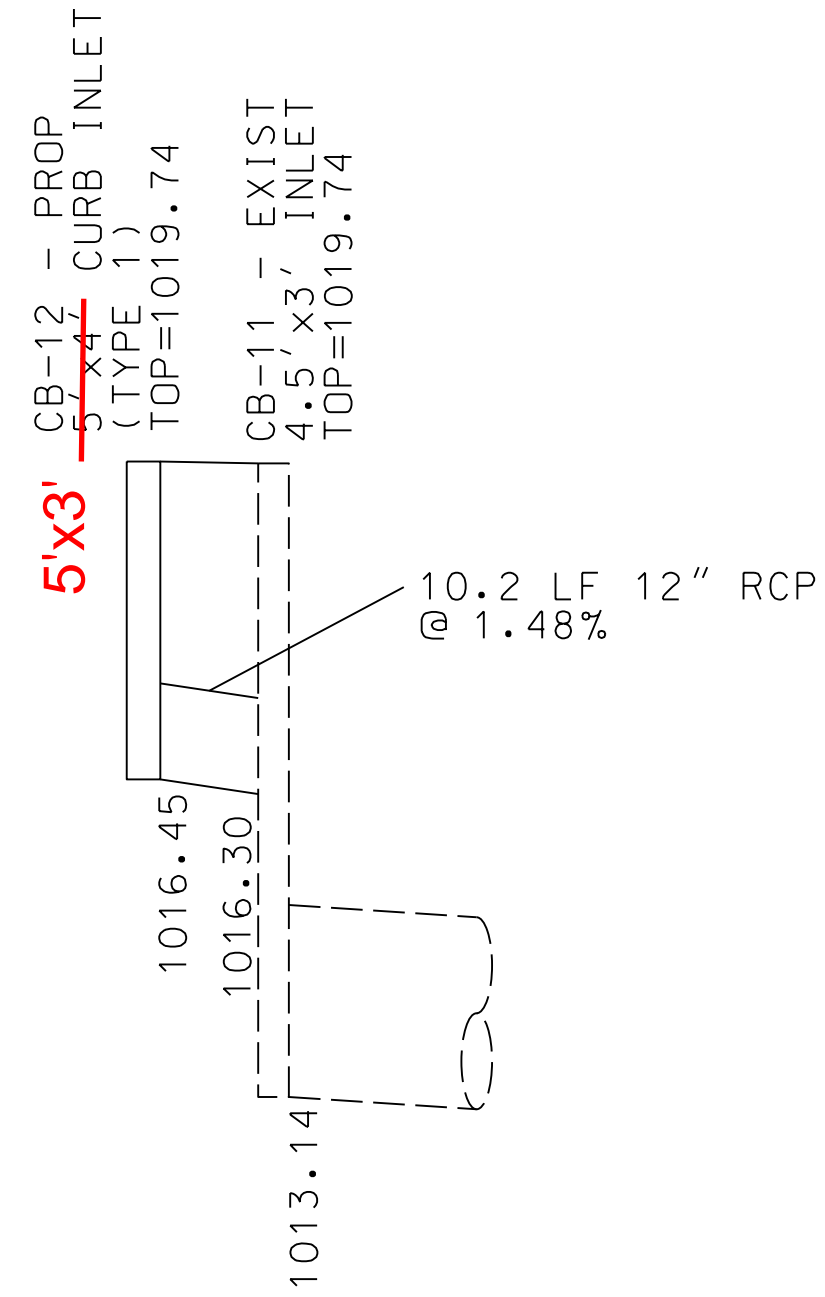



WSP  
WSP USA, INC.  
300 WYANDOTTE STREET  
SUITE 200  
KANSAS CITY, MO 64105

SUMMARY OF QUANTITIES  
TRUMAN CONNECTED PHASE 1

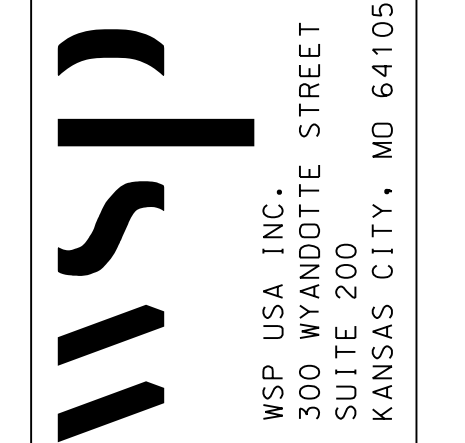
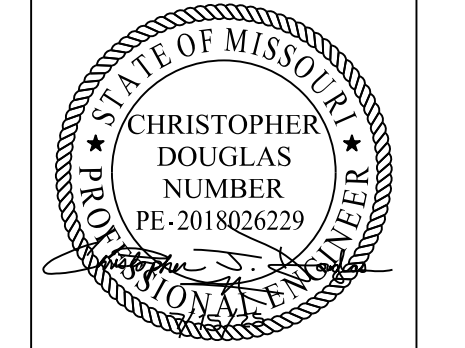


- |                           |                                 |                           |                            |
|---------------------------|---------------------------------|---------------------------|----------------------------|
| (CB-11)                   | (CB-12)                         | (CB-13)                   | (CB-14)                    |
| Exist CB                  | Prop CB                         | Prop CB                   | Exist CB                   |
| Adjust top to final grade | 5x3 Curb Inlet (Type 1)         | 5x3 Curb Inlet (Type 1)   | 5x3 Curb Inlet (Type 1)    |
| Sta. 53+46.19, 36.42' Rt. | Throats on east and south sides | Sta. 54+83.32, 32.91' Rt. | Sta. 54+84.42, 17.25' Rt., |
|                           | Construct flume to the south    |                           |                            |
|                           | Sta. 53+78.55, 38.85' Rt.       |                           |                            |



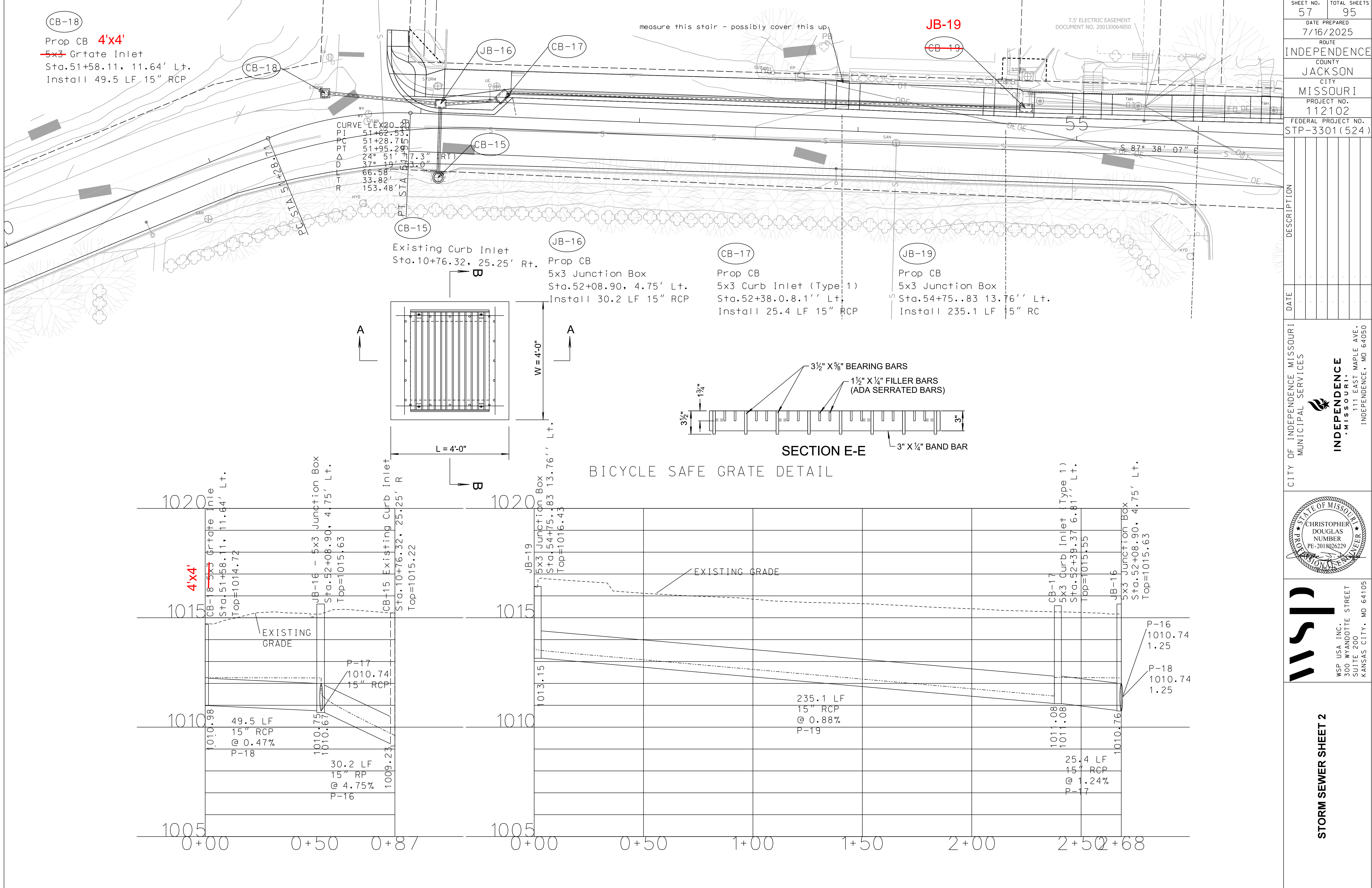
SHEET NO.	TOTAL SHEETS
56	95
DATE PREPARED	
7/16/2025	
ROUTE	
INDEPENDENCE	
COUNTY	
JACKSON	
CITY	
MISSOURI	
PROJECT NO.	
112102	
FEDERAL PROJECT NO.	
STP-3301(524)	

DESCRIPTION	DATE



**STORM SEWER SHEET 1**

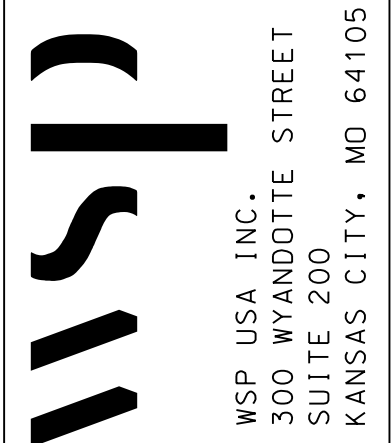




SHEET NO.	57	TOTAL SHEETS	95
DATE PREPARED	7/16/2025		
ROUTE	INDEPENDENCE		
COUNTY	JACKSON		
CITY	MISSOURI		
PROJECT NO.	112102		
FEDERAL PROJECT NO.	STP-3301(524)		

DESCRIPTION	DATE
CITY OF INDEPENDENCE MISSOURI MUNICIPAL SERVICES	

INDEPENDENCE MISSOURI  
 111 EAST MAPLE AVE.  
 INDEPENDENCE, MO 64050



**STORM SEWER SHEET 2**