



111 E Maple, PO Box 1019  
Independence, MO 64051-0519

Addendum: 1

Dated: October 2, 2025

Invitation To Bid #25027 – Truman Connected Phase 1 - City Project No. 112102 –  
Federal Project No. STP-3301(524)

The purpose of this addendum is to provide revisions to the following plan sheets and bid tabulation in order to correct errors in the original bid package and to address questions that have been received:

- Plan Sheet no. 3 – “Summary of Quantities” has been revised to include a line item for “6” Top Soil” (line item no. 5), revise line item no. 16 “Shared Use Path (4”) (KCMMB 4K)” to accurately reflect the 4” thickness for the proposed shared use path, and to include a line item for “Pavement Marking Removal” (line item no. 24).
- Plan Sheet no. 4 – “Typical Sections” has been revised to reflect the 2’ buffer which should be maintained in the same areas as they currently exist, along Lexington Ave.
- Plan Sheets no. 23 – “Plan Sheet 15” and no. 82 – “Geometric Details” have been revised to show the 2’ buffer which should be maintained in the same areas as they currently exist, along Lexington Ave.
- The Bid Tabulation has been revised to include a line item for “6” Top Soil” (line item no. 5), a revision to line item no. 16, “Shared Use Path” to specify the correct thickness of 4”, to include a line item for “Pavement Marking Removal” (line item no. 24), and the inclusion of the amount of \$175,000 for line item no. 50 “Force Account.”

Richelieu M. Sese, NIGP-CPP, CPPB  
Procurement Manager

PROPOSAL TO THE CITY OF INDEPENDENCE, MISSOURI ON

TRUMAN CONNECTED PHASE 1

City Project No. 112102

Federal Project No. STP-3301(524)

THE UNDERSIGNED BIDDER, having examined the plans, specifications, and other proposed contract documents hereto attached, and all addenda thereto; the location of the proposed work; the nature of the excavations to be done; the location, arrangement, construction and condition of existing structures affecting the work; and being cognizant of the conditions of streets giving access to the sites of the work; the existing and local conditions relative to construction hazards, labor, transportation, hauling, trucking and all other factors and conditions affecting, or which may be affected by, the work;

HEREBY PROPOSES to furnish all required tools, equipment, plant and materials; to perform all necessary labor and to construct, install and complete all work stipulated in, required by, and in accordance with the proposed contract documents hereto attached and the plans referred to herein for the unit, lump sum and extended prices listed below.

THE UNDERSIGNED BIDDER UNDERSTANDS that the quantities shown in this proposal are approximate and offers to do the work at the prices stated in the following schedule; the total bid shall be a summation of the price extensions shown and in no event shall the total compensation paid for the work specified herein exceed said total bid unless the Contractor shall obtain a change order duly approved by the City Council prior to the performance of additional or altered work, as set forth in these specifications:

**BASE BID**

Bid Item	Item	Quantity	Unit	Unit Cost	Cost
1	Mobilization	1	L.S.		
2	Construction Staking	1	L.S.		
3	Clearing and Grubbing	1	L.S.		
4	Seeding	2,689	S.Y.		
5	6" Top Soil	2,689	S.Y.		
6	Channelizer (Trim Line)	200	Each		
7	Construction Signs	101	S.F.		
8	Type 3 Movable Barricade	7	Each		
9	Sequential Flashing Warning Light	8	Each		
10	Signs (Size Varies) (Includes Mounting Hardware)	1	L.S.		
11	Remove and Reset Signs	1	L.S.		
12	Full Depth Pavement Removal	6,641	S.Y.		
13	Sidewalk and Driveway Removal	3,642	S.Y.		
14	Curb & Gutter (All Types) (KCMMB) (4K)	6,485	L.F.		
15	Sidewalk (4") (KCMMB) (4K)	1,822	S.Y.		
16	Shared Use Path (4") (KCMMB) (4K)	6,579	S.Y.		
17	Cycle Track (6") (KCMMB)	1,681	S.Y.		
18	Brick Paver Buffer	178	S.Y.		
19	ADA Sidewalk Ramps (6") (KCMMB) (4K)	54	Each		
20	Commercial Driveway (8")	531	S.Y.		
21	Residential Driveway (6")	194	S.Y.		
22	Asphaltic Concrete (8")	43	S.Y.		
23	Integral Sidewalk Retaining Wall With Underdrain	55	L.F.		
24	Pavement Marking Removal	1	L.S.		

25	Pavement Marking (4" White)	12,294	L.F.		
26	Pavement Marking (4" Yellow)	20,098	L.F.		
27	Pavement Marking (6" White)	388	L.F.		
28	Pavement Marking (8" White)	1,252	L.F.		
29	Pavement Marking (8" Yellow)	33	L.F.		
30	Pavement Marking (12" White)	108	L.F.		
31	Pavement Marking (24" White)	3,376	L.F.		
32	Pavement Marking (24" Green)	1,864	L.F.		
33	Pavement Marking (18" Yield Bar)	26	L.F.		
34	Preformed Thermoplastic Symbols	57	Each		
35	Flexible Guide Post	100	Each		
36	Removable Bollard	10	Each		
37	5' x 3' Curb Inlet (Type 1)	4	Each		
38	5'x3' Junction Box	1	Each		
39	4'x3' Junction Box	1	Each		
40	3'x3' Grate Inlet	1	Each		
41	Remove and Reset Inlet Top	1	Each		
42	Remove Inlet Top and Install Junction Box Top	1	Each		
43	12" RCP	10	L.F.		
44	15" RCP	349	L.F.		
45	Integral Sidewalk Trench Drain	20	L.F.		
46	Type A Flume	10	L.F.		
47	Traffic Signal	1	L.S.		
48	Handrail	26	L.F.		
49	Post Construction As-Built Survey	1	L.S.		
50	Reconnection & Modification of Existing Facilities (Force Account)	1	F.A.	\$175,000	\$175,000

TOTAL BASE BID (Items 1-50) (in words and figures):

\_\_\_\_\_

\$ \_\_\_\_\_

THE UNDERSIGNED HEREBY AGREES to furnish the required bond and to enter into contract agreement within ten (10) days after acceptance of this Proposal; and,

FURTHER AGREES TO COMPLETE all work covered by this Proposal in accordance with the stipulated conditions and requirements within **one hundred and twenty (120) calendar days**, for the amount of the total construction cost shown and accepted.

ENCLOSED is bidder's bond or certified check in the amount of five percent (5%) of the total cost of the construction shown in the Proposal.

Amount of Bond: \$ \_\_\_\_\_ ( \_\_\_\_\_ )

THE UNDERSIGNED AGREES that this amount is to be forfeited and to become the property of the Owner as liquidated damages should this Proposal be accepted, and the contract awarded to him, but he fails to enter into contract agreement in the form prescribed and to furnish the required bond within ten (10) days.

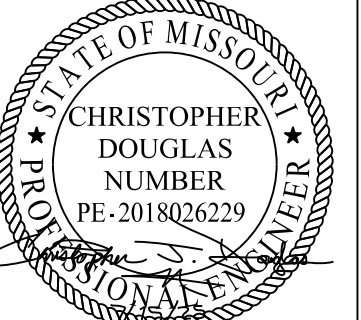

SHEET NO.	3	TOTAL SHEETS	95
DATE PREPARED	10/1/2025		
ROUTE	INDEPENDENCE		
COUNTY	JACKSON		
CITY	MISSOURI		
PROJECT NO.	112102		
FEDERAL PROJECT NO.	STP-3301(524)		

DESCRIPTION											
DATE											

CITY OF INDEPENDENCE MISSOURI  
MUNICIPAL SERVICES



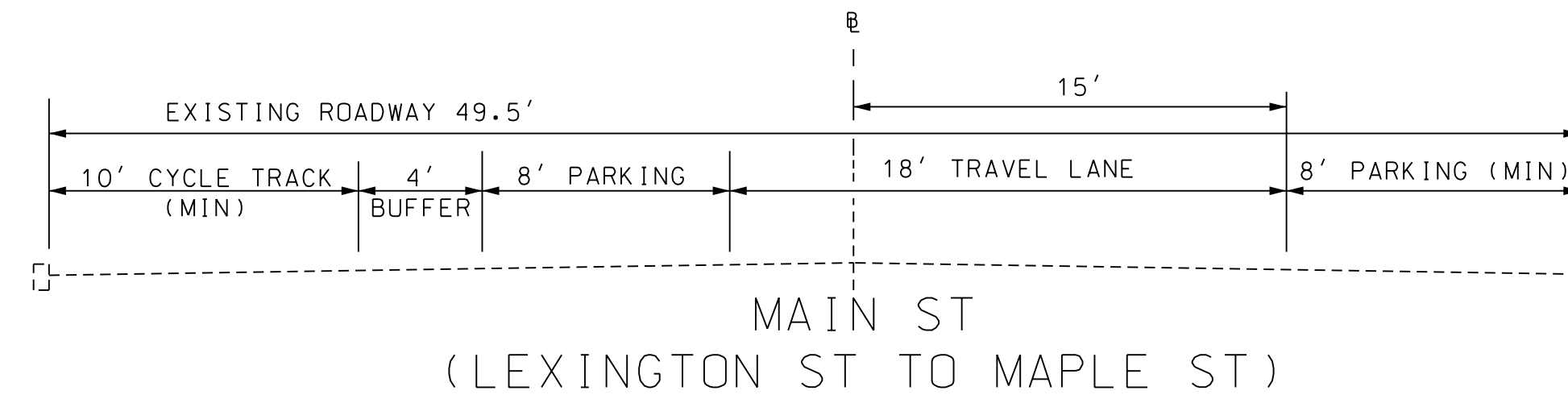
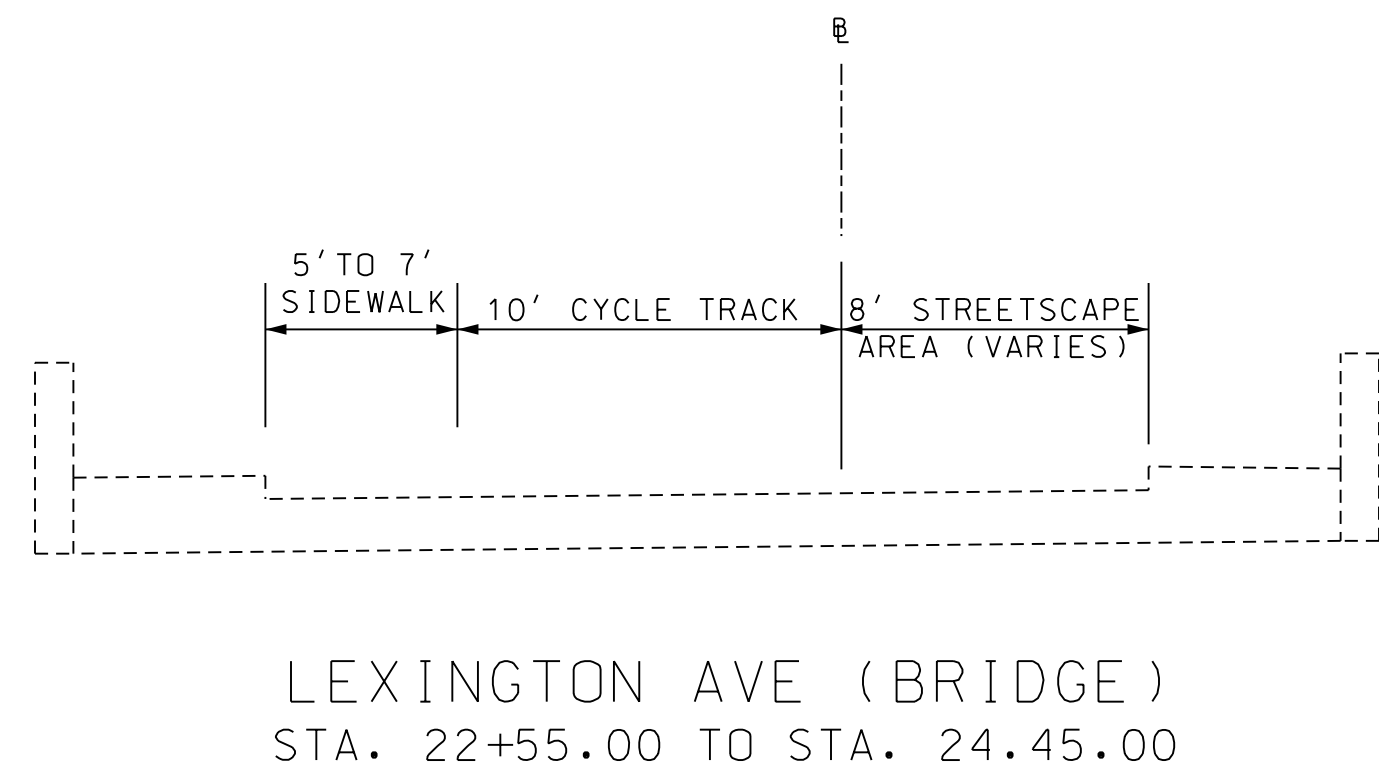
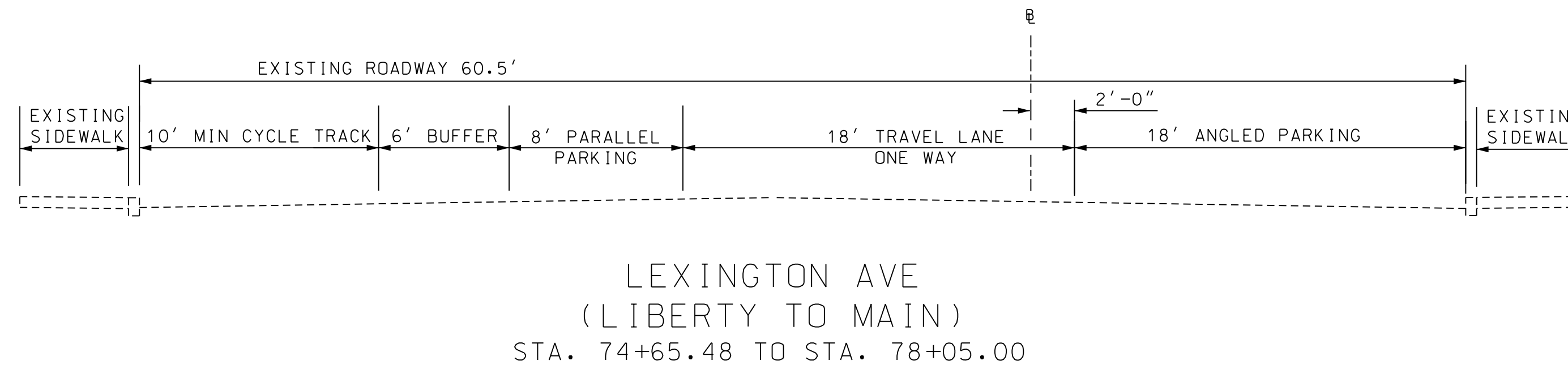
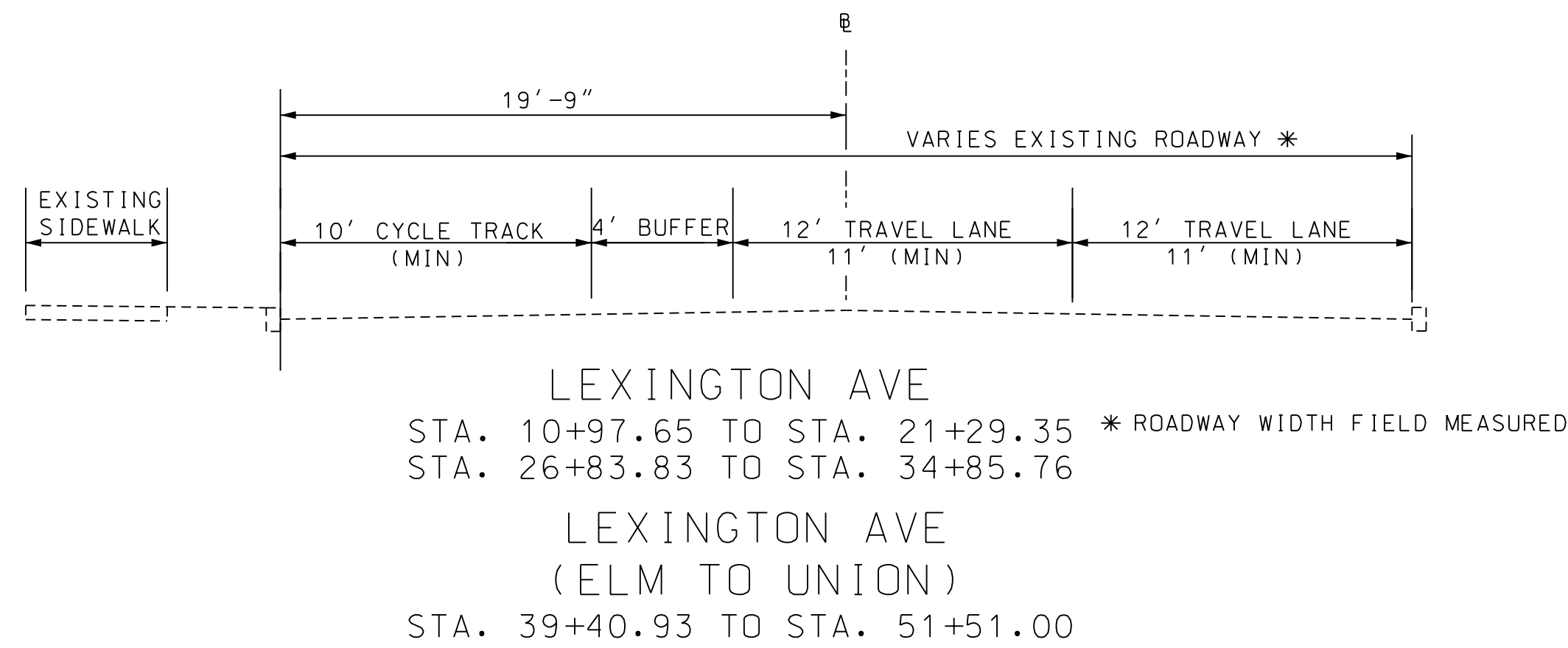
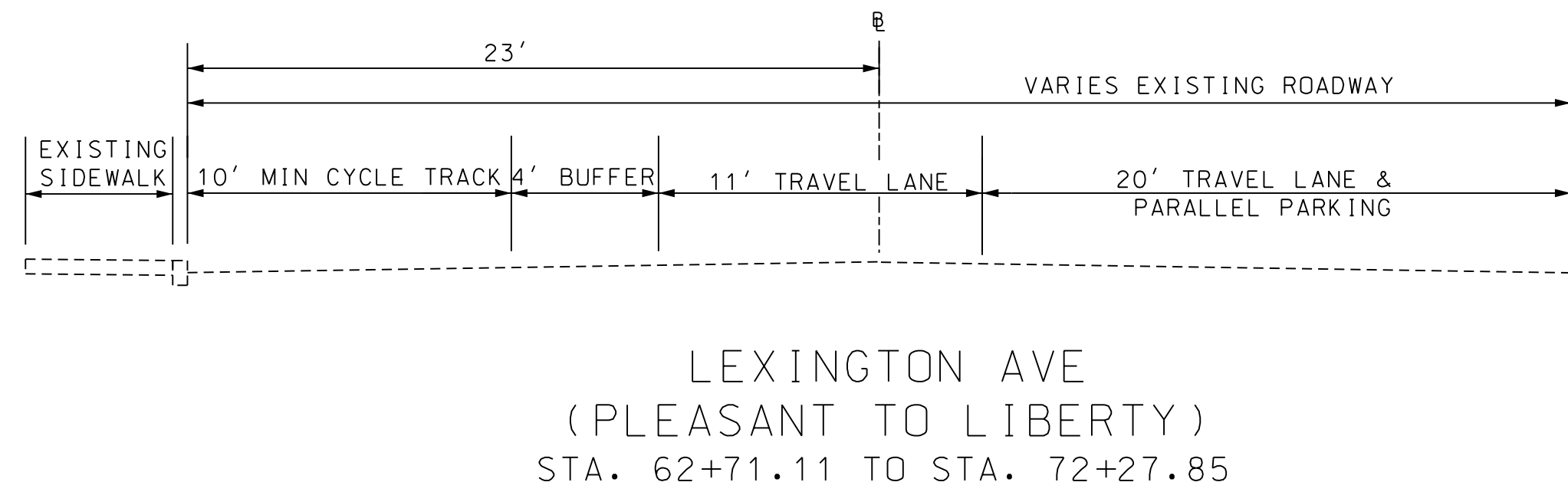
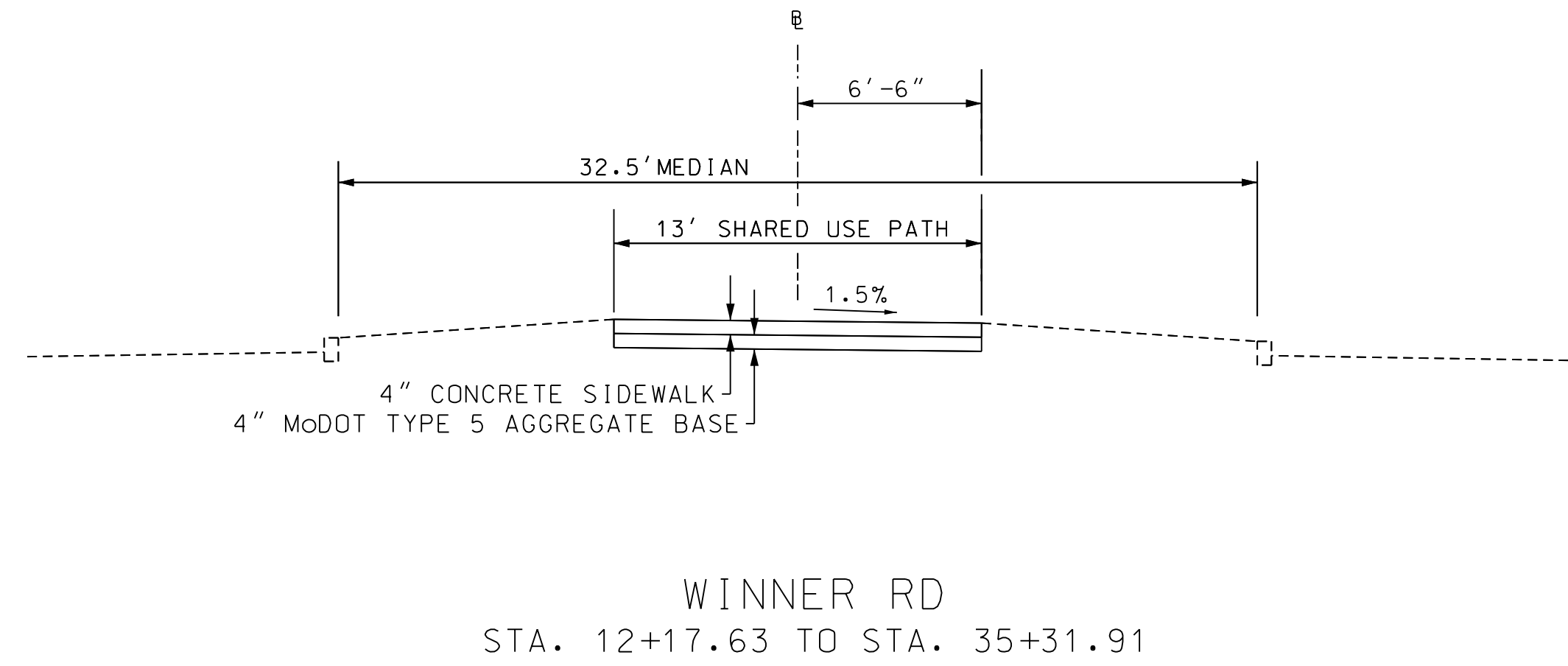
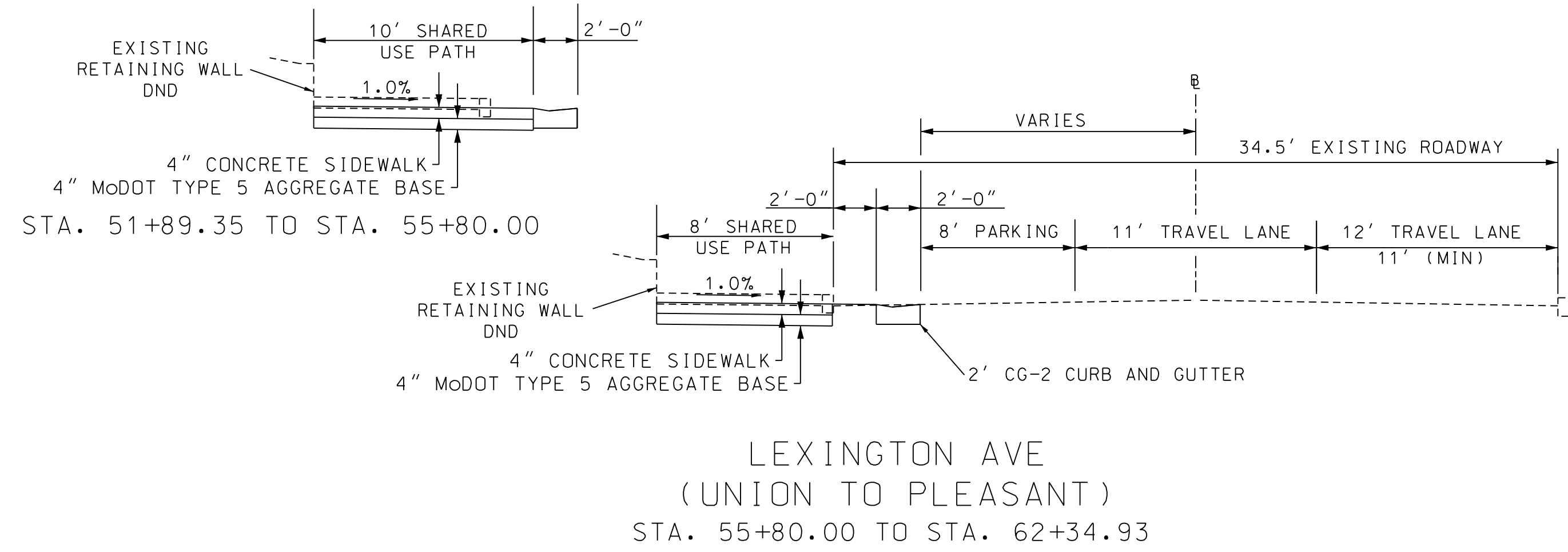
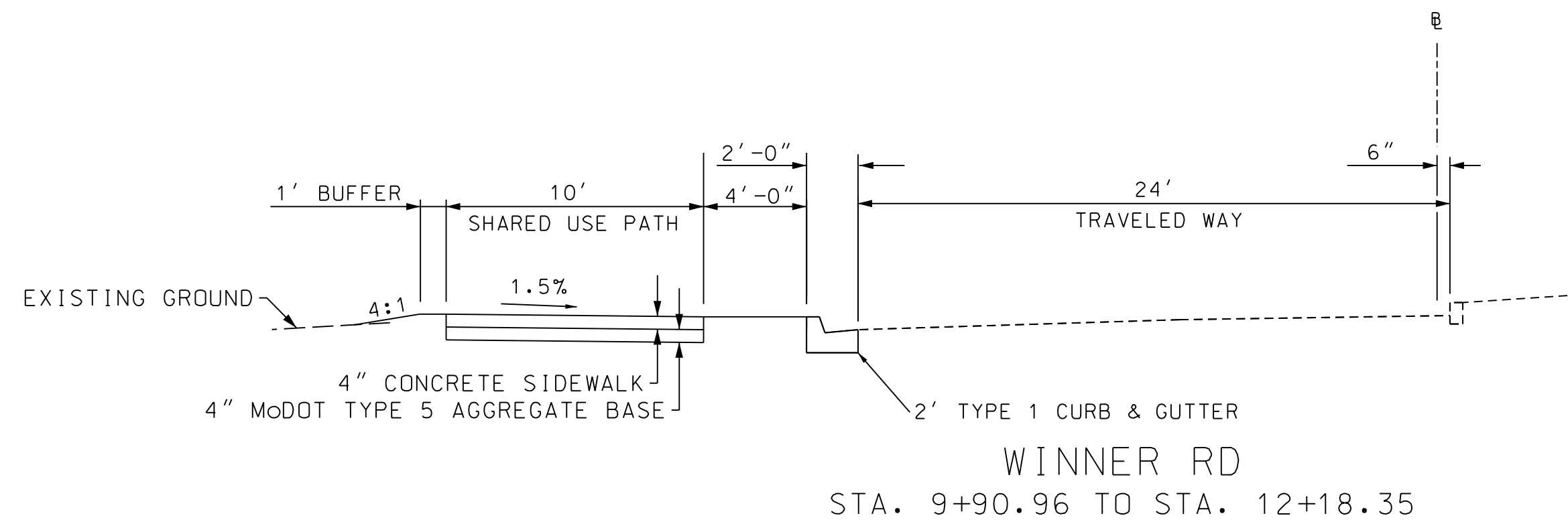
**INDEPENDENCE**  
MISSOURI  
111 EAST MAPLE AVE.  
INDEPENDENCE, MO 64050

WSP USA, INC.  
300 WYANDOTTE STREET  
SUITE 200  
KANSAS CITY, MO 64105

**SUMMARY OF QUANTITIES  
TRUMAN CONNECTED PHASE 1**

ESTIMATED QUANTITIES			
Bid Item	Item	Quantity	Unit
1	Mobilization	1	L.S.
2	Construction Staking	1	L.S.
3	Clearing and Grubbing	1	L.S.
4	Seeding	2689	S.Y.
5	6" Top Soil	2689	S.Y.
6	Channelizer (Trim Line)	200	Each
7	Construction Signs	101	S.F.
8	Type 3 Moveable Barricade	7	Each
9	Sequential Flashing Warning Light	8	Each
10	Signs (Size Varies) (Includes Mounting Hardware)	1	L.S.
11	Remove and Reset Signs	1	L.S.
12	Full Depth Pavement Removal	6641	S.Y.
13	Sidewalk and Driveway Removal	3642	S.Y.
14	Curb & Gutter (All Types) (KCMMB) (4K)	6485	L.F.
15	Sidewalk (4") (KCMMB) (4K)	1822	S.Y.
16	Shared Use Path (4") (KCMMB) (4K)	6576	S.Y.
17	Cycle Track (4") (KCMMB)	1681	S.Y.
18	Brick Paver Buffer	178	S.Y.
19	ADA Sidewalk Ramps (6") (KCMMB) (4K)	54	Each
20	Commercial Driveway (8")	531	S.Y.
21	Residential Driveway (6")	194	S.Y.
22	Asphaltic Concrete (8")	43	S.Y.
23	Integral Sidewalk Retaining Wall With Underdrain	55	L.F.
24	Pavement Marking Removal	1	L.S.
25	Pavement Marking (4" White)	12294	L.F.
26	Pavement Marking (4" Yellow)	20098	L.F.
27	Pavement Marking (6" White)	388	L.F.
28	Pavement Marking (8" White)	1252	L.F.
29	Pavement Marking (8" Yellow)	33	L.F.
30	Pavement Marking (12" White)	108	L.F.
31	Pavement Marking (24" White)	3376	L.F.
32	Pavement Marking (24" Green)	1864	L.F.
33	Pavement Marking (18" Yield Bar)	26	L.F.
34	Preformed Thermoplastic Symbols	57	Each
35	Flexible Guide Post	100	Each
36	Removable Bollard	10	Each
37	5' x 3' Curb Inlet (Type 1)	4	Each
38	5' x 3' Junction Box	1	Each
39	4' x 3' Junction Box	1	Each
40	3' x 3' Grate Inlet	1	Each
41	Remove and Reset Inlet Top	1	Each
42	Remove Inlet Top Install Junction Box Top	1	Each
43	12" RCP	10	L.F.
44	15" RCP	349	L.F.
45	Integral Sidewalk Trench Drain	20	L.F.
46	Type A Flume	10	L.F.
47	Traffic Signal	1	L.S.
48	Handrail	26	L.F.
49	Post Construction As-Built Survey	1	L.S.
50	Reconnection & Modification of Existing Facilities (Force Account)	1	F.A.

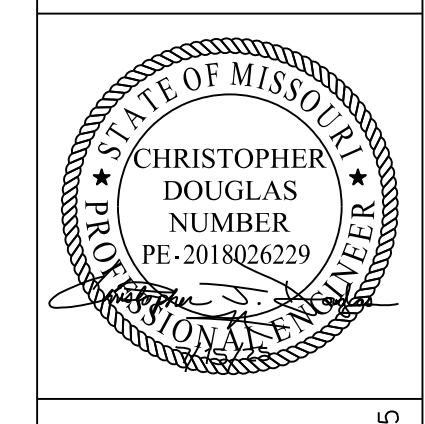


SHEET NO.	TOTAL SHEETS
4	95
DATE PREPARED	
10/1/2025	
ROUTE	
INDEPENDENCE	
COUNTY	
JACKSON	
CITY	
MISSOURI	
PROJECT NO.	
112102	
FEDERAL PROJECT NO.	
STP-3301(524)	

DESCRIPTION	DATE

CITY OF INDEPENDENCE MISSOURI  
MUNICIPAL SERVICES

**INDEPENDENCE**  
MISSOURI  
111 EAST MAPLE AVE.  
INDEPENDENCE, MO 64050

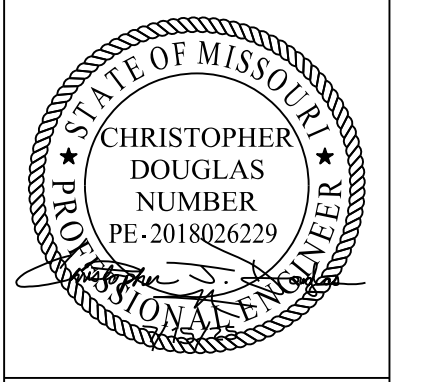


**WSP**  
WSP USA, INC.  
300 WYANDOTTE STREET  
SUITE 200  
KANSAS CITY, MO 64105

**TYPICAL SECTIONS**

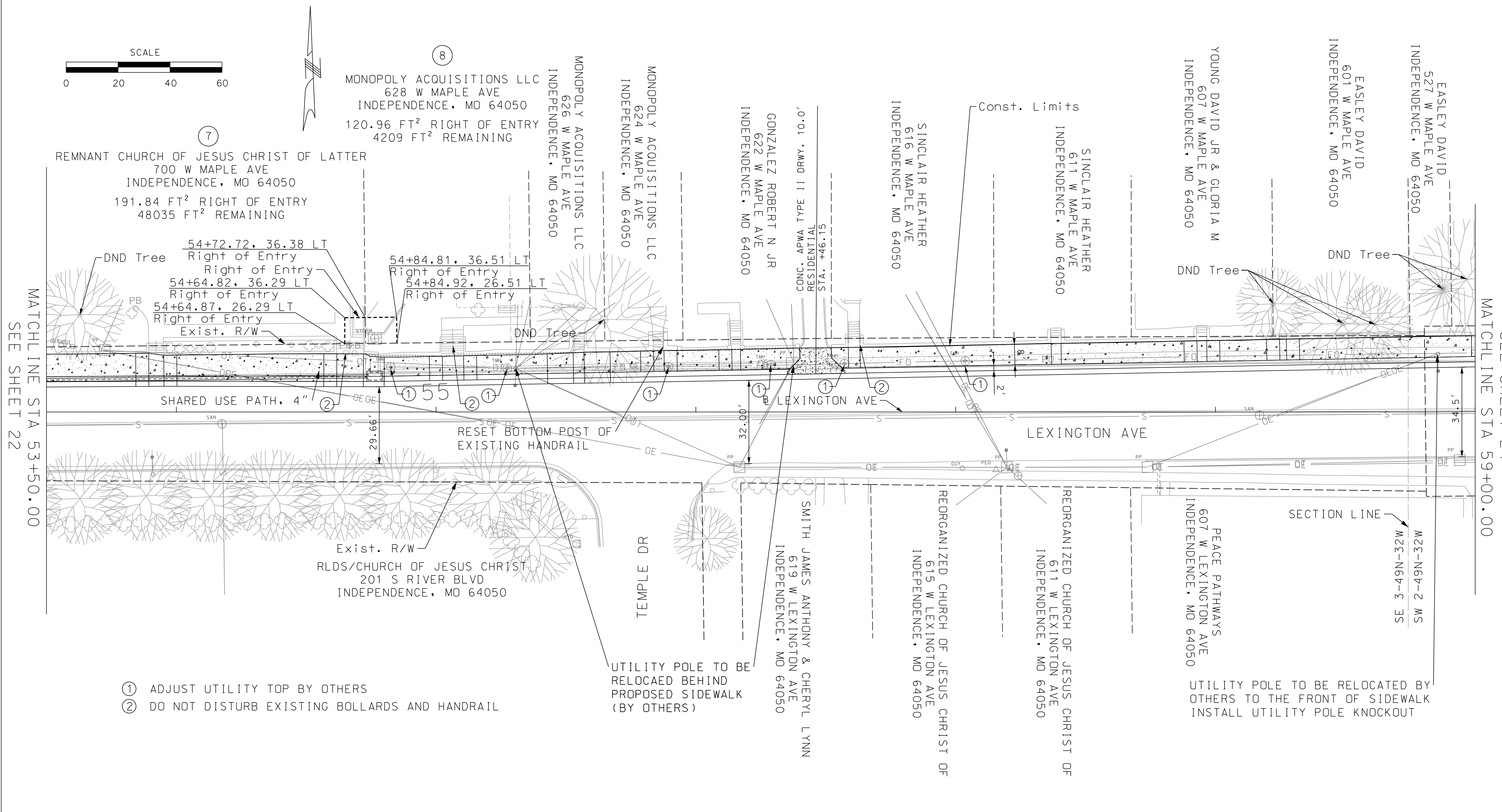
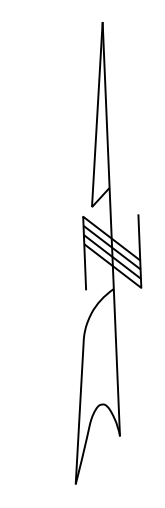
SHEET NO.	23	TOTAL SHEETS	95
DATE PREPARED	10/1/2025		
ROUTE	INDEPENDENCE		
COUNTY	JACKSON		
CITY	MISSOURI		
PROJECT NO.	112102		
FEDERAL PROJECT NO.	STP-3301(524)		

NO.	DESCRIPTION	DATE



**WSP**  
WSP USA, INC.  
300 WYANDOTTE STREET  
SUITE 200  
KANSAS CITY, MO 64105

**PLAN SHEET 15**  
**STA. 53+50.00 TO STA. 59+00.00**

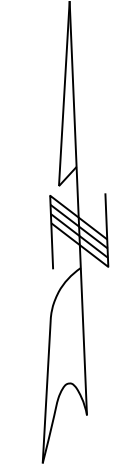
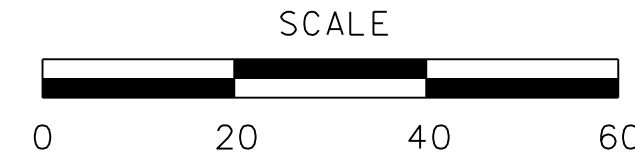


- ① ADJUST UTILITY TOP BY OTHERS
- ② DO NOT DISTURB EXISTING BOLLARDS AND HANDRAIL

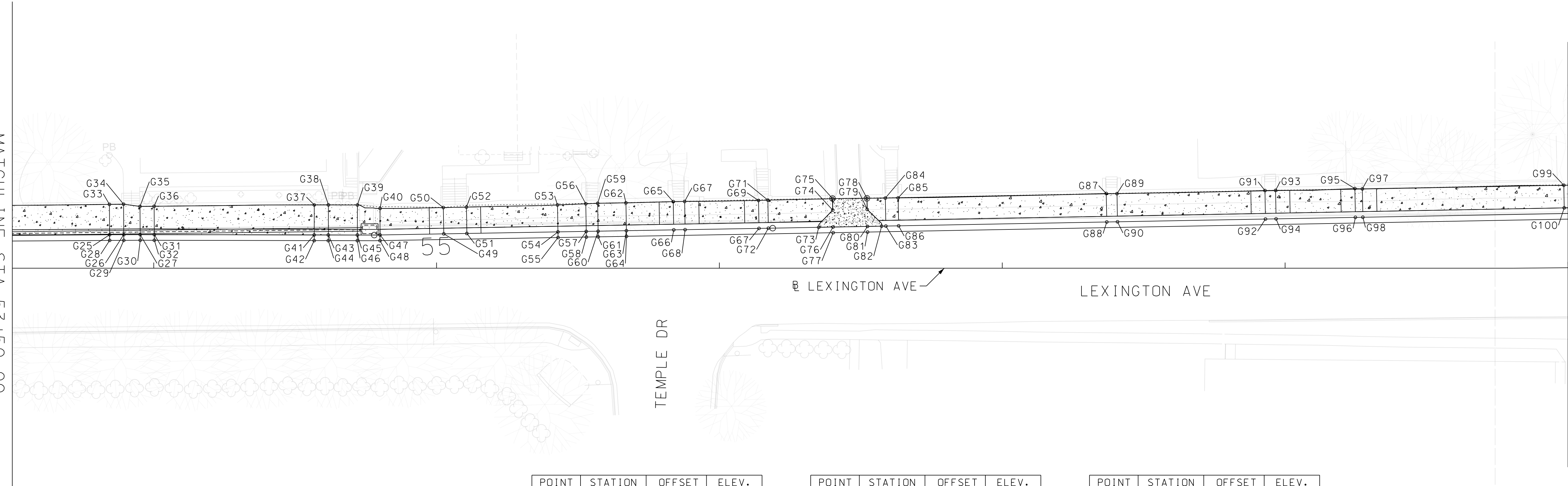
- PROPOSED SHARED-USE PATH
- PROPOSED DRIVEWAY
- PROPOSED SIDEWALK
- PROPOSED CYCLE TRACK
- PROPOSED BRICK PAVER BUFFER

MATCHLINE STA 53+50.00  
SEE SHEET 22

SEE SHEET 24  
MATCHLINE STA 59+00.00



MATCHLINE STA 53+50.00  
SEE SHEET 81



LEXINGTON AVE

MATCHLINE STA 59+00.00  
SEE SHEET 83

- PROPOSED SHARED-USE PATH
- PROPOSED DRIVEWAY
- PROPOSED SIDEWALK
- PROPOSED CYCLE TRACK
- PROPOSED BRICK PAVER BUFFER

POINT	STATION	OFFSET	ELEV.
G25	11+89.13	-11.83	1016.3
G26	11+94.13	-11.87	1016.15
G27	11+99.93	-11.9	1016.21
G28	11+89.14	-9.83	1015.99
G29	11+94.14	-9.87	1016.02
G30	11+99.94	-9.9	1016.05
G31	12+04.93	-11.89	1016.39
G32	12+04.94	-9.89	1016.08
G33	11+89.06	-22.58	1016.41
G34	11+94.06	-22.65	1016.26
G35	11+99.87	-21.86	1016.31
G36	12+04.87	-21.91	1016.49
G37	12+61.47	-22.39	1016.9
G38	12+66.47	-22.4	1016.82
G39	12+76.75	-22.38	1016.86
G40	12+84.75	-21.14	1017.03
G41	12+61.45	-11.77	1016.8
G42	12+61.45	-9.77	1016.48
G43	12+66.45	-11.76	1016.72
G44	12+66.45	-9.76	1016.52
G45	12+76.73	-11.74	1016.76
G46	12+76.72	-9.74	1016.56
G47	12+84.73	-11.76	1016.9
G48	12+84.72	-9.76	1016.59
G49	13+07.27	-12.15	1017.08
G50	13+07.11	-21.46	1017.12
G51	13+15.43	-12.29	1017.12
G52	13+15.27	-21.62	1017.16
G53	13+47.47	-22.38	1017.25
G54	13+47.63	-12.85	1017.32
G55	13+47.67	-10.85	1017.01

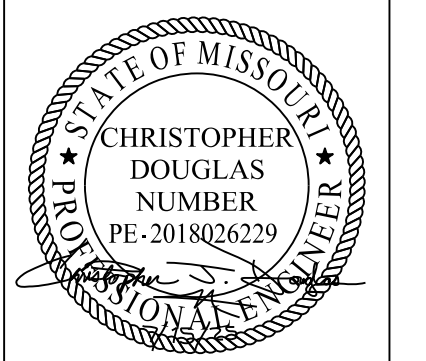
POINT	STATION	OFFSET	ELEV.
G56	13+57.46	-22.79	1017.33
G57	13+57.63	-13.03	1017.23
G58	13+57.67	-11.03	1017.07
G59	13+61.67	-22.95	1017.33
G60	13+61.84	-13.1	1017.23
G61	13+61.87	-11.1	1017.09
G62	13+71.67	-23.12	1017.55
G63	13+71.84	-13.27	1017.45
G64	13+71.87	-11.27	1017.14
G65	13+88.40	-23.54	1017.58
G66	13+88.57	-13.56	1017.52
G67	13+92.42	-23.61	1017.62
G68	13+92.59	-13.63	1017.53
G69	14+18.54	-23.97	1017.68
G70	14+18.71	-14.08	1017.67
G71	14+21.85	-24.08	1017.7
G72	14+22.02	-14.14	1017.69
G73	14+39.82	-14.47	1017.76
G74	14+44.78	-20.56	1017.78
G75	14+44.70	-24.66	1017.77
G76	14+44.89	-14.56	1017.78
G77	14+44.92	-12.56	1017.47
G78	14+56.88	-24.72	1017.97
G79	14+56.95	-20.79	1017.91
G80	14+57.07	-14.79	1017.82
G81	14+57.10	-12.79	1017.51
G82	14+62.06	-14.88	1017.88
G83	14+63.56	-14.91	1017.89
G84	14+63.38	-24.81	1017.99
G85	14+67.90	-24.87	1018
G86	14+68.08	-14.99	1017.9

POINT	STATION	OFFSET	ELEV.
G87	15+41.48	-26.42	1018.38
G88	15+41.67	-16.36	1018.3
G89	15+45.27	-26.37	1018.42
G90	15+45.46	-16.43	1018.31
G91	15+97.58	-27.47	1018.7
G92	15+97.77	-17.4	1018.6
G93	16+01.33	-27.53	1018.73
G94	16+01.52	-17.47	1018.63
G95	16+29.38	-28.17	1018.82
G96	16+29.57	-17.98	1018.79
G97	16+32.02	-28.06	1018.9
G98	16+32.21	-18.03	1018.8
G99	17+03.50	-29.19	1019.58
G100	17+03.58	-21.19	1019.47
G101	17+08.50	-29.24	1019.62
G102	17+08.58	-21.24	1019.54
G103	17+20.72	-29.36	1019.8
G104	17+20.80	-21.36	1019.72
G105	17+22.72	-29.38	1019.74
G106	17+22.80	-21.38	1019.66
G107	17+26.24	-29.41	1019.77
G108	17+26.32	-21.41	1019.69
G109	17+28.71	-19.43	1019.77
G110	17+29.69	-21.44	1019.83

SHEET NO.	82	TOTAL SHEETS	95
DATE PREPARED		10/1/2025	
ROUTE INDEPENDENCE			
COUNTY JACKSON			
CITY MISSOURI			
PROJECT NO.		112102	
FEDERAL PROJECT NO.		STP-3301(524)	

DESCRIPTION	DATE

CITY OF INDEPENDENCE MISSOURI  
MUNICIPAL SERVICES  
**INDEPENDENCE**  
MISSOURI  
111 EAST MAPLE AVE.  
INDEPENDENCE, MO 64050



**WSP**  
WSP USA, INC.  
300 WYANDOTTE STREET  
SUITE 200  
KANSAS CITY, MO 64105

**GEOMETRIC DETAILS**  
STA. 53+50.00 TO STA. 59+00.00