

ADDENDUM NUMBER 003

Project Number **HPP-3303(419) City Project No. 70232201**
Project Title **MLK Pedestrian Bridge**

ISSUE DATE: **October 3, 2025**

Bidders are hereby notified that the Bidding and Contract Documents for the above project, for which Bids are to be received on **October 8, 2025**, are amended as follows:

The Bid date for this Project stated in Document 00130 - Invitation to Bid shall be changed to: 2:00 PM, on **October 22, 2025**.

Information to Bidders The following is provided to Bidders for information only:

1. Form 00412 Unit Prices have been updated and replaced with 'REVISED Form 00412 Unit Prices'.
2. Addendum Number 003 contains the attachment 'RFI UPDATED Revisions'.

Q1.	Drawing E103 on the Luminaire schedule shows different QTY for L05 and L04. Please confirm QTYS.
A1.	Do not refer to the photometric plans for quantities as not all or adjacent fixtures are utilized in this study. Quantities can be found by the contractor doing take-off quantities from the plans, sheets E101 and E102 and verifying that against 'Revised Form 00412 Unit Bid Prices.
Q2.	Please provide Pedestrian light pole details and confirm where the 7 luminaire L05s and 4 ATB2 P902 R2 3K are located on the plans.
A2.	Do not refer to the photometric plans for quantities as not all or adjacent fixtures are utilized in this study. Quantities can be found by the contractor doing take-off quantities from the plans, sheets E101 and E102 and verifying that against 'Revised Form 00412 Unit Bid Prices.

NOTE: Bidders must acknowledge receipt of this Addendum by listing the number and date, where provided, on the Bid Form - Document 00410.

MLK PEDESTRIAN BRIDGE REVISIONS NARRATIVE

OCTOBER 2, 2025

E001: Revised construction note 25.

E002: Updated LFS to reflect current fixture specifications and equivalent manufacturers.

Revised LP1 to include calculated wire sizes.

E101: Updated Pedestrian Bridge Lighting Plan 1/E101 to show conduit routing between type LO5 Pedestrian Poles.

Updated Pedestrian Bridge Lighting Plan 1/E101 to show separate boxes for control wires.

Updated Pedestrian Bridge Lighting Plan 1/E101 to show power supply to fixture type LO4.

E102: Updated North Sidewalk Lighting Plan 2/E102 to show power supply to fixture type LO4.

Updated South Sidewalk and Plaza Lighting Plan 3/E102 to show conduit routing between type LO5 Pedestrian Poles.

Updated South Sidewalk and Plaza Lighting Plan 3/E102 to show separate box for control wires.

Updated South Sidewalk and Plaza Lighting Plan 3/E102 to show power supply to fixture type LO4.

Revised Key Note 5 to include calculated wire sizes.

E202: Revised Conduit Routing Diagram Detail 1/E202 to include separate box for control wires, and to accurately display number of conduits exiting junction box.

Added NEW Pole Elevation Detail 2/E202.

G:\shortcut-targets-by-id\0B0bBcXP_fenHLVF520VQVU4T2M\LightWorks Server\Projects\2509 MLK Pedestrian Bridge Final Design\02 E Drawings\03 CAD\EO-XX Coversheet_MLK Pedestrial Bridge.dwg Oct 02, 2025 -- 1:15pm

ABBREVIATIONS										CONSTRUCTION NOTES										STATE		FEDERAL PROJECT NO. / CITY PROJECT NO.		SHEET NO.							
<div><div><div><div>A</div><div>AMPERES, AIR (COMPRESSED)</div></div><div><div>AWG</div><div>AMERICAN WIRE GAUGE</div></div><div><div>C</div><div>CONDUIT</div></div><div><div>CKT</div><div>CIRCUIT</div></div><div><div>EC</div><div>ELECTRICAL CONTRACTOR</div></div><div><div>ETR</div><div>EXISTING TO REMAIN</div></div><div><div>GC</div><div>GENERAL CONTRACTOR</div></div><div><div>G, GND</div><div>GROUND</div></div><div><div>JB, J-BOX</div><div>JUNCTION BOX</div></div><div><div>kcmil</div><div>1000 CIRCULAR MILS</div></div><div><div>kV</div><div>KILOVOLT</div></div><div><div>kVA</div><div>KILOVOLT-AMPS</div></div><div><div>kW</div><div>KILOWATT</div></div><div><div>kWH</div><div>KILOWATT-HOUR</div></div><div><div>LF</div><div>LINEAR FEET</div></div><div><div>OC</div><div>ON CENTER</div></div><div><div>N/A</div><div>NOT APPLICABLE</div></div><div><div>NIC</div><div>NOT IN CONTRACT</div></div><div><div>PH, Ø</div><div>PHASE</div></div><div><div>PROVIDE</div><div>FURNISH AND INSTALL</div></div><div><div>QTY</div><div>QUANTITY</div></div><div><div>REV</div><div>REVISION</div></div><div><div>U/G</div><div>UNDERGROUND</div></div><div><div>UL</div><div>UNDERWRITERS LABORATORIES, INC.</div></div><div><div>UNO</div><div>UNLESS NOTED OTHERWISE</div></div><div><div>V</div><div>VOLT(S)</div></div><div><div>VAC</div><div>VOLTS ALTERNATING CURRENT</div></div><div><div>VDC</div><div>VOLTS DIRECT CURRENT</div></div><div><div>W</div><div>WIRE</div></div><div><div>WP</div><div>WEATHERPROOF</div></div><div><div>XFMR</div><div>TRANSFORMER</div></div><div><div>XL</div><div>EQUIPMENT LOCATION TO BE RELOCATED. RE: NEW PLANS</div></div><div><div>XN</div><div>NEW LOCATION OF RELOCATED EQUIPMENT</div></div></div></div>										<div><div>1. ALL WORK SHALL COMPLY WITH THE KANSAS CITY, MO, DEPARTMENT OF PUBLIC WORKS STANDARD CONSTRUCTION AND MATERIALS SPECIFICATION, DIVISION II / SECTION 2800, DIVISION V / SECTION 5800, AND ANY SUPPLEMENTAL CHANGES UNLESS OTHERWISE SPECIFIED OR SHOWN ON THE PLANS EXCEPT AS NOTED BELOW: EXCEPTIONS: 1. NONE</div><div>2. POLE FOUNDATIONS SHALL BE INSTALLED PER APWA SECTION 2802, STANDARD DRAWINGS UNLESS NOTED OTHERWISE ON PLANS.</div><div>3. DISTRIBUTION CABLE SHALL BE PER PLANS TYPE RHH/RHW/USE, 600 VOLT, COPPER STRANDED AND COLOR CODED BLACK, RED (OR BLACK) AND GREEN (APWA 2802, 10) FOR A GROUNDED 240 VOLT SYSTEM (SINGLE PHASE), CABLE USED WITHIN THE POLES SHALL BE 3-#10, TYPE RHW/USE, 600 VOLTS RATED, COPPER STRANDED, U.L. LISTED AND COLOR-CODED RED, BLACK, AND GREEN ACCORDING TO THE NEC.</div><div>4. INDIVIDUAL AND SYSTEM GROUNDS SHALL BE INSTALLED ON ALL CIRCUITS. GROUNDING SHALL COMPLY WITH SECTION 2808.8 OF STANDARDS NOTED ABOVE AND WITH THE MOST CURRENT EDITION OF THE NEC.</div><div>5. ALL CONDUIT CROSSINGS SHALL BE INDICATED WITH AN ALUMINUM MARKER IN THE TOP OF CURB. ALUMINUM MARKERS TO BE FURNISHED AND INSTALLED BY THE CONTRACTOR. CONTACT ELECTRICAL MIDWEST (913) 599-1000. RE: ELECTRICAL DETAILS.</div><div>6. THE CONTRACTOR IS RESPONSIBLE FOR MAKING HIS OWN DETERMINATION AS TO TYPE AND LOCATION OF UNDERGROUND AND OVERHEAD UTILITIES AS MAY BE NECESSARY TO AVOID DAMAGE. THE CONTRACTOR SHALL VERIFY LOCATION OF UNDERGROUND PIPE LINES, CONDUITS, STRUCTURES AND OVERHEAD LINES BY CONTACTING THE OWNERS OF THE UTILITIES. THE UTILITIES AS SHOWN ON THIS DRAWING WERE DEVELOPED FROM THE INFORMATION AVAILABLE. THIS IS NOT IMPLIED NOR INTENDED TO BE THE COMPLETE INVENTORY OF THE UTILITIES IN THIS AREA. IT IS THE CONTRACTOR'S RESPONSIBILITY TO VERIFY THE LOCATION OF ALL UTILITIES (WHETHER SHOWN OR NOT) AND PROTECT SAID UTILITIES FROM ANY DAMAGE. CONTRACTOR SHALL CALL 1-800-DIG-SAFE PRIOR TO PROJECT EXCAVATION. CONTRACTOR SHALL HAVE ALL UTILITIES LOCATED BY THE RESPECTIVE UTILITY OWNERS PRIOR TO ANY ON-SITE EXCAVATION. KEY LOCATIONS AS NOTED SHALL BE LOCATED VERTICALLY BY UTILITY OWNERS AND/OR UTILITY OWNER SHALL BE PRESENT ON-SITE FOR LOCATION PRIOR TO EXCAVATION. CONTRACTOR SHALL COORDINATE ANY UTILITY CONFLICTS WITH RESPECTIVE UTILITY COMPANY, THE CITY, AND THE ENGINEER. REQUIRED RELOCATES WILL BE PAID BY THE CONTRACTOR.</div><div>7. ALL WORKMANSHIP AND MATERIALS SHALL BE SUBJECT TO INSPECTION AND APPROVAL OF THE KANSAS CITY, MISSOURI, STREETLIGHTING, PUBLIC WORKS DEPARTMENT. COORDINATE A FINAL JOINT INSPECTION WITH OCTAVIO MONCADA (816) 513-9850.</div><div>8. CONTRACTOR SHALL BE RESPONSIBLE FOR OBTAINING REQUIRED PERMITS, PAYMENTS OF ALL FEES AND FOR OTHERWISE COMPLYING WITH ALL APPLICABLE REGULATIONS GOVERNING THE WORK.</div><div>9. ALL CONSTRUCTION OF IMPROVEMENTS SHALL CONFORM TO THE CURRENT STANDARDS AND SPECIFICATIONS OF THE CITY OF KANSAS CITY, MISSOURI, AND OF THE KANSAS CITY METROPOLITAN CHAPTER OF THE AMERICAN PUBLIC WORKS ASSOCIATION.</div><div>10. CONTRACTOR SHALL FIELD CHECK ALL DIMENSIONS, COORDINATES AND ELEVATIONS BEFORE PROCEEDING WITH NEW WORK. NOTIFY THE ENGINEER OF ANY DISCREPANCIES IMMEDIATELY. NO NEW CONSTRUCTION SHOULD BE PERFORMED BY 'SCALING' FROM THE PLANS.</div><div>11. THE CONTRACTOR SHALL INSTALL A CABLE RETAINER ASSEMBLY MOUNTED BETWEEN A LUMINAIRE TYPE POLE AND FOUNDATION ANCHOR. THE RETAINER IS DESIGNED TO SECURE THE ELECTRICAL CONDUCTORS TO PREVENT CONDUCTOR THEFT. RE: ELECTRICAL DETAILS.</div><div>12. PULL AND JUNCTION BOXES SHALL BE PLACED AS SHOWN ON THE APPROVED PLANS, SPECIAL PROVISIONS, STANDARD DRAWINGS AND CONTRACT DOCUMENTS. BOXES SHALL BE INSTALLED AS RECOMMENDED BY THE MANUFACTURER. PULL AND JUNCTION BOXES SHALL BE SIZED TO MEET THE FILL AND BENDING RADIUS REQUIREMENTS OF THE NFPA 70 (NEC). PULL AND JUNCTION BOXES SHALL BE HEAVY DUTY, PRECAST POLYMER CONCRETE, AND SHALL MEET THE LATEST REVISION OF ANSISCTE77 WITH TIER 8 PERFORMANCE SPECIFICATION REQUIREMENTS FOR BOTH BOX AND COVER. COVERS FOR PULL BOXES SHALL HAVE TEXT STATING 'STREET LIGHTING' AND INDICATE THE TIER DESIGNATION OF THE BOX. IN JOINT USE BOXES, CONDUCTORS SHALL BE CLEARLY AND PERMANENTLY TAGGED AS STREETLIGHT CONDUCTORS. TO AVOID CONDUCTOR THEFT, A CONDUCTOR RUN SHALL NOT TERMINATE IN A PULL OR JUNCTION BOX AT BOTH ENDS. COVERS SHALL BE SECURED WITH VANDAL-RESISTANT BOLTS.</div><div>13. DURING THE PERIOD OF ONE YEAR FROM THE DATE OF FINAL ACCEPTANCE BY THE THE CITY OF KANSAS CITY, MISSOURI, THE CONTRACTOR IS RESPONSIBLE FOR MAKING ANY NECESSARY REPAIRS ARISING OUT OF DEFECTIVE WORKMANSHIP OR MATERIALS. THE CONTRACTOR SHALL CONDUCT AN INSPECTION OF THIS PROJECT 11 MONTHS AFTER THE PROJECT HAS BEEN ACCEPTED TO DETERMINE WHAT REPAIRS NEED TO BE MADE.</div><div>14. CONTRACTOR SHALL GIVE NOTICE TO THE CITY, POLICE, AND UTILITY DEPARTMENTS 48 HOURS IN ADVANCE OF BEGINNING CONSTRUCTION WORK ON ANY EXISTING STREET. NO EXCAVATION SHALL BE LEFT UNATTENDED AND UNPROTECTED.</div><div>15. CONTRACTOR SHALL NOT REMOVE ANY TREE OR FENCE UNLESS OTHERWISE MARKED FOR REMOVAL ON THE PLANS WITHOUT PRIOR APPROVAL.</div><div>16. WHERE PIPE IS TO BE INSTALLED IN AREAS OF FILL, SOIL SHALL BE COMPACTED TO 90% OF STANDARD PROCTOR TO A MINIMUM OF 18" ABOVE THE TOP OF THE PIPE PRIOR TO EXCAVATION OF TRENCH.</div><div>17. NO STONES GREATER THAN 1 FOOT ALONG THE LONGEST AXIS WILL BE ALLOWED IN TRENCH BACKFILL.</div><div>18. POLE RELOCATIONS: ALL RELOCATIONS SHALL BE APPROVED BY THE CITY LIGHTING ENGINEER. PRIOR TO CONSTRUCTION, THE CITY INSPECTOR SHALL VERIFY THE POLE INSTALLATIONS STAKED BY THE CONTRACTOR. THE POLE MUST BE INSTALLED PERPENDICULAR TO THE STREET AND 2FT OR 3FT BEHIND BACK OF CURB TO MATCHING EXISTING SETBACK. MINIMUM ADA SIDEWALK CLEARANCES SHALL BE MAINTAINED.</div><div>19. THE STREETLIGHT LAYOUT WAS BASED ON THE FOLLOWING: TYPE C: SIGNIFY LUMEC RFL 145W64LED(3K) G2 R2M UNV DMG API PH9 RCD7 SP2 BK (137 WATT), MULTI-VOLT, TYPE II OPTICS, 20KV SPD, 7 PIN RECEPTACLE, AND DIMMABLE DRIVER WITH SHORTING CAP, BLACK FINISH OR APPROVED EQUAL.</div><div>20. ALL UTILITY LOCATES SHALL BE ORDERED BY THE CONTRACTOR. PRIOR TO ANY CONSTRUCTION, THE ENGINEER SHALL APPROVE ANY CHANGES TO THE PLANS DUE TO UTILITY OR OTHER CONFLICTS. THE CONTRACTOR WILL BE RESPONSIBLE FOR REPAIRING ALL STREET LIGHTING EQUIPMENT AND UTILITIES DAMAGED DURING THE CONSTRUCTION OF THE PROJECT. ANY DAMAGE CAUSED BY THE CONTRACTOR'S CONSTRUCTION OPERATION TO EXISTING LIGHTING EQUIPMENT AND UTILITIES SHALL BE REPAIRED BY THE APPROPRIATE UTILITY AT THE CONTRACTOR'S EXPENSE.</div><div>21. CABLE AND CONDUIT: ALL DISTRIBUTION CABLE SHALL BE INSTALLED IN SCHEDULE 80, 2" PVC CONDUIT OR IN PREASSEMBLED "CABLE-IN-DUCT." MATCH EXISTING CABLE SIZE AND TYPE. ALL CONDUIT RUNS SHALL BE PLACED 2FT FROM BACK OF CURB WHERE POSSIBLE AND AT A MINIMUM DEPTH OF 24". ALL SPLICES MUST BE DONE IN THE POLE BASE OR PULL BOX. NO MID-SPAN SPLICES OR BURIED SPLICES ARE ALLOWED. MATCH EXISTING DISTRIBUTION CABLE.</div><div>22. PROVIDE AND INSTALL IN EACH POLE BASE, 3 SINGLE-POLE, SET-SCREW, IN-LINE, BREAKAWAY, FUSEHOLDERS. USE BUSSMAN (OR APPROVED EQUAL) MODEL NO. HEB-JQ-RYC AND HEB-JW-RLC-J (LAST POLE). FOR THE 2 "HOT" BREAKAWAY CONDUCTORS, PLACE A 10 AMP KTK FUSE IN EACH BREAKAWAY FUSEHOLDER AND A NNB COPPER SLUG IN THE SYSTEM GROUND FUSEHOLDER.</div><div>23. THE CONTRACTOR SHALL BE RESPONSIBLE FOR THE TEMPORARY STORAGE OF MATERIALS, MAINTAINING, AND REPLACING MATERIALS (IN LIKE KIND) DAMAGED DURING THE CONSTRUCTION CONTRACT.</div><div>24. THE CONTRACTOR IS RESPONSIBLE FOR ALL RESTORATION OF THE CONSTRUCTION SITE TO CITY SPECIFICATIONS AT NO ADDITIONAL COST. CONTRACTOR IS ALSO RESPONSIBLE FOR ALL COSTS ASSOCIATED WITH ANY DAMAGE, INCLUDING BUT NOT LIMITED TO LANDSCAPING, SPRINKLER SYSTEMS, WATER, SEWER, CURB AND SIDEWALK, GAS MAIN, ETC., CAUSED BY THE CONSTRUCTION.</div><div>25. THE ELECTRICAL CONTRACTOR SHALL SIZE ALL RACEWAYS AND CONDUITS IN ACCORDANCE WITH THE LATEST ADOPTED EDITION OF THE NATIONAL ELECTRICAL CODE (NEC) AND ALL APPLICABLE LOCAL CODES. CONDUIT SIZES SHALL BE BASED ON THE FINAL CONSTRUCTED CONDITION OF THE SYSTEM, INCLUDING ALL CONDUCTORS, CONTROL/LOW-VOLTAGE CABLES, GROUNDING/BONDING CONDUCTORS, AND END TERMINATIONS TO BE INSTALLED. NO CONDUIT SHALL BE SMALLER THAN 3/4" TRADE SIZE. PROVIDE ADJUSTMENTS AS REQUIRED TO ENSURE COMPLIANCE WITH NEC CHAPTER 9 AND ALL APPLICABLE INSTALLATION STANDARDS.</div></div>										MO				HPP-3303(419) / 70232201				E001			
LIGHTING SYMBOL LEGEND																															
<div><div><div><div><div><div></div><div></div></div><div>EXISTING POLE, BASE, ARM, AND LUMINAIRE TO REMAIN.</div></div><div><div><div><div>XR</div><div>KCMO#</div><div>CKT#</div></div><div>DEMOLITION NOTE</div><div>EXISTING POLE NUMBER</div><div>EXISTING CIRCUIT NUMBER (IF APPLICABLE)</div></div></div><div><div><div><div></div><div></div></div><div>NEW ROADWAY LIGHTING POLE LOCATION. RE: PLANS AND SCHEDULES.</div></div><div><div><div><div>#</div><div>KCMO#</div><div>CKT#</div></div><div>NEW FIXTURE NUMBER</div><div>NEW KCMO POLE NUMBER FOR ID TAG</div><div>NEW CIRCUIT NUMBER</div></div></div></div></div></div></div>																															
<div><div><div><div><div><div></div><div></div></div><div>ELECTRICAL PANELBOARD (SURFACE MOUNT)</div></div><div><div><div><div></div><div></div></div><div>TIME CLOCK</div></div><div><div><div><div></div><div></div></div><div>PHOTOCELL</div></div><div><div><div><div></div><div></div></div><div>SWITCH LETTER DESIGNATIONS AS FOLLOWS: OS = OCCUPANCY SENSOR M = MOTOR SWITCH 3 = 3-WAY SWITCH</div></div></div><div><div><div><div><div></div><div></div></div><div>DUPLEX RECEPTACLE - NEMA 5-20R, UNO</div></div><div><div><div><div></div><div></div></div><div>DOUBLE DUPLEX RECEPTACLE - NEMA 5-20R, UNO</div></div><div><div><div><div><div></div><div></div></div><div>RECEPTACLE LETTER DESIGNATIONS AS FOLLOWS: GFCI = GROUND FAULT CIRCUIT INTERRUPTER WP = WEATHERPROOF</div></div></div></div></div></div><div><div><div><div><div></div><div></div></div><div>JUNCTION BOX</div></div><div><div><div><div><div></div><div></div></div><div>HOMERUN TO PANELBOARD, ARROWS INDICATE NUMBER OF CIRCUITS, HASH MARKS INDICATE NUMBER OF CONDUCTORS.</div></div><div><div><div><div></div><div></div></div><div>INFORMATION AT ARROWS ARE CIRCUIT NUMBERS AND PANELBOARD.</div></div><div><div><div><div></div><div></div></div><div>EQUIPMENT GROUNDING CONDUCTOR IN CONDUIT (GREEN INSULATION OR BARE)</div></div><div><div><div><div></div><div></div></div><div>CONDUIT CONCEALED</div></div><div><div><div><div></div><div></div></div><div>CONDUIT IN/UNDER FLOOR/GROUND CONSTRUCTION</div></div><div><div><div><div></div><div></div></div><div>EXPOSED CONDUIT</div></div><div><div><div><div></div><div></div></div><div>OVERHEAD WIRE</div></div><div><div><div><div></div><div></div></div><div>TELEPHONE/DATA CONDUIT</div></div><div><div><div><div></div><div></div></div><div>CONDUIT TURNING UP</div></div></div><div><div><div><div><div></div><div></div></div><div>LINEAR LUMINAIRE: (SEE LUMINAIRE SCHEDULE) A = LUMINAIRE TYPE "A"</div></div><div><div><div><div><div></div><div></div></div><div>LUMINAIRE - CEILING / WALL MOUNTED. A = LUMINAIRE TYPE "A"</div></div><div><div><div><div><div></div><div></div></div><div>LUMINAIRE - INGRADE UPLIGHT. A = LUMINAIRE TYPE "A" ETR = EXISTING TO REMAIN</div></div></div></div></div></div><div><div><div><div><div></div><div></div></div><div>POWER POLE</div></div><div><div><div><div></div><div></div></div><div>METER</div></div><div><div><div><div></div><div></div></div><div>TRANSFORMER</div></div></div></div></div></div></div></div></div></div></div></div></div></div></div></div></div></div></div></div></div></div></div></div></div>																															

G:\shortcut-targets-by-id\0B0bBoxP_fenHLVF520VQVU14T2M\LightWorks Server\Projects\2509 MLK Pedestrian Bridge Final Design\02 E Drawings\03 CAD\EO-XX Coversheet_MLK Pedestrial Bridge.dwg Oct 02, 2025 -- 1:15pm

STATE	FEDERAL PROJECT NO. / CITY PROJECT NO.	SHEET NO.
MO	HPP-3303(419) / 70232201	E002

LIGHTING FIXTURE SCHEDULE											
SYMBOL	MANUFACTURER	MODEL #	LAMP	COLOR TEMP	DIMMING	WATTS	VOLTAGE	FINISH	DESCRIPTION	LOCATION	NOTES
LO1a	ECOSENSE OR EQUIVALENT BY INTERLUX OR GVA	F080 1S MO 30 8 40 F / LDCM-PL-120-277-0010V-GR	LED, 731 LUMENS	3000K, 80CRI	0-10V, 5%	7.5 W	110-277	TBD	2.5" BY 2.5" BY 4.72" LONG COMPACT ADJUSTABLE LED DOWNLIGHT, WITH 40 DEGREE BEAM. IP66 RATED FOR EXTERIORS. DIMMABLE TO 5%.	BRIDGE DOWNLIGHT	REF: DETAIL 1/E201
LO1b	ECOSENSE OR EQUIVALENT BY INTERLUX OR GVA	F080 1S HO 30 8 E2 F / LDCM-PL-120-277-0010V-GR	LED, 583 LUMENS	3000K, 80CRI	0-10V, 5%	11.5 W	110-277	TBD	2.5" BY 2.5" BY 4.72" LONG COMPACT ADJUSTABLE LED DOWNLIGHT, WITH 30X50 ELLIPTICAL BEAM. IP66 RATED FOR EXTERIORS. DIMMABLE TO 5%.	BRIDGE DOWNLIGHT	REF: DETAIL 1/E201
LO1c	ECOSENSE OR EQUIVALENT BY INTERLUX OR GVA	F080 1S MO 30 8 90 F / LDCM-PL-120-277-0010V-GR	LED, 523 LUMENS	3000K, 80CRI	0-10V, 5%	7.5 W	110-277	TBD	2.5" BY 2.5" BY 4.72" LONG COMPACT ADJUSTABLE LED DOWNLIGHT, WITH 90 DEGREE BEAM. IP66 RATED FOR EXTERIORS. DIMMABLE TO 5%.	BRIDGE DOWNLIGHT	REF: DETAIL 1/E201
LO2	LUMASCAPE OR APPROVED EQUIVALENT BY COLOR KINETICS	LS9260-16D-4CA-67-DC-Q-13-PS-XX / LS6327 / LS6550-2D	LED, 1080 LUMENS	RGBA	DMX	20 W	100-240	TBD	NOMINAL 6" ROUND SURFACE MOUNTED EXTERIOR RATED RGBA LED POINT OF LIGHT. SUITED FOR DIRECT VIEW APPLICATIONS. IP66 RATED FOR EXTERIORS, DMX CONTROLLED.	BRIDGE ARCH	REF: DETAIL 2/E201
LO3	COLOR KINETICS OR EQUIVALENT BY GVA OR INSIGHT	423-000036-29 / 120-000216-04	LED, 555 LUMENS/FT	RGBA	DMX	8.3 W/FT	100-277	TBD	1.66" WIDE BY 48.06" LONG RGBA LED LINEAR PROJECTOR WITH 30X60 OPTICS. IP66 EXTERIOR RATED AND DMX CONTROLLED.	BRIDGE FINS	REF: DETAIL 3/E201
LO4	INTERLUX OR APPROVED EQUIVALENT BY ERCO OR IGUZZINI	XE RAF F 36 22 IND 30 NFL E99763	LED, 528.67 LUMENS/FT	3000K, 80CRI	NA	7.5 W/FT	120-277	SILVER	NOMINAL 1.6" WIDE BY 36.2" LONG RECESSED LINEAR LED WITH NARROW FLOOD OPTICS. INTEGRAL DRIVER, RATED IP67.	MLK SIGNAGE UPLIGHT	REF: DETAIL 3/E202
LO5	KIM LIGHTNG OR EQUIVALENT BY GARDCO	1SA SARA2 27L 695 3K8 3 UNV / PRA-14-4125-SA-DBT	LED, 6000 LUMENS	3000K, 80CRI	N/A	59 W	120-277	BRONZE	12" BY 17.125" LED SITE LIGHT MOUNTED ON 4" ROUND STRAIGHT 14' POLE. FIXTURE SHALL BE TYPE 3 DISTRIBUTION.	PEDESTRIAN POLE	REF: DETAIL 5/E202

GENERAL NOTES:

- A. MANUFACTURER TO PROVIDE PROJECT SPECIFIC SHOP DRAWINGS SHOWING EXACT MOUNTING, FINISH, LENGTH, SHAPE AND LAMPING OF LUMINAIRE. VERIFY CEILING CONDITIONS AND COORDINATE LIGHT FIXTURE MOUNTING HARDWARE AND TRIMS NEEDED TO SUIT CEILING CONDITIONS PRIOR TO ORDERING.
- B. VERIFY FINISH AND COLOR WITH ARCHITECT PRIOR TO PLACING ORDER.

LIGHTING COLOR CONTROLLER SCHEDULE							
SCENE	DESCRIPTION	DOWNLIGHTS (LO1)	ARCH (LO2)	FINS EAST (LO3)	FINS WEST (LO3)	SIGNAGE (LO4)	PEDESTRIAN LIGHTS (LO5)
1	CHIEFS	PC/TC	CHIEFS RED	CHIEFS YELLOW	CHIEFS YELLOW	PC/TC	PC/TC
2	ROYALS	PC/TC	WHITE	ROYALS BLUE	ROYALS BLUE	PC/TC	PC/TC
3	CURRENT	PC/TC	HEARTLAND RED	TEAL	TEAL	PC/TC	PC/TC
4	SPORTING KC	PC/TC	LIGHT BLUE	LIGHT BLUE	LIGHT BLUE	PC/TC	PC/TC
5	ST PATRICKS DAY	PC/TC	GREEN	GREEN	GREEN	PC/TC	PC/TC
6	BLACK HISTORY R G Y	PC/TC	XXX	XXX	XXX	PC/TC	PC/TC
7	PINK (VALENTINES, BREAST CANCER)	PC/TC	PINK	PINK	PINK	PC/TC	PC/TC
8	BLACK HISTORY MONTH	PC/TC	YELLOW	RED	GREEN	PC/TC	PC/TC
9	PATRIOTIC	PC/TC	BLUE	RED	RED	PC/TC	PC/TC
10	ALL WHITE	PC/TC	WHITE	WHITE	WHITE	PC/TC	PC/TC




* PC/TC = PHOTOCELL ON / TIMECLOCK OFF

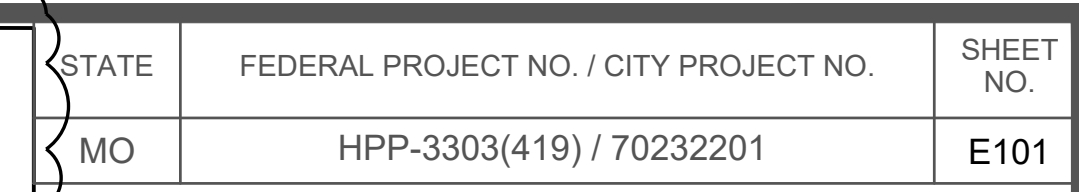
LIGHTING CONTROL ZONE SCHEDULE					
ZONE #	DESCRIPTION	FIXTURE TAG	CIRCUIT	CONTROL	RGBW CHANNELS
1	DOWNLIGHTS	LO1	LP1-1	ON/OFF	1
2	ARCH NORTH	LO2	LP1-3	RGBW	4
3	ARCH SOUTH	LO2	LP1-3	RGBW	4
4	FINS EAST	LO3	LP1-2	RGBW	4
5	FINS WEST	LO3	LP1-4	RGBW	4
6	SIGNAGE	LO4	LP1-5	ON/OFF	1
7	PEDESTRIAN LIGHTS SOUTH	LO5	LP1-6	ON/OFF	1
TOTAL DMX CHANNELS:					19

PANEL LP1		120/ 208	L-G VOLTS	100	A. BUS	SERVICE ENTRANCE
		120	L-L VOLTS			
		1	PHASE	100	A. MAIN BREAKER	SUBFEED LUGS
		3	WIRE			MAIN LUGS ONLY
			FT	X	SURFACE MOUNTING	FLUSH MOUNTING
FEEDER LENGTH						

CIRC. NO.	CIRCUIT DESCRIPTION	CIRC. BRKR. AMPS	POLES	WIRE SIZE	LOAD	CONNECTED PER PHASE A	B	LOAD	WIRE SIZE	CIRC. BRKR. AMPS	POLES	CIRCUIT DESCRIPTION	CIRC. NO.
1	Bridge Downlights	20	1	8CU	80	1450		1370	8CU	20	2	Bridge Fins East	2
3	Bridge Dots	20	1	6CU	400		1770	1370					4
5	Signage	20	1	8CU	36	1406		1370					6
7	Control	20	1	8CU	100		1470	1370	8CU	20	2	Bridge Fins West	8
9	Spare	20	1		0	0		0	12CU	20	1	South Ped Poles	10
11	Space Only				0	0	0	0				Space Only	12
		SUBTOTAL CONNECTED LOAD		WATTS		2856	3240		WATTS				

TOTAL CONNECTED LOAD (VA)	=	6096	TC=PHOTOCELL ON/TIMECLOCK OFF
TOTAL CONNECTED LOAD (A)	=	29.31	GFI = GROUND FAULT INTERRUPTER
TOTAL PANELBOARD DEMAND (VA)	=	7620	PC=PHOTOCELL
TOTAL PANELBOARD DEMAND (AMPS)	=	36.63	

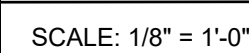
			T & B Project No. 64-0350		File Name: MOD-T&B BORDER-SHEET - 22X34.DWG								Taliaferro & Browne, Inc. Civil / Structural Engineering, Landscape Architecture & Surveying 1020 E. 8th STREET KANSAS CITY, MISSOURI 64106 PH (816) 283-3456 FAX (816) 283-0810 PROFESSIONAL ENGINEERING CORPORATION MISSOURI LICENSE NO. 000466 KANSAS LICENSE NO. E-1481 PROFESSIONAL LAND SURVEYING CORPORATION MISSOURI LICENSE NO. 000694		MLK PARK PEDESTRIAN BRIDGE KANSAS CITY, MISSOURI		ELECTRICAL SCHEDULES		NOT FOR CONSTRUCTION		Kathi Vandel Engineer License No.: E-2000147833	
			DESIGNED BY: KV		DATE OF ORIGINAL ISSUE: 07/25/2025																	
			DRAWN BY: MH																			
			CHECKED BY: KV																			
					THE PROFESSIONAL WHOSE SIGNATURE AND PERSONAL SEAL APPEARS ON THIS SHEET ASSUMES RESPONSIBILITY ONLY FOR WHAT APPEARS ON THIS PAGE, AND DISCLAIMS (PURSUANT TO SECTION 327.411 RDMO) ANY RESPONSIBILITY OF ALL OTHER PLANS, SPECIFICATIONS, ESTIMATES, REPORTS OR OTHER DOCUMENTS OR INSTRUMENTS NOT SEALED BY THE UNDERSIGNED PROFESSIONAL RELATING TO OR INTENDED TO BE USED FOR ANY PART OR PARTS OF THE PROJECT TO WHICH THIS PAGE REFERS.		OLSSON - LANDSCAPE ARCHITECTURE MO CERTIFICATE OF AUTHORITY #:2005000285 1814 Main St. Kansas City, MO 64108				Project # 022-01892											
DATE			REVISIONS AND RECORD OF ISSUE			NO. BY CK APP											DWG NO.: E002					



1 REFERENCE DETAIL 3/E102 FOR MORE INFORMATION.

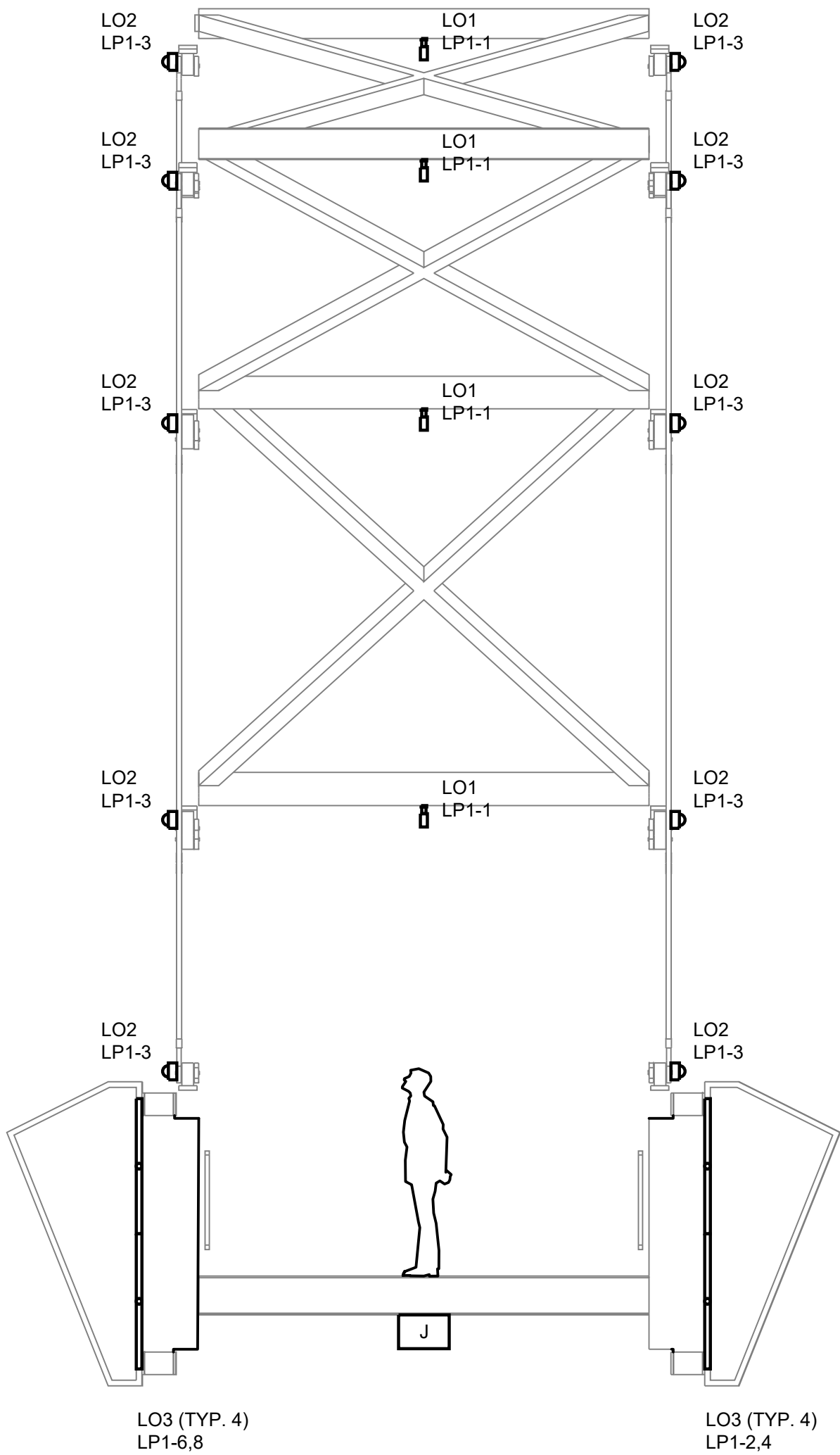
2 REFERENCE DETAIL 2/E102 FOR MORE INFORMATION.

SCALE: 1/16" = 1'-0"



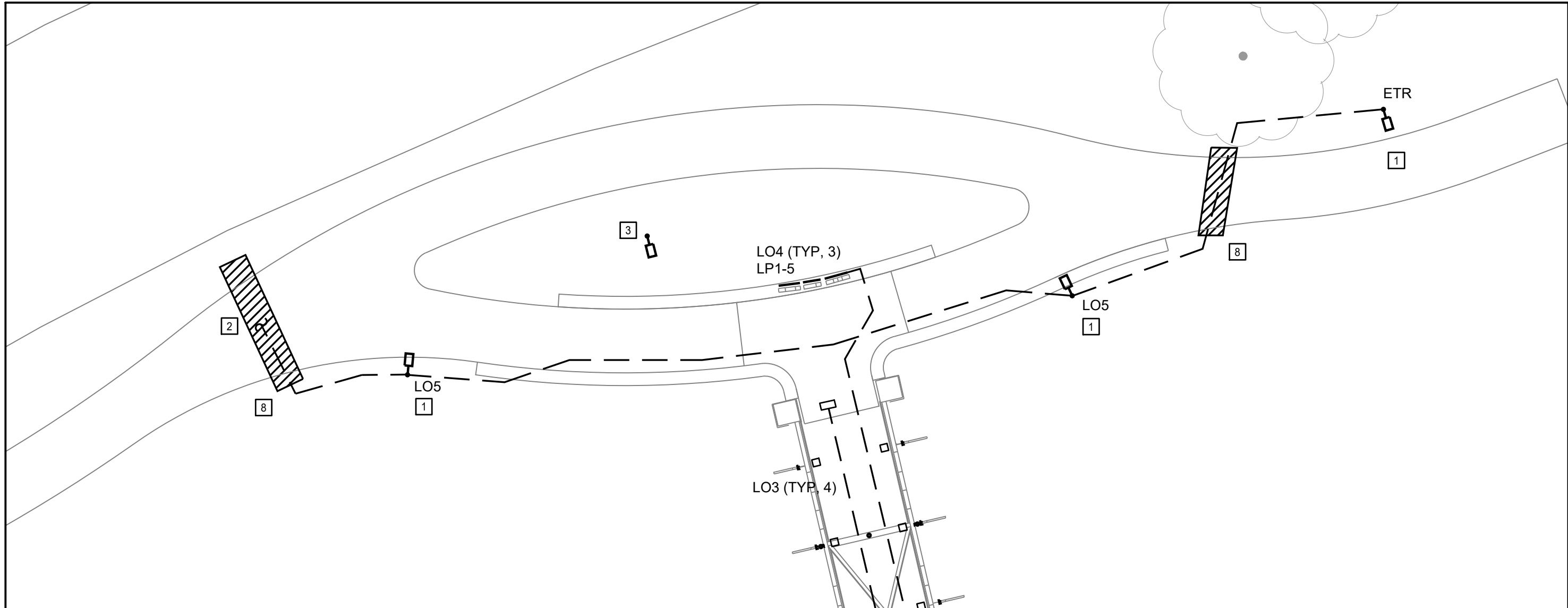
© 2009 Taliaferro & Browne, Inc.

G:\shortcut-targets-by-id\0B0bBoxP_fenHLVF520VQVUt4TZM\LightWorks Server\Projects\2509 MLK Pedestrian Bridge Final Design\02 E Drawings\03 CAD\EX-XX MLK Pedestrian Bridge Final Design.dwg Oct 02, 2025 -- 1:16pm



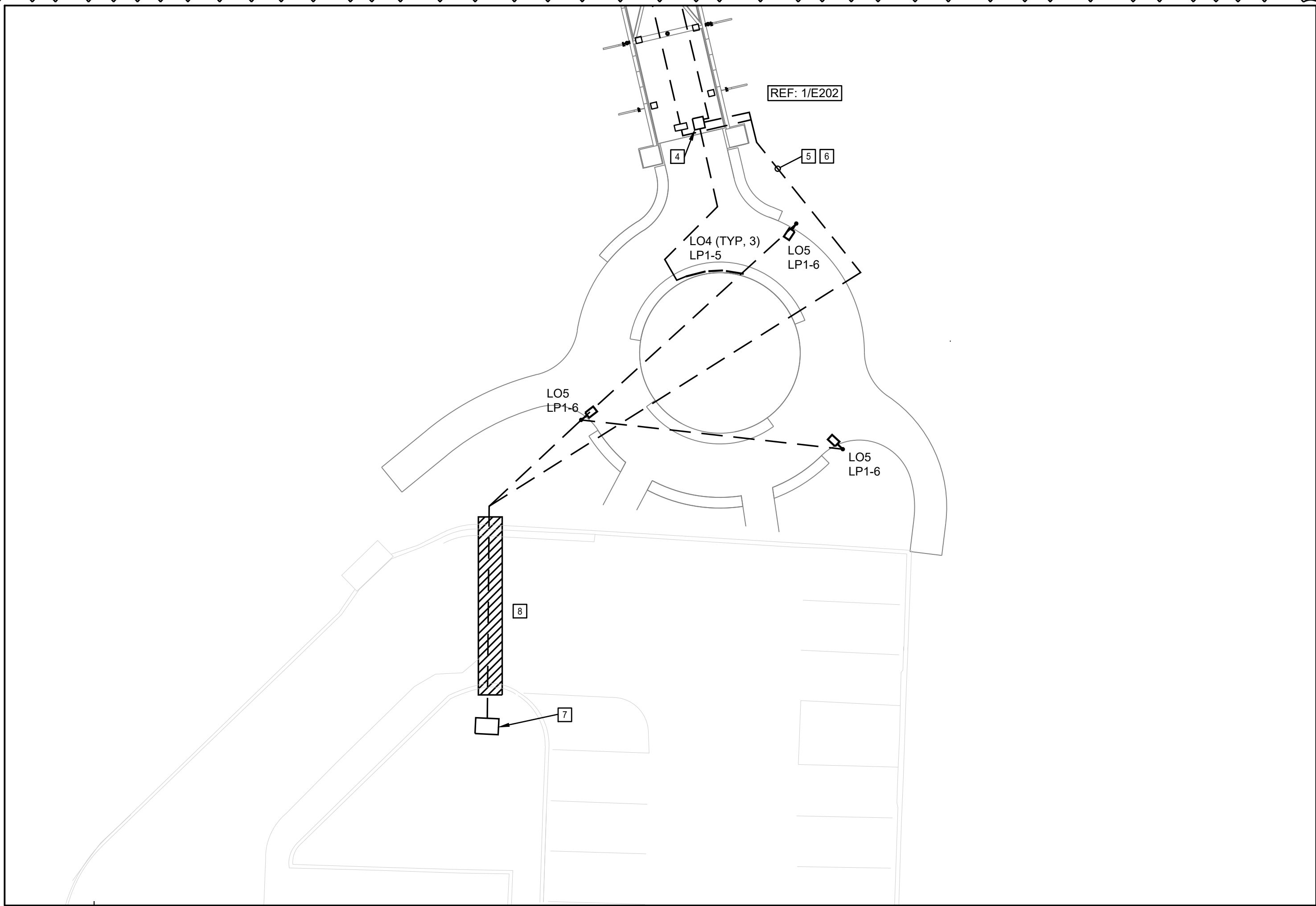
1 PEDESTRIAN BRIDGE SECTION

SCALE: 1/8" = 1'-0"



2 NORTH SIDEWALK

SCALE: 1/16" = 1'-0"



3 SOUTH SIDEWALK AND PLAZA

SCALE: 1/16" = 1'-0"

KEY NOTES

- 1 INTERCEPT EXISTING PEDESTRIAN LIGHTING CIRCUIT AND CONNECT NEXT LO5 LUMINAIRES ON NORTH SIDE.
- 2 CONNECT TO NEXT EXISTING PEDESTRIAN LIGHT ALONG PATH.
- 3 EXISTING LIGHT FIXTURE TO BE REMOVED AND RETURNED TO OWNER. REMOVE ALL ASSOCIATED CONDUIT AND WIRE TO ADJACENT FIXTURES EITHER SIDE.
- 4 PROVIDE NEW SURFACE MOUNTED JUNCTION BOX ON BOTTOM SIDE OF BRIDGE. RE: DETAIL 1/E202 FOR MORE INFORMATION.
- 5 PROVIDE (12) #8 AWG, (2) #6 AWG, AND (14) #12 GROUND IN 2" CONDUIT FROM NEW ELECTRICAL ENCLOSURE TO NEW JUNCTION BOX ON BRIDGE. ROUTE CONDUIT AS TIGHT AS POSSIBLE AND AS CONCEALED AS POSSIBLE AROUND BRIDGE STRUCTURAL ELEMENTS.
- 6 PROVIDE 2" CONDUIT FOR CONTROL CABLING. ROUTE CONDUIT AS TIGHT AS POSSIBLE AND AS CONCEALED AS POSSIBLE AROUND BRIDGE STRUCTURAL ELEMENTS.
- 7 NEW ELECTRICAL ENCLOSURE, RE: DETAIL 2/203.
- 8 BORE NEW CONDUIT UNDER EXISTING ROADWAY/ PEDESTRIAN PATH.

DATE	REVISIONS AND RECORD OF ISSUE	NO.	BY	CHK	APP

T & B Project No. 64-0350	File Name: MOD-T&B BORDER-SHEET - 22X34.DWG
DESIGNED BY: KV DRAWN BY: MH CHECKED BY: KV	DATE OF ORIGINAL ISSUE: 07/25/2025
THE PROFESSIONAL WHOSE SIGNATURE AND PERSONAL SEAL APPEARS ON THIS SHEET ASSUMES RESPONSIBILITY ONLY FOR WHAT APPEARS ON THIS PAGE, AND DISCLAIMS (PURSUANT TO SECTION 327.411 RDMO) ANY RESPONSIBILITY OF ALL OTHER PLANS, SPECIFICATIONS, ESTIMATES, REPORTS OR OTHER DOCUMENTS OR INSTRUMENTS NOT SEALED BY THE UNDERSIGNED PROFESSIONAL RELATING TO OR INTENDED TO BE USED FOR ANY PART OR PARTS OF THE PROJECT TO WHICH THIS PAGE REFERS.	

OLSSON - LANDSCAPE ARCHITECTURE
MO CERTIFICATE OF AUTHORITY #:2005000285
1814 Main St.
Kansas City, MO 64108

Project # 022-01892

LIGHTWORKS INC.
DESIGN+ENGINEERING

Taliaferro & Browne, Inc.
Civil / Structural Engineering,
Landscape Architecture & Surveying
1020 E. 8th STREET
KANSAS CITY, MISSOURI 64106
PH (816) 283-3456 FAX (816) 283-0810
PROFESSIONAL ENGINEERING CORPORATION
MISSOURI LICENSE NO. 000466 KANSAS LICENSE NO. E-1481
PROFESSIONAL LAND SURVEYING CORPORATION
MISSOURI LICENSE NO. 000094

MLK PARK PEDESTRIAN BRIDGE

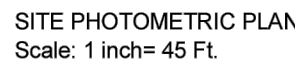
KANSAS CITY, MISSOURI

BRIDGE LIGHTING SECTION

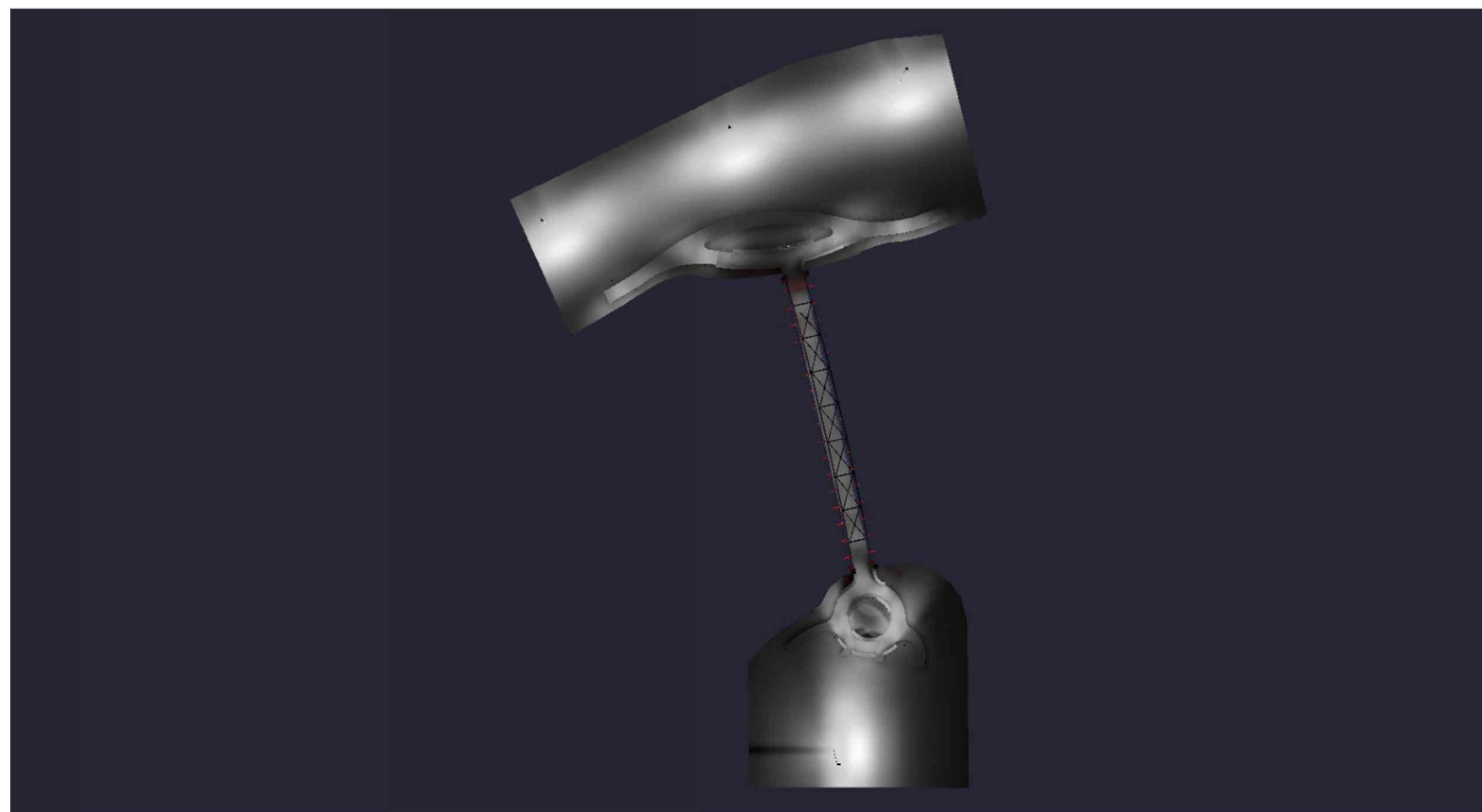
NOT FOR CONSTRUCTION

Kathi Vandel
Engineer
License No.:
E-2000147833

DWG NO.:
E102



JUNE 2025



Calculation Summary							
Scenario: All On							
Label	Calc Type	Units	Avg	Max	Min	Avg/Min	Max/Min
Bridge	illumiance	Fc	0.90	1.4	0.3	3.00	
Fin Surface	illumiance	Fc	1.64	2	0	N.A.	N.A.
Letter M_1	illumiance	Fc	11.10	13.9	6.9	1.61	2.01
Letter M_2	illumiance	Fc	8.93	11.1	6.3	1.42	1.76
Plaza Plaza	illumiance	Fc	1.03	2.6	0.1	10.30	26.00
Round Sidewalk_Sidewalk 1	illumiance	Fc	1.84	4.0	0.1	18.40	40.00
Sidewalk_Sidewalk 2	illumiance	Fc	1.07	3.4	0.0	N.A.	N.A.

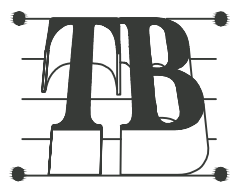
NOTES:

- 1) MATERIAL REFLECTANCE: 30
- 2) LIGHT LEVELS TAKEN AT GRADE.
- 3) TYPICAL LLF = .85 LLD

<u>T & B Project No.</u> 64-0350	<u>File Name:</u> MOD-T&B BORDER-SHEET - 22X34.DWG
DESIGNED BY: KV DRAWN BY: MH CHECKED BY: KV	<u>DATE OF ORIGINAL ISSUE:</u> 07/25/2025

THE PROFESSIONAL WHOSE SIGNATURE AND PERSONAL SEAL APPEARS ON THIS SHEET ASSUMES RESPONSIBILITY ONLY FOR WHAT APPEARS ON THIS PAGE, AND DISCLAIMS (PURSUANT TO SECTION 327.411 RDMO) ANY RESPONSIBILITY OF ALL OTHER PLANS, SPECIFICATIONS, ESTIMATES, REPORTS OR OTHER DOCUMENTS OR INSTRUMENTS NOT SEALED BY THE UNDERSIGNED PROFESSIONAL RELATING TO OR INTENDED TO BE USED FOR ANY PART OR PARTS OF THE PROJECT TO WHICH THIS PAGE REFERS.

OLSSON - LANDSCAPE ARCHITECTURE
MO CERTIFICATE OF AUTHORITY #:2005000285
1814 Main St.
Kansas City, MO 64108 Project # 022-01892



Taliaferro & Browne, Inc.
Civil / Structural Engineering,
Landscape Architecture & Surveying
1020 E. 8th STREET
KANSAS CITY, MISSOURI 64106
PH (816) 283-3456 FAX (816) 283-0810
PROFESSIONAL ENGINEERING CORPORATION
MISSOURI LICENSE NO. 000466 KANSAS LICENSE NO. E-148
PROFESSIONAL LAND SURVEYING CORPORATION
MISSOURI LICENSE NO. 000094

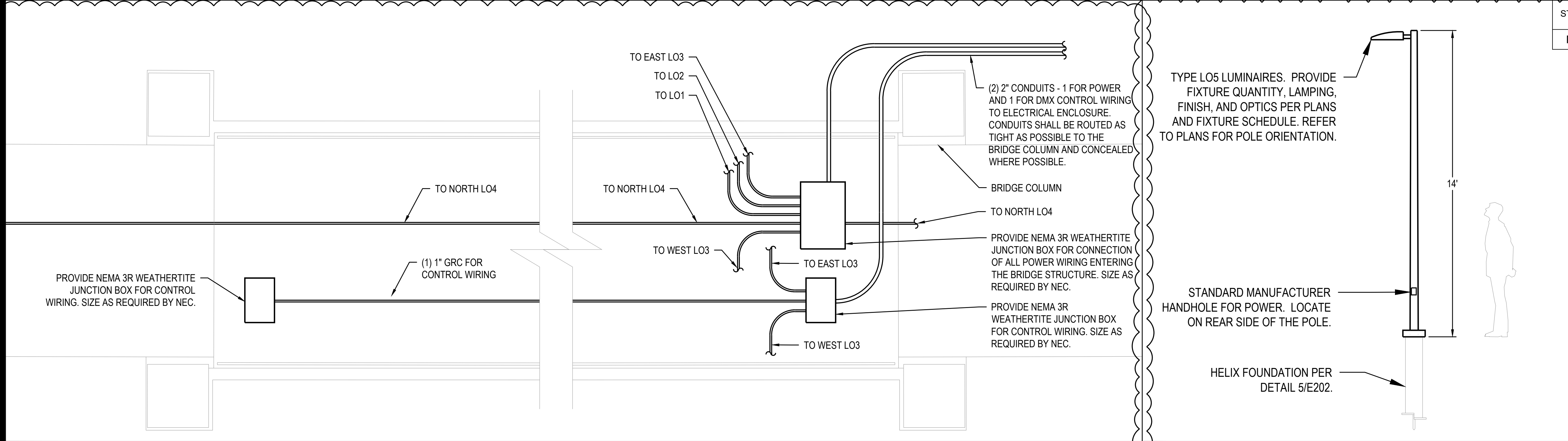
PHOTOMETRICS

NOT FOR
CONSTRUCTION

DWG NO.:
E103

G:\shortcut-targets-by-id\0B0bBoxP_fenHLVF520VQVU4T2M\LightWorks Server\Projects\2509 MLK Pedestrian Bridge Final Design\02 E Drawings\03 CAD\E3-XX-Details\MLK Pedestrian Bridge\02-02-2025 1:45pm

STATE	FEDERAL PROJECT NO. / CITY PROJECT NO.	SHEET NO.
MO	HPP-3303(419) / 70232201	E202



1 CONDUIT ROUTING DIAGRAM

SCALE: NTS

2 POLE ELEVATION DETAIL

SCALE: NTS

TYPE L05 LUMINAIRES. PROVIDE FIXTURE QUANTITY, LAMPING, FINISH, AND OPTICS PER PLANS AND FIXTURE SCHEDULE. REFER TO PLANS FOR POLE ORIENTATION.

STANDARD MANUFACTURER HANDHOLE FOR POWER. LOCATE ON REAR SIDE OF THE POLE.

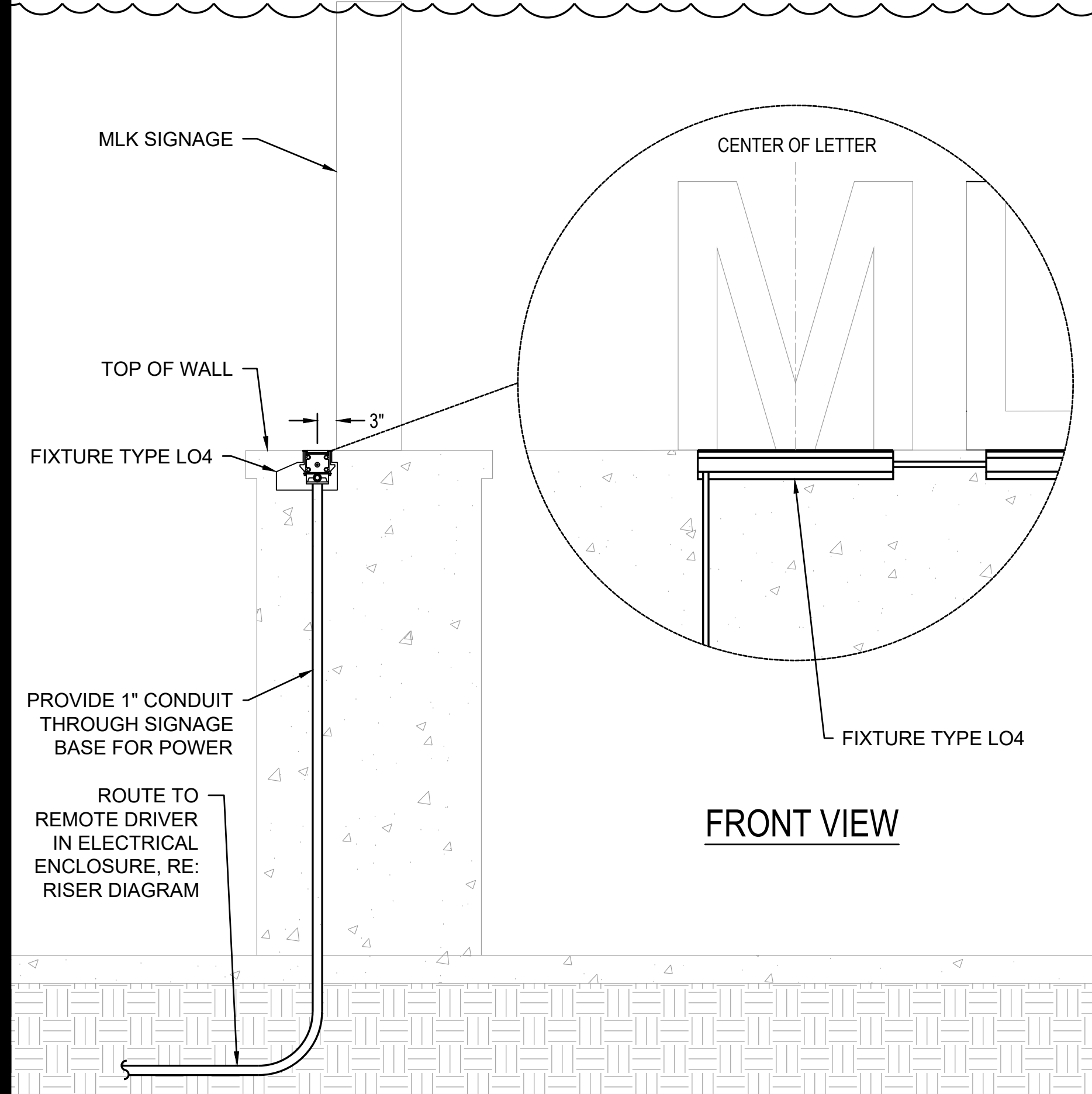
HELIX FOUNDATION PER DETAIL 5/E202.

-NOTES-

- FINISH: HOT DIP GALVANIZE PER ASTM-A153 (LATEST REVISION).
- BASEPLATE TO BE PERPENDICULAR TO SHAFT AXIS ($\pm 1^\circ$) AND HOLE CENTERLINE CONCENTRIC ($\pm .188$) TO SHAFT AXIS.
- STENCIL MIN. 1/2 IN. LETTERS MANUFACTURER'S NUMBER AFTER GALVANIZING.
- PILOT POINT AND SHAFT AXES TO BE CONCENTRIC ($\pm .125$ FIM) AND IN LINE ($\pm 2^\circ$).
- FLAME CUT TWO SLOTS IN SHAFT PERPENDICULAR TO THE BASEPLATE.
- PREHEAT, TUMBLEBLAST, HANDGRIND, AND CLEAN BASEPLATE, HELIX, AND PILOT POINT ON ALL WELDED AREAS.
- FLAMECUT IRREGULARITIES PERMISSIBLE: (1) VALLEYS NOT TO EXCEED 3/32 IN. BELOW NOMINAL SURFACE LEVEL, (2) PEAKS OR POSITIVE IRREGULARITIES NOT TO EXCEED 1/32 IN. ABOVE NOMINAL SURFACE LEVEL OR INTERSECTIONS OF NOMINAL SURFACES.
- MANUFACTURER TO HAVE IN EFFECT INDUSTRY RECOGNIZED WRITTEN QUALITY CONTROL FOR ALL MATERIALS AND MANUFACTURING PROCESSES.
- ALL MATERIAL IS TO BE NEW, UNUSED AND MILL TRACEABLE MEETING THE FOLLOWING SPECIFICATIONS:
 - BASEPLATE: ASTM A36-(LATEST REVISION) STRUCTURAL STEEL (CONFORM TO AASHTO TECH. BUL. #270)
 - SHAFT: ASTM A252-(LATEST REVISION) GRADE 2. STEEL PIPE PILES.
 - ALTERNATE MATERIAL: ASTM A53-(LATEST REVISION) TYPE E OR S. GRADE B, STEEL PIPE OR ASTM A500-(LATEST REVISION) GRADE B, STRUCTURAL STEEL TUBING.
 - HELIX: ASTM A635-(LATEST REVISION) 3/8" THICK HOT ROLLED STEEL PLATE OR COIL.
 - PILOT POINT: ASTM A575-(LATEST REVISION) 1-1/4" DIAMETER HOT ROLLED STEEL BAR.
 - BOLTS: CARRIAGE BOLT, 1-8UNC-24 PER ANSI B-18.5, SAE J429 GRADE-5.
 - ANTI-THEFT BOLTS: STAINLESS HEX HEAD MACHINE BOLTS, 1/4-20-UNC2A, PER ASTM A276.
 - NUTS: HEAVEY HEX NUTS PER ASTM A194 GRADE 2H OR ASTM A563 GRADE DH, MEETING THE SUPPLEMENTARY REQUIREMENTS OF ASTM A563;1-8UNC-2B PER ANSI B18.2.2.
 - ANTI-THEFT CLAMP ASSEMBLY: STEEL PER ASTM A36 STRUCTURAL STEEL.
 - RUBBER PADS: ELASTOMER PER CLASS 4 RUBBER BLANKET. MINIMUM OF 40 DUROMETER.
- BASEPLATE IS PERMANENTLY STAMPED WITH MANUFACTURER'S IDENTIFICATION "ABC" IN 1/2" LETTERS AND DATE CODE IN 1/4" LETTERS.
- BASEPLATE PERMANENTLY MARKED TO INDICATE CABLEWAY OPENING IN SHAFT.

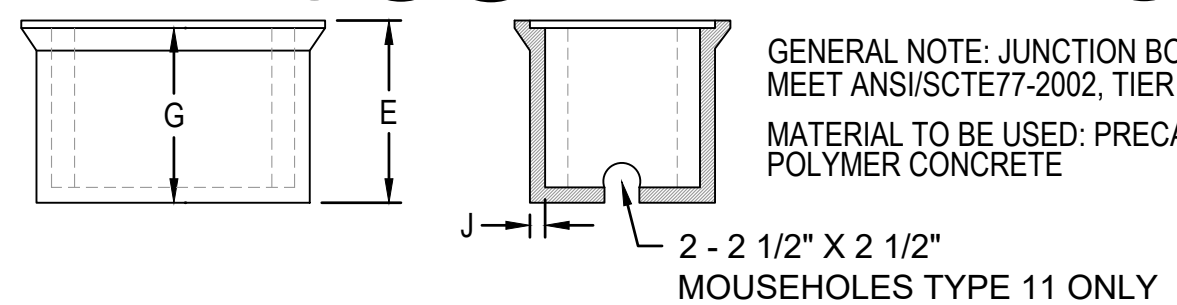
LIGHTING FOUNDATION
CAT. NO. C11242NG4VP-ATKC

CHANCE	HUBBELL® POWER SYSTEMS
CONFIDENTIAL: THIS DRAWING AND ITS CONTENTS ARE CONFIDENTIAL AND THE EXCLUSIVE PROPERTY OF HUBBELL. POWER SYSTEMS. NO REPRODUCTION, DISTRIBUTION OR COPIES MAY BE MADE WITHOUT THE WRITTEN CONSENT OF HUBBELL POWER SYSTEMS. HUBBELL POWER SYSTEMS UNPUBLISHED. ALL RIGHTS RESERVED UNDER THE COPYRIGHT LAWS.	TITLE LIGHTING FOUNDATION
SIZE SB	DWG NO. SA11242NG4VP-ATKC
DO NOT SCALE THIS DRAWING	DRN BY JWH DATE 4/13/12 SHEET 1/1



3 L04 MOUNTING DETAIL

SCALE: NTS



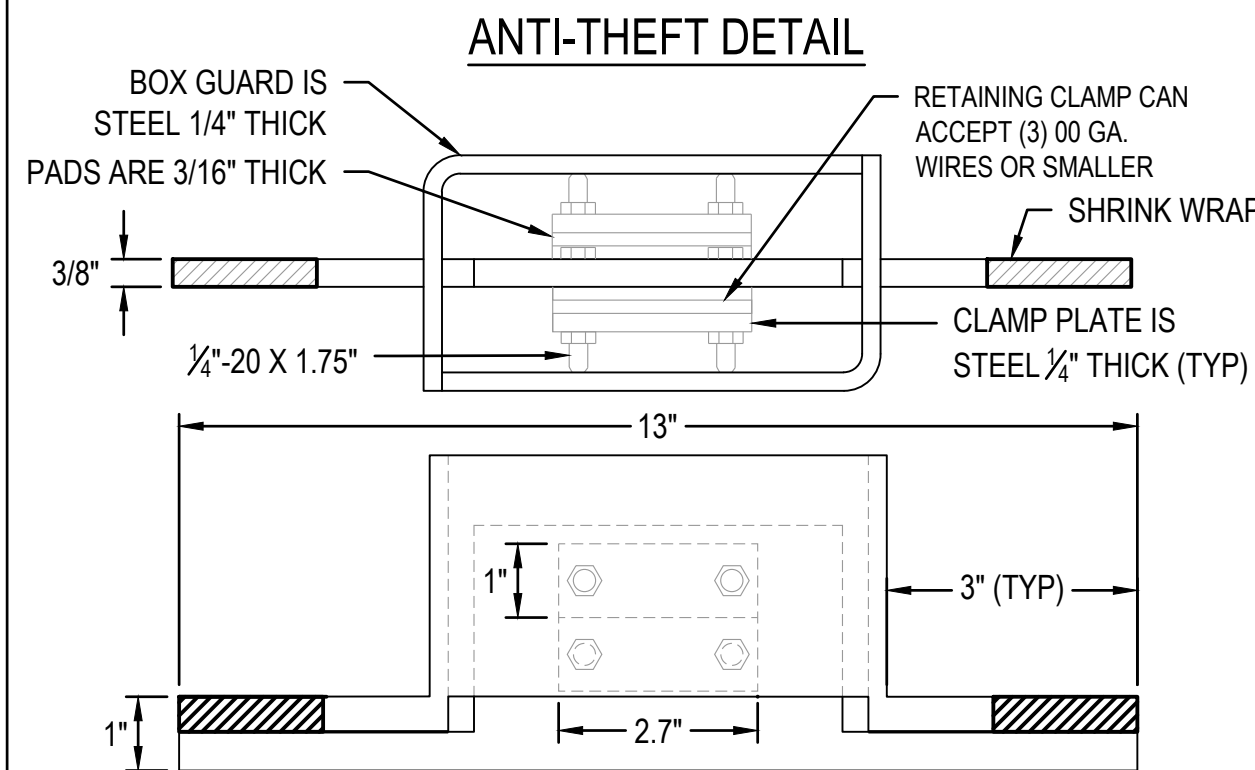
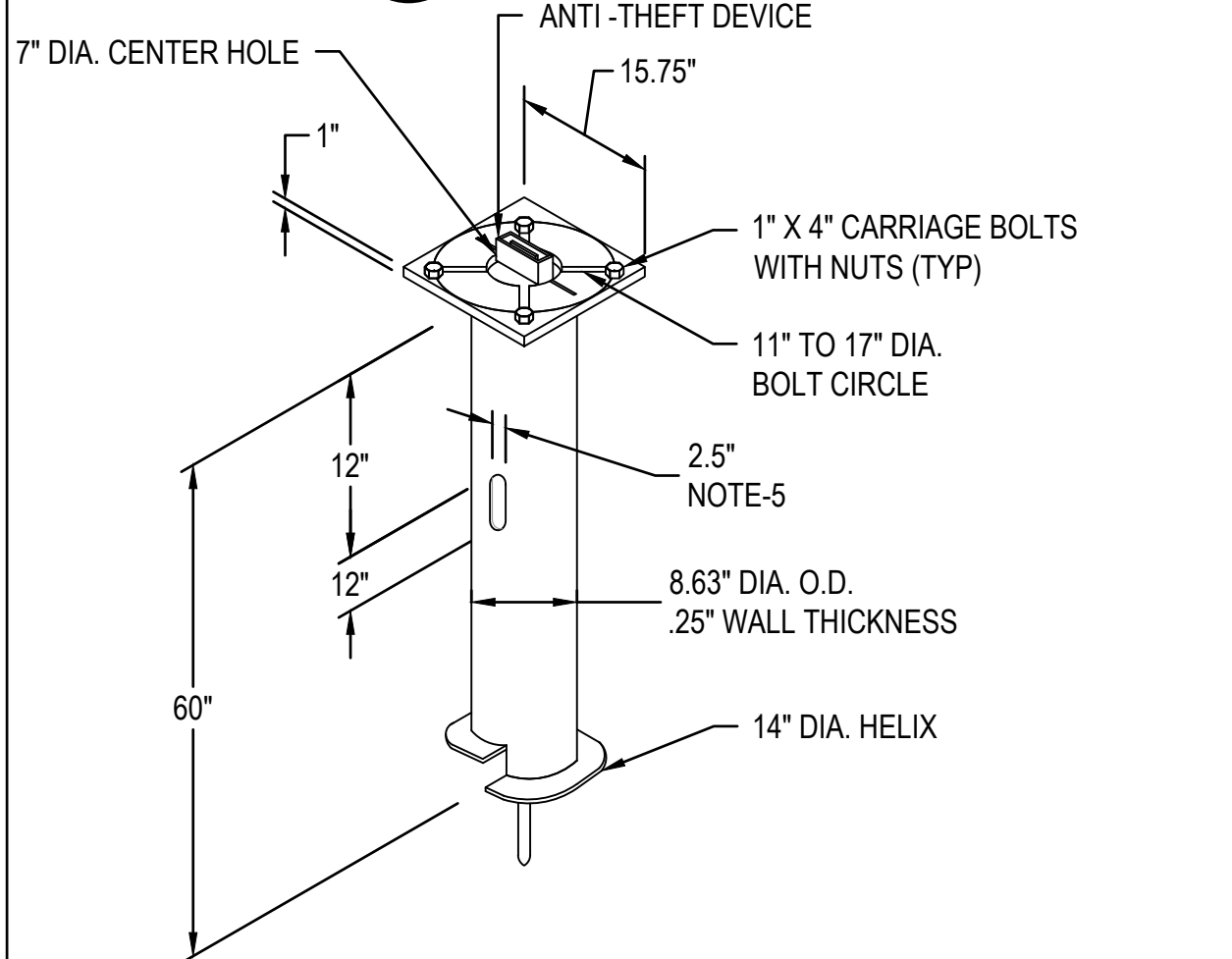
TYPE	DIMENSIONS (IN.)									
	A	B	C	D	E	F	G	H	J	K
II	18 1/2	11 1/2	3/4	20 1/2	13 1/2	12	10 1/4	17 1/4	3/8	11 1/4

PULL BOX

PULL AND JUNCTION BOXES: PULL AND JUNCTION BOXES SHALL BE SIZED IN ACCORDANCE WITH THE LATEST EDITION OF NEC AND SHALL BE INSTALLED SUCH THAT THEY ARE ACCESSIBLE. EXTERIOR PULL AND JUNCTION BOXES SHALL BE HEAVY DUTY, PRE-CAST POLYMER CONCRETE, AND SHALL MEET ANSI/SCTE77-2002, TIER 8 PERFORMANCE SPECIFICATION REQUIREMENTS. IN NO ASSEMBLY, CAN THE COVER DESIGN LOAD EXCEED THE DESIGN LOAD OF THE BOX. MINIMUM SIZE EXTERIOR PULL BOX SHALL BE 20.5"Lx13.5"Wx13.5"D. COVERS FOR EXTERIOR PULL BOXES SHALL HAVE TEXT STATING 'KCMO STREET LIGHTING' AND SHOW THE TIER DESIGNATION OF THE BOX. IN JOINT USE BOXES, CABLES SHALL BE CLEARLY IDENTIFIED AS STREET LIGHT CABLES WITH PLASTIC OR METAL TAGS. ADDITIONAL PULL BOXES MAY BE INSTALLED WHEN APPROVED BY THE ENGINEER.

4 IN-GRADE PULLBOX DETAIL

SCALE: NTS



5 8x60 HELIX BASE DETAIL

SCALE: NTS

T & B Project No.
64-0350

File Name:
MOD-T&B BORDER-SHEET - 22X34.DWG

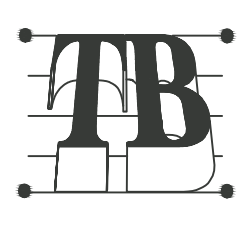
DESIGNED BY: KV
DRAWN BY: MH
CHECKED BY: KV

DATE OF ORIGINAL ISSUE:
07/25/2025

THE PROFESSIONAL WHOSE SIGNATURE AND PERSONAL SEAL APPEARS ON THIS SHEET ASSUMES RESPONSIBILITY ONLY FOR WHAT APPEARS ON THIS PAGE, AND DISCLAIMS (PURSUANT TO SECTION 327.411 RDMQ) ANY RESPONSIBILITY OF ALL OTHER PLANS, SPECIFICATIONS, ESTIMATES, REPORTS OR OTHER DOCUMENTS OR INSTRUMENTS NOT SEALED BY THE UNDERSIGNED PROFESSIONAL RELATING TO OR INTENDED TO BE USED FOR ANY PART OR PARTS OF THE PROJECT TO WHICH THIS PAGE REFERS.

olsson

OLSSON - LANDSCAPE ARCHITECTURE
MO CERTIFICATE OF AUTHORITY #2005000285
1814 Main St.
Kansas City, MO 64108
Project # 022-01892



Taliaferro & Browne, Inc.
Civil / Structural Engineering,
Landscape Architecture & Surveying
1020 E. 8th STREET
KANSAS CITY, MISSOURI 64106
PH (816) 283-3456 FAX (816) 283-0810
PROFESSIONAL ENGINEERING CORPORATION
MISSOURI LICENSE NO. 00066 KANSAS LICENSE NO. E-1481
PROFESSIONAL LAND SURVEYING CORPORATION
MISSOURI LICENSE NO. 000094

MLK PARK PEDESTRIAN BRIDGE
KANSAS CITY, MISSOURI

LIGHTING DETAIL SHEET

NOT FOR
CONSTRUCTION

Kathi Vandel
Engineer
License No.:
E-2000147833

DWG NO.:
E202

