

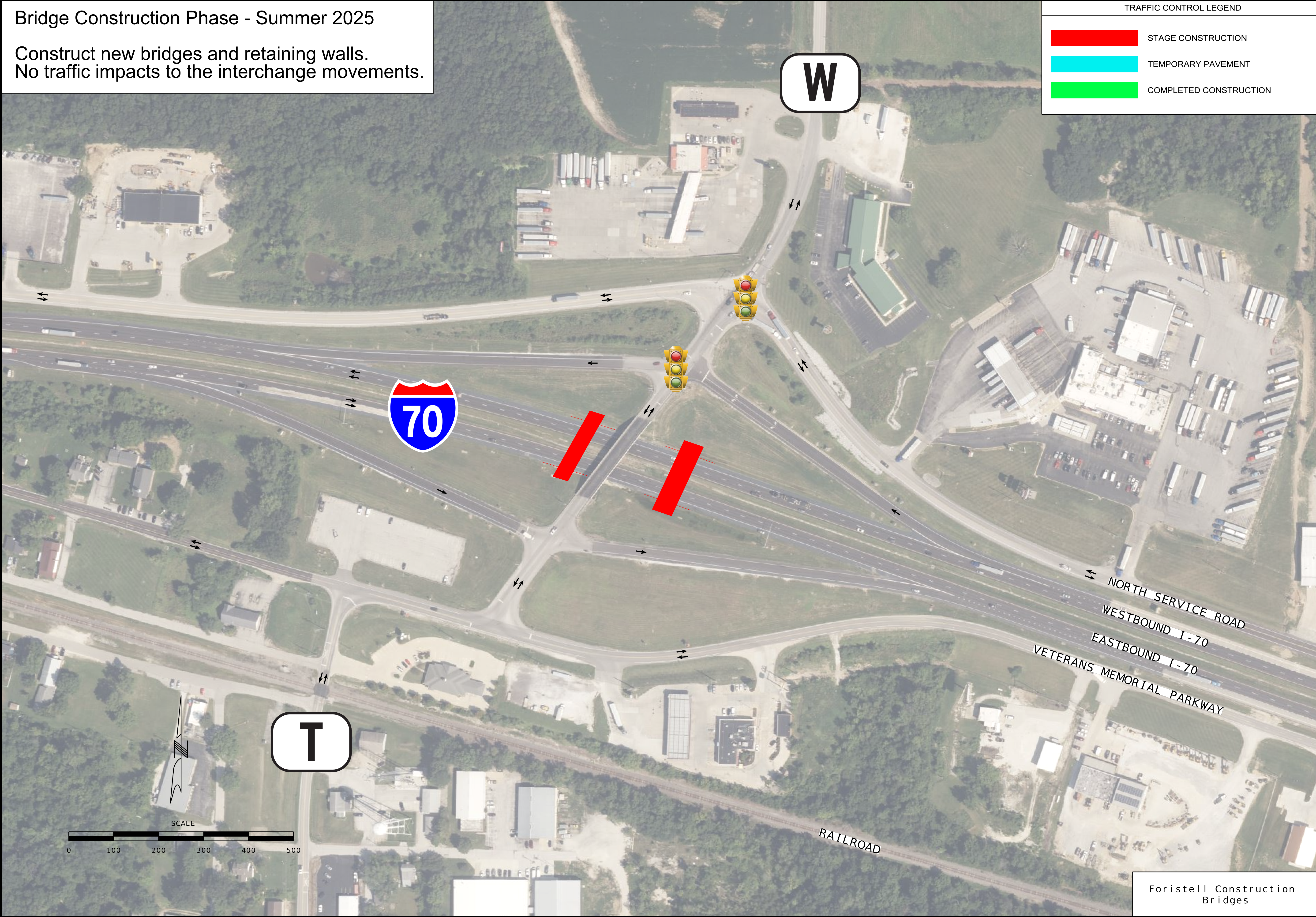
Bridge Construction Phase - Summer 2025

Construct new bridges and retaining walls.
No traffic impacts to the interchange movements.

TRAFFIC CONTROL LEGEND	
<div></div>	STAGE CONSTRUCTION
<div></div>	TEMPORARY PAVEMENT
<div></div>	COMPLETED CONSTRUCTION

"THIS MEDIA SHOULD NOT BE CONSIDERED A CERTIFIED DOCUMENT."

DATE PREPARED 9/1/2025	
ROUTE I - 70	STATE MO
DISTRICT SL	SHEET NO. C01-000
COUNTY St. Charles	
JOB NO. JST0020	
CONTRACT ID.	
PROJECT NO.	



MISSOURI HIGHWAYS AND TRANSPORTATION COMMISSION

MoDOT

105 WEST CAPITOL
JEFFERSON CITY, MO 65102
1-888-ASK-MODOT (1-888-275-6636)

IMPROVE 70
ALLIANCE

HNTB 211 N. BROADWAY STE. 2915
ST. LOUIS, MO 63102
CERTIFICATE OF AUTHORITY
NO. 001270

Bartlett & West
601 MONROE ST. SUITE 201 - JEFFERSON CITY, MO 65101
PHONE 572-630-3181
CERTIFICATE OF AUTHORITY - ENGINEERING
WWW.BARTLETTWEST.COM

Foristell Construction
Bridges