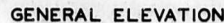


FED. ROAD DIST. NO.	STATE	FED. AID PROJ. NO.	FISCAL YEAR	SHEET NO.	TOTAL SHEETS
5	MO.	3N-51	19		



Note: See Special Provisions in regard to ordering Piles. All piling to be creosoted timber and ordered in the following lengths: 3 @ 25'-0" and 4 @ 15'-0". These lengths include 12" cut-offs. Wing wall piles to be driven to full penetration. All other piles to be driven to full penetration unless bearing of 15 ton is obtained at a lesser depth, in which case tips shall be driven to Elev. 335.0.



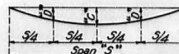
PART ELEVATION AT INT. BENT



PART PLAN AT INT. BENT SHOWING REINFORCING

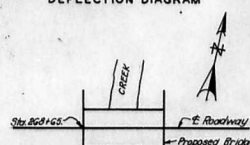
HANDRAIL SPACING					
SPAN "S"	NO. PANELS	"A" DIMENSIONS"			
		SINGLE SPAN	1/2 END SPAN	INT. SPAN	LAST END SPAN
15'0"	3	5'-5 1/2" abt	5'-0" abt	5'-0"	5'-4 1/2" abt
17'0"	3	6'-1 1/2" abt	5'-5 1/2" abt	5'-0"	6'-0" abt
19'0"	3	6'-9 1/2" abt	6'-4" abt	6'-4"	6'-9 1/2" abt
21'0"	4	5'-7 1/2"	5'-3"	5'-3"	5'-6 1/2"
23'0"	4	6'-1 1/2"	5'-9 1/2"	5'-9"	6'-0 1/2"
25'0"	4	6'-7 1/2"	6'-3"	6'-3"	6'-6 1/2"
27'0"	5	6'-1 1/2" abt	5'-9 1/2" abt	5'-9 1/2" abt	6'-3 1/2" abt
29'0"	5	6'-0" abt	5'-6"	5'-9 1/2" abt	6'-3 1/2" abt
31'0"	5	6'-3 1/2" abt	6'-2 1/2" abt	6'-2 1/2" abt	6'-5 1/2" abt
33'0"	6	5'-8 1/2" abt	5'-6 1/2" abt	5'-6"	5'-8 1/2" abt
35'0"	6	6'-0 1/2" abt	5'-10" abt	5'-10"	6'-0 1/2" abt
37'0"	6	6'-4 1/2" abt	6'-2 1/2" abt	6'-2"	6'-4 1/2" abt
39'0"	7	5'-9 1/2" abt	5'-7 1/2" abt	5'-6 1/2" abt	5'-8 1/2" abt
41'0"	7	6'-0" abt	5'-6"	5'-6"	6'-0" abt
43'0"	8	5'-9 1/2" abt	6'-1 1/2" abt	6'-1 1/2" abt	6'-3 1/2" abt
45'0"	8	5'-9 1/2" abt	5'-7 1/2"	5'-7 1/2"	6'-3 1/2" abt
47'0"	8	6'-0 1/2" abt	5'-10 1/2"	5'-10 1/2"	6'-0 1/2" abt
49'0"	8	6'-3 1/2" abt	6'-1 1/2"	6'-1 1/2"	6'-3 1/2" abt

DEFLECTION		
SPANS	"C"	"D"
15'-0"	1/8"	1/4"
17'-0"	1/8"	3/8"
19'-0"	1/8"	1/2"
21'-0"	1/8"	5/8"
23'-0"	3/8"	1"
25'-0"	3/8"	1 1/8"
27'-0"	3/8"	1 1/4"
29'-0"	1/2"	1 1/2"
31'-0"	1/2"	1 3/4"
33'-0"	1/2"	1 7/8"
35'-0"	1/2"	2"
37'-0"	1/2"	2 1/8"
39'-0"	1/2"	2 1/4"
41'-0"	1/2"	2 1/2"
43'-0"	1/2"	2 3/4"
45'-0"	1/2"	2 7/8"
47'-0"	1/2"	3"
49'-0"	1/2"	3 1/8"



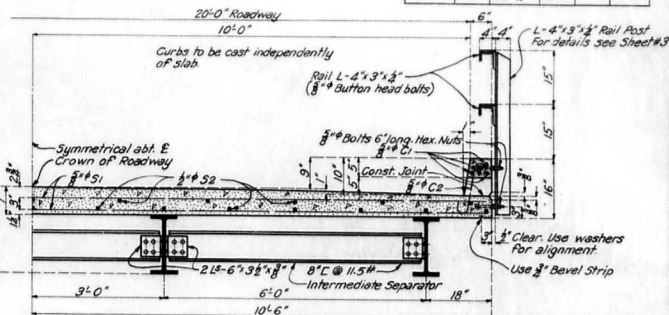
Note: Floor Slab to be brought to grade and dead load deflection taken care of by increasing slab thickness. Depth of slab at outside face of curb to be kept uniform and bottom surface of slab warped between curb and outside beam to obtain required thickness at beam. Payment will be allowed for additional concrete required for thickening slab. This additional concrete is included in "Estimated Quantities."

DEFLECTION DIAGRAM



LOCATION SKETCH

DIMENSION "B"	
SPAN "S"	"B"
15'-0"	20'-8"
17'-0"	21'-"
19'-0"	22'-8"
21'-0"	23'-"
23'-0"	23'-8"
25'-0"	24'-1"
27'-0"	24'-11"
29'-0"	24'-3"
31'-0"	24'-"
33'-0"	24'-8"
35'-0"	24'-4"
37'-0"	24'-6"
39'-0"	24'-7"
41'-0"	24'-7 1/2"
43'-0"	24'-7 1/2"
45'-0"	24'-10"
47'-0"	24'-10 1/2"
49'-0"	24'-10 1/2"



Note: Top of channel separators at ends of each I-Beam Span to be flush with bottom of floor slab as shown in section thru end bent at F.

Note: Depth of outside stringers will in some cases be a fraction of an inch less than that of inside stringers and in order to keep bottom of slab horizontal it will be necessary to haunch slab down to top of outside stringers.

HALF SECTION THRU SPAN

TABLE OF STRINGERS						
SPAN -ft	PER PLANS		PERMISSIBLE SUBSTITUTIONS			
	CARBIDE BEAMS		STANDARD P-BEAMS		BETHELEHEM BEAM	
	INSIDE	OUTSIDE	INSIDE	OUTSIDE	INSIDE	OUTSIDE
15'-0"	14'-30"	14'-30"	15'-0-10"	15'-2-37"	15'-0-10"	15'-2-37"
17'-0"	14'-33"	14'-33"	15'-42-50"	15'-42-50"	14'-33"	14'-33"
19'-0"	16'-37"	16'-37"	15'-42-50"	15'-42-50"	16'-37"	16'-37"
21'-0"	16'-40"	16'-37"	15'-45-15"	15'-45-15"	16'-40"	16'-37"
23'-0"	16'-45"	16'-40"	15'-54-78"	15'-54-78"	16'-45"	16'-40"
25'-0"	18'-47"	18'-40"	15'-54-78"	15'-54-78"	18'-47"	18'-40"
27'-0"	18'-52"	18'-55"	18'-60"	18'-54-78"	18'-52"	18'-47"
29'-0"	20'-58"	20'-58"	20'-70"	20'-54-78"	20'-58"	20'-55"
31'-0"	21'-58"	21'-58"	20'-70"	20'-54-78"	21'-58"	21'-55"
33'-0"	21'-62"	21'-58"	20'-78-50"	20'-70"	22'-62"	22'-58"
35'-0"	21'-66"	21'-62"	20'-81-64"	20'-75"	22'-67-64"	22'-62"
37'-0"	24'-70"	24'-70"	23'-73-94"	23'-78-94"	24'-70"	24'-70"
39'-0"	24'-74"	24'-70"	24'-73-94"	24'-78-94"	24'-74"	24'-70"
41'-0"	24'-81"	24'-74"	24'-83-5"	24'-78-94"	24'-81"	24'-78"
43'-0"	24'-85"	24-81-71"	24'-120"	24'-80"	26'-85"	26'-81"
45'-0"	27'-91"	27'-85"	27'-103"	27'-85"	28'-91"	28'-85"
47'-0"	27'-91"	27'-85"	27'-103"	27'-85"	28'-91"	28'-85"
49'-0"	27'-91"	27'-85"	24'-125"	24'-103-50"	28'-91"	28'-85"

GENERAL NOTES:

Loading: 1 one 10 ton Truck, 80% of weight on rear axle, 30% impact, 14'-0" wheel base, 6'-0" gauge, 10" tire.
 All concrete to be 1:2:3 3/4" mix.
 Exposed edges to be 2'-8" ¹/₂ where no other level is noted.
 All timbers to be creosoted or of the best Coast Redwood, close-grained Structural Grade; creosoted Southern Yellow Pine, Dense Structural Square Edge and Sound Grade or untreated California Redwood, Prime Structural Grade. All timber rough full-sawn except as noted.
 All timbers to be fitted and braced in sawing to fit in accordance with grading rules. All treated timber to be creosoted, planed and bored as shown before treating. Backing plans all be billed 6' long and are to be fitted and cut in the field.
 All timbers for driving piles to be field bored 8" ¹/₂. Unless otherwise noted all other field holes in timber shall be field bored 8" ¹/₂. When bolts with countersunk heads are indicated on plans cut washers shall be used under heads. 0.6 washers shall be used under nuts, nuts and washers under ends of all bolts.
 Number of bolts, drift pins, nails and other fasteners shall be at allowance made for excess. Cost of substructure hardware to be included in price bid for timber in place.
 F-Bands with Fastenings, Spacers, handrail, handrail posts with Fastenings, clip angles and other hardware used with handrail with Fastenings, will be paid for as structural steel. Cost of mastic edge mauling will be included in unit bid price for concrete.
 Rivets, bolts, Machine bolts, handrail where mastic shall be 3" ¹/₂ holes 1" ¹/₂. Machine bolts, handrail where mastic shall be 3" ¹/₂

ESTIMATED QUANTITIES				
	ITEM	SUPERSTR.	SUBSTR.	TOTAL
19	Bridge Excavation Class 1	Cu Yds	40	40
	Bridge Excavation Class 2	Cu Yds	—	—
19	Concrete 1:2:4 mix "A"	Cu Yds	—	—
	Concrete 1:2:3½ mix "A"	Cu Yds	20.9	20.9
	Fabricated Structural Steel	Lbs	16400	16400
	Reinforcing Steel	Lbs	5350	5350
	Crossed Timber Piles	Lin Ft.	248	248
	Crossed Timber Pile Cutoffs	Lin. Ft.	12	12
	Timber (See Special Provisions)	F.B.M.	159.2	159.2

Note: Bridge excavation will be allowed for end bents within horizontal limits shown and noted on "Half Plan of End Bent" sheet # 2. This excavation will be computed from existing ground line to bottom end of 6"x6" backing supports.

B.M. Elev. 864.74 N.I.P. 20" Walnut 200' Pt. Sta. 266+00

BRIDGE OVER SMALL CREEK

© 2006 The Authors
Journal compilation © 2006 Blackwell Publishing Ltd

STATE ROAD FROM DRUM TO DELT

ABOUT 2.8 MILES WEST OF DELTA

CARE GIRARDEAU COUNTY

SAFE GIRARDEAU COUNTY

SUBMITTED BY W. J. Jones DATE 7/2/32

APPROVED BY *J. H. Miller* DATE

CHIEF ENGINEER

Sheet No. 1 of 3

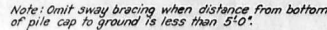
FINISHE

FINISHED

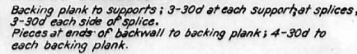
S-532

Designed Nov. 1929 By F.W.H.
 Drawn Mar. 1930 By R.J.G.
 Traced Dec. 1931 By R.J.G. Assembled June 1932 By H.E.C.
 Checked Dec. 1931 By J.T.M. Checked July 1932 By R.J.G.

FED. ROAD DIST. NO.	STATE	FED. AID PROJ. NO.	FISCAL YEAR	SHEET NO.	TOTAL SHEETS
5	MO	34-51	19		



*Note: Any irregularity in alignment of piling in end bents to be corrected by facing one surface of the 6"x6" backing support or by varying the thickness of the backing support such as to place the surface of the backing in a true plane and eliminate any strain on the backing plank.
Splice in backing plank to be made at center of 6"x6" backing support and to be alternated on the two intermediate supports.*



Note: Cast iron clamps used on bearing plates to have $\frac{1}{8}$ " clearance at flange of beam to allow for expansion. All clamps to have $\frac{3}{8}$ " ϕ cored holes. Use two clamps only on each I Beam at pile caps on end bents.

Note: Reinforcing bars in each span to be billed and tagged separately.

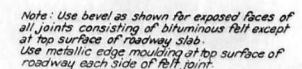
Note: Pile caps to be classified as beams and stringer.
All other timber to be classified as joist and plank.

**** S25 to exact depth of 113**

§ Omit when "E" is less than 5%

Note: Bolts to be threaded 8" and sawed off $\frac{1}{2}$ " outside of nut after nut has been tightened.

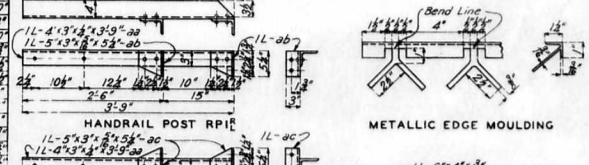
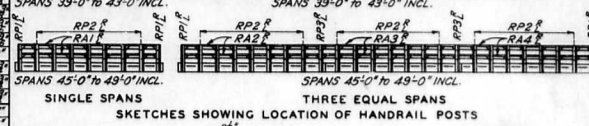
* 2 Washers plus washers for fill required for alignment of railposts.



DETAILS OF BEVEL FOR BIT. FELT JOINTS

C 52

FED. ROAD DIST. NO.	STATE	FED. AID PROJ. NO.	FISCAL YEAR	SHEET NO.	TOTAL SHEET
5	MO.	SN-SI	19		




24' 10 1/2" 12 1/2' 1 1/2" 10' 1 1/2" 12' 1 1/2" 13' 1/2-6 x 4 x 8


Technical drawing of a bridge railing section. The drawing includes the following elements:


- Dimensions:**
 - Top horizontal dimensions: 2'-6", 3'-9", 15'-0"
 - Bottom horizontal dimensions: 2'-6", 5'-9", 15'-0"
 - Vertical dimensions: 6'-0" (total height), 1'-0" (clip height), 1'-0" (post height), 1'-0" (clip height), 1'-0" (post height)
 - Angles: 24°, 104°, 124°, 128°, 10°, 104°
- Components:**
 - HANDRAIL POST RP2^R
 - HANDRAIL POST RP3^R
 - STRINGER CLIP ANGLE
- Notes:**
 - 1L-5"x3"x8"x12'-ad
 - 1L-4"x3"x8"x13'-9'-ad
 - 24"x11/2" slotted holes at exp. joints only.
 - Holes to be drilled in field. "W" is equal to width of flange of stringer.

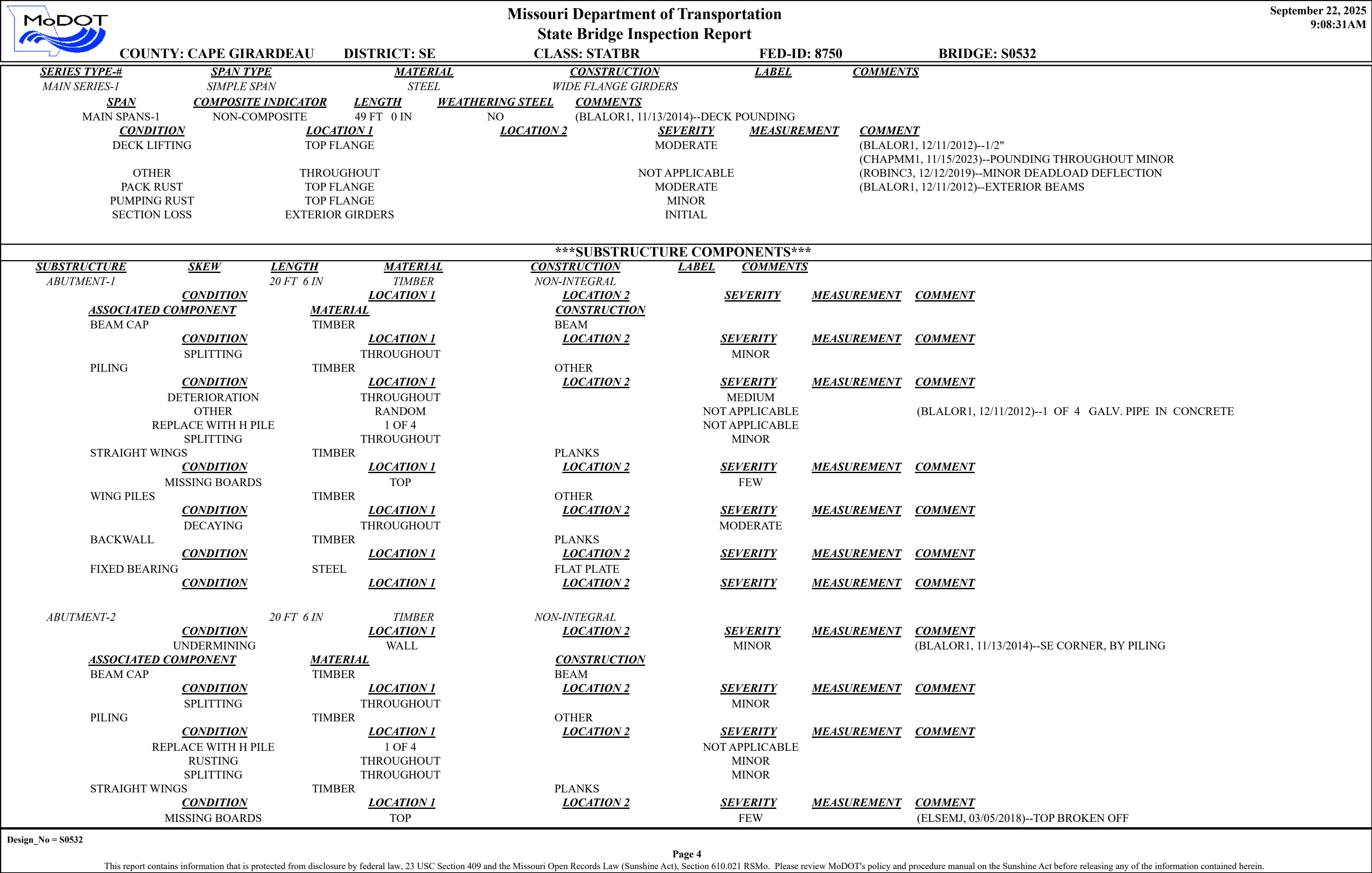
CAPE GIRARDEAU COUNTY FINISHED


S-532


		<div>Missouri Department of Transportation</div> <div>State Bridge Inspection Report</div>				<div>September 22, 2025</div> <div>9:08:31AM</div>							
COUNTY: CAPE GIRARDEAU		DISTRICT: SE		CLASS: STATBR		FED-ID: 8750		BRIDGE: S0532					
GENERAL STRUCTURE INFORMATION							***BRIDGE INSPECTION INFORMATION***						
<div>ROUTE: RTNE</div> <div>FEATURE: SMALL CR</div> <div>STATUS: P-POSTLOAD</div> <div>LOG MILE: 14.031</div> <div>DETOUR: 22.00 MILES</div> <div>NHS: NO</div> <div>BUILT: 1932</div> <div>REHAB:</div> <div>LOCATION: S 1 T 29 R 11 E</div> <div>LATITUDE: 37 12 27.45 (DMS)</div> <div>LONGITUDE: 89 46 53.49 (DMS)</div>		<div># SPANS: 1</div> <div>LANES ON: 1</div> <div>LANES UNDER: 0</div> <div>COMPASS DIRECTION: WEST to EAST</div> <div>DIRECTION OF TRAFFIC: 1-LN/2-WAY</div> <div>FUNCTIONAL CLASS: RL-MAJOR COLLECTOR</div> <div>NBI OWNER: MODOT</div> <div>NBI MAINTAINED: MODOT</div> <div>MAINTENANCE DISTRICT: SE</div> <div>MAINTENANCE COUNTY: CAPE GIRARDEAU</div> <div>SUB AREA: 7H01</div>		<div>PLACE CODE: 78280 WELCH</div> <div>LENGTH: 49 FT 0 IN</div> <div>MAXIMUM SPAN: 49 FT 0 IN</div> <div>APPROACH ROADWAY: 20 FT 0 IN</div> <div>CURB TO CURB: 20 FT 0 IN</div> <div>OUT TO OUT: 21 FT 0 IN</div> <div>AADT: 1350</div> <div>AADT YEAR: 2024</div> <div>AADT TRUCK: 4.3%</div> <div>FUTURE AADT: 2093</div> <div>FUTURE AADT YEAR: 2044</div>		<div>DATE: 11/04/2024</div> <div>RESPONSIBILITY: DISTRICT</div> <div>FREQUENCY: 12</div> <div>CALCULATED INTERVAL**: 12</div> <div>TEAM LEADER: STEVE RIGHTNOWAR</div> <div>ELEMENT: NO</div> <div>INSPECTOR 2:</div> <div>INSPECTOR 4:</div> <div>INSPECTOR 3:</div> <div>** When calculated interval exceeds the frequency, a justification comment per BIRM is required.</div>							
						<div>GENERAL INSPECTION COMMENTS</div>							
FRACTURE CRITICAL INSPECTION INFORMATION					***INDEPTH INSPECTION INFORMATION***								
<div>DATE:</div> <div>FREQUENCY:</div> <div>TEAM LEADER:</div> <div>INSPECTOR 2:</div> <div>** When calculated interval exceeds the frequency, a justification comment per BIRM is required.</div>					<div>RESPONSIBILITY:</div> <div>CALCULATED INTERVAL**:</div> <div>INSPECTOR 3:</div> <div>INSPECTOR 4:</div> <div>CATEGORY:</div> <div>NBI:</div> <div>METHOD:</div> <div>** When calculated interval exceeds the frequency, a justification comment per BIRM is required.</div>								
<div>FRACTURE CRITICAL INSPECTION COMMENTS</div>					<div>INDEPTH INSPECTION COMMENTS</div>								
SPECIAL INSPECTION INFORMATION					***UNDERWATER INSPECTION INFORMATION***								
<div>DATE: 08/05/2024</div> <div>FREQUENCY: 120</div> <div>TEAM LEADER: JERROD JERNIGAN</div> <div>INSPECTOR 2:</div> <div>** When calculated interval exceeds the frequency, a justification comment per BIRM is required.</div>					<div>RESPONSIBILITY: DISTRICT</div> <div>CALCULATED INTERVAL**: 123</div> <div>INSPECTOR 3:</div> <div>INSPECTOR 4:</div> <div>CATEGORY: CHANNEL CROSS SEC</div> <div>NBI: NO</div> <div>METHOD: WT TAPE</div>								
<div>SPECIAL INSPECTION COMMENTS</div>					<div>UNDERWATER INSPECTION COMMENTS</div>								
OTHER SPECIAL INSPECTIONS					OTHER UNDERWATER INSPECTIONS								
<div>DATE</div> <div>02/28/2018</div>	<div>FREQUENCY</div> <div>999</div>	<div>CATEGORY</div> <div>QUALITY ASSURANCE</div>	<div>NBI</div> <div>NO</div>	<div>CALCULATED INTERVAL</div> <div></div>	<div>RESPONSIBILITY</div> <div>BRIDGEDIV</div>	<div>METHOD</div> <div></div>	<div>DATE</div> <div></div>	<div>FREQUENCY</div> <div></div>	<div>CATEGORY</div> <div></div>	<div>NBI</div> <div></div>	<div>CALCULATED INTERVAL</div> <div></div>	<div>RESPONSIBILITY</div> <div></div>	<div>METHOD</div> <div></div>
<div>05/16/2017</div>	<div>999</div>	<div>DAMAGE POST INCIDENT</div>	<div>NO</div>		<div>DISTRICT</div>								
<div>Design_No = S0532</div>													
<div>Page 1</div> <div>This report contains information that is protected from disclosure by federal law, 23 USC Section 409 and the Missouri Open Records Law (Sunshine Act), Section 610.021 RSMo. Please review MoDOT's policy and procedure manual on the Sunshine Act before releasing any of the information contained herein.</div>													

		Missouri Department of Transportation			September 22, 2025	
		State Bridge Inspection Report			9:08:31AM	
COUNTY: CAPE GIRARDEAU		DISTRICT: SE	CLASS: STATBR	FED-ID: 8750	BRIDGE: S0532	
STRUCTURE POSTING						
APPROVED CATEGORY: S-5 CENTERLINE OF BRIDGE AND TRUCKS OVER 15 TONS 15 MPH ON BRIDGE.						
Ton 1: 15 Ton 2: Ton 3:						
COMMENTS: (CROCKC1, 11/29/2018)--MISSING EB POSTING						
FIELD CATEGORY: S-5 CENTERLINE OF BRIDGE AND TRUCKS OVER 15 TONS 15 MPH ON BRIDGE.						
Ton 1: 15 Ton 2: Ton 3: PROBLEM: PROBLEM DIRECTION:						
COMMENTS: (ROBINC3, 11/15/2019)--WEST SIDE SIGN IS MISSING						
GENERAL COMMENTS/MAJOR RATED ITEMS						
GENERAL COMMENTS: (BOWDEJ1, 09/10/2008)--(49") SMP WF GDR SPAN						
[ITEM 58] DECK: 6-SATISFACTORY CONDITION			COMMENTS: (BLALOR1, 11/19/2013)--TRANS CRACKS, DELAMN			
RATING : 11/13/2014			(BLALOR1, 11/13/2014)--DECK POUNDING			
			(ELSEMJ, 03/05/2018)--DECK ROTATING ON BEAMS APROX 4 INCHES			
[ITEM 59] SUPER: 6-SATISFACTORY CONDITION			COMMENTS: (BLALOR1, 11/14/2012)--RUSTING TOP FLANGE-DECK LIFTING			
RATING : 11/14/2012						
[ITEM 60] SUB: 5-FAIR CONDITION			COMMENTS: (BLALOR1, 11/14/2012)--TIMBER PILES SPLICE			
RATING : 05/18/2001						
[ITEM 61] BANK/CHANNEL: 6-WIDESPREAD MINOR DAMAGE			COMMENTS: (ELSEMJ, 03/05/2018)--USING THE FIELD VERIFICATION MODEL (FVM) - AS A THIRD PARTY INSPECTOR, I TOOK THE PREVIOUS INSP REPORT INTO THE			
RATING : 03/05/2018			FIELD AND VERIFIED THOROUGHNESS OF REPORT WITH ASSIGNED CONDITION AND APPRAISAL RATINGS			
[ITEM 113] SCOUR: 8-STABLE FOR CALCULATED			COMMENTS:			
RATING : 05/18/2001						
EVALUATION TYPE :						
[ITEM 71] WATERWAY ADEQUACY: DECK/APPRCH OVERTOP SLIGT			COMMENTS:			
RATING : 05/18/2001						
[ITEM 72] APPRRDWY ALIGNMENT: 6-SATISFACTORY			COMMENTS:			
RATING : 05/18/2001						
RAILING AND APPROACH PAVEMENT COMPONENTS AND RATINGS						
[ITEM 36A] BRIDGE RAILING RATING: DOESNT MEET CURRNT STND-0						
RATING : 02/17/2004						
COMMENTS:						
<u>MATERIAL</u>		<u>CONSTRUCTION</u>		<u>DIRECTION</u>		<u>COMMENTS</u>
REINFORCED CONCRETE		CURB		BOTH		
<u>CONDITION</u>		<u>LOCATION 1</u>		<u>LOCATION 2</u>		<u>SEVERITY</u>
SPALLS		RANDOM				MODERATE
VERTICAL CRACKS		RANDOM				MINOR
STEEL		ANGLE-DOUBLE		BOTH		
[ITEM 36B] TRANSITION RAILING RATING: NOT PROVIDED-0						
RATING : 05/18/2001						
COMMENTS:						
[ITEM 36C] APPROACH RAILING RATING: NOT PROVIDED-0						
RATING : 05/18/2001						
COMMENTS:						
Design_No = S0532						
Page 2						
This report contains information that is protected from disclosure by federal law, 23 USC Section 409 and the Missouri Open Records Law (Sunshine Act), Section 610.021 RSMo. Please review MoDOT's policy and procedure manual on the Sunshine Act before releasing any of the information contained herein.						

		Missouri Department of Transportation State Bridge Inspection Report				September 22, 2025 9:08:31AM			
COUNTY: CAPE GIRARDEAU		DISTRICT: SE		CLASS: STATBR		FED-ID: 8750		BRIDGE: S0532	
[ITEM 36D] RAIL END TREATMENT RATING: NOT PROVIDED-0				RATING : 05/18/2001		COMMENTS:			
APPROACH PAVEMENT: *Overall condition assigned for each approach pavemenet component is shown below.									
<u>MATERIAL</u> ASPHALT		<u>CONSTRUCTION</u> BITUMINOUS MAT		<u>DIRECTION</u> BOTH		<u>CONDITION*</u> GOOD		<u>COMMENTS</u>	
DRAINAGE, EXPANSION DEVICES, BANK/SLOPE, AND DECK PROTECTIVE COMPONENTS									
<u>DECK PROTECTIVE COMPONENTS:</u>									
<u>SERIES TYPE-#</u> MAIN SERIES-1		<u>COMPONENT</u> WEARING SURFACE		<u>MATERIAL</u> ASPHALT		<u>CONSTRUCTION</u> BITUMINOUS MAT		<u>THICKNESS</u> 1 IN	
<u>COMMENT:</u>						<u>YEAR APPLIED</u> 2019		<u>MANUFACTURE</u>	
		<u>OVERALL CONDITION</u> VERY GOOD							
<u>COMMENT:</u>		DECK PROTECTION		NOTAPPLICABLE		NONE			
<u>COMMENT:</u>		MEMBRANE		NOTAPPLICABLE		NONE			
<u>DRAINAGE COMPONENTS:</u>									
<u>COMPONENT</u> DRAINAGE		<u>MATERIAL</u> REINFORCED CONCRETE		<u>CONSTRUCTION</u> CURB OUTLET		<u>DIRECTION</u>		<u>COMMENTS</u>	
<u>EXPANSION DEVICE COMPONENTS:</u>									
<u>SUB UNIT-#</u> ABUTMENT-1		<u>SUB LABEL</u>		<u>COMPONENT</u> CLOSED EXPANSION JOINT		<u>MATERIAL</u> FELT		<u>CONSTRUCTION</u> FILLED JOINT	
<u>COMMENT:</u>						<u>GAP</u>		<u>YEAR APPLIED</u>	
						<u>MANUFACTURE</u>		<u>OVERALL CONDITION</u>	
<u>BANK/SLOPE PROTECTION COMPONENTS:</u>									
<u>COMPONENT</u> BANK PROTECTION		<u>MATERIAL</u> ROCK		<u>CONSTRUCTION</u> GROUTED		<u>DIRECTION</u> BOTH		<u>COMMENTS</u>	
DECK COMPONENTS									
<u>SPAN TYPE-#</u> MAIN SPANS-1		<u>COMPONENT</u> DECK		<u>MATERIAL</u> REINFORCED CONCRETE		<u>CONSTRUCTION</u> CAST-IN-PLACE		<u>COMMENTS</u> (ROBINC3, 11/16/2015)--DECK SLIDING & ROTATING ON BEAMS, APPROX 3 1/2" (DENNIB1, 11/29/2016)--DECK NOT TOUCHING SOUTH GIRDER AT CENTER ENDS DECK NOT TOUCHING NORTH GIRDER AT EAST END (DENNIB1, 11/29/2016)--MADE MARK AT SE END TO CHECK FOR FUTURE MOVEMENT OF DECK	
<u>CONDITION</u> DELAMINATION MAP CRACKS SHIFTED SPALLS TRANSVERSE CRACKS		<u>LOCATION 1</u> THROUGHOUT THROUGHOUT THROUGHOUT THROUGHOUT THROUGHOUT		<u>LOCATION 2</u>		<u>SEVERITY</u> MODERATE FEW 4 INCH MINOR MODERATE		<u>MEASUREMENT</u> <u>COMMENT</u> (CROCKC1, 11/29/2018)--DECK IS ROTATING 4 1/2 INCHES OUT OF ALIGNMENT (SHUNAT1, 04/04/2018)--W/ EXPOSED REBAR (SHUNAT1, 04/04/2018)--W/ EFFLO AND RUST STAINS	
SUPERSTRUCTURE COMPONENTS									
Design_No = S0532									
Page 3									
This report contains information that is protected from disclosure by federal law, 23 USC Section 409 and the Missouri Open Records Law (Sunshine Act), Section 610.021 RSMo. Please review MoDOT's policy and procedure manual on the Sunshine Act before releasing any of the information contained herein.									



		<div>Missouri Department of Transportation</div> <div>State Bridge Inspection Report</div>				<div>September 22, 2025</div> <div>9:08:31AM</div>									
COUNTY: CAPE GIRARDEAU		DISTRICT: SE		CLASS: STATBR		FED-ID: 8750		BRIDGE: S0532							
WING PILES		TIMBER		OTHER											
<div><div>CONDITION</div><div>DECAYING</div></div>		<div><div>LOCATION 1</div><div>THROUGHOUT</div></div>		<div><div>LOCATION 2</div></div>		<div><div>SEVERITY</div><div>MODERATE</div></div>		<div><div>MEASUREMENT</div><div></div></div>		<div><div>COMMENT</div></div>					
BACKWALL		TIMBER		PLANKS											
<div><div>CONDITION</div><div>OTHER</div></div>		<div><div>LOCATION 1</div><div>THROUGHOUT</div></div>		<div><div>LOCATION 2</div></div>		<div><div>SEVERITY</div><div>NOT APPLICABLE</div></div>		<div><div>MEASUREMENT</div><div></div></div>		<div><div>COMMENT</div></div>					
FIXED BEARING		STEEL		FLAT PLATE											
<div><div>CONDITION</div></div>		<div><div>LOCATION 1</div></div>		<div><div>LOCATION 2</div></div>		<div><div>SEVERITY</div></div>		<div><div>MEASUREMENT</div></div>		<div><div>COMMENT</div></div>					
OVER/UNDER ROUTES CLEARANCE INFORMATION															
<div><div>CLEARANCES OVER DECK</div><div>VERTICAL CLEARANCE TYPE**</div></div>		<div>**NOTE: Vertical clearances for permitting purposes are taken as 2 inches less than the actual field measured clearance.</div> <table><tr><td>VALUE</td><td>DIRECTION</td><td>DATE</td><td>COMMENT</td></tr></table>										VALUE	DIRECTION	DATE	COMMENT
VALUE	DIRECTION	DATE	COMMENT												
<div><div>CLEARANCES UNDER BRIDGE</div><div>RECORD #</div><div>ROUTE</div><div># LANES</div><div>DIRECTION OF TRAFFIC</div><div>RIGHT LATERAL CLEARANCE</div><div>LEFT LATERAL CLEARANCE</div><div>UR-ID</div></div>		<div>**NOTE: Vertical clearances for permitting purposes are taken as 2 inches less than the actual field measured clearance.</div> <table><tr><td>VALUE</td><td>DIRECTION</td><td>DATE</td><td>COMMENT</td></tr></table>										VALUE	DIRECTION	DATE	COMMENT
VALUE	DIRECTION	DATE	COMMENT												
STRUCTURE PAINT INFORMATION															
CONDITION: GOOD		RUST AMOUNT : 8=.1% OF SURFACE RUSTED				STEEL TONS : 8									
<div><div>ORIGINAL PAINT</div><div>PAINT TYPE :</div><div>NAME :</div><div>PAINT COLOR :</div><div>PAINT YEAR :</div><div>MILS :</div></div>		<div><div>CONTRACT REPAINT</div><div>PAINT TYPE :</div><div>NAME :</div><div>PAINT COLOR :</div><div>PAINT YEAR :</div><div>MILS :</div></div>				<div><div>DEPARTMENT REPAINT</div><div>PAINT TYPE : Z SYSTEM</div><div>NAME : ZINC PRIMER ONLY</div><div>PAINT COLOR : ALUMINUM</div><div>PAINT YEAR : 1998</div><div>MILS : 8</div><div>MANUFACTURE :</div><div>SURFACE PREP :</div></div>									
REQUESTED WORK ITEMS															
GENERAL WORK COMMENTS:															
Design_No = S0532															
<div>Page 5</div> <div>This report contains information that is protected from disclosure by federal law, 23 USC Section 409 and the Missouri Open Records Law (Sunshine Act), Section 610.021 RSMo. Please review MoDOT's policy and procedure manual on the Sunshine Act before releasing any of the information contained herein.</div>															

		Missouri Department of Transportation				September 22, 2025																																														
		State Bridge Inspection Report				9:08:31AM																																														
COUNTY: CAPE GIRARDEAU		DISTRICT: SE		CLASS: STATBR		FED-ID: 8750																																														
						BRIDGE: S0532																																														
RESPONSIBILITY DISTRICT ROUTINE		LOCATION SEE COMMENT		ITEM PLACE RIP-RAP		CATEGORY SLOPE																																														
				PRIORITY 3		DATE 11/14/2016																																														
						WORK ITEM COMMENT (BLALOR1, 11/13/2014)--@ ABUTMENTS																																														
UTILITY ATTACHMENTS																																																				
UTILITY		OWNER		METHOD		MEASUREMENT TYPE																																														
				VALUE		NUMBER																																														
						UTILITY ATTACHMENT COMMENT																																														
PROGRAM NOTES INFORMATION																																																				
YEAR 2027		PROJECT # SE0045		MONTH LET 1		YEAR LET 2027																																														
				ITEMS REPLACE BRIDGE		COMMENT																																														
COMPUTER GENERATED RATINGS AND DEFICIENCY ITEMS				***ADVANCED SIGN INFORMATION***																																																
<p>NOTE: The items listed in this section are updated whenever computer edits are ran on a structure after the inspection updates have been entered in to TMS.</p> <table><tr><td><u>Rated Item</u></td><td><u>Rating</u></td><td><u>Rating Date</u></td></tr><tr><td>[Item 67] Structure Evaluation Rating:</td><td>4-MEETS MINIMUM TOLERABLE</td><td>12/29/2016</td></tr><tr><td>[Item 68] Deck Geometry Rating:</td><td>2-BASICALLY INTOLRBLE REQ</td><td>3/5/2018</td></tr><tr><td>[Item 69] Underclearance:</td><td>N-NOT APPLICABLE</td><td>5/18/2001</td></tr><tr><td>Sufficiency Rating:</td><td>47.7%</td><td>7/16/2025</td></tr><tr><td>Deficiency:</td><td>FUNCTIONAL</td><td>7/16/2025</td></tr><tr><td>Funding Eligibility:</td><td></td><td>----</td></tr><tr><td>Estimated New Structure Length:</td><td></td><td>----</td></tr><tr><td>Estimated Structure Cost:</td><td></td><td>----</td></tr><tr><td>Estimated Total Project Cost:</td><td></td><td>----</td></tr><tr><td>Year of Cost Estimate:</td><td></td><td>----</td></tr></table> <p>NOTE: The above structure length and cost estimates are computer generated using algorithms in the TMS system. These algorithms are generalized to use NBI items to come up with a new structure length and width to calculate a new area which is taken times a representative cost per square foot. The actual structure size and cost may vary significantly from these numbers once site specific engineering is done.</p>				<u>Rated Item</u>	<u>Rating</u>	<u>Rating Date</u>	[Item 67] Structure Evaluation Rating:	4-MEETS MINIMUM TOLERABLE	12/29/2016	[Item 68] Deck Geometry Rating:	2-BASICALLY INTOLRBLE REQ	3/5/2018	[Item 69] Underclearance:	N-NOT APPLICABLE	5/18/2001	Sufficiency Rating:	47.7%	7/16/2025	Deficiency:	FUNCTIONAL	7/16/2025	Funding Eligibility:		----	Estimated New Structure Length:		----	Estimated Structure Cost:		----	Estimated Total Project Cost:		----	Year of Cost Estimate:		----	<table><tr><td>SIGN #</td><td>SIGN TYPE</td><td>PROBLEM</td><td>PROBLEM DIRECTION</td></tr><tr><td>1</td><td></td><td>YIELD TO ONCOMING TRAFFIC</td><td></td></tr><tr><td>2</td><td></td><td>B - ONE LANE BRIDGE</td><td></td></tr></table>				SIGN #	SIGN TYPE	PROBLEM	PROBLEM DIRECTION	1		YIELD TO ONCOMING TRAFFIC		2		B - ONE LANE BRIDGE	
				<u>Rated Item</u>	<u>Rating</u>	<u>Rating Date</u>																																														
				[Item 67] Structure Evaluation Rating:	4-MEETS MINIMUM TOLERABLE	12/29/2016																																														
				[Item 68] Deck Geometry Rating:	2-BASICALLY INTOLRBLE REQ	3/5/2018																																														
				[Item 69] Underclearance:	N-NOT APPLICABLE	5/18/2001																																														
Sufficiency Rating:	47.7%	7/16/2025																																																		
Deficiency:	FUNCTIONAL	7/16/2025																																																		
Funding Eligibility:		----																																																		
Estimated New Structure Length:		----																																																		
Estimated Structure Cost:		----																																																		
Estimated Total Project Cost:		----																																																		
Year of Cost Estimate:		----																																																		
SIGN #	SIGN TYPE	PROBLEM	PROBLEM DIRECTION																																																	
1		YIELD TO ONCOMING TRAFFIC																																																		
2		B - ONE LANE BRIDGE																																																		
				OUTFALL INSPECTION INFORMATION																																																
				# OUTFALLS: 4																																																
				INSPECTOR: ZACHARY LEE																																																
				STATUS: PASS																																																
				DATE: 11/09/2023																																																
				NOTES:																																																



Missouri Department of Transportation
Bridge Inventory and Inspection System
Structural Inventory & Appraisal Sheet

September 22, 2025
9:19:52am

COUNTY : CAPE GIRARDEAU BRIDGE : S0532 REVIEW STATUS : APPROVED NBI STATUS : T
RECORD TYPE : ROUTE CARRIED 'ON' STRUCT RUN DATE : 7/16/2025 SUBMITTAL YEAR : 2025

GENERAL STRUCTURE INFORMATION			ROUTE DESIGNATION INFORMATION		
1	State	MISSOURI	5A	Record Type	ROUTE CARRIED 'ON' STRUCT
2	District	SE	5B	Route Signing Prefix	MO
3	County	CAPE GIRARDEAU	5C	Designated Level of Service	MAINLINE
8	Federal ID No.	8750	5D	Route Number	0000N
27	Year Built	1932	5E	Directional Suffix	NOT APPLICABLE
106	Year Reconstructed	0	7	Facility Carried	RT N E
42A	Type of Service On	HIGHWAY	12	Base Hwy. Network	NO
21	Structure Maintenance	STATE HIGHWAY AGENCY	13A	LRS Inventory Route No.	
22	Structure Owner	STATE HIGHWAY AGENCY	13B	Subroute No.	
33	Br. Median Code	NO MEDIAN	20	Toll Status	ON FREE ROAD
37	Historical Significance	NOT ELIGIBLE FOR NR OF HP	26	Functional Classification	07-RURAL MAJOR COLLECTOR
101	Parallel Struc Desg	NONE EXISTS	28A	Lanes on Structure	01
103	Temporary Structure	NOT TEMPORARY	100	STRAHNET Designation	RTE NOT A DEFENSE HWY
112	NBIS Bridge Length	YES	104	National Highway System	NOT ON NHS
			105	Federal Lands Highway	NOT APPLICABLE
			110	Designated Nat. Network	NO
STRUCTURE LOCATION INFORMATION			STRUCTURE TRAFFIC INFORMATION		
4	Place	WELCH	29	AADT	1350
	Code	78280	30	AADT Year	2024
9	Location	S 1 T 29 N R 11 E	102	Direction of Traffic	ONE LANE BRIDGE FOR 2-WAY
11	Milepoint	14.11 miles	109	AADT Truck Percent	4%
16	Latitude	37 D 12 M 27 S	114	Future AADT	2093
17	Longitude	89 D 46 M 54 S	115	Future AADT Year	2044
UNDERRECORD INFORMATION			STRUCTURE GEOMETRIC INFORMATION		
6	Features Intersected	SMALL CR	10	Inventory Rte. Vert. Clear	99 Ft. 99 In.
42B	Type of Service Under	WATERWAY	19	By pass Detour Length	21.88 miles
28B	Lanes Under Structure	00	32	Approach Roadway Width	20 Ft. 0 In.
54A	Vert. Clearance Ref.	N/A	34	Skew	0.00 Degrees
54B	Vert. Clearance	0 Ft. 0 In.	35	Struct. Flared	NO
55A	Rt. Lat Clear Ref.	N/A	47	Total Horiz. Clear	20 Ft. 0 In.
55B	Rt. Lat Clearance	0 Ft. 0 In.	48	Maximum Span Length	48 Ft. 11 In.
56	Left Lat Clearance	0 Ft. 0 In.	49	Structure Length	48 Ft. 11 In.
38	Navigation Control	PERMIT NOT REQ	50A	Left Curb/Sidewalk Width	0 Ft. 0 In.
39	Nav Vertical Clear	0 Ft. 0 In.	50B	Right Curb/Sidewalk Width	0 Ft. 0 In.
40	Nav Horizontal Clear	0 Ft. 0 In.	51	Curb to Curb Br. Width	20 Ft. 0 In.
111	Nav. Pier Protection		52	Deck Width (Out-Out)	20 Ft. 12 In.
116	Nav. Cl. Vert. Clear		53	Vert. Clearance Over Deck	99 Ft. 99 In.

Design_No = S0532 and Inventory_Appraisal_Submittal_Year = 2025



Missouri Department of Transportation
Bridge Inventory and Inspection System
Structural Inventory & Appraisal Sheet

September 22, 2025
9:19:52am

COUNTY : CAPE GIRARDEAU BRIDGE : S0532 REVIEW STATUS : APPROVED NBI STATUS : T
RECORD TYPE : ROUTE CARRIED 'ON' STRUCT RUN DATE : 7/16/2025 SUBMITTAL YEAR : 2025

LOAD RATING AND POSTING INFORMATION			MATERIAL/CONSTRUCTION INFORMATION		
31	Design Load	H 10	43A	Main Struc. Mat type	STEEL
41	Structure Status	POSTED FOR LOAD	43B	Main struc Constr. Type	STRINGER/MULTIBEAM - GRD
63	Oper. Rating Meth.	LOAD FACTOR	45	# of Main Spans	1
64	Operating Rating	23 Tons.	44A	Appr Struc. Mat type	000
65	Inventory Rating Meth	LOAD FACTOR	44B	Appr Struc. Cnstr. type	000
66	Inventory Rating	14 Tons.	46	# of Approach Span	0
70	Bridge Posting Code	30.0-39.9% BELOW	107	Deck Mat/Constr.	1 CONCRETE CIP
PROPOSED IMPROVEMENT INFORMATION			108A	Wear Surf Mat/Constr.	6 BITUMINOUS
Sufficiency Rating 47.7 Percent			108B	Membrane Mat/Constr.	0 NONE
Deficiency Rating FUNCTIONAL			108C	Deck Protect Mat/Constr.	0 NONE
Funding Eligibility FULL			CONDITION RATING INFORMATION		
75A	Proposed Work	REPLACEMENT SUBSTND LOAD	58	Deck Cond. Rating	6
75B	Work Done By	Contract	59	Superstructure Cond. Rating	6
76	New Struc Length	72 Ft. 2 In.	60	Substructure Cond. Rating	5
94	Struc Improve Cost	\$ 418,000	61	Channel /Channel Protection Cond. Rating	6
95	Roadway Improve Cost	\$ 42,000	62	Culvert Cond. Rating	N
96	Total Project Cost	\$ 626,000	INSPECTION INFORMATION		
97	Year of Cost Estimates	2025	90	Gen. Insp Date	11 / 24
APPRAISAL RATING INFORMATION			91	Gen. Insp. Frequency	12 Months
36A	Br. Rail App. Rating	DOES NOT MEET ACCEPT STND	92A	Frac. Critical Inspection	N Months
36B	Transition Rail App. Rating	DOES NOT MEET ACCEPT STND	93A	Frac. Critical Insp. Date	
36C	Approach Rail App. Rating	DOES NOT MEET ACCEPT STND	92B	Underwater Inspection	N Months
36D	Rail End Treat. App. Rating	DOES NOT MEET ACCEPT STND	93B	Underwater Insp. Date	
67	Struc Eval App. Rating	4	92C	Special Inspection	N Months
68	Deck Geometry App. Rating	2	93C	Special Inspection Date	
69	Underclearance App. Rating	N	BORDER BRIDGE INFORMATION		
71	Waterway Adeq. App. Rating	6	98	Neighboring State Code	
72	Approach Road App. Rating	6	98B	Neighboring State % Respon	
113	Scour Assess App. Rating	8	99	Neighboring State Struc. No.	
APPROVED POSTING INFORMATION			FIELD POSTING INFORMATION		
Approved Posting Category S-5			Field Posting Category S-5		
Ton1 Ton2 Ton3			Ton1 Ton2 Ton3		
Tonnage Values for Posting Sign 15			Tonnage Values for Posting Sign 15		
General Text for Posting Sign			General Text for Posting Sign		
CENTERLINE OF BRIDGE AND TRUCKS OVER 15 TONS 15 MPH ON BRIDGE.			CENTERLINE OF BRIDGE AND TRUCKS OVER 15 TONS 15 MPH ON BRIDGE.		

Design_No = S0532 and Inventory_Appraisal_Submittal_Year = 2025