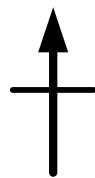


Indicated North
by Arrow



Entire Corridor I-435 to Adams Dairy Bike/Ped Crash Summary			
Severity	Day	Night	Total
Fatal	0	13	13
Serious	8	17	25
Minor	9	15	24
PDO	1	0	1
Total	18	45	63

I-435 to Blue Ridge Cutoff

Bike/Ped Crash Summary			
Severity	Day	Night	Total
Fatal	0	0	0
Serious	2	0	2
Minor	0	2	2
PDO	0	0	0
Total	2	2	4

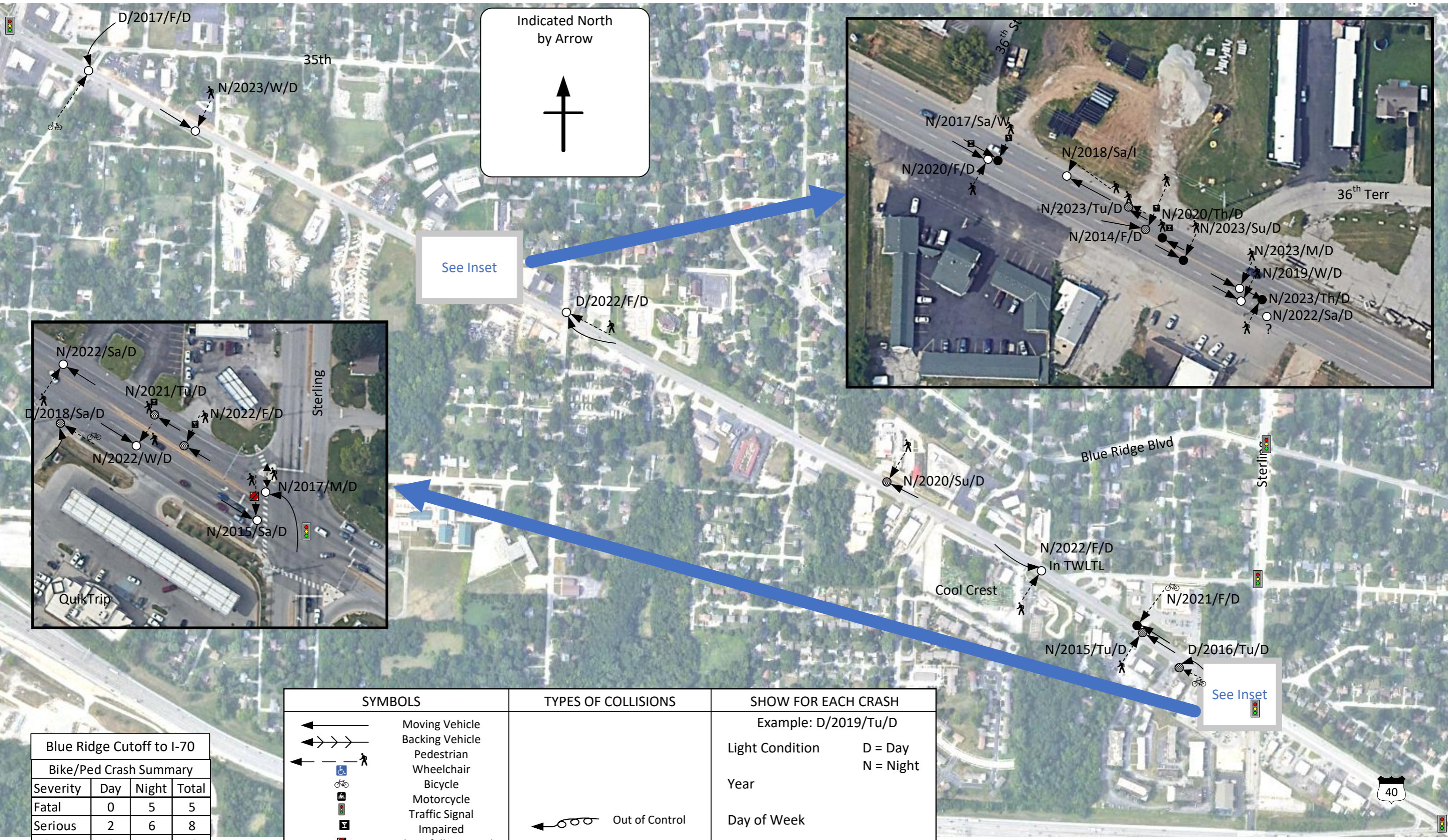
SYMBOLS	TYPES OF COLLISIONS	SHOW FOR EACH CRASH
Moving Vehicle Backing Vehicle Pedestrian Wheelchair Bicycle Motorcycle Traffic Signal Impaired Did not follow signal Fatal Crash Disabling Injury Minor Injury	Out of Control Right Angle	Example: D/2019/Tu/D Light Condition D = Day N = Night Year Day of Week Pavement D = Dry W = Wet I = Ice

Number of serious crashes (F, SSI, DI) involving impaired Bike, Ped, and/or driver

Class	Yes	No	Unknown	Total
Bike	0	4	3	7
Ped	15	3	13	31

Bike/Ped crashes on US 40 from Blue Ridge Cutoff to I-70
 TIME PERIOD COVERED: Rolling 10 years from 2014-2024

DATE July 31, 2024
 PREPARED BY JJS



Blue Ridge Cutoff to I-70			
Bike/Ped Crash Summary			
Severity	Day	Night	Total
Fatal	0	5	5
Serious	2	6	8
Minor	2	11	13
PDO	0	0	0
Total	4	22	26

SYMBOLS	TYPES OF COLLISIONS	SHOW FOR EACH CRASH
Moving Vehicle Backing Vehicle Pedestrian Wheelchair Bicycle Motorcycle Traffic Signal Impaired Did not follow signal Fatal Crash Disabling Injury Minor Injury	Out of Control Right Angle	Example: D/2019/Tu/D Light Condition D = Day N = Night Year Day of Week Pavement D = Dry W = Wet I = Ice

