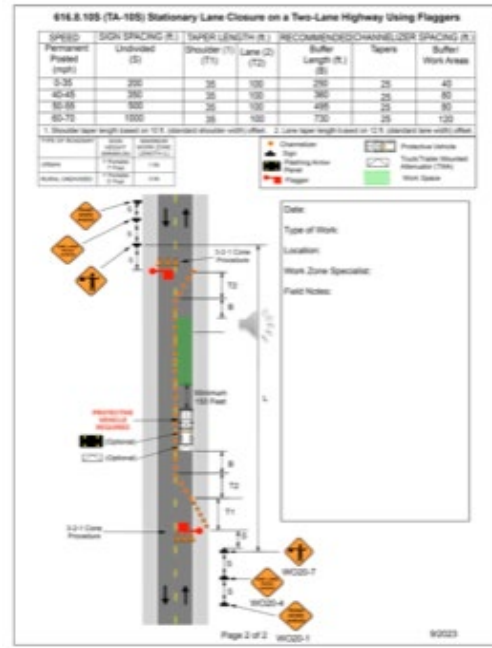
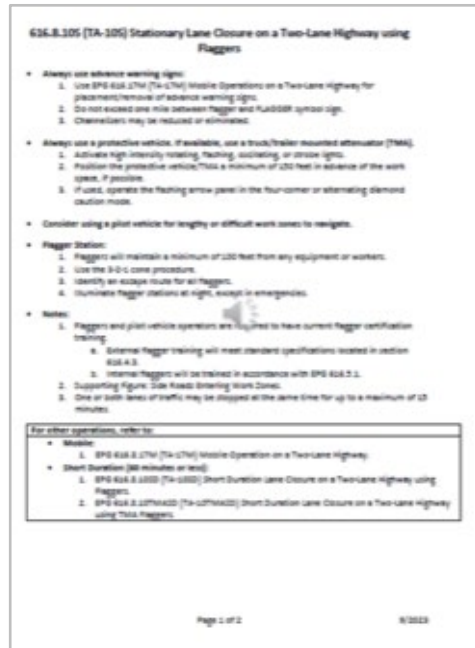


Projects

April 2025

Prepared by Transportation Planning
Missouri Department of Transportation

Typical Applications



Description and Benefit

The original work zone typical applications (TA) was a one-page document showing the work zone figure and guidance, but did not have a flow to help setup the work zone. The TA sub-team develops a new multi-page typical application. The first page is dedicated to wording description, and the following pages are the figures and diagrams. The wording is now bulleted to provide focused direction. The wording directs how to setup work zones with Advanced Warning Area, Transition Area, Activity Area and Termination Area. This innovation provides a much clearer direction on how to setup a work zone.

For More Information Contact

Central Office – Highway Safety and Traffic Division

Daniel Smith at Daniel.Smith@modot.mo.gov or 573-526-4329.

St. Louis – Maintenance

Dusty Henson at James.Henson@modot.mo.gov or 314-205-7317.