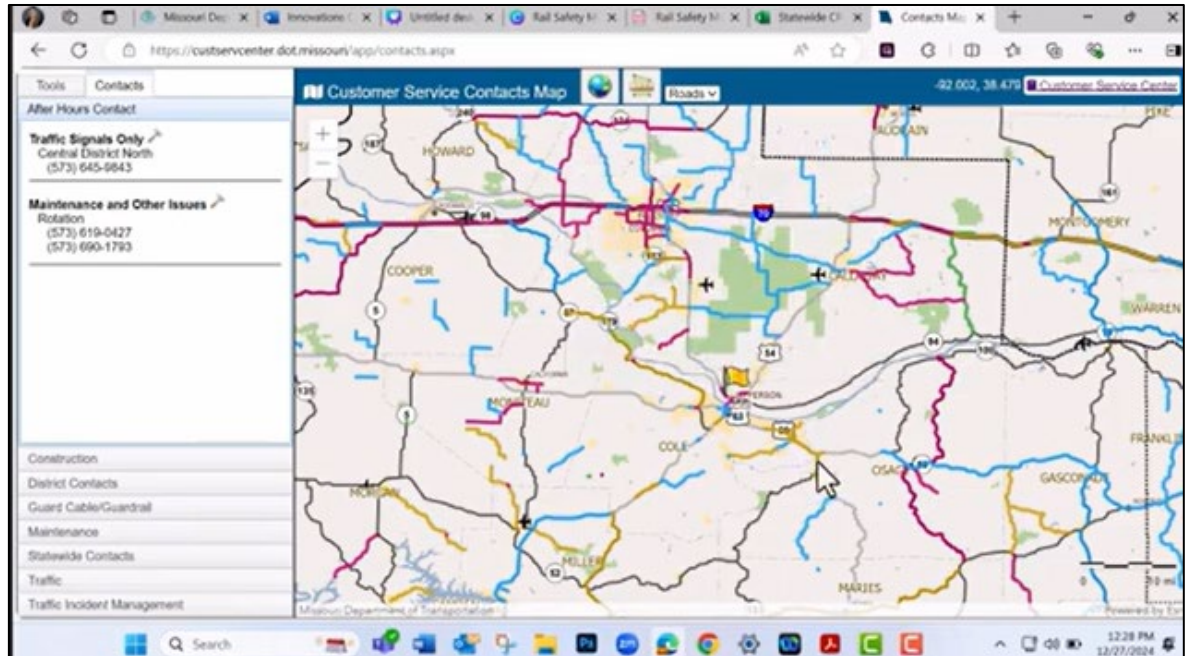


Projects

April 2025

Prepared by Transportation Planning
Missouri Department of Transportation

Contacts Map STIP Layer



Description and Benefit

The Communications and Information Systems Divisions worked together to create an innovation that helps both MoDOT customers and our Customer Service Representatives. The innovation is a STIP layer on the contacts map that allows Customer Service Representatives to view upcoming road work with the year by turning on the STIP layer. This allows for Customer Service Representatives to gain quick access to STIP information and quickly relay this information to inquiring customers.

For More Information Contact

Central Office – Communications Division

Katelyn Plassmeyer at Katelyn.Plassmeyer@modot.mo.gov or 573-469-5665.

Central Office – Communications Division

Taylor Brune at Taylor.Brune@modot.mo.gov or 573-522-3796.