



ADDENDUM NUMBER 6

Project Number _____ Federal No. STBG-3001(007); City No. 89008525

Project Title N. Oak Trafficway Reconstruction – 42nd to 46th Street

ISSUE DATE: 07/09/2025

Bidders are hereby notified that the Bidding and Contract Documents for the above project, for which Bids are to be received on July 15, 2025, are amended as follows:

Information to Bidders: The following is provided to Bidders for information only:

Q1	<ul style="list-style-type: none"> Line 75 calls for (QTY 19) Pole 35' Valmont Aluminum with 8' Truss Arm-Signal. Sheet 110 and 111 detail 40' poles with either 10' arms or 15' arms. What is needed?
A1	<ul style="list-style-type: none"> The 6" Helix with retainer foundation detail has been added for SH2, Sheet 110. The plans previously indicated a 40' pole mounting height per the Equipment List on Sheet 111. The plans also include both 10' and 15' arms. These are separated out in the Equipment List (Sheet 111), Assembly Quantity (Sheet 110), and the Photometric Plans (Sheets 124). The Summary of Quantities descriptions have been revised.
Q2	<ul style="list-style-type: none"> Sheet 110 indicates some poles have both 10' and 15' arms (ex: NNE5003) but display only one arm on the plan sheets. What is correct?
A2	<ul style="list-style-type: none"> The Assembly Quantity Schedule (Sheet 110) has been revised to reflect the 10ft and 15 truss arms. Additional details for the 30ft Valmont pole and the 6" Helix with retainer foundation have been added to Sheet 110.
Q3	<ul style="list-style-type: none"> I count (QTY 19) poles total. Line 73 indicates there are (QTY 40) Screw Base Foundation with Integral Cable Retainer. Are there more poles I'm missing?
A3	<ul style="list-style-type: none"> The quantity of 19 is correct for the 40ft poles. Per the missing pole comment below, there will be three 30ft poles. <p>The Summary of Quantities has been revised.</p>

Q4	<ul style="list-style-type: none"> • Pole NNE5759 is listed on sheet 116 but nowhere to be found in the assembly quantity table on sheet 110.
A4	<p>The Assembly Quantity schedule has been revised to include this pole.</p>
Q5	<ul style="list-style-type: none"> • Pole NNE5010 is listed on sheet 118, but nowhere to be found in the assembly quantity table on sheet 110.
A5	<ul style="list-style-type: none"> • This pole needs to be a 40ft pole with a 15ft Truss. <p>The Assembly Quantity schedule has been revised.</p>
Q6	<ul style="list-style-type: none"> • New fixture SL3, screw-in foundation, and fuses are listed for Pole NNE0X53 on sheet 110 but I can't find if on the plan sheets.
A6	<p>The Assembly Quantity schedule has been revised to reflect the correct pole number of NNE5009, where previously shown as NNE0X53. The pole shown on the plan sheet 117, labeled as NNE0X53 XL, has been deleted.</p> <p>Pole NNE5008 shown on Sheet 117 has been revised to a Type SL3.</p>
Q7	<ul style="list-style-type: none"> • The summary of quantities on sheet 111 are not lining up for what is being asked for in the unit prices (attached).
A7	<ul style="list-style-type: none"> • The controller ID quantities are listed as a quantity of 2. This remains. Additional controller information is shown on the Controller Schedules on Sheet 111 - IDs are NNE9752 and NNE9000. <p>The plans previously indicated a 40' pole mounting height per the Equipment List on Sheet 111, this remains.</p> <p>The Summary of Quantities description has been revised.</p> <ul style="list-style-type: none"> • A 30ft pole with a 6ft arm has been added.
Q8	Request for additional Equipment List corrections as follows:
A8	<ul style="list-style-type: none"> • a. Fixtures are 3000K, not 4000K for the Type D and Type B. The Equipment List has been revised to reflect 3000K. • b. 40ft poles are correct per photometrics (Summary of Quantity description has been corrected.)

	<ul style="list-style-type: none"> • c. 30-foot pole and a small foundation are missing. These details have been added. • d. In the description for the controller, remove the “60A Class J” fuses. The new electrically held breakers don’t require this fuse anymore. The fuse reference has been removed.
Q9	<ul style="list-style-type: none"> • A light is missing on NE Greenfield Rd per my original review comments. The demolition sheets call out the removal of a twin light in an island that is being removed, but a new fixture isn’t being installed in its place. A 30ft pole with a Type B fixture is missing.
A9	<ul style="list-style-type: none"> • Fixture NNE5011 has been added - Type SL3 (30' pole with a 6' arm).
Q10	<ul style="list-style-type: none"> • Will the temporary concrete safety barrier for this project need to be pinned using earth pins? In phase II the barrier is setting .05’ from the edge of the work area with an approximate edge drop of 15” and in phase III the barrier sets right on the edge of the work area with the same edge drop.
A10	Per MoDOT standards, the barrier should be anchored.
Q11	line 75 calls for (QTY 19) Pole 35’ Valmont Aluminum with 8’ Truss Arm-Signal. Sheets 110 and 111 detail 40’ poles with either 10’ arms or 15’ arms.
A11	The unit price form is updated

Bidding Requirements

1. Delete and replace the following section(s):
 - a. Delete Document, Form 00412 Bid Unit Prices and replace with the following Document, Form 00412 Unit Prices:

Drawings:

1. ES201 ROADWAY LIGHTING NEW PLANS_R1
2. ES004 GENERAL NOTES AND SCHEDULES_R1
3. ES002 GENERAL NOTES AND SCHEDULES_R1
4. ES003 GENERAL NOTES AND SCHEDULES_R1

NOTE: Bidders must acknowledge receipt of this Addendum by listing the number and date, where provided, on the Bid Form - Document 00410. FAILURE TO ACKNOWLEDGE RECEIPT OF ADDENDUM MAY SUBJECT BIDDER TO DISQUALIFICATION.



00412 – UNIT PRICES

Project Number Federal No. STBG-3001(007); City No. 89008525

Project Title N. Oak Trafficway Reconstruction – 42nd to 46th Street

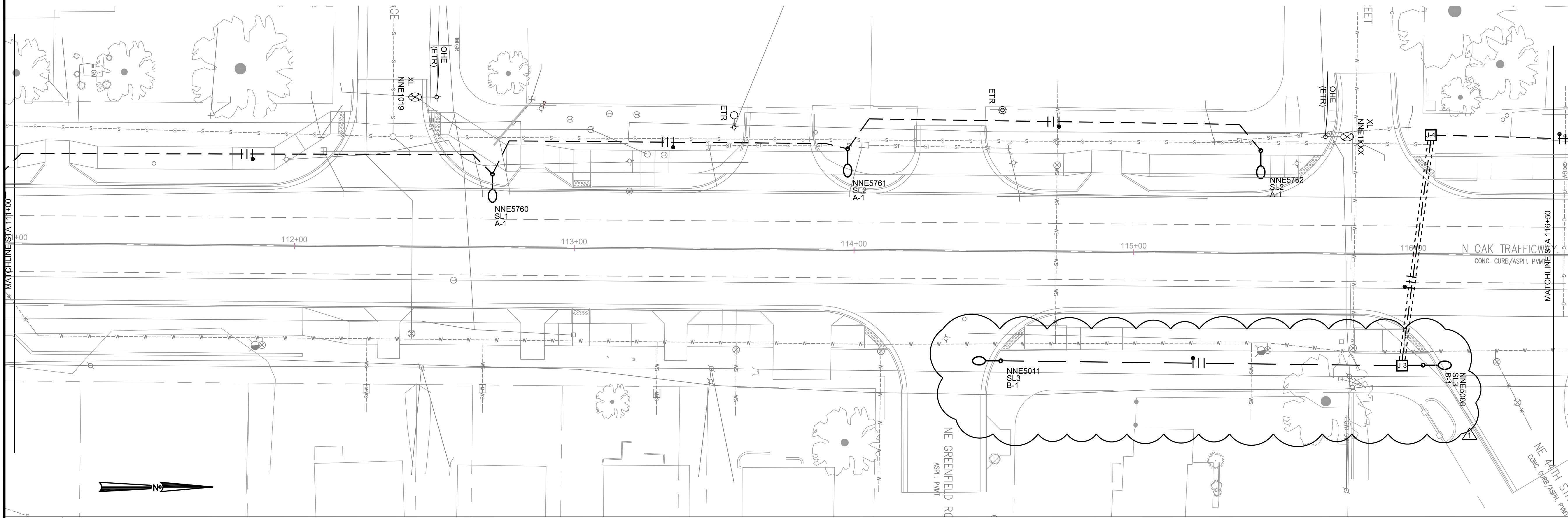
NOTE: IN THE EVENT OF DISCREPANCY, UNIT PRICE SHALL GOVERN

Item No.	Unit	Quantity	Item Description	Unit	Extension
1	LS	1	Clearing Grubbing and Demolition		
2	LS	1	Mobilization		
3	CY	7,000	Total Unclassified Excavation		
4	CY	1,000	Embankment with Excavated Material		
5	SY	15,000	2" Type 5-01 Asphaltic Concrete Surface		
6	SY	15,000	9" Type 1 ACC Base		
7	SY	16,300	6" Untreated Compacted Aggregate		
8	SY	16,300	6" Compacted Subgrade 95% of standard max density		
9	SY	2,445	Subgrade Stabilization (Fly Ash or Cement) (9")		
10	SY	810	Mill and Overlay		
11	SY	3,800	6" Shared Use Path		
12	SY	3,800	4" Untreated Compacted Aggregate		
13	SY	300	ADA Ramp		
14	SY	640	Residential Driveway (6")		
15	SY	730	Commercial Driveway (8")		
16	LF	6,000	Curb & Gutter Type CG-1 (wet)		
17	SF	5,165	Retaining Wall		
18	LF	973	(42 in.) Pedestrian Fence (Structures)		
19	LF	20	Storm Sewer Pipe (8" PVC)		
20	LF	435	Storm Sewer Pipe (15" RCP)		
21	LF	761	Storm Sewer Pipe (18" RCP)		
22	LF	167	Storm Sewer Pipe (24" RCP)		
23	LF	437	Storm Sewer Pipe (30" RCP)		
24	LF	5	Storm Sewer Pipe (24" CMP)		
25	EA	1	Storm Sewer Structure (Curb Inlet Type I 5'X3')		
26	EA	2	Storm Sewer Structure (Curb Inlet Modified Type I 5'X3')		
27	EA	3	Storm Sewer Structure (Curb Inlet Type II 5'X3')		
28	EA	5	Storm Sewer Structure (Curb Inlet Modified Type I 8'X3')		

Item No.	Unit	Quantity	Item Description	Unit	Extension
29	EA	1	Storm Sewer Structure (Curb Inlet Type II 8'X3')		
30	EA	1	Storm Sewer Structure (Curb Inlet Modified Type I 11'X3')		
31	EA	1	Storm Sewer Structure (Curb Inlet Type II 11'X3')		
32	EA	2	Storm Sewer Structure (Field Inlet 4'X4')		
33	EA	11	Storm Sewer Structure (Manhole 4')		
34	EA	6	Storm Sewer Structure (Manhole 5')		
35	EA	1	Flared End Section (18" RCP)		
36	EA	2	Sanitary Sewer Cover Replacement		
37	EA	4	Sewer Manhole - Adjustment		
38	EA	13	Water Valve and Cut-off Adjustment		
39	EA	10	Water Meter Adjustment		
40	EA	5	Fire Hydrant Relocation		
41	SY	5,200	Sod		
42	SY	5,200	Topsoil		
43	SY	25	Riprap (1' Type II)		
44	LS	1	Contractor Furnished Survey		
45	LF	2,730	Silt Fence		
46	EA	19	Inlet Protectors		
47	SF	149	Rock Check Dams		
48	SF	1,200	Construction Entrance		
49	LS	1	Traffic Control		
50	LF	2,675	MoDOT Type F Temporary Concrete Safety Barrier		
51	LF	2,663	MoDOT Type F Temporary Concrete Safety Barrier (Relocate)		
52	EA	2	ABSORB 350 Crash Cushion		
53	LS	1	Traffic Signal Modifications		
54	EA	2	Controller Lighting Equipment Enclosure		
55	CY	2	Controller Pedestal Foundation		
56	EA	2	3/4" X 8' Copperweld Rod		
57	EA	22	Unfused Kit for Ground Wire		
58	EA	44	Fuse Holders		
59	EA	22	Identification Tags (Luminaire Poles)		
60	EA	40	Screw Base Foundation With Integral Cable Retainer		
61	EA	19	Cobrahead LED SL1/SL2		
62	EA	3	Cobrahead LED SL3		
63	EA	19	Pole 40' Valmont Aluminum		
64	EA	3	Pole 30' Valmont Aluminum with 6Ft Bracket Arm		
65	EA	13	10' Truss Arm		
66	EA	3	15' Truss Arm		
67	LF	1,230	#10 1-Conductor RHH/RHW/Use Copper		
68	LF	8,090	#8 1-Conductor RHH/RHW/Use Copper		

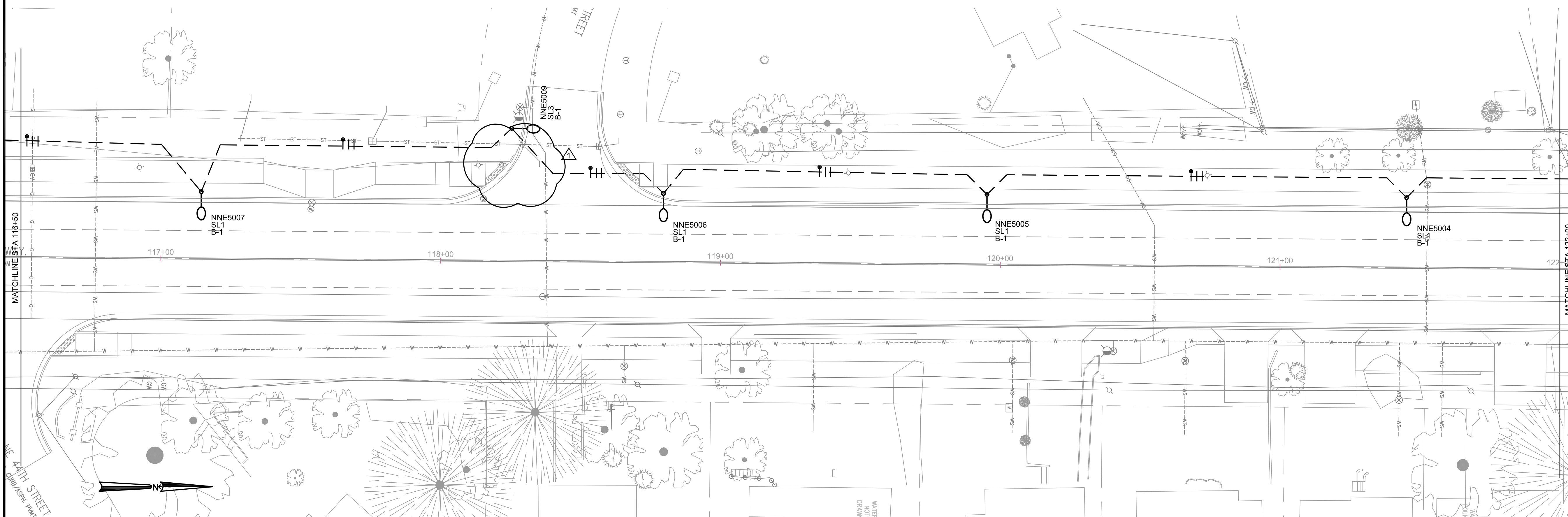
Item No.	Unit	Quantity	Item Description	Unit	Extension
69	LF	1,960	#6 1-Conductor RHH/RHW/Use Copper		
70	EA	4	Ingrade Junction Box Preformed Class III		
71	LF	3,170	Trenching and Backfill		
72	LF	170	Boring		
73	LF	200	3" PVC Schedule 40 Conduit		
74	LF	3,140	2" PVC Schedule 40 Conduit		
75	LF	1,500	Pavement Marking (6") (White Striped Including Spacing)		
76	LF	800	Pavement Marking (6") (White)		
77	LF	3,000	Pavement Marking (4") (Double Yellow)		
78	LF	50	Pavement Marking (24" Continental Stop Line) (White)		
79	EA	8	Pavement Marking Symbols (Arrows)		
80	LF	100	Pavement Marking (12" Solid Yellow Line)		
81	SF	59	Permanent Signing		
82	LF	70	Sign Post		
83	LF	30	Sign Post Footing		
84	EA	10	Sign Removal		
85	EA	7	Sign Relocation		
86	LS	1	Alternate #1 - Street Trees		
87	LS	1	Alternate #2 - Pedestrian Hybrid Beacon		
WATER REPLACEMENT					
88	EA	7	Straddle Blocks		
89	EA	6	Cap and Thrust Block		
90	EA	1	2" Air Release Valve		
91	LF	200	12" CL 52 DIP Zinc Coated W/ Double Polywrap		
92	EA	6	Temporary Flushing Assembly		
WATER REPLACEMENT TOTAL					
TOTAL WITHOUT ALTERNATIVES					
TOTAL WITH ALTERNATIVES					

This document, together with the concepts and designs presented herein, is intended only for the specific purpose and date for which it was prepared. Release of and improper reliance on this document without written authorization and approval by Kimley-Horn and Associates, Inc. shall be without liability to Kimley-Horn and Associates, Inc.



1 ROADWAY LIGHTING PLAN

SCALE: 1" = 20'-0"



2 ROADWAY LIGHTING PLAN

SCALE: 1" = 20'-0"

No.	REVISIONS	DATE	BY
1	ADDENDUM	7.8.25	

Kimley-Horn
 © 2025 KIMLEY-HORN AND ASSOCIATES, INC.
 KANSAS CITY, MO 64116
 PHONE: 816.234.5500
 WWW.KIMLEY-HORN.COM

ROADWAY LIGHTING
 NEW PLANS

NORTH OAK
 TRAFFICWAY
 KANSAS CITY, MO. 64116

ORIGINAL ISSUE:
 July 08, 2025

FEDERAL PROJECT NO.
 89008525/STBG-3001 (007)

SHEET NUMBER

117 OF 171



LIGHTWORKS INC.
 DESIGN-ENGINEERING

CONDUIT AND WIRE

FROM	TO	C-C DIST	STREETLIGHT CONDUIT RIGID IN TRENCH				STREETLT CONT. NO.	STREETLT CIRCUIT NO.	STREETLIGHT CABLE 6 AWG, 1 CONDUCTOR					STREETLIGHT CABLE 8 AWG, 1 CONDUCTOR					IN POLE CABLE 10 AWG, 1 COND					BORING (LF)	TRENCHING (LF)
			1" (LF)	1-1/2" (LF)	2" (LF)	3" (LF)			COND QTY	WIRE LENGTH	ADJUST 5% C-C	ADJUST 6FT PB	BID TOTAL	COND QTY	WIRE LENGTH	ADJUST 5% C-C	ADJUST 6FT PB	BID TOTAL	WIRE LENGTH	ADJUST 5% CON	BID TOTAL				
NORTH OAK EAST 42ND																									
SERVICE	CONT A	200.00				200																	200		
CONT A	J-1	50.00			50		A	1						3	150	8	6	164						50	
J-1	NNE5753	100.00			100		A	1						3	300	15	6	321	53	2	55			100	
J-1	J-2	80.00			80		A	1						3	240	12	6	258					80		
J-2	NNE5754	40.00			40		A	1						3	120	6	6	132	53	3	56			40	
J-2	NNE5755	150.00			150		A	1						3	450	23	6	479	53	3	56			150	
NNE5755	NNE5756	150.00			150		A	1						3	450	23	6	479	53	3	56			150	
NNE5756	NNE5757	150.00			150		A	1						3	450	23	6	479	53	3	56			150	
NNE5757	NNE5758	160.00			160		A	1						3	480	24	6	510	53	3	56			160	
NNE5758	NNE5759	140.00			140		A	1	3	420	21	6	447						53	3	56			140	
NNE5759	NNE5760	180.00			180		A	1	3	540	27	6	573						53	3	56			180	
NNE5760	NNE5761	130.00			130		A	1	3	390	20	6	416						53	3	56			130	
NNE5761	NNE5762	150.00			150		A	1	3	450	23	6	479						53	3	56			150	
NORTH OAK EAST 46TH																									
CONT B	J-3	50.00			50		B	1						3	150	8	6	164						50	
J-3	NNE5002	90.00			90		B	1						3	270	14	6	290						90.00	
NNE5002	NNE5003	130.00			130		B	1						3	390	20	6	416	53	3	56			130	
NNE5003	NNE5004	170.00			170		B	1						3	510	26	6	542	53	3	56			170	
NNE5004	NNE5005	155.00			155		B	1						3	465	23	6	494	53	3	56			155	
NNE5005	NNE5006	120.00			120		B	1						3	360	18	6	384	52	3	55			120	
NNE5006	NNE5009	65.00			65		B	1						3	195	10	6	211	40	2	42			65	
NNE5009	NNE5007	120.00			120		B	1						3	360	18	6	384	53	3	56			120	
NNE5007	J-4	120.00			120		B	1						3	360	18	6	384	53	3	56			120	
J-4	J-3	85.00			85		B	1						3	255	13	6	274	43	2	45	85			
J-3	NNE5008	10.00			10		B	1	3	30	2	6	38						40	2	42			10	
J-3	NNE5001	60.00			60		B	2						3	180	9	6	195	53	3	56			60	
NNE5001	NNE5000	130.00			130		B	2						3	390	20	6	416	53	3	56			130	
NNE5000	NNE5010	200.00			200		B	2						3	600	30	6	636	53	3	56			200	
J4	NNE5011	150.00			150		B	1						3	450	23	6	479	40	2	42			150	
W/ADJUSTMENT (SUM OF COLUMNS):			0	0	3135	200								1952				8086				1227	165	3170	
BID TOTAL (TO NEAREST 10):			0	0	3140	200								1960				8090				1230	170	3170	


VOLTAGE DROP CALCULATIONS

PROJECT: NORTH OAK AT 46ND CKT A-1

VOLTAGE DROP								
SL1	POLE NO. FROM (#)	POLE NO. TO (#)	CABLE LENGTH (FT)	CURRENT DRAW (AMP)	AMPxFT. x2 (AMP-FT)	VOLTAGE DROP (VOLTS)	CUMUL. VOLTAGE DROP (VOLTS)	WIRE SIZE
0.57	CONT B	J-1	50.00	5.13	513.00	0.40	0.40	8CU
9	J-1	NNE5753	100.00	5.13	1026.00	0.80	1.19	8CU
6	J-1	J-2	800.00	3.42	5472.00	4.24	5.44	8CU
5	J-2	NNE5754	40.00	2.85	228.00	0.18	5.61	8CU
4	J-2	NNE5755	150.00	2.28	684.00	0.53	6.14	8CU
3	NNE5755	NNE5756	150.00	1.71	513.00	0.40	6.54	8CU
2	NNE5756	NNE5757	150.00	1.14	342.00	0.27	6.81	8CU
1	NNE5757	NNE5758	160.00	0.57	182.40	0.14	6.95	8CU
3	NNE5758	NNE5759	140.00	1.71	478.80	0.37	7.32	8CU
1	NNE5759	NNE5760	180.00	0.00	0.00	0.00	6.95	8CU
2	NNE5760	NNE5761	130.00	1.14	296.40	0.15	7.46	8CU
1	NNE5761	NNE5762	150.00	0.57	171.00	0.08	7.55	6CU
2200.00 LONGEST RUN TOTAL DROP						7.55		
0	0.00	0.00	0.00	0.00	0.00			1CU
VOLTAGE DROP SUMMARY								
TRANSFORMER VOLTAGE						240	VOLTS	
CONTROLLER VOLTAGE						240.00	VOLTS	
END OF LONGEST CIRCUIT						232.45	VOLTS	
MAXIMUM VOLTAGE DROP						7.55	VOLTS	
MAXIMUM % VOLTAGE DRI						3.14	%	

PROJECT: NORTH OAK AT 42ND CKT B-1

VOLTAGE DROP								
SL1	POLE NO. FROM (#)	POLE NO. TO (#)	CABLE LENGTH (FT)	CURRENT DRAW (AMP)	AMPxFT. x2 (AMP-FT)	VOLTAGE DROP (VOLTS)	CUMUL. VOLTAGE DROP (VOLTS)	WIRE SIZE
0.57	CONT B	J-3	50.00	5.13	513.00	0.40	0.40	8CU
2	J-3	NNE5002	90.00	1.14	205.20	0.16	0.56	8CU
1	NNE5002	NNE5003	130.00	0.57	148.20	0.11	0.67	8CU
8	NNE5003	NNE5004	170.00	4.56	1550.40	1.20	1.87	8CU
7	NNE5004	NNE5005	155.00	3.99	1236.90	0.96	2.83	8CU
6	NNE5005	NNE5006	120.00	3.42	820.80	0.64	3.47	8CU
5	NNE5006	NNE5009	65.00	2.85	370.50	0.29	3.76	8CU
4	NNE5009	NNE5007	120.00	2.28	547.20	0.42	4.18	8CU
3	NNE5007	J-4	120.00	1.71	410.40	0.32	4.50	6CU
	J-4	J-3	85.00	0.00	0.00	0.00	4.50	6CU
	J-3	NNE5008	10.00	0.00	0.00	0.00	4.50	6CU
	J-3	NNE5001	60.00	0.00	0.00	0.00	4.50	6CU
2	NNE5001	NNE5000	130.00	1.14	296.40	0.15	4.64	6CU
1	NNE5000	NNE5010	200.00	0.57	228.00	0.11	4.76	6CU
1505.00 LONGEST RUN TOTAL DROP						4.76		
0	0.00	0.00	0.00	0.00	0.00			1CU
VOLTAGE DROP SUMMARY								
TRANSFORMER VOLTAGE						240	VOLTS	
CONTROLLER VOLTAGE						240.00	VOLTS	
END OF LONGEST CIRCUIT						235.24	VOLTS	
MAXIMUM VOLTAGE DROP						4.76	VOLTS	
MAXIMUM % VOLTAGE DRI						1.98	%	

DATE	
BY	
REVISIONS	
NO.	
 © 2023 KIMLEY-HORN AND ASSOCIATES, INC. 8900B525/STBG-3001 (007) KANSAS CITY, MO 64116 PHONE: 816.234.5500 WWW.KIMLEY-HORN.COM	
NORTH OAK TRAFFICWAY KANSAS CITY, MO, 64116	
ORIGINAL ISSUE: July 08, 2025	
FEDERAL PROJECT NO. 8900B525/STBG-3001 (007)	
SHEET NUMBER	
112 OF 171	



ASSEMBLY QUANTITY

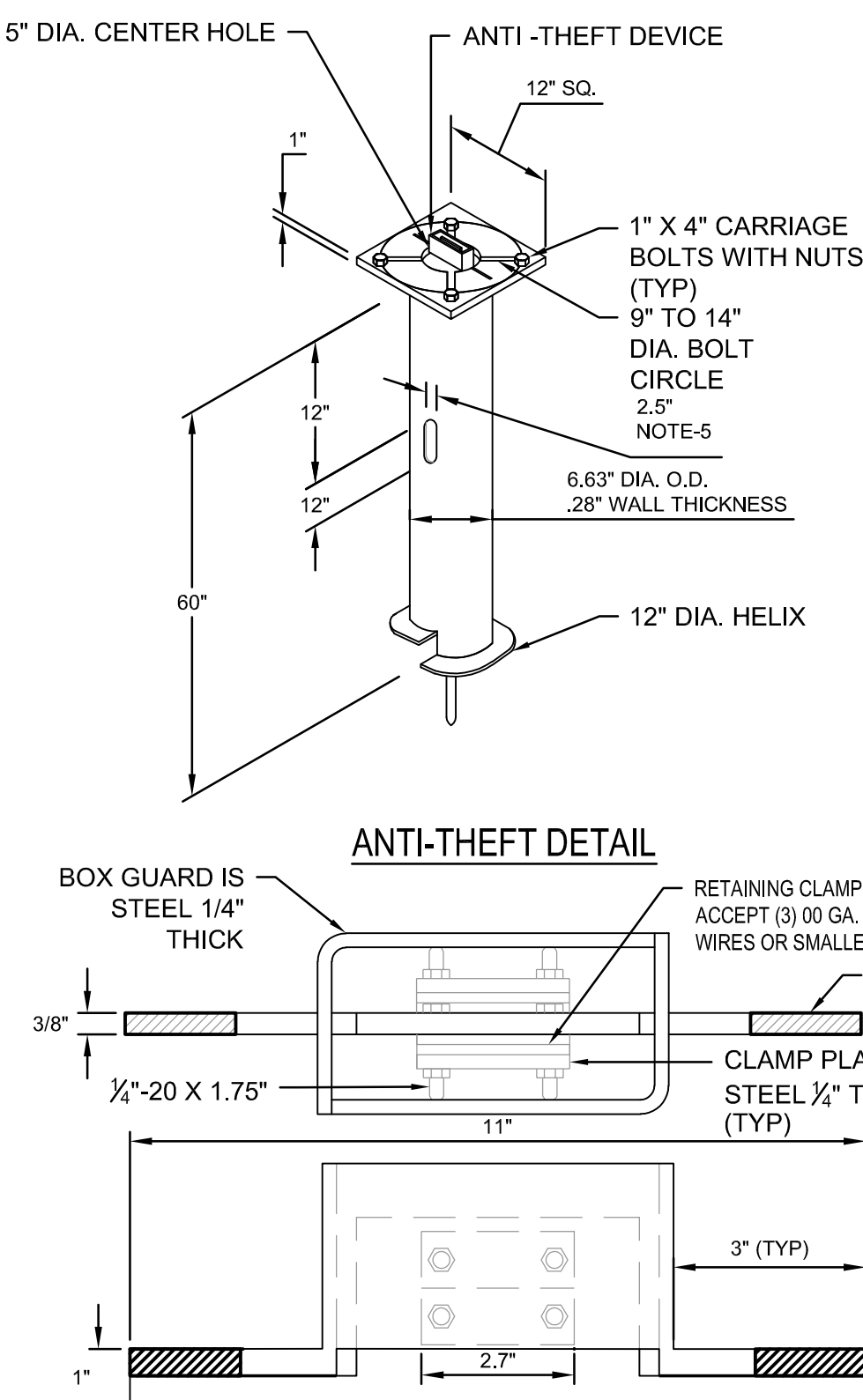
ROADWAY ASSEMBLY NUMBER RA# (RE: PLANS)	DESCRIPTION OF NEW WORK	INGRADE PULLBOX		STLT CTL	SL1 SL2 LUMINAIRE 243W COBRA LED NATURAL		SL3 LUMINAIRE 81W COBRA LED NATURAL		KC402-6 LIGHTING POLE ASSEMBLY ALUM		KC402-10 LIGHTING POLE ASSEMBLY ALUM		KC402-15 LIGHTING POLE ASSEMBLY ALUM		SH1 8" HELIX WITH CABLE RETAINER (EA)		SH2 6" HELIX WITH CABLE RETAINER (EA)		SI1 IDENTIF TAGS (EA)		SF1 FUSE HOLDERS (EA)		SG1 UNFUSED KIT FOR GND WIRE (EA)						
		ETR	NEW		2 CKT	4CKT	ETR	RELO	NEW	ETR	RELO	NEW	ETR	RELO	NEW	ETR	RELO	NEW	ETR	RELO	NEW	ETR	RELO	NEW	ETR	RELO	NEW		
NORTH OAK AT 42ND																													
NNE5753	NP																												
NNE5754	NP																												
NNE5755	NP																												
NNE5756	NP																												
NNE5757	NP																												
NNE5758	NP																												
NNE5759	NP																												
NNE5760	NP																												
NNE5761	NP																												
NNE5762	NP																												
NORTH OAK AT 46TH																													
NNE5000	NP																												
NNE5001	NP																												
NNE5002	NP																												
NNE5003	NP																												
NNE5004	NP																												
NNE5005	NP																												
NNE5006	NP																												
NNE5007	NP																												
NNE5008	NP																												
NNE5009	NP																												
NNE5010	NP																												
NNE5011	NP																												
BOX J1	NE																												
BOX J2	NE																												
BOX J3	NE																												
BOX J4	NE																												
CONT A	NE																												
CONT B	NE																												

DESCRIPTION OF NEW WORK

ETR = STREET LIGHTING EQUIPMENT THAT IS EXISTING TO REMAIN. MAINTAIN CONTINUITY OF CIRCUIT TO ALL LUMINAIRES LABELED "ETR".
 NE = NEW STREET LIGHTING EQUIPMENT. LOCATE PER NEW PLANS.
 NP = PROVIDE NEW POLE, ARM, FOUNDATION, AND LUMINAIRE. REFER TO EQUIPMENT LIST AND IMPROVEMENT SCHEDULES FOR ADDITIONAL INFORMATION.

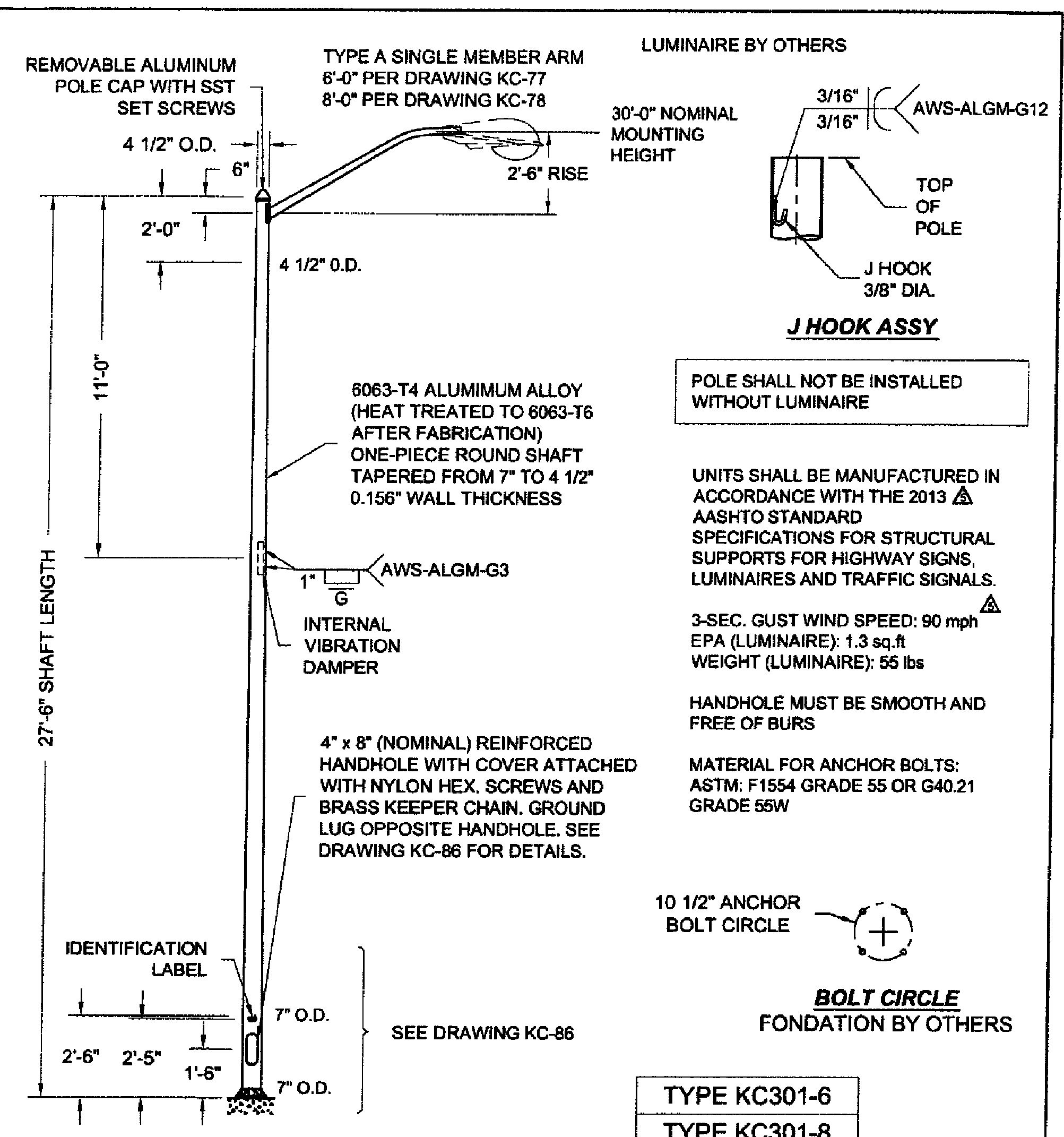
NOTES

- FINISH: HOT DIP GALVANIZE PER ASTM-A153 (LATEST REVISION).
- BASEPLATE TO BE PERPENDICULAR TO SHAFT AXIS (±1°) AND HOLE CENTERLINE CONCENTRIC (±.188) TO SHAFT AXIS.
- STENCIL MIN. 1/2 IN. LETTERS MANUFACTURER'S NUMBER AFTER GALVANIZING.
- PILOT POINT AND SHAFT AXES TO BE CONCENTRIC (±.125 FIM) AND IN LINE (±2").
- FLAME CUT TWO SLOTS IN SHAFT PERPENDICULAR TO THE BASEPLATE. PREHEAT, TUMBLEBLAST, HANDGRIND, AND CLEAN BASEPLATE, HELIX, AND PILOT POINT ON ALL WELDED AREAS.
- FLAMECUT IRREGULARITIES PERMISSIBLE: (1) VALLEYS NOT TO EXCEED 3/32 IN. BELOW NOMINAL SURFACE LEVEL, (2) PEAKS OR POSITIVE IRREGULARITIES NOT TO EXCEED 1/32 IN. ABOVE NOMINAL SURFACE LEVEL OR INTERSECTIONS OF NOMINAL SURFACES.
- MANUFACTURER TO HAVE IN EFFECT INDUSTRY RECOGNIZED WRITTEN QUALITY CONTROL FOR ALL MATERIALS AND MANUFACTURING PROCESSES.
- ALL MATERIAL IS TO BE NEW, UNUSED AND MILL TRACEABLE MEETING THE FOLLOWING SPECIFICATIONS:
 - BASEPLATE: ASTM A36-(LATEST REVISION) STRUCTURAL STEEL (CONFORM TO AASHTO TECH. BUL. #270)
 - SHAFT: ASTM A252-(LATEST REVISION) GRADE 2 STEEL PIPE PILES.
 - ALTERNATE MATERIAL: ASTM A53-(LATEST REVISION) TYPE E OR S, GRADE B, STEEL PIPE OR ASTM A500-(LATEST REVISION) GRADE B, STRUCTURAL STEEL TUBING.
 - HELIX: ASTM A635-(LATEST REVISION) 3/8" THICK HOT ROLLED STEEL PLATE OR COIL.
 - PILOT POINT: ASTM A575-(LATEST REVISION) 1-1/4" DIAMETER HOT ROLLED STEEL BAR.
 - BOLTS: CARRIAGE BOLT, 1-8UNC-24 PER ANSI B-18.5, SAE J429 GRADE-5.
 - ANTI-THEFT BOLTS: STAINLESS HEX HEAD MACHINE BOLTS, 1/4-20-UNC2A, PER ASTM A276.
 - NUTS: HEAVY HEX NUTS PER ASTM A194 GRADE 2H OR ASTM A563 GRADE DH, MEETING THE SUPPLEMENTARY REQUIREMENTS OF ASTM A563; 1-8UNC-2B PER ANSI B18.2.2.
 - ANTI-THEFT CLAMP ASSEMBLY: STEEL PER ASTM A36 STRUCTURAL STEEL.
 - RUBBER PADS: ELASTOMER PER CLASS 4 RUBBER BLANKET. MINIMUM OF 40 DUROMETER.
- BASEPLATE IS PERMANENTLY STAMPED WITH MANUFACTURER'S IDENTIFICATION "ABC" IN 1/2" LETTERS AND DATE CODE IN 1/4" LETTERS.
- BASEPLATE PERMANENTLY MARKED TO INDICATE CABLEWAY OPENING IN SHAFT.



2 6IN HELIX FOUNDATION DETAIL

SCALE: NO SCALE



valmont
 Structures Division, Valmont Industries, Inc.
 20806 Eaton Ave Farmington, Minnesota 55024-0228
 Phone: (651) 463-8900 (800) 899-7577
 Fax: (651) 463-3348

CONFIDENTIAL
 The information contained in this drawing is privileged and confidential, and may be protected from disclosure. Please be aware that any use or dissemination of this drawing may be subject to legal restriction or sanction.

TITLE: ALUM. LIGHT POLE FOR SINGLE MEMBER ARM	QTY: 1
MODEL NO.: 21-286XBS0745KC301	DWN BY: R.J.
MATERIAL: ALUMINUM ALLOY	CHKD BY:
FINISH: SATIN GROUND	APPR BY:
PROJECT: KANSAS CITY, MO	DATE: 11-04-03
SOLD TO: CUSTOMERNAME	DWG NO: KC-71
SHIP TO: SHIPPING ADDRESS	PAGE:
P.O. NO: PONYUMBER	REV: 2/24
REP: POWER EQUIPMENT	

DO NOT SCALE

1 30FT POLE WITH A 6FT ARM DETAIL

SCALE: NO SCALE

7.8.25
 1 ADDENDUM

Kimley-Horn
 © 2023 KIMLEY-HORN AND ASSOCIATES, INC.
 KANSAS CITY, MO 64110
 PHONE: 816.552.5252
 WWW.KIMLEY-HORN.COM

ELECTRICAL IMPROVEMENT SCHEDULES

NORTH OAK TRAFFICWAY
 KANSAS CITY, MO, 64116

ORIGINAL ISSUE:
 July 08, 2025

FEDERAL PROJECT NO.
 89095255TRG-3001 (007)

SHEET NUMBER
 110 OF 171

DATE
 REVISIONS

SUMMARY OF QUANTITIES

ITEM NUMBER	ITEM DESCRIPTION	NOTE	MATERIAL UNIT	PROPOSED QUANTITY
APWA	CONTROLLER LIGHTING EQUIPMENT ENCLOSURE	2CKT	EA	2
APWA	CONTROLLER PEDESTAL FOUNDATION		CY	2
260526	3/4" X 8FT COPPERWELD ROD		EA	2
APWA	UNFUSED KIT FOR GROUND WIRE		EA	22
APWA	FUSE HOLDERS		EA	44
APWA	IDENTIFICATION TAGS (LUMINAIRE POLES)		EA	22
APWA	SCREW BASE FOUNDATION WITH INTEGRAL CABLE RETAINER	SH1	EA	40
APWA	COBRAHEAD LED	SL1/SL2	EA	19
APWA	COBRAHEAD LED	SL3	EA	3
APWA	POLE 40FT VALMONT ALUMINUM	SP3506S	EA	19
APWA	POLE 30FT VALMONT ALUMINUM WITH 6FT BRACKET ARM		EA	3
APWA	10' TRUSS ARM		EA	13
APWA	15' TRUSS ARM		EA	3
260519	1 #10 1-CONDUCTOR RHH/RHW/USE COPPER	STLT CKT IN POLE	LF	1230
260519	1 #8 1-CONDUCTOR RHH/RHW/USE COPPER	STLT CKT	LF	8090
260519	1 #6 1-CONDUCTOR RHH/RHW/USE COPPER	STLT CKT	LF	1960
APWA	INGRADE JUNCTION BOX PREFORMED CLASS II		EA	4
APWA	TRENCHING AND BACKFILL		LF	3170
	BORING		LF	170
260533	1 3" PVC SCHEDULE 40 CONDUIT	SERVICE	LF	200
260533	1 2" PVC SCHEDULE 40 CONDUIT	STLT CKT	LF	3140

EQUIPMENT LIST

EQUIPMENT LIST										
SYMBOL	MANUFACTURER	MODEL #	LAMP	COLOR TEMP	WATTS	VOLTAGE	FINISH	DESCRIPTION	NOTES	
CONTROLLERS										
CONT2	MYERS PACIFIC UTILITY PRODUCTS	#MHPD-KCMO-33-120/240VAC, 1PH, 3W, 100A (2CKT CONTROLLER)	N/A	N/A		120/240V	STANDARD PAINTED FINISH FORRES GREEN	SERVICE EQUIPMENT ENCLOSURE, 120/240VAC, 1PH, 3W, 100A WITH A 10,000A SCCR RATING, 4-JAW METER SOCKET WITH 5TH CLIP, SURGE ARRESTER, TEST SWITCH, PE RECEPTACLE, BONDED AND INSULATED NEUTRAL, RAINPROOF TYPE NEMA 3R ENCLOSURE WITH ALUMINUM FINISH, TERMINAL BLOCK, (2) 30A-WP CIRCUIT BREAKERS, 15A-1P CIRCUIT BREAKER AND (2) 30A SIEMENS ELECTRICALLY HELD CONTACTORS.	REFER TO MOST CURRENT KCPL + KCMO STANDARDS AND SPECS FOR DETAILS.	
LUMINAIRES										
SL1 SL2	SIGNIFY LUMEC OR APPROVED EQUIVALENT BY AMERICAN ELECTRIC LIGHTING	#RFL-241W112LED3K-G2-R2M UNV DMG API PH9 RCD7 SP2 GY3	LED	3000K	243W	UNIVERSAL	STANDARD NATURAL GRAY FINISH	LED ROADWAY FIXTURE WITH DIE CAST ALUMINUM HOUSING AND TYPE 2 MEDIUM REFLECTOR. PROVIDE INTEGRAL LED, 0-10V DIMMABLE DRIVER WITH UNIVERSAL VOLTAGE. PROVIDE 20kV/20kA SPD, 7 PIN PHOTOCONTROL RECEPTACLE AND RECEPTACLE FOR SHORTING CAP. PROVIDE FACTORY INSTALLED, ANSI C126.15 COMPLIANT, NEMA LABEL.	REFER TO MOST CURRENT KCMO STANDARDS AND SPECIFICATIONS FOR DETAILS.	
SL3	SIGNIFY LUMEC OR APPROVED EQUIVALENT BY AMERICAN ELECTRIC LIGHTING	#RFL-80W48LED3K-G2-R2M UNV DMG API PH8 RCD7 SP2 GY3	LED	3000K	21W	UNIVERSAL	STANDARD NATURAL GRAY FINISH	LED ROADWAY FIXTURE WITH DIE CAST ALUMINUM HOUSING AND TYPE 2 MEDIUM REFLECTOR. PROVIDE INTEGRAL LED, 0-10V DIMMABLE DRIVER WITH UNIVERSAL VOLTAGE. PROVIDE 20kV/20kA SPD AND PHOTOCONTROL RECEPTACLE. PROVIDE FACTORY INSTALLED, ANSI C126.15 COMPLIANT, NEMA LABEL.	REFER TO MOST CURRENT KCMO STANDARDS AND SPECIFICATIONS FOR DETAILS.	
POLES										
40FT STREET										
KCMO-PP1	VALMONT STRUCTURES POLE ASSEMBLY	#KC402-10	N/A	N/A	N/A	N/A	STANDARD NATURAL GRAY FINISH	ROUND TAPERED ALUMINUM POLE WITH 10 FOOT TRUSS ARM PER DETAILS. POLE HEIGHT AND RISE OF ARM SHALL ALLOW FOR 40FT MOUNTING HEIGHT OF LUMINAIRE. POLE SHALL BE DESIGNED TO WITHSTAND 90MPH WINDS WITH A FIXTURE WEIGHTING UP TO 55LBS. PROVIDE VIBRATION DAMPER PER DETAILS. PROVIDE HANDHOLE LOCATION ON SIDE OF POLE THAT IS NOT ALONG CURB. PROVIDE BASE COVER THAT LAYS FLUSH WITH GRADE. REFER TO IMPROVEMENT SCHEDULES FOR LUMINAIRE TYPE FOR THIS ASSEMBLY.	REFER TO MOST CURRENT KCMO STANDARDS AND SPECIFICATIONS FOR DETAILS.	
KCMO-PP2	VALMONT STRUCTURES POLE ASSEMBLY	#KC402-15	N/A	N/A	N/A	N/A	STANDARD NATURAL GRAY FINISH	ROUND TAPERED ALUMINUM POLE WITH 15 FOOT TRUSS ARM PER DETAILS. POLE HEIGHT AND RISE OF ARM SHALL ALLOW FOR 40FT MOUNTING HEIGHT OF LUMINAIRE. POLE SHALL BE DESIGNED TO WITHSTAND 90MPH WINDS WITH A FIXTURE WEIGHTING UP TO 55LBS. PROVIDE VIBRATION DAMPER PER DETAILS. PROVIDE HANDHOLE LOCATION ON SIDE OF POLE THAT IS NOT ALONG CURB. PROVIDE BASE COVER THAT LAYS FLUSH WITH GRADE. REFER TO IMPROVEMENT SCHEDULES FOR LUMINAIRE TYPE FOR THIS ASSEMBLY.	REFER TO MOST CURRENT KCMO STANDARDS AND SPECIFICATIONS FOR DETAILS.	
KCMO-PP3	VALMONT STRUCTURES POLE ASSEMBLY	#KC402-6	N/A	N/A	N/A	N/A	STANDARD NATURAL GRAY FINISH	ROUND TAPERED ALUMINUM POLE WITH 6 FOOT BRACKET ARM PER DETAILS. POLE HEIGHT AND RISE OF ARM SHALL ALLOW FOR 30FT MOUNTING HEIGHT OF LUMINAIRE. POLE SHALL BE DESIGNED TO WITHSTAND 90MPH WINDS WITH A FIXTURE WEIGHTING UP TO 55LBS. PROVIDE VIBRATION DAMPER PER DETAILS. PROVIDE HANDHOLE LOCATION ON SIDE OF POLE THAT IS NOT ALONG CURB. PROVIDE BASE COVER THAT LAYS FLUSH WITH GRADE. REFER TO IMPROVEMENT SCHEDULES FOR LUMINAIRE TYPE FOR THIS ASSEMBLY.	REFER TO MOST CURRENT KCMO STANDARDS AND SPECIFICATIONS FOR DETAILS.	
ACCESSORIES										
SH1	HELIX = CHANCE RETAINER = CHANCE, PELCO OR APPROVED EQUIVALENT							SCREW ANCHOR, GALVANIZED STEEL STREET LIGHT STANDARD FOUNDATION WITH VARIABLE BOLT CIRCLE, 14" HELIX, 8.6"XS' SHAFT, AND INTEGRAL CABLE RETAINER. CABLE RETAINER SHALL BE COPPER CABLE ANTI-THEFT DEVICE, INTEGRAL TO HELIX FOUNDATION AND SIZED TO FIT SPECIFIED FOUNDATION PER ELECTRICAL DETAILS. COORDINATE CABLE RETAINER AND POLE BASE COVER SO THAT BASE COVER IS FLUSH ON GRADE.	REFER TO MOST CURRENT KCMO STANDARDS AND SPECIFICATIONS FOR DETAILS.	
SF1	BUSSMAN OR APPROVED EQUAL	#HEB -JW-RYC AND #HEB-JW-RLC-J (LAST POLE)						SINGLE-POLE, SET SCREW, IN-LINE BREAKAWAY FUSE HOLDERS. FOR THE (2) "HOT" BREAKAWAY CONDUCTORS, PLACE A 10 AMP KTK FUSE IN EACH BREAKAWAY FUSEHOLDER.		
SG1	BUSSMAN OR APPROVED EQUAL	#HEB -JW-RYC AND #HEB-JW-RLC-J (LAST POLE)						SINGLE-POLE, SET SCREW, IN-LINE BREAKAWAY FUSE HOLDERS. PLACE A NNB COPPER SLUG IN THE SYSTEM GROUND FUSEHOLDER.		

CONTROLLER SCHEDULE

NAME	CONTROLLER A	POWER SUPPLY DISCONNECT						
		CABINET	CONTROL BREAKER	MAIN BREAKER	METER	SERVICE POLE BY UTILITY	LIGHTING BREAKER	CIRCUIT LOAD
LOCATION	NORTH OAK AT 42ND							
TYPE	NEW							
CIRCUIT	NEW LABEL	VOLTAGE	BREAKER		COMPANY	BREAKER	LOAD	
A	NNE9752	240, 1P	15A	100A, 2P	NO	EXISTING	4-CKT	(MAX. 3840EA)
A-1	STREETLIGHTS						30A, 2P	2430
A-2	SPARE						30A, 2P	0
							TOTAL (VA)	2430
							TOTAL (A)	10.1

NAME	CONTROLLER B	POWER SUPPLY DISCONNECT						
		CABINET	CONTROL BREAKER	MAIN BREAKER	METER	SERVICE POLE BY UTILITY	LIGHTING BREAKER	CIRCUIT LOAD
LOCATION	NORTH OAK AT 46TH							
TYPE	NEW							
CIRCUIT	NEW LABEL	VOLTAGE	BREAKER		COMPANY	BREAKER	LOAD	
B	NNE9000	240, 1P	15A	100A, 2P	NO	EXISTING	4-CKT	(MAX. 3840EA)
B-1	STREETLIGHTS						30A, 2P	2430
B-2	SPARE						30A, 2P	0
							TOTAL (VA)	2430
							TOTAL (A)	10.1

GENERAL NOTES:
 A. MANUFACTURER TO PROVIDE PROJECT SPECIFIC SHOP DRAWINGS SHOWING EXACT MOUNTING, FINISH, LENGTH, SHAPE AND LAMPING OF EACH STREETLIGHTING ASSEMBLY.

7.8.25

1 ADDENDUM

1

DATE

REVISIONS

Kimley-Horn
 © 2025 KIMLEY-HORN AND ASSOCIATES, INC.
 1000 N. GARDNER AVENUE, SUITE 100
 KANSAS CITY, MO 64105
 PHONE: 816.524.4000
 WWW.KIMLEY-HORN.COM

ELECTRICAL IMPROVEMENT SCHEDULES

NORTH OAK TRAFFICWAY
 KANSAS CITY, MO, 64116

ORIGINAL ISSUE:
 July 08, 2025

FEDERAL PROJECT NO.
 89008525/STBG-3001 (007)

SHEET NUMBER

111 OF 171

LIGHTWORKS INC.
 DESIGN+ENGINEERING