

FORWARD 44 PURPOSE AND NEED STUDY

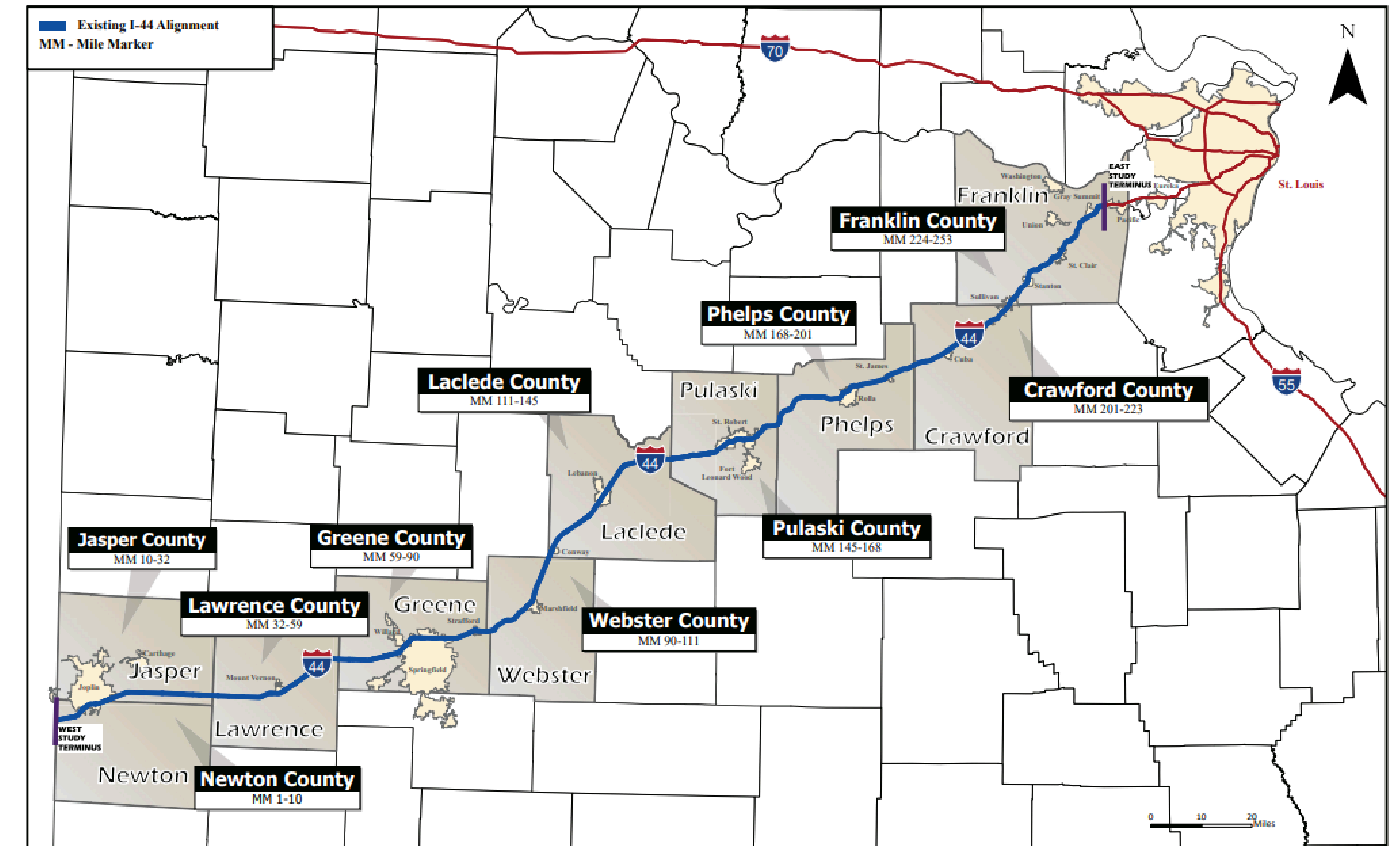
WHAT WAS THE FORWARD 44 PURPOSE & NEED STUDY?

The Forward 44 Purpose & Need Study was an effort to provide an updated comprehensive review of the 2008 I-44 Statewide Purpose & Need Study and provided the opportunity for input from stakeholders and the public along the I-44 corridor. The study was a critical step to preparing for future projects on I-44, and was necessary to define this project in Southwest Missouri.

THE SIX PURPOSE AND NEED ELEMENTS ARE:

- Roadway capacity is inadequate for expected demand
- Interchanges and portions of mainline have safety and operation issues and are inconsistent with current design standards
- Freight traffic is an essential element of traffic on I-44
- Engineering standards have evolved resulting in inconsistent roadway design
- Balance access, economic development and human/natural resources
- Preserve the existing facility as needed to carry existing and future traffic

STUDY AREA



STUDY TIMELINE

Summer to Fall 2024

2024

- Public Meetings
- Quarterly Stakeholder Meetings
- Data Gathering and Analysis
- Draft Purpose & Need Study

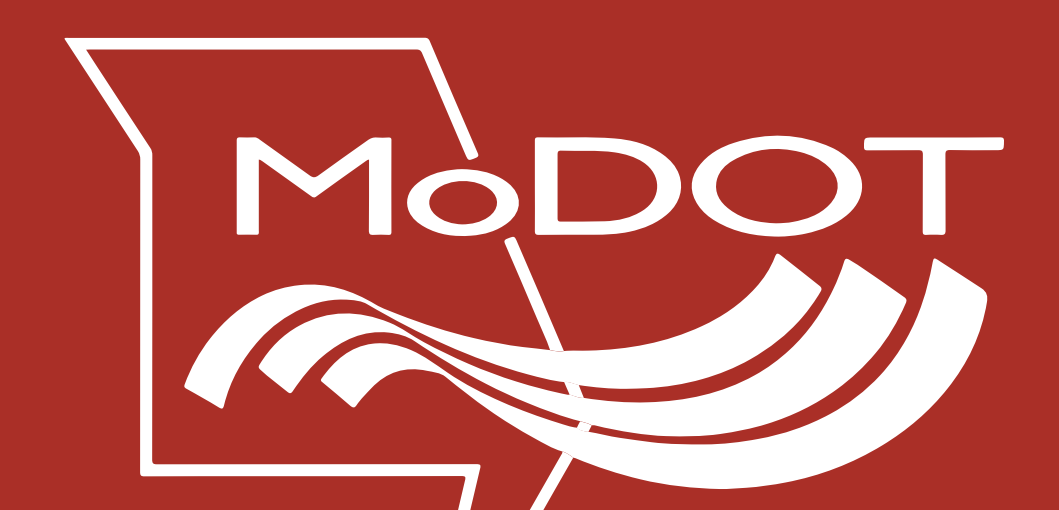
Late 2024 to Early 2025

2025

- Final Purpose & Need Document



Scan here to download the Forward 44 Purpose & Need Study.



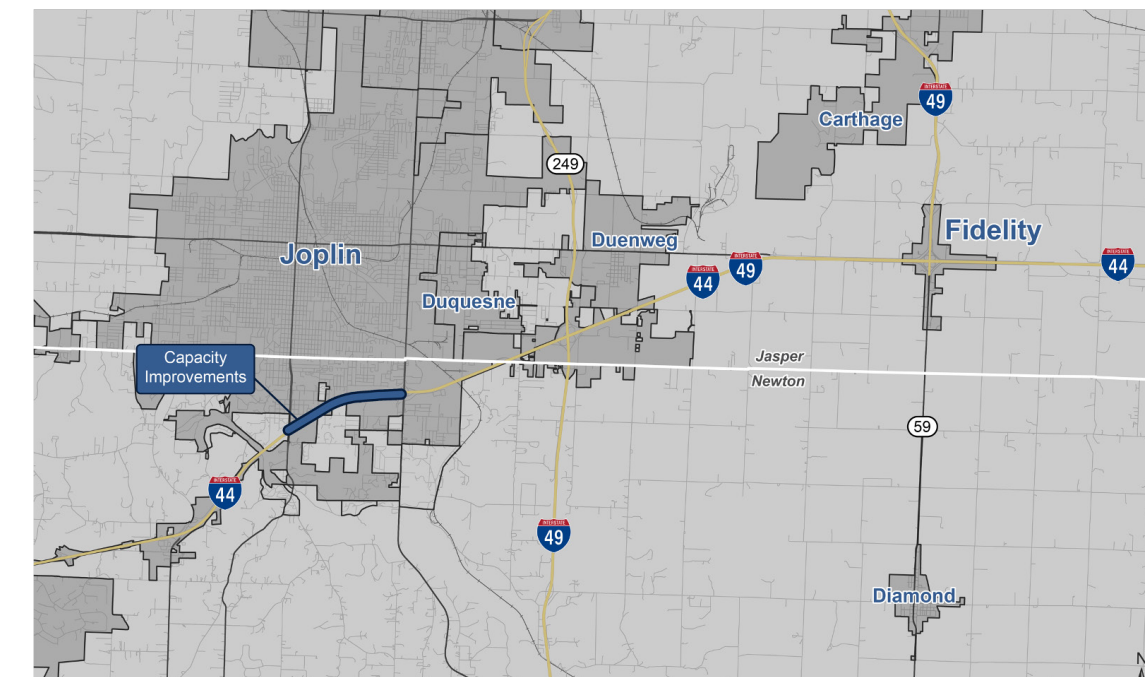
FORWARD 44: SOUTHWEST I-44 IMPROVEMENTS PROJECT MAP



FORWARD 44: SOUTHWEST I-44 IMPROVEMENTS PROJECT

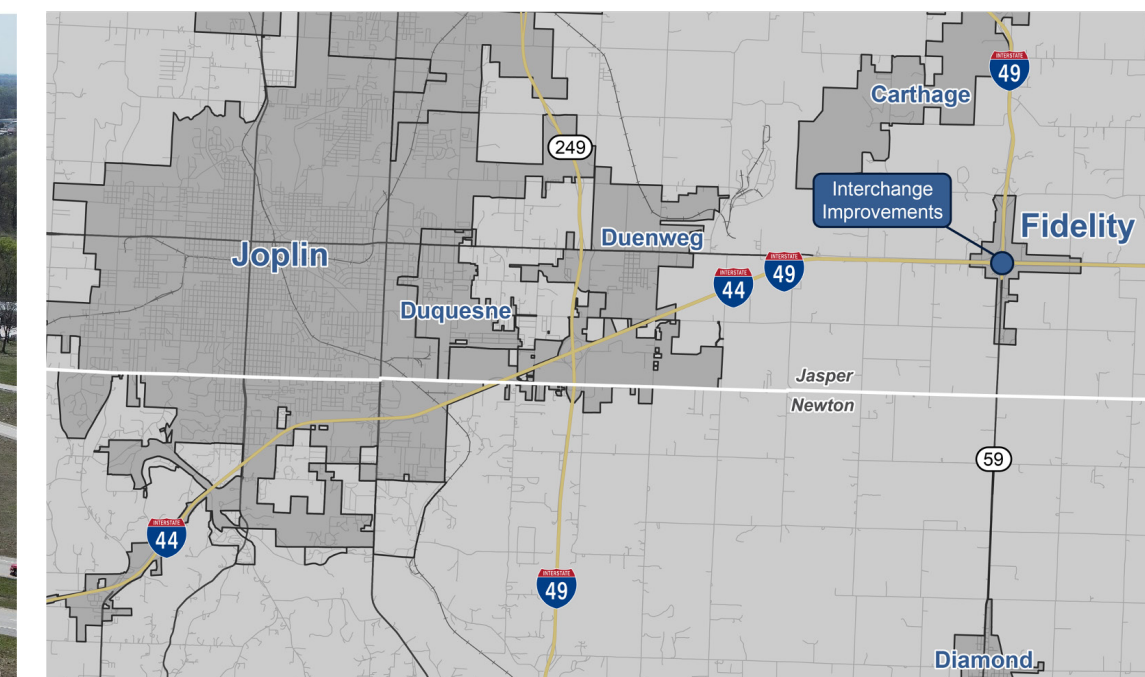
MAIN STREET TO RANGELINE ROAD

2.2 Miles Capacity Improvements



I-49N INTERCHANGE (FIDELITY)

Interchange Improvements



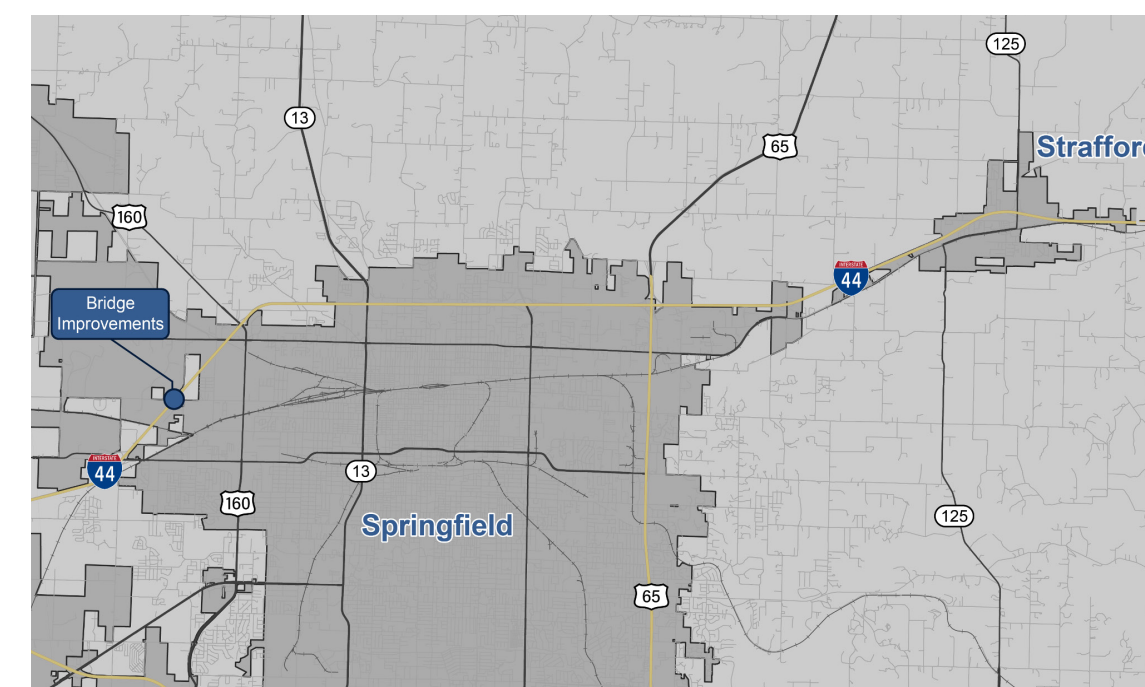
LAWRENCE COUNTY

4.5 Miles Pavement Improvements



ROUTE EE (DIVISION STREET)

Bridge Rehabilitation



GREENE COUNTY: US-160 TO MO-125

9.5 Miles Capacity Improvements



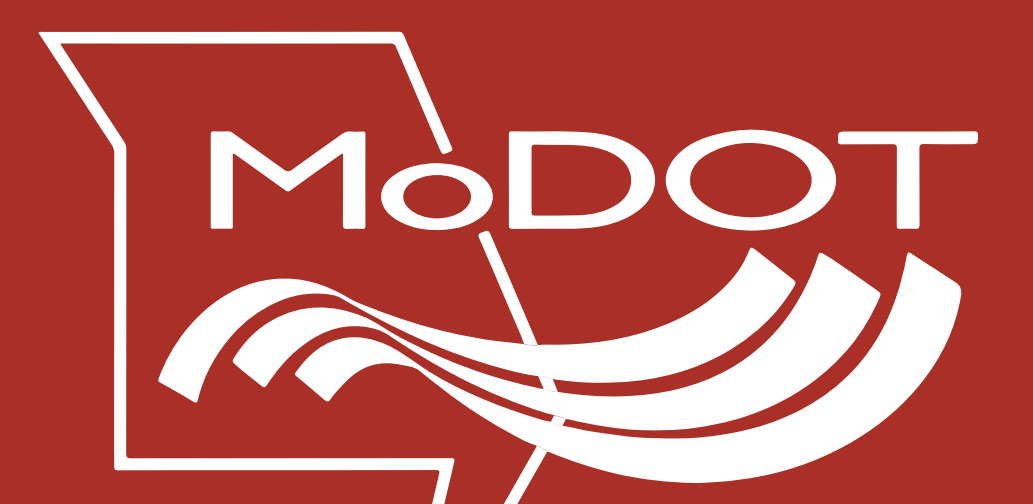
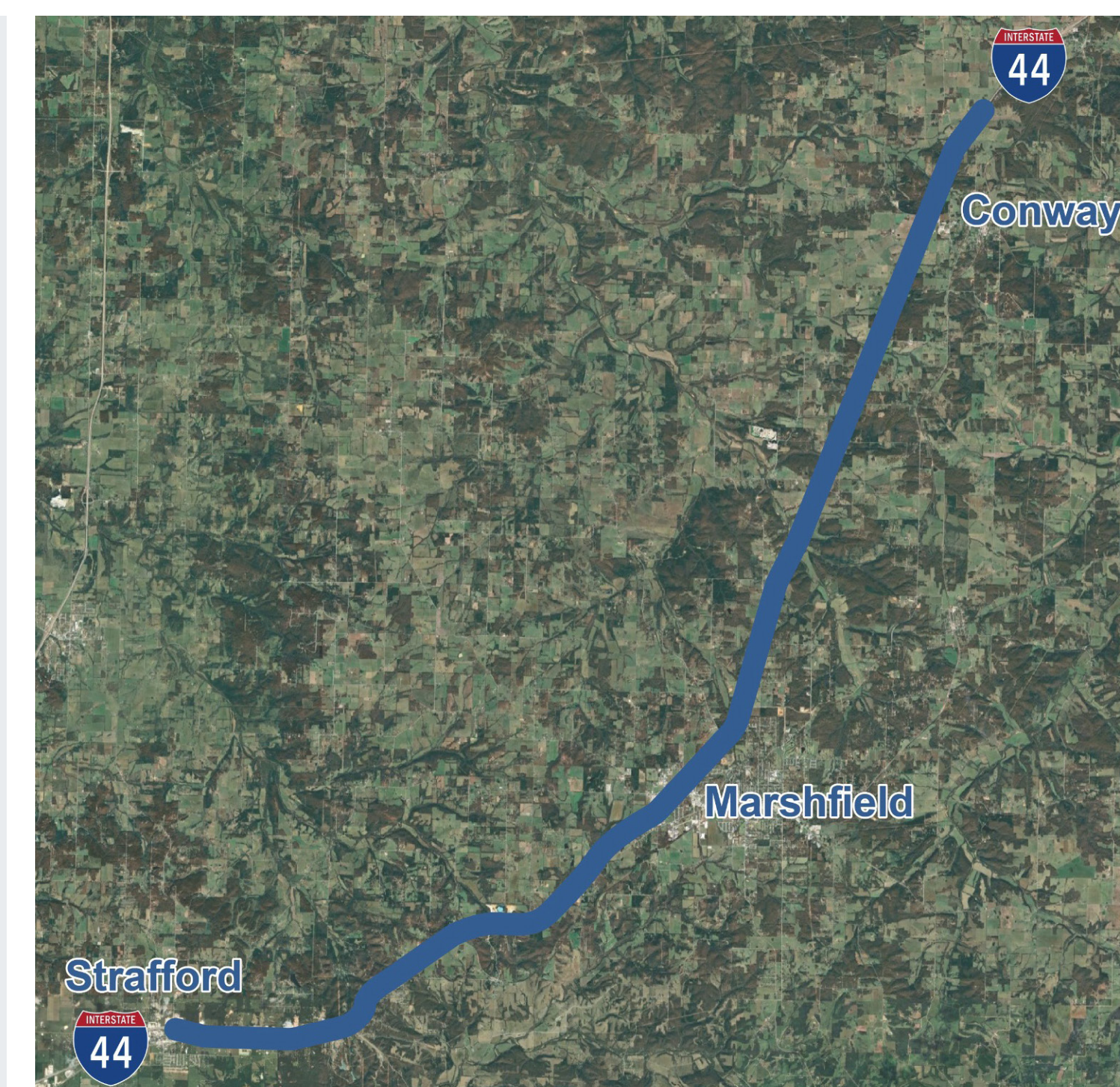
ROUTE 13 INTERCHANGE (KS EXPRESSWAY)

Interchange Improvements



GREENE, WEBSTER, LACLEDE COUNTIES

- Pavement Rebuild
- Pavement Resurfacing
- Curve Realignment
- Ramp Extensions



FORWARD 44: SOUTHWEST I-44 IMPROVEMENTS PROJECT GOALS

1



Deliver the project within the budget of \$472 million

2



Maximize safety and mobility with innovative improvements that reduce crashes, promote economic development, and growth

3



Construct a durable transportation facility that is compatible with freight movement and future expansion

4

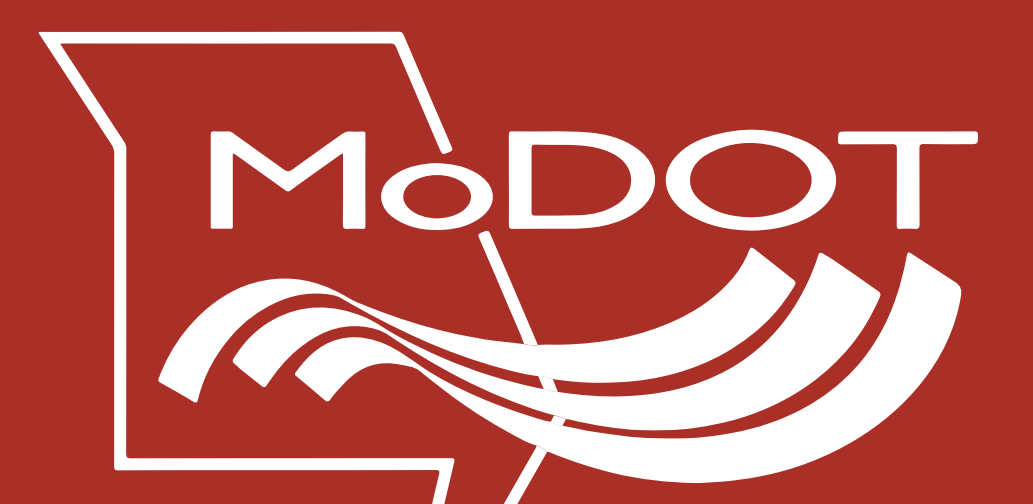


Minimize and mitigate delays to the traveling public while ensuring the highest level of safety for both workers and the public

5



Deliver the project by the end of 2031



SUCCESSFUL DESIGN-BUILD PROJECTS BY MODOT

MoDOT Mission Statement: Our mission is to provide a world-class transportation system that is safe, innovative, reliable and dedicated to a prosperous Missouri.

SAFETY

- Moving Missourians Safely and Doing So Safely at MoDOT

SERVICE

- Providing Outstanding Customer Service
- Delivering Efficient and Innovative Transportation Projects
- Operating a Reliable Transportation System

STABILITY

- Managing our Assets
- Stabilizing Resources and Engaging our Workforce
- Building a Prosperous Economy for All Missourians

22

PROJECTS COMPLETED

175

MONTHS AHEAD OF SCHEDULE

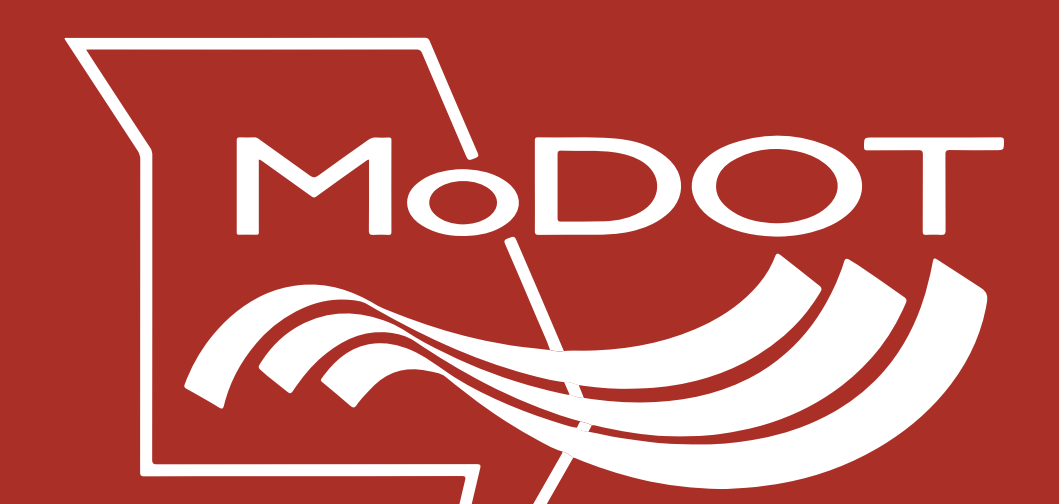


\$2.5B

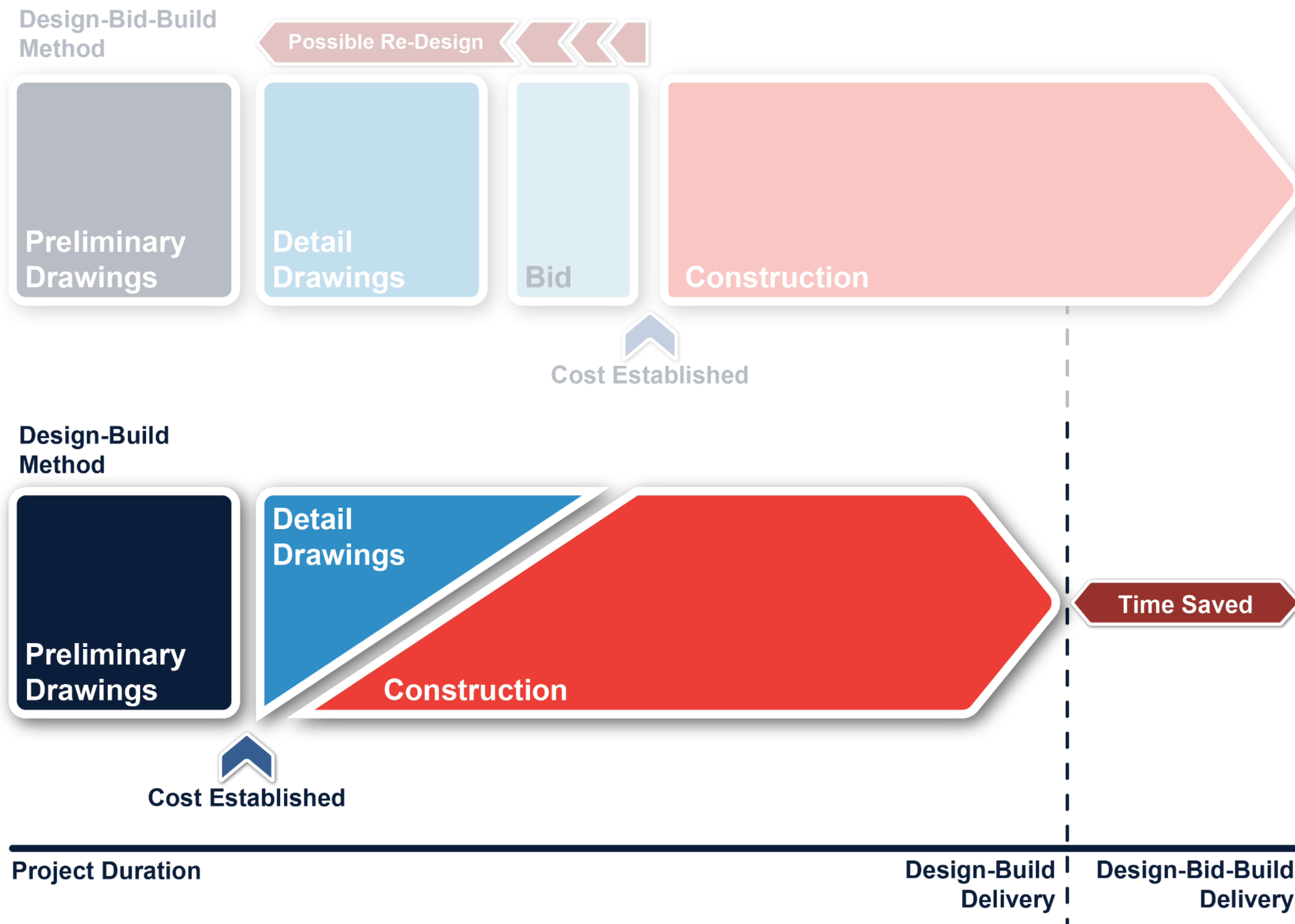
TOTAL VALUE OF PROJECTS

\$488M

UNDER BUDGET



ADVANTAGES OF THE DESIGN-BUILD APPROACH



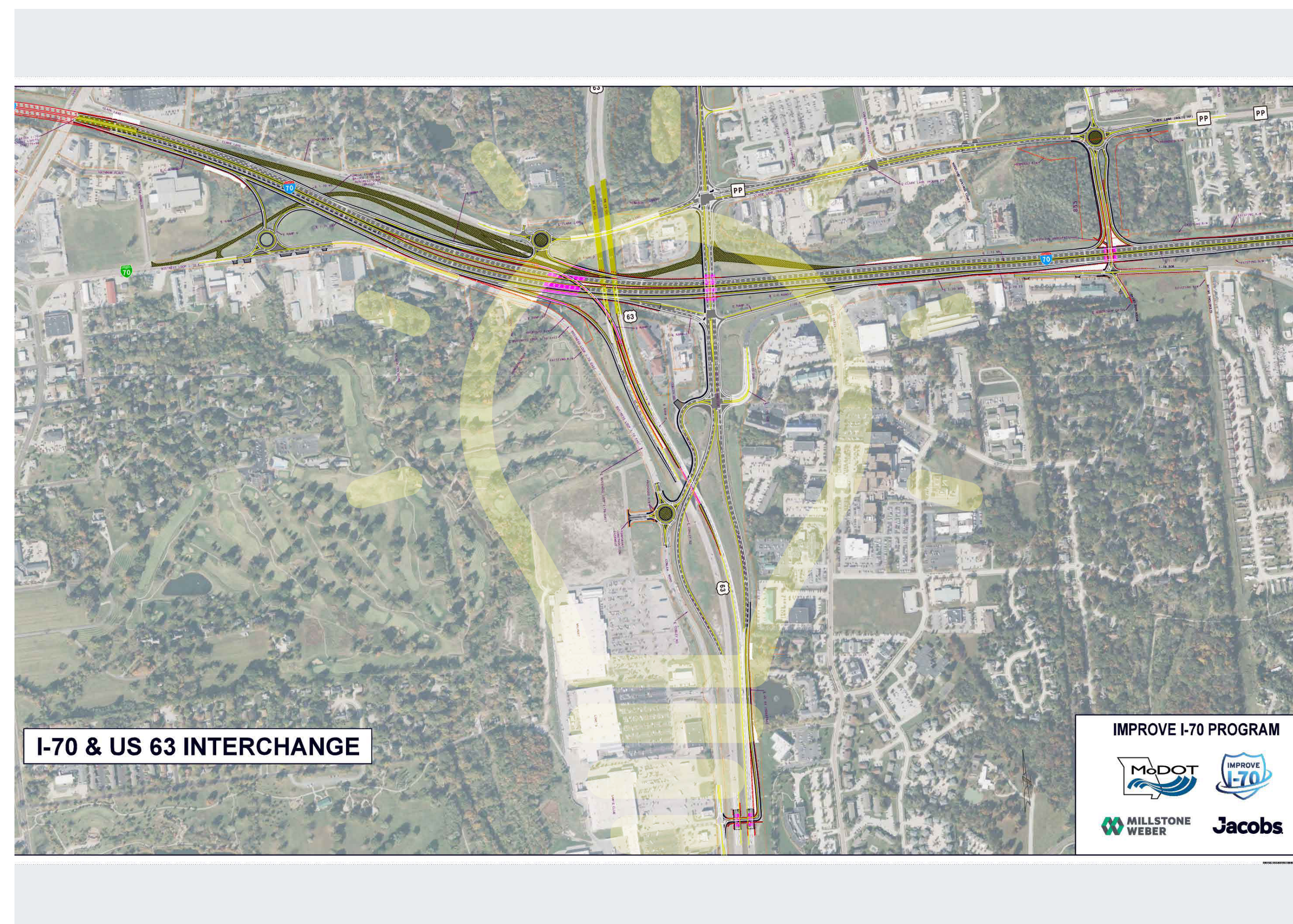
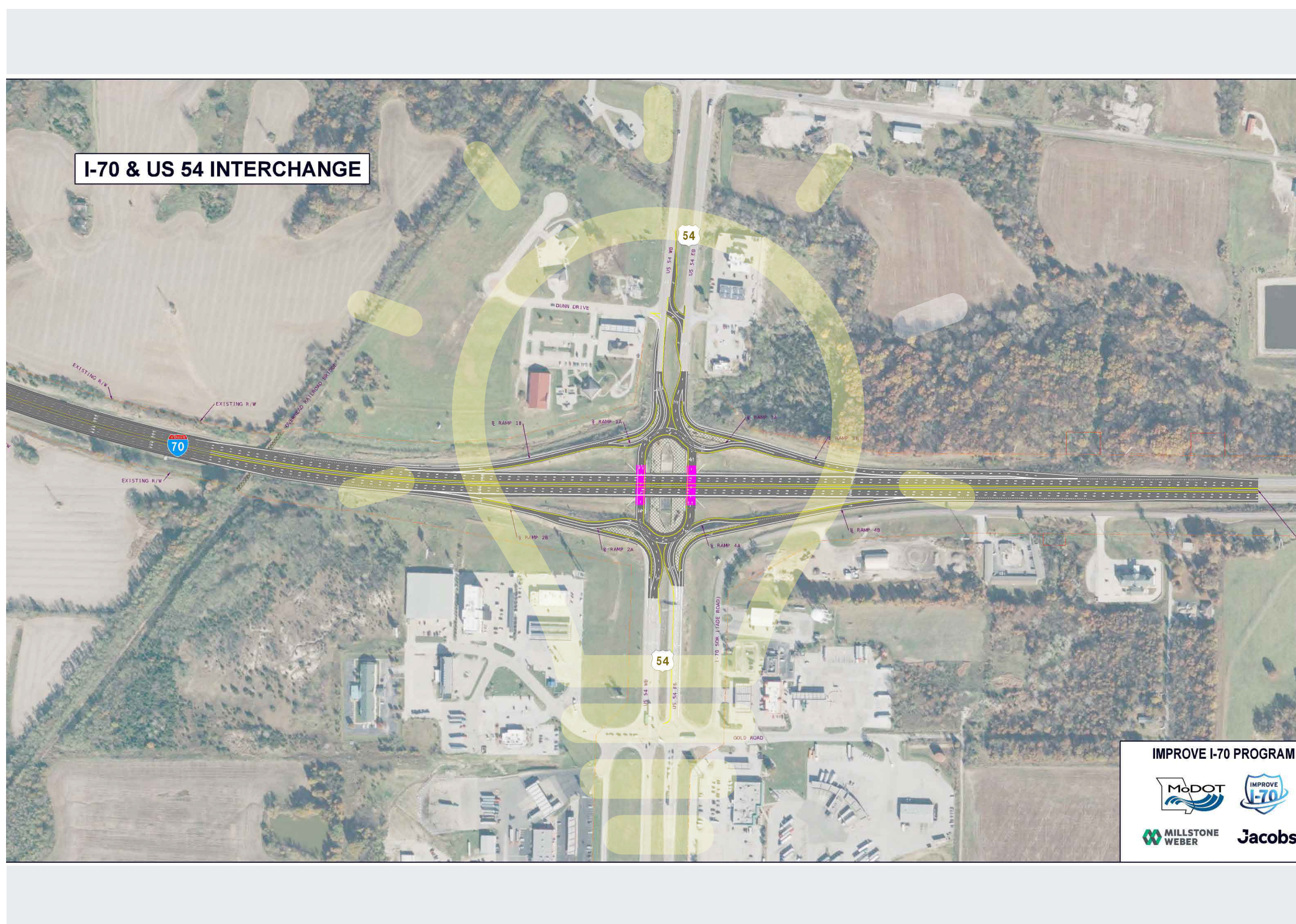
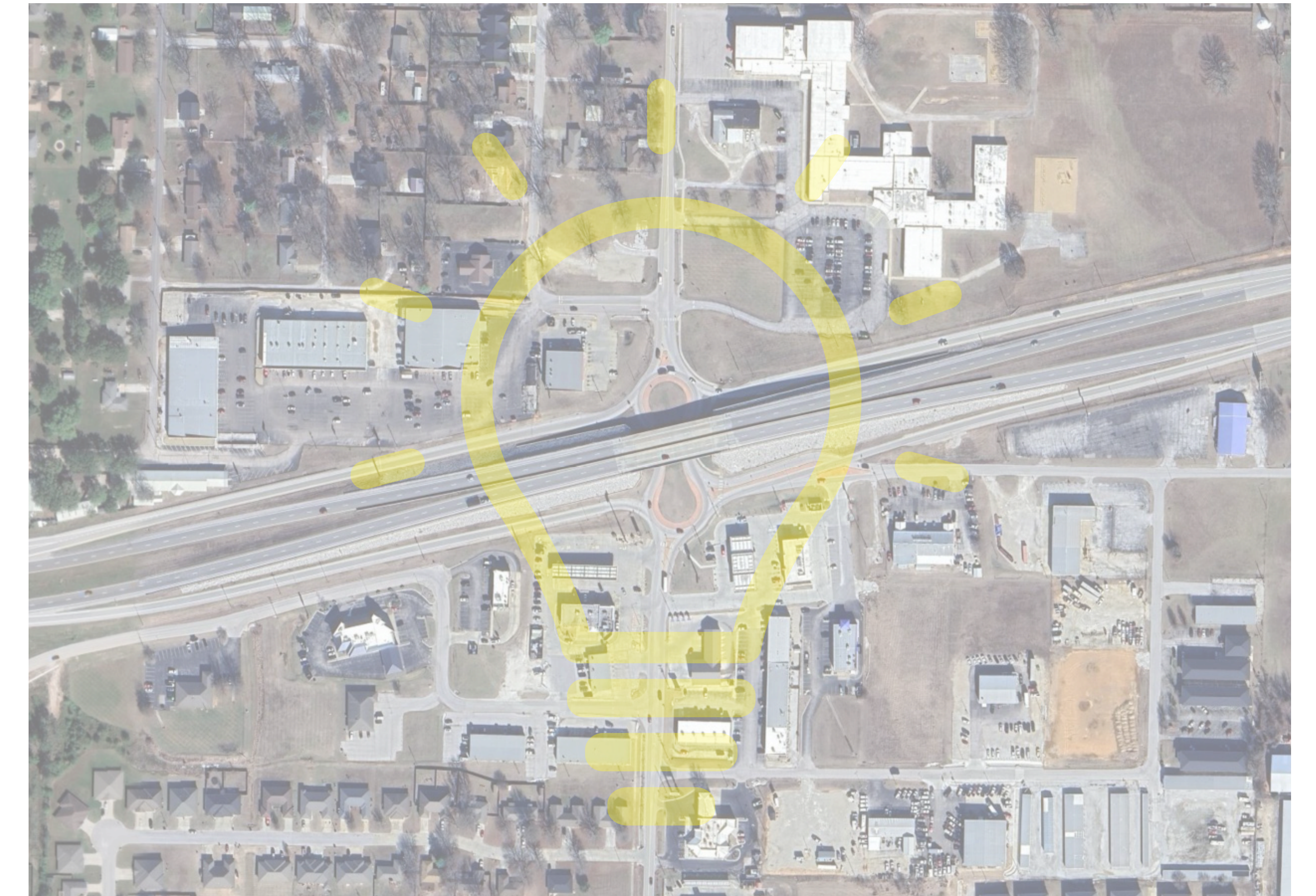
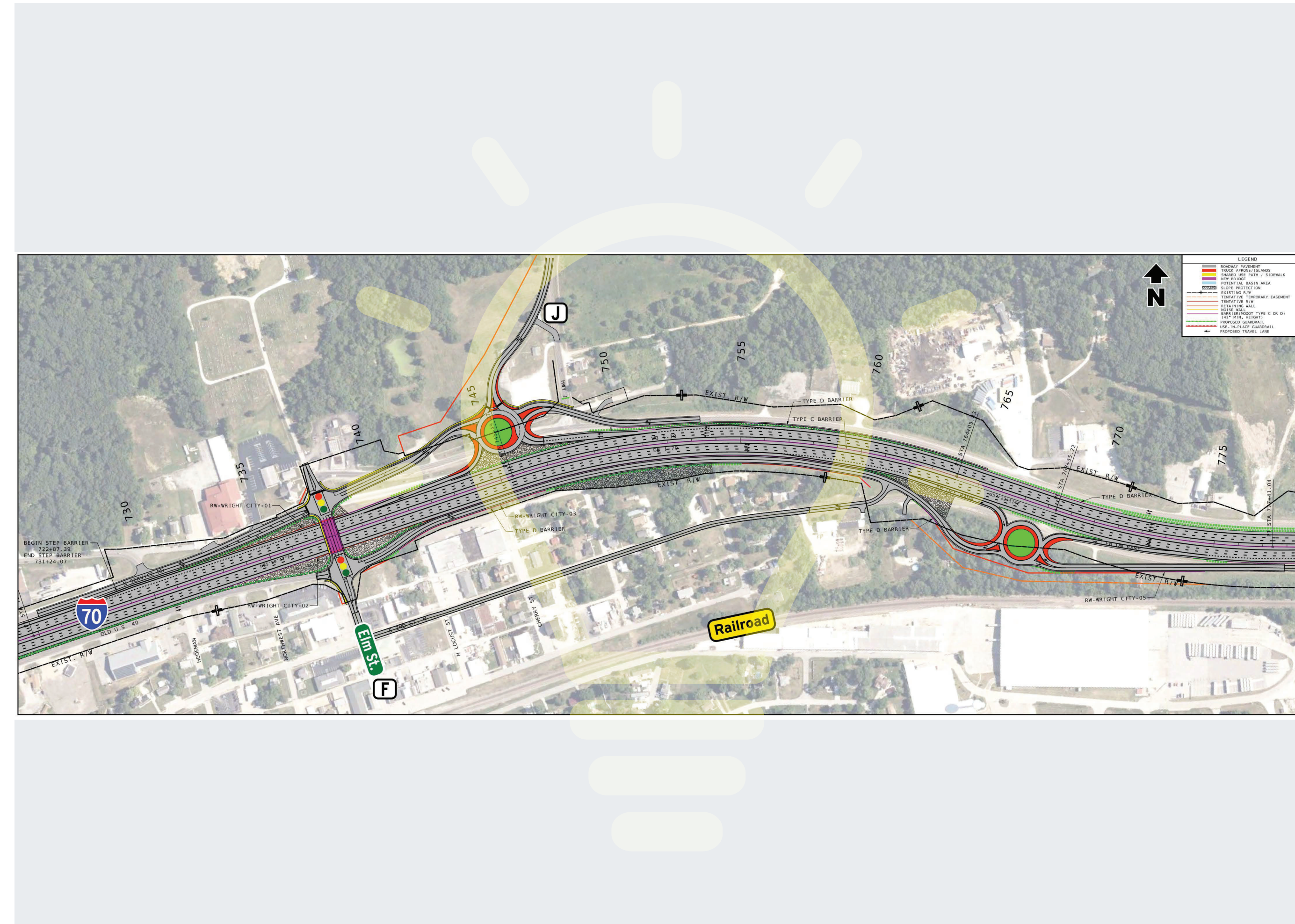
DESIGN-BUILD SCHEDULE ADVANTAGE

- Earlier project completion
- Cost established early
- Concurrent design and construction

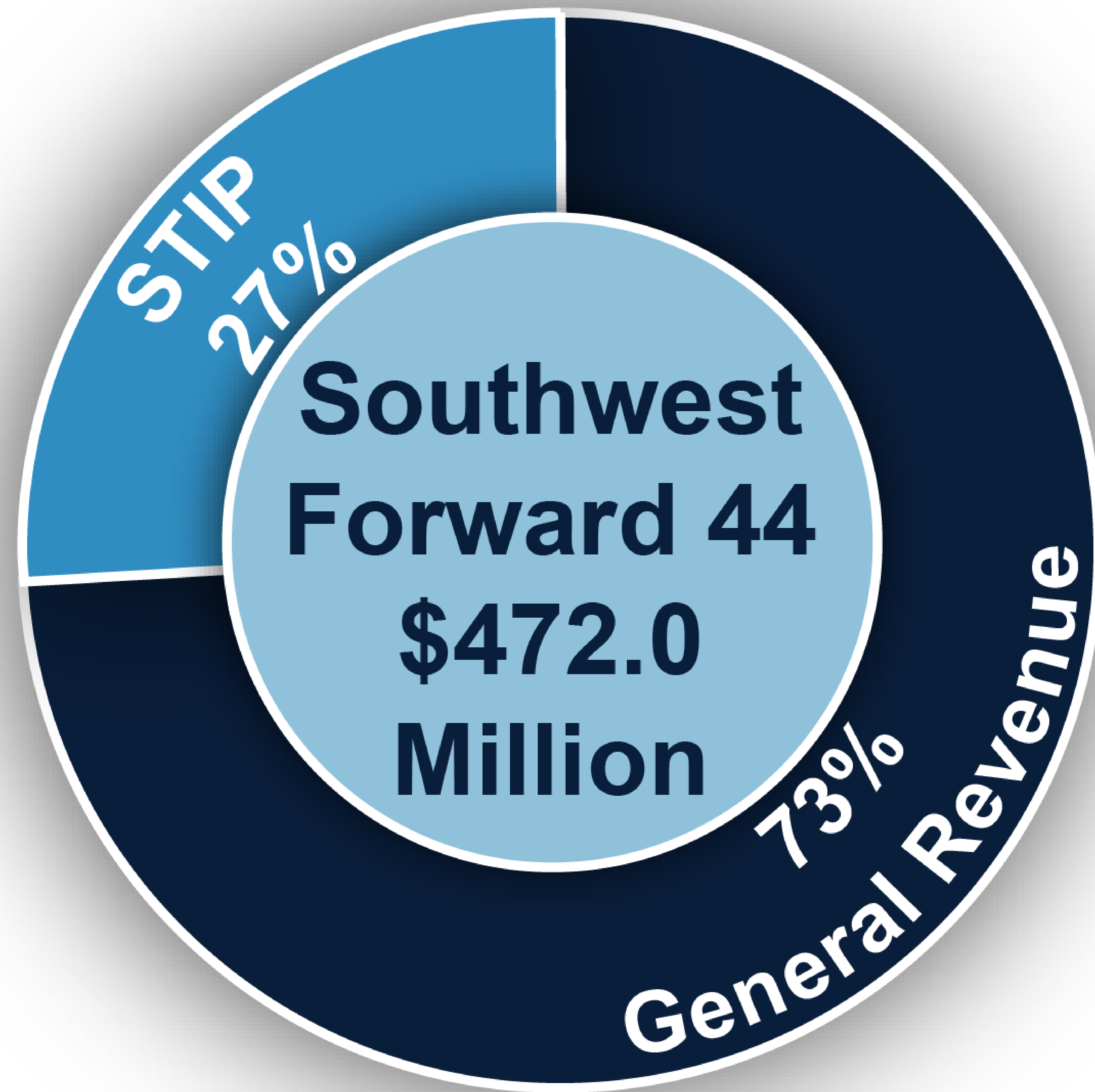
DESIGN-BUILD INNOVATION

- Shortlist well-qualified teams
- Highly competitive proposal development
- Focus on goals and outcomes
- Promote innovation and efficiencies
- Maximize scope within the fixed budget
- Solutions developed by design-builder

EXAMPLES OF DESIGN-BUILD INNOVATION



INVESTING IN YOUR FUTURE

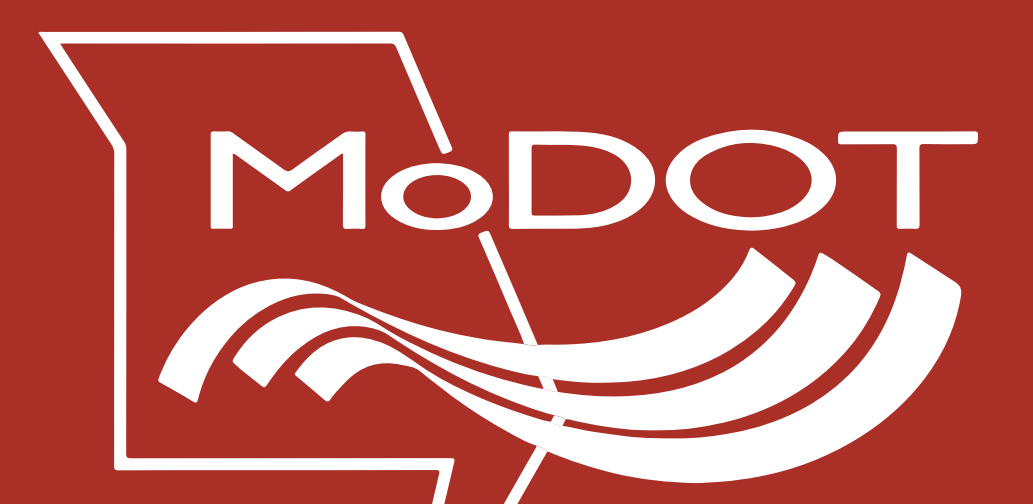


WHAT IS STIP FUNDING?

State and federal transportation revenues are distributed by formula to MoDOT districts around the state for capital projects. The projects, selected in coordination with regional planning partner agencies, are included in the annual Statewide Transportation Improvement Program (STIP).

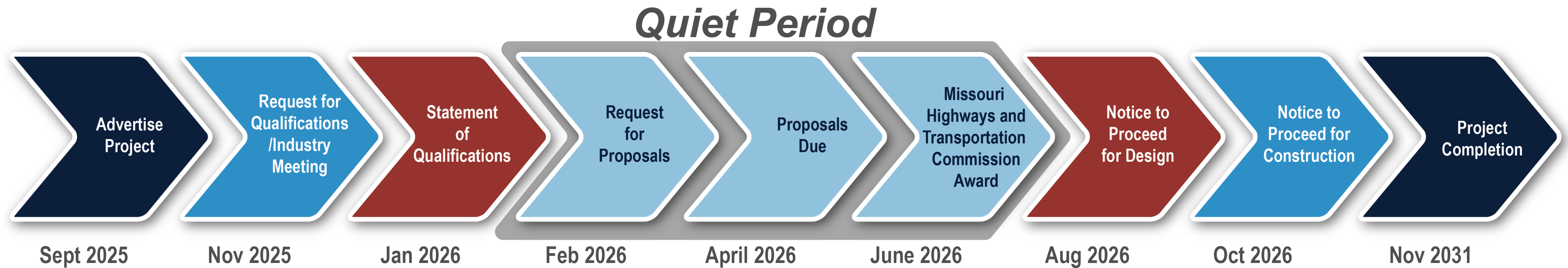
WHAT IS GENERAL REVENUE FUNDING?

General Revenue Funds are the primary operating funds of the State of Missouri, collecting broad-based taxes not dedicated to a specific purpose. These funds primarily originate from state income taxes, state sales and use taxes, and various other fees and licenses. They are used to support a wide range of state services, including transportation projects, ensuring the state's ability to address diverse needs.



FORWARD 44 TOGETHER

PROJECT SCHEDULE



WHAT HAPPENS NEXT?

Design-build teams will develop and submit their best value proposals for the project. MoDOT will select the best value proposal in Spring 2026. The winning proposal will be displayed on the project website. During a Fall 2026 public meeting, MoDOT will share proposal details, construction impacts and answer your questions.

THANK YOU FOR BEING PART OF THIS PROCESS!

MODOT CONTACT INFORMATION

KRISTI BACHMAN

Forward 44 SW
Project Director

BETH SCHALLER

Area Engineer
SW District



Scan here to learn more about the project.

MODOT | SOUTHWEST DISTRICT

3025 East Kearney St., Springfield, MO 65803

(888) 275-6636 | swforward44@modot.mo.gov

