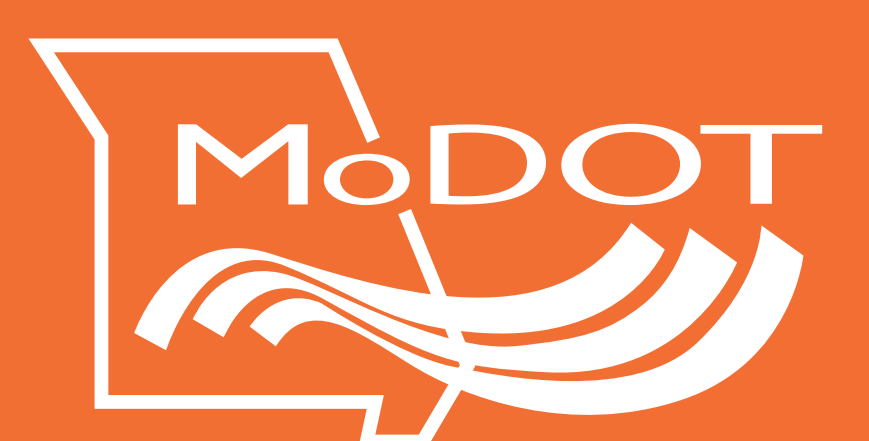
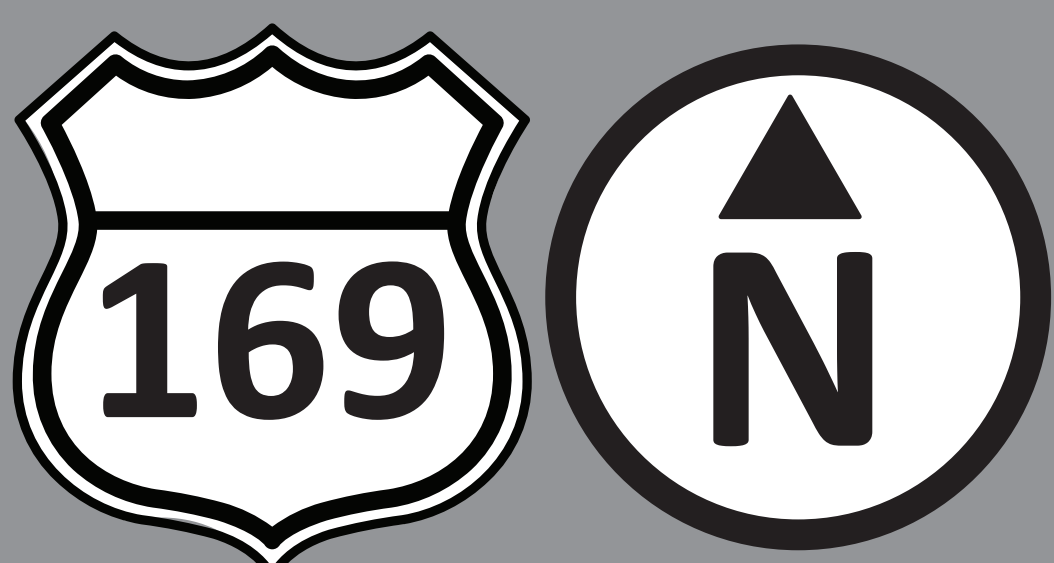
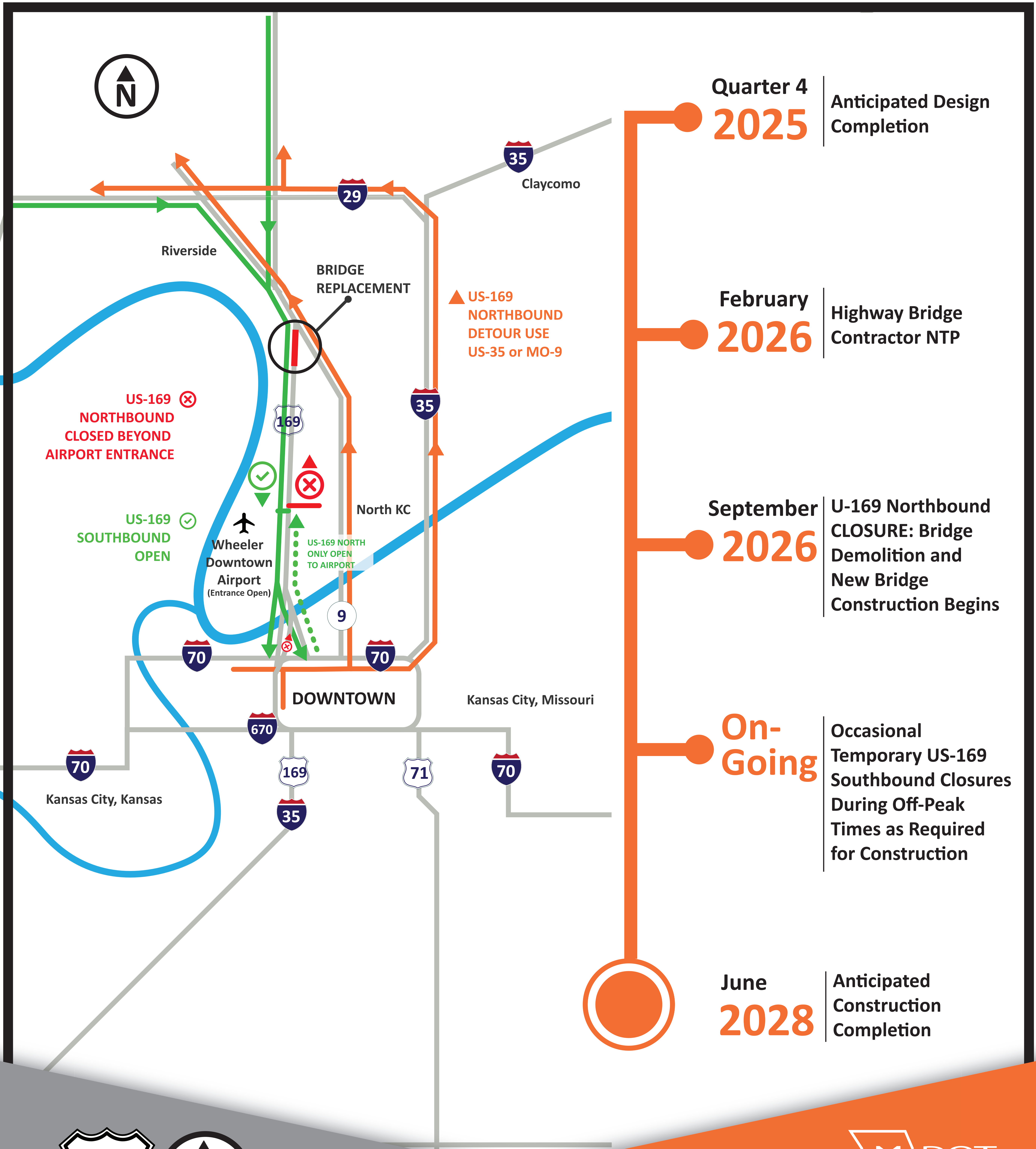
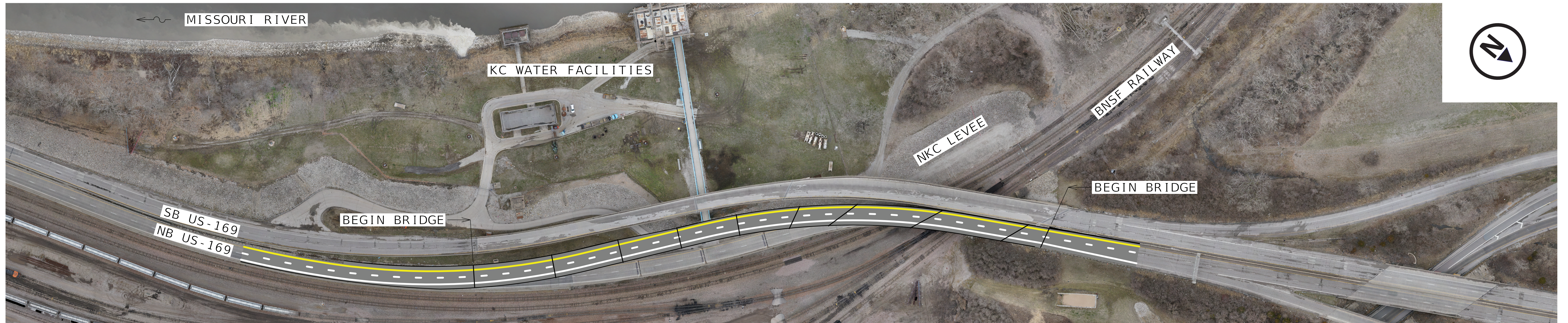


US-169 Northbound

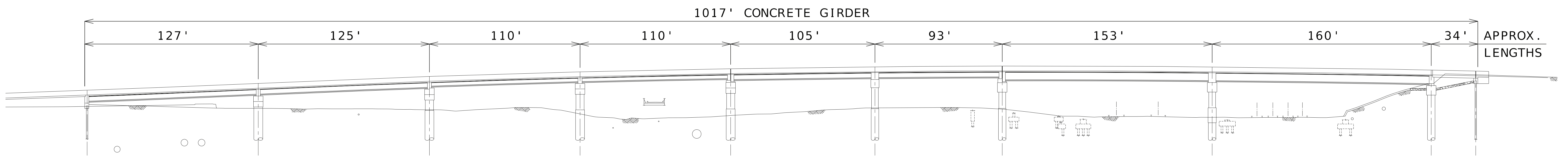
DETOURS & TIMELINE



US-169 Bridge Replacement CLAY COUNTY, MISSOURI

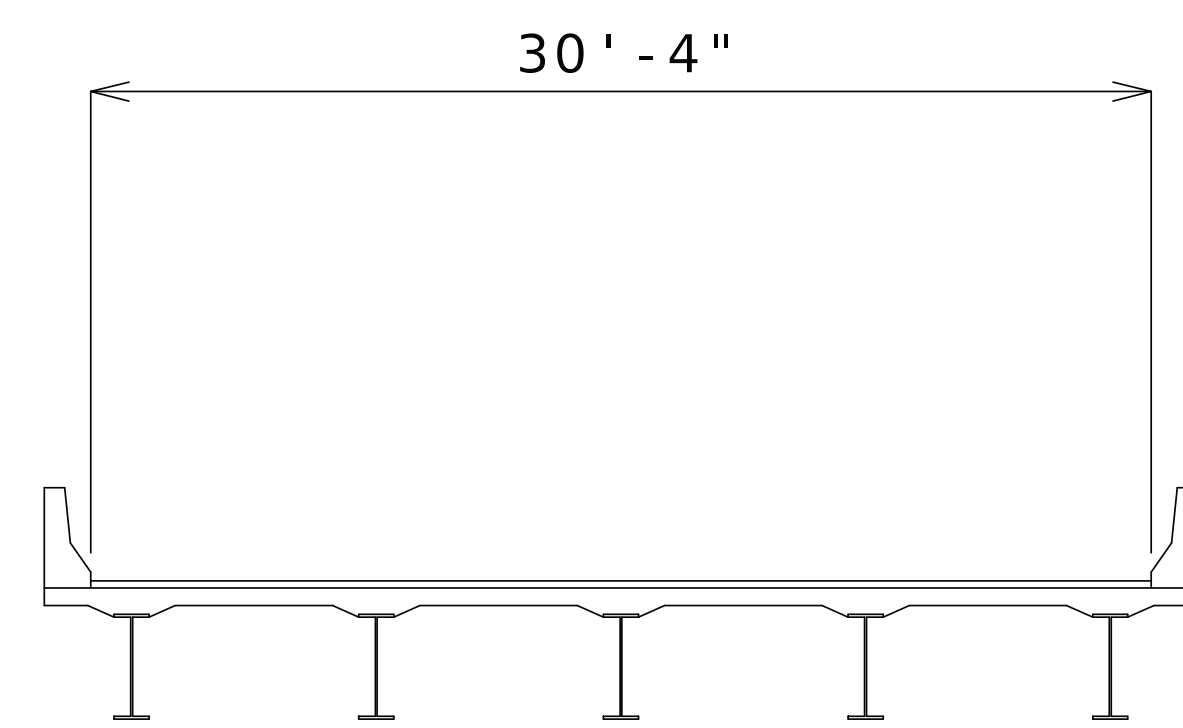


PLAN

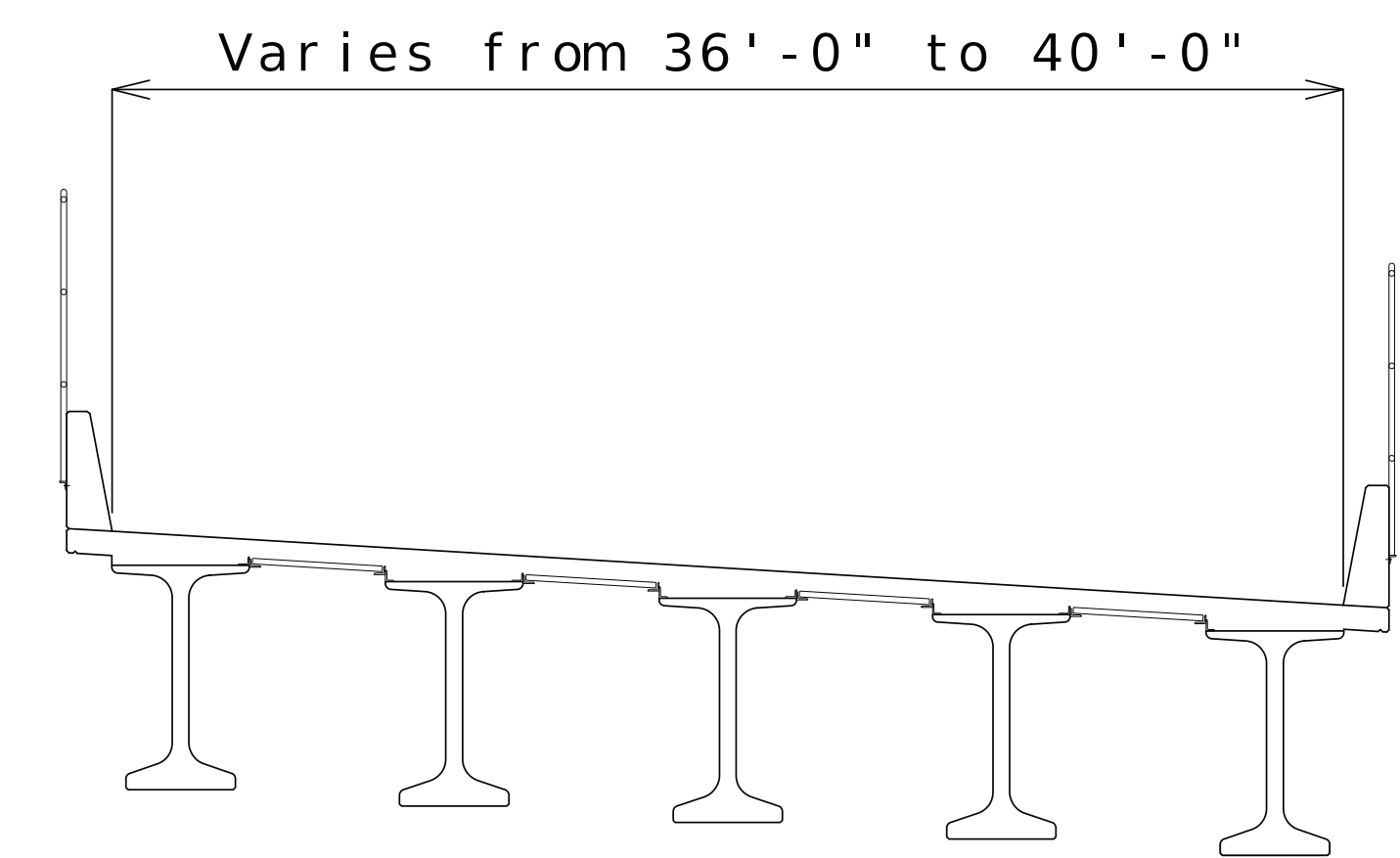


ELEVATION

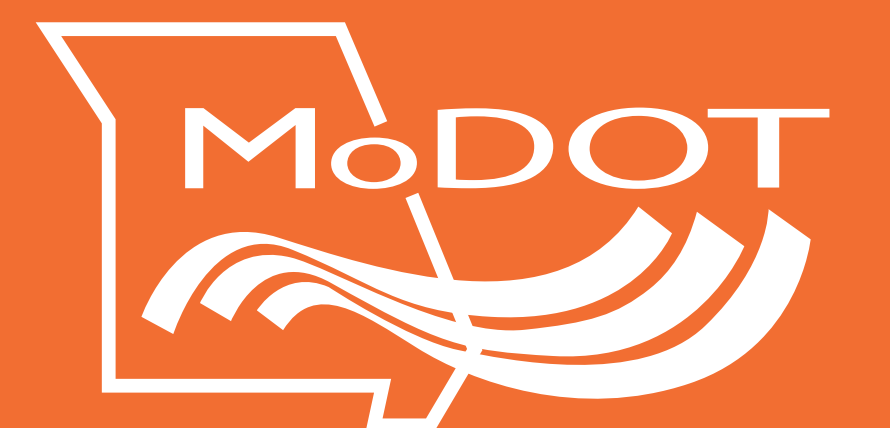
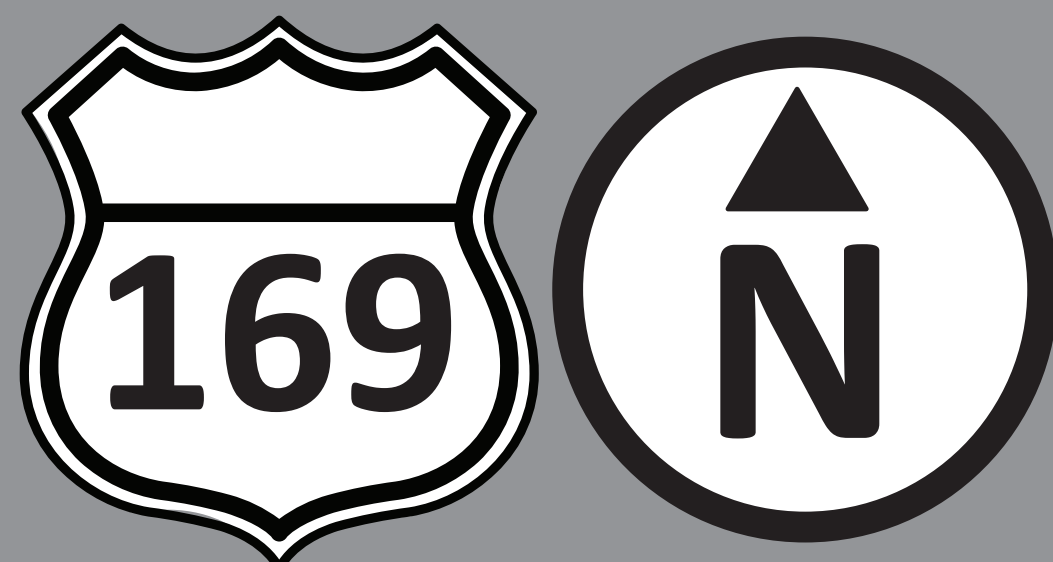
- Northbound US-169 Closed for 18-24 Months
- Construction Cost - \$17 to \$19 Million
- Temporary Southbound US-169 Closures for Construction



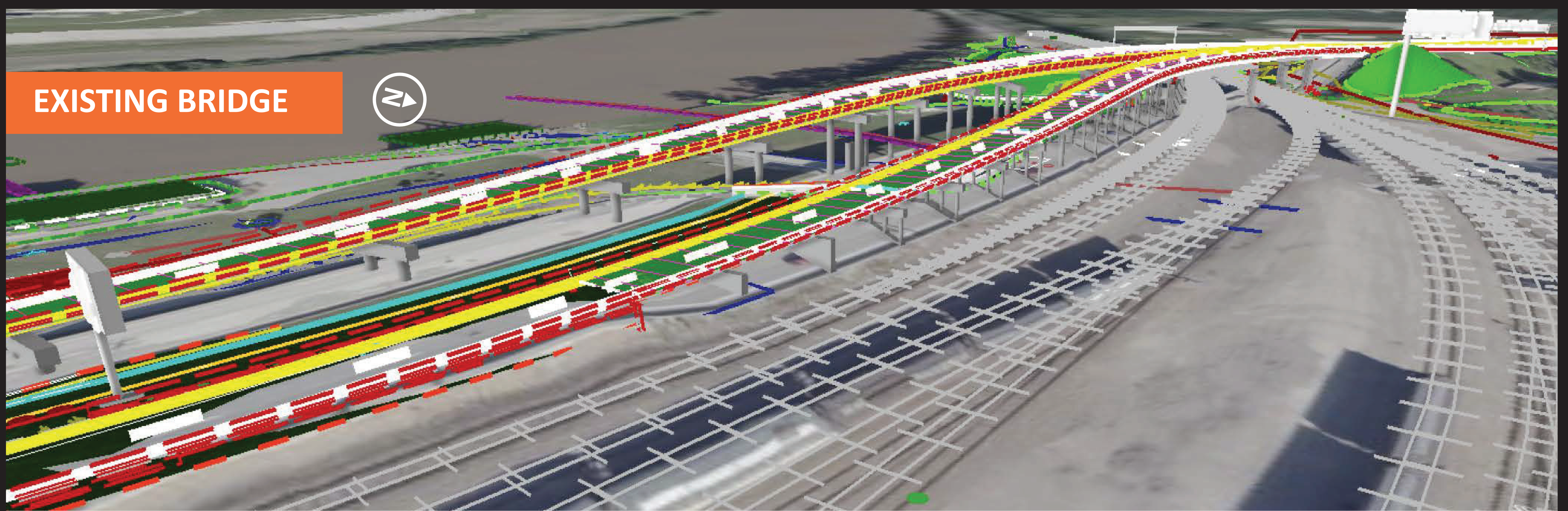
EXISTING BRIDGE
(LOOKING NORTH)



REPLACEMENT BRIDGE
(LOOKING NORTH)



EXISTING BRIDGE



PROPOSED BRIDGE

