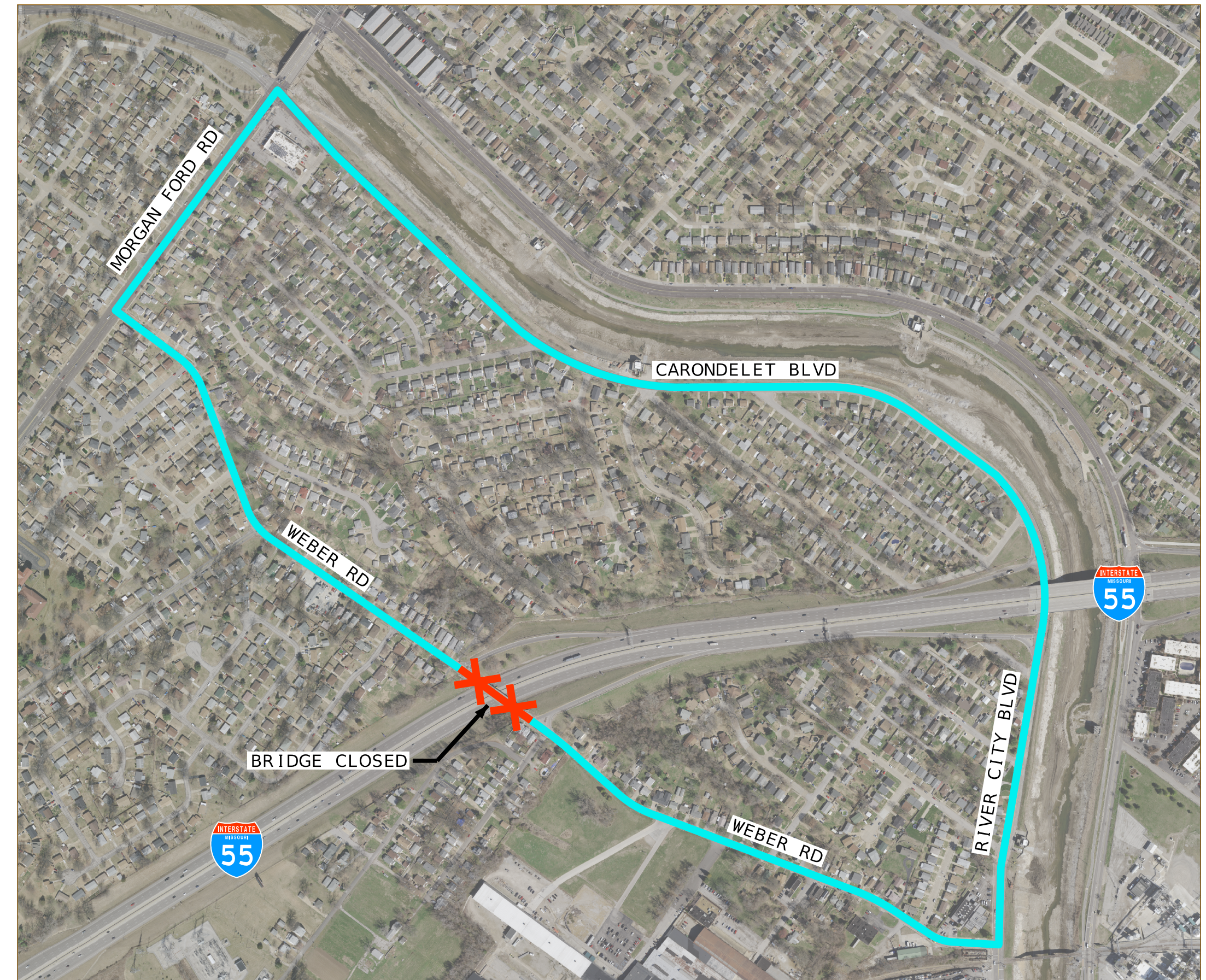


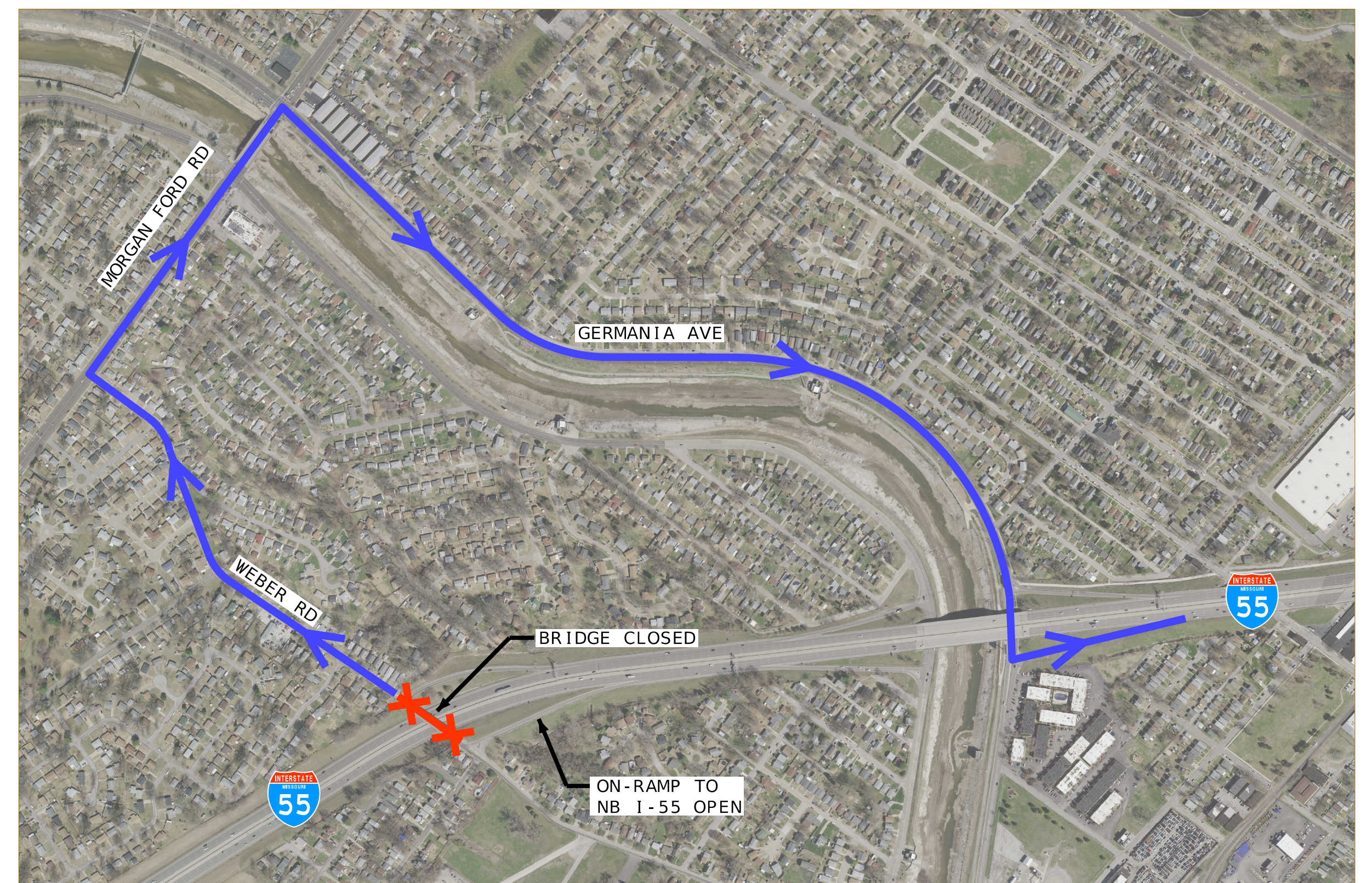
ACCESS TO WEBER RD:
I-55 SB EXIT CLOSED & WEBER BRIDGE CLOSED



ACCESS ACROSS I-55: WEBER RD BRIDGE CLOSED



ACCESS TO I-55:
WEBER BRIDGE CLOSED



WEBER RD
PROPOSED DETOUR ROUTES

