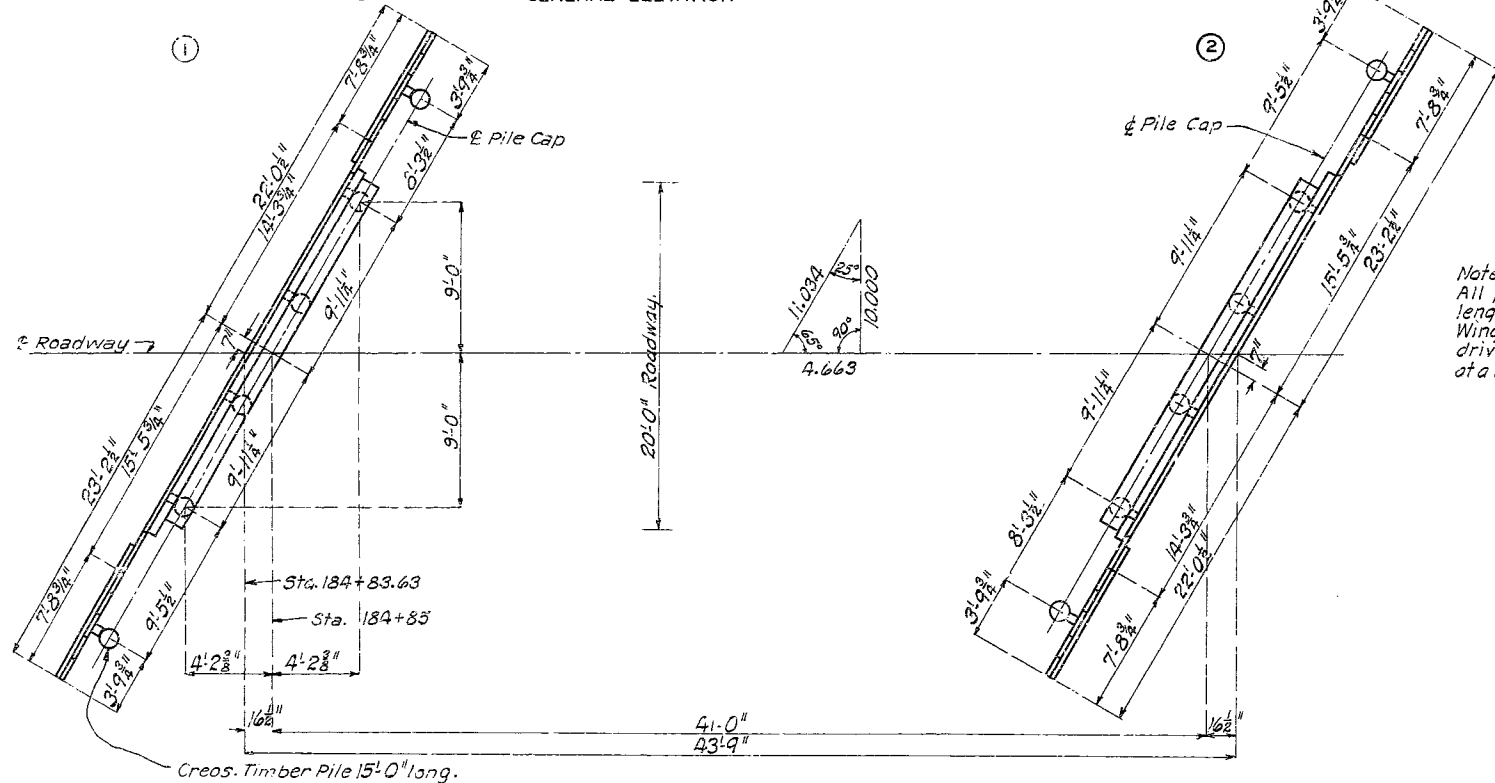
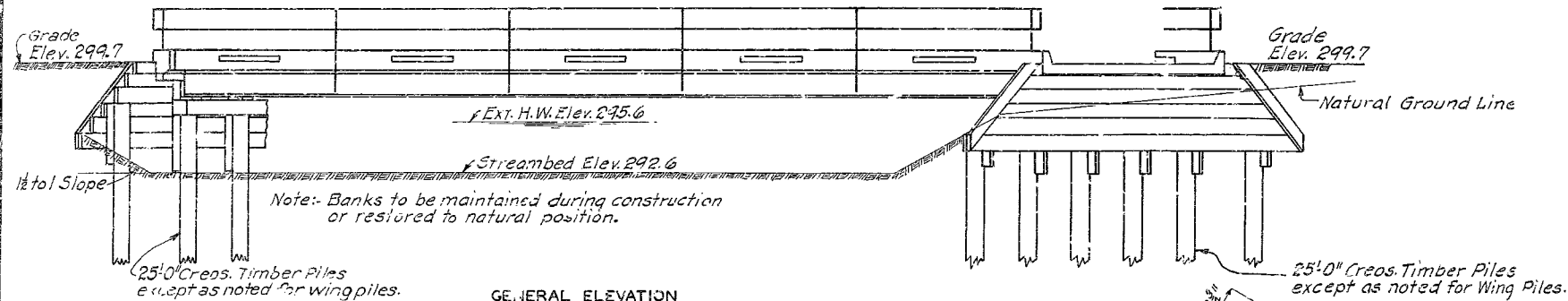


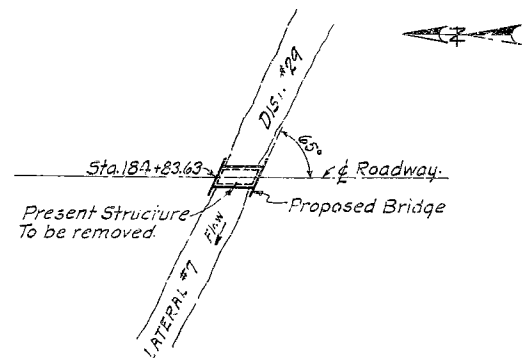
FED. ROAD DIST. NO.	STATE	F.E. AND PROJ. NO.	FISCAL YEAR	SHEET NO.	TOTAL SHEETS
5	MO.	WP58 749 (5A)	19		

Note: Outlets in curbs to be centered between railposts

41'1 Bm. Span.



*Note: See Special Provisions in regard to ordering piling.
All piling to be crosotied timber and ordered in the following
lengths: 3 @ 25'-0" and 4 @ 15'-0". These lengths include 12" cut-offs.
Wing Piles to be driven to full penetration. All other piles to be
driven to full penetration unless a bearing of 14 ton is obtained
of a lesser depth, in which case tips shall be driven to Elev. 277.0*



B.M. Elev. 295.98 "C" on N.W. Cor. Bridge 8' Rt. Sta. 184+85

ESTIMATED QUANTITIES					FINAL
ITEM		SUPERSTR.	SUBSTR.	TOTAL	QUANTITIES
Excavation Class 1	Cu. Yds.	_____	60	60	57.5
Excavation Class 2	Cu. Yds.	_____	_____	_____	_____
Coricrete Class "X"		21.7	_____	21.7	21.7
Fabricated Structural Steel	Lbs.	19300	_____	19300	19620
Reinforcing Steel	Lbs.	5310	_____	5310	5510
Cresosoted Timber Piles	Lin. Ft.	_____	248	248	248
Cresos. Timber Pile Cut-offs	Lin. Ft.	_____	12	12	14
Timber Cresosoted	F.B.M.	_____	2190	2190	2190
Temporary Bridge	Lin Ft	_____	_____	_____	40

Note: All bridge excavation will be paid for as Class 1 Bridge Excavation.

Remove Old Bridge	Lump Sum
-------------------	----------

Note: All bridge excavation will be paid for as Class I Bridge Excavation
 Remove Old Bridge Lump Sum

BILL OF REINFORCING STEEL FOR SUPERSTRUCTURE					Bending Sketch and Cutting Diagram
No.	Size	Length	Mark	Location	
16	$\frac{3}{8}" \phi$	22'9"	C1	Curb	
68	$\frac{3}{8}" \phi$	2' 0"	C2	"	
	$\frac{3}{8}" \phi$		C3	"	
198	$\frac{3}{8}" \phi$	21'0"	S1	Slab	
52	$\frac{3}{8}" \phi$	22'9"	S2	"	
38	$\frac{3}{8}" \phi$	22'6"	S3	"	
4	$\frac{3}{8}" \phi$	23'3"	S4	"	<p>1933, CUT 38 BARS</p>
	$\frac{3}{8}" \phi$		S5	"	

Note: Dimensions given are along centerline of bars and are for computed lengths.

GENERAL NOTES:

All concrete to be Class "X"
Exposed edges to be beveled $\frac{3}{4}$ " where no other bevel is noted.
All timber shall be creosoted and shall be either "Dense Longleaf or Shortleaf Structural Square Edge and Sound Southern Yellow Pine" or "Close-Grained Select Structural Douglas Fir of the West Coast Region."

All timber rough full-sawn except as noted in timber bill for pile caps. Slight variations in sawing to be in accordance with grading rules. All treated timber to be cut to lengths, shaped and bored as shown before treating. Backing plank are all billed 6' long and are to be fitted and cut in the field. Payment will be based on quantities of material in finished structure. Field holes for drift pins shall be field bored $\frac{3}{4}$ " ϕ . Unless otherwise noted, all other field holes in timber shall be field bored $\frac{3}{4}$ " ϕ . When bolts with countersunk heads are indicated on plans, cut washers shall be used under heads. O.G. washers shall be used under heads of all other bolts and under nuts of all bolts. Cost of substructure hardware to be included in price bid for timber in place. I-beams with fastenings, spacers, handrail, handrail posts with fastenings, and capplate on end beams with fastenings, will be paid for as structural steel.

Cost of metallic edging moulding will be included in price bid for concrete.
Detail shop drawings shall be submitted to the State Highway Department in duplicate and shall be approved before steel is fabricated.
Where: rubber compound is specified on plans for use in partition and expansion joints, the premoulded joint shall be securely stitched to one face of concrete with copper wire.
Paint: Shop, none: Field, contact surfaces of bolted field connections one coat red lead and surfaces inaccessible after erection three coats of red lead. No other paint to be applied by contractor. Red lead required shall be furnished by the contractor. See Special Provisions.
Bar supports and spacers will be required for reinforcing steel in superstructure. See Standard C110R and Special Provisions.
Protection caps to be placed on heads of all piles of pile bents in accordance with Section 23-6 of Standard Specifications issued April 1, 1930.
Rivets $\frac{3}{4}$ "¹⁶, holes $\frac{3}{4}$ "¹⁶, except in handrail where rivets shall be $\frac{3}{8}$ "¹⁶, holes $\frac{3}{8}$ "¹⁶. Field connections for handrail channels shall be $\frac{3}{8}$ "¹⁶ button head bolts and for connection of rail to railposts shall be $\frac{3}{8}$ "¹⁶ bolts, holes $\frac{3}{8}$ "¹⁶. All other field connections shall be $\frac{3}{4}$ "¹⁶ machine bolts, $\frac{3}{4}$ "¹⁶ holes, except where $\frac{3}{4}$ "¹⁶ turned bolts are called for in connections of rail posts to brackets. Holes for $\frac{3}{4}$ "¹⁶ turned bolts to be subpunched and reamed to a driving fit. Dardeler rivet bolts or equal may be substituted for all bolts.
Bridge excavation will be allowed for all bents within horizontal limits shown and noted on these design plans, sheet #2. This excavation will be computed from existing ground line to bottom end of 6'x6' backing supports.

All concrete shall be proportioned by the weight proportioning method
 See Special Provisions.
 Design Spec. A.A.S.H.O. Loading One Lane H-10 A.A.S.H.O.
 Structural Steel Stress 16000 #/in.²
 Reinforcing Steel Stress 16000 #/in.² } Single Line
 Concrete Class "X" 7500 #/in.²
 Creosoted Timber 1600 #/in.²

BRIDGE OVER LATERAL NO.7 DIST. NO.29

STATE ROAD FROM ROUTE 55 TO DORENA
ABOUT 9.5 MILES SOUTH OF DEVENTER
PROJECT NO. WPSS 749 (SH) STA. 184+83.63

MISSISSIPPI COUNTY

SUBMITTED BY: J. H. Jack DATE 1/11/36
BRIDGE ENGINEER
APPROVED BY: T. H. Tuttle DATE 1/11/36
CHIEF ENGINEER

APPROVED BY..... *J. N. Cutler* ..DATE
CHIEF ENGINEER

STD. C110 R

T-543

Note: This drawing is not to scale. Follow dimensions.

Sheet No. 1 of 3.

FA.

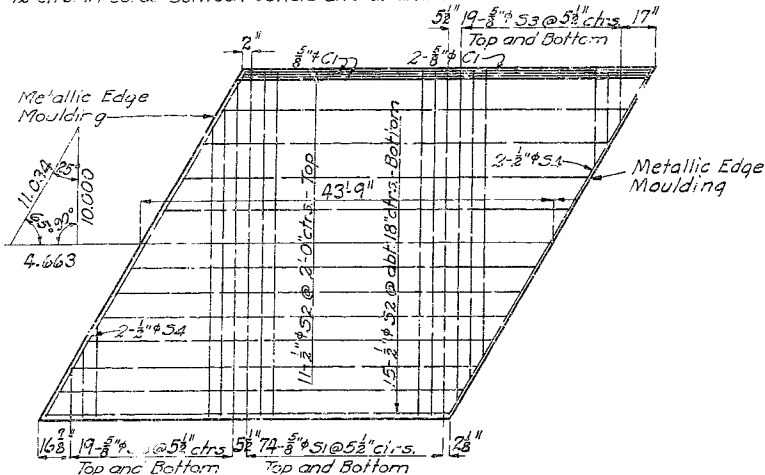
NO CONSTRUCTION GOING

FILE 25-2416

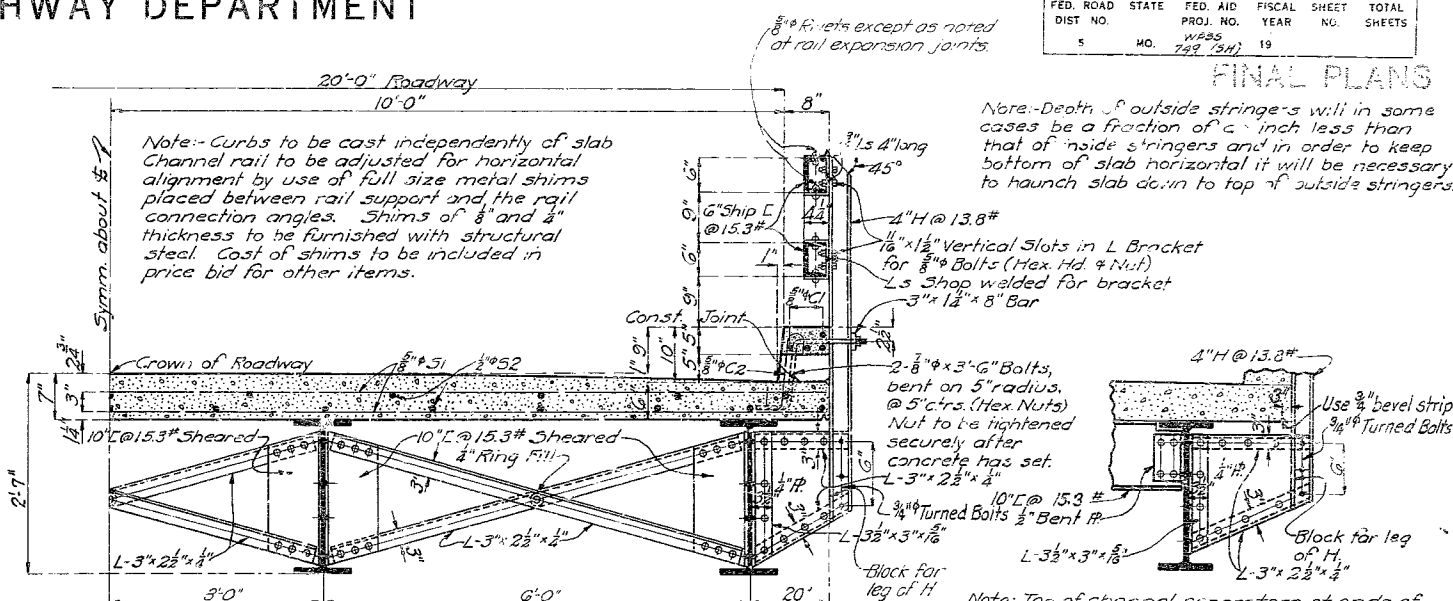
MISSOURI STATE HIGHWAY DEPARTMENT

FED. ROAD DIST. NO.	STATE	FED. AID PROJ. NO.	FISCAL YEAR	SHEET NO.	TOTAL SHEETS
5	MO.	WPS 749	19		

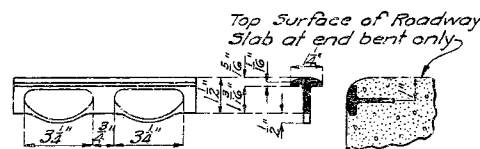
Note: Space dowel bars "C2" at approximately 12" ctrs. in curb between outlets and at ends.



PLAN OF SLAB SHOWING REINFORCING



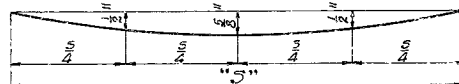
HALF SECTION THRU SPAN



Note: An approved equivalent may be substituted for edge moulding shown above.

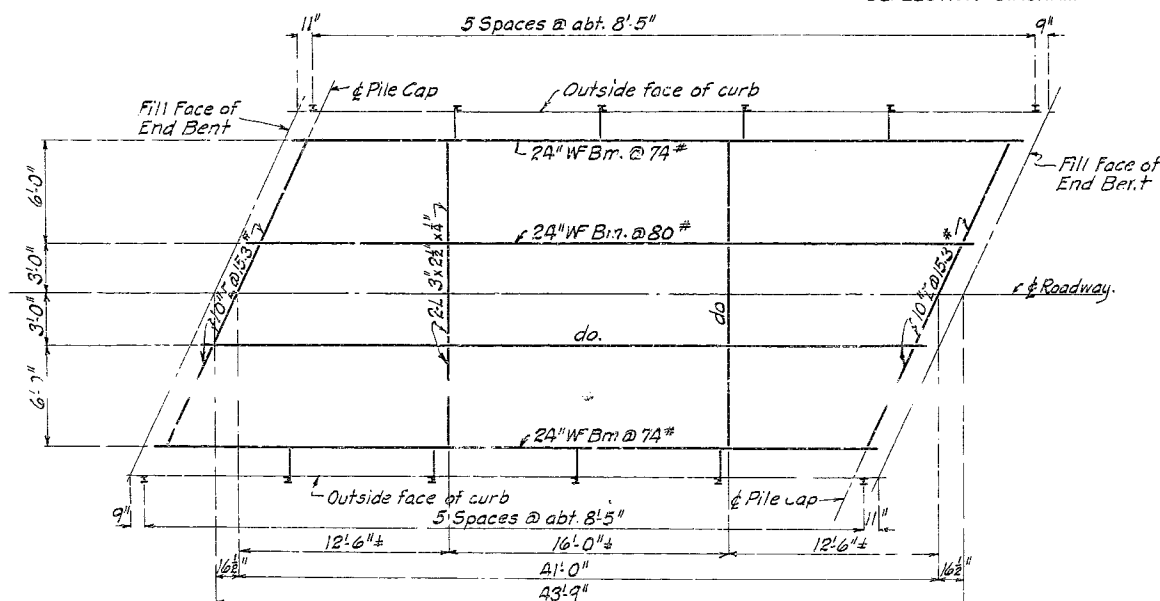
METALLIC EDGE Moulding

Note: Top of curbs under end posts shall be finished to a smooth surface parallel to grade. Not less than one nor more than four soft lead plates of 1/8" thickness shall be used under angles of each end rail post for aligning rail to correct elevation. Plates shall be 8 1/2" x 6" and shall be punched 3/8" on same gauge as the angles. No grouting permitted. Cost of lead plates to be included in price bid for other items.

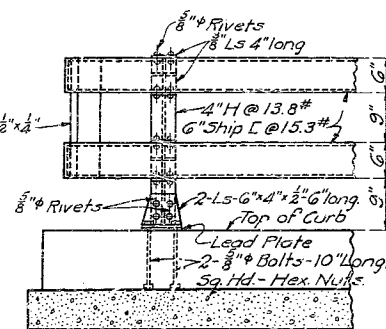


Note: Floor slab to be brought to grade and dead load deflection taken care of by increasing slab thickness. Depth of slab at outside face of curb to be kept uniform and bottom surface of slab warped between curb and outside beam to obtain required thickness at beam. Payment will be allowed for additional concrete required for thickening slab. This additional concrete is included in "Estimated Quantities."

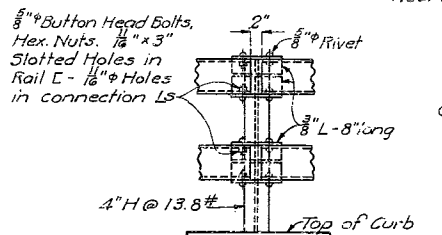
DEFLECTION DIAGRAM



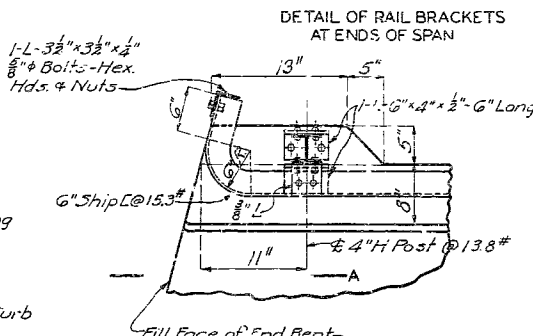
PLAN OF STRUCTURAL STEEL



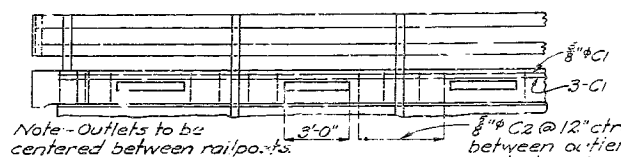
SECTION A-A



Note: Use similar detail at rail splices. Omit slotted holes and 2" expansion gap.



LOCATION OF POSTS AT END BENTS



TYPICAL PART ELEVATION SHOWING CURB DETAILS

BRIDGE OVER LATERAL NO. 7 DIST. NO. 29

STATE ROAD FROM ROUTE 55 TO DORENA
ABOUT 9.5 MILES SOUTH OF DEVENTER
PROJECT NO. WPS 749 (SH) STA. 184 + 83.63

MISSISSIPPI COUNTY

Drawn Aug. 1933 by C.A.F. Assembled Jan. 1935 by T.A.M.
Traced Aug. 1933 by C.A.F. Checked Feb. 1935 by N.W.R.
Checked Aug. 1933 by N.W.R.

Note: This drawing is not to scale. Follow dimensions.

Sheet No. 2 of 3.

FA.

NO CONSTRUCTION CHANGES

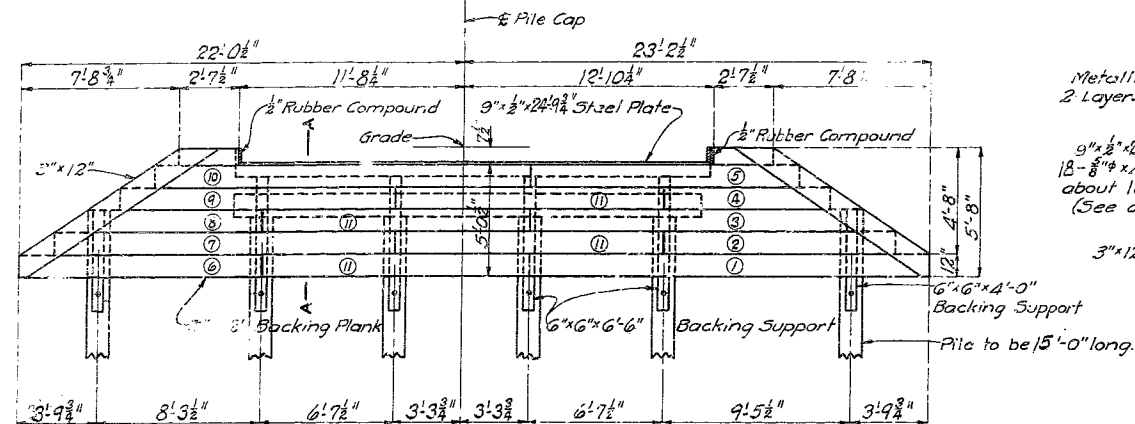
T-543

FINAL PLANS

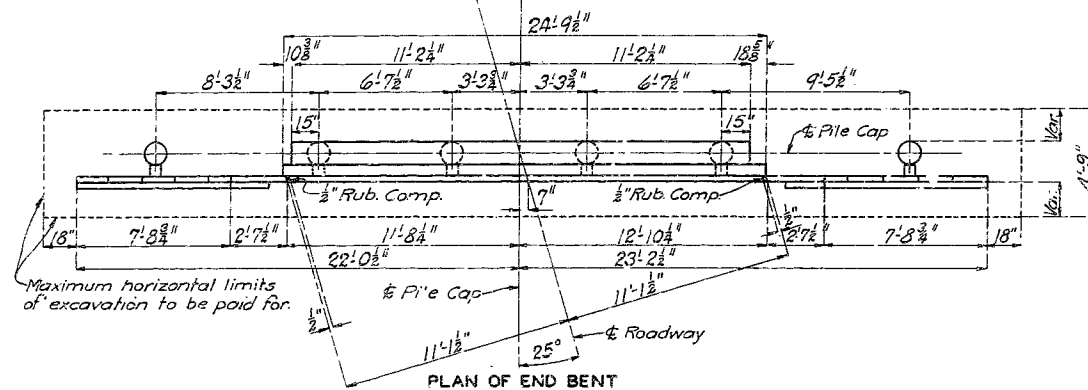
MISSOURI STATE HIGHWAY DEPARTMENT

FED. ROAD DIST. NO.	STATE	FED. AID PROJ. NO.	FISCAL YEAR	SHEET NO.	TOTAL SHEETS
5	MO.	WPS 749 (SH)	19		

FINAL PLANS



ELEVATION OF END BENT

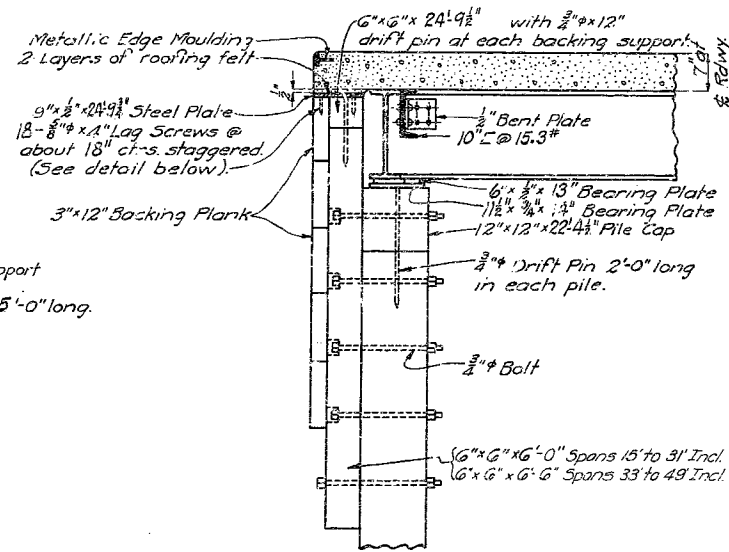


PLAN OF END BENT

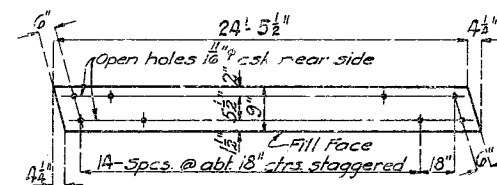
Note: Any irregularity in alignment of piling in end bents to be corrected by facing one surface of the 6"x6" backing support so as to place the surface of the backing in a true plane and eliminate any strain on the backing plank. Splice in backing plank to be made at center of 6"x6" backing support and to be alternated on the intermediate supports.

NAILING SCHEDULE:-

Backing plank to supports; 3-60 d at each support and at splices, 3-60 d each side of splice. Pieces at ends of backwall to backing plank; 4-60 d to each backing plank.



SECTION A-A

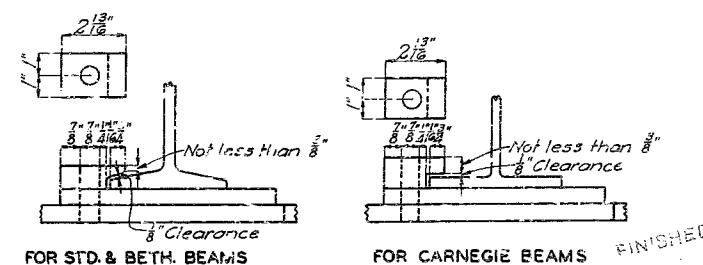
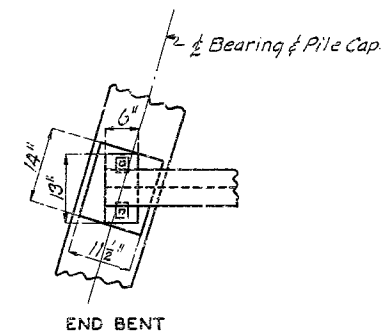


END BENT CAP PLATE

SUBSTRUCTURE TIMBER BILL					REMARKS	SHAPING AND BORING SKETCHES
PIECE	No. Pcs	SIZE	LENGTH			
Backing Plank ①	2	3"x12"	20'-4 3/4"		Cut to length.	
" ②	2	3"x12"	12'-1 3/4"		" " "	
" ③	2	3"x12"	17'-1 1/4"		" " "	
" ④	2	3"x12"	8'-9 3/4"		" " "	
" ⑤	2	3"x12"	13'-9 1/4"		" " "	
" ⑥	2	3"x12"	12'-7 1/4"		" " "	
" ⑦	2	3"x12"	17'-6 3/4"		" " "	
" ⑧	2	3"x12"	9'-3 3/4"		" " "	
" ⑨	2	3"x12"	14'-3 3/4"		" " "	
" ⑩	2	3"x12"	19'-2 3/4"		" " "	
" ⑪	8	3"x12"	13'-9"		" " "	
Edge Support	4	3"x12"	11'-2 1/4"		Cut to length & shape	
Shoulder Plank	2	3"x8"	2'-7 1/2"		Cut to length & shape	
"	2	3"x8"	2'-8 1/2"		" " "	
Backing Support	8	6"x6"	6'-6"		" " "	
"	4	6"x6"	4'-0"		" " "	
Backing Support Cap	2	6"x6"	24'-9 1/2"		Cut to length.	
Pile Cap	2	12"x12"	22'-4 1/2"		" " "	
					*	

* 525 to exactly 11 1/2" depth.

Note: Pile caps to be classified as "Beams and Stringers." All other timber to be classified as "Joists and Plank."



DETAILS OF FLANGE CLAMPS

Note: Cast iron clamps used on bearing plates to have 1/8" clearance at flange of beam to allow for expansion. All clamps to have 3/8" cored holes. Use two clamps only on each I-beam at pile caps on end bents.

BRIDGE OVER LATERAL NO. 7 DIST. NO. 29

STATE ROAD FROM ROUTE 55 TO DORENA
ABOUT 9.5 MILES SOUTH OF DEVENTER

PROJECT NO. WPS 749 (SH) STA. 184 + 83.63

MISSISSIPPI COUNTY

Drawn Aug. 1933 by C.A.F.
Traced Aug. 1933 by C.A.F. Assembled Jan. 1935 by T.A.M.
Checked Aug. 1933 by N.W.R. Checked Feb. 1935 by N.W.R.

Note: This drawing is not to scale. Follow dimensions.

Sheet No. 3 of 3.

FA.

NO CONSTRUCTION CHANGES

T-543

FINAL 193-9-348

GENERAL NOTES:

Design Specifications:

2002 - AASHTO 17th Edition
Load Factor Design

Traffic Handling:

Maintain one lane of traffic over structure during construction.

Old Work:

Outline of old work is indicated by light dashed lines. Heavy lines indicate new work.

Verify Dimensions:

Contractor shall verify all dimensions in field before ordering material.

Existing Rail Modification:

Existing holes in the 4"H @ 13.8# posts that are to be reused shall be bored out to 13/16"Ø to accommodate the new 3/4"Ø Bolts.

The cost of removal of existing channels, mounting angles, rivets and existing rail post modifications will be considered completely covered by the contract unit price for "Partial Removal of Bridge Railing".

No shop drawings will be required.

New Structural Tubing:

Fabrication of structural steel shall be in accordance with Sec 712 & 1080.

Hollow structural sections shall be in accordance with ASTM designation A 500 Grade B Structural Steel Tubing and shall meet the longitudinal CVN requirements of 15 ft-lbs at 0° F. see Sec 712.2 for reporting.

All other steel shapes and plates shall be in accordance with AASHTO M 270. Grade 36 except posts and angles shall conform to AASHTO M 270, Grade 50.

Bolts, cap screws, and nuts shall be in accordance with ASTM designation A 307 except for high strength bolts, nuts and washers noted which shall conform to AASHTO M 164.

The 3/4"Ø bolts used to connect the 10 x 4 x 1/4 structural tubing to the existing post shall be tightened in accordance with Sec 712.

The cost of furnishing and installing structural tubing, delineators and necessary hardware will be considered completely covered by the contract unit price for "Bridge Rail (Single Tube Structural Steel)".

Miscellaneous:

All Button-head bolts shall be installed with the shank end away from the roadway face of the rail.

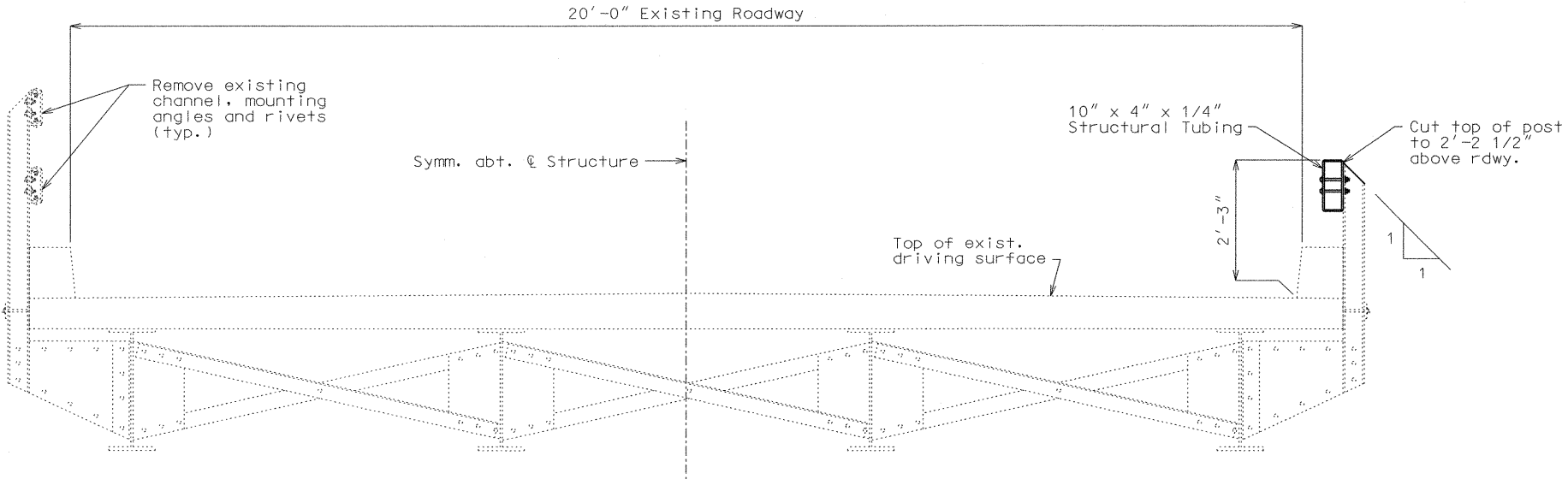
The 10x4x1/4 Structural Tubing shall be fabricated in one section, except where splice is required for structural tubing length over 40 feet.

"Sec" refers to the sections in the standard and supplemental specifications unless specified otherwise.

MISSOURI HIGHWAY AND TRANSPORTATION COMMISSION

U.I.P. EXISTING 41' I-BEAM SPANS

ROUTE 77	STATE MO	DISTRICT BR	SHEET NO. B6
JOB NO. JOP0937			
CONTRACT ID			
PROJECT NO.			
COUNTY MISSISSIPPI			
DATE 3/15/07			
SEC/SUR 34		TWP 24 N	RGE 17 E



HALF SECTION SHOWING EXISTING STRUCTURE

HALF SECTION SHOWING PROPOSED STRUCTURE

TYPICAL SECTION THRU SLAB

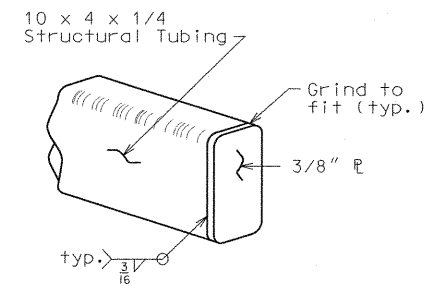
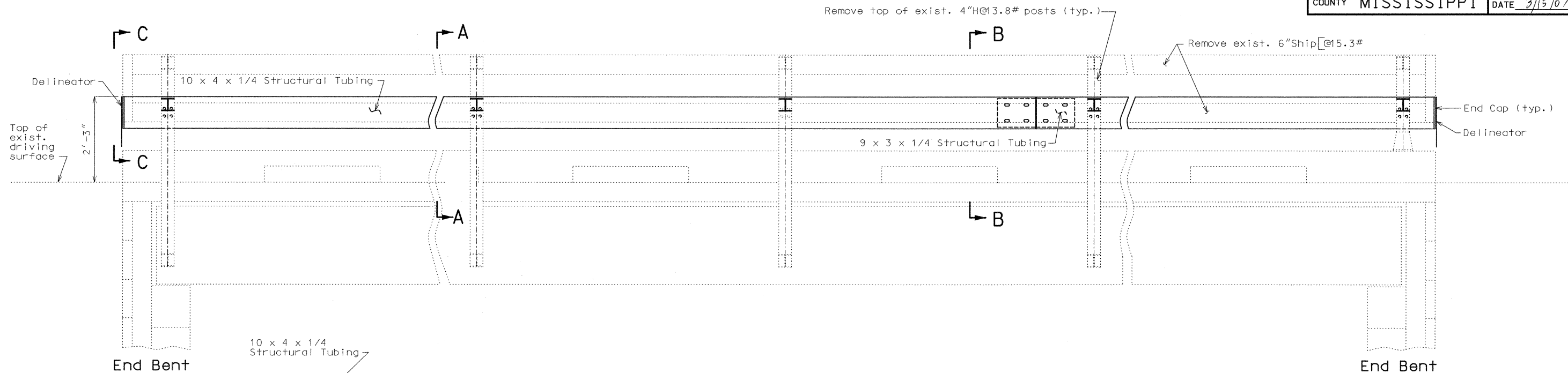
ESTIMATED QUANTITIES		
Item		Total
Partial Removal of Bridge Railing	lin. ft.	88
Bridge Rail (Single Tube Structural Steel)	lin. ft.	88

REPAIRS TO BRIDGE OVER LATERAL NO. 7
DISTRICT NO. 29

STATE ROAD FROM RTE. AA TO RTE. FF
ABOUT 1.8 MILES NORTH OF RTE. FF
PROJECT NO. STA. 184+83.63±
JOB NO. JOP0937 RTE. 77

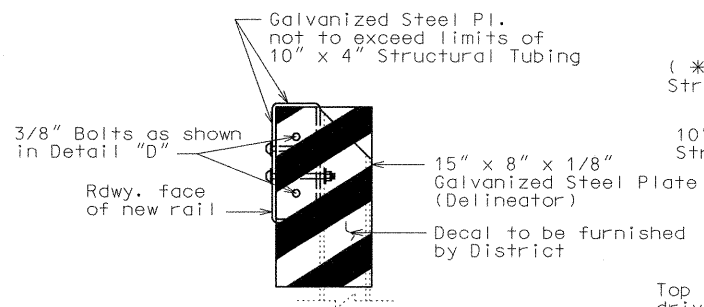
Designed Feb. 2007
Detailed Feb. 2007
Checked Mar. 2007

Note: This drawing is not to scale. Follow dimensions.

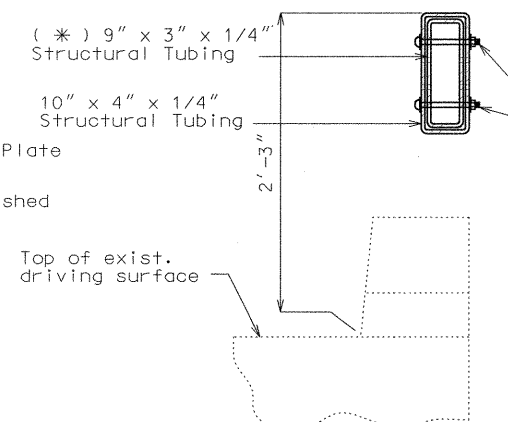


DETAIL OF END CAP
Delineator not shown in this view for clarity.

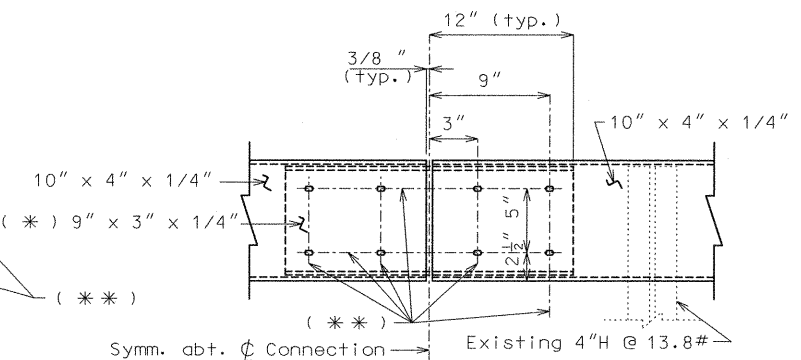
PART SECTION THRU SLAB SHOWING RAIL MODIFICATIONS



**SECTION C-C
(DELINEATOR LOCATION)
(4 LOCATIONS)**



**SECTION B-B
(SPLICED JOINT)**

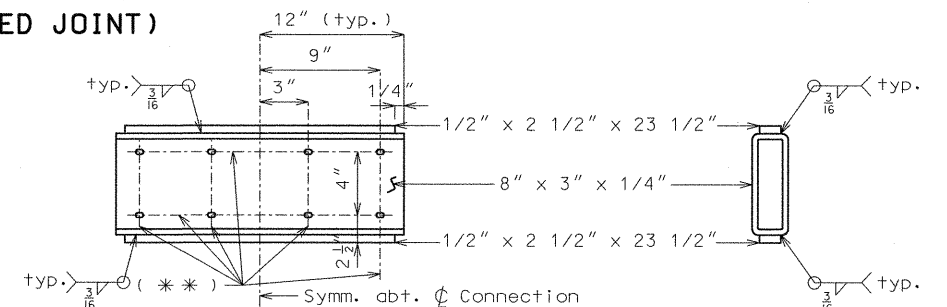


**TYPICAL ELEVATION AT
SPLICE LOCATIONS**

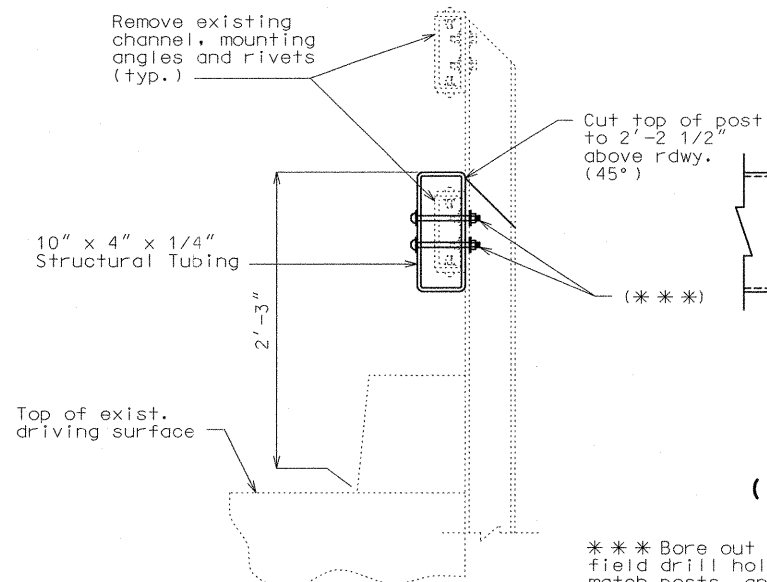
* Optional splice, 8"x3"x1/4" tubing with 1/2"x2 1/2" plates welded to the top and bottom, may be substituted in place of the standard connection, 9"x3"x1/4" tubing.

** 13/16"Ø holes in the 10"x4"x1/4" structural tubing and the 9"x3"x1/4" structural tubing or the 8"x3"x1/4" structural tubing.

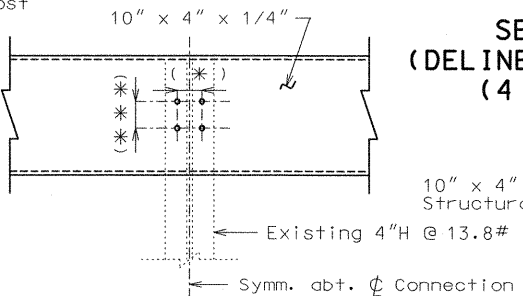
After installation, nuts shall be backed off 1/2 turn and threads shall be burred.



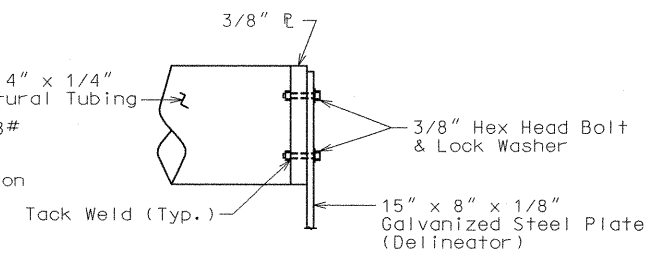
**OPTIONAL SPLICE FOR
SPLICE LOCATIONS**



**SECTION A-A
(SOLID CONNECTION)**




**ELEVATION
(SOLID CONNECTION)**





DETAIL "D"

*** Bore out existing holes in 4"H@13.8# post to 13/16"Ø, field drill holes in new 10x4x1/4 Structural Tubing to match posts, and install 3/4" button head bolts, nuts and washers.

NOTE: Drill holes in 3/8" Pl. and tack weld 3/8" nuts to back of Pl. prior to welding to end of Structural Tubing.

		<div>Missouri Department of Transportation</div> <div>State Bridge Inspection Report</div>				<div>March 13, 2025</div> <div>4:41:00PM</div>			
COUNTY: MISSISSIPPI		DISTRICT: SE		CLASS: STATBR		FED-ID: 9193		BRIDGE: T0543	
GENERAL STRUCTURE INFORMATION							***BRIDGE INSPECTION INFORMATION***		
<div>ROUTE: MO77S</div> <div>FEATURE: LATERAL DTCH #7</div> <div>STATUS: P-POSTLOAD</div> <div>LOG MILE: 61.929</div> <div>DETOUR: 19.00 MILES</div> <div>NHS: NO</div> <div>BUILT: 1936</div> <div>REHAB:</div> <div>LOCATION: S 34 T 24 R 17 E</div> <div>LATITUDE: 36 41 10.77 (DMS)</div> <div>LONGITUDE: 89 12 37.26 (DMS)</div>		<div># SPANS: 1</div> <div>LANES ON: 1</div> <div>LANES UNDER: 0</div> <div>COMPASS DIRECTION: NORTH to SOUTH</div> <div>DIRECTION OF TRAFFIC: 1-LN/2-WAY</div> <div>FUNCTIONAL CLASS: RL-MAJOR COLLECTOR</div> <div>NBI OWNER: MODOT</div> <div>NBI MAINTAINED: MODOT</div> <div>MAINTENANCE DISTRICT: SE</div> <div>MAINTENANCE COUNTY: MISSISSIPPI</div> <div>SUB AREA: 7H09</div>		<div>PLACE CODE: 80674 WOLF ISLAND</div> <div>LENGTH: 44 FT 0 IN</div> <div>MAXIMUM SPAN: 41 FT 0 IN</div> <div>APPROACH ROADWAY: 20 FT 0 IN</div> <div>CURB TO CURB: 20 FT 0 IN</div> <div>OUT TO OUT: 21 FT 4 IN</div> <div>AADT: 311</div> <div>AADT YEAR: 2024</div> <div>AADT TRUCK: 28.8%</div> <div>FUTURE AADT: 435</div> <div>FUTURE AADT YEAR: 2044</div>		<div>DATE: 11/04/2024</div> <div>RESPONSIBILITY: DISTRICT</div> <div>FREQUENCY: 12</div> <div>CALCULATED INTERVAL**: 12</div> <div>TEAM LEADER: STEVE RIGHTNOWAR</div> <div>ELEMENT: NO</div> <div>INSPECTOR 2:</div> <div>INSPECTOR 4:</div> <div>INSPECTOR 3:</div> <div>** When calculated interval exceeds the frequency, a justification comment per BIRM is required.</div>			
						GENERAL INSPECTION COMMENTS			
FRACTURE CRITICAL INSPECTION INFORMATION					***INDEPTH INSPECTION INFORMATION***				
<div>DATE:</div> <div>FREQUENCY:</div> <div>TEAM LEADER:</div> <div>INSPECTOR 2:</div> <div>** When calculated interval exceeds the frequency, a justification comment per BIRM is required.</div>					<div>RESPONSIBILITY:</div> <div>CALCULATED INTERVAL**:</div> <div>INSPECTOR 3:</div> <div>INSPECTOR 4:</div> <div>CATEGORY:</div> <div>NBI:</div> <div>METHOD:</div> <div>** When calculated interval exceeds the frequency, a justification comment per BIRM is required.</div>				
FRACTURE CRITICAL INSPECTION COMMENTS					INDEPTH INSPECTION COMMENTS				
SPECIAL INSPECTION INFORMATION					***UNDERWATER INSPECTION INFORMATION***				
<div>DATE: 06/12/2023</div> <div>FREQUENCY: 120</div> <div>TEAM LEADER:</div> <div>INSPECTOR 2: JERROD JERNIGAN</div> <div>** When calculated interval exceeds the frequency, a justification comment per BIRM is required.</div>					<div>RESPONSIBILITY: DISTRICT</div> <div>CALCULATED INTERVAL**: 116</div> <div>INSPECTOR 3:</div> <div>INSPECTOR 4:</div> <div>CATEGORY: CHANNEL CROSS SEC</div> <div>NBI: NO</div> <div>METHOD: WT TAPE</div> <div>** When calculated interval exceeds the frequency, a justification comment per BIRM is required.</div>				
SPECIAL INSPECTION COMMENTS					UNDERWATER INSPECTION COMMENTS				
OTHER SPECIAL INSPECTIONS					OTHER UNDERWATER INSPECTIONS				
<div>DATE</div> <div>FREQUENCY</div> <div>CATEGORY</div> <div>NBI</div> <div>CALCULATED INTERVAL</div> <div>RESPONSIBILITY</div> <div>METHOD</div> <div>01/30/2018</div> <div>999</div> <div>QUALITY ASSURANCE</div> <div>NO</div> <div>BRIDGEDIV</div>					<div>DATE</div> <div>FREQUENCY</div> <div>CATEGORY</div> <div>NBI</div> <div>CALCULATED INTERVAL</div> <div>RESPONSIBILITY</div> <div>METHOD</div>				
Design_No = T0543									
<div>Page 1</div> <div>This report contains information that is protected from disclosure by federal law, 23 USC Section 409 and the Missouri Open Records Law (Sunshine Act), Section 610.021 RSMo. Please review MoDOT's policy and procedure manual on the Sunshine Act before releasing any of the information contained herein.</div>									

		Missouri Department of Transportation			March 13, 2025	
		State Bridge Inspection Report			4:41:00PM	
COUNTY: MISSISSIPPI		DISTRICT: SE	CLASS: STATBR	FED-ID: 9193	BRIDGE: T0543	
STRUCTURE POSTING						
APPROVED CATEGORY: S-5		CENTERLINE OF BRIDGE AND TRUCKS OVER 13 TONS 15 MPH ON BRIDGE.				
Ton 1: 13		Ton 2:	Ton 3:			
COMMENTS:						
FIELD CATEGORY: S-5		CENTERLINE OF BRIDGE AND TRUCKS OVER 13 TONS 15 MPH ON BRIDGE.				
Ton 1: 13		Ton 2:	Ton 3:	PROBLEM:	PROBLEM DIRECTION:	
COMMENTS:						
GENERAL COMMENTS/MAJOR RATED ITEMS						
GENERAL COMMENTS: (BOWDEJ1, 09/05/2008)--(41') SMP WF GDR SPAN						
[ITEM 58] DECK: 5-FAIR CONDITION			COMMENTS: (WIESEJ1, 08/08/2011)--T CRKS, DELAMS, EDGE DETER WITH EXPOSED REBAR			
RATING : 11/26/2007						
[ITEM 59] SUPER: 6-SATISFACTORY CONDITION			COMMENTS: (WIESEJ1, 08/08/2011)--PK RUST TOP FLANGE			
RATING : 05/18/2001						
[ITEM 60] SUB: 5-FAIR CONDITION			COMMENTS: (BOWDEJ1, 11/20/2009)--ALL PILE REPLACED BOTH ABUT'S 2009			
RATING : 11/20/2009						
[ITEM 61] BANK/CHANNEL: 7-MINOR DAMAGE			COMMENTS: (SHUNAT1, 02/08/2018)--MINOR DAMAGE TO BANK PROTECTION			
RATING : 02/08/2018			(SHUNAT1, 02/08/2018)--RATING RAISED FROM 6 TO 7 DUE TO ROCK PLACED ON SOUTH SLOPE			
[ITEM 113] SCOUR: 8-STABLE FOR CALCULATED			COMMENTS:			
RATING : 05/18/2001						
EVALUATION TYPE :						
[ITEM 71] WATERWAY ADEQUACY: MINOR DELAYS APPRCH			COMMENTS:			
RATING : 05/18/2001						
[ITEM 72] APPRRDWY ALIGNMENT: 8-VERYGOOD			COMMENTS:			
RATING : 05/18/2001						
RAILING AND APPROACH PAVEMENT COMPONENTS AND RATINGS						
[ITEM 36A] BRIDGE RAILING RATING: DOESNT MEET CURRNT STND-0			RATING : 02/24/2004	COMMENTS:		
<u>MATERIAL</u>	<u>CONSTRUCTION</u>	<u>DIRECTION</u>	<u>COMMENTS</u>			
REINFORCED CONCRETE	CURB	BOTH				
<u>CONDITION</u>	<u>LOCATION 1</u>	<u>LOCATION 2</u>	<u>SEVERITY</u>	<u>COMMENT</u>		
SPALLS	RANDOM		MODERATE	(BLALOR1, 11/13/2014)--W/ EXPOSED REBAR		
STEEL	CHANNEL-12"	BOTH	(BOWDEJ1, 11/26/2007)--LOW PROFILE - REHAB 2007			
[ITEM 36B] TRANSITION RAILING RATING: NOT PROVIDED-0			RATING : 05/18/2001	COMMENTS:		
[ITEM 36C] APPROACH RAILING RATING: NOT PROVIDED-0			RATING : 05/18/2001	COMMENTS:		
[ITEM 36D] RAIL END TREATMENT RATING: NOT PROVIDED-0			RATING : 05/18/2001	COMMENTS:		
Design_No = T0543						
Page 2						
This report contains information that is protected from disclosure by federal law, 23 USC Section 409 and the Missouri Open Records Law (Sunshine Act), Section 610.021 RSMo. Please review MoDOT's policy and procedure manual on the Sunshine Act before releasing any of the information contained herein.						

		Missouri Department of Transportation				March 13, 2025	
		State Bridge Inspection Report				4:41:00PM	
COUNTY: MISSISSIPPI		DISTRICT: SE		CLASS: STATBR		FED-ID: 9193	
				BRIDGE: T0543			
APPROACH PAVEMENT: *Overall condition assigned for each approach pavemenet component is shown below.							
<u>MATERIAL</u>		<u>CONSTRUCTION</u>		<u>DIRECTION</u>		<u>CONDITION*</u>	
ASPHALT		BITUMINOUS MAT		BOTH		FAIR	
DRAINAGE, EXPANSION DEVICES, BANK/SLOPE, AND DECK PROTECTIVE COMPONENTS							
<u>DECK PROTECTIVE COMPONENTS:</u>							
<u>SERIES TYPE-#</u>		<u>COMPONENT</u>		<u>MATERIAL</u>		<u>CONSTRUCTION</u>	
MAIN SERIES-1		WEARING SURFACE		ASPHALT		BITUMINOUS SEAL COAT	
						<u>THICKNESS</u>	
						3.4 IN	
						<u>YEAR APPLIED</u>	
						2015	
						<u>MANUFACTURE</u>	
						<u>OVERALL CONDITION</u>	
						GOOD	
<u>COMMENT:</u>							
		DECK PROTECTION		NOTAPPLICABLE		NONE	
<u>COMMENT:</u>							
		MEMBRANE		LIQUID SEALANT		BUILT-UP	
<u>COMMENT:</u>							
<u>DRAINAGE COMPONENTS:</u>							
		<u>COMPONENT</u>		<u>MATERIAL</u>		<u>CONSTRUCTION</u>	
		DRAINAGE		REINFORCED CONCRETE		CURB OUTLET	
						<u>DIRECTION</u>	
						<u>COMMENTS</u>	
<u>EXPANSION DEVICE COMPONENTS:</u>							
<u>SUB UNIT-#</u>		<u>SUB LABEL</u>		<u>COMPONENT</u>		<u>MATERIAL</u>	
						<u>CONSTRUCTION</u>	
						<u>GAP</u>	
						<u>YEAR APPLIED</u>	
						<u>MANUFACTURE</u>	
						<u>OVERALL CONDITION</u>	
<u>COMMENT:</u>							
<u>BANK/SLOPE PROTECTION COMPONENTS:</u>							
		<u>COMPONENT</u>		<u>MATERIAL</u>		<u>CONSTRUCTION</u>	
						<u>DIRECTION</u>	
						<u>COMMENTS</u>	
DECK COMPONENTS							
<u>SPAN TYPE-#</u>		<u>COMPONENT</u>		<u>MATERIAL</u>		<u>CONSTRUCTION</u>	
MAIN SPANS-1		DECK		REINFORCED CONCRETE		CAST-IN-PLACE	
						<u>COMMENTS</u>	
		<u>CONDITION</u>		<u>LOCATION 1</u>		<u>LOCATION 2</u>	
		DELAMINATION		THROUGHOUT		<u>SEVERITY</u>	
		DETERIORATION		AT OUTLETS		MODERATE	
		DETERIORATION		EDGE		MODERATE	
		SECTION LOSS		EDGE		MEDIUM	
		TRANSVERSE CRACKS		THROUGHOUT		INITIAL	
						MANY	
						(FINLEM, 02/25/2010)--W/ EXP. REBAR	
						(LAMBEJ1, 11/04/2011)--W/EFF.	
SUPERSTRUCTURE COMPONENTS							
<u>SERIES TYPE-#</u>		<u>SPAN TYPE</u>		<u>MATERIAL</u>		<u>CONSTRUCTION</u>	
MAIN SERIES-1		SIMPLE SPAN		STEEL		WIDE FLANGE GIRDERS	
						<u>LABEL</u>	
						<u>COMMENTS</u>	
<u>SPAN</u>		<u>COMPOSITE INDICATOR</u>		<u>LENGTH</u>		<u>WEATHERING STEEL</u>	
MAIN SPANS-1		NON-COMPOSITE		41 FT 0 IN		NO	
						<u>COMMENTS</u>	
		<u>CONDITION</u>		<u>LOCATION 1</u>		<u>LOCATION 2</u>	
						<u>SEVERITY</u>	
						<u>MEASUREMENT</u>	
						<u>COMMENT</u>	
Design_No = T0543							
Page 3							
This report contains information that is protected from disclosure by federal law, 23 USC Section 409 and the Missouri Open Records Law (Sunshine Act), Section 610.021 RSMo. Please review MoDOT's policy and procedure manual on the Sunshine Act before releasing any of the information contained herein.							



Missouri Department of Transportation State Bridge Inspection Report

March 13, 2025
4:41:00PM

COUNTY: MISSISSIPPI

DISTRICT: SE

CLASS: STATBR

FED-ID: 9193


BRIDGE: T0543


DECK LIFTING	TOP FLANGE	MINOR	(FINLEM, 02/25/2010)--E. EXT GDR
OTHER	GIRDERS	NOT APPLICABLE	(ROBINC3, 11/28/2018)--DEAD LOAD DEFLECTION ALL GIRDERS
PACK RUST	TOP FLANGE	MODERATE	
PUMPING RUST	TOP FLANGE	MINOR	
RUSTING	THROUGHOUT	MINOR	

SUBSTRUCTURE COMPONENTS

<u>SUBSTRUCTURE</u>	<u>SKIEW</u>	<u>LENGTH</u>	<u>MATERIAL</u>	<u>CONSTRUCTION</u>	<u>LABEL</u>	<u>COMMENTS</u>
ABUTMENT-1	LA-25 DEGREES	22 FT 4 IN	TIMBER	NON-INTEGRAL		
	<u>CONDITION</u>		<u>LOCATION 1</u>	<u>LOCATION 2</u>	<u>SEVERITY</u>	<u>MEASUREMENT</u> <u>COMMENT</u>
<u>ASSOCIATED COMPONENT</u>		<u>MATERIAL</u>		<u>CONSTRUCTION</u>		
BEAM CAP		TIMBER		BEAM		
	<u>CONDITION</u>		<u>LOCATION 1</u>	<u>LOCATION 2</u>	<u>SEVERITY</u>	<u>MEASUREMENT</u> <u>COMMENT</u>
	OTHER		BEAM CAP		NOT APPLICABLE	(SHUNAT1, 02/08/2018)--MINOR SPLITTING THROUGHOUT
PILING		TIMBER		OTHER		
	<u>CONDITION</u>		<u>LOCATION 1</u>	<u>LOCATION 2</u>	<u>SEVERITY</u>	<u>MEASUREMENT</u> <u>COMMENT</u>
	REPLACE WITH H PILE		ALL		NOT APPLICABLE	
STRAIGHT WINGS		TIMBER		PLANKS		
	<u>CONDITION</u>		<u>LOCATION 1</u>	<u>LOCATION 2</u>	<u>SEVERITY</u>	<u>MEASUREMENT</u> <u>COMMENT</u>
WING PILES		TIMBER		OTHER		
	<u>CONDITION</u>		<u>LOCATION 1</u>	<u>LOCATION 2</u>	<u>SEVERITY</u>	<u>MEASUREMENT</u> <u>COMMENT</u>
	ROTTEN		THROUGHOUT		HEAVY	
BACKWALL		TIMBER		PLANKS		
	<u>CONDITION</u>		<u>LOCATION 1</u>	<u>LOCATION 2</u>	<u>SEVERITY</u>	<u>MEASUREMENT</u> <u>COMMENT</u>
FIXED BEARING		STEEL		FLAT PLATE		
	<u>CONDITION</u>		<u>LOCATION 1</u>	<u>LOCATION 2</u>	<u>SEVERITY</u>	<u>MEASUREMENT</u> <u>COMMENT</u>
ABUTMENT-2	LA-25 DEGREES	22 FT 4 IN	TIMBER	NON-INTEGRAL		
	<u>CONDITION</u>		<u>LOCATION 1</u>	<u>LOCATION 2</u>	<u>SEVERITY</u>	<u>MEASUREMENT</u> <u>COMMENT</u>
<u>ASSOCIATED COMPONENT</u>		<u>MATERIAL</u>		<u>CONSTRUCTION</u>		
BEAM CAP		TIMBER		BEAM		
	<u>CONDITION</u>		<u>LOCATION 1</u>	<u>LOCATION 2</u>	<u>SEVERITY</u>	<u>MEASUREMENT</u> <u>COMMENT</u>
	SPLITTING		THROUGHOUT		MINOR	
PILING		TIMBER		OTHER		
	<u>CONDITION</u>		<u>LOCATION 1</u>	<u>LOCATION 2</u>	<u>SEVERITY</u>	<u>MEASUREMENT</u> <u>COMMENT</u>
	REPLACE WITH H PILE		ALL		NOT APPLICABLE	
	RUSTING		THROUGHOUT		MINOR	
STRAIGHT WINGS		TIMBER		PLANKS		
	<u>CONDITION</u>		<u>LOCATION 1</u>	<u>LOCATION 2</u>	<u>SEVERITY</u>	<u>MEASUREMENT</u> <u>COMMENT</u>
WING PILES		STEEL		H-SHAPE		
	<u>CONDITION</u>		<u>LOCATION 1</u>	<u>LOCATION 2</u>	<u>SEVERITY</u>	<u>MEASUREMENT</u> <u>COMMENT</u>
BACKWALL		TIMBER		PLANKS		
	<u>CONDITION</u>		<u>LOCATION 1</u>	<u>LOCATION 2</u>	<u>SEVERITY</u>	<u>MEASUREMENT</u> <u>COMMENT</u>
	DECAYING		THROUGHOUT		MODERATE	
FIXED BEARING		STEEL		FLAT PLATE		
	<u>CONDITION</u>		<u>LOCATION 1</u>	<u>LOCATION 2</u>	<u>SEVERITY</u>	<u>MEASUREMENT</u> <u>COMMENT</u>
	RUSTING		THROUGHOUT		LIGHT	

OVER/UNDER ROUTES CLEARANCE INFORMATION

		<div>Missouri Department of Transportation</div> <div>State Bridge Inspection Report</div>				<div>March 13, 2025</div> <div>4:41:00PM</div>			
COUNTY: MISSISSIPPI		DISTRICT: SE		CLASS: STATBR		FED-ID: 9193		BRIDGE: T0543	
<div><div>CLEARANCES OVER DECK</div><div><div>VERTICAL CLEARANCE TYPE**</div><div>VALUE</div><div>DIRECTION</div><div>DATE</div><div>COMMENT</div></div></div> <div><div>**NOTE: Vertical clearances for permitting purposes are taken as 2 inches less than the actual field measured clearance.</div></div>									
<div><div>CLEARANCES UNDER BRIDGE</div><div><div>RECORD #</div><div>ROUTE</div><div># LANES</div><div>DIRECTION OF TRAFFIC</div><div>RIGHT LATERAL CLEARANCE</div><div>LEFT LATERAL CLEARANCE</div><div>UR-ID</div></div><div><div>VERTICAL CLEARANCE TYPE**</div><div>VALUE</div><div>DIRECTION</div><div>DATE</div><div>COMMENT</div></div></div> <div><div>**NOTE: Vertical clearances for permitting purposes are taken as 2 inches less than the actual field measured clearance.</div></div>									
STRUCTURE PAINT INFORMATION									
<div><div>CONDITION:FAIR</div><div>RUST AMOUNT : 6=1.0% OF SURFACE RUSTED</div><div>STEEL TONS : 10</div></div> <div><div><div>ORIGINAL PAINT</div><div>PAINT TYPE : NAME : PAINT COLOR : PAINT YEAR : 1974 MILS :</div></div><div><div>CONTRACT REPAINT</div><div>PAINT TYPE : NAME : PAINT COLOR : PAINT YEAR : MILS :</div></div><div><div>DEPARTMENT REPAINT</div><div>PAINT TYPE : S SYSTEM NAME : CAL SULPH/LEAD PAINT PAINT COLOR : GRAY PAINT YEAR : 2008 MILS : 9</div><div>MANUFACTURE :WATSON SURFACE PREP :HAND CLEANED</div></div></div>									
REQUESTED WORK ITEMS									
GENERAL WORK COMMENTS:									
<div><div>RESPONSIBILITY</div><div>LOCATION</div><div>ITEM</div><div>CATEGORY</div><div>PRIORITY</div><div>DATE</div><div>WORK ITEM COMMENT</div></div>									
UTILITY ATTACHMENTS									
<div><div>UTILITY</div><div>OWNER</div><div>METHOD</div><div>MEASUREMENT TYPE</div><div>VALUE</div><div>NUMBER</div><div>UTILITY ATTACHMENT COMMENT</div></div>									
PROGRAM NOTES INFORMATION									
<div>Design_No = T0543</div> <div><div>Page 5</div><div>This report contains information that is protected from disclosure by federal law, 23 USC Section 409 and the Missouri Open Records Law (Sunshine Act), Section 610.021 RSMo. Please review MoDOT's policy and procedure manual on the Sunshine Act before releasing any of the information contained herein.</div></div>									

		Missouri Department of Transportation			March 13, 2025																																														
		State Bridge Inspection Report			4:41:00PM																																														
COUNTY: MISSISSIPPI		DISTRICT: SE		CLASS: STATBR	FED-ID: 9193	BRIDGE: T0543																																													
<u>YEAR</u> 2027	<u>PROJECT #</u> SE0062	<u>MONTH LET</u> 1	<u>YEAR LET</u> 2027	<u>ITEMS</u> REPLACE BRIDGE	<u>COMMENT</u>																																														
COMPUTER GENERATED RATINGS AND DEFICIENCY ITEMS					***ADVANCED SIGN INFORMATION***																																														
<p>NOTE: The items listed in this section are updated whenever computer edits are ran on a structure after the inspection updates have been entered in to TMS.</p> <table><tr><td><u>Rated Item</u></td><td><u>Rating</u></td><td><u>Rating Date</u></td></tr><tr><td>[Item 67] Structure Evaluation Rating:</td><td>2-BASICALLY INTOLRBLE REQ</td><td>1/3/2024</td></tr><tr><td>[Item 68] Deck Geometry Rating:</td><td>4-MEETS MINIMUM TOLERABLE</td><td>2/8/2017</td></tr><tr><td>[Item 69] Underclearance:</td><td>N-NOT APPLICABLE</td><td>5/18/2001</td></tr><tr><td>Sufficiency Rating:</td><td>43.9%</td><td>3/6/2024</td></tr><tr><td>Deficiency:</td><td>STRUCTURAL</td><td>1/3/2024</td></tr><tr><td>Funding Eligibility:</td><td>FULL</td><td>----</td></tr><tr><td>Estimated New Structure Length:</td><td>66 FT.</td><td>----</td></tr><tr><td>Estimated Structure Cost:</td><td>\$343,134</td><td>----</td></tr><tr><td>Estimated Total Project Cost:</td><td>\$514,701</td><td>----</td></tr><tr><td>Year of Cost Estimate:</td><td>2025</td><td>----</td></tr></table> <p>NOTE: The above structure length and cost estimates are computer generated using algorithms in the TMS system. These algorithms are generalized to use NBI items to come up with a new structure length and width to calculate a new area which is taken times a representative cost per square foot. The actual structure size and cost may vary significantly from these numbers once site specific engineering is done.</p>					<u>Rated Item</u>	<u>Rating</u>	<u>Rating Date</u>	[Item 67] Structure Evaluation Rating:	2-BASICALLY INTOLRBLE REQ	1/3/2024	[Item 68] Deck Geometry Rating:	4-MEETS MINIMUM TOLERABLE	2/8/2017	[Item 69] Underclearance:	N-NOT APPLICABLE	5/18/2001	Sufficiency Rating:	43.9%	3/6/2024	Deficiency:	STRUCTURAL	1/3/2024	Funding Eligibility:	FULL	----	Estimated New Structure Length:	66 FT.	----	Estimated Structure Cost:	\$343,134	----	Estimated Total Project Cost:	\$514,701	----	Year of Cost Estimate:	2025	----	<table><tr><td><u>SIGN #</u></td><td><u>SIGN TYPE</u></td><td><u>PROBLEM</u></td><td><u>PROBLEM DIRECTION</u></td></tr><tr><td>1</td><td>YIELD TO ONCOMING TRAFFIC</td><td></td><td></td></tr><tr><td>2</td><td>B - ONE LANE BRIDGE</td><td></td><td></td></tr></table>		<u>SIGN #</u>	<u>SIGN TYPE</u>	<u>PROBLEM</u>	<u>PROBLEM DIRECTION</u>	1	YIELD TO ONCOMING TRAFFIC			2	B - ONE LANE BRIDGE		
					<u>Rated Item</u>	<u>Rating</u>	<u>Rating Date</u>																																												
					[Item 67] Structure Evaluation Rating:	2-BASICALLY INTOLRBLE REQ	1/3/2024																																												
					[Item 68] Deck Geometry Rating:	4-MEETS MINIMUM TOLERABLE	2/8/2017																																												
[Item 69] Underclearance:	N-NOT APPLICABLE	5/18/2001																																																	
Sufficiency Rating:	43.9%	3/6/2024																																																	
Deficiency:	STRUCTURAL	1/3/2024																																																	
Funding Eligibility:	FULL	----																																																	
Estimated New Structure Length:	66 FT.	----																																																	
Estimated Structure Cost:	\$343,134	----																																																	
Estimated Total Project Cost:	\$514,701	----																																																	
Year of Cost Estimate:	2025	----																																																	
<u>SIGN #</u>	<u>SIGN TYPE</u>	<u>PROBLEM</u>	<u>PROBLEM DIRECTION</u>																																																
1	YIELD TO ONCOMING TRAFFIC																																																		
2	B - ONE LANE BRIDGE																																																		
OUTFALL INSPECTION INFORMATION																																																			
# OUTFALLS:		INSPECTOR:																																																	
STATUS:		DATE:																																																	
NOTES:																																																			

Design_No = T0543

Page 6

This report contains information that is protected from disclosure by federal law, 23 USC Section 409 and the Missouri Open Records Law (Sunshine Act), Section 610.021 RSMo. Please review MoDOT's policy and procedure manual on the Sunshine Act before releasing any of the information contained herein.



Missouri Department of Transportation
Bridge Inventory and Inspection System
Structural Inventory & Appraisal Sheet

March 13, 2025
5:01:28pm

COUNTY : MISSISSIPPI BRIDGE : T0543 1 REVIEW STATUS : CONVERTED NBI STATUS : T
RECORD TYPE : ROUTE CARRIED 'ON' STRUCT RUN DATE : 3/7/2025 SUBMITTAL YEAR : 2025

GENERAL STRUCTURE INFORMATION			ROUTE DESIGNATION INFORMATION		
1	State	MISSOURI	5A	Record Type	ROUTE CARRIED 'ON' STRUCT
2	District	SE	5B	Route Signing Prefix	MO
3	County	MISSISSIPPI	5C	Designated Level of Service	MAINLINE
8	Federal ID No.	9193	5D	Route Number	00077
27	Year Built	1936	5E	Directional Suffix	NOT APPLICABLE
106	Year Reconstructed	0	7	Facility Carried	MO 77 S
42A	Type of Service On	HIGHWAY	12	Base Hwy. Network	NO
21	Structure Maintenance	STATE HIGHWAY AGENCY	13A	LRS Inventory Route No.	
22	Structure Owner	STATE HIGHWAY AGENCY	13B	Subroute No.	
33	Br. Median Code	NO MEDIAN	20	Toll Status	ON FREE ROAD
37	Historical Significance	NOT ELIGIBLE FOR NR OF HP	26	Functional Classification	07-RURAL MAJOR COLLECTOR
101	Parallel Struc Desg	NONE EXISTS	28A	Lanes on Structure	01
103	Temporary Structure	NOT TEMPORARY	100	STRAHNET Designation	RTE NOT A DEFENSE HWY
112	NBIS Bridge Length	YES	104	National Highway System	NOT ON NHS
			105	Federal Lands Highway	NOT APPLICABLE
			110	Designated Nat. Network	NO
STRUCTURE LOCATION INFORMATION			STRUCTURE TRAFFIC INFORMATION		
4	Place	WOLF ISLAND	29	AADT	311
	Code	80674	30	AADT Year	2024
9	Location	S 34 T 24 N R 17 E	102	Direction of Traffic	ONE LANE BRIDGE FOR 2-WAY
11	Milepoint	62.29 miles	109	AADT Truck Percent	29%
16	Latitude	36 D 41 M 11 S	114	Future AADT	435
17	Longitude	89 D 12 M 37 S	115	Future AADT Year	2044
UNDERRECORD INFORMATION			STRUCTURE GEOMETRIC INFORMATION		
6	Features Intersected	LATERAL DTCH #7	10	Inventory Rte. Vert. Clear	99 Ft. 99 In.
42B	Type of Service Under	WATERWAY	19	By pass Detour Length	19.38 miles
28B	Lanes Under Structure	00	32	Approach Roadway Width	20 Ft. 0 In.
54A	Vert. Clearance Ref.	N/A	34	Skew	25.00 Degrees
54B	Vert. Clearance	0 Ft. 0 In.	35	Struct. Flared	NO
55A	Rt. Lat Clear Ref.	N/A	47	Total Horiz. Clear	20 Ft. 0 In.
55B	Rt. Lat Clearance	0 Ft. 0 In.	48	Maximum Span Length	41 Ft. 0 In.
56	Left Lat Clearance	0 Ft. 0 In.	49	Structure Length	43 Ft. 12 In.
38	Navigation Control	PERMIT NOT REQ	50A	Left Curb/Sidewalk Width	0 Ft. 0 In.
39	Nav Vertical Clear	0 Ft. 0 In.	50B	Right Curb/Sidewalk Width	0 Ft. 0 In.
40	Nav Horizontal Clear	0 Ft. 0 In.	51	Curb to Curb Br. Width	20 Ft. 0 In.
111	Nav. Pier Protection		52	Deck Width (Out-Out)	21 Ft. 4 In.
116	Nav. Cl. Vert. Clear		53	Vert. Clearance Over Deck	99 Ft. 99 In.

Design_No = T0543 and Inventory_Appraisal_Submittal_Year = 2025



Missouri Department of Transportation
Bridge Inventory and Inspection System
Structural Inventory & Appraisal Sheet

March 13, 2025
5:01:28pm

COUNTY : MISSISSIPPI BRIDGE : T0543 1 REVIEW STATUS : CONVERTED NBI STATUS : T
RECORD TYPE : ROUTE CARRIED 'ON' STRUCT RUN DATE : 3/7/2025 SUBMITTAL YEAR : 2025

LOAD RATING AND POSTING INFORMATION			MATERIAL/CONSTRUCTION INFORMATION		
31	Design Load	H 10	43A	Main Struc. Mat type	STEEL
41	Structure Status	POSTED FOR LOAD	43B	Main struc Constr. Type	STRINGER/MULTIBEAM - GRD
63	Oper. Rating Meth.	ALLOWABLE STRESS	45	# of Main Spans	1
64	Operating Rating	20 Tons.	44A	Appr Struc. Mat type	000
65	Inventory Rating Meth	ALLOWABLE STRESS	44B	Appr Struc. Cnstr. type	000
66	Inventory Rating	10 Tons.	46	# of Approach Span	0
70	Bridge Posting Code	30.0-39.9% BELOW	107	Deck Mat/Constr.	1 CONCRETE CIP
PROPOSED IMPROVEMENT INFORMATION			108A	Wear Surf Mat/Constr.	6 BITUMINOUS
Sufficiency Rating 43.9 Percent			108B	Membrane Mat/Constr.	1 BUILT UP
Deficiency Rating STRUCTURAL			108C	Deck Protect Mat/Constr.	0 NONE
Funding Eligibility FULL			CONDITION RATING INFORMATION		
75A	Proposed Work	REPLACEMENT SUBSTND LOAD	58	Deck Cond. Rating	5
75B	Work Done By	Contract	59	Superstructure Cond. Rating	6
76	New Struc Length	65 Ft. 7 In.	60	Substructure Cond. Rating	5
94	Struc Improve Cost	\$ 343,000	61	Channel /Channel Protection Cond. Rating	7
95	Roadway Improve Cost	\$ 34,000	62	Culvert Cond. Rating	N
96	Total Project Cost	\$ 515,000	INSPECTION INFORMATION		
97	Year of Cost Estimates	2025	90	Gen. Insp Date	11 / 24
APPRAISAL RATING INFORMATION			91	Gen. Insp. Frequency	12 Months
36A	Br. Rail App. Rating	DOES NOT MEET ACCEPT STND	92A	Frac. Critical Inspection	N Months
36B	Transition Rail App. Rating	DOES NOT MEET ACCEPT STND	93A	Frac. Critical Insp. Date	
36C	Approach Rail App. Rating	DOES NOT MEET ACCEPT STND	92B	Underwater Inspection	N Months
36D	Rail End Treat. App. Rating	DOES NOT MEET ACCEPT STND	93B	Underwater Insp. Date	
67	Struc Eval App. Rating	2	92C	Special Inspection	N Months
68	Deck Geometry App. Rating	4	93C	Special Inspection Date	
69	Underclearance App. Rating	N	BORDER BRIDGE INFORMATION		
71	Waterway Adeq. App. Rating	5	98	Neighboring State Code	
72	Approach Road App. Rating	8	98B	Neighboring State % Respon	
113	Scour Assess App. Rating	8	99	Neighboring State Struc. No.	
APPROVED POSTING INFORMATION			FIELD POSTING INFORMATION		
Approved Posting Category S-5			Field Posting Category S-5		
Ton1 Ton2 Ton3			Ton1 Ton2 Ton3		
Tonnage Values for Posting Sign 13			Tonnage Values for Posting Sign 13		
General Text for Posting Sign			General Text for Posting Sign		
CENTERLINE OF BRIDGE AND TRUCKS OVER 13 TONS 15 MPH ON BRIDGE.			CENTERLINE OF BRIDGE AND TRUCKS OVER 13 TONS 15 MPH ON BRIDGE.		

Design_No = T0543 and Inventory_Appraisal_Submittal_Year = 2025