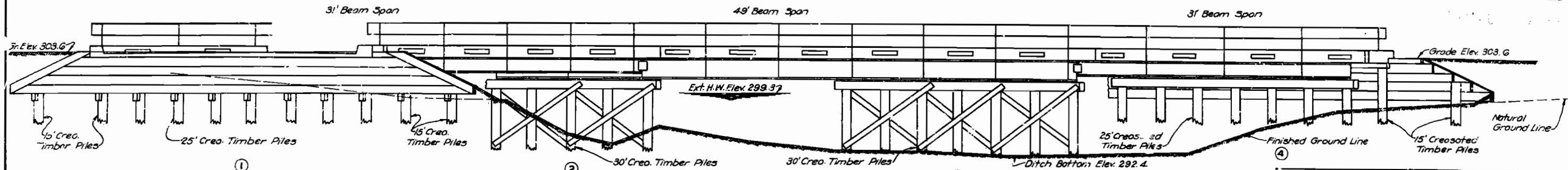


MISSOURI STATE HIGHWAY DEPARTMENT

FED. ROAD DIST. NO.	STATE	FED. AID PROJ. NO.	FISCAL YEAR	SHEET NO.	TOTAL SHEETS
1	MO.	264-42	1935	19	

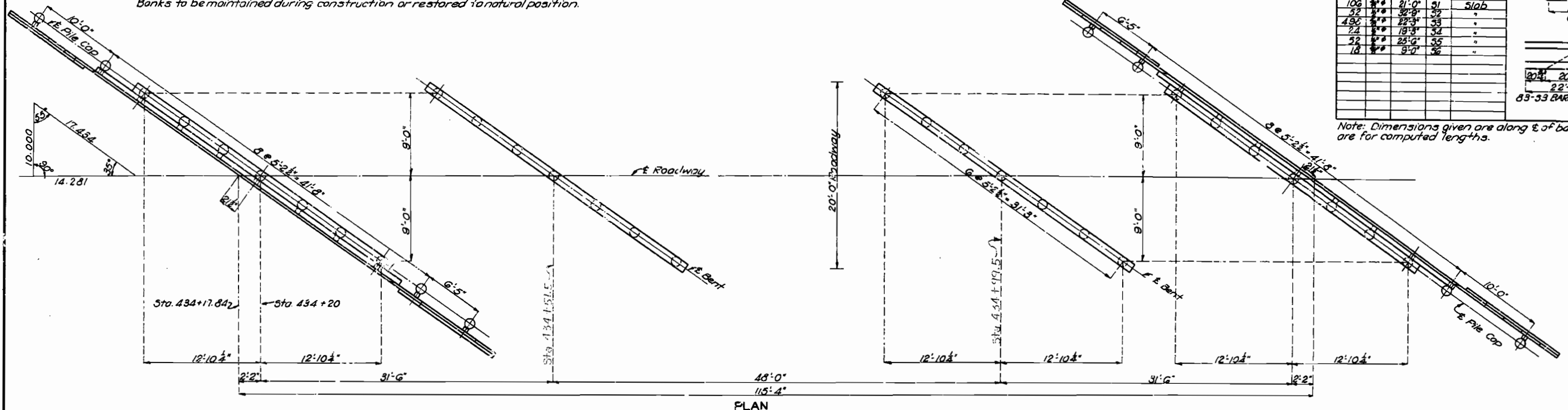


Note: See Special Provisions in regard to ordering piling. All piling to be creosoted timber and ordered in the following lengths: 8 @ 15'-0", 14 @ 25'-0" and 14 @ 30'-0". These lengths include 12" cut-offs. Piles for intermediate bents to be driven to full penetration unless a bearing of 20 tons is obtained at a lesser depth, in which case tips shall be driven to Elev. 277.0. All other piles to be driven to full penetration. Banks to be maintained during construction or restored to natural position.

GENERAL ELEVATION

BILL OF REINFORCING STEEL					
No.	Size	Length	Mark	Location	BENDING SKETCH & CUTTING DIAGRAM
16	3/4"	12'-9"	C1	Curb	
17	3/4"	2'-0"	C2	"	
18	3/4"	25'-9"	C3	"	
106	3/4"	21'-0"	S1	Slab	
52	3/4"	32'-8"	S2	"	
490	3/4"	22'-3"	S3	"	
24	3/4"	18'-3"	S4	"	
52	3/4"	25'-0"	S5	"	
18	3/4"	9'-0"	S6	"	
					63-53 BARS CUT 498

Note: Dimensions given are along E. of bars and are for computed lengths.



PLAN

ESTIMATED QUANTITIES					FINAL
Item	Substr.	Superstr.	Total	Quantities	
Excavation Class I	Cu.Yds.	20		20	37.5
Concrete Class "X"	Cu.Yds.		57.3	57.3	57.3
Reinforcing Steel	Lbs.		52700	52700	52350
Creosoted Timber Piling	Lin. Ft.	854	17730	17730	17730
Creosoted Timber Piling cut-offs	Lin. Ft.	36		36	30
Creosoted Timber	F.B.M.	4010		4010	4010
Improve Old Bridge	Lump Sum				1

Note: All bridge excavation will be paid for as Class I Bridge Excavation.

GENERAL NOTES:

Design Spec. A.A.S.H.O.
Loading H-10 A.A.S.H.O. One Lane.
Structural Steel Stress 16,000 psi
Reinforcing Steel Stress 12,000 psi
Concrete Class "X" 750 psi
Creosoted Timber 1600 psi
Concrete in slabs and curbs to be Class "X".
All concrete shall be proportioned by the weight proportioning method. See Special Provisions.
Exposed edges to be beveled 1/4" where no other bevel is noted.
Where rubber compound is specified on plans for use in partition and expansion joints, the pre-moulded joint shall be securely stitched to one face of concrete with copper wire.
Shop drawings for all structural steel shall be submitted to the Missouri State Highway Department in duplicate and shall be approved before steel is fabricated.
Rivets 3/4", holes 15/16", except in handrail where rivets shall be 3/8" holes 1/2". Field connections for handrail channels shall be 3/4" button head bolts and for connection of rail to railposts shall be 3/4" bolts, holes 15/16". All other field connections riveted except as noted.
Bridge excavation will be allowed for all bents within horizontal limits shown and noted on these design plans, Sheet No. 3. This excavation will be computed from existing ground line to bottom end of 6" x 6" backing supports for end bents and to bottom of sway bracing for interior bents.
Paint Shop, none; Field, contact surfaces of bolted field connections one coat of red lead and surfaces inaccessible after erection three coats of red lead. No other paint to be applied by the contractor. Red lead required shall be furnished by the contractor.

GENERAL NOTES (CONT'D.)

All timber shall be creosoted and shall be either Dense Longleaf or Shortleaf Structural, Square Edge and Sound Southern Yellow Pine or "Close-grained Select Structural Douglas Fir of the West Coast Region". All timber shall be rough full-sawn except as noted in timber bill for pile caps. Slight variations in sawing shall be in accordance with grading rules. All timber shall be cut to billed lengths and shapes and shall be bored as shown before treating.
All backing planks are billed 6" long and are to be re-cut and fitted in the field. Percent will be based on quantities of material in finished structure. Field holes for drift pins shall be field bored 3/4" unless otherwise noted all other field holes in timber shall be field bored 1/2". When bolts with countersunk heads are indicated on plans cut washers shall be used under heads. O.G. washers shall be used under heads of all other bolts and under nuts of all bolts. Cost of substructure hardware to be included in price bid for timber in place.
I-beams with fastenings, spacers, handrail, and handrail posts with fastenings, and cap plate on end bents with fastenings, will be paid for as structural steel.
Cost of metallic edge moulding will be included in unit bid price for concrete.
Bar supports and spacers will be required for reinforcing steel in superstructure. See Standard C-110R and Special Provisions.
Protection caps to be placed on heads of all piles of pile bents in accordance with Section 23-G of Standard Specifications issued April 1, 1930.

S.M. #264-42, Elev. 299.34, N.I.R. 15" Leaning Tree CC'ed at Sta. 433+5
B.M. Elev. 300.42, Top of Tree CC'ed at Sta. 433+5
Sta. 434+17.84

BRIDGE OVER MAIN DITCH DIST. NO. 29

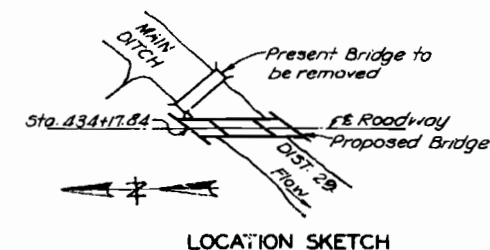
STATE ROAD FROM WYATT TO ROUTE 55
ABOUT 1.5 MILES SOUTH OF DEVENTER
PROJECT NO. WPSS580.1 (SE) STA. 434+17.84

MISSISSIPPI COUNTY

SUBMITTED BY: N.R. Lock DATE: 10/18/35
APPROVED BY: J.H. Cutler DATE: 10/18/35
BRIDGE ENGINEER
CHIEF DESIGNER

STD. C-110R

T-419



LOCATION SKETCH

Drawn Dec. 1934 by H.C.M.
Traced Dec. 1934 by G.W.
Checked Dec. 1934 by H.D.

Note: This drawing is not to scale. Follow dimensions.

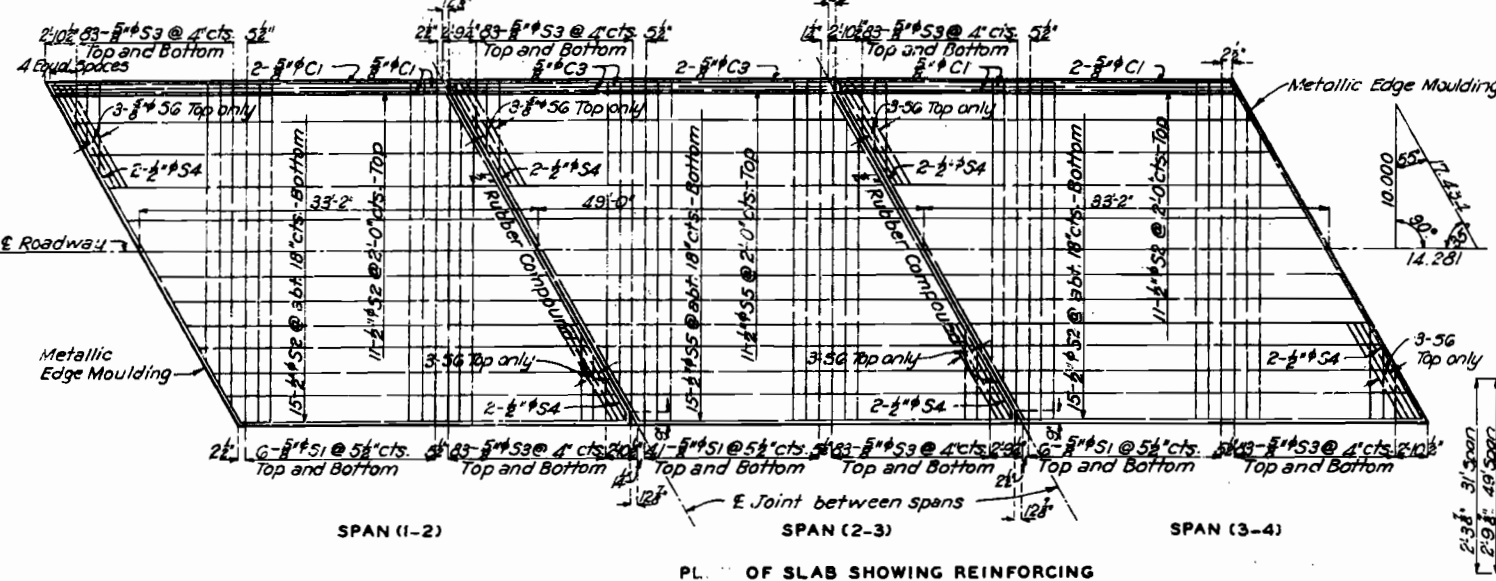
Sheet No. 1 of 3.

F.A.

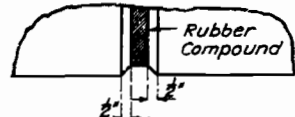
MISSOURI STATE HIGHWAY DEPARTMENT

ED. ROAD DIST. NO.	STATE	FED. AID PROJ. NO.	FISCAL YEAR	SHEET NO.	TOTAL SHEETS
1	MO.	W-56	1934	19	

Note: Space dowel bars "C2" at approximately 12" cts. in curbs between outlets and at ends.

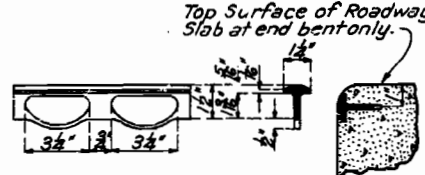


PLAN OF SLAB SHOWING REINFORCING



Note: Use bevel as shown for exposed faces of all joints consisting of rubber compound except at top surface of roadway slab. Use edging tool with 1/2" radius at top surface of roadway slab each side of rubber compound joint.

DETAIL OF BEVEL FOR RUBBER COMPOUND JOINTS



METALLIC EDGE Moulding

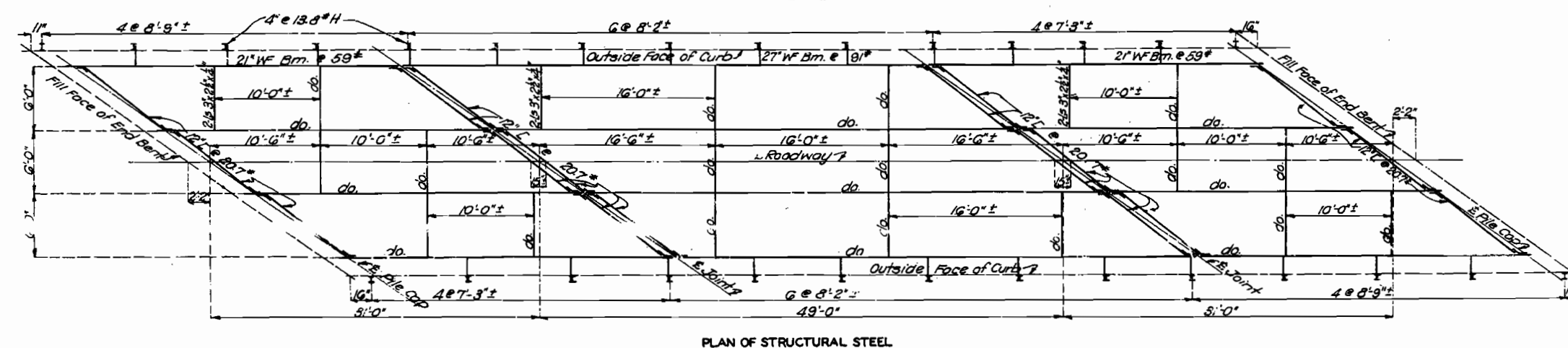
Note: An approved equivalent may be substituted for edge moulding shown above.

Note: Top of curbs under end posts shall be finished to a smooth surface parallel to grade. Not less than one nor more than four soft lead plates of 1/8" thickness shall be used under angles of each end rail post for aligning rail to correct elevation. Plates shall be 8 1/2" x 6" and shall be punched 3/8" on same gauge as the angles. No grouting permitted. Cost of lead plates to be included in price bid for other items.



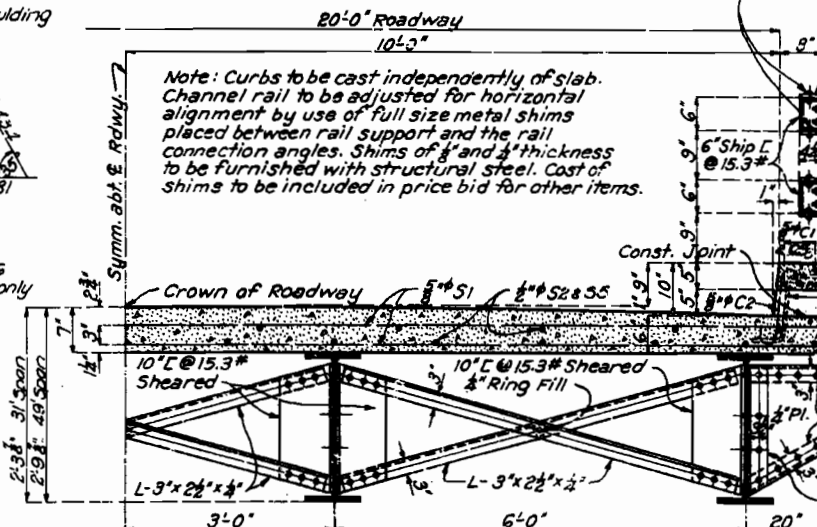
Note: Floor slab to be brought to grade and dead load deflection taken care of by increasing slab thickness. Depth of slab at outside face of curb to be kept uniform and bottom surface of slab warped between curb and outside beam to obtain required thickness at beam. Payment will be allowed for additional concrete required for thickening slab. This additional concrete is included in "Estimated Quantities".

DEFLECTION DIAGRAM

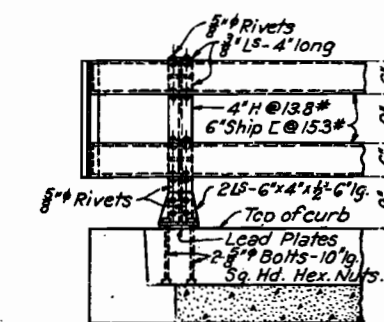


PLAN OF STRUCTURAL STEEL

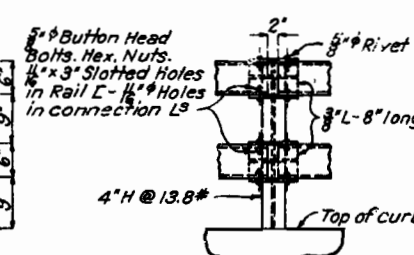
Note: Curbs to be cast independently of slab. Channel rail to be adjusted for horizontal alignment by use of full size metal shims placed between rail support and the rail connection angles. Shims of 1/4" and 1/2" thickness to be furnished with structural steel. Cost of shims to be included in price bid for other items.



HALF SECTION THRU SPAN



SECTION A-A

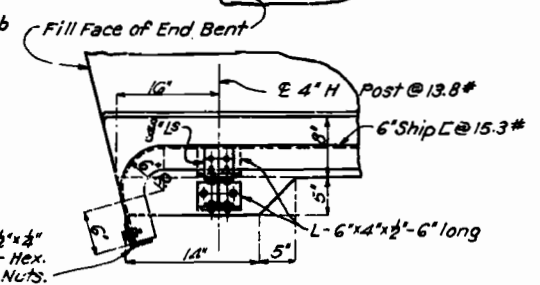
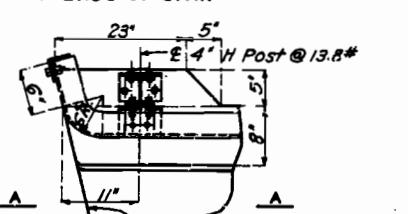


RAIL EXPANSION JOINT

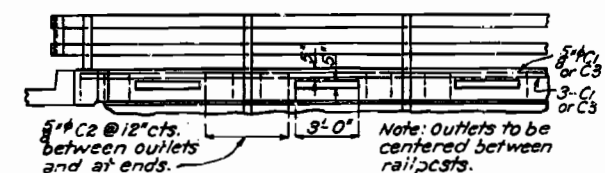
Note: Use similar detail at rail splices except omit slotted holes and 2" expansion gap.

Note: Top of channel separators at ends of each I-Beam span to be flush with bottom of floor slab.

DETAIL OF RAIL BRACKETS AT ENDS OF SPAN



LOCATION OF POSTS AT END BENTS



BRIDGE OVER MAIN DITCH DIST. NO. 29
STATE ROAD FROM WYATT TO ROUTE 55
ABOUT 1.5 MILES SOUTH OF DEVENTER
PROJECT NO. WPS5 560A (S1) STA. 434+17.84
MISSISSIPPI COUNTY

NO CONSTRUCTION CHANGES T-419

FINAL PLANS

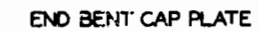
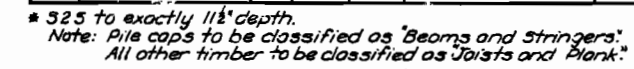
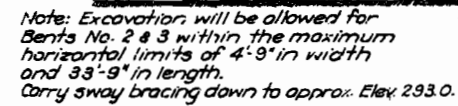
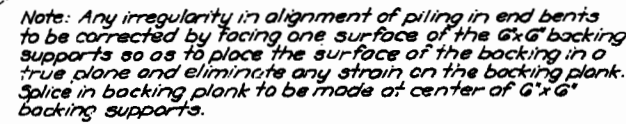
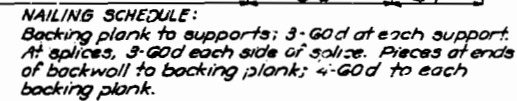
Drawn Aug. 1933 By R.J.G.
Traced Aug. 1933 By R.J.G. Assembled Dec. 1934 By H.C.M.-G.W.
Checked Aug. 1933 By N.M.R. Checked Dec. 1934 By H.D.

Note: This drawing is not to scale. Follow dimensions.

Sheet No. 2 of 3.


FA.

FED. ROAD DIST. NO.	STATE	FED. AID PROJ. NO.	FISCAL YEAR	SHEET NO.	TOTAL SHEETS
5	MO	WP33 SGOA (SE)	19		



T-419


MISSISSIPPI COUNTY


		<div>Missouri Department of Transportation</div> <div>State Bridge Inspection Report</div>				<div>March 13, 2025</div> <div>4:35:44PM</div>			
COUNTY: MISSISSIPPI		DISTRICT: SE		CLASS: STATBR		FED-ID: 9132		BRIDGE: T0419	
GENERAL STRUCTURE INFORMATION							***BRIDGE INSPECTION INFORMATION***		
<div>ROUTE: MO77S</div> <div>FEATURE: MAIN DTCH</div> <div>STATUS: P-POSTLOAD</div> <div>LOG MILE: 54.198</div> <div>DETOUR: 20.00 MILES</div> <div>NHS: NO</div> <div>BUILT: 1935</div> <div>REHAB:</div> <div>LOCATION: S 21 T 25 R 17 E</div> <div>LATITUDE: 36 47 53.68 (DMS)</div> <div>LONGITUDE: 89 12 40.91 (DMS)</div>		<div># SPANS: 3</div> <div>LANES ON: 1</div> <div>LANES UNDER: 0</div> <div>COMPASS DIRECTION: NORTH to SOUTH</div> <div>DIRECTION OF TRAFFIC: 1-LN/2-WAY</div> <div>FUNCTIONAL CLASS: RL-MAJOR COLLECTOR</div> <div>NBI OWNER: MODOT</div> <div>NBI MAINTAINED: MODOT</div> <div>MAINTENANCE DISTRICT: SE</div> <div>MAINTENANCE COUNTY: MISSISSIPPI</div> <div>SUB AREA: 7H09</div>		<div>PLACE CODE: 48926 MISSISSIPPI</div> <div>LENGTH: 115 FT 0 IN</div> <div>MAXIMUM SPAN: 48 FT 0 IN</div> <div>APPROACH ROADWAY: 20 FT 0 IN</div> <div>CURB TO CURB: 20 FT 0 IN</div> <div>OUT TO OUT: 21 FT 4 IN</div> <div>AADT: 297</div> <div>AADT YEAR: 2024</div> <div>AADT TRUCK: 27.7%</div> <div>FUTURE AADT: 416</div> <div>FUTURE AADT YEAR: 2044</div>		<div>DATE: 11/04/2024</div> <div>RESPONSIBILITY: DISTRICT</div> <div>FREQUENCY: 12</div> <div>CALCULATED INTERVAL**: 12</div> <div>TEAM LEADER: STEVE RIGHTNOWAR</div> <div>ELEMENT: NO</div> <div>INSPECTOR 2:</div> <div>INSPECTOR 4:</div> <div>INSPECTOR 3:</div> <div>** When calculated interval exceeds the frequency, a justification comment per BIRM is required.</div>			
						<div>GENERAL INSPECTION COMMENTS</div>			
						<div>(MUSSED, 10/22/2012)--DELETED HANGER PLATE INSPECTION FROM THE SPECIAL INSPECTION LIST (10/22/12). DBE SHOULD INSPECT HANGER PLATES AS PART OF ROUTINE INSPECTION.</div>			
FRACTURE CRITICAL INSPECTION INFORMATION					***INDEPTH INSPECTION INFORMATION***				
<div>DATE:</div> <div>FREQUENCY:</div> <div>TEAM LEADER:</div> <div>INSPECTOR 2:</div> <div>** When calculated interval exceeds the frequency, a justification comment per BIRM is required.</div>					<div>RESPONSIBILITY:</div> <div>CALCULATED INTERVAL**:</div> <div>INSPECTOR 3:</div> <div>INSPECTOR 4:</div> <div>CATEGORY:</div> <div>NBI:</div> <div>METHOD:</div> <div>** When calculated interval exceeds the frequency, a justification comment per BIRM is required.</div>				
FRACTURE CRITICAL INSPECTION COMMENTS					INDEPTH INSPECTION COMMENTS				
SPECIAL INSPECTION INFORMATION					***UNDERWATER INSPECTION INFORMATION***				
<div>DATE: 07/22/2019</div> <div>FREQUENCY: 72</div> <div>TEAM LEADER: ED HESS</div> <div>INSPECTOR 2:</div> <div>** When calculated interval exceeds the frequency, a justification comment per BIRM is required.</div>					<div>RESPONSIBILITY: DISTRICT</div> <div>CALCULATED INTERVAL**: 69</div> <div>INSPECTOR 3:</div> <div>INSPECTOR 4:</div> <div>CATEGORY: CHANNEL CROSS SEC</div> <div>NBI: NO</div> <div>METHOD: WT TAPE</div> <div>** When calculated interval exceeds the frequency, a justification comment per BIRM is required.</div>				
SPECIAL INSPECTION COMMENTS					UNDERWATER INSPECTION COMMENTS				
OTHER SPECIAL INSPECTIONS					OTHER UNDERWATER INSPECTIONS				
<div>DATE</div> <div>FREQUENCY</div> <div>CATEGORY</div> <div>NBI</div> <div>CALCULATED INTERVAL</div> <div>RESPONSIBILITY</div> <div>METHOD</div>					<div>DATE</div> <div>FREQUENCY</div> <div>CATEGORY</div> <div>NBI</div> <div>CALCULATED INTERVAL</div> <div>RESPONSIBILITY</div> <div>METHOD</div>				

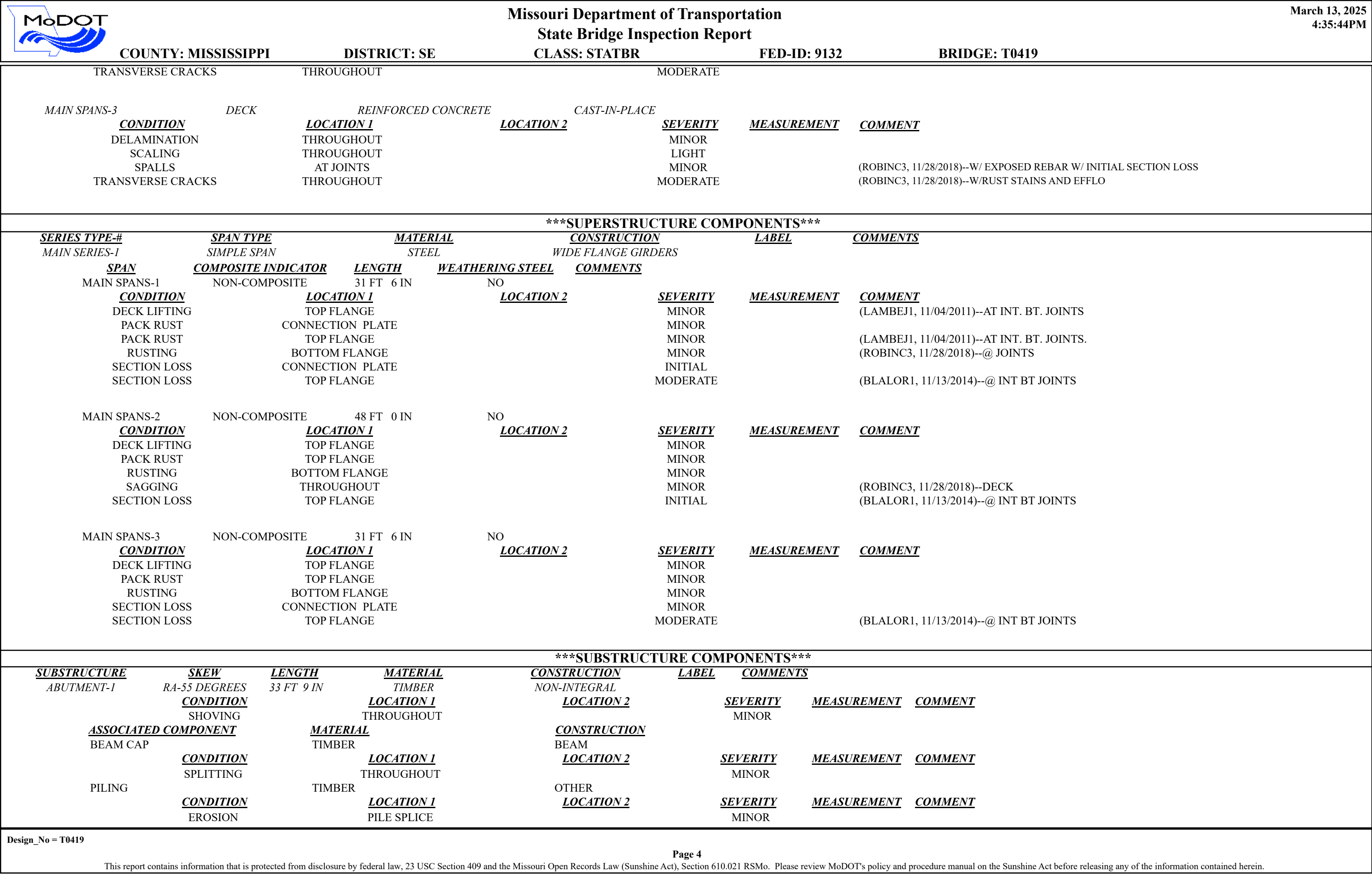
Design_No = T0419

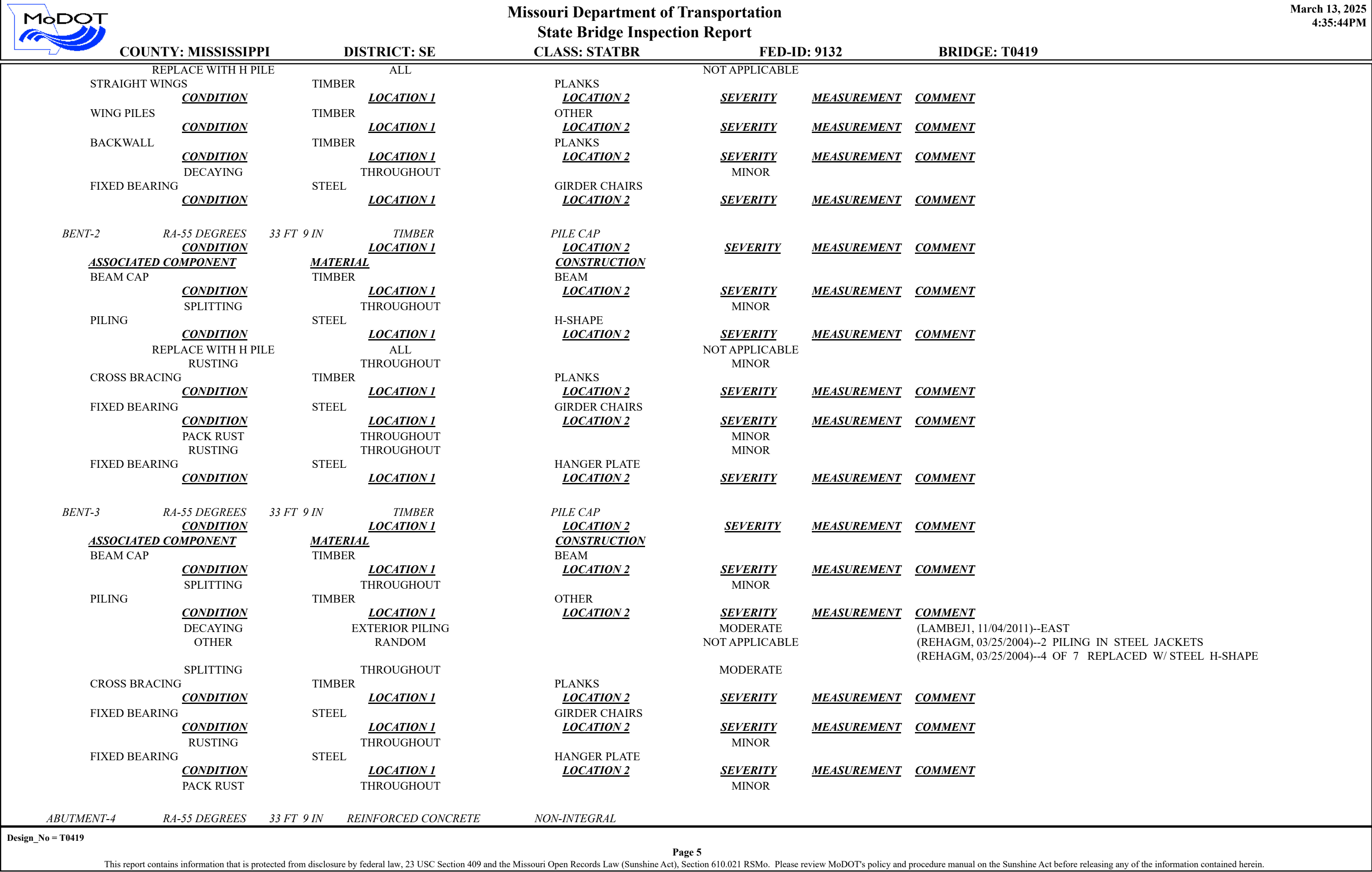
Page 1

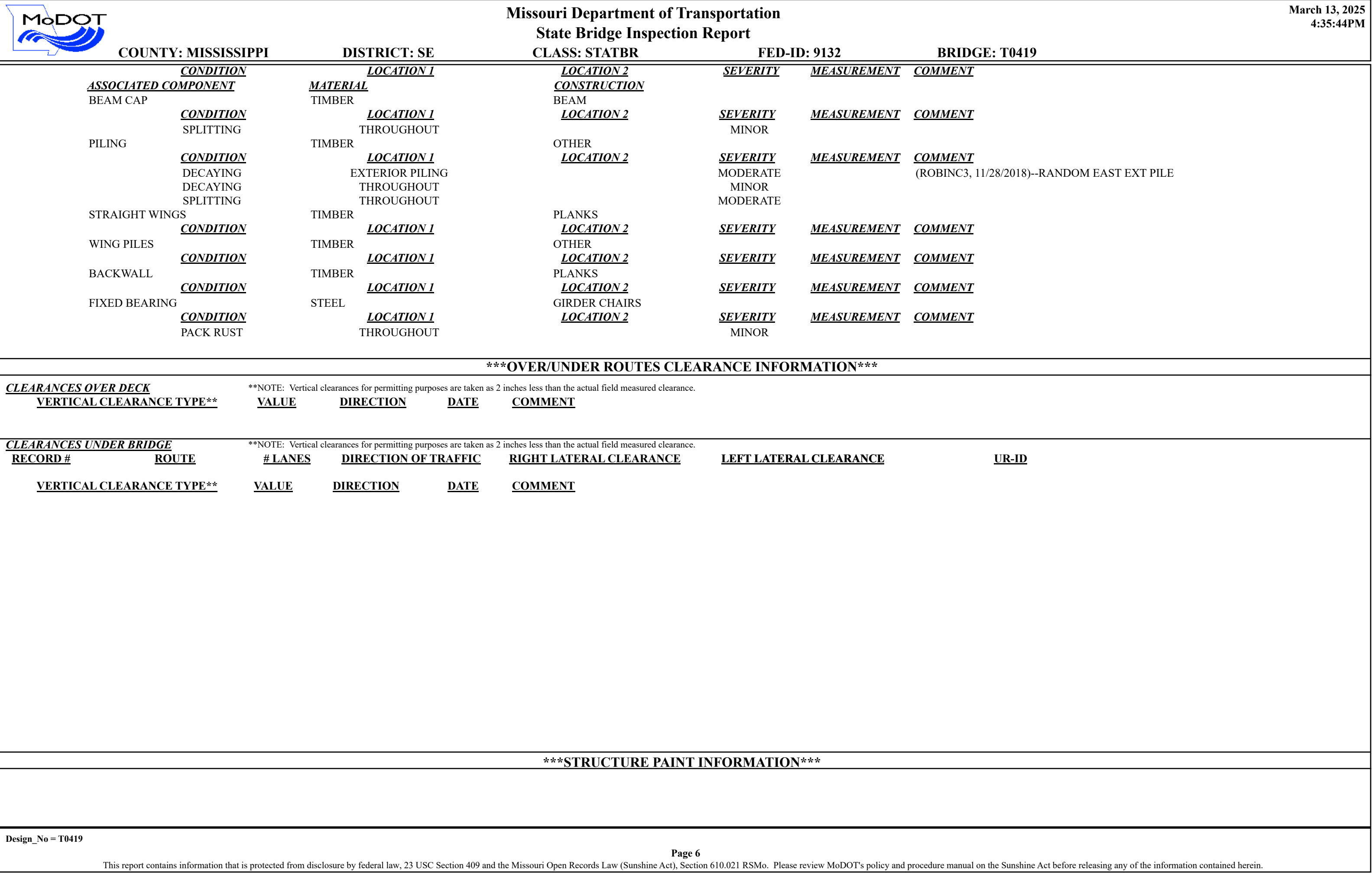
This report contains information that is protected from disclosure by federal law, 23 USC Section 409 and the Missouri Open Records Law (Sunshine Act), Section 610.021 RSMo. Please review MoDOT's policy and procedure manual on the Sunshine Act before releasing any of the information contained herein.


		Missouri Department of Transportation			March 13, 2025	
		State Bridge Inspection Report			4:35:44PM	
COUNTY: MISSISSIPPI		DISTRICT: SE	CLASS: STATBR	FED-ID: 9132	BRIDGE: T0419	
STRUCTURE POSTING						
APPROVED CATEGORY: S-17		CL OF BR AND TRK OVR 14 T 15MPH ON BR EXCPT SNGL E UNT TRKS WT LMT 20 T OTHR TRKS WT LMT 36 T.				
Ton 1: 14		Ton 2: 20		Ton 3: 36		
COMMENTS:						
FIELD CATEGORY: S-17		CL OF BR AND TRK OVR 14 T 15MPH ON BR EXCPT SNGL E UNT TRKS WT LMT 20 T OTHR TRKS				
Ton 1: 14		Ton 2: 20		Ton 3: 36		PROBLEM:
COMMENTS:		PROBLEM DIRECTION:				
GENERAL COMMENTS/MAJOR RATED ITEMS						
GENERAL COMMENTS: (BOWDEJ1, 09/05/2008)--(31'-48'-31') SMP WF GDR SPANS						
[ITEM 58] DECK: 6-SATISFACTORY CONDITION			COMMENTS: (WIESEJ1, 08/08/2011)--T CRKS, DELAM, SPALL			
RATING : 05/18/2001						
[ITEM 59] SUPER: 5-FAIR CONDITION			COMMENTS: (DENNIB1, 11/03/2016)--INITIAL SECTION LOSS @ CONNECTION PLATE			
RATING : 11/03/2016			(ROBINC3, 11/28/2018)--MODERATE SECTION LOSS TOP FLANGE			
[ITEM 60] SUB: 5-FAIR CONDITION			COMMENTS: (LAMBEJ1, 11/04/2011)--MULTIPLE BENTS W/TIMBER PILE SPLICES			
RATING : 12/22/2005						
[ITEM 61] BANK/CHANNEL: 5-MAJOR DAMAGE			COMMENTS: (DENNIB1, 11/13/2017)--EROSION OF SLOPES @ PILING BENTS			
RATING : 11/13/2017						
[ITEM 113] SCOUR: 8-STABLE FOR CALCULATED			COMMENTS:			
RATING : 05/18/2001						
EVALUATION TYPE :						
[ITEM 71] WATERWAY ADEQUACY: DECK ABOVE FLOOD ELEV			COMMENTS:			
RATING : 05/18/2001						
[ITEM 72] APPRRDWY ALIGNMENT: 6-SATISFACTORY			COMMENTS:			
RATING : 05/18/2001						
RAILING AND APPROACH PAVEMENT COMPONENTS AND RATINGS						
[ITEM 36A] BRIDGE RAILING RATING: DOESNT MEET CURRNT STND-0			RATING : 02/24/2004		COMMENTS:	
<u>MATERIAL</u>		<u>CONSTRUCTION</u>	<u>DIRECTION</u>	<u>COMMENTS</u>		
REINFORCED CONCRETE		CURB	BOTH			
<u>CONDITION</u>		<u>LOCATION 1</u>	<u>LOCATION 2</u>		<u>SEVERITY</u>	<u>COMMENT</u>
SPALLS		RANDOM			MINOR	(BLALOR1, 11/13/2014)--W/ EXPOSED REBAR
STEEL		CHANNEL-DOUBLE	BOTH			
[ITEM 36B] TRANSITION RAILING RATING: NOT PROVIDED-0			RATING : 05/18/2001		COMMENTS:	
[ITEM 36C] APPROACH RAILING RATING: NOT PROVIDED-0			RATING : 05/18/2001		COMMENTS:	
[ITEM 36D] RAIL END TREATMENT RATING: NOT PROVIDED-0			RATING : 05/18/2001		COMMENTS:	
Design_No = T0419						
Page 2						
This report contains information that is protected from disclosure by federal law, 23 USC Section 409 and the Missouri Open Records Law (Sunshine Act), Section 610.021 RSMo. Please review MoDOT's policy and procedure manual on the Sunshine Act before releasing any of the information contained herein.						

		Missouri Department of Transportation				March 13, 2025	
		State Bridge Inspection Report				4:35:44PM	
COUNTY: MISSISSIPPI		DISTRICT: SE		CLASS: STATBR		FED-ID: 9132	
				BRIDGE: T0419			
APPROACH PAVEMENT: *Overall condition assigned for each approach pavemenet component is shown below.							
<u>MATERIAL</u>		<u>CONSTRUCTION</u>		<u>DIRECTION</u>		<u>CONDITION*</u>	
ASPHALT		BITUMINOUS MAT		BOTH		FAIR	
DRAINAGE, EXPANSION DEVICES, BANK/SLOPE, AND DECK PROTECTIVE COMPONENTS							
<u>DECK PROTECTIVE COMPONENTS:</u>							
<u>SERIES TYPE-#</u>		<u>COMPONENT</u>		<u>MATERIAL</u>		<u>CONSTRUCTION</u>	
MAIN SERIES-1		WEARING SURFACE		ASPHALT		BITUMINOUS SEAL COAT	
				<u>THICKNESS</u>		<u>YEAR APPLIED</u>	
				.4 IN		2013	
<u>COMMENT:</u>							
		DECK PROTECTION		LIQUID SEALANT		INTERNALLY SEALED	
<u>COMMENT:</u>						2011	
						PAVON INDECK	
		MEMBRANE		NOTAPPLICABLE		NONE	
<u>COMMENT:</u>							
<u>DRAINAGE COMPONENTS:</u>							
		<u>COMPONENT</u>		<u>MATERIAL</u>		<u>CONSTRUCTION</u>	
		DRAINAGE		REINFORCED CONCRETE		CURB OUTLET	
				<u>DIRECTION</u>		<u>COMMENTS</u>	
<u>EXPANSION DEVICE COMPONENTS:</u>							
<u>SUB UNIT-#</u>		<u>SUB LABEL</u>		<u>COMPONENT</u>		<u>MATERIAL</u>	
						<u>CONSTRUCTION</u>	
						<u>GAP</u>	
						<u>YEAR APPLIED</u>	
						<u>MANUFACTURE</u>	
						<u>OVERALL CONDITION</u>	
<u>COMMENT:</u>							
<u>BANK/SLOPE PROTECTION COMPONENTS:</u>							
		<u>COMPONENT</u>		<u>MATERIAL</u>		<u>CONSTRUCTION</u>	
						<u>DIRECTION</u>	
						<u>COMMENTS</u>	
DECK COMPONENTS							
<u>SPAN TYPE-#</u>		<u>COMPONENT</u>		<u>MATERIAL</u>		<u>CONSTRUCTION</u>	
MAIN SPANS-1		DECK		REINFORCED CONCRETE		CAST-IN-PLACE	
						<u>COMMENTS</u>	
<u>CONDITION</u>		<u>LOCATION 1</u>		<u>LOCATION 2</u>		<u>SEVERITY</u>	
DELAMINATION		THROUGHOUT				MINOR	
DETERIORATION		AT JOINTS				MINOR	
DETERIORATION		EDGE				MINOR	
LONGITUDINAL CRACKS		RANDOM				MINOR	
SCALING		THROUGHOUT				LIGHT	
SPALLS		RANDOM				MINOR	
TRANSVERSE CRACKS		THROUGHOUT				MODERATE	
						(ROBINC3, 11/28/2018)--W/EXPOSED REBAR	
						(ROBINC3, 11/28/2018)--W/ EXPOSED REBAR AND MODERATE SECTION LOSS ON REBAR	
						(ROBINC3, 11/28/2018)--W/EFFLO AND RUST STAINS	
MAIN SPANS-2		DECK		REINFORCED CONCRETE		CAST-IN-PLACE	
						<u>COMMENTS</u>	
<u>CONDITION</u>		<u>LOCATION 1</u>		<u>LOCATION 2</u>		<u>SEVERITY</u>	
DELAMINATION		THROUGHOUT				MINOR	
SCALING		THROUGHOUT				LIGHT	
SPALLS		THROUGHOUT				MINOR	
						(ROBINC3, 11/28/2018)--W/ EXPOSED REBAR	
Design_No = T0419							
Page 3							
This report contains information that is protected from disclosure by federal law, 23 USC Section 409 and the Missouri Open Records Law (Sunshine Act), Section 610.021 RSMo. Please review MoDOT's policy and procedure manual on the Sunshine Act before releasing any of the information contained herein.							







		Missouri Department of Transportation				March 13, 2025																																					
		State Bridge Inspection Report				4:35:44PM																																					
COUNTY: MISSISSIPPI		DISTRICT: SE		CLASS: STATBR		FED-ID: 9132																																					
						BRIDGE: T0419																																					
CONDITION: FAIR		RUST AMOUNT : 7 = .2% OF SURFACE RUSTED		STEEL TONS : 26																																							
<u>ORIGINAL PAINT</u>		<u>CONTRACT REPAINT</u>		<u>DEPARTMENT REPAINT</u>																																							
PAINT TYPE :		PAINT TYPE :		PAINT TYPE : S SYSTEM		MANUFACTURE :																																					
NAME :		NAME :		NAME : CAL SULPH/LEAD PAINT		SURFACE PREP :																																					
PAINT COLOR :		PAINT COLOR :		PAINT COLOR : GRAY																																							
PAINT YEAR : 1974		PAINT YEAR :		PAINT YEAR : 2000																																							
MILS :		MILS :		MILS : 9																																							
REQUESTED WORK ITEMS																																											
GENERAL WORK COMMENTS:																																											
RESPONSIBILITY		LOCATION		ITEM		CATEGORY																																					
REGIONAL		EAST		REPLACE TIMBER PILE		SUBSTRUCTURE																																					
						PRIORITY																																					
						3																																					
						DATE																																					
						11/26/2018																																					
						WORK ITEM COMMENT																																					
						(DENNIB1, 11/20/2019)--REPLACE BENT 3 EXTERIOR PILE, ABUT #4 EXT. PILE																																					
UTILITY ATTACHMENTS																																											
UTILITY		OWNER		METHOD		MEASUREMENT TYPE																																					
						VALUE																																					
						NUMBER																																					
						UTILITY ATTACHMENT COMMENT																																					
PROGRAM NOTES INFORMATION																																											
YEAR		PROJECT #		MONTH LET		YEAR LET																																					
2027		SE0062		1		2027																																					
				ITEMS		COMMENT																																					
				REPLACE BRIDGE																																							
COMPUTER GENERATED RATINGS AND DEFICIENCY ITEMS						***ADVANCED SIGN INFORMATION***																																					
NOTE: The items listed in this section are updated whenever computer edits are ran on a structure after the inspection updates have been entered in to TMS. <table><tr><td><u>Rated Item</u></td><td><u>Rating</u></td><td><u>Rating Date</u></td></tr><tr><td>[Item 67] Structure Evaluation Rating:</td><td>2-BASICALLY INTOLRBLE REQ</td><td>1/3/2024</td></tr><tr><td>[Item 68] Deck Geometry Rating:</td><td>4-MEETS MINIMUM TOLERABLE</td><td>2/8/2017</td></tr><tr><td>[Item 69] Underclearance:</td><td>N-NOT APPLICABLE</td><td>5/18/2001</td></tr><tr><td>Sufficiency Rating:</td><td>48.2%</td><td>3/6/2024</td></tr><tr><td>Deficiency:</td><td>STRUCTURAL</td><td>1/3/2024</td></tr><tr><td>Funding Eligibility:</td><td>FULL</td><td>----</td></tr><tr><td>Estimated New Structure Length:</td><td>115 FT.</td><td>----</td></tr><tr><td>Estimated Structure Cost:</td><td>\$748,656</td><td>----</td></tr><tr><td>Estimated Total Project Cost:</td><td>\$1,122,984</td><td>----</td></tr><tr><td>Year of Cost Estimate:</td><td>2025</td><td>----</td></tr></table> NOTE: The above structure length and cost estimates are computer generated using algorithms in the TMS system. These algorithms are generalized to use NBI items to come up with a new structure length and width to calculate a new area which is taken times a representative cost per square foot. The actual structure size and cost may vary significantly from these numbers once site specific engineering is done.						<u>Rated Item</u>	<u>Rating</u>	<u>Rating Date</u>	[Item 67] Structure Evaluation Rating:	2-BASICALLY INTOLRBLE REQ	1/3/2024	[Item 68] Deck Geometry Rating:	4-MEETS MINIMUM TOLERABLE	2/8/2017	[Item 69] Underclearance:	N-NOT APPLICABLE	5/18/2001	Sufficiency Rating:	48.2%	3/6/2024	Deficiency:	STRUCTURAL	1/3/2024	Funding Eligibility:	FULL	----	Estimated New Structure Length:	115 FT.	----	Estimated Structure Cost:	\$748,656	----	Estimated Total Project Cost:	\$1,122,984	----	Year of Cost Estimate:	2025	----	SIGN #		SIGN TYPE	PROBLEM	PROBLEM DIRECTION
						<u>Rated Item</u>	<u>Rating</u>	<u>Rating Date</u>																																			
						[Item 67] Structure Evaluation Rating:	2-BASICALLY INTOLRBLE REQ	1/3/2024																																			
						[Item 68] Deck Geometry Rating:	4-MEETS MINIMUM TOLERABLE	2/8/2017																																			
						[Item 69] Underclearance:	N-NOT APPLICABLE	5/18/2001																																			
Sufficiency Rating:	48.2%	3/6/2024																																									
Deficiency:	STRUCTURAL	1/3/2024																																									
Funding Eligibility:	FULL	----																																									
Estimated New Structure Length:	115 FT.	----																																									
Estimated Structure Cost:	\$748,656	----																																									
Estimated Total Project Cost:	\$1,122,984	----																																									
Year of Cost Estimate:	2025	----																																									
1		YIELD TO ONCOMING TRAFFIC																																									
2		B - ONE LANE BRIDGE																																									
OUTFALL INSPECTION INFORMATION																																											
# OUTFALLS:		INSPECTOR:																																									
STATUS:		DATE:																																									
NOTES:																																											



Missouri Department of Transportation
Bridge Inventory and Inspection System
Structural Inventory & Appraisal Sheet

March 13, 2025
4:59:23pm

COUNTY : MISSISSIPPI BRIDGE : T0419 REVIEW STATUS : CONVERTED NBI STATUS : T
RECORD TYPE : ROUTE CARRIED 'ON' STRUCT RUN DATE : 3/7/2025 SUBMITTAL YEAR : 2025

GENERAL STRUCTURE INFORMATION			ROUTE DESIGNATION INFORMATION		
1	State	MISSOURI	5A	Record Type	ROUTE CARRIED 'ON' STRUCT
2	District	SE	5B	Route Signing Prefix	MO
3	County	MISSISSIPPI	5C	Designated Level of Service	MAINLINE
8	Federal ID No.	9132	5D	Route Number	00077
27	Year Built	1935	5E	Directional Suffix	NOT APPLICABLE
106	Year Reconstructed	0	7	Facility Carried	MO 77 S
42A	Type of Service On	HIGHWAY	12	Base Hwy. Network	NO
21	Structure Maintenance	STATE HIGHWAY AGENCY	13A	LRS Inventory Route No.	
22	Structure Owner	STATE HIGHWAY AGENCY	13B	Subroute No.	
33	Br. Median Code	NO MEDIAN	20	Toll Status	ON FREE ROAD
37	Historical Significance	NOT ELIGIBLE FOR NR OF HP	26	Functional Classification	07-RURAL MAJOR COLLECTOR
101	Parallel Struc Desg	NONE EXISTS	28A	Lanes on Structure	01
103	Temporary Structure	NOT TEMPORARY	100	STRAHNET Designation	RTE NOT A DEFENSE HWY
112	NBIS Bridge Length	YES	104	National Highway System	NOT ON NHS
			105	Federal Lands Highway	NOT APPLICABLE
			110	Designated Nat. Network	NO
STRUCTURE LOCATION INFORMATION			STRUCTURE TRAFFIC INFORMATION		
4	Place	MISSISSIPPI	29	AADT	297
	Code	48926	30	AADT Year	2024
9	Location	S 21 T 25 N R 17 E	102	Direction of Traffic	ONE LANE BRIDGE FOR 2-WAY
11	Milepoint	54.51 miles	109	AADT Truck Percent	28%
16	Latitude	36 D 47 M 54 S	114	Future AADT	416
17	Longitude	89 D 12 M 41 S	115	Future AADT Year	2044
UNDERRECORD INFORMATION			STRUCTURE GEOMETRIC INFORMATION		
6	Features Intersected	MAIN DTCH	10	Inventory Rte. Vert. Clear	99 Ft. 99 In.
42B	Type of Service Under	WATERWAY	19	By pass Detour Length	20.00 miles
28B	Lanes Under Structure	00	32	Approach Roadway Width	20 Ft. 0 In.
54A	Vert. Clearance Ref.	N/A	34	Skew	55.00 Degrees
54B	Vert. Clearance	0 Ft. 0 In.	35	Struct. Flared	NO
55A	Rt. Lat Clear Ref.	N/A	47	Total Horiz. Clear	20 Ft. 0 In.
55B	Rt. Lat Clearance	0 Ft. 0 In.	48	Maximum Span Length	47 Ft. 11 In.
56	Left Lat Clearance	0 Ft. 0 In.	49	Structure Length	115 Ft. 2 In.
38	Navigation Control	PERMIT NOT REQ	50A	Left Curb/Sidewalk Width	0 Ft. 0 In.
39	Nav Vertical Clear	0 Ft. 0 In.	50B	Right Curb/Sidewalk Width	0 Ft. 0 In.
40	Nav Horizontal Clear	0 Ft. 0 In.	51	Curb to Curb Br. Width	20 Ft. 0 In.
111	Nav. Pier Protection		52	Deck Width (Out-Out)	21 Ft. 4 In.
116	Nav. Cl. Vert. Clear		53	Vert. Clearance Over Deck	99 Ft. 99 In.

Design_No = T0419 and Inventory_Appraisal_Submittal_Year = 2025



Missouri Department of Transportation
Bridge Inventory and Inspection System
Structural Inventory & Appraisal Sheet

March 13, 2025
4:59:23pm

COUNTY : MISSISSIPPI BRIDGE : T0419 REVIEW STATUS : CONVERTED NBI STATUS : T
RECORD TYPE : ROUTE CARRIED 'ON' STRUCT RUN DATE : 3/7/2025 SUBMITTAL YEAR : 2025

LOAD RATING AND POSTING INFORMATION			MATERIAL/CONSTRUCTION INFORMATION		
31	Design Load	H 10	43A	Main Struc. Mat type	STEEL
41	Structure Status	POSTED FOR LOAD	43B	Main struc Constr. Type	STRINGER/MULTIBEAM - GRD
63	Oper. Rating Meth.	LOAD FACTOR	45	# of Main Spans	3
64	Operating Rating	18 Tons.	44A	Appr Struc. Mat type	000
65	Inventory Rating Meth	LOAD FACTOR	44B	Appr Struc. Cnstr. type	000
66	Inventory Rating	11 Tons.	46	# of Approach Span	0
70	Bridge Posting Code	30.0-39.9% BELOW	107	Deck Mat/Constr.	1 CONCRETE CIP
PROPOSED IMPROVEMENT INFORMATION			108A	Wear Surf Mat/Constr.	6 BITUMINOUS
Sufficiency Rating 48.2 Percent			108B	Membrane Mat/Constr.	0 NONE
Deficiency Rating STRUCTURAL			108C	Deck Protect Mat/Constr.	7 INTERNALLY SEALED
Funding Eligibility FULL			CONDITION RATING INFORMATION		
75A	Proposed Work	REPLACEMENT SUBSTND LOAD	58	Deck Cond. Rating	6
75B	Work Done By	Contract	59	Superstructure Cond. Rating	5
76	New Struc Length	144 Ft. 4 In.	60	Substructure Cond. Rating	5
94	Struc Improve Cost	\$ 749,000	61	Channel /Channel Protection Cond. Rating	5
95	Roadway Improve Cost	\$ 75,000	62	Culvert Cond. Rating	N
96	Total Project Cost	\$ 1,123,000	INSPECTION INFORMATION		
97	Year of Cost Estimates	2025	90	Gen. Insp Date	11 / 24
APPRAISAL RATING INFORMATION			91	Gen. Insp. Frequency	12 Months
36A	Br. Rail App. Rating	DOES NOT MEET ACCEPT STND	92A	Frac. Critical Inspection	N Months
36B	Transition Rail App. Rating	DOES NOT MEET ACCEPT STND	93A	Frac. Critical Insp. Date	
36C	Approach Rail App. Rating	DOES NOT MEET ACCEPT STND	92B	Underwater Inspection	N Months
36D	Rail End Treat. App. Rating	DOES NOT MEET ACCEPT STND	93B	Underwater Insp. Date	
67	Struc Eval App. Rating	2	92C	Special Inspection	N Months
68	Deck Geometry App. Rating	4	93C	Special Inspection Date	
69	Underclearance App. Rating	N	BORDER BRIDGE INFORMATION		
71	Waterway Adeq. App. Rating	8	98	Neighboring State Code	
72	Approach Road App. Rating	6	98B	Neighboring State % Respon	
113	Scour Assess App. Rating	8	99	Neighboring State Struc. No.	
APPROVED POSTING INFORMATION			FIELD POSTING INFORMATION		
Approved Posting Category S-17			Field Posting Category S-17		
Ton1 Ton2 Ton3			Ton1 Ton2 Ton3		
Tonnage Values for Posting Sign 14 20 36			Tonnage Values for Posting Sign 14 20 36		
General Text for Posting Sign			General Text for Posting Sign		
CL OF BR AND TRK OVR 14 T 15MPH ON BR EXCPT SNGL E UNT TRKS WT LMT 20 T OTHR TRKS WT LMT 36 T.			CL OF BR AND TRK OVR 14 T 15MPH ON BR EXCPT SNGL E UNT TRKS WT LMT 20 T OTHR TRKS WT LMT 36 T.		

Design_No = T0419 and Inventory_Appraisal_Submittal_Year = 2025